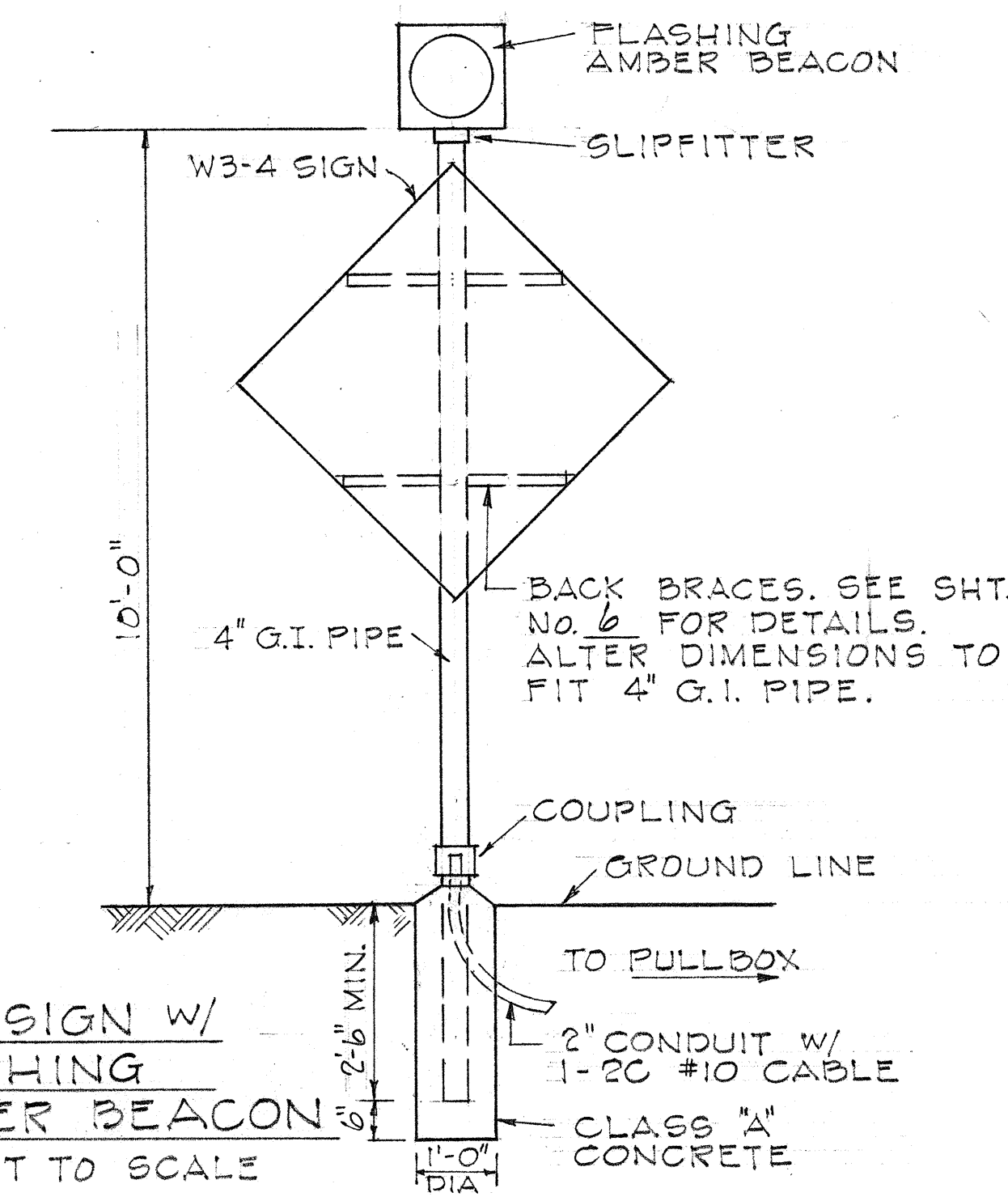


FED. ROAD DIST. NO.	STATE	FED. AID PROJ. NO.	FISCAL YEAR	SHEET NO.	TOTAL SHEETS
HAWAII	HAW.	740A-02-70	1970	3	7

GENERAL NOTES

1. THE FLASHING AMBER BEACON INSTALLATION AS SHOWN HEREIN, LESS THE W3-4 SIGN, SHALL BE MADE A PART OF CONTRACT ITEM NO. 623.01 "TRAFFIC SIGNAL SYSTEM" AND NO ADDITIONAL COMPENSATION WILL BE MADE.
2. LOCATION OF EXISTING UNDERGROUND STRUCTURES SUCH AS CULVERTS, PIPELINES, CONDUITS, CABLES, ETC., AS SHOWN ON THE PLANS ARE APPROXIMATE ONLY. OTHER EXISTING UTILITIES MAY NOT BE SHOWN. THE CONTRACTOR SHALL CHECK AND VERIFY THE LOCATION OF SAME.
3. THE EXACT LOCATION OF TRAFFIC SIGNAL STANDARDS, MAST ARMS, CONTROLLER BASE, PULLBOXES AND CONDUITS SHALL BE DETERMINED IN THE FIELD BY THE ENGINEER.
4. EXISTING SIGNS NOT INCORPORATED IN THE COMPLETED SYSTEM SHALL BE REMOVED AND STOCKPILED AS DIRECTED BY THE ENGINEER.
5. PAVEMENT MARKINGS BY OTHERS
6. THE EXACT LOCATION OF PROJECT INFORMATIONAL SIGNS SHALL BE DETERMINED IN THE FIELD BY THE ENGINEER.

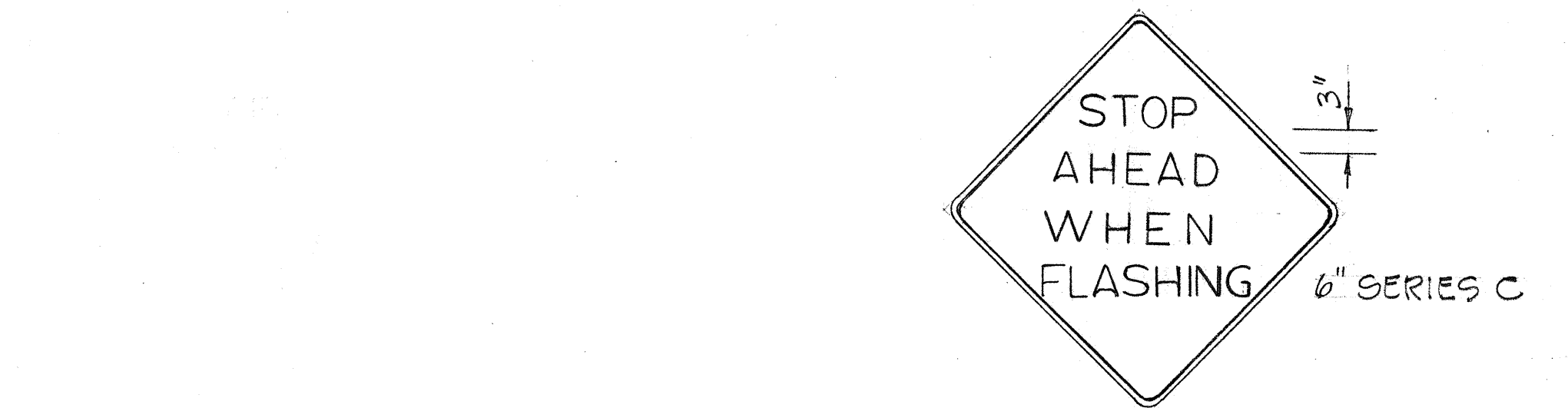
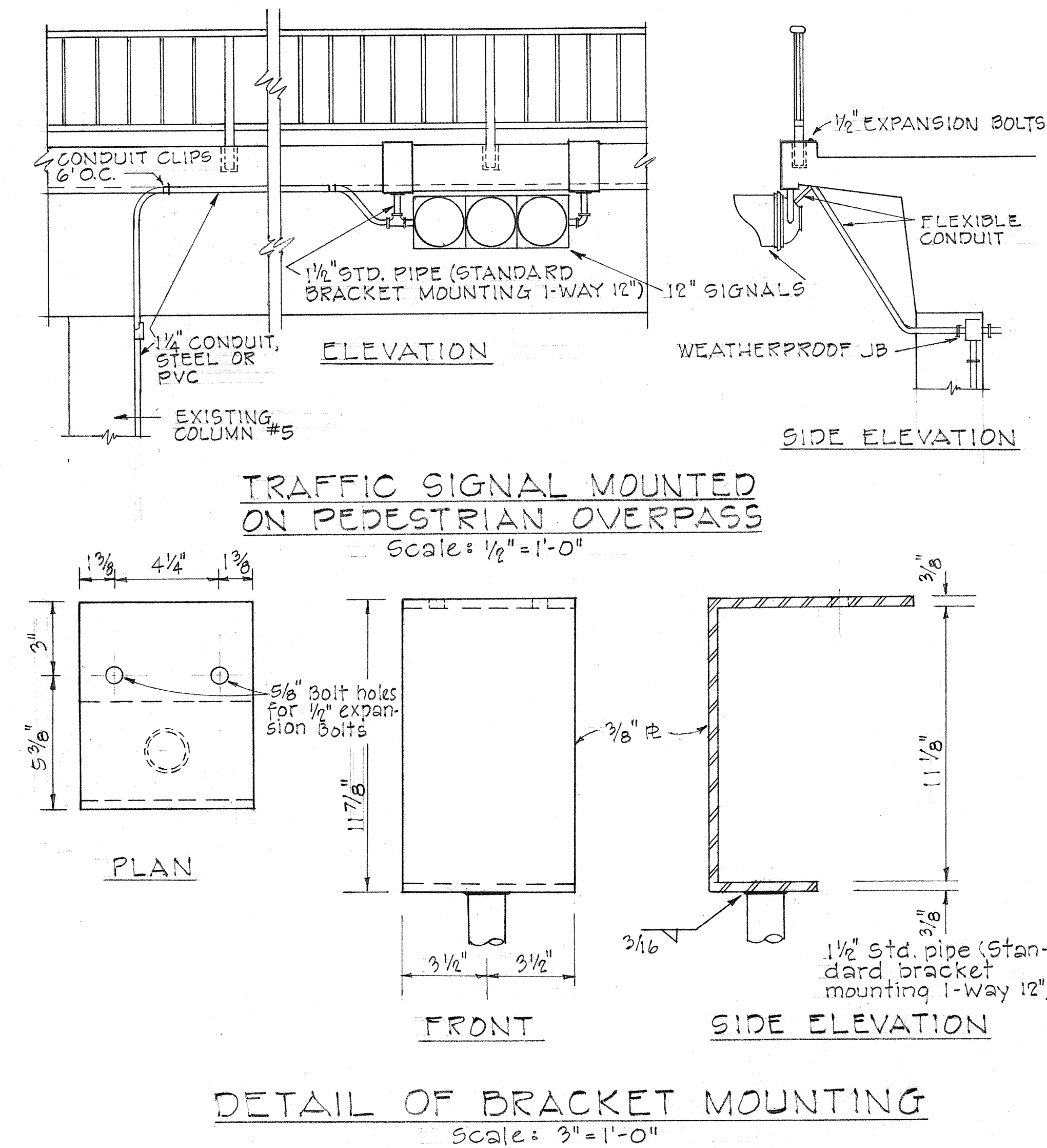


W3-4 SIGN W/ FLASHING AMBER BEACON
NOT TO SCALE

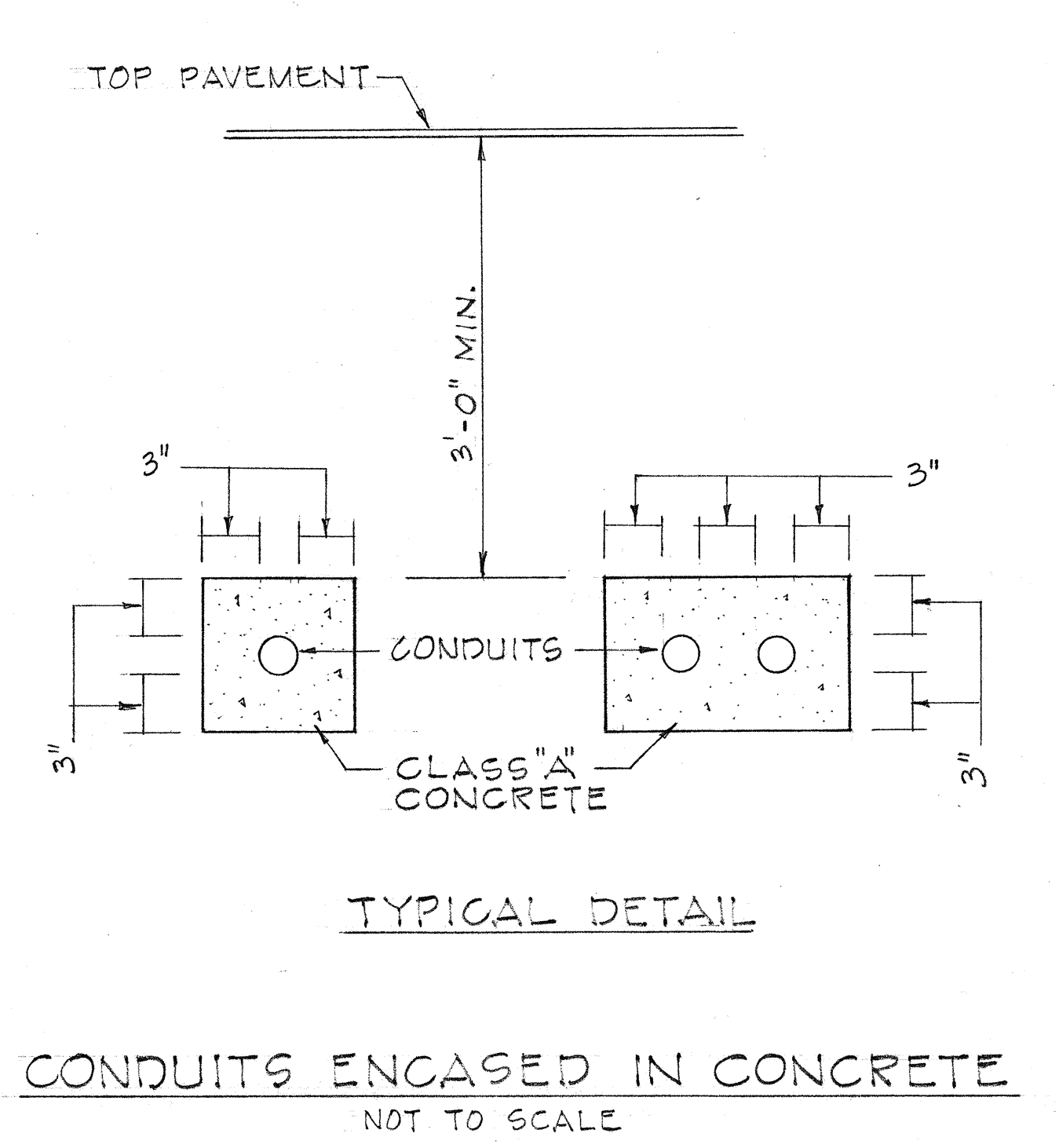
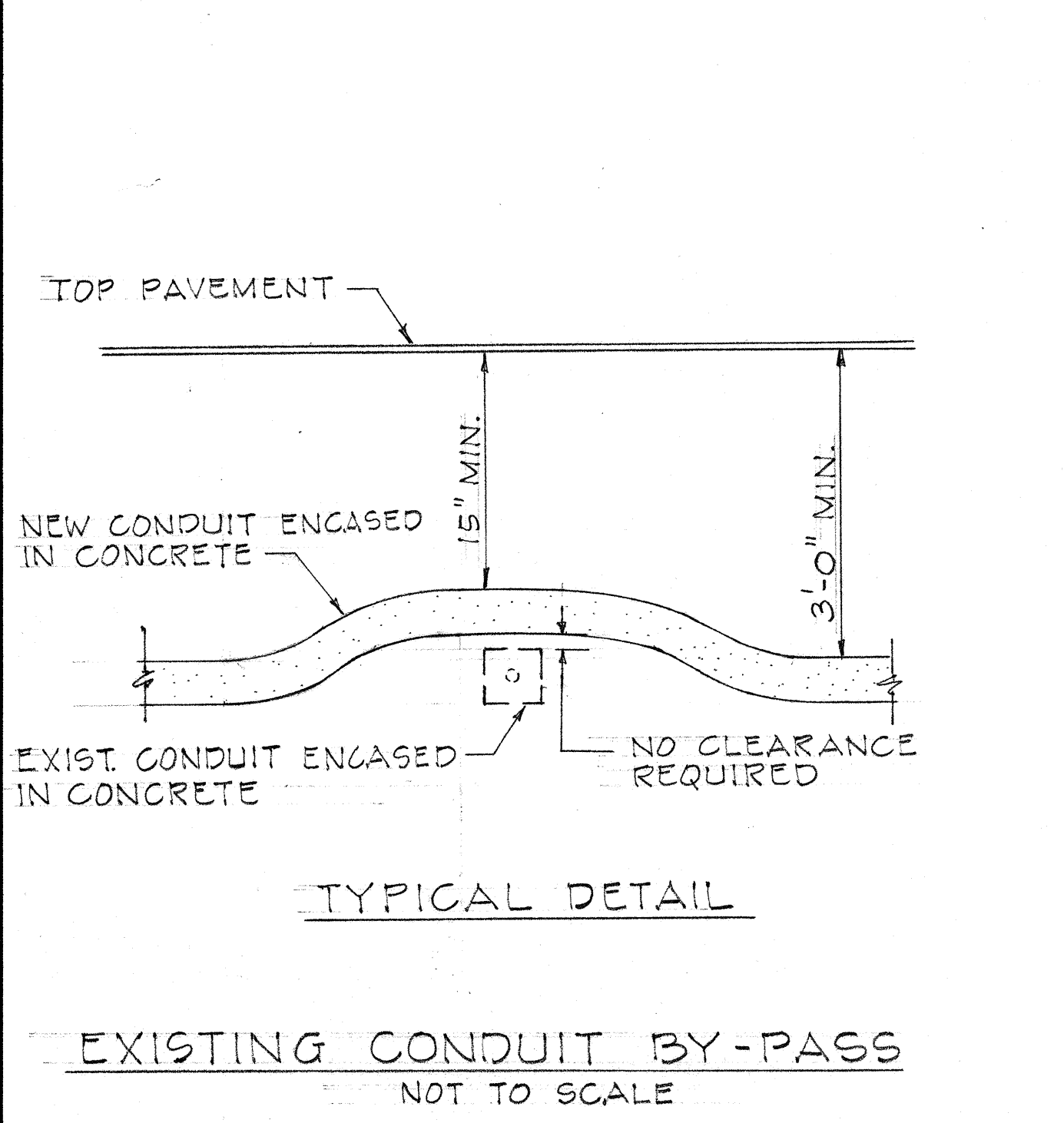
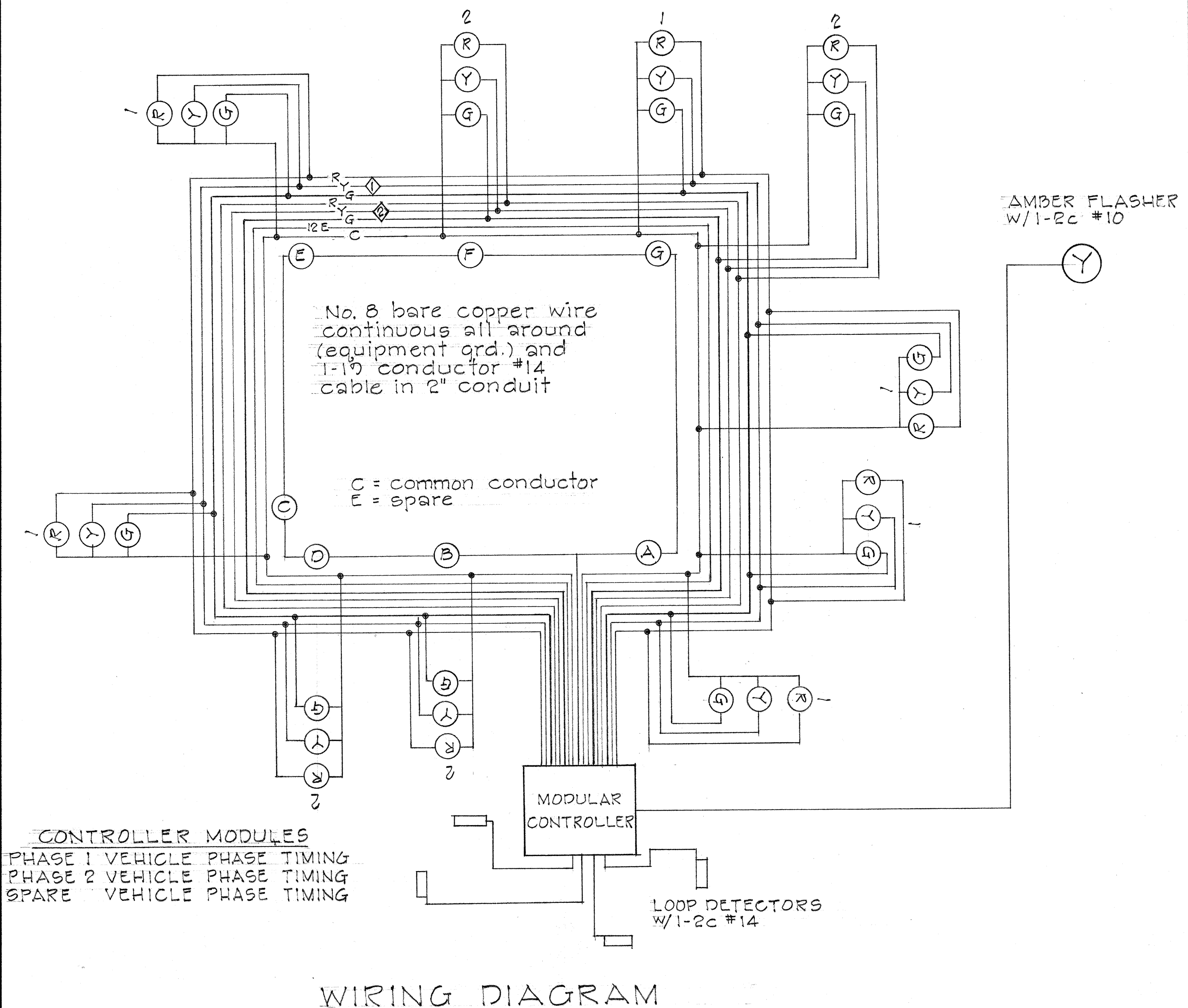
STATE OF HAWAII
DEPARTMENT OF TRANSPORTATION
HIGHWAYS DIVISION

TRAFFIC SIGNAL SYSTEM
MISCELLANEOUS DETAILS

KALANIANA'OLE HIGHWAY
at LUNALILO HOME ROAD
PROJ. NO. 740A-02-70

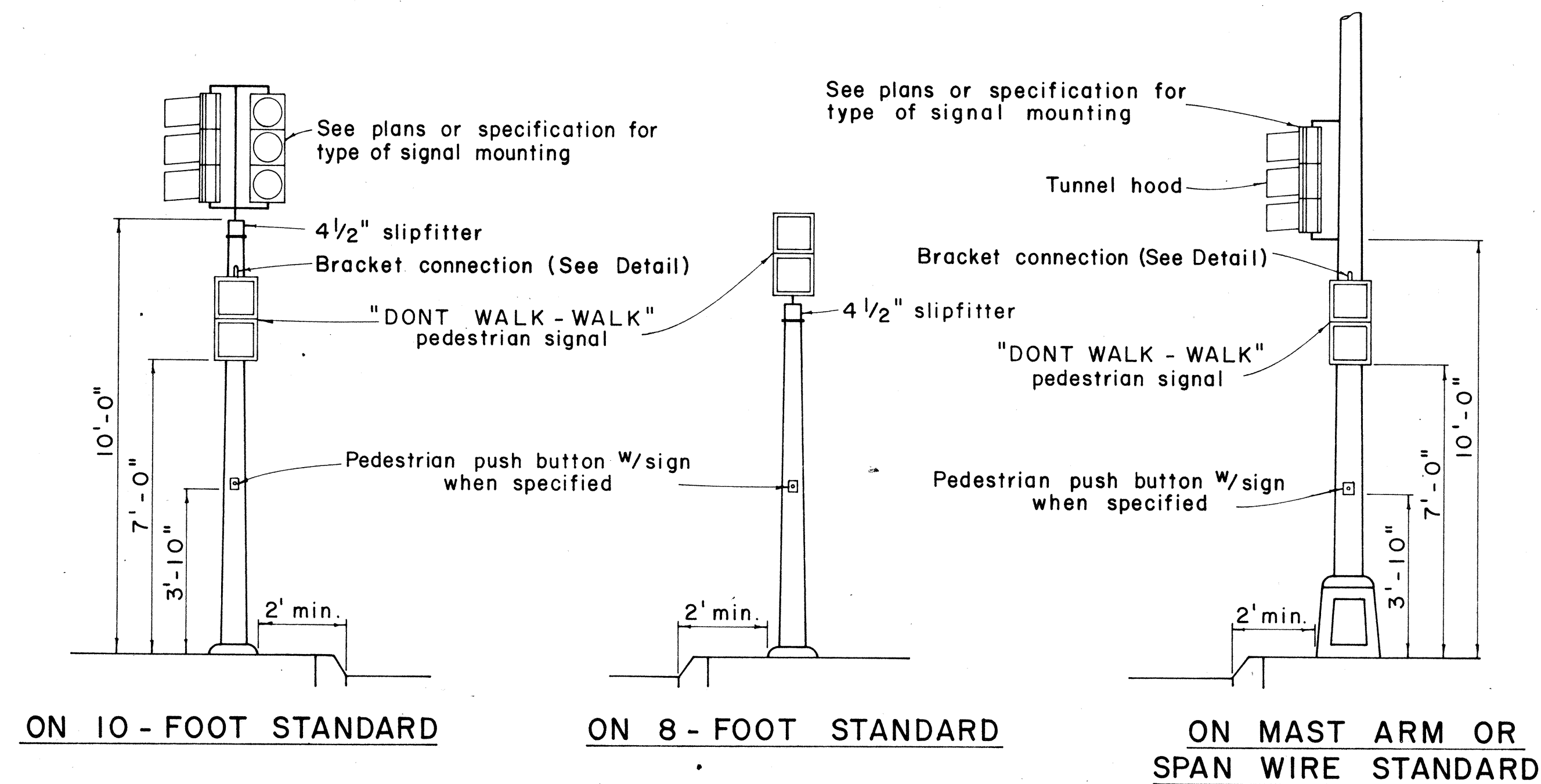


- NOTES - TRAFFIC SIGNS
1. THE SHAPE, COLOR, PLATE DETAILS, LETTERING AND REFLECTORIZATION OF REGULATORY SIGNS (PREFIX R) AND WARNING SIGNS (PREFIX W) SHALL BE IN ACCORDANCE WITH THE MANUAL ON UNIFORM TRAFFIC CONTROL DEVICES FOR STREETS AND HIGHWAYS, DATED JUNE 1961, AND THE B.P.R. MANUAL "STANDARD HIGHWAY SIGNS", DATED SEPT. 1961, UNLESS OTHERWISE SPECIFIED.
 2. ALL REGULATORY AND WARNING SIGNS SHALL BE REFLECTORIZED UNLESS OTHERWISE SPECIFIED.
 3. ALL REGULATORY AND WARNING SIGNS SHALL HAVE 3/8" BOLT HOLES DRILLED AT APPROPRIATE LOCATIONS UNLESS OTHERWISE SPECIFIED

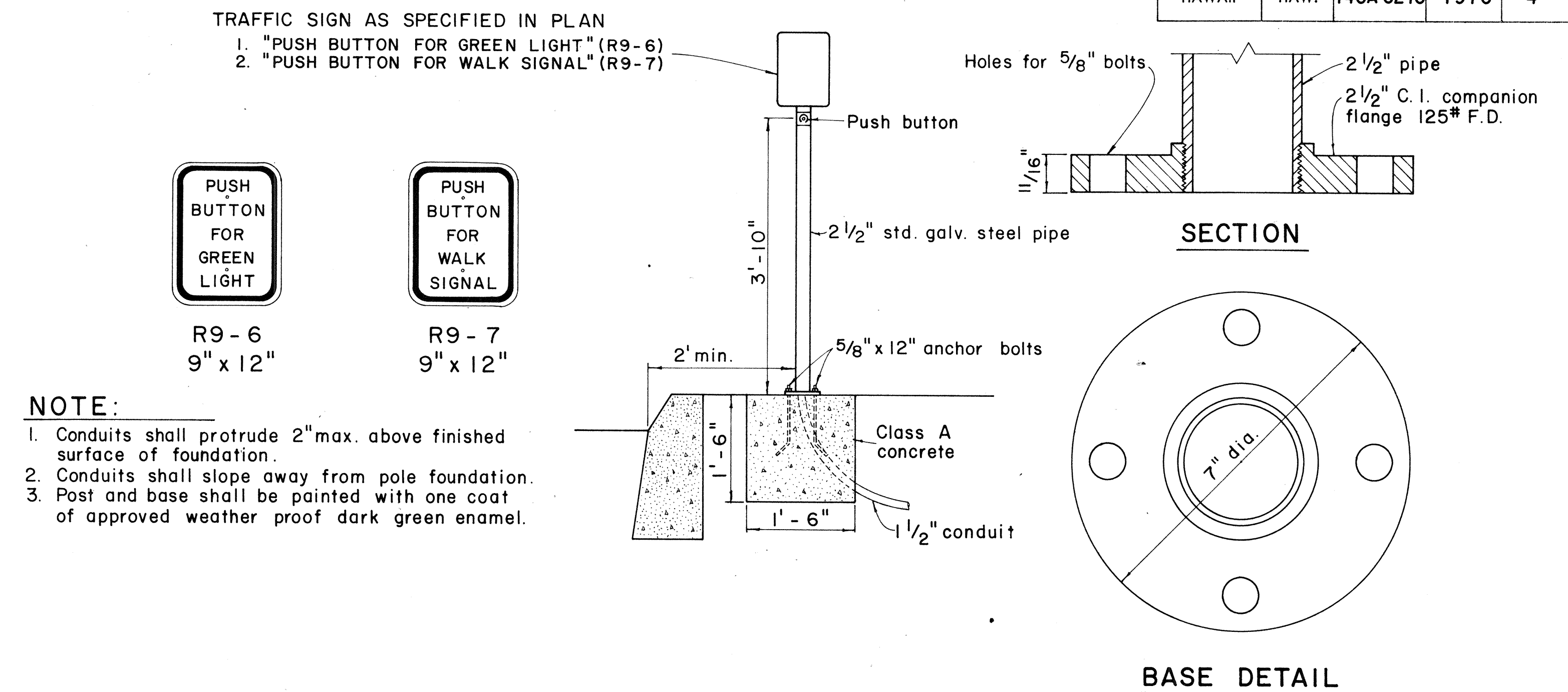


DATE
SURVEY PLOTTED BY
DRAWN BY
TRACED BY
NOTED BY
CHECKED BY
ORIGINAL PLAN
NO.

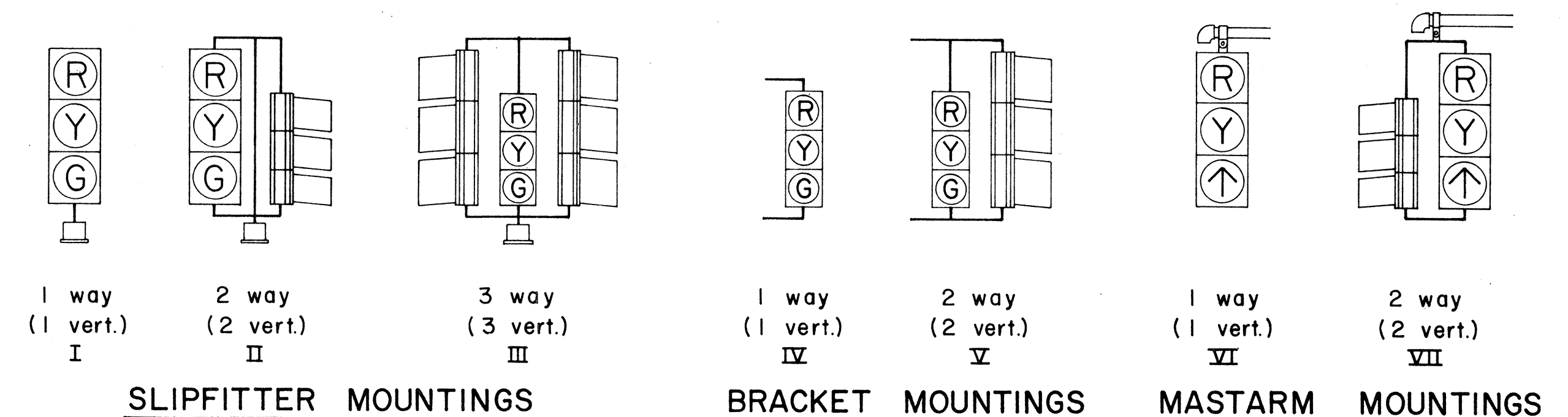
FED. ROAD DIST. NO.	STATE	FED. AID PROJ. NO.	FISCAL YEAR	SHEET NO.	TOTAL SHEETS
HAWAII	HAW.	740A-02-70	1970	4	7



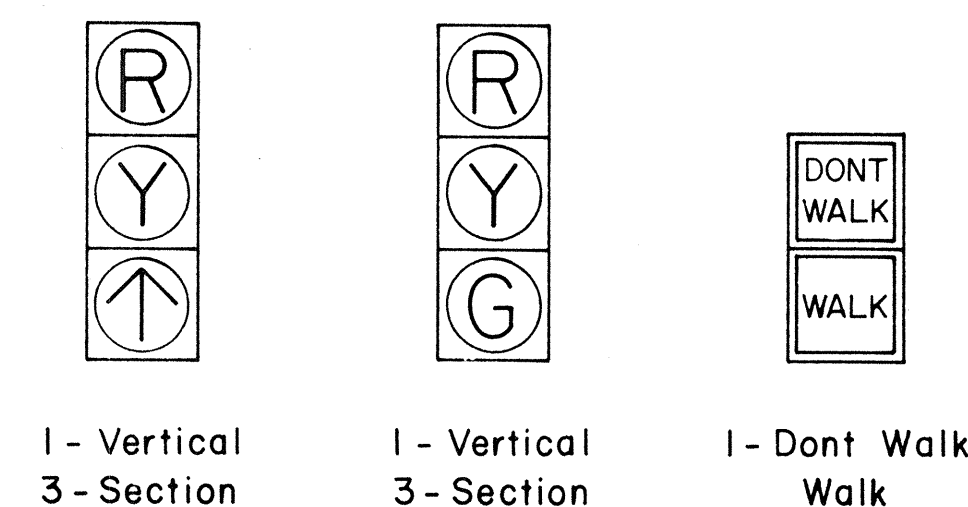
TYPICAL EQUIPMENT MOUNTINGS



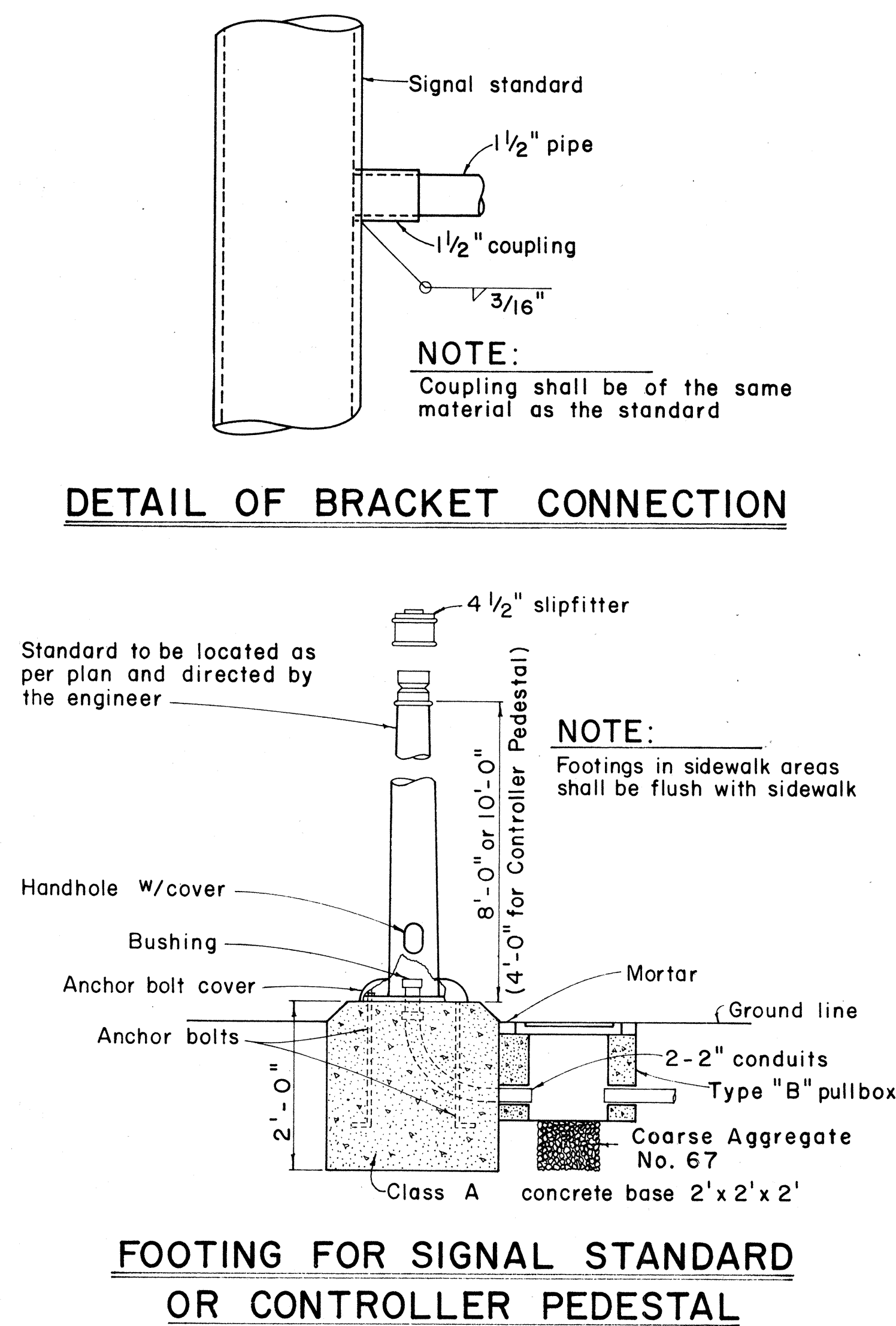
PEDESTRIAN PUSH BUTTON POST AND FOOTING



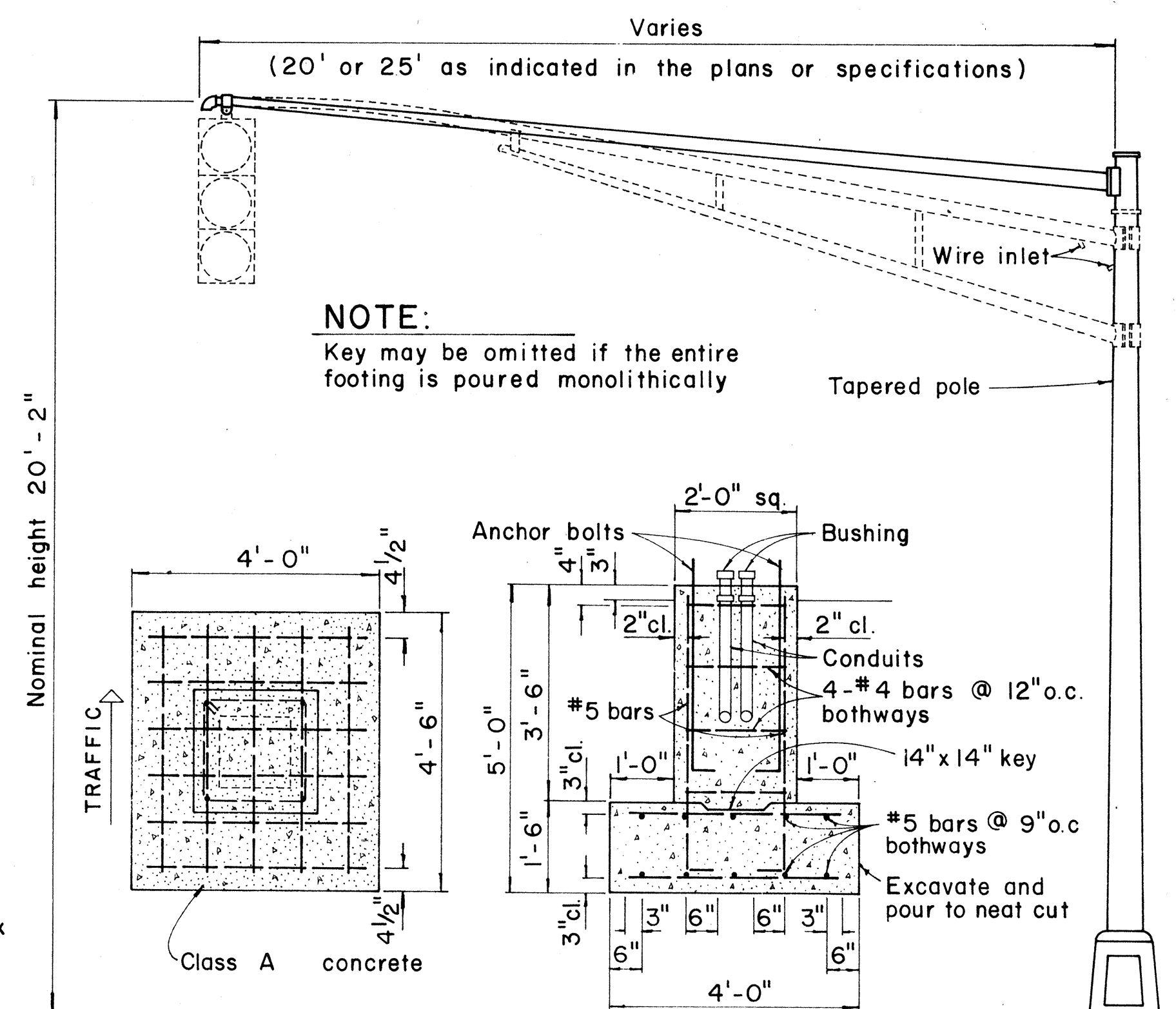
TYPICAL VEHICULAR AND PEDESTRIAN SIGNAL MOUNTINGS



TYPICAL SIGNAL ARRANGEMENTS



MAST ARM FOOTING AND STANDARD



APPROVAL RECOMMENDED:
Enichi Tanaka 12/29/69
TRAFFIC ENGINEER DATE

Shahid A. Shah 12/30/69
ASSISTANT CHIEF, ENGINEERING DATE

NO	REVISION	APPROVED BY	DATE

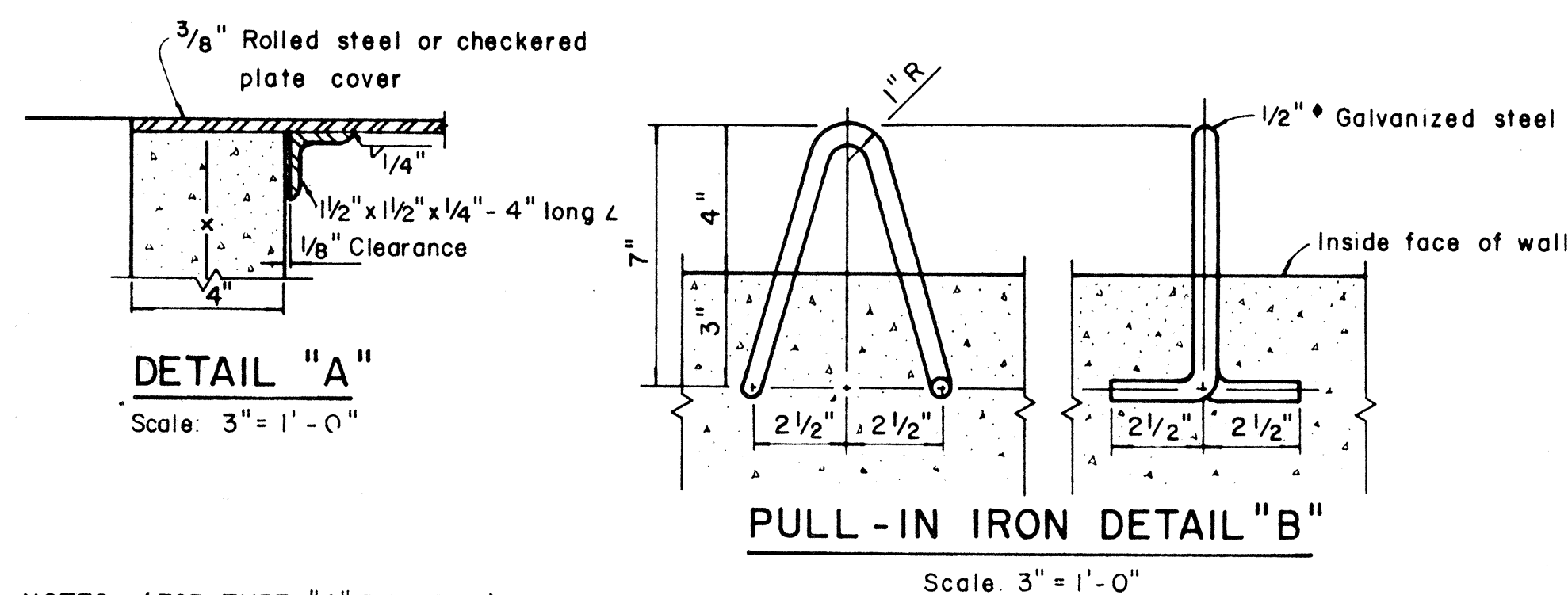
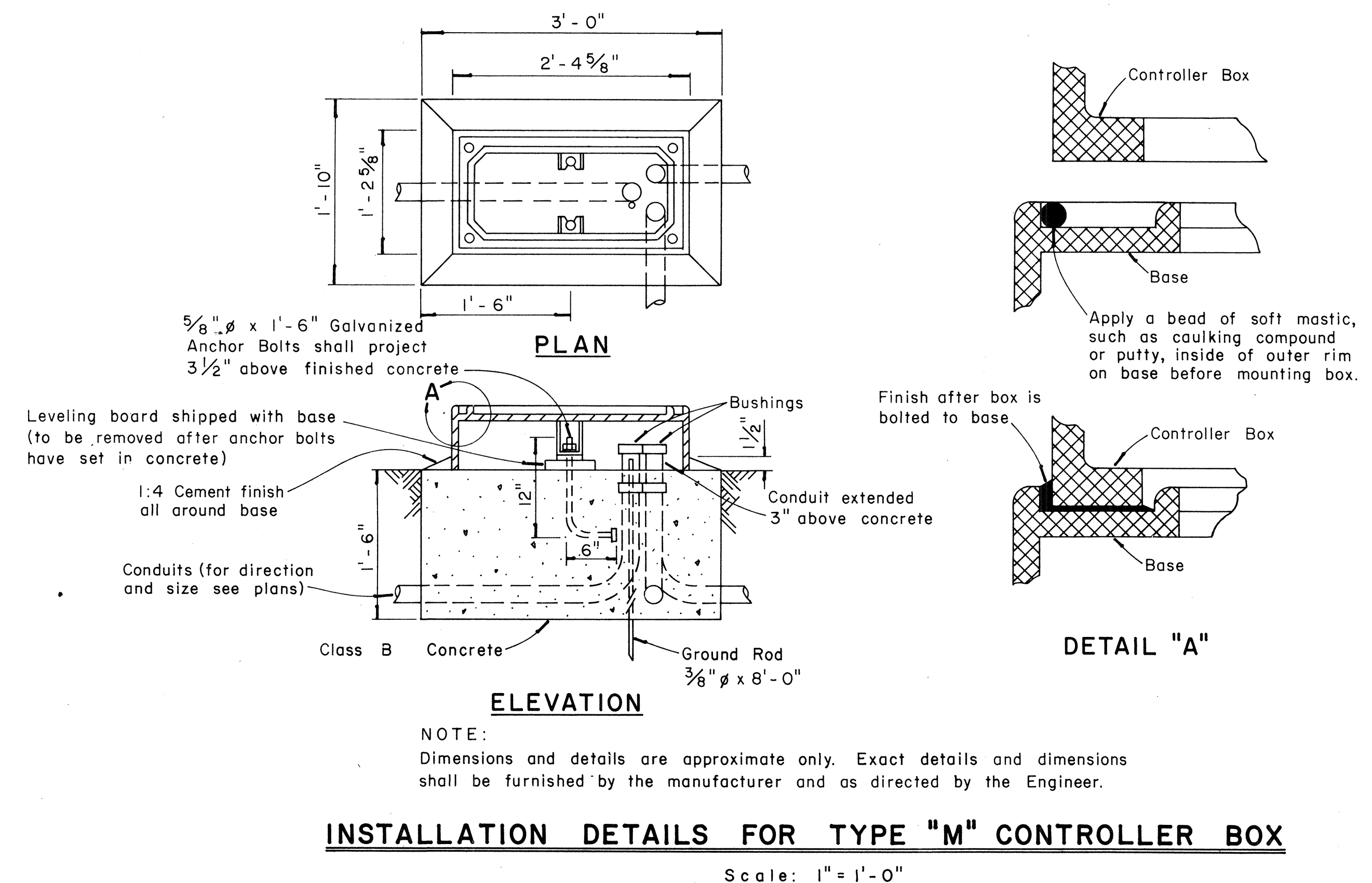
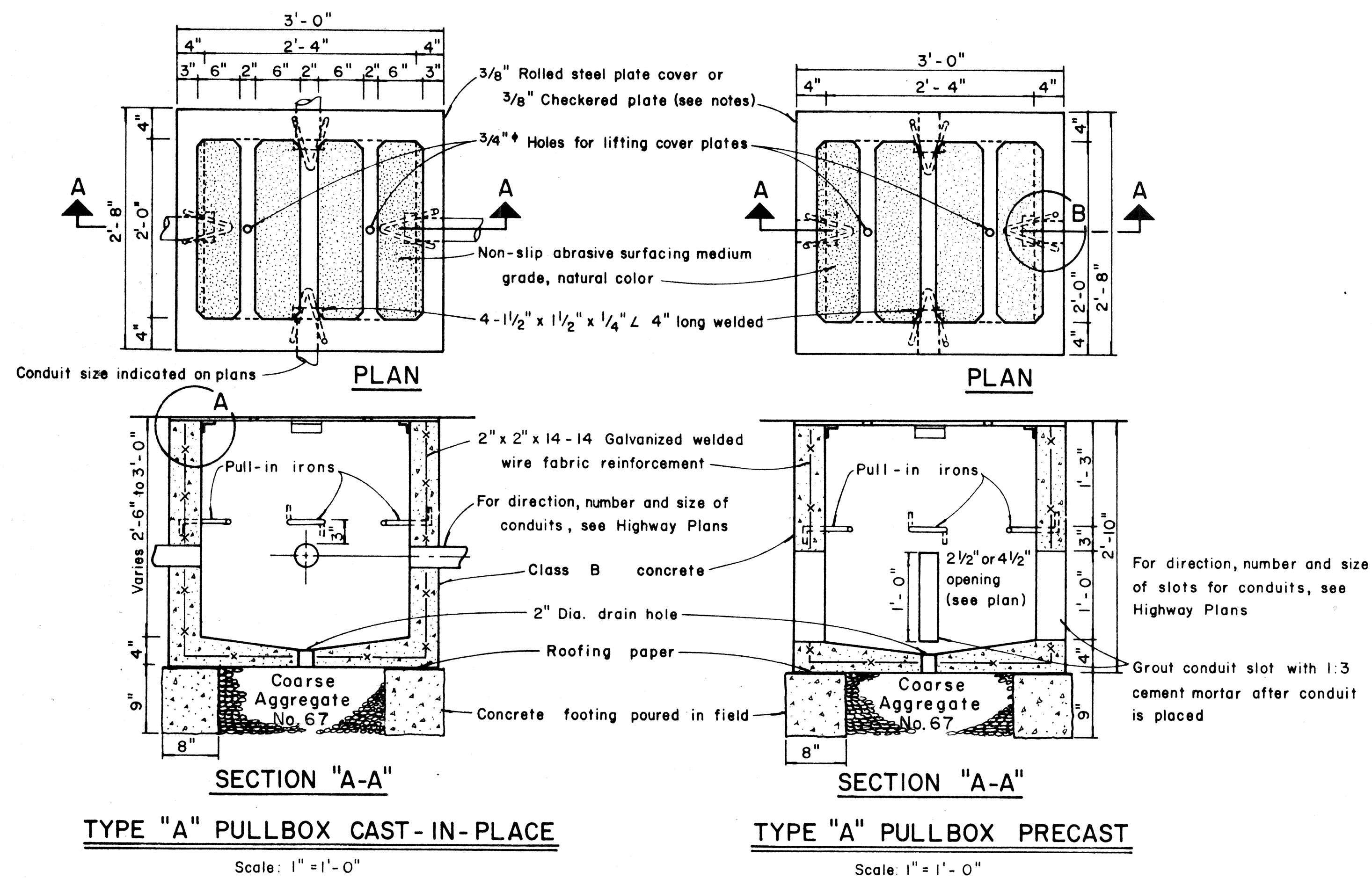
STATE OF HAWAII
DEPARTMENT OF TRANSPORTATION
HIGHWAYS DIVISION

TRAFFIC SIGNAL SYSTEM
MISCELLANEOUS DETAILS

Not to Scale January, 1968

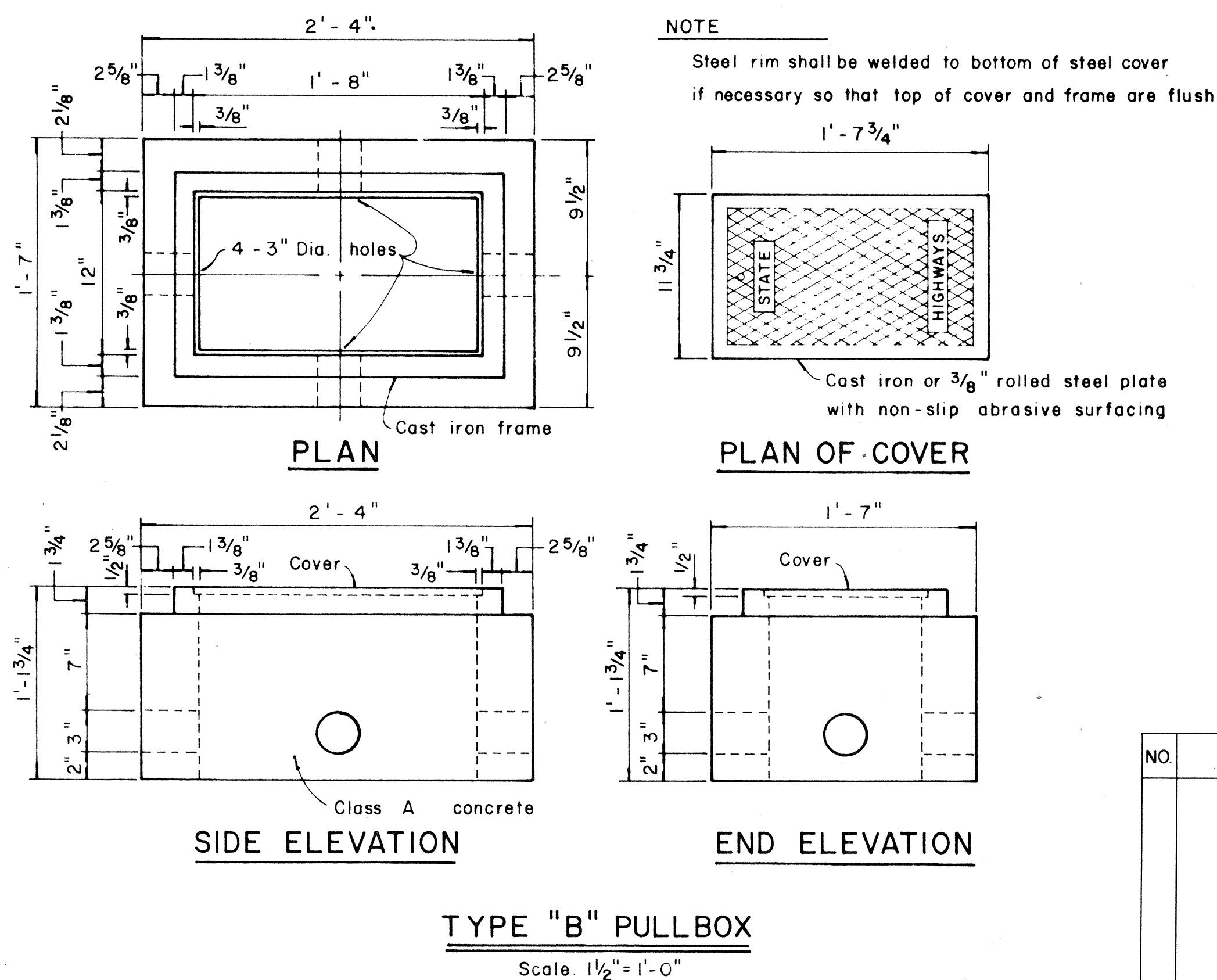
SHEET No. 1 OF 4 SHEETS DT 400

FED. ROAD DIST. NO.	STATE	FED. AID PROJ. NO.	FISCAL YEAR	SHEET NO.	TOTAL SHEETS
HAWAII	HAW.	740A-02-70	1970	5	7



- NOTES: (FOR TYPE "A" PULLBOX)

1. $\frac{3}{8}$ " Rolled steel plate cover with non-slip abrasive surfacing medium grade, natural color shall be used on all pullboxes located on sidewalk areas where pedestrians are walking.
2. $\frac{3}{8}$ " Checkered plate cover shall be used on all pullboxes located in median areas and other locations where there are no pedestrians walking.
3. Pull irons shall be placed opposite each conduit slot.
4. Covers on all pullboxes located in sidewalk areas shall be set flush with the concrete sidewalk.
5. Each pullbox shall have a pair of pull irons opposite each other for lifting purposes.



APPROVAL RECOMMENDED: Enichi Tanaka 12/29/69
TRAFFIC ENGINEER DATE

APPROVED: _____
ASSISTANT CHIEF, ENGINEERING

DATE: 12-30-69

NO.	REVISION	APPROVED BY	DATE

STATE OF HAWAII
DEPARTMENT OF TRANSPORTATION
HIGHWAYS DIVISION

STANDARD DETAILS

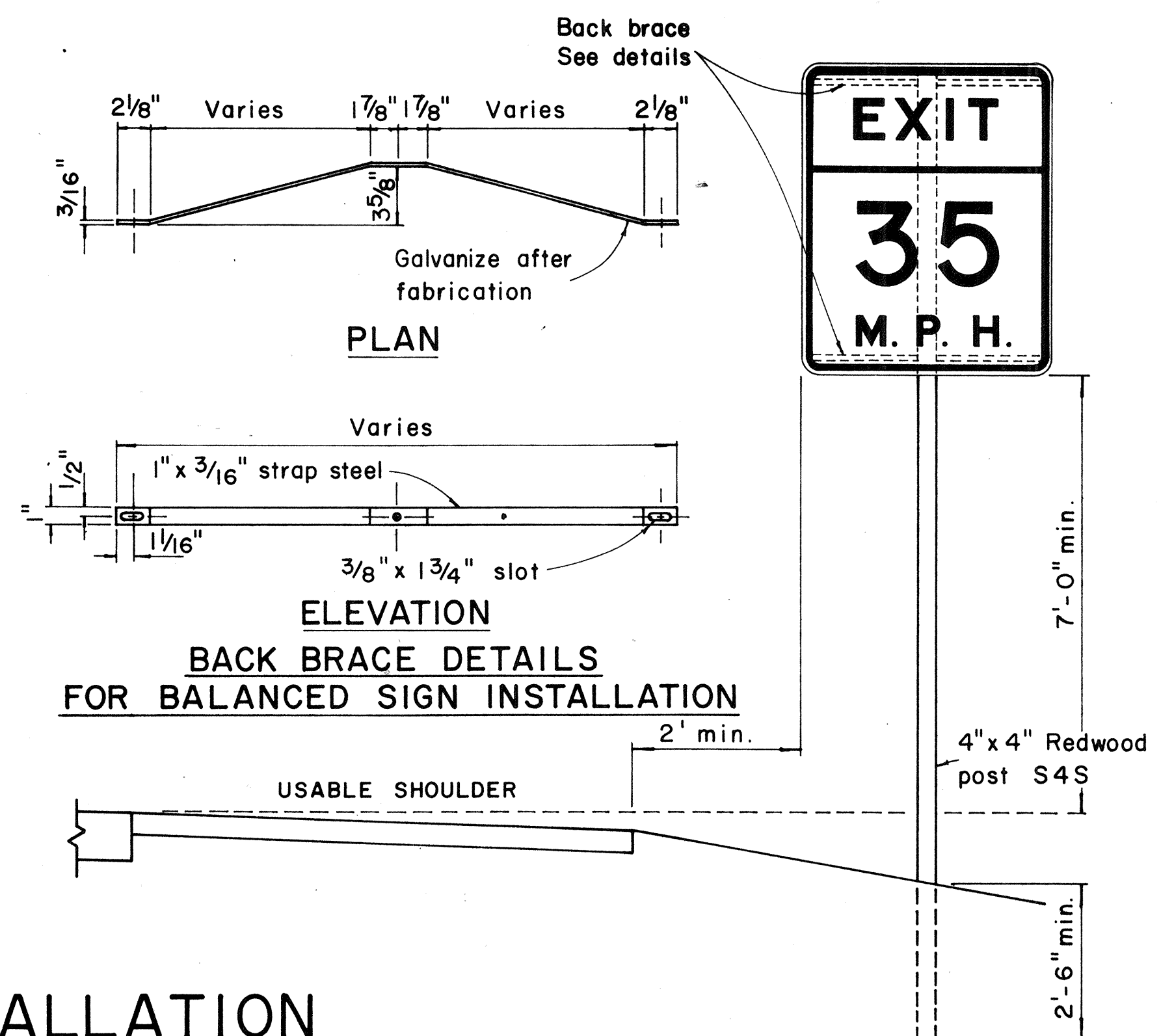
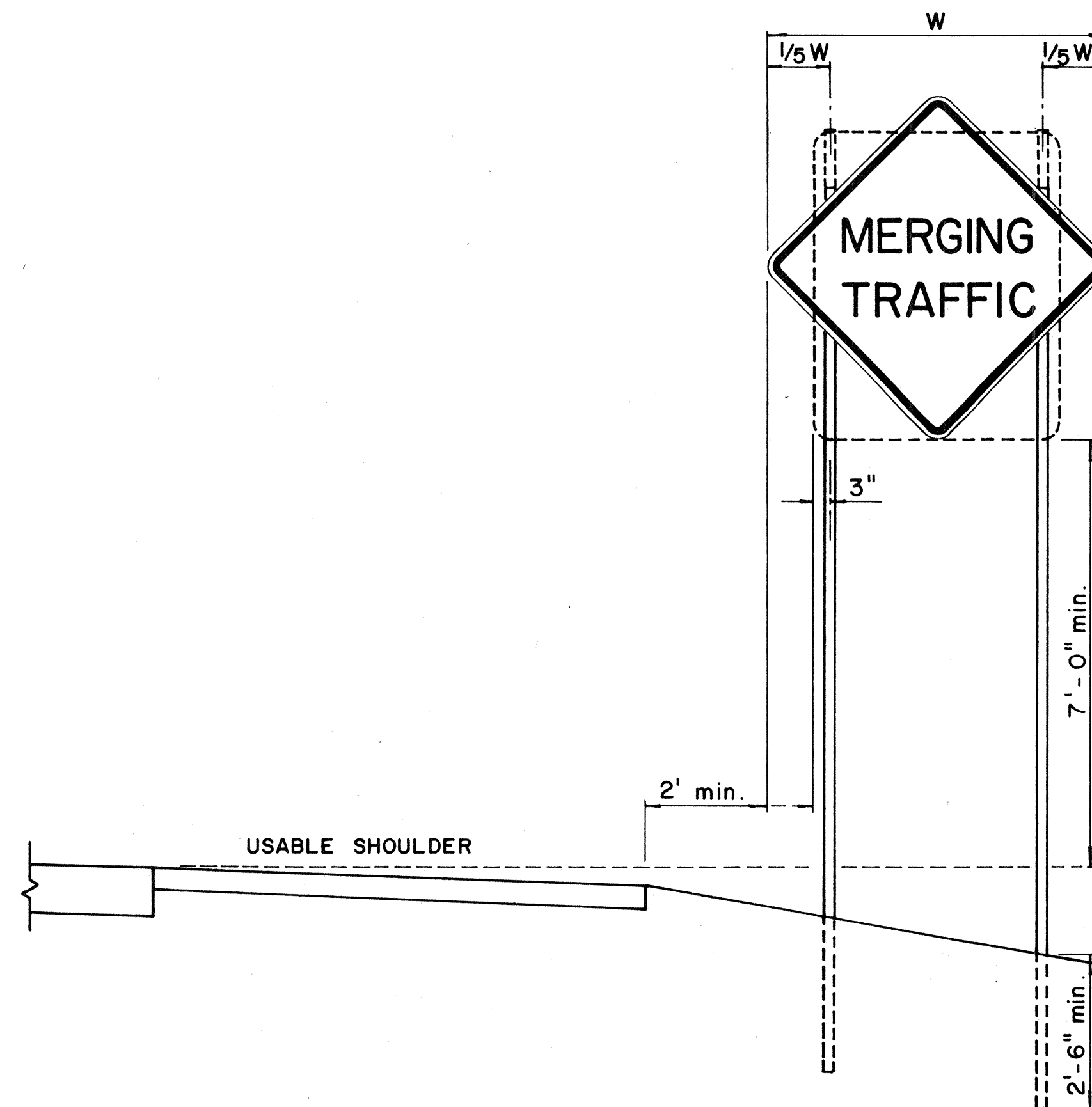
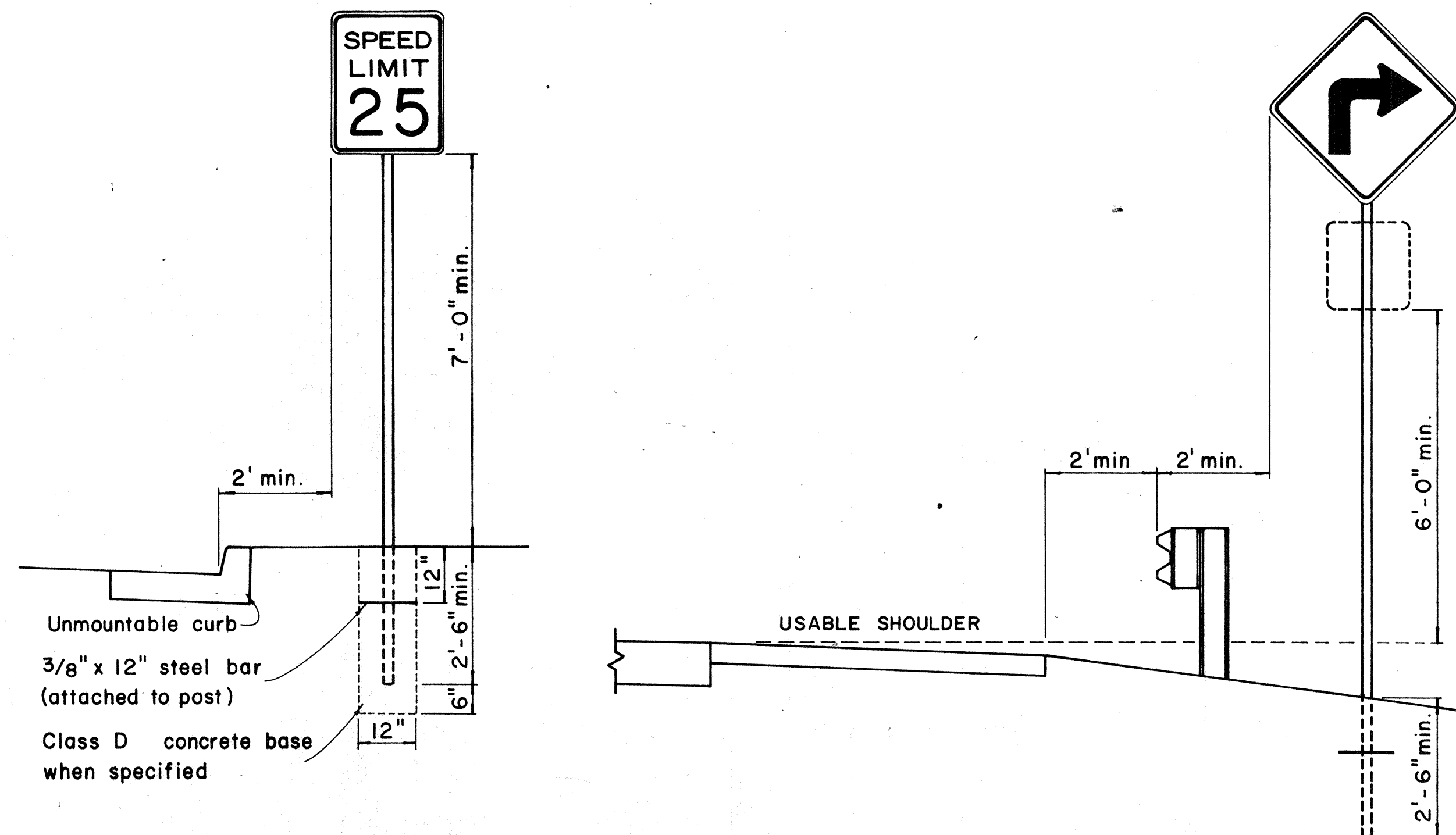
PULLBOXES

AND
TYPE "M" CONTROLLER BOX

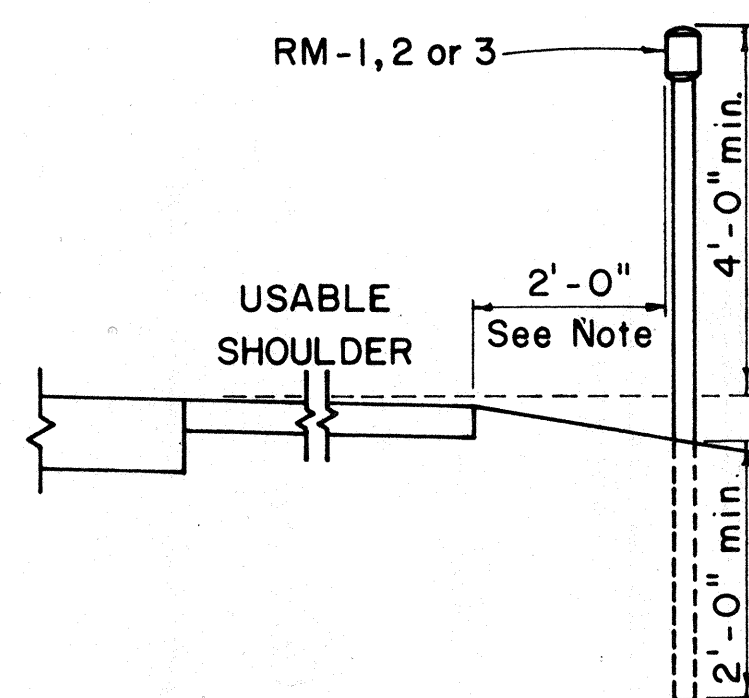
Scale as noted Date:

SHEET No. 2 OF 4 SHEETS DT 402

FED. ROAD DIST. NO.	STATE	FED. AID PROJ. NO.	FISCAL YEAR	SHEET NO.	TOTAL SHEETS
HAWAII	HAW.	740A-0270	1970	6	7

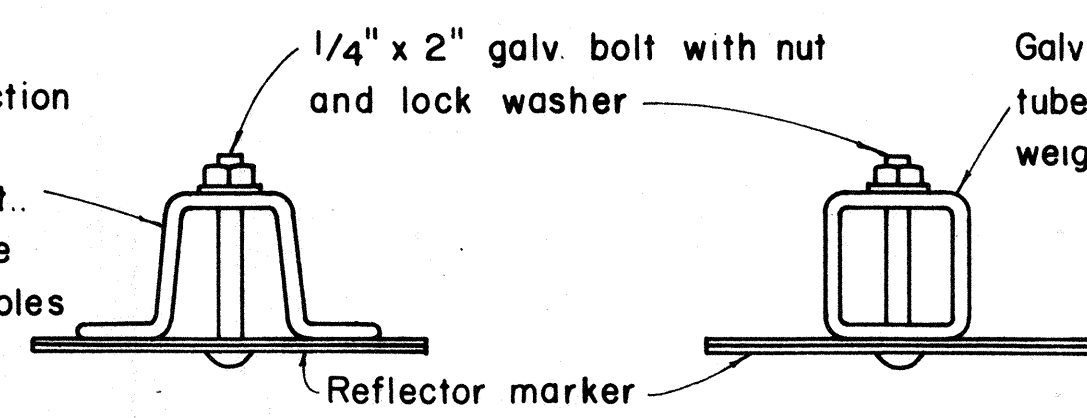


HEIGHT AND LATERAL LOCATION OF SIGNS - TYPICAL INSTALLATION

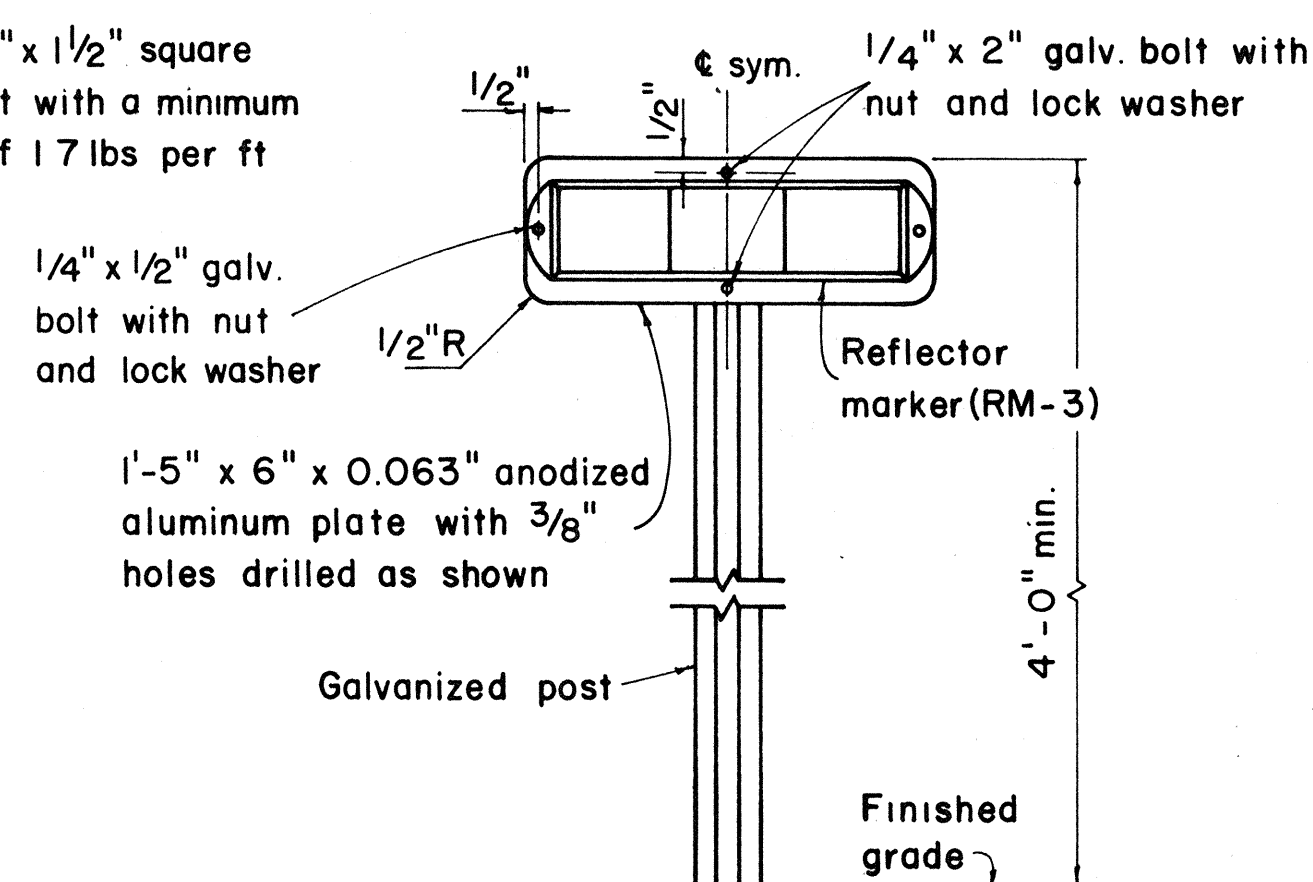


ROAD DELINEATOR

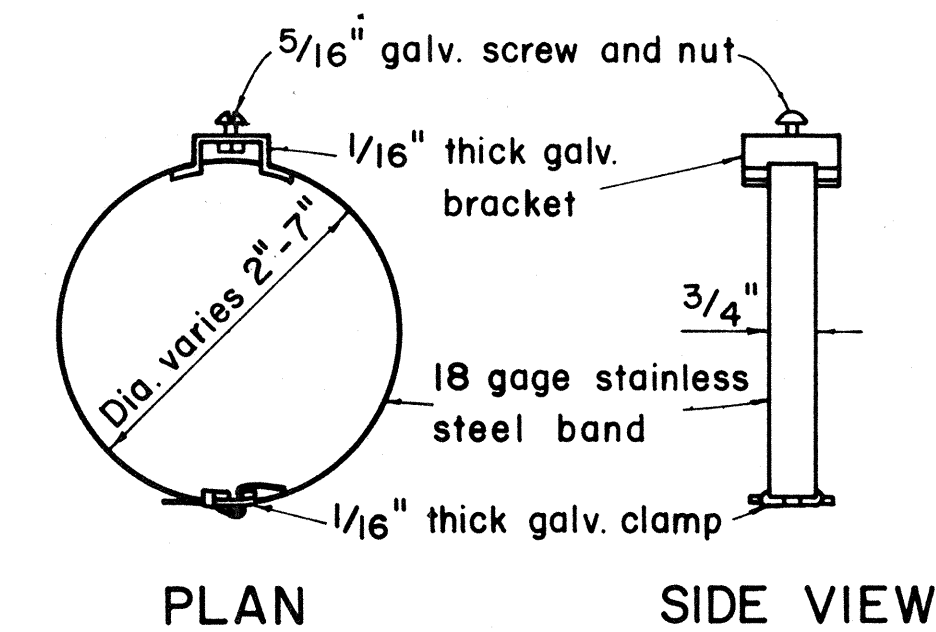
Galv. flanged channel 1/8" x 3/16" rolled section post with a minimum weight of 2 lbs. per ft. Upper 2 ft. shall have a single row of 3/8" holes centered in the web at 1" o.c.



TYPICAL SECTION OF ROAD DELINEATOR

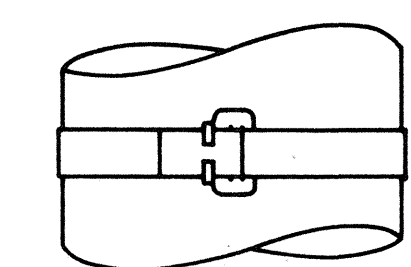


TYPICAL DETAIL
HORIZONTAL REFLECTOR MARKER
RM-3H



PLAN

SIDE VIEW



FRONT VIEW

TYPICAL BAND BRACKET FOR MOUNTING TRAFFIC SIGNS

GENERAL NOTES:

- Sign posts shall be 2" galv. standard pipe or 2" x 2" galv. sq. tube post.
- Signs 48" and wider or larger than 10 sq. ft. in area shall be mounted on two 2" galv. standard pipe or two 2" x 2" galv. sq. tube post or 4" x 4" redwood post S4S.
- Signs shall be attached to post with 5/16" galv. bolts with nuts and 7/8" x 0.06 stainless steel washers with neoprene rubber gasket.
- Sign posts shall extend 3 1/2" above sign where required for City and County street name signs.
- Reflector markers RM-1, 2, 3 shall be glass sphere reflector markers with 4" x 5" reflector units (as shown) or plastic prismatic reflector markers with 3" diameter reflector units.
- Clearance markers (RM-3, RM-4) shall be installed with the edge of the marker in line with the inner edge of the obstruction.
- (R) or (L) indicates right or left and shall be as shown on the plans.

APPROVAL RECOMMENDED:
Eichi Tanaka 12/29/69
TRAFFIC ENGINEER DATE

APPROVED:
[Signature] 12-30-69
ASSISTANT CHIEF, ENGINEERING DATE

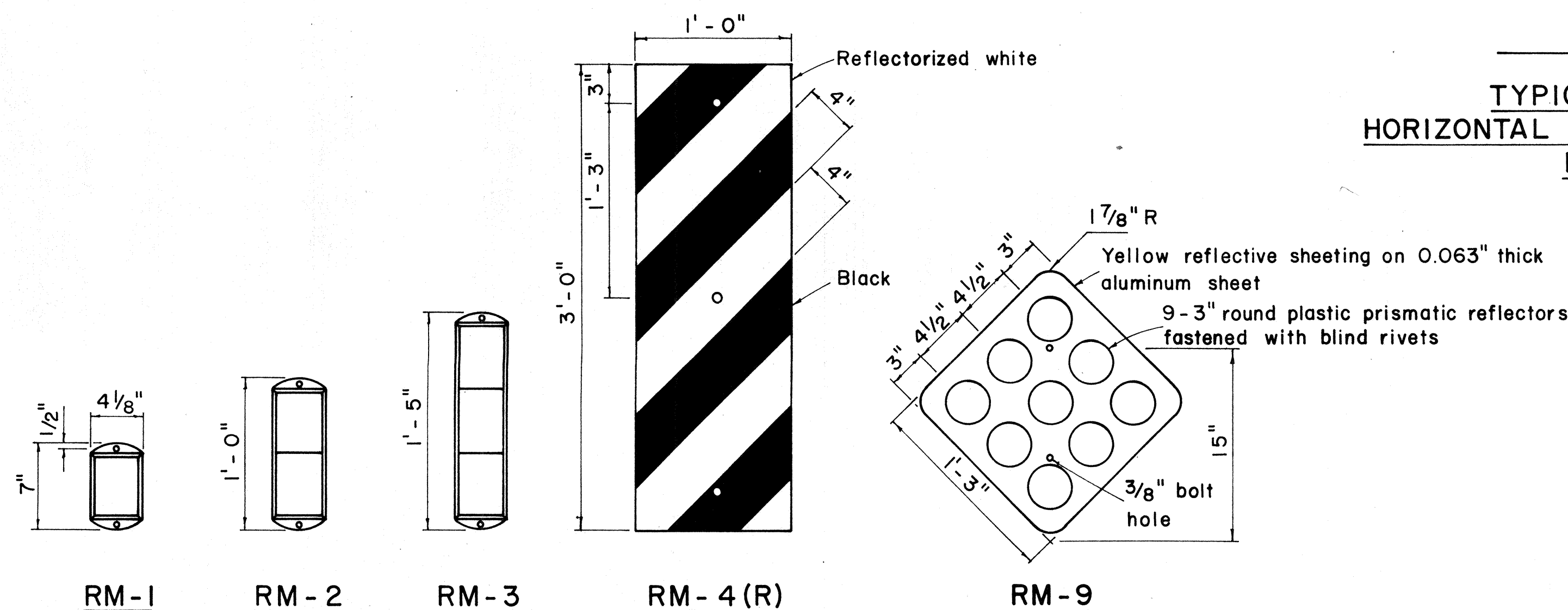
NO.	REVISION	APPROVED BY	DATE

STATE OF HAWAII
DEPARTMENT OF TRANSPORTATION
HIGHWAYS DIVISION

STANDARD DETAILS
MISCELLANEOUS SIGN DETAILS

Not to scale March, 1968

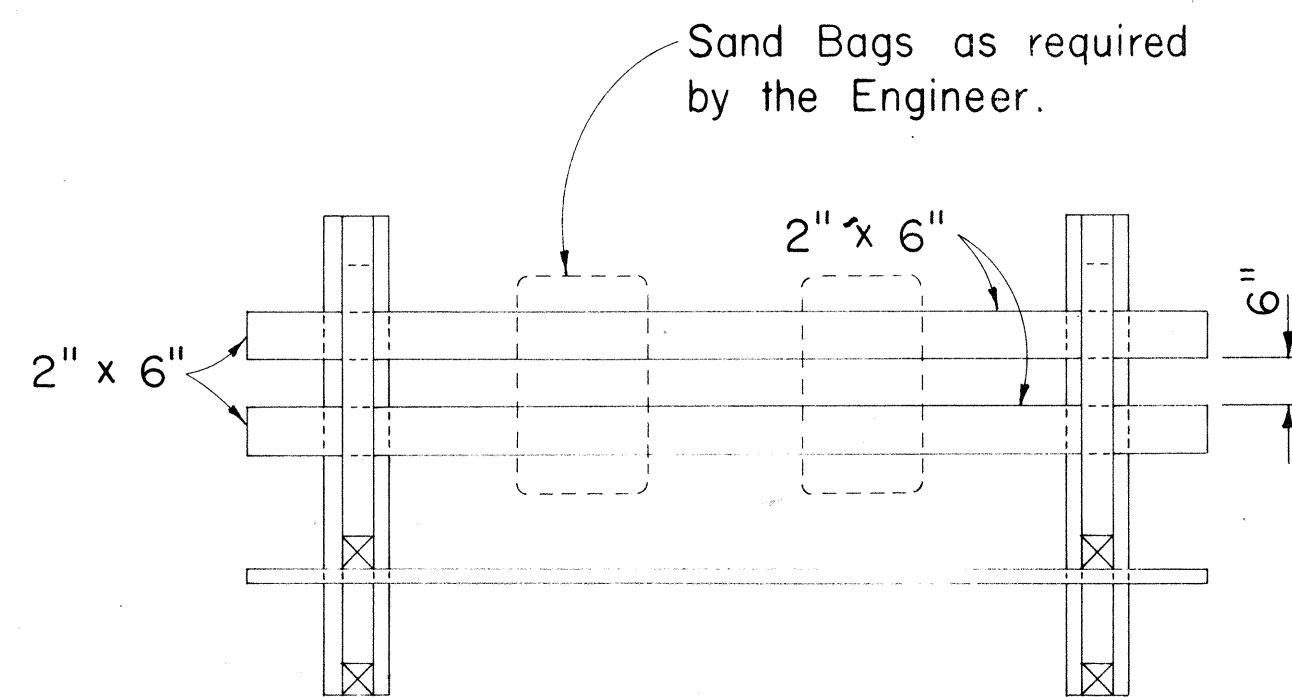
SHEET No. 3 OF 4 SHEETS DT 100



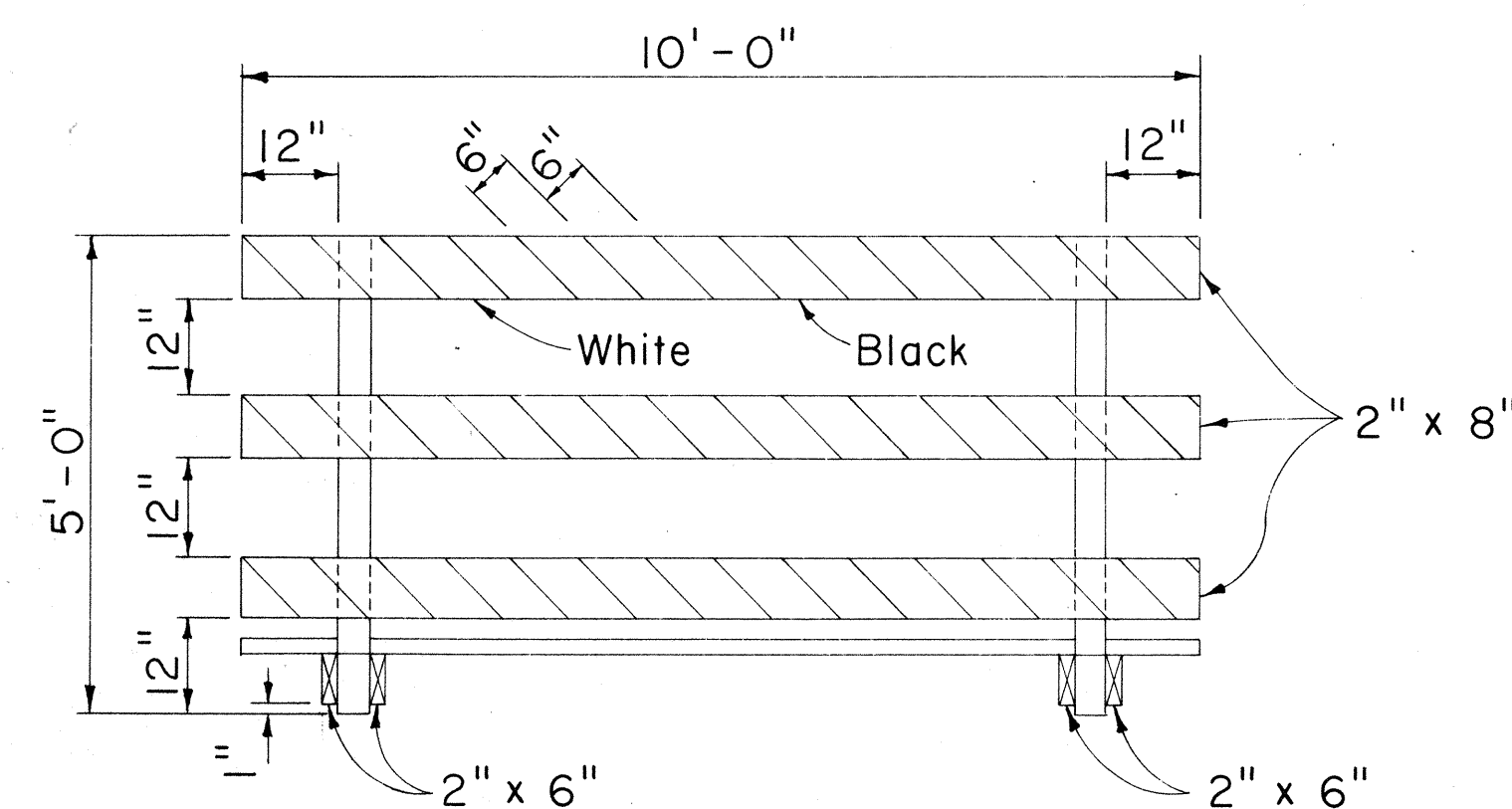
REFLECTOR MARKERS

DATE	
DESIGNED BY	
CHECKED BY	
NO.	

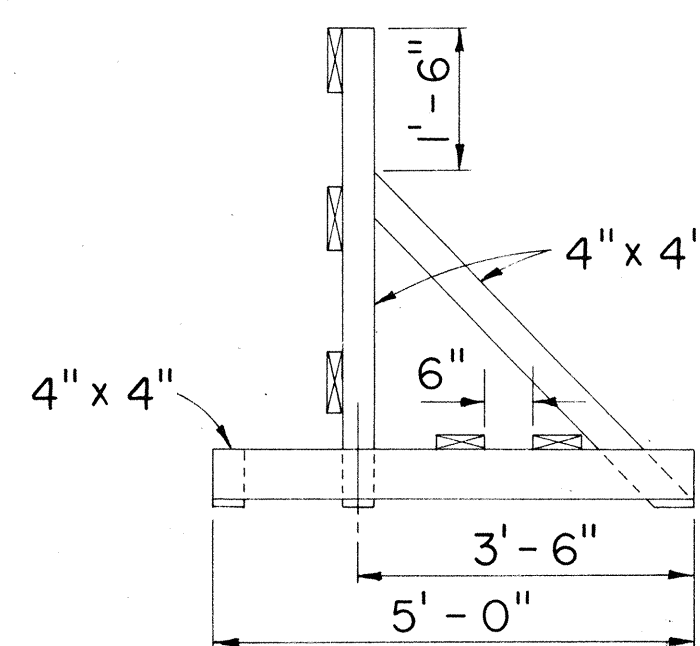
FED. ROAD DIST. NO.	STATE	FED. AID PROJ. NO.	FISCAL YEAR	SHEET NO.	TOTAL SHEETS
HAWAII	HAW.	740A-02-70	1970	7	7



PLAN VIEW



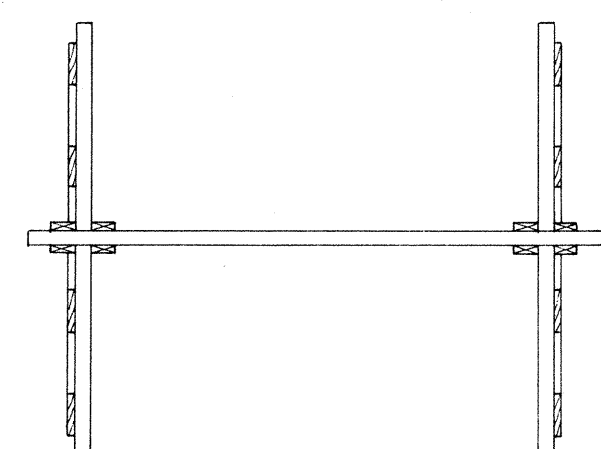
FRONT VIEW



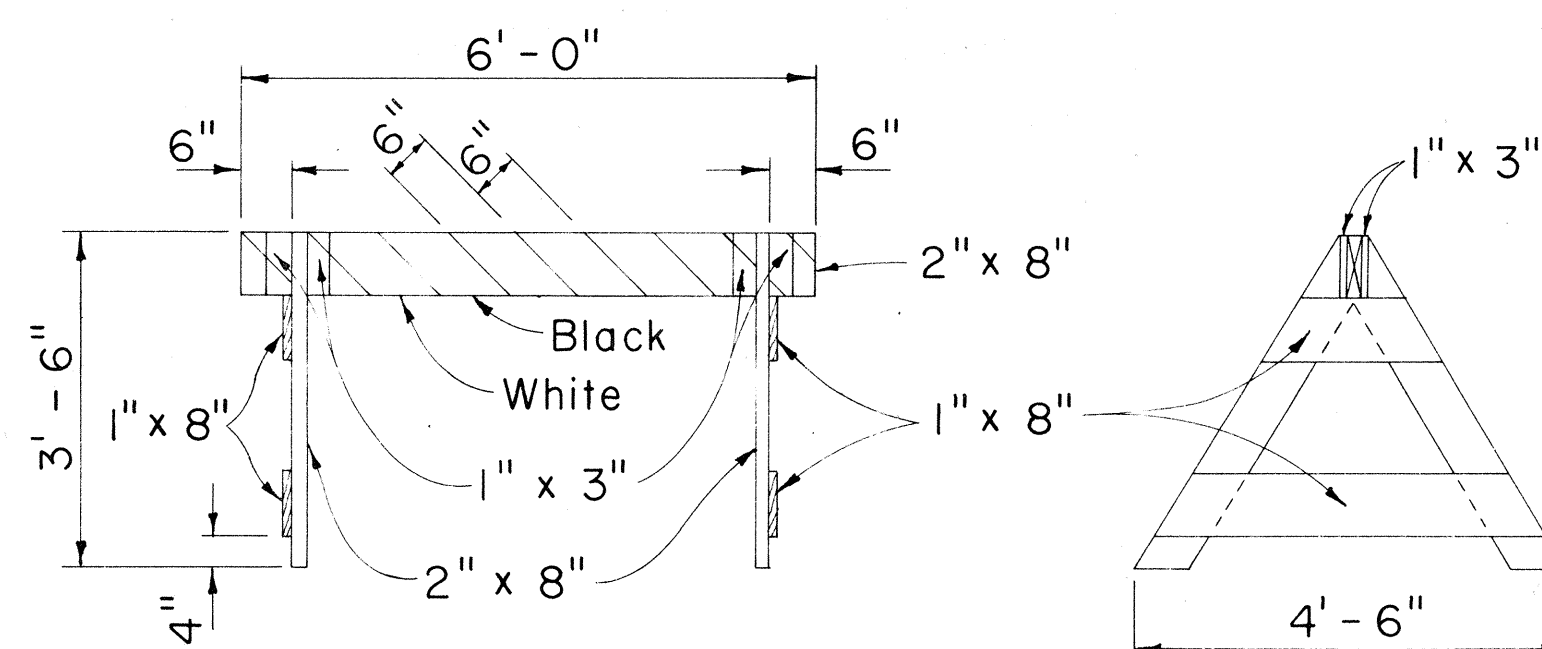
END VIEW

CLASS I BARRICADE

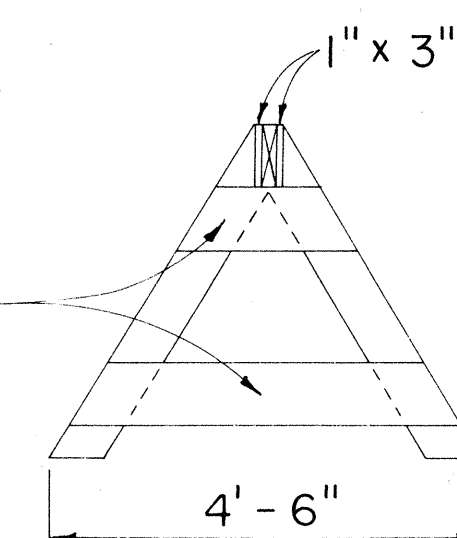
Scale: 1/2" = 1'-0"



PLAN VIEW



FRONT VIEW



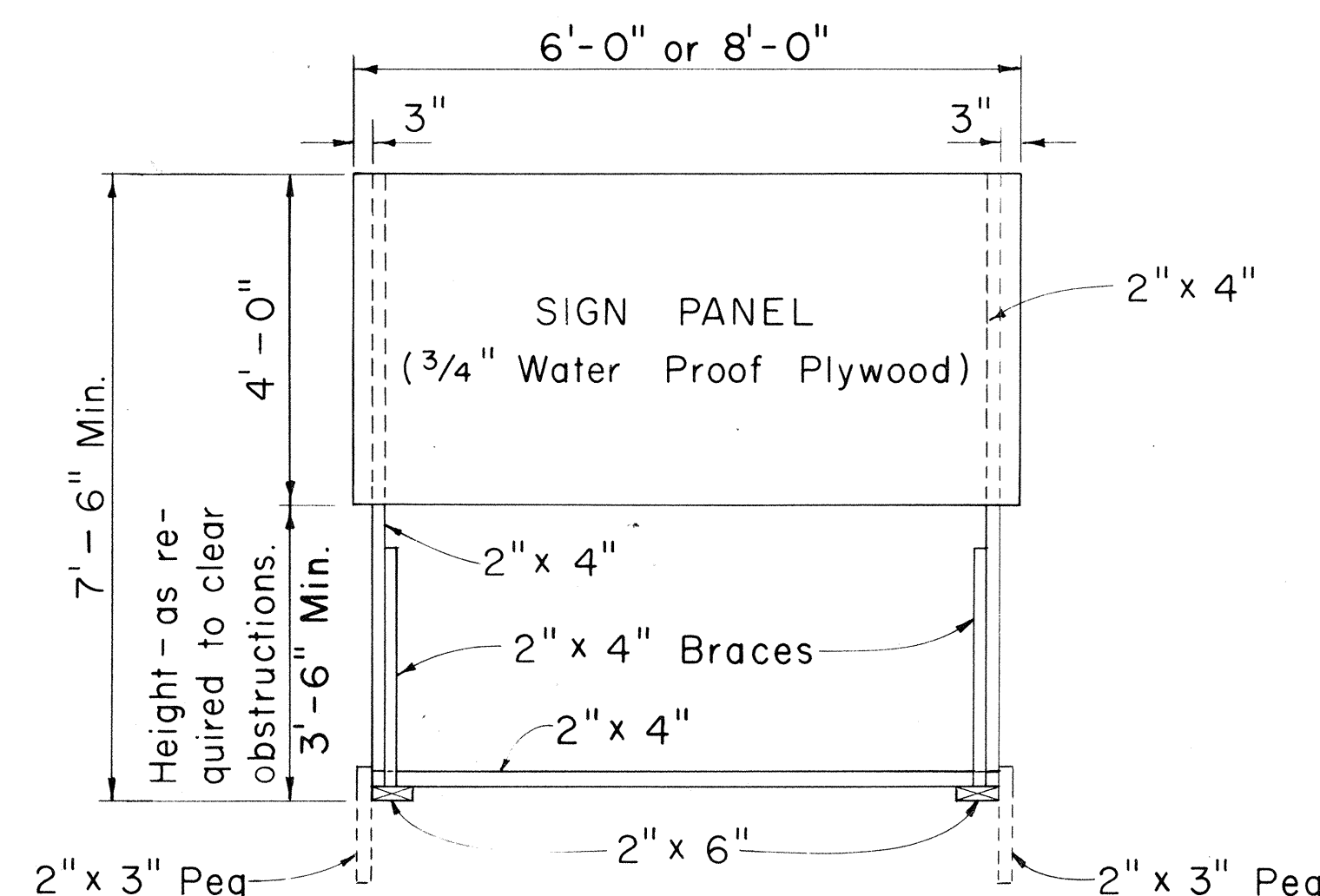
END VIEW

CLASS II BARRICADE

Scale: 1/2" = 1'-0"

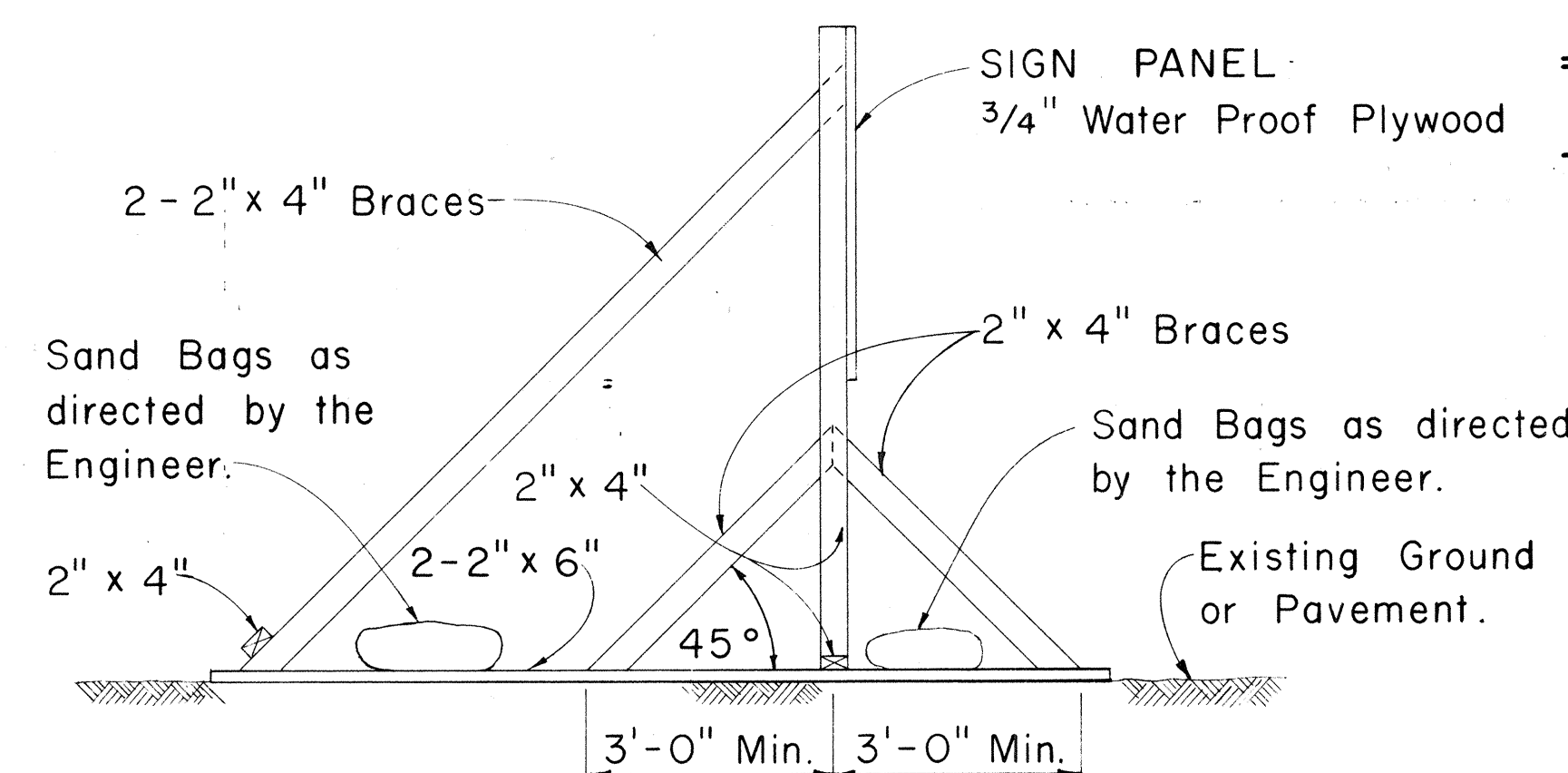
GENERAL NOTES

1. The Contractor shall construct, install and maintain the wood barricades at the locations shown on the Plans.
2. The permanent wood barricades shall be left in place or relocated upon completion of the project as ordered by the Engineer and are to become State property.



FRONT VIEW

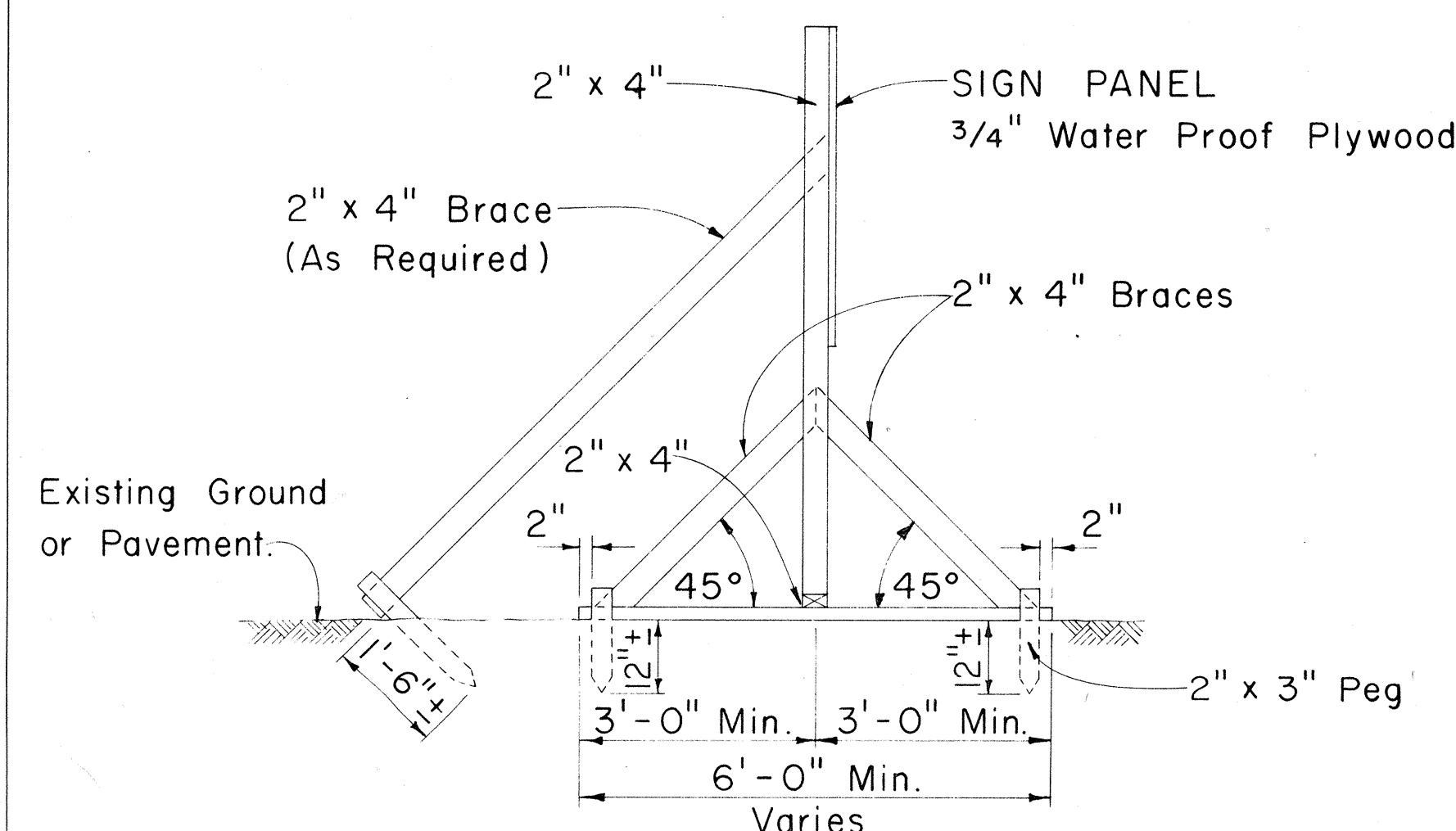
Scale: 1/2" = 1'-0"



SIDE VIEW

(SIGN FRAME WEIGHTED DOWN)

Scale: 1/2" = 1'-0"



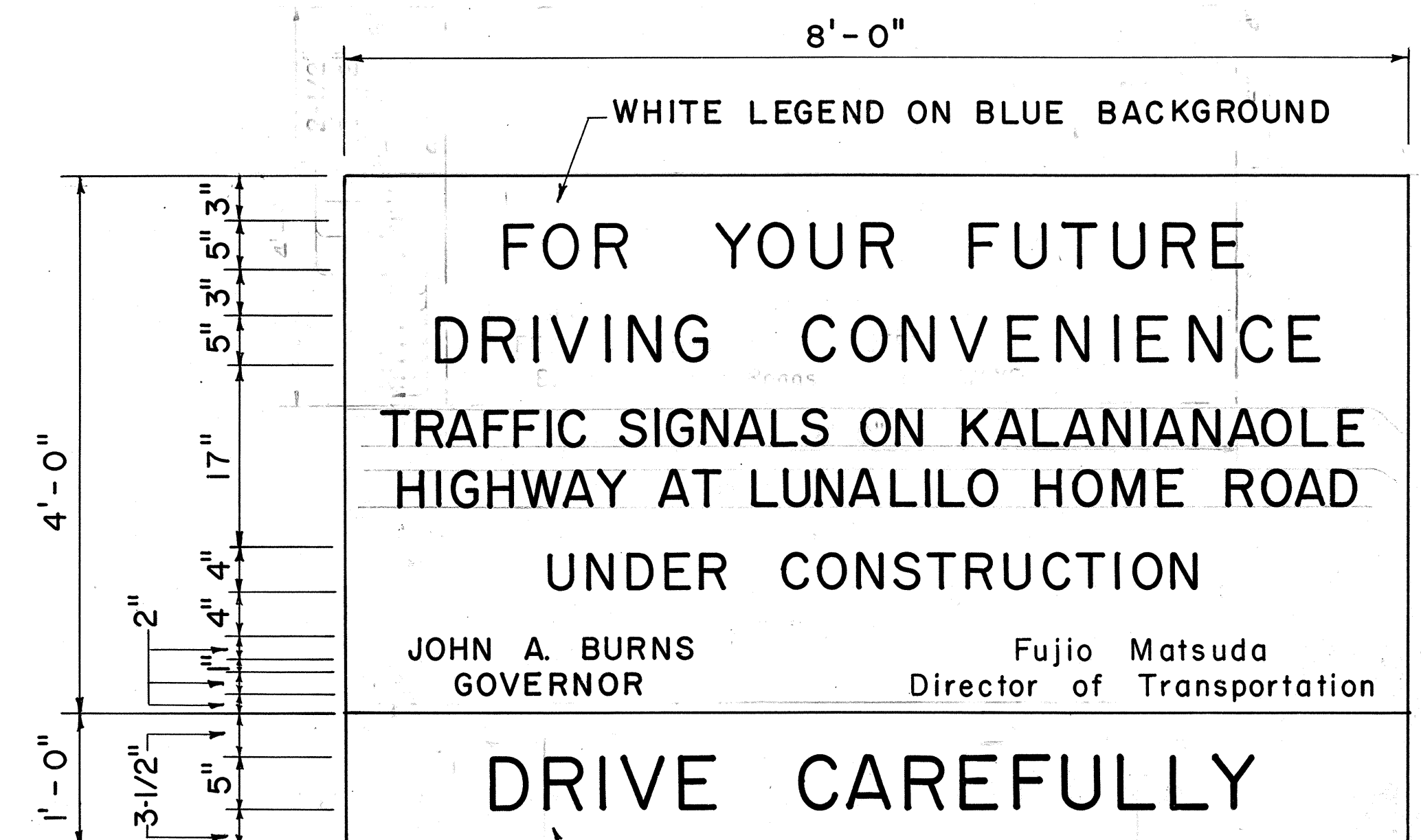
SIDE VIEW

(SIGN FRAME ANCHORED IN GROUND)

Scale: 1/2" = 1'-0"

CONSTRUCTION IDENTIFICATION SIGN

Scale: As Shown



GENERAL NOTES

1. The Contractor shall construct the sign supports and frames, and install the sign panels at the locations as ordered by the Engineer.
2. At the end of construction the Contractor shall remove the sign panels and return them to the State Highway Maintenance Yard. Sign supports and frames shall be removed and cleared from the project site.
3. The sign panels shall be picked up by the Contractor at the State Highway Maintenance Yard, 727 Kakoi Street, Honolulu.

STATE OF HAWAII
DEPARTMENT OF TRANSPORTATION
HIGHWAYS DIVISION
TYPICAL DETAILS
PROJECT INFORMATIONAL SIGN
AND
WOOD BARRICADES

Scale: As Shown Date: SHEET No. 4 OF 4 SHEETS