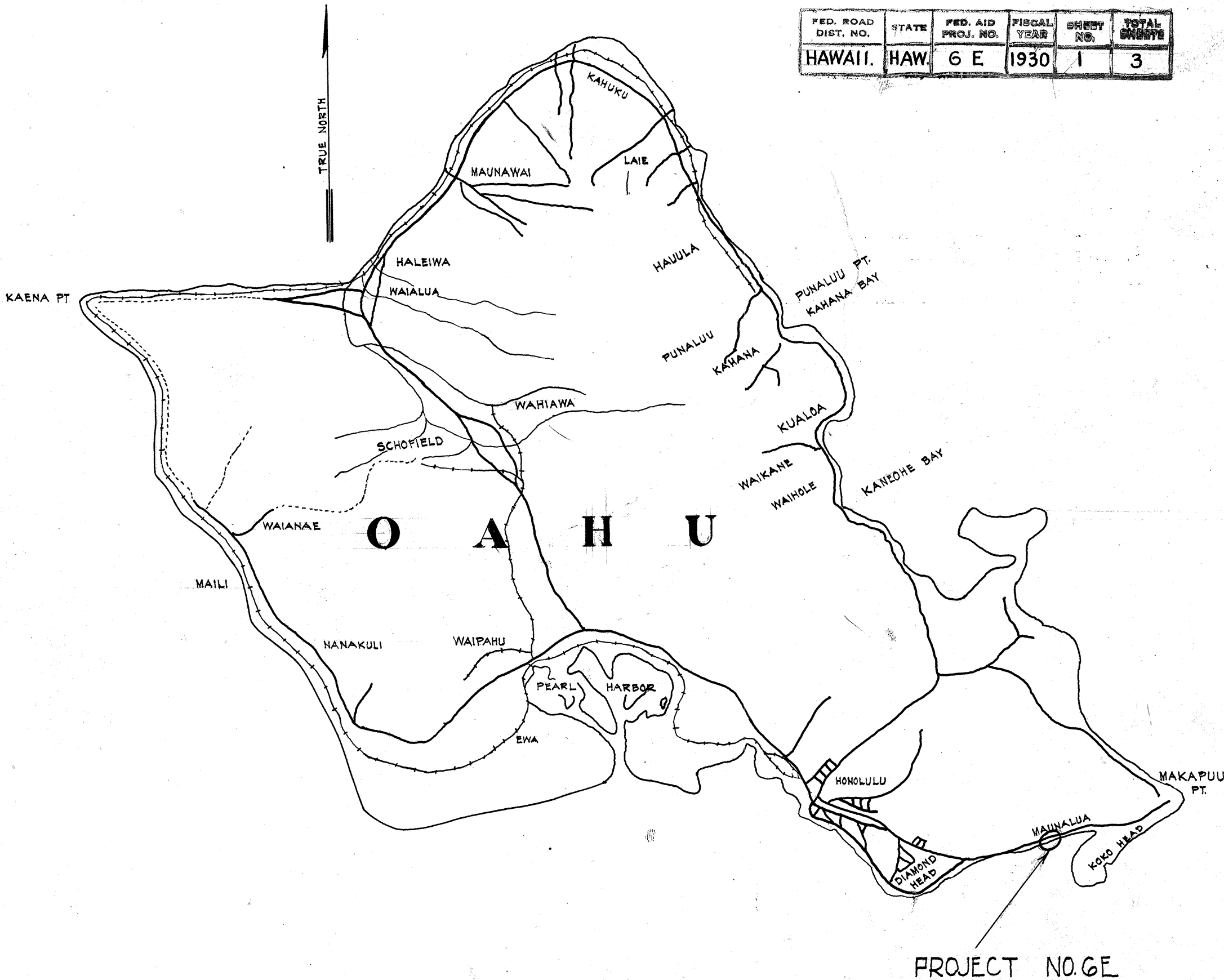


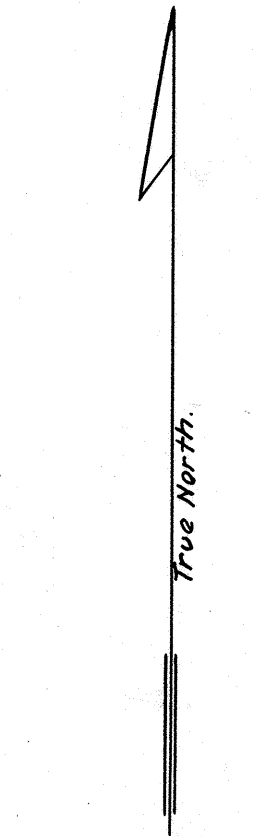
INDEX TO DRAWINGS	
SHEET NO.	DESCRIPTIONS
1	TITLE SHEET
2	PLAN, PROFILE AND TYPICAL ROAD SECTION
3	ROAD CROSS SECTIONS

TERRITORY OF HAWAII  
TERRITORIAL HIGHWAY DEPARTMENT  
HONOLULU T.H.  
PLANS OF  
**KALANIANA'OLE HIGHWAY**  
FEDERAL AID PROJECT NO. 6E.  
MAUNALUA DISTRICT.  
OAHU T.H.

SCALE  
PLAN 1 INCH = 40 FEET  
PROFILE HOR 1 INCH = 40 FEET  
VER 1 INCH = 2 FEET  
CROSS SECTION HOR 1 INCH = 5 FEET  
VER 1 INCH = 5 FEET



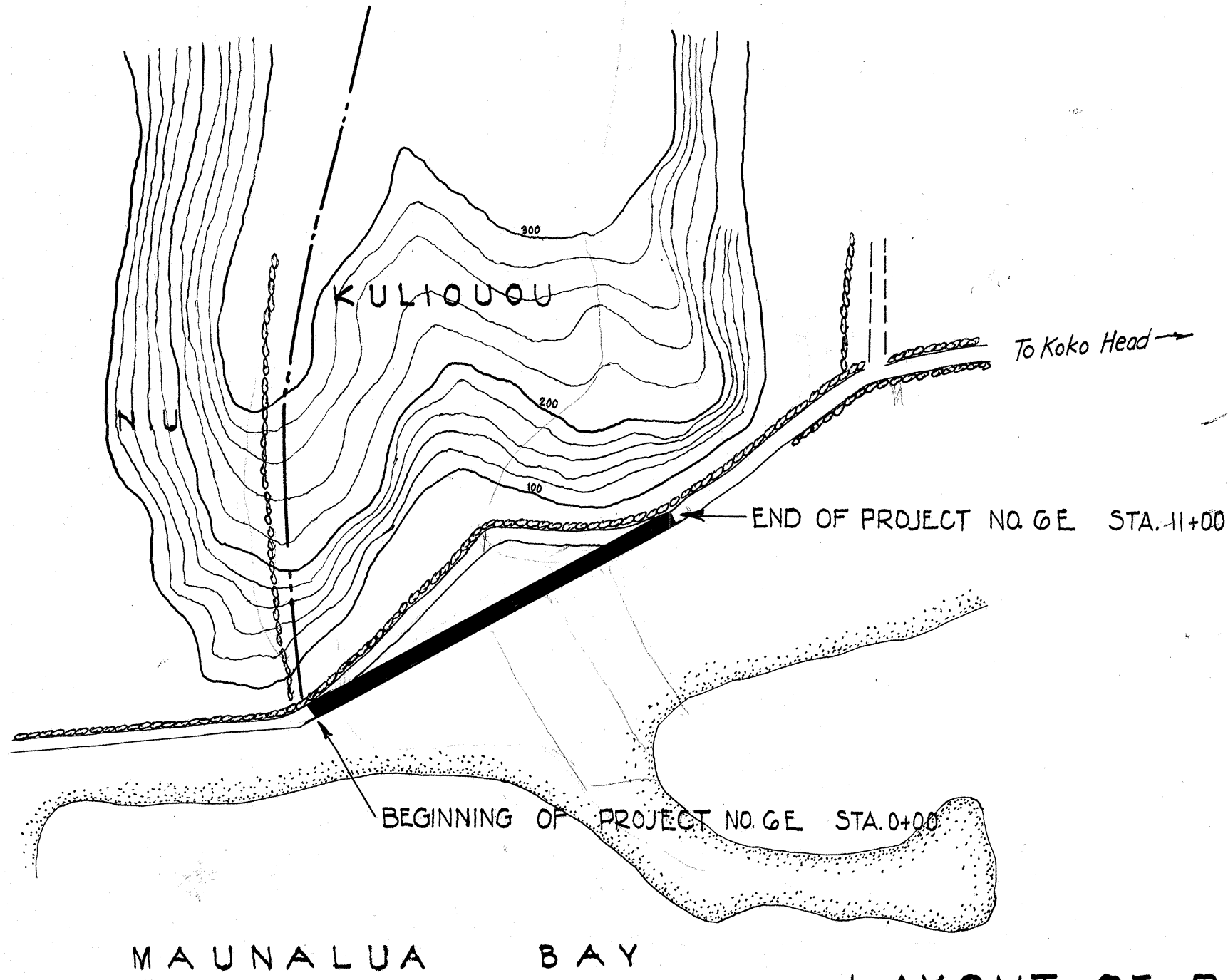
FED. ROAD DIST. NO.	STATE	FED. AID PROJ. NO.	FISCAL YEAR	SHEET NO.	TOTAL SHEETS
HAWAII.	HAW.	6 E	1930	1	3



CONVENTIONAL SIGNS

PAVEMENT TO BE CONSTRUCTED

NOTE:  
All Poles and braces will be moved to 6' clear of the pavement by the Telephone and Electric Companies.



LAYOUT OF PROJECT  
SCALE 1 INCH = 400 FEET  
GROSS AND NET LENGTH = 0.2083 MILES

APPROVED  
*[Signature]*  
CHIEF ENGINEER, Dept. of Public Works  
City and County of Honolulu  
APPROVED  
*[Signature]*  
TERRITORIAL HIGHWAY ENGINEER

RECOMMENDED FOR APPROVAL  
*[Signature]* 10/24/1930.  
PRINCIPAL HIGHWAY ENGINEER  
Bureau of Public Roads  
RECOMMENDED FOR APPROVAL  
[Redacted]  
CHIEF ENGINEER Bureau of Public Roads  
APPROVED  
[Redacted]  
DIRECTOR Bureau of Public Roads

4182.1

Plan No.	Page No.	Sheet No.	Folder No.	Plan No.
6	14	1	1	