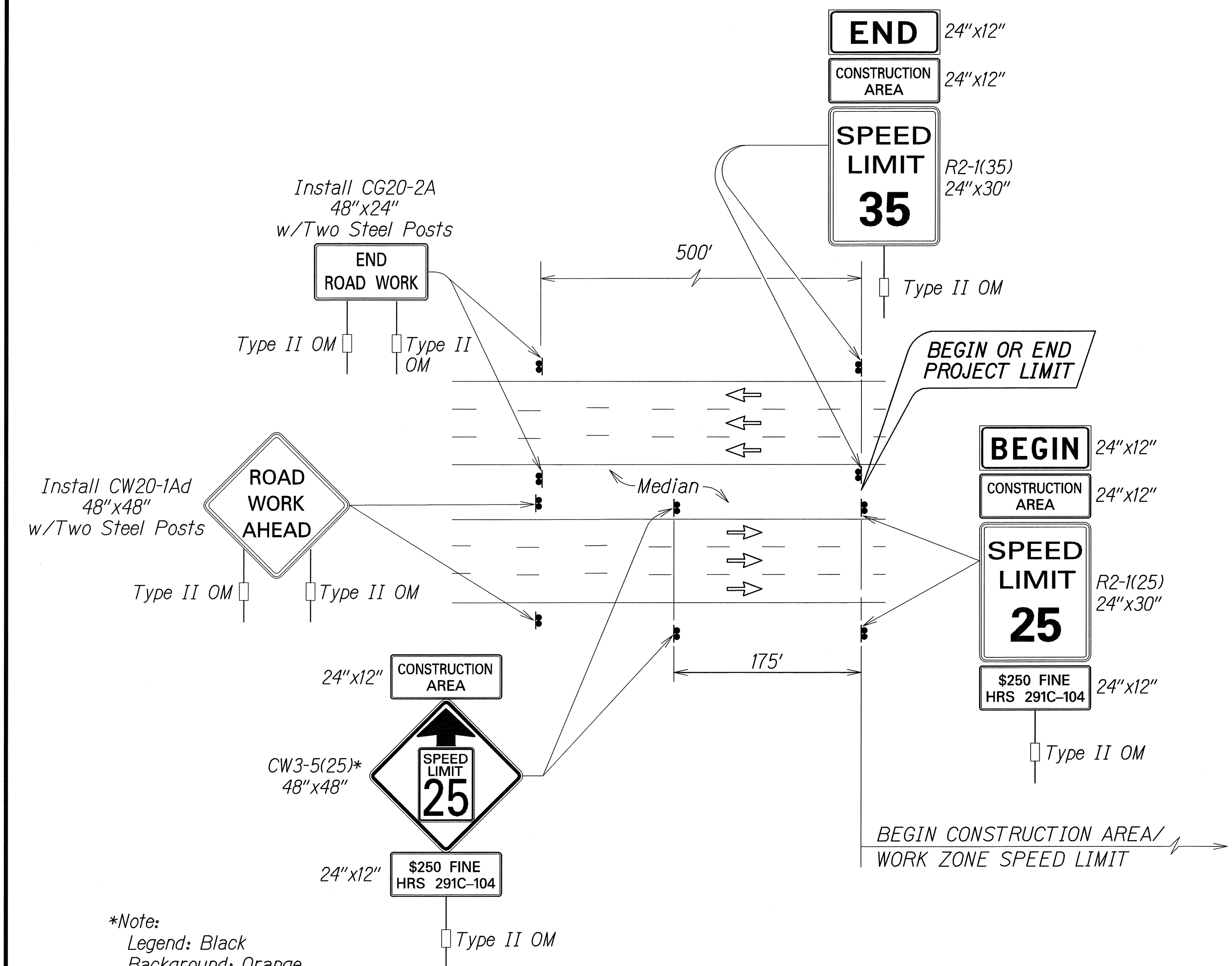


FED. ROAD DIST. NO.	STATE	PROJ. NO.	FISCAL YEAR	SHEET NO.	TOTAL SHEETS
HAWAII	HAW.	65AB-01-04M	2012	70	81



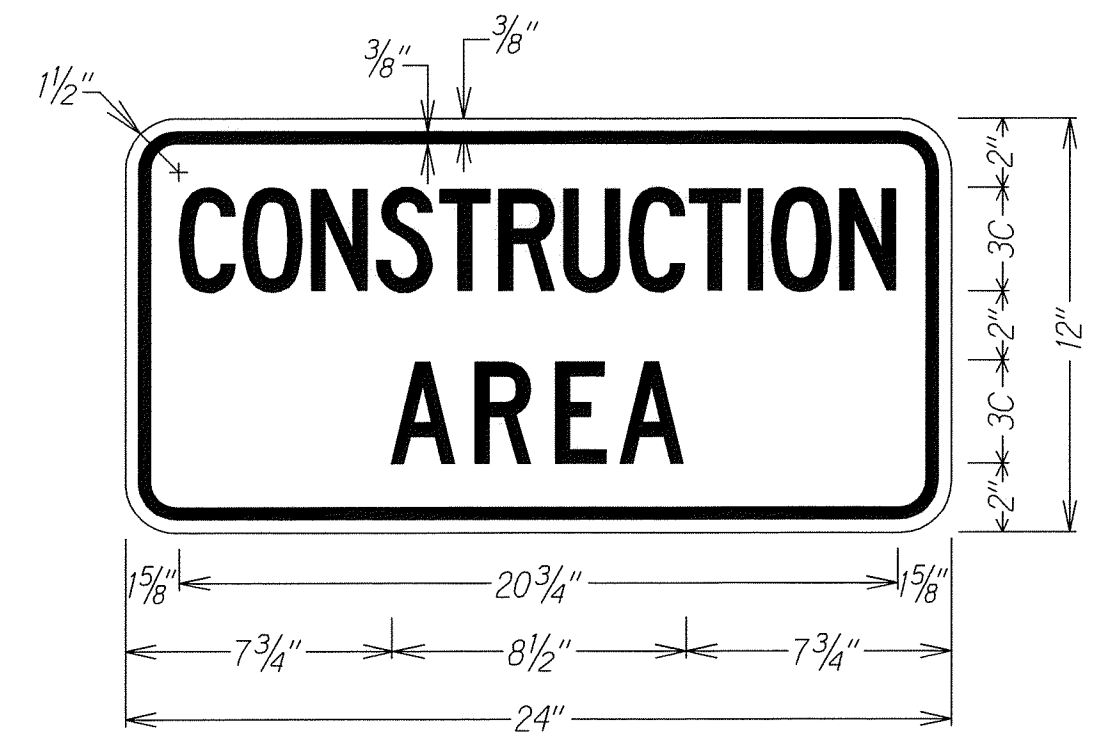
Work Zone Notes:

1. This Work Zone Sign Plan is intended for use on long-term stationary work zones/construction phases (3 days or more). All work zones or construction phases less than 3 days duration will use Traffic Control Plans shown in Section 645 of the Special Provisions.
2. All existing regulatory speed limit signs with posts within the work zone/project limits shall be removed and replaced with work zone speed limit sign assemblies (R2-1(25) and CW3-5(25) with "CONSTRUCTION AREA" and "\$250 FINE HRS 291C-104" Supplemental Signs).
3. Construction sign assemblies shall be installed on both the approaching and trailing ends of each work zone as shown on this plan.
4. Each construction warning sign shall have a minimum of two (2) Type II OM. Each work zone speed limit assembly shall have a minimum of one (1) Type II OM. Installation of each Type II OM shall be considered incidental to Item No. 645.0100 - Traffic Control.
5. Upon the completion of all physical work or as directed by the Engineer, all construction signs and work zone speed limit assemblies shall be removed. All speed limit signs and posts that were existing at the start of the project within the work zone/project limits shall be restored back to their original locations and configurations.
6. Placement of construction signs shall not obstruct the path of pedestrians and bicyclists.
7. The removal and restoration of existing regulatory speed limit signs with new posts along with the installation, maintenance and removal of work zone speed limit sign assemblies shall be considered incidental to Item No. 645.0100 - Traffic Control. Sign covers shall be commercially manufactured and HDOT approved. Sign covers shall not allow any portion of the sign being covered to be visible. If the sign has more than one side, cover shall completely cover each side. "Homemade" or "field made" covers shall not be used or accepted.

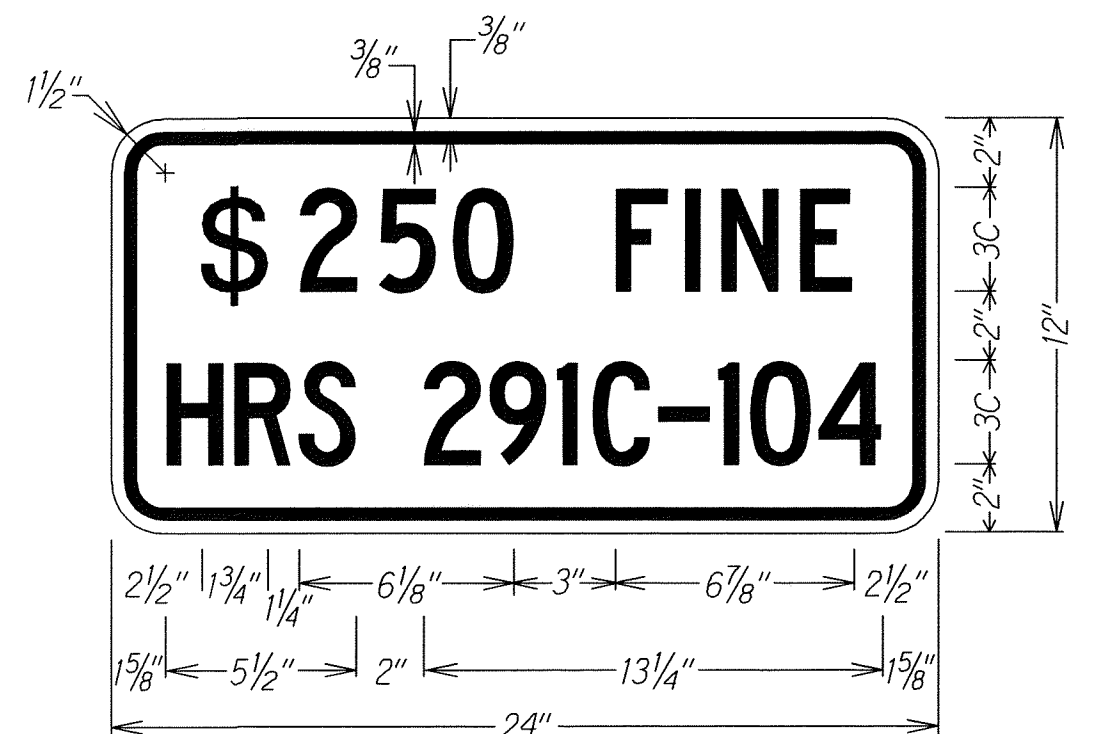
*Note:
 Legend: Black
 Background: Orange
 Speed Limit: Black on White

TYPICAL DETAIL FOR CONSTRUCTION SIGNS ON MULTILANE DIVIDED LOW SPEED HIGHWAY

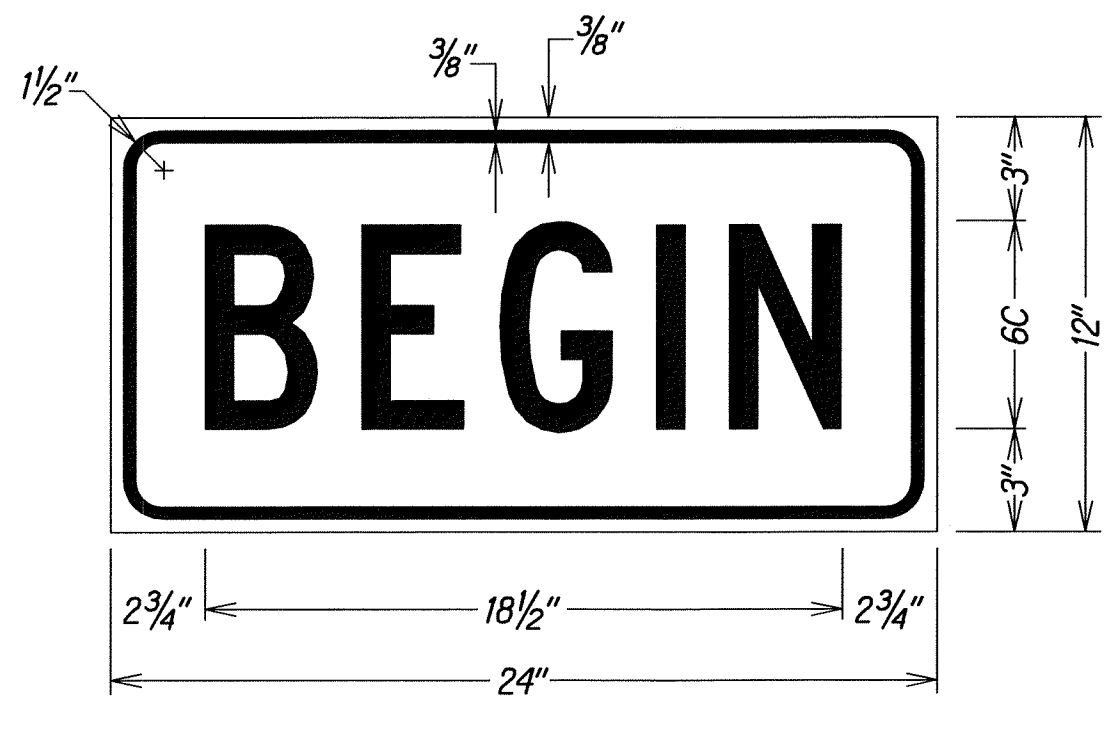
ORIGINAL PLAN	DATE
DESIGNED BY	
CHECKED BY	
DATE	
DESIGNED BY	
CHECKED BY	
DATE	



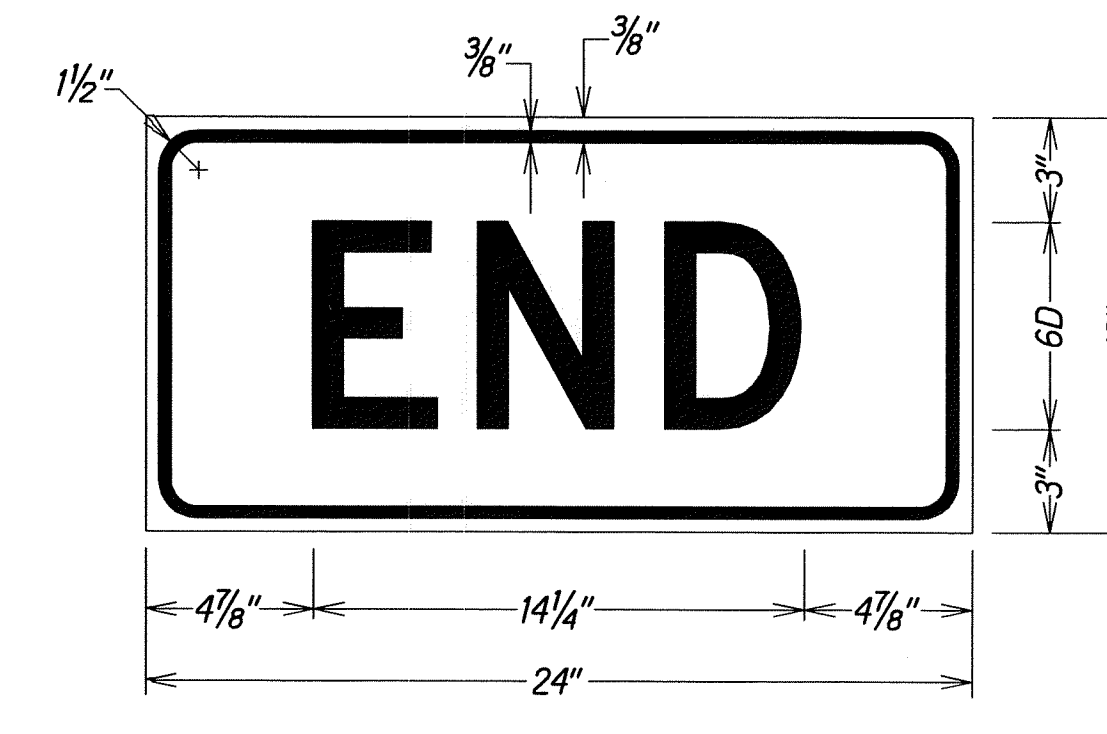
LEGEND: BLACK
 BACKGROUND: ORANGE



LEGEND: BLACK
 BACKGROUND: WHITE



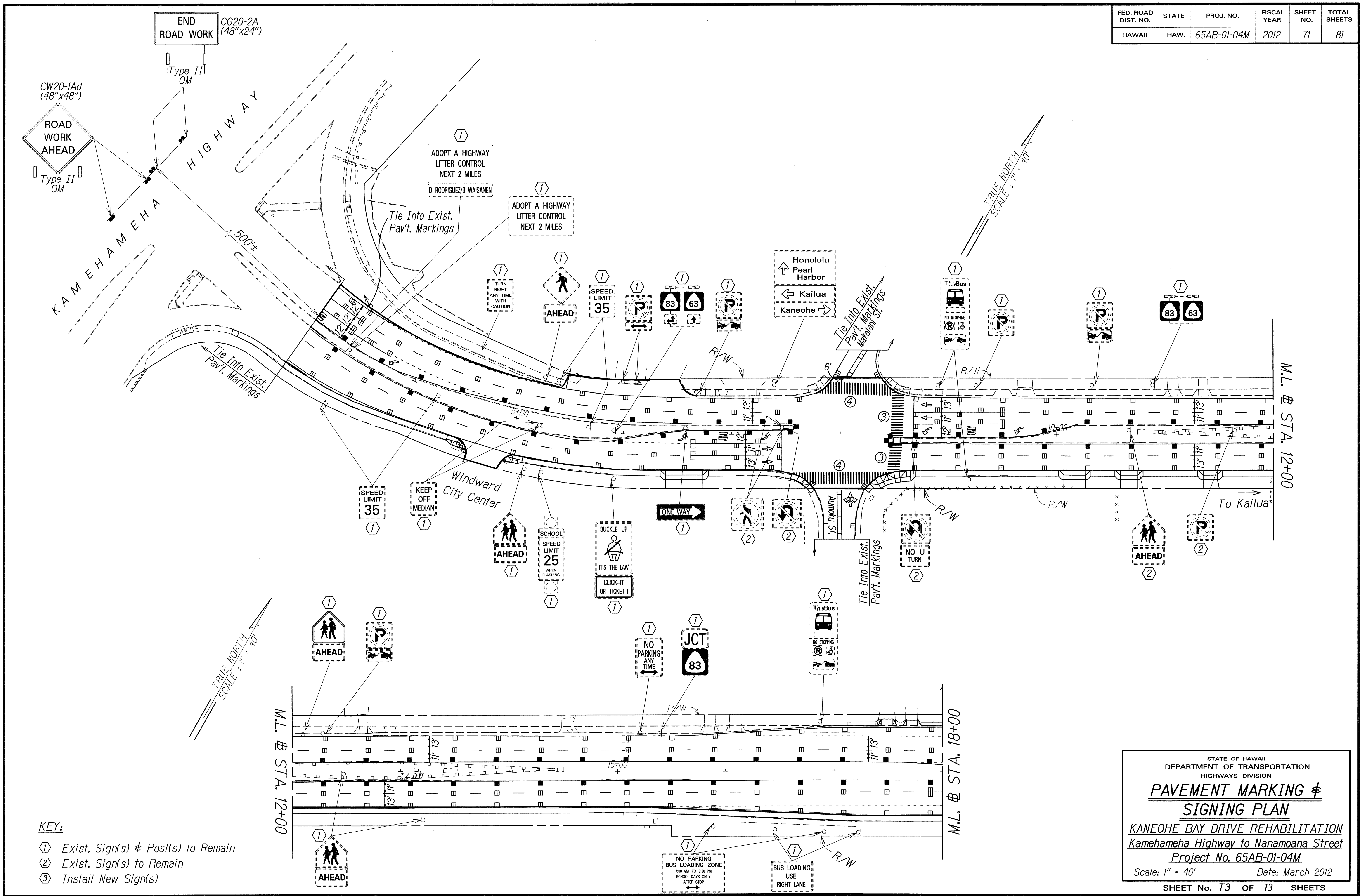
LEGEND: BLACK
 BACKGROUND: ORANGE



LEGEND: BLACK
 BACKGROUND: ORANGE

STATE OF HAWAII
 DEPARTMENT OF TRANSPORTATION
 HIGHWAYS DIVISION
LOW SPEED DIVIDED HIGHWAY
WORK ZONE SIGNING PLAN, NOTES&DETAILS
 KANEHOHE BAY DRIVE REHABILITATION
 Kamehameha Highway to Nanamoana Street
 Project No. 65AB-01-04M
 Scale: As Noted Date: March 2012
 SHEET No. T2 OF 13 SHEETS

FED. ROAD DIST. NO.	STATE	PROJ. NO.	FISCAL YEAR	SHEET NO.	TOTAL SHEETS
HAWAII	HAW.	65AB-01-04M	2012	71	81



- KEY:**
- ① Exist. Sign(s) & Post(s) to Remain
 - ② Exist. Sign(s) to Remain
 - ③ Install New Sign(s)

ORIGINAL PLAN	SURVEY PLOTTED BY	DATE
NOTE BOOK	DRAWN BY	
DESIGNED BY	QUANTITIES BY	
CHECKED BY		

STATE OF HAWAII
DEPARTMENT OF TRANSPORTATION
HIGHWAYS DIVISION

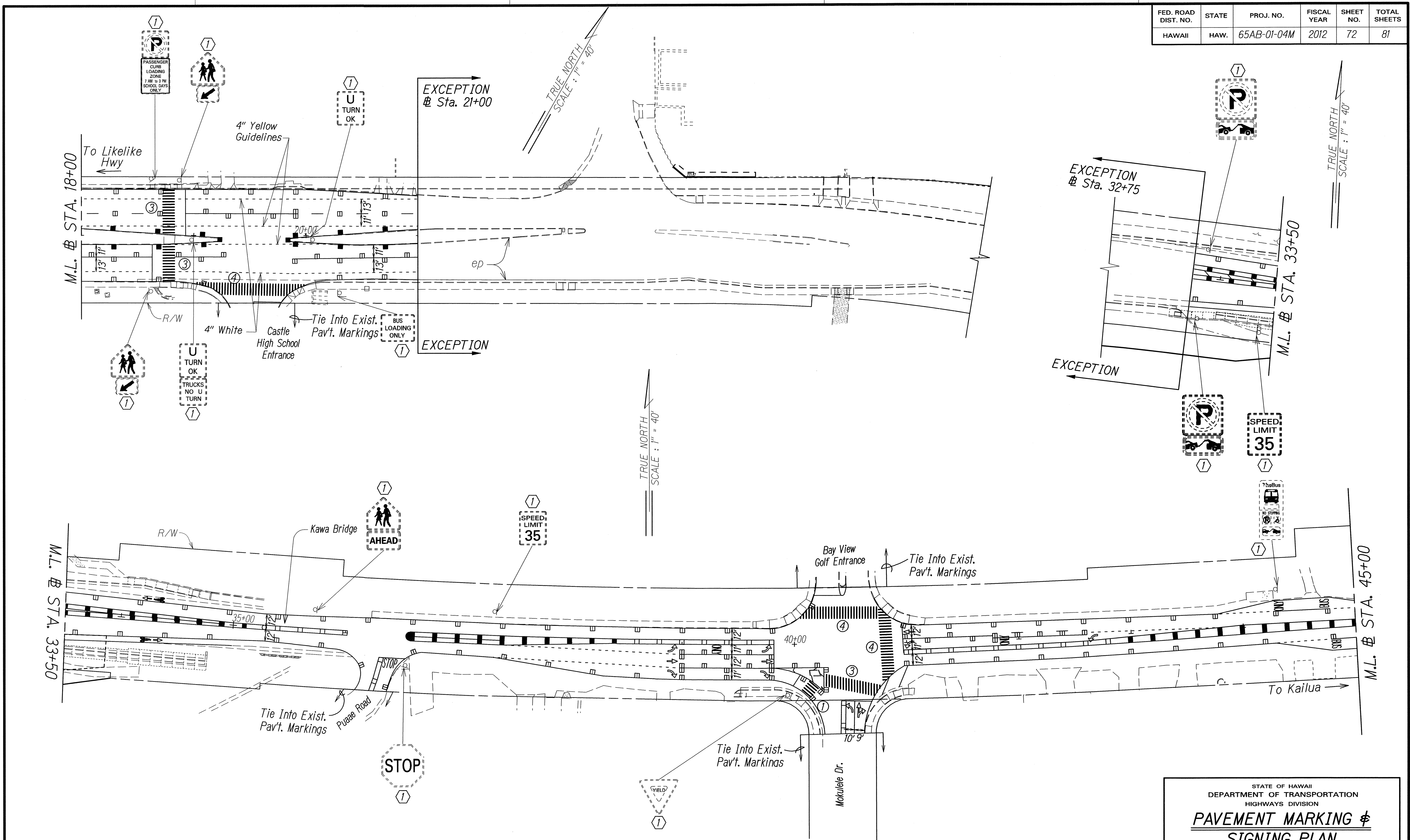
PAVEMENT MARKING & SIGNING PLAN

*KANEOHE BAY DRIVE REHABILITATION
Kamehameha Highway to Nanamoana Street
Project No. 65AB-01-04M*

Scale: 1" = 40' Date: March 2012

SHEET No. 73 OF 13 SHEETS

FED. ROAD DIST. NO.	STATE	PROJ. NO.	FISCAL YEAR	SHEET NO.	TOTAL SHEETS
HAWAII	HAW.	65AB-01-04M	2012	72	81



DATE
SURVEY PLOTTED BY
DRAWN BY
DESIGNED BY
QUANTITIES BY
CHECKED BY
ORIGINAL PLAN
NOTE BOOK
TABLE
CHECKED BY

- KEY:**
- ① Exist. Sign(s) & Post(s) to Remain
 - ② Exist. Sign(s) to Remain
 - ③ Install New Sign(s)

STATE OF HAWAII
DEPARTMENT OF TRANSPORTATION
HIGHWAYS DIVISION

**PAVEMENT MARKING &
SIGNING PLAN**

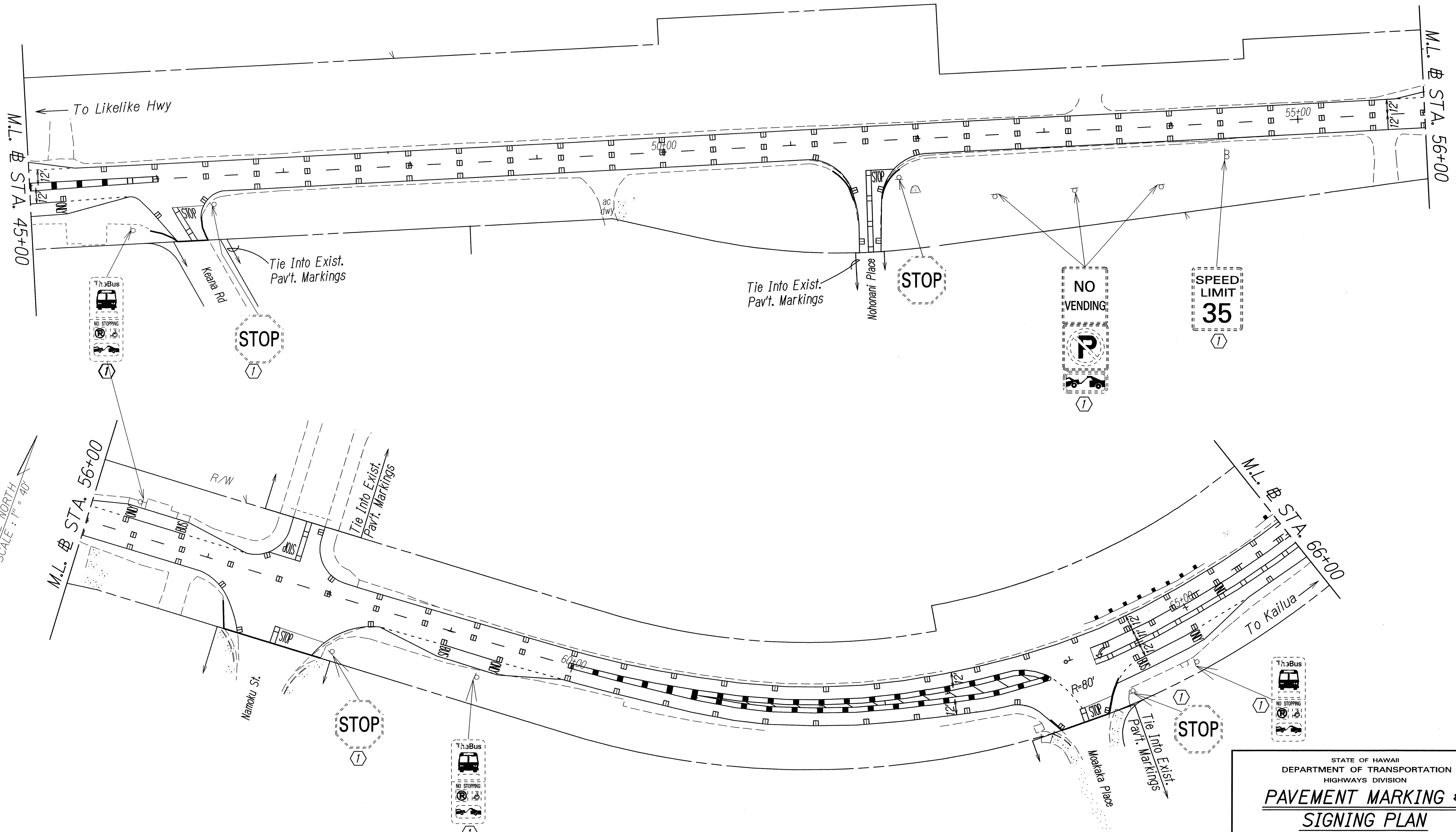
*Kaneohe Bay Drive Rehabilitation
Kamehameha Highway to Nanamoana Street
Project No. 65AB-01-04M*

Scale: 1" = 40' Date: March 2012

SHEET No. 74 OF 13 SHEETS

FED. ROAD DIST. NO.	STATE	PROJ. NO.	FISCAL YEAR	SHEET NO.	TOTAL SHEETS
HAWAII	HAW.	65AB-01-04M	2012	73	81

TRUE NORTH
SCALE: 1" = 40'



TRUE NORTH
SCALE: 1" = 40'

ORIGINAL PLAN	SURVEY PLOTTED BY	DATE
NOTE BOOK	DRAWN BY	
DESIGNED BY	DESIGNED BY	
QUANTITIES BY	QUANTITIES BY	
CHECKED BY	CHECKED BY	

- KEY:**
- ① Exist. Sign(s) & Post(s) to Remain
 - ② Exist. Sign(s) to Remain
 - ③ Install New Sign(s)

STATE OF HAWAII
DEPARTMENT OF TRANSPORTATION
HIGHWAYS DIVISION

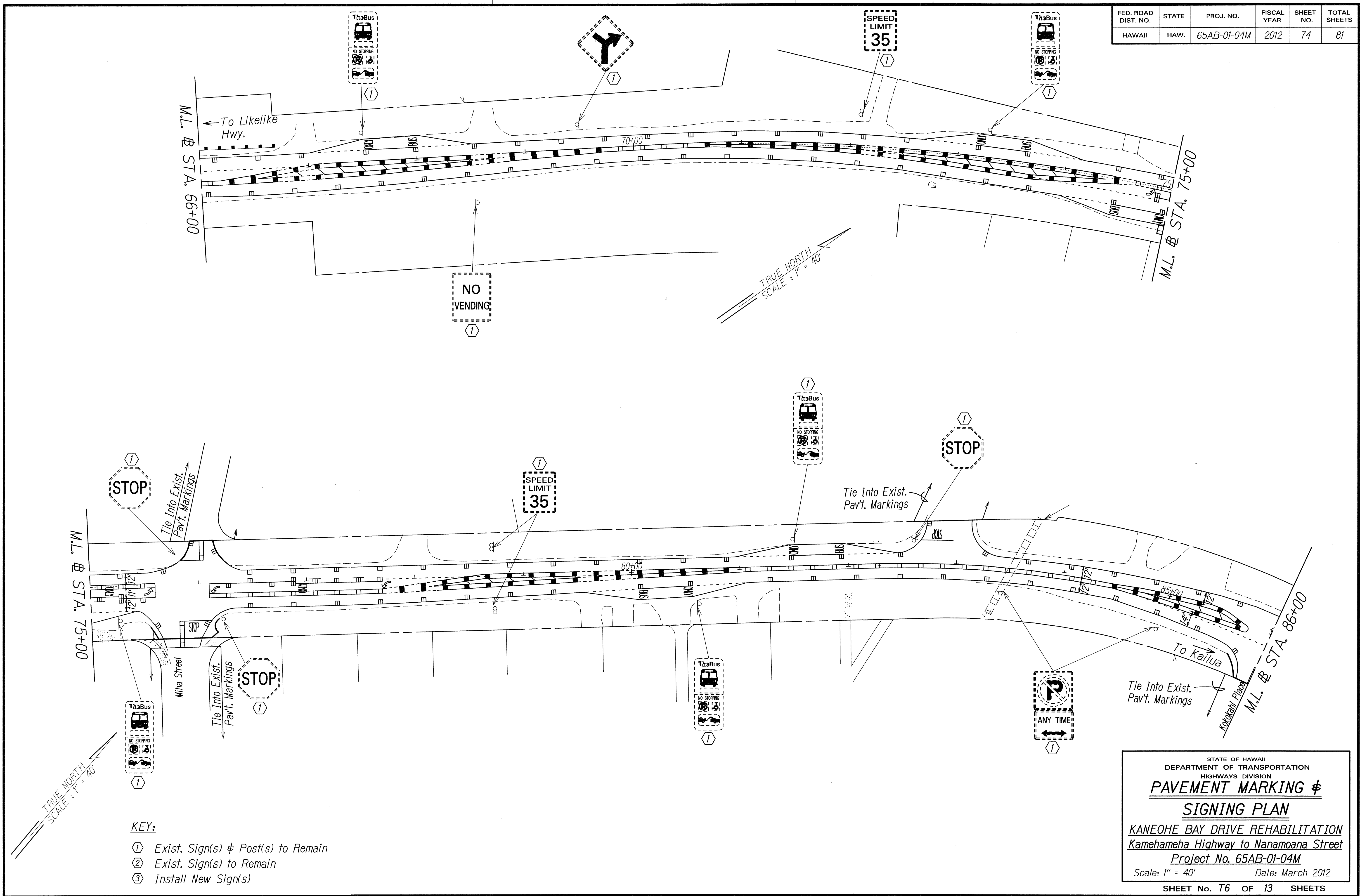
**PAVEMENT MARKING &
SIGNING PLAN**

**KANEHOHE BAY DRIVE REHABILITATION
Kamehameha Highway to Nanamoana Street
Project No. 65AB-01-04M**

Scale: 1" = 40' Date: March 2012

SHEET No. 75 OF 13 SHEETS

FED. ROAD DIST. NO.	STATE	PROJ. NO.	FISCAL YEAR	SHEET NO.	TOTAL SHEETS
HAWAII	HAW.	65AB-01-04M	2012	74	81



ORIGINAL PLAN	SURVEY PLOTTED BY	DATE
NOTE BOOK	DRAWN BY	
16/02/2012	DESIGNED BY	
3/2/2012	QUANTITIES BY	
	CHECKED BY	

- KEY:**
- ① Exist. Sign(s) & Post(s) to Remain
 - ② Exist. Sign(s) to Remain
 - ③ Install New Sign(s)

STATE OF HAWAII
DEPARTMENT OF TRANSPORTATION
HIGHWAYS DIVISION

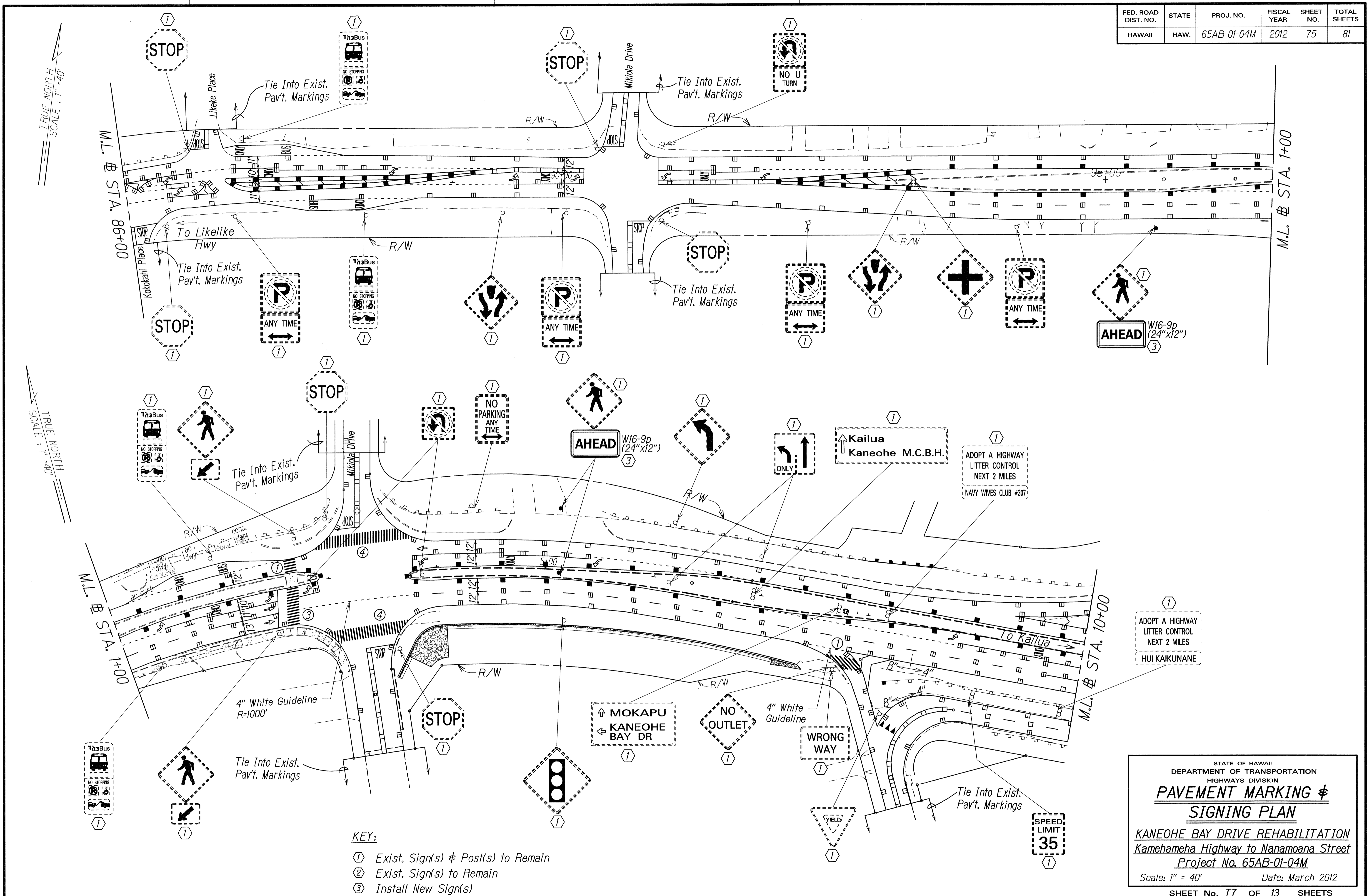
**PAVEMENT MARKING &
SIGNING PLAN**

**KANEIHE BAY DRIVE REHABILITATION
Kamehameha Highway to Nanamoana Street
Project No. 65AB-01-04M**

Scale: 1" = 40' Date: March 2012

SHEET No. 76 OF 13 SHEETS

FED. ROAD DIST. NO.	STATE	PROJ. NO.	FISCAL YEAR	SHEET NO.	TOTAL SHEETS
HAWAII	HAW.	65AB-01-04M	2012	75	81



TRUE NORTH
SCALE: 1" = 40'

TRUE NORTH
SCALE: 1" = 40'

DATE	_____
SURVEY PLOTTED BY	_____
DRAWN BY	_____
DESIGNED BY	_____
QUANTITIES BY	_____
CHECKED BY	_____
ORIGINAL PLAN	_____
NOTE BOOK	_____
TO/FRY	_____
NO. SIGN/DOS	_____

- KEY:**
- ① Exist. Sign(s) & Post(s) to Remain
 - ② Exist. Sign(s) to Remain
 - ③ Install New Sign(s)

STATE OF HAWAII
DEPARTMENT OF TRANSPORTATION
HIGHWAYS DIVISION

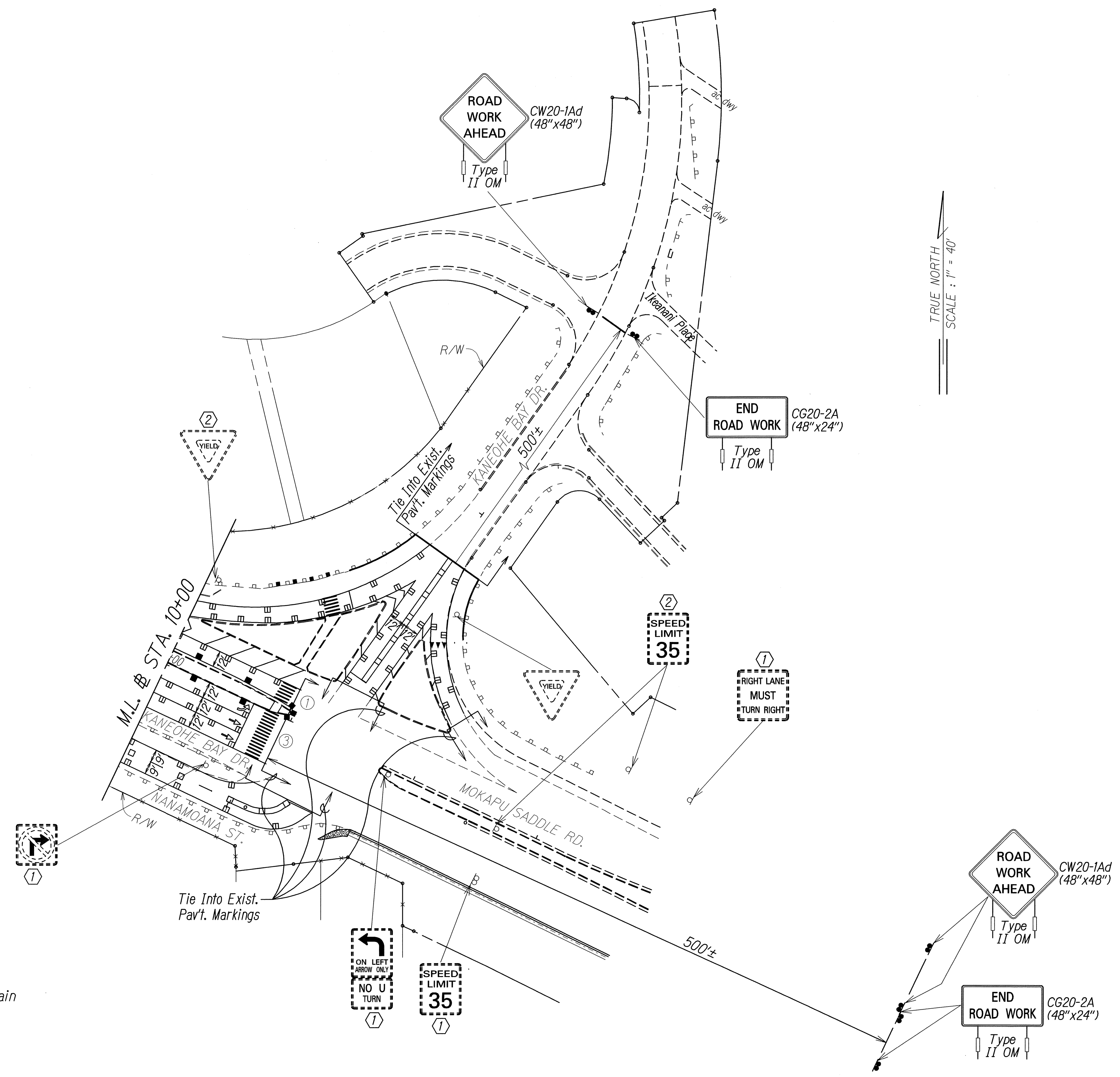
PAVEMENT MARKING & SIGNING PLAN

KANEHOE BAY DRIVE REHABILITATION
Kamehameha Highway to Nanamoana Street
Project No. 65AB-01-04M

Scale: 1" = 40' Date: March 2012

SHEET No. 77 OF 13 SHEETS

FED. ROAD DIST. NO.	STATE	PROJ. NO.	FISCAL YEAR	SHEET NO.	TOTAL SHEETS
HAWAII	HAW.	65AB-01-04M	2012	76	81



- KEY:**
- ① Exist. Sign(s) & Post(s) to Remain
 - ② Exist. Sign(s) to Remain
 - ③ Install New Sign(s)

ORIGINAL PLAN	DATE
SURVEY PLOTTED BY	
DRAWN BY	
DESIGNED BY	
NOTED BY	
QUANTITIES BY	
CHECKED BY	

STATE OF HAWAII
DEPARTMENT OF TRANSPORTATION
HIGHWAYS DIVISION

**PAVEMENT MARKING &
SIGNING PLAN**

KAMEHAMEHA BAY DRIVE REHABILITATION
Kamehameha Highway to Nanamoana Street
Project No. 65AB-01-04M

Scale: 1" = 40' Date: March 2012

SHEET No. 76 OF 13 SHEETS