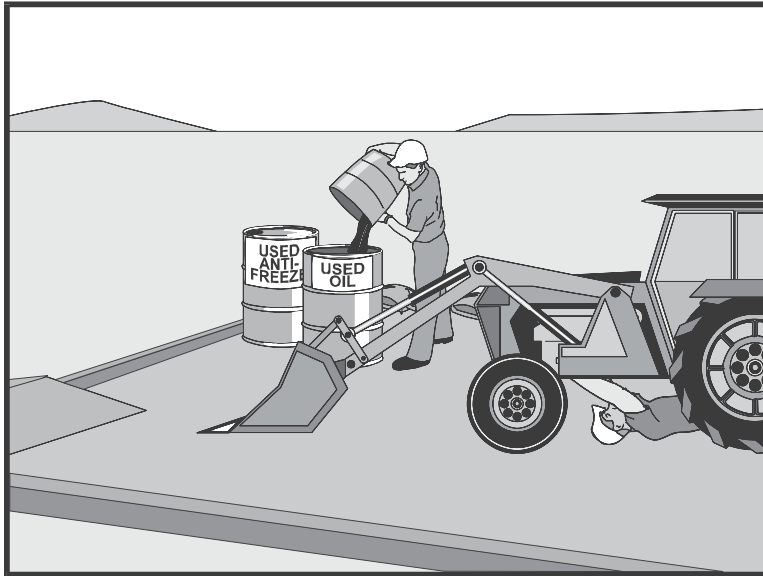

Vehicle and Equipment Maintenance

SM-12



Source: Caltrans Construction Site Best Management Practices Manual, 2003.

Description

Practices and procedures to prevent or reduce the discharge of pollutants from vehicular and equipment maintenance procedures into the storm drain system or adjacent water bodies.

Applications

Construction sites with on-site areas for storage and maintenance of vehicles and equipment.

Installation and Implementation Requirements

- Prevent excessive accumulation of oil and grease by keeping vehicles and equipment clean.
- Use off-site repair and maintenance facilities where practical.
- Designate a maintenance area away from drainage courses to prevent pollutants from entering the drainage system.
- Place drip pans or drop cloths under vehicles and equipment to absorb spills or leaks.
- Provide an ample supply of readily accessible spill cleanup materials.
- Use absorbent materials on small spills. Promptly remove and properly dispose of absorbent materials. Do not hose down or bury small spills.
- On-site vehicles and equipment shall be inspected regularly for leaks and all leaks shall be immediately repaired.
- Incoming vehicles and equipment shall be checked for leaks. Leaking vehicles and equipment shall not be allowed on-site.

Vehicle and Equipment Maintenance

SM-12

**Installation and
Implementation
Requirements
(Continued)**

- Segregate and recycle wastes from vehicle/equipment maintenance activities such as used oil or oil filters, greases, cleaning solutions, antifreeze, automotive batteries, and hydraulic and transmission fluids.
- Properly dispose of wastes generated by vehicle/equipment maintenance activities.
- Provide employee training on proper maintenance and spill cleanup practices and procedures.

Limitations

Off-site maintenance facility may not be easily accessible.

**Inspections and
Maintenance**

- Regularly inspect vehicle and maintenance areas.
- Ample supplies of spill cleanup materials shall be kept on-site.