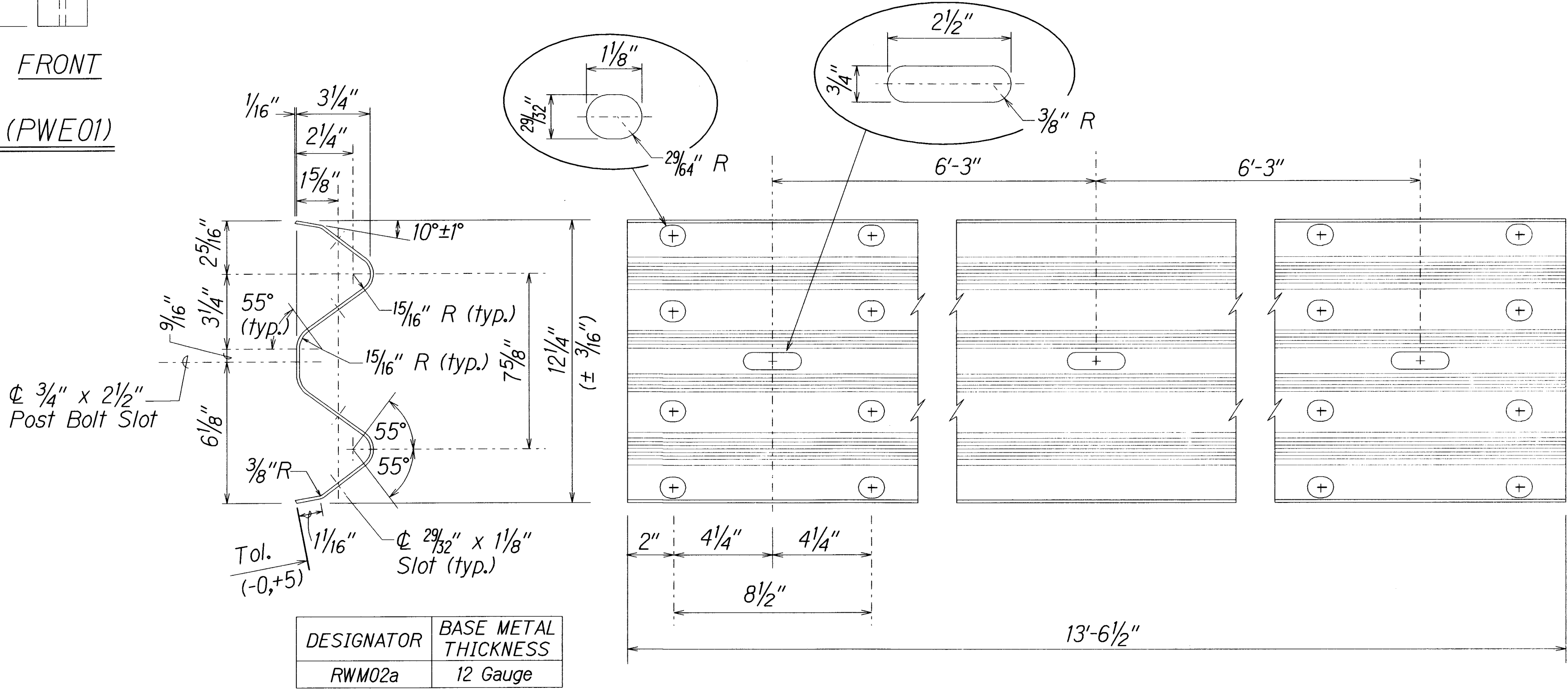
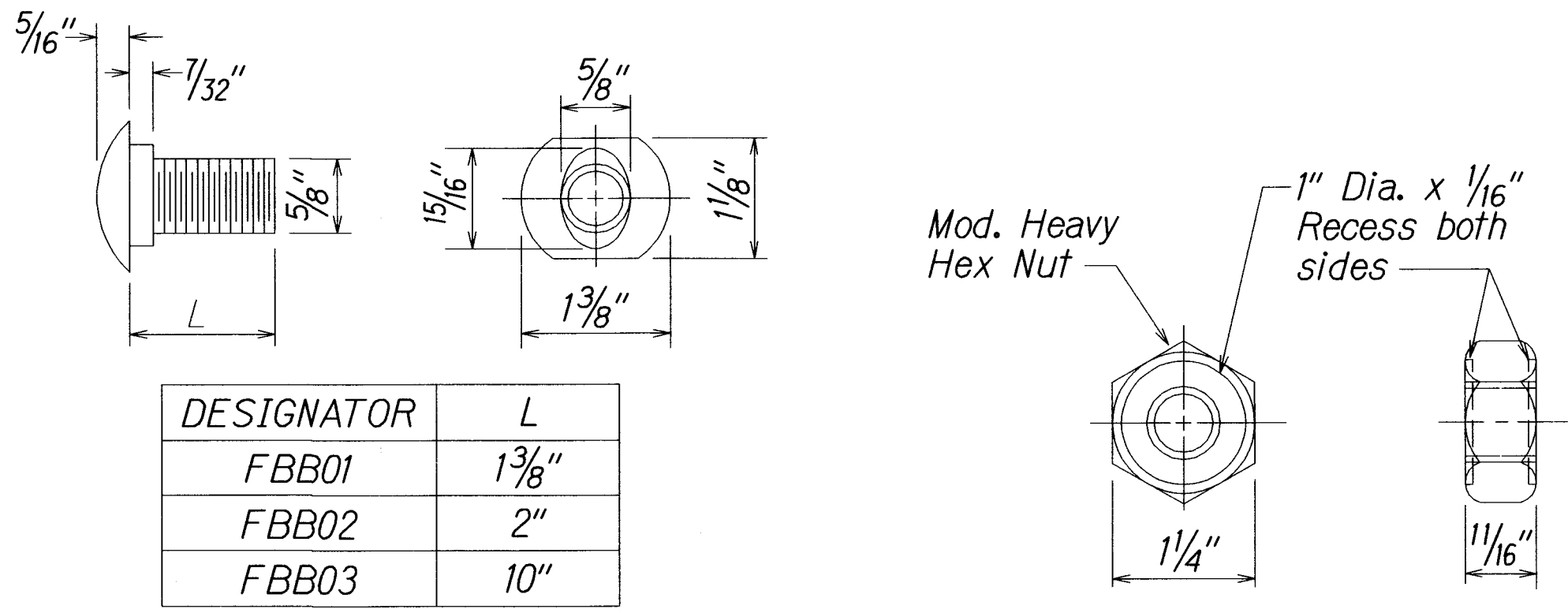
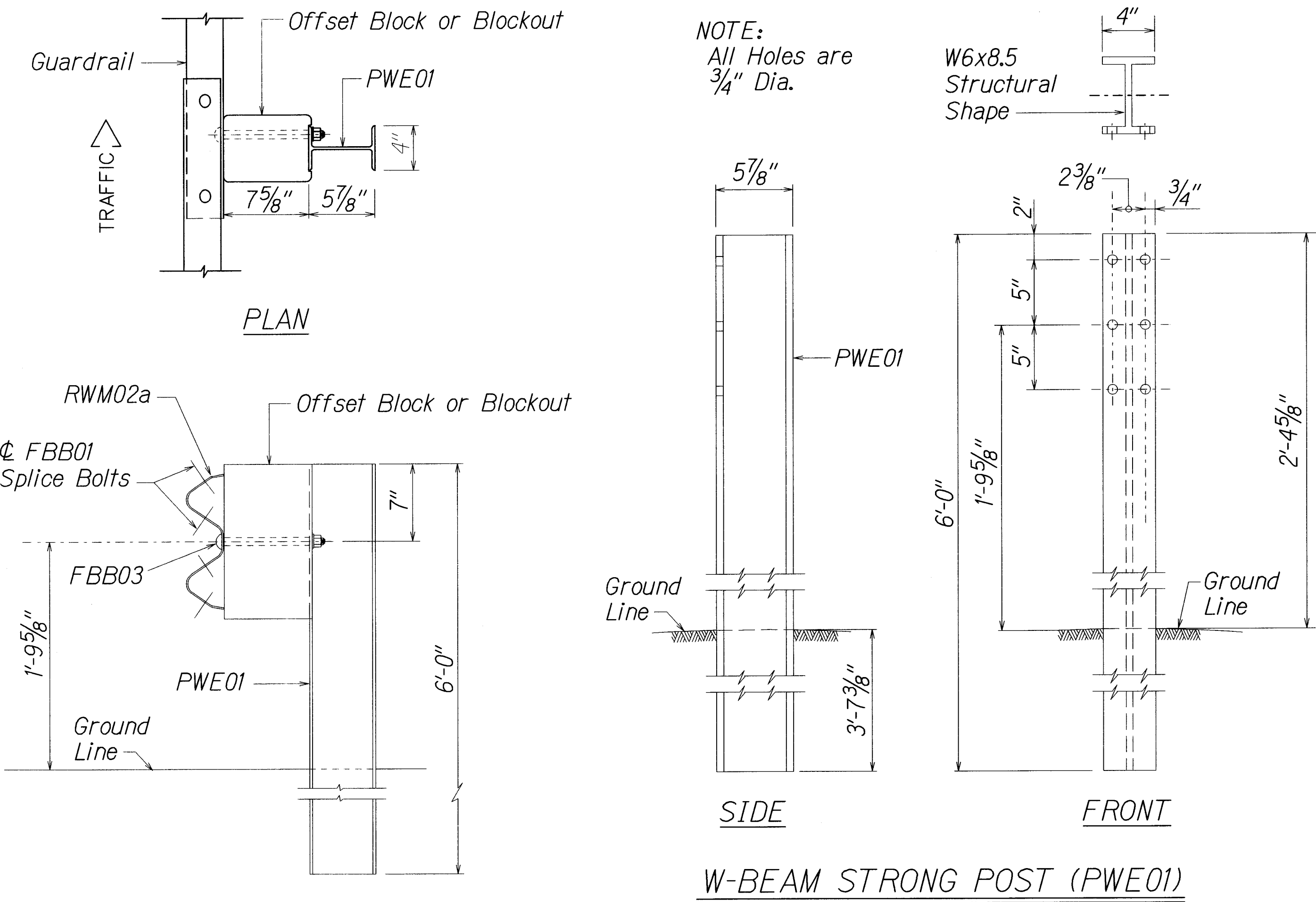


FED. ROAD DIST. NO.	STATE	FED. AID PROJ. NO.	FISCAL YEAR	SHEET NO.	TOTAL SHEETS
HAWAII	HAW.	STP-065-1(010)	2011	13	52



STATE OF HAWAII
DEPARTMENT OF TRANSPORTATION
HIGHWAYS DIVISION

STRONG POST W-BEAM GUARDRAIL

MOKAPU SADDLE ROAD and
MOKAPU BOULEVARD RESURFACING
Kapaa Quarry Road to North Kalaheo Avenue
Federal Aid Project No. STP-065-1(010)
Scale: NTS Date: April, 2011

SHEET No. 1 OF 1 SHEETS

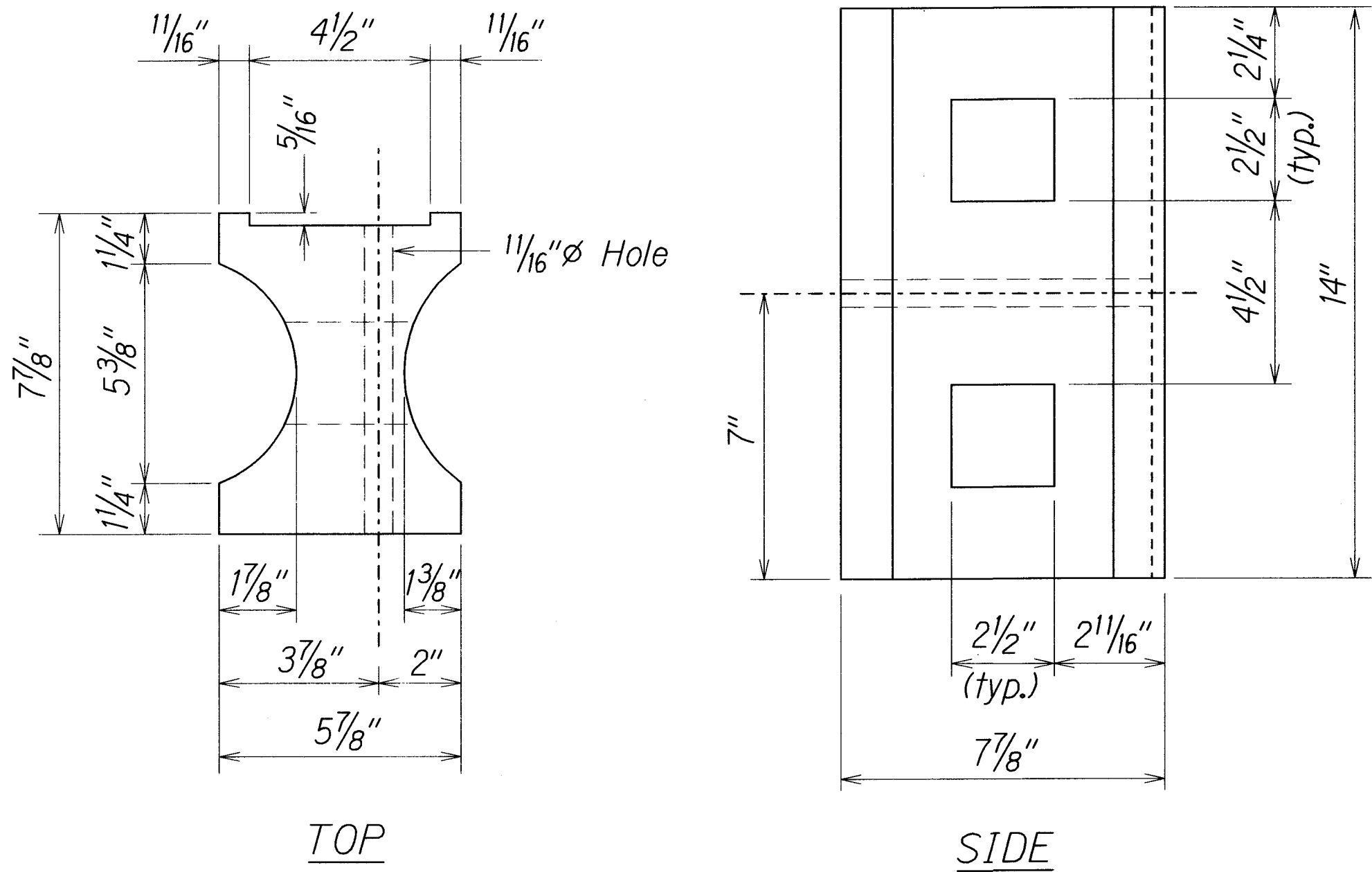
ORIGINAL PLAN	SURVEY PLOTTED BY	DATE
NOTE BOOK	DRAWN BY	
INTEGRITY	TRACED BY	
NO.	QUANTITIES BY	
	CHECKED BY	

(Standard plan TE-50 r03/06/87)

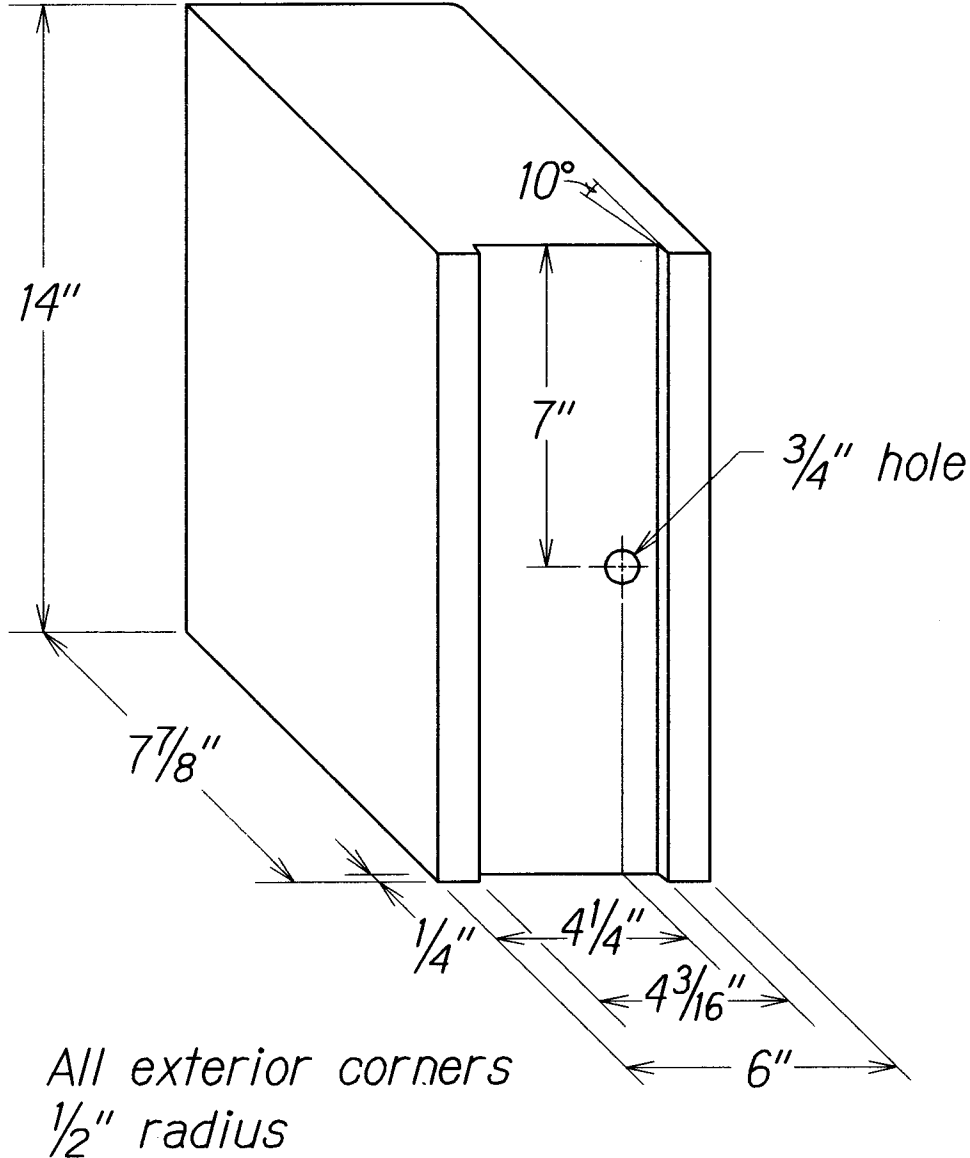
FED. ROAD DIST. NO.	STATE	FED. AID PROJ. NO.	FISCAL YEAR	SHEET NO.	TOTAL SHEETS
HAWAII	HAW.	STP-065-1(010)	2011	14	52

GENERAL NOTES

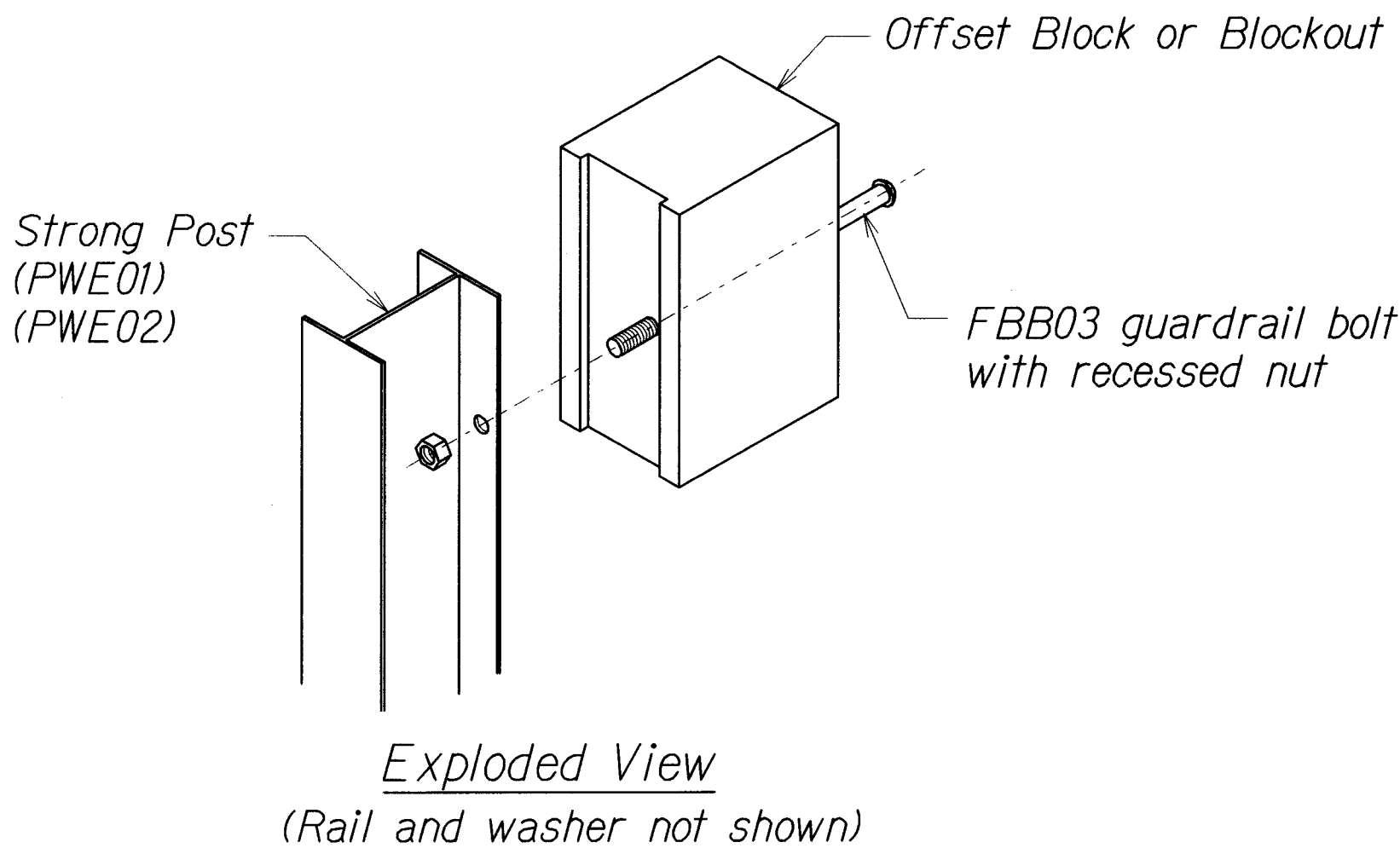
1. All hardware, posts and fasteners shall be hot-dip zinc coated galvanized after fabrication. No punching, drilling or cutting will be permitted after galvanizing.
2. Where conditions require, special post lengths in increments of 6 inches may be specified.
3. All fasteners, posts, and rail elements (i.e. FBB03, PWE01, RWM02b, etc.) shall conform to the latest edition and amendments of "A Guide to Standardized Highway Barrier Rail Hardware", a report prepared and approved by the AASHTO-AGC-ARTBA Joint Cooperative Committee, Subcommittee On New Highway Materials, Task Force 13 Report. Dimensions of fastners, posts and rail elements have been converted from metric units into their present form.
4. The Recycled Plastic Block or Offset Block shall be approved by the State.
5. All new guardrail systems (system consists of total length of guardrail including both end treatments) shall include the Additional Paved Area.
6. After the guardrail posts are installed in the paved area, the Contractor shall fill/seal around each guardrail post and all cracks in the paved area caused during the guardrail post installation. If required by the inspector/engineer, the Contractor shall tamper the paved area around the guardrail post prior to filling/sealing. All costs associated with this work shall not be paid for separately, but shall be considered incidental to the various guardrail items.
7. When standards for the fill slope area cannot be met, a site specific, engineer approved design may be used.
8. New A.C. pavement at guardrails shall extend 6 feet longitudinally beyond terminal ends.
9. Reflector Markers (RM-5) mounted on guardrails shall be spaced every 25 feet. RM-5's shall not be installed on Terminal Sections. Furnishing and installing of each RM-5 shall be considered incidental to the adjacent guardrail system.



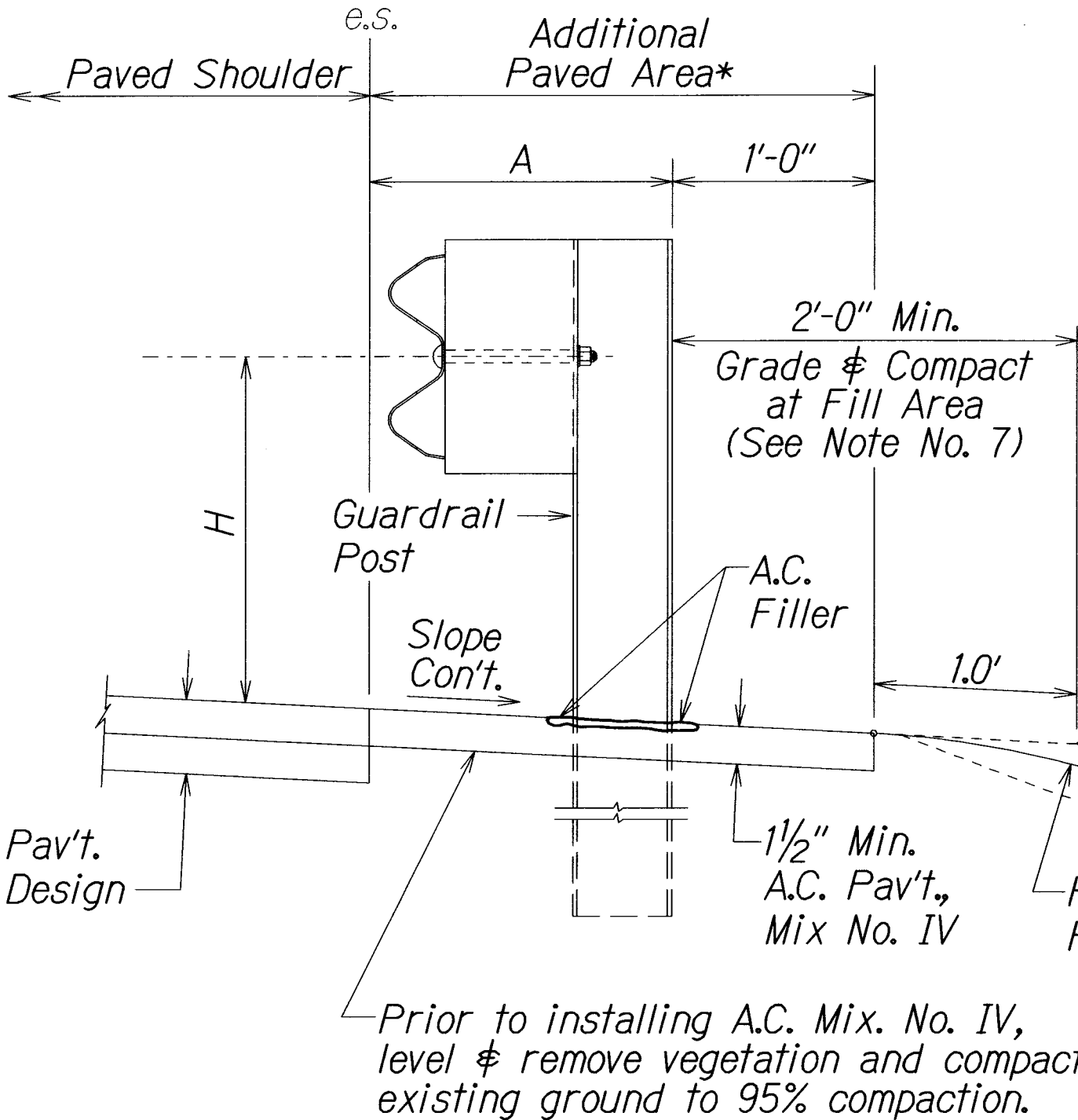
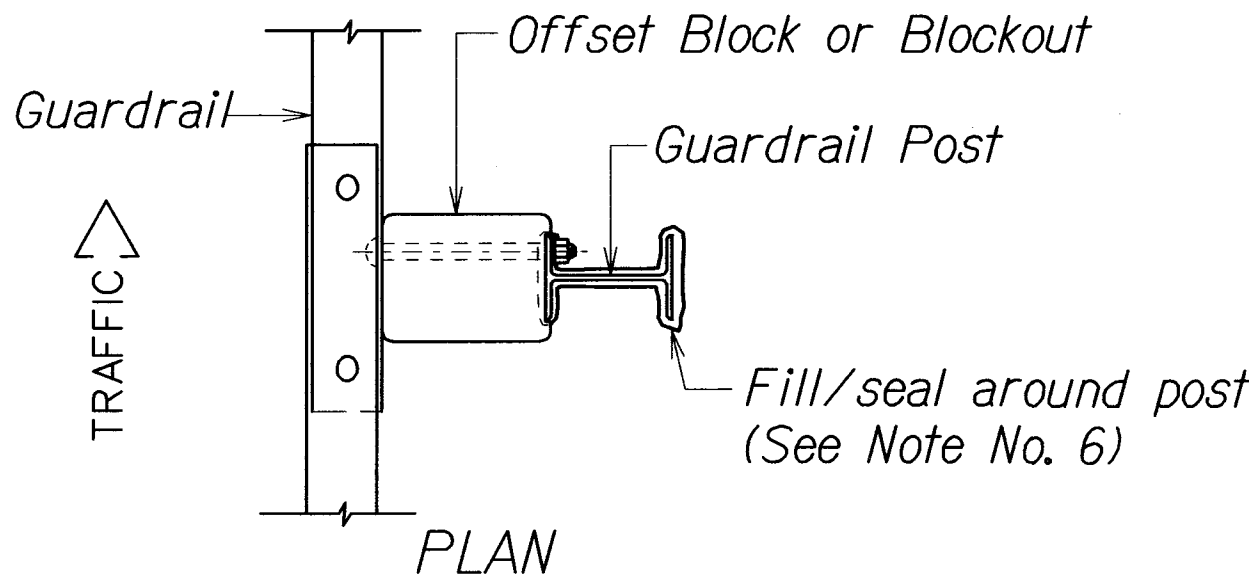
RECYCLED PLASTIC BLOCKOUT (TYPE I)



RECYCLED POLYETHYLENE OFFSET BLOCK (TYPE II)



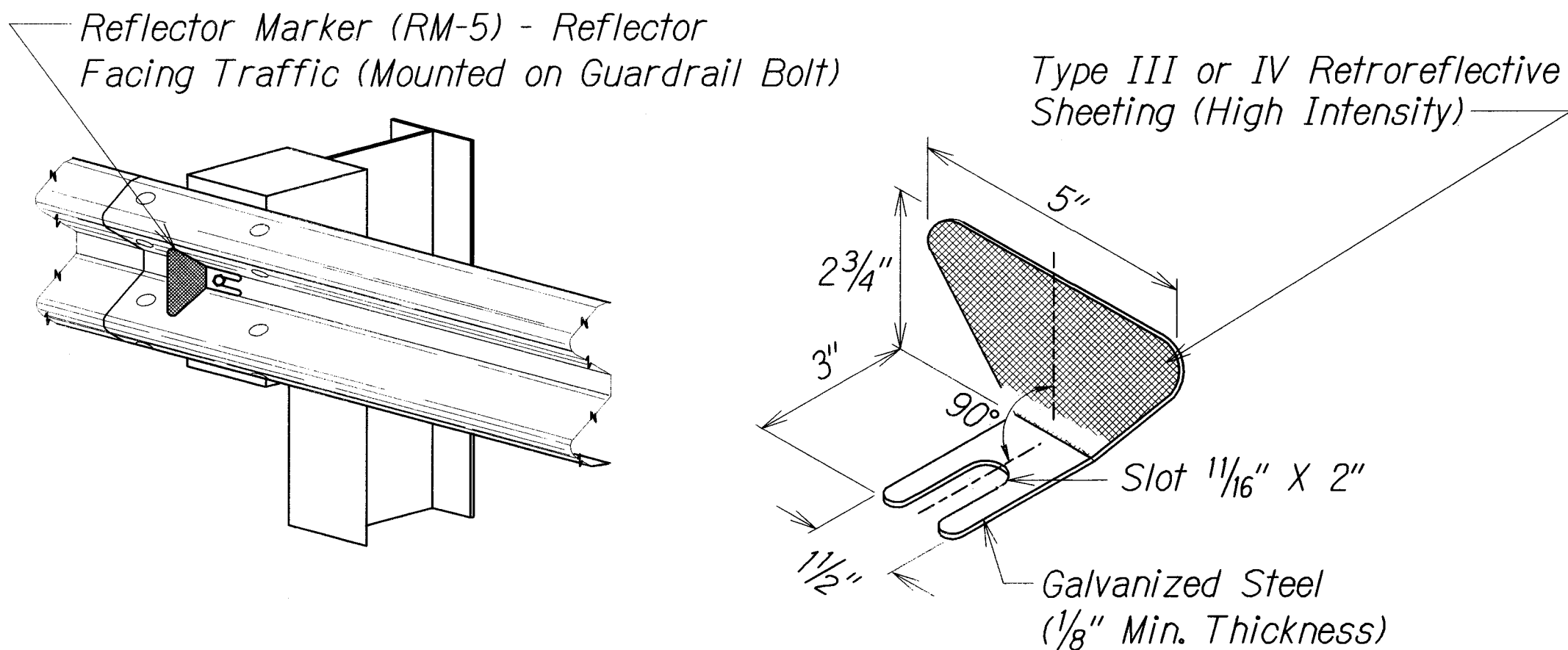
STEEL POST AND BLOCK DETAIL



ELEVATION

TYPICAL GUARDRAIL INSTALLATION

GUARDRAIL TYPE	DIMENSION	
	H	A
Strong Post W-Beam	1'-9 5/8"	1'-6"
Strong Post Rubrail (W-Beam)	2'-0"	1'-6"
Modified or Strong Post Thrie Beam	2'-0"	2'-0"



REFLECTOR MARKER (RM-5) DETAIL AND TYPICAL INSTALLATION

STATE OF HAWAII

DEPARTMENT OF TRANSPORTATION

HIGHWAYS DIVISION

GUARDRAIL DETAILS & NOTES

MOKAPU SADDLE ROAD and

MOKAPU BOULEVARD RESURFACING

Kapaa Quarry Road to North Kalaheo Avenue

Federal Aid Project No. STP-065-1(010)

Scale: NTS

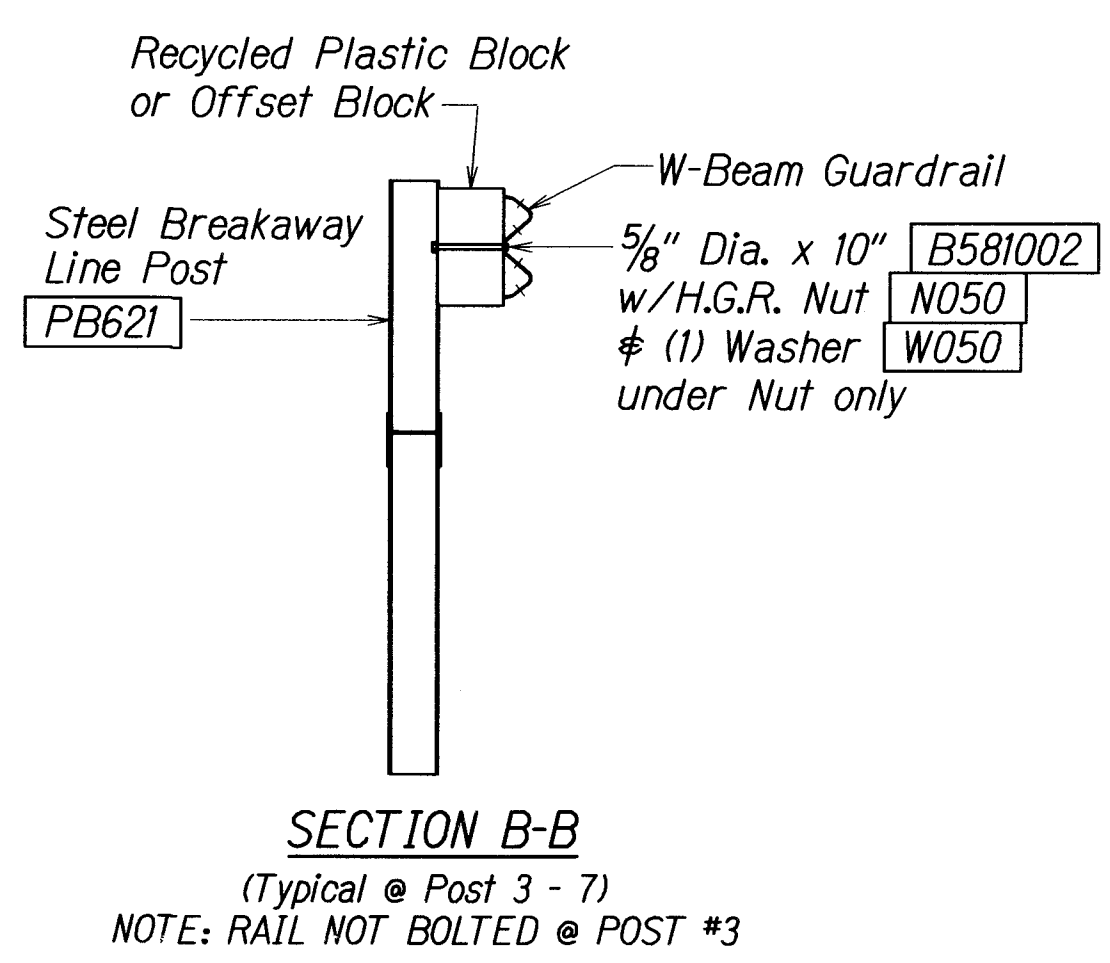
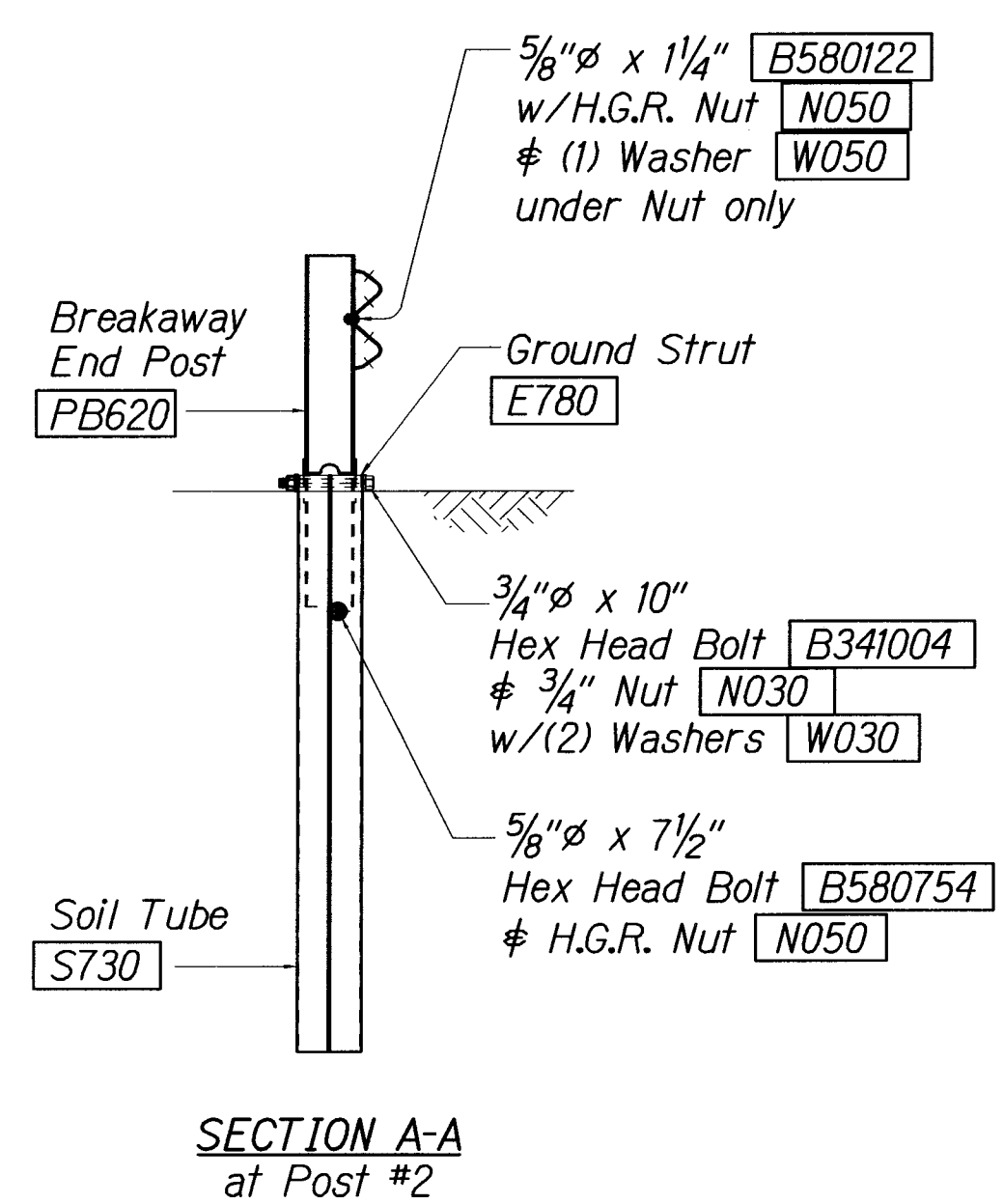
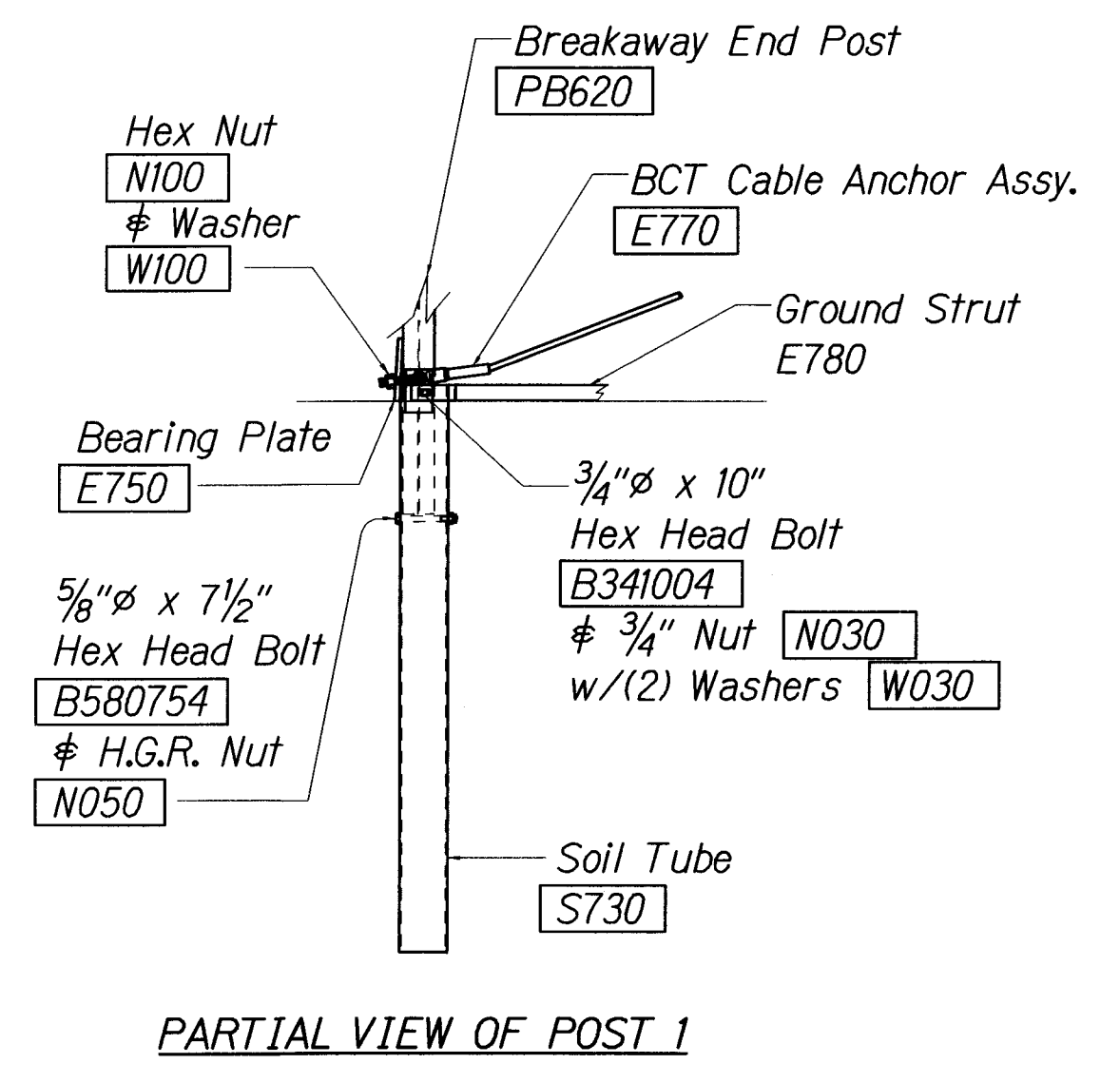
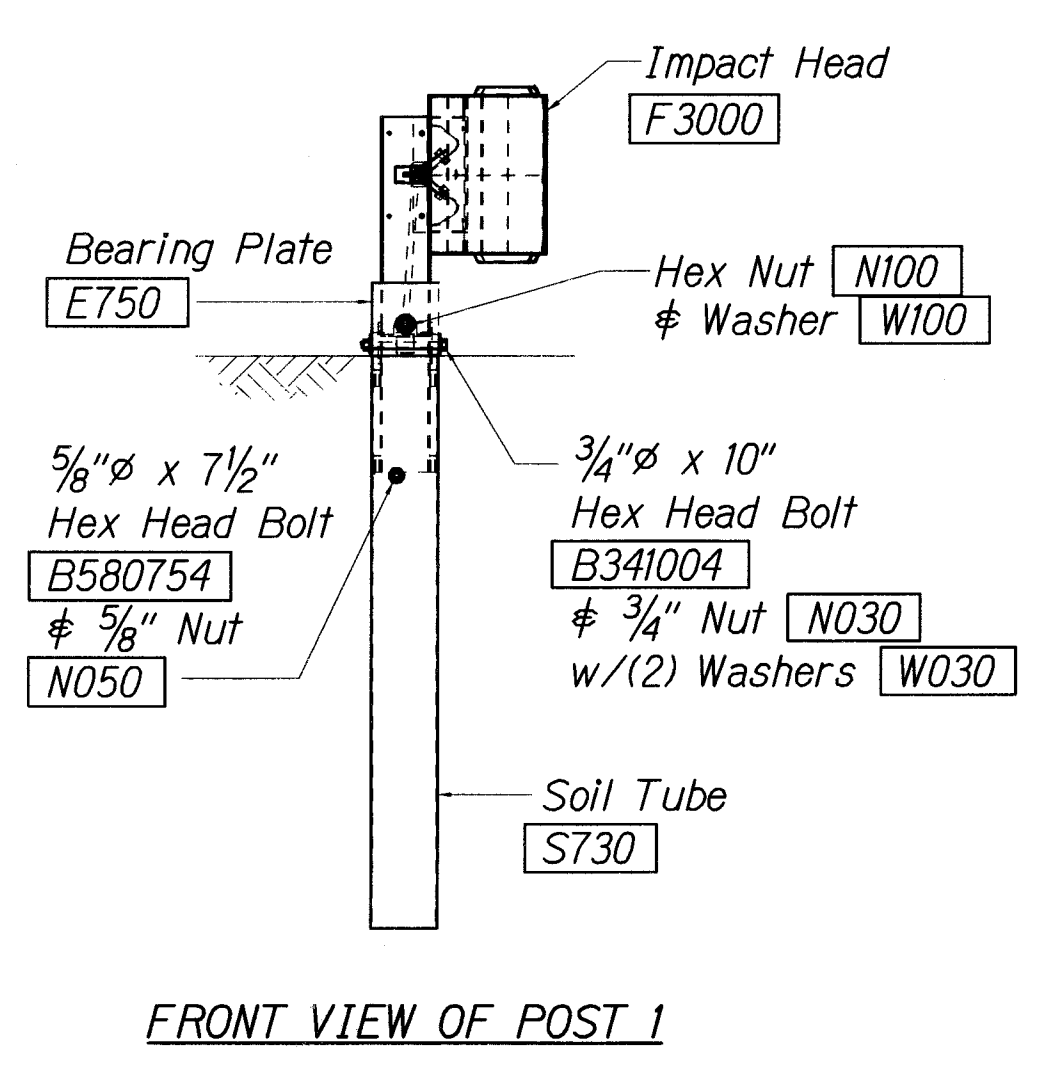
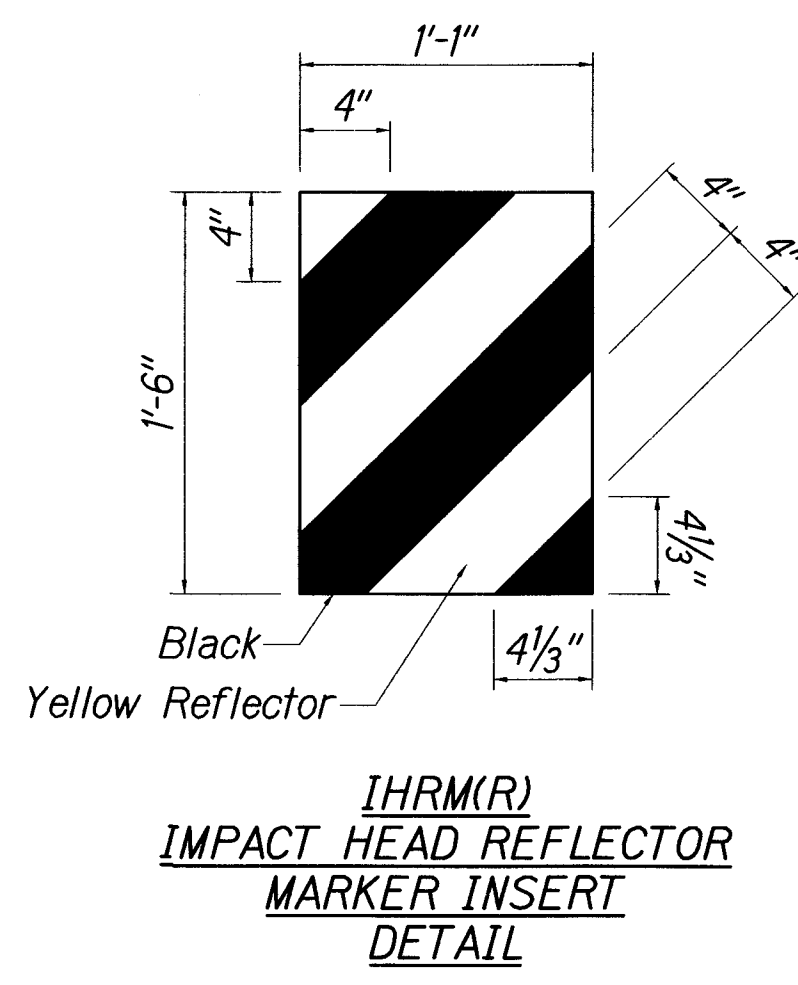
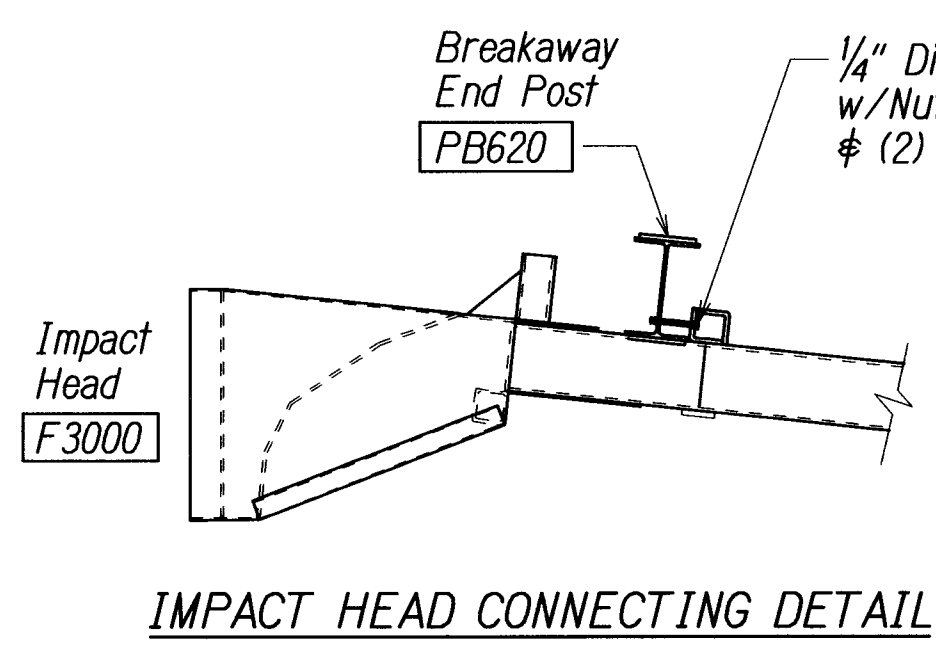
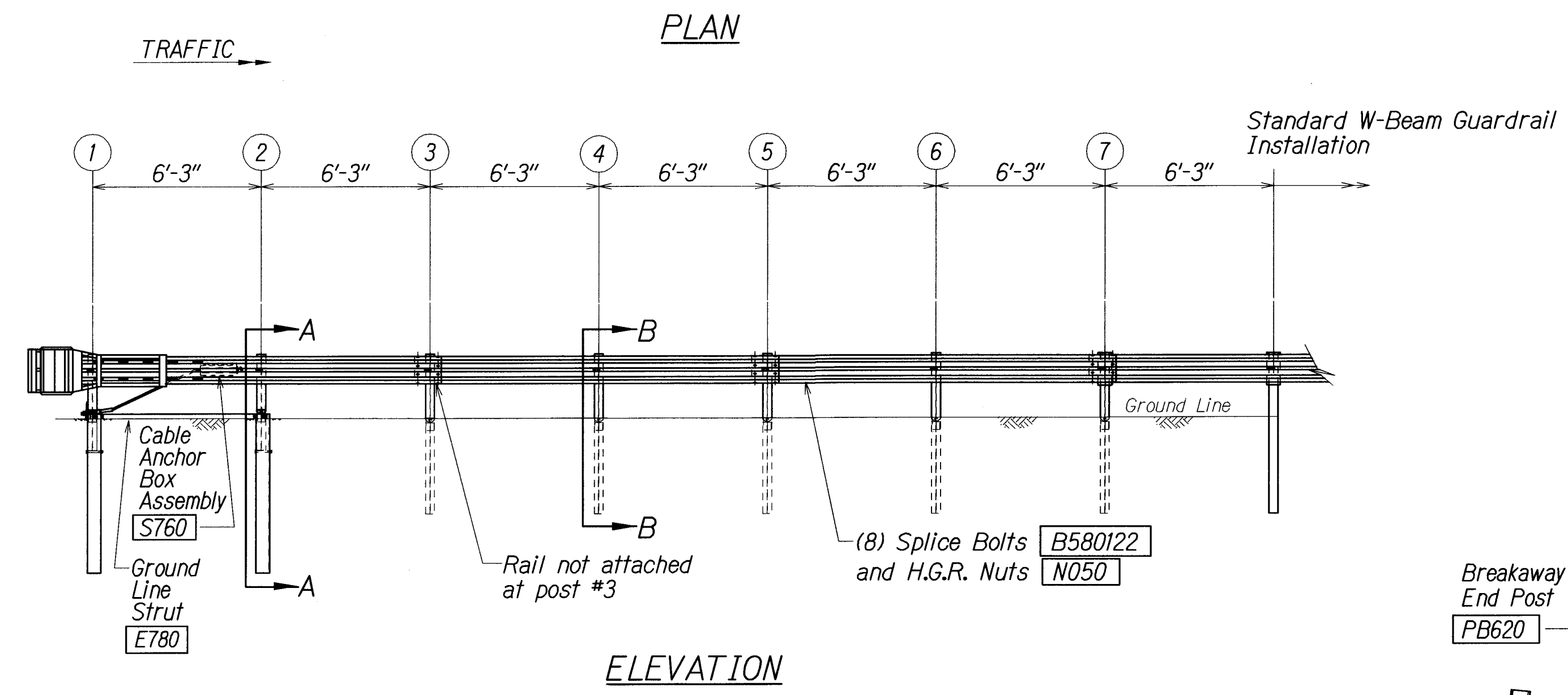
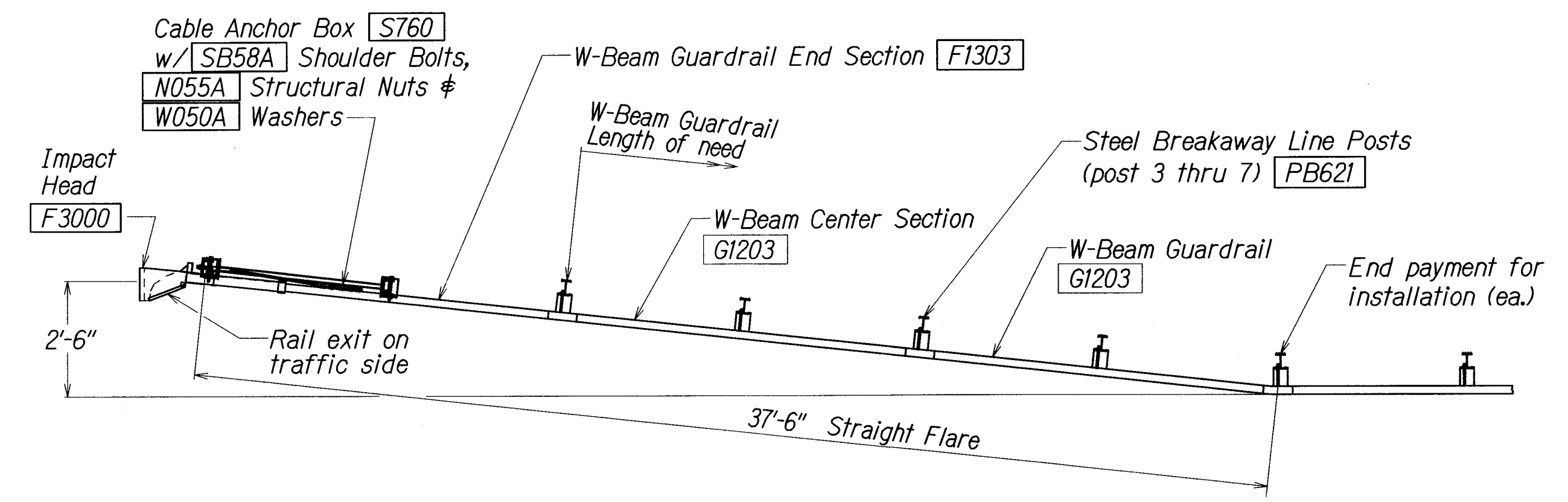
Date: April, 2011

SHEET No. 1 OF 1 SHEETS

SURVEY PLOTTED BY	DATE
DRAWN BY	
TRACED BY	
NOTED BY	
QUANTITIES BY	
CHECKED BY	
ORIGINAL PLAN	
NOTE BOOK	
FILED BY	
DATE	

Standard Plan TE-50 r09/01/00

FED. ROAD DIST. NO.	STATE	FED. AID PROJ. NO.	FISCAL YEAR	SHEET NO.	TOTAL SHEETS
HAWAII	HAW.	STP-065-1(010)	2011	15	52



ITEM NO.	QTY.	BILL OF MATERIALS
F3000	1	IMPACT HEAD
F1303	1	W-BEAM GUARDRAIL END SECTION, 12 GA.
G1203	2	W-BEAM GUARDRAIL, 12 GA.
S730	2	*FOUNDATION SOIL TUBE, 6" x 8" x 72"
E750	1	BEARING PLATE
S760	1	CABLE ANCHOR BOX
E770	1	BCT CABLE ANCHOR ASSEMBLY
E780	1	GROUND STRUT
PB620	2	STEEL BREAKAWAY END POST
PB621	5	STEEL BREAKAWAY LINE POST
	5	RECYCLED PLASTIC BLOCKOUT OR OFFSET BLOCK
	1	IMPACT HEAD REFLECTOR MARKER - IHRM(R) OR (L)
HARDWARE		
B580122	25	5/8" Dia. x 1 1/4" SPLICE BOLT, POST #2
B580754	2	5/8" Dia. x 7 1/2" HEX BOLT
B341004	2	3/4" Dia. x 10" HEX BOLT
B581002	5	5/8" Dia. x 10" H.G.R. BOLT (POST 3 THRU 7)
N050	32	5/8" Dia. H.G.R. NUT (SPLICE 24, SOIL TUBES 2, POST 2 THRU 7, 6)
N030	2	3/4" Dia. HEX NUT
W050	6	H.G.R. WASHER
W030	4	3/4" ID WASHER
N100	2	1" ANCHOR CABLE HEX NUT
W100	2	1" ANCHOR CABLE WASHER
B140404	2	1/4" x 4" HEX BOLT
N014	2	1/4" HEX NUT
W014	4	1/4" WASHER
SB58A	8	CABLE ANCHOR BOX SHOULDER BOLT
N055A	8	1/2" A325 STRUCTURAL NUT
W050A	16	1 1/16" OD x 9/16" ID A325 STR. WASHER

Foundation Tube Options For Posts 1 & 2
 *6'-0" Split Foundation Tubes S730
 *6'-0" Solid Foundation Tubes E731
 *5'-0" Foundation Tubes S735 W/Soil Plates SP600
 *4'-6" Foundation Tubes E735 W/Soil Plates SP600

STATE OF HAWAII
 DEPARTMENT OF TRANSPORTATION
 HIGHWAYS DIVISION
FLEAT-350
FLARED ENERGY ABSORBING TERMINAL
 MOKAPU SADDLE ROAD and
 MOKAPU BOULEVARD RESURFACING
 Kapaa Quarry Road to North Kalaheo Avenue
 Federal Aid Project No. STP-065-1(010)
 Not to Scale Date: April, 2011
 SHEET No. 1 OF 1 SHEETS

ORIGINAL PLAN
 SURVEY PLOTTED BY
 DRAWN BY
 DESIGNED BY
 CHECKED BY
 DATE

(standard plan TE-61 r11/03/89 & TE-62 r09/01/87)