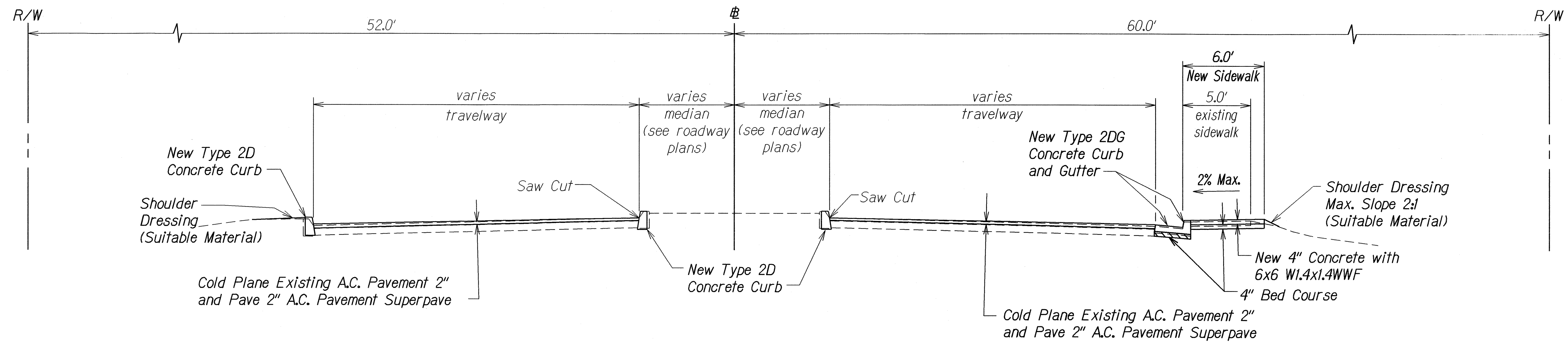
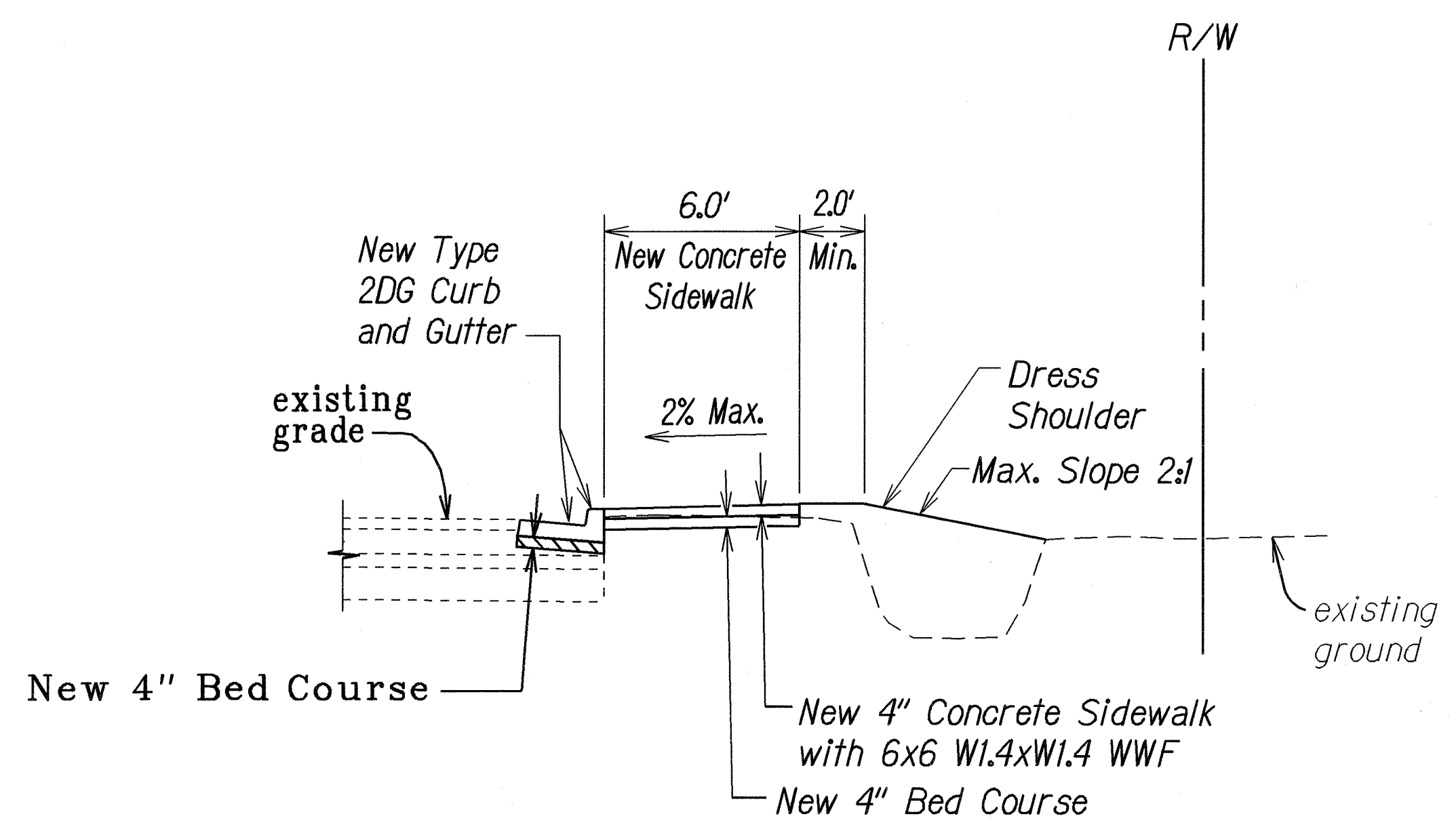


FED. ROAD DIST. NO.	STATE	FED. AID PROJ. NO.	FISCAL YEAR	SHEET NO.	TOTAL SHEETS
HAWAII	HAW.	STP-065-1(9)	2003	10	114

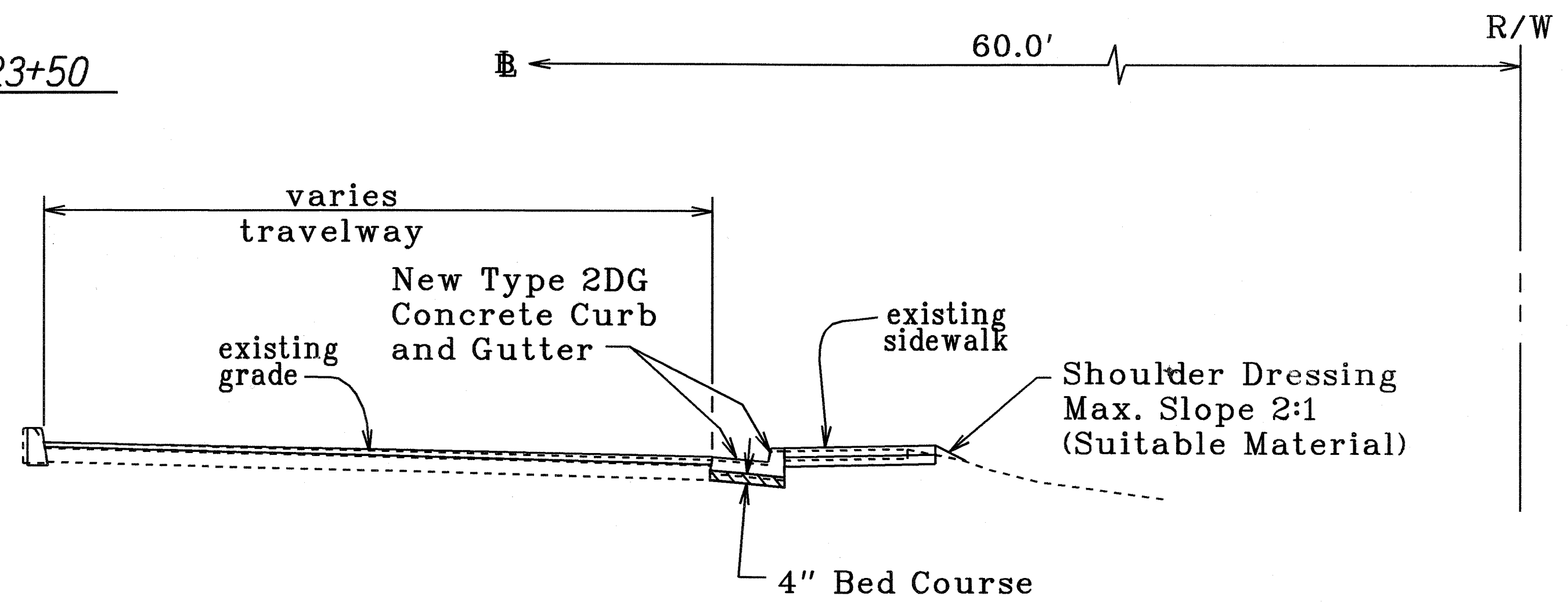


TYPICAL SECTION
Sta. 21+00 to Sta. 23+50
Scale: 1/4"=1'-0"



PARTIAL TYPICAL SECTION
Sta. 18+60 to Sta. 24+50, Rt.
20+08 21+00
Not to Scale

Note:
For Limits of New Concrete Sidewalk,
See Roadway Plan.



TYPICAL SECTION
Sta. 18+50 to Sta. 18+67
Scale: 1/4"=1'-0"

LEGEND FOR AS-BUILT POSTINGS	
	Squiggly line for as-built deletion
	Double line for as-built deletion
Roadway	Text for as-built posting

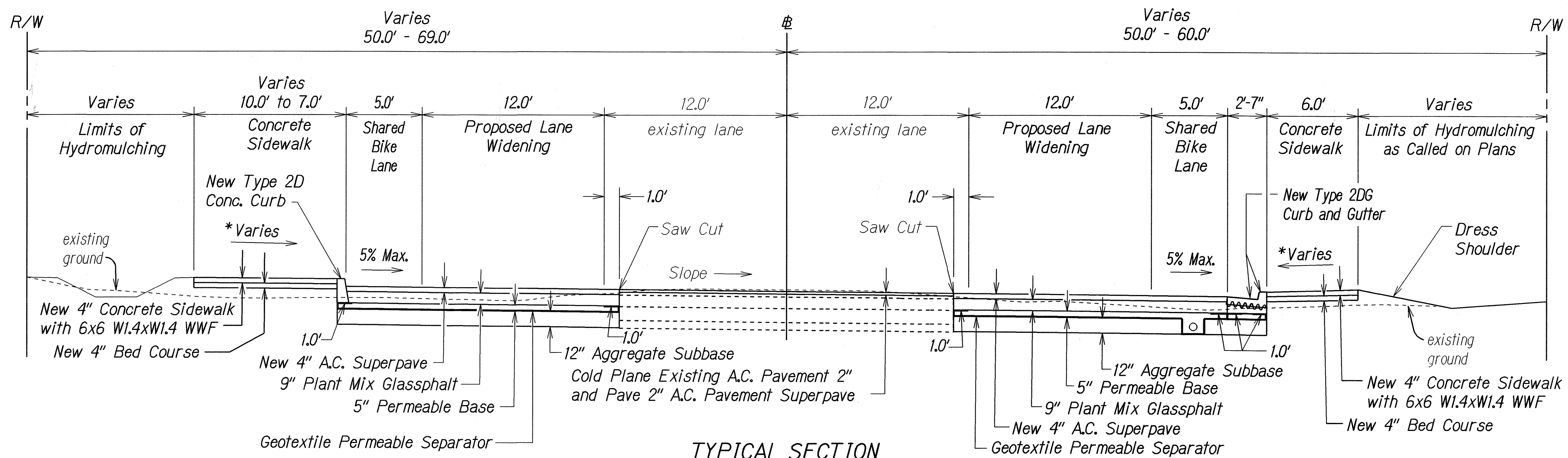
STATE OF HAWAII
DEPARTMENT OF TRANSPORTATION
HIGHWAYS DIVISION

TYPICAL SECTION
KANEIHE BAY DRIVE IMPROVEMENTS
Vicinity of Puohala Street to Kawa Bridge
Federal Aid Project No. STP-065-1(9)
Scale: 1/4" = 1'-0" Date: June, 2002

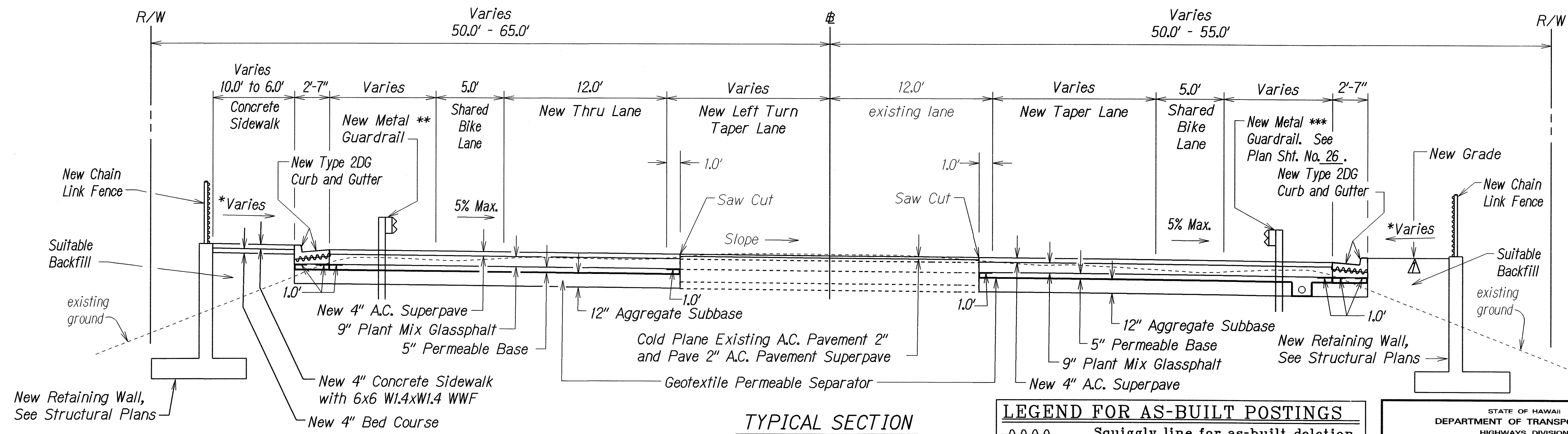
SHEET No. 1 OF 3 SHEETS

ORIGINAL PLAN
DATE: 10/2/02
DRAWN BY: S.T. Oa. SW.
DESIGNED BY: R.H. TN.
CHECKED BY: N.4.2011.01
asbuilt.kandis01.dgn

FED. ROAD DIST. NO.	STATE	FED. AID PROJ. NO.	FISCAL YEAR	SHEET NO.	TOTAL SHEETS
HAWAII	HAW.	STP-065-1(9)	2003	ADD. II	114



TYPICAL SECTION
 # Sta. 23+50 to # Sta. 32+09
 Scale: 1/4"=1'-0"



TYPICAL SECTION
 # Sta. 32+09 to # Sta. 34+78
 Scale: 1/4"=1'-0"

LEGEND FOR AS-BUILT POSTINGS	
	Squiggly line for as-built deletion
	Double line for as-built deletion
	Text for as-built posting

STATE OF HAWAII

DEPARTMENT OF TRANSPORTATION

HIGHWAYS DIVISION

TYPICAL SECTION

KANEHOE BAY DRIVE IMPROVEMENTS

Vicinity of Puohala Street to Kawa Bridge

Federal Aid Project No. STP-065-1(9)

Scale: 1/4" = 1'-0"

Date: June, 2002

SHEET No. 2 OF 3 SHEETS

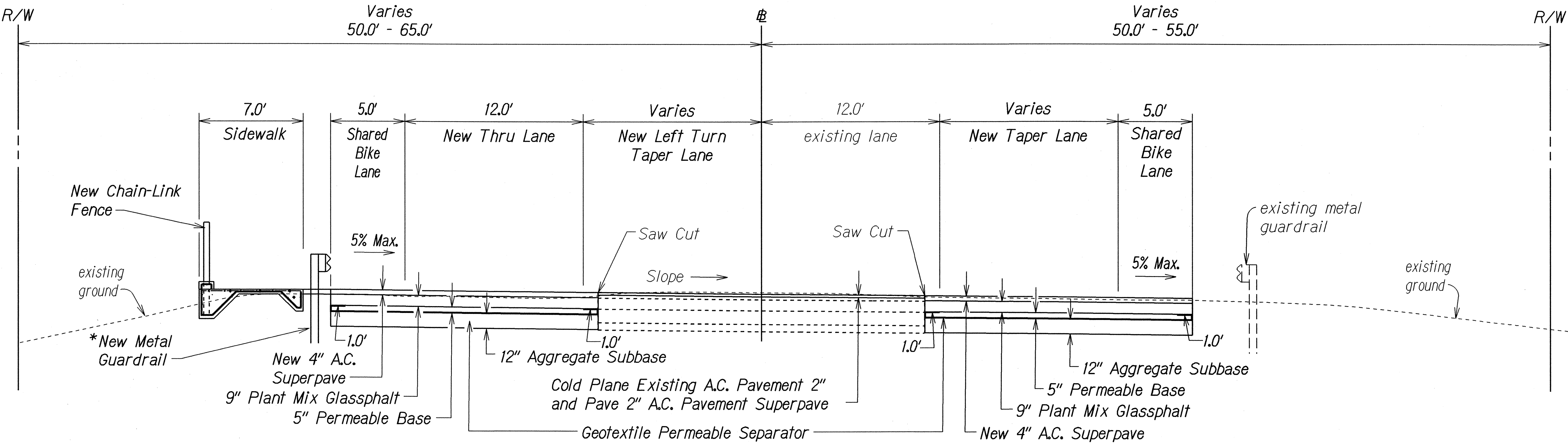
*See Pavement Grade Plans
 **New Guardrail, Type 3 Single w/ Steel Posts # Sta. 33+95± Lt. to 35+29± Lt., See Plan Sht. No. 26 .
 ***New Guardrail, Type 3 Single w/ Steel Posts # Sta. 33+11± Rt. to 35+29± Rt., See Plan Sht. No. 26 .

DATE	2/3/03	Revised Typical Section # Sta. 32+09 to # Sta. 34+78
REVISION		

"AS-BUILT"

ADD. 11

FED. ROAD DIST. NO.	STATE	FED. AID PROJ. NO.	FISCAL YEAR	SHEET NO.	TOTAL SHEETS
HAWAII	HAW.	STP-065-1(9)	2003	12	114



*See Plan Sheet Nos. 25 & 26 for
Typical Guardrail Installation.

TYPICAL SECTION
 ± Sta. 34+78.00 to ± Sta. 35+27.70
 Scale: 1/4"=1'-0"

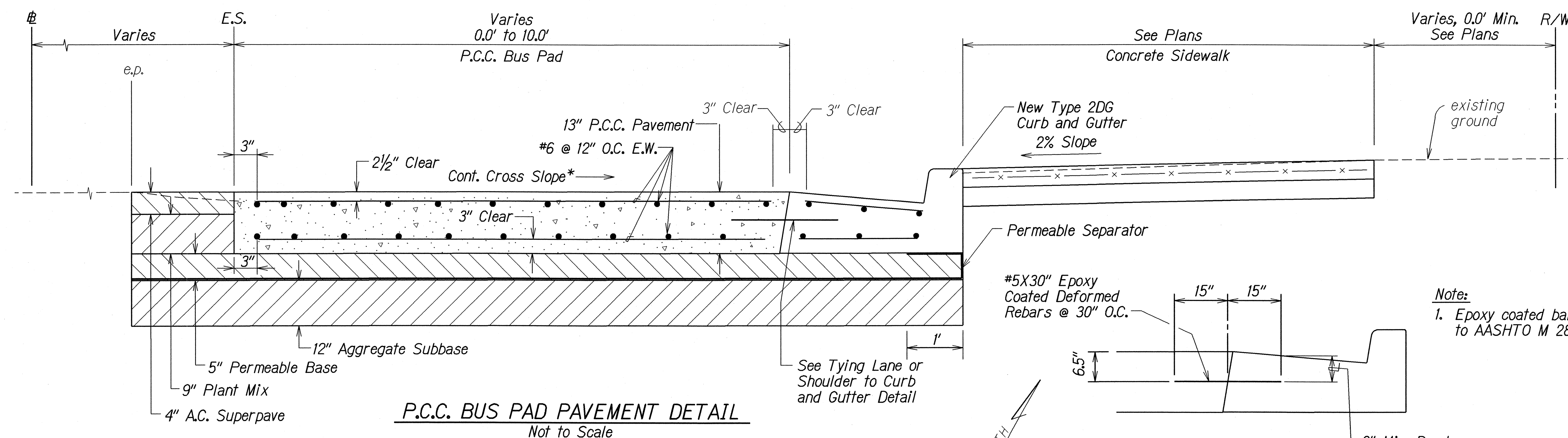
DESIGNED BY	DATE
DRAWN BY	12/13/02
CHECKED BY	
NOTED BY	
QUANTITIES BY	
ORIGINAL PLAN	

STATE OF HAWAII
DEPARTMENT OF TRANSPORTATION
HIGHWAYS DIVISION

TYPICAL SECTION
KANEŌHE BAY DRIVE IMPROVEMENTS
Vicinity of Puohala Street to Kawa Bridge
Federal Aid Project No. STP-065-1(9)
Scale: 1/4" = 1'-0" Date: June, 2002

SHEET No. 3 OF 3 SHEETS

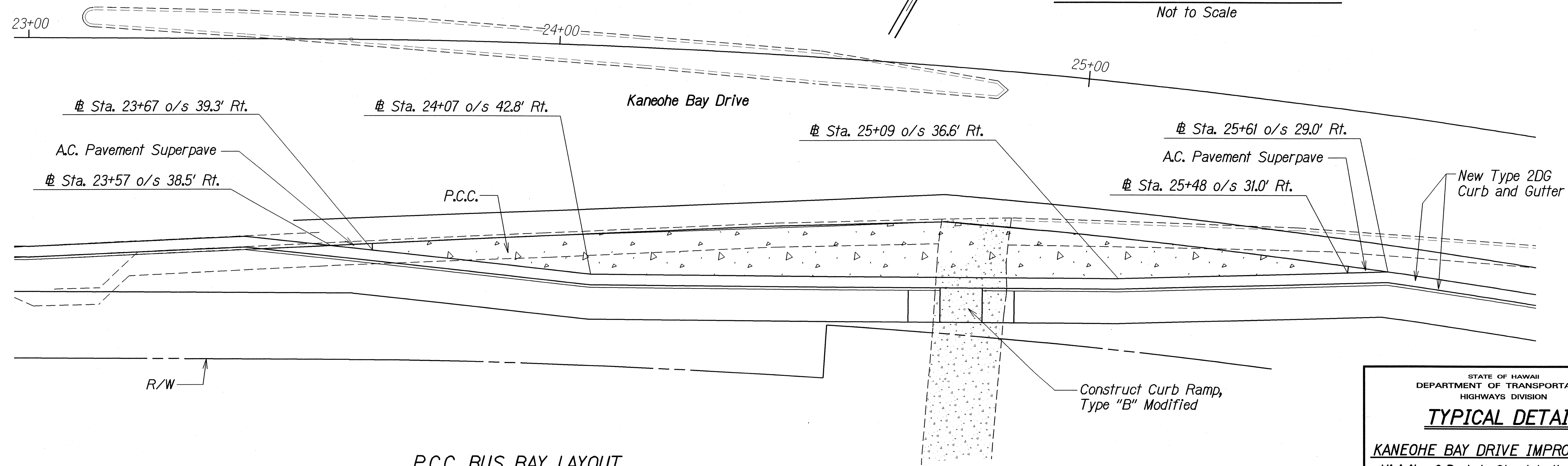
FED. ROAD DIST. NO.	STATE	FED. AID PROJ. NO.	FISCAL YEAR	SHEET NO.	TOTAL SHEETS
HAWAII	HAW.	STP-065-1(9)	2003	13	114



P.C.C. BUS PAD PAVEMENT DETAIL
Not to Scale

* For Bus Pad at Sta. 23+50, Rt. to Sta. 25+61, Rt.,
See Pavement Grade Plan on Sheet Nos. 32-34 .

TYING LANE OR SHOULDER TO CURB AND GUTTER DETAIL
Not to Scale



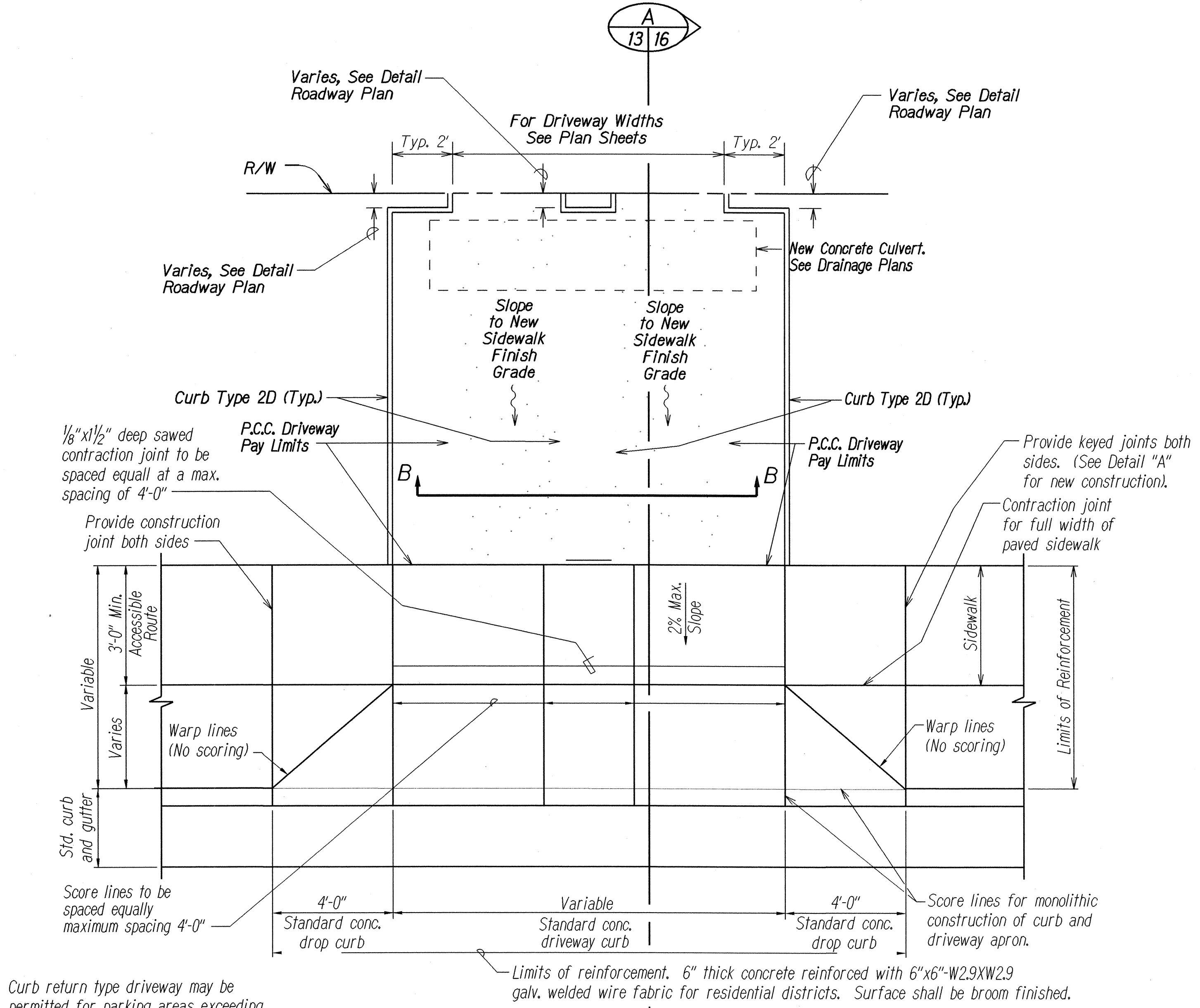
P.C.C. BUS BAY LAYOUT
Scale: 1" = 10'-0"

DESIGNED BY	DATE
DRAWN BY	
CHECKED BY	
NOTED BY	
QUANTITIES BY	
DATE	

STATE OF HAWAII
DEPARTMENT OF TRANSPORTATION
HIGHWAYS DIVISION

TYPICAL DETAIL
KANEOHE BAY DRIVE IMPROVEMENTS
Vicinity of Puohala Street to Kawa Bridge
Federal Aid Project No. STP-065-1(9)
Scale: As Shown Date: June, 2002
SHEET No. 1 OF 7 SHEETS

FED. ROAD DIST. NO.	STATE	FED. AID PROJ. NO.	FISCAL YEAR	SHEET NO.	TOTAL SHEETS
HAWAII	HAW.	STP-065-1(9)	2003	ADD. 14	114



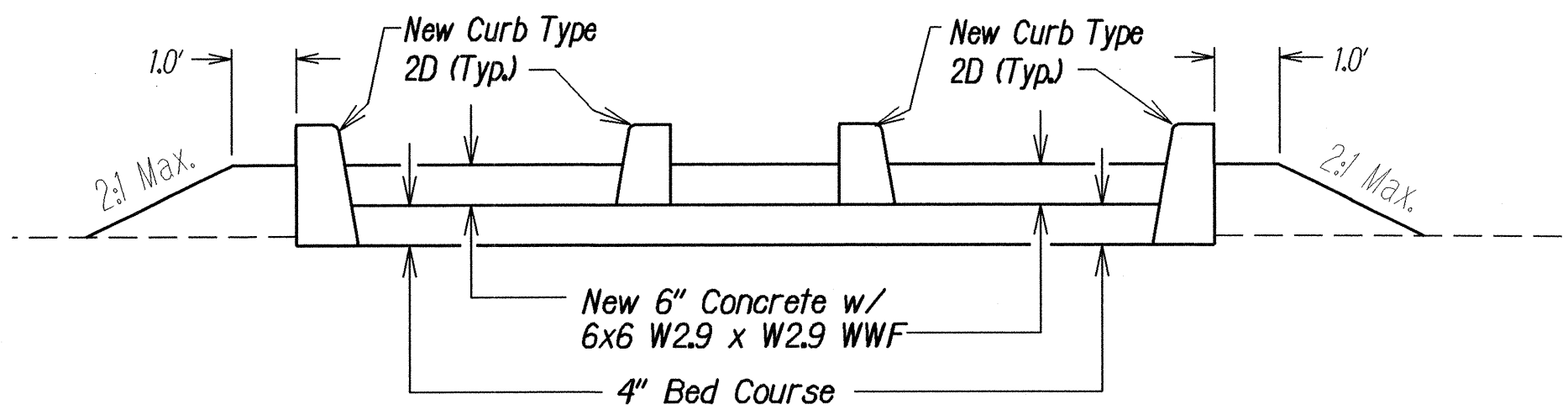
Curb return type driveway may be permitted for parking areas exceeding 100 spaces, fire stations and hospitals.

For Driveway Details, See Plan Sheet Nos. 16 & 17.

PLAN
Not to Scale

Note:
The Removal of Existing A.C. and Concrete shall be Considered Incidental to Construction.

New Concrete Driveway
Sta. 28+91 to Sta. 29+27
Sta. 30+31 to Sta. 30+72



SECTION "B-B"
Not to Scale

2/3/03 Revised Plan and Section

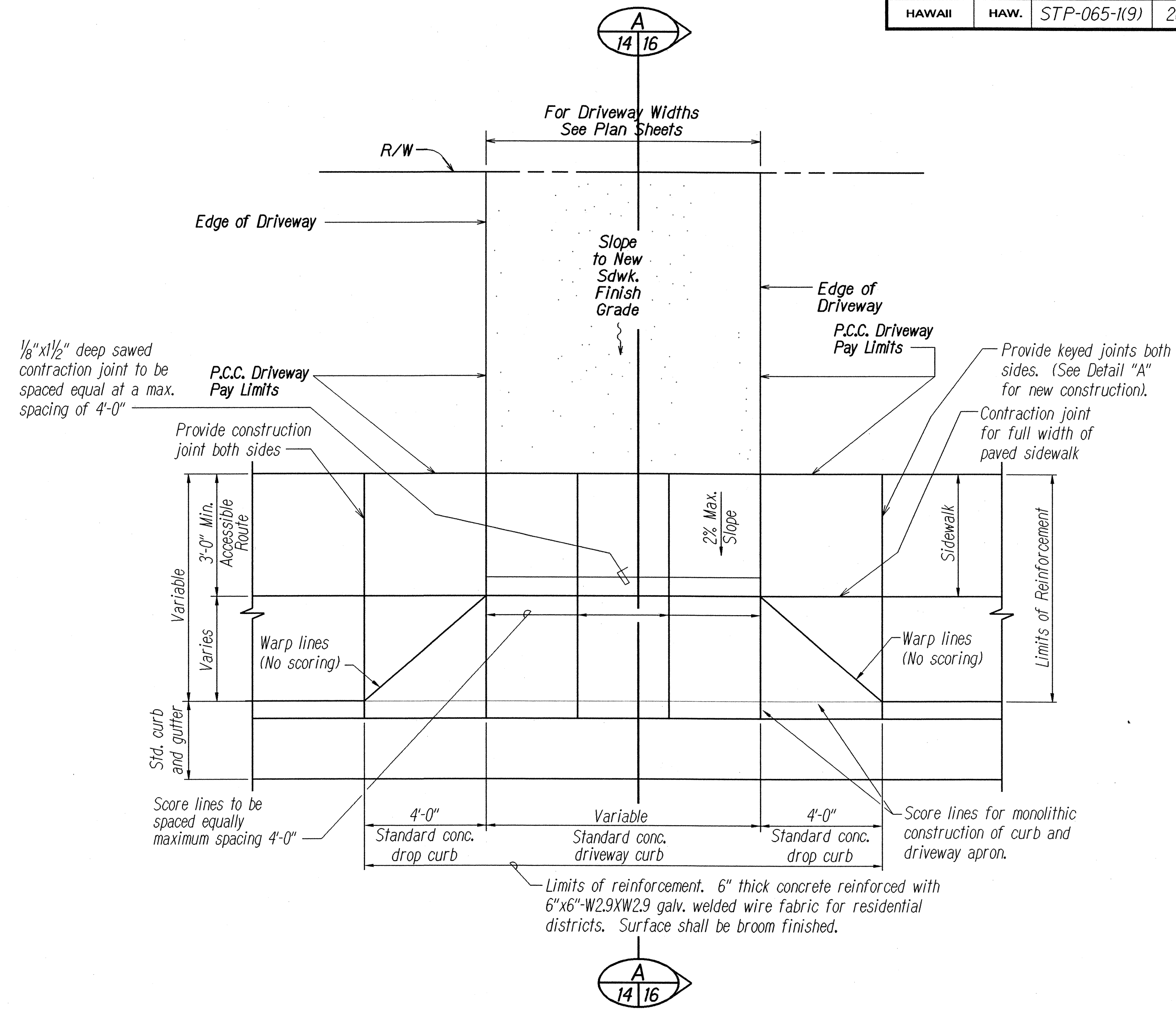
DATE REVISION

STATE OF HAWAII
DEPARTMENT OF TRANSPORTATION
HIGHWAYS DIVISION
TYPICAL DETAIL
KANEHOE BAY DRIVE IMPROVEMENTS
Vicinity of Puohala Street to Kawa Bridge
Federal Aid Project No. STP-065-1(9)
Not to Scale Date: June, 2002

SHEET No. 2 OF 7 SHEETS

ADD. 14

FED. ROAD DIST. NO.	STATE	FED. AID PROJ. NO.	FISCAL YEAR	SHEET NO.	TOTAL SHEETS
HAWAII	HAW.	STP-065-1(9)	2003	15	114



For Driveway Details,
See Plan Sheet Nos. 16 & 17 .

PLAN
Not to Scale

ORIGINAL PLAN	SURVEY PLOTTED BY	DATE
NOTE BOOK	DESIGNED BY	
QUANTITIES BY	CHECKED BY	
NO. 1000000		

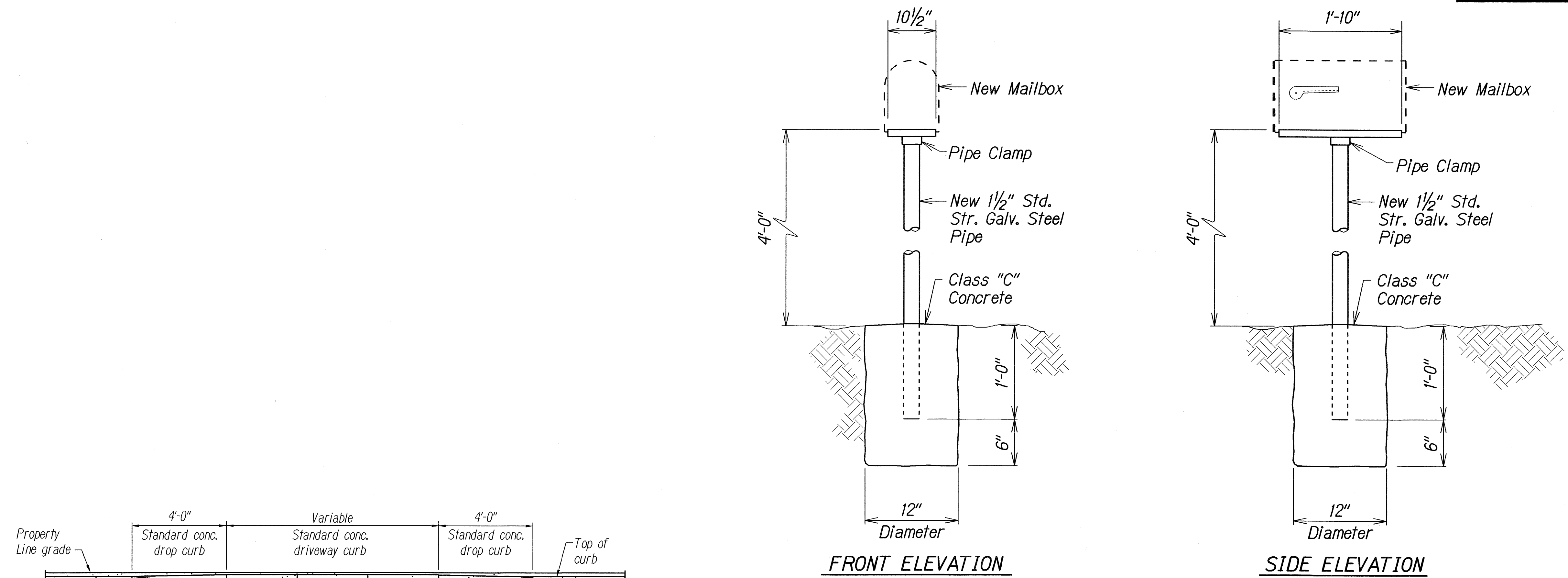
STATE OF HAWAII
DEPARTMENT OF TRANSPORTATION
HIGHWAYS DIVISION

TYPICAL DETAIL
KANE OHE BAY DRIVE IMPROVEMENTS
Vicinity of Puohala Street to Kawa Bridge
Federal Aid Project No. STP-065-1(9)

Not to Scale
Date: June, 2002

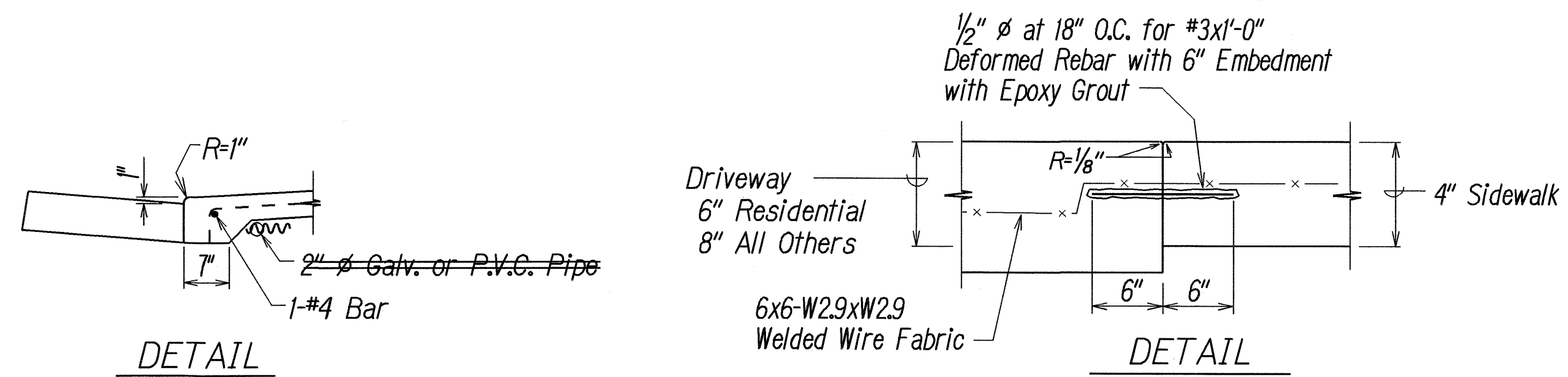
SHEET No. 3 OF 7 SHEETS

FED. ROAD DIST. NO.	STATE	FED. AID PROJ. NO.	FISCAL YEAR	SHEET NO.	TOTAL SHEETS
HAWAII	HAW.	STP-065-1(9)	2003	16	114



ELEVATION
NOT TO SCALE

TYPICAL MAILBOX DETAIL
Not to Scale



TYPICAL DETAILS OF REINF. CONC. DROP DRIVEWAY

Mailboxes shall be of light sheet metal or plastic construction conforming to the requirements of the U.S. Postal Service.

The Contractor shall provide mailboxes at all times unless otherwise noted.

LEGEND FOR AS-BUILT POSTINGS	
	Squiggly line for as-built deletion
	Double line for as-built deletion
Roadway	Text for as-built posting

STATE OF HAWAII
DEPARTMENT OF TRANSPORTATION
HIGHWAYS DIVISION

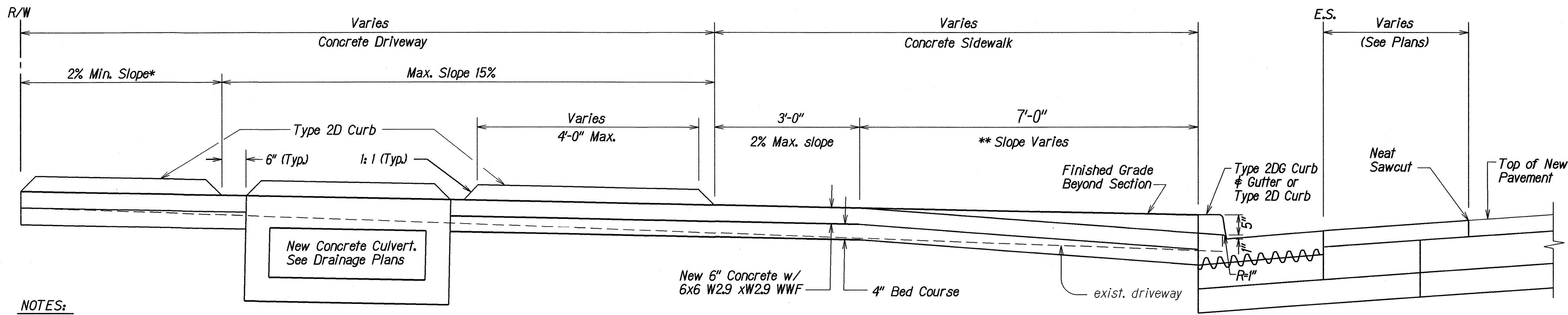
TYPICAL DETAIL
KANE OHE BAY DRIVE IMPROVEMENTS
Vicinity of Puohala Street to Kawa Bridge
Federal Aid Project No. STP-065-1(9)

Not to Scale
Date: June, 2002

SHEET No. 4 OF 7 SHEETS

ORIGINAL PLAN	DATE
NOTED BY	DATE
DESIGNED BY	DATE
QUANTITIES BY	DATE
CHECKED BY	DATE

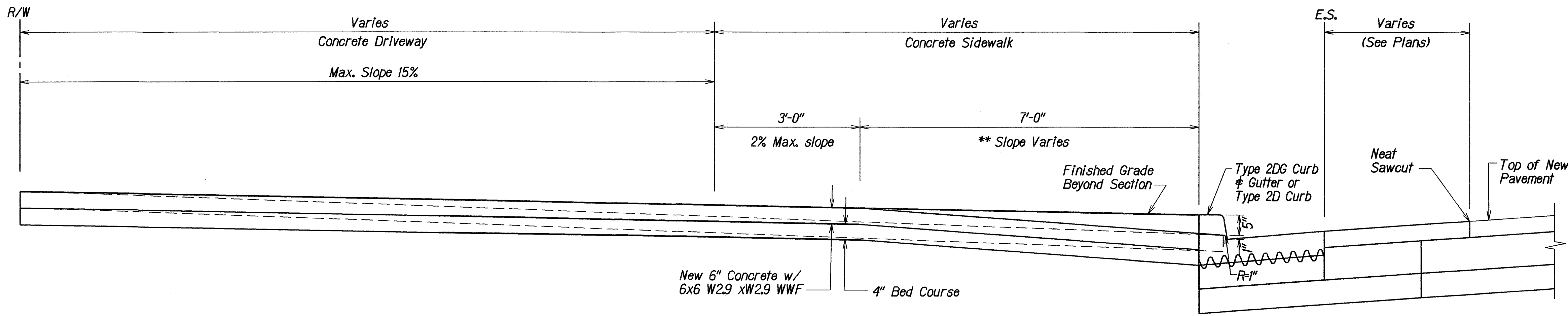
FED. ROAD DIST. NO.	STATE	FED. AID PROJ. NO.	FISCAL YEAR	SHEET NO.	TOTAL SHEETS
HAWAII	HAW.	STP-065-1(9)	2003	17	114



NOTES:

- For additional details, see Standard Plan Sheet No. D-05.
- For driveway at Sta. 30+50, Lt., reverse 2% cross slope and meet existing grade at Right-of-Way line.
- 2'-0" Minimum, Sta. 24+00 to Sta. 25+00
4'-0" Minimum, Sta. 25+00 to Sta. 31+00
- Breakover and departure angles should not exceed 10 degrees or 17%.

SECTION "A-A"
Not to Scale
**CONCRETE DROP DRIVEWAY
WITH CONCRETE CULVERT**



SECTION "A-A"
Not to Scale
**CONCRETE DROP DRIVEWAY
WITHOUT CONCRETE CULVERT**

LEGEND FOR AS-BUILT POSTINGS	
	Squiggly line for as-built deletion
	Double line for as-built deletion
Roadway	Text for as-built posting

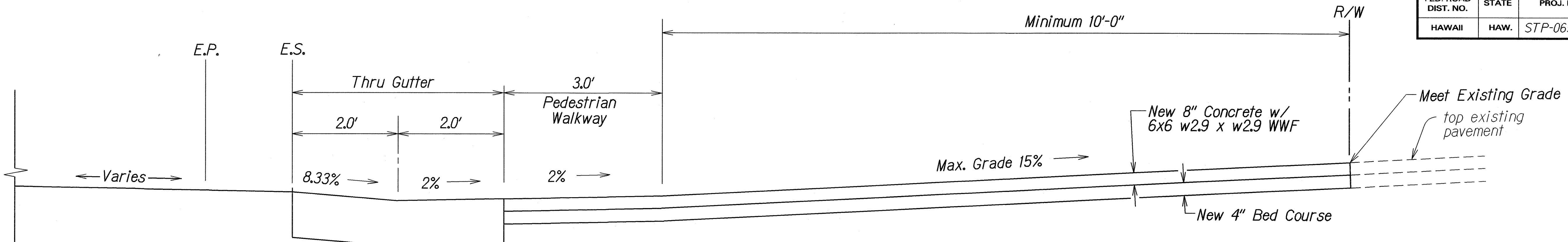
STATE OF HAWAII
DEPARTMENT OF TRANSPORTATION
HIGHWAYS DIVISION

TYPICAL SECTION & DETAIL
KANEOHE BAY DRIVE IMPROVEMENTS
Vicinity of Puohala Street to Kawa Bridge
Federal Aid Project No. STP-065-1(9)
Not to Scale
Date: June, 2002

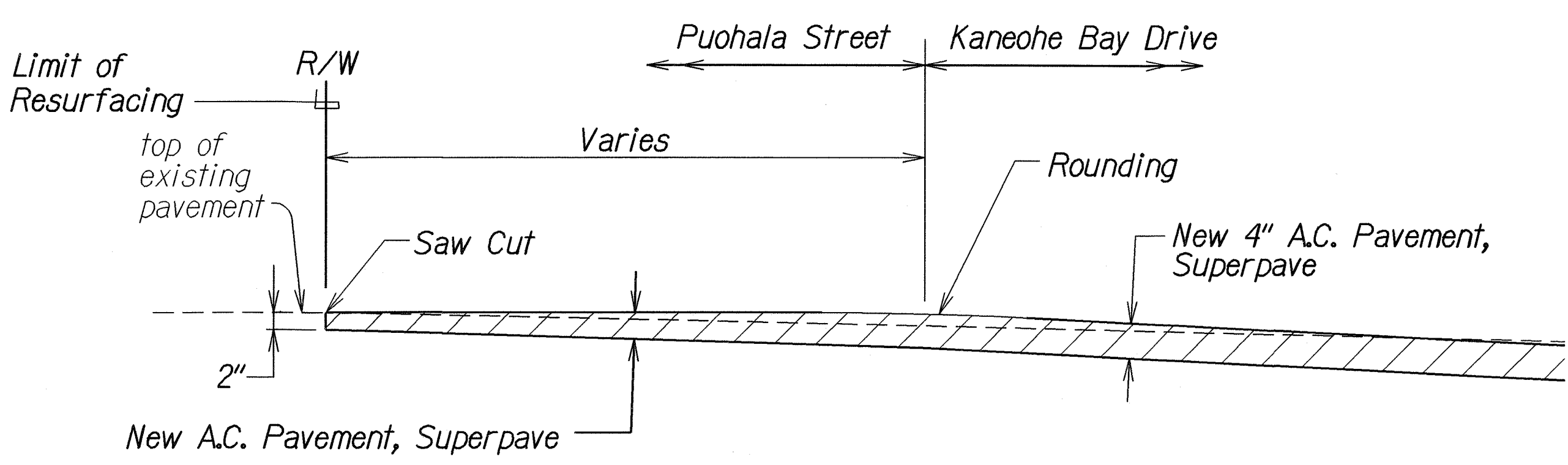
ORIGINAL PLAN	DATE
NOTE BOOK	DESIGNED BY
QUANTITIES BY	CHECKED BY
4/20/02	

"AS-BUILT"

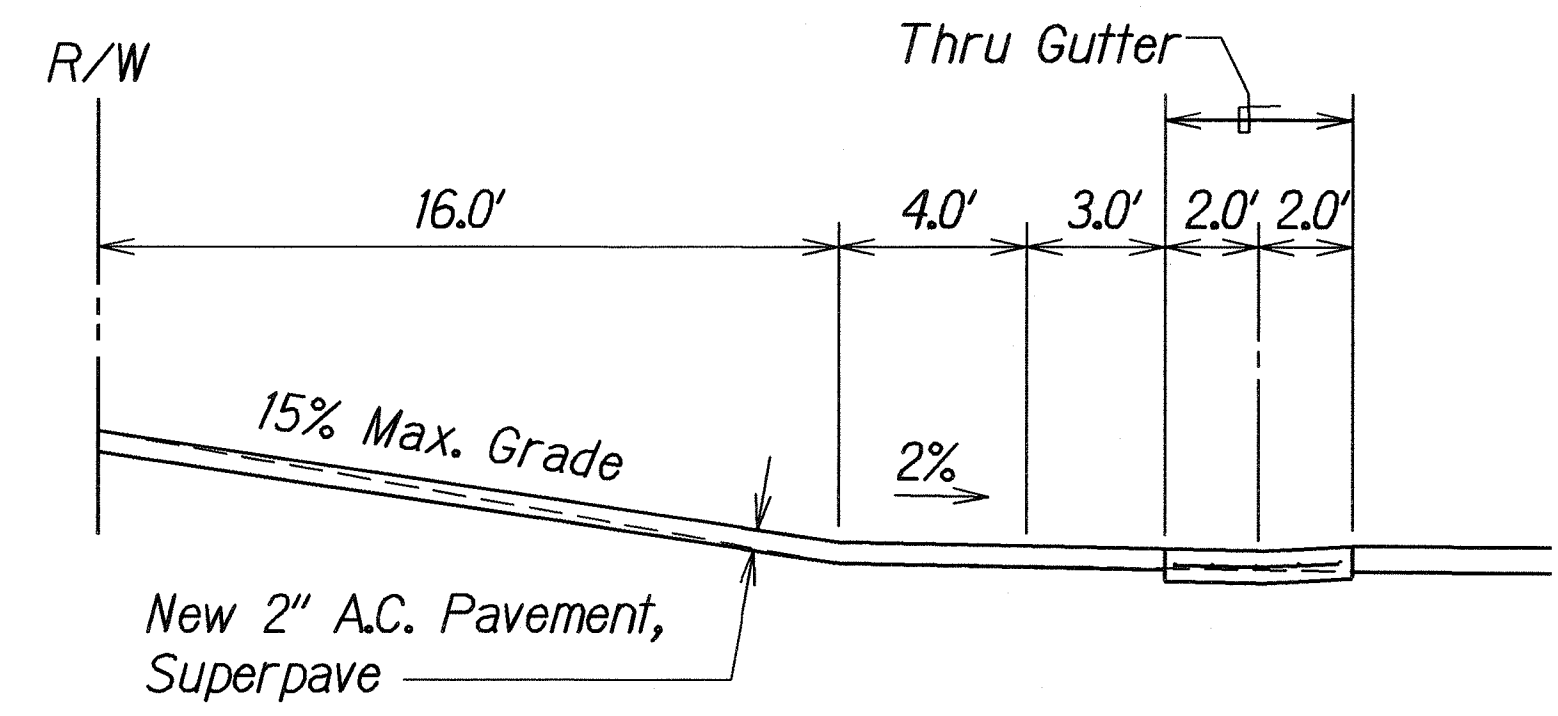
FED. ROAD DIST. NO.	STATE	FED. AID PROJ. NO.	FISCAL YEAR	SHEET NO.	TOTAL SHEETS
HAWAII	HAW.	STP-065-1(9)	2003	ADD. 18	114



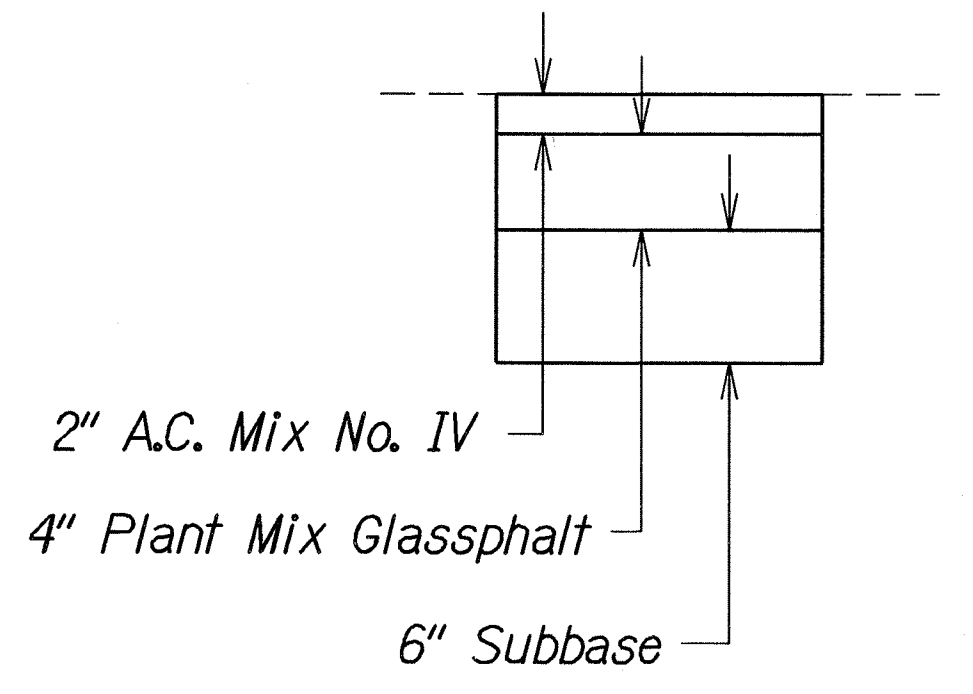
DRIVEWAY PROFILE AT
CASTLE HIGH SCHOOL AUDITORIUM PARKING LOT AT STA. 26+80
 Not to Scale



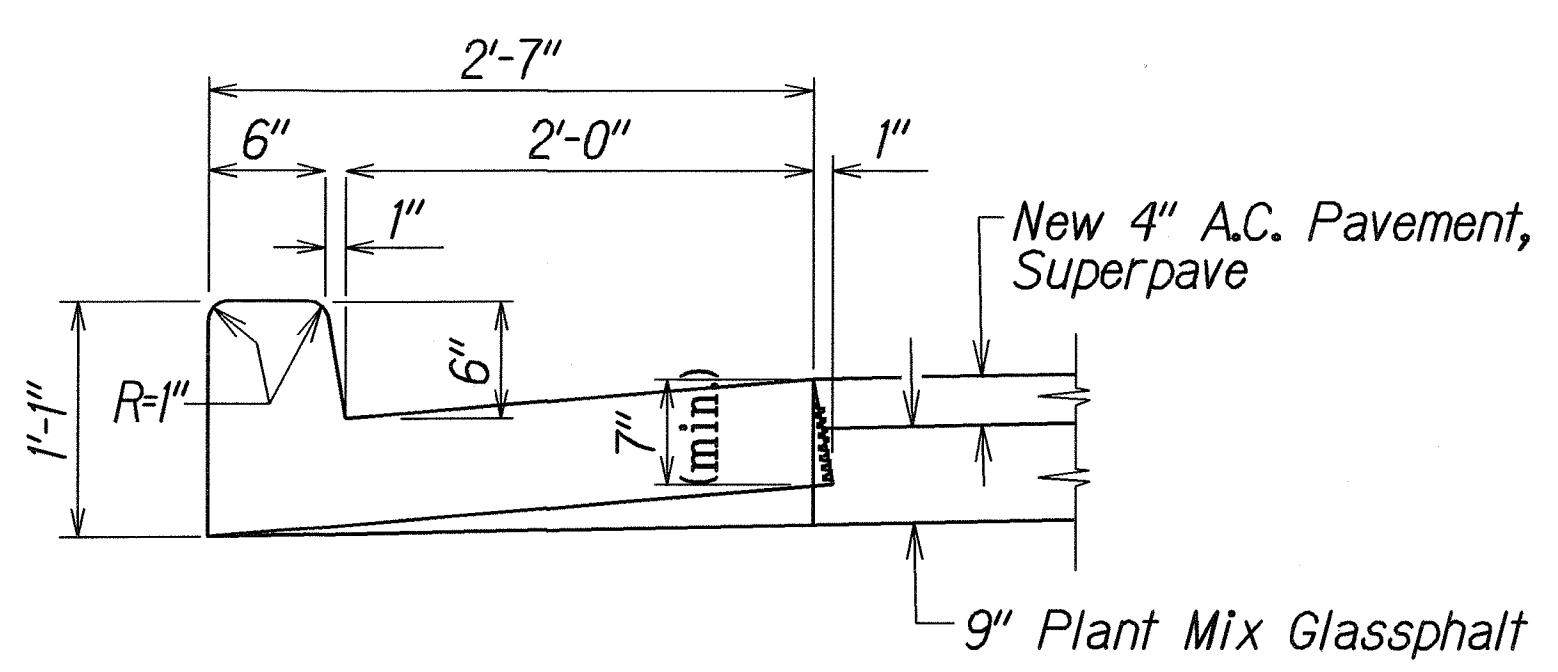
TRANSITION AT PUOHALA STREET AND KANEOHE BAY DRIVE
 Not To Scale



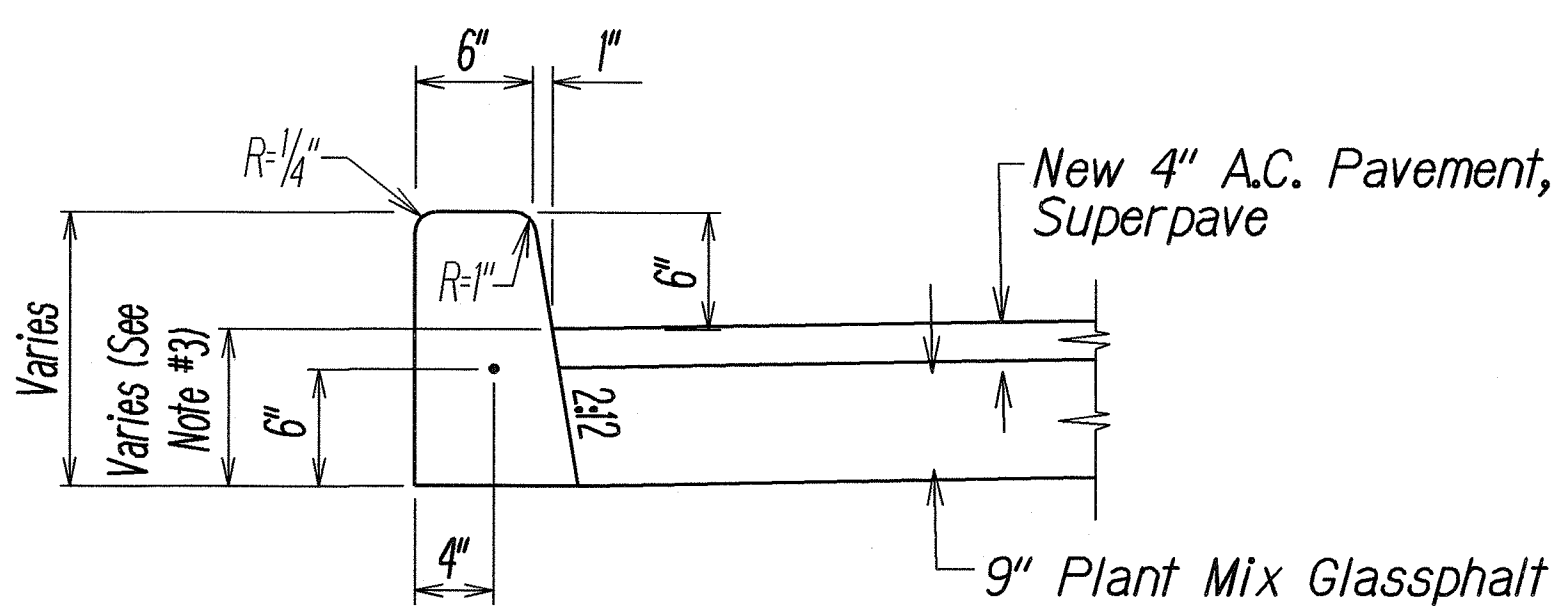
PROFILE AT NOHEA PLACE AND KANEOHE BAY DRIVE
 Not To Scale
 Note:
 Grade Nohea Place and Thru Gutter with A.C. Superpave



TYPICAL TEMPORARY PAVEMENT WIDENING
DURING CONSTRUCTION
 Not To Scale



CURB AND GUTTER, TYPE 2DG

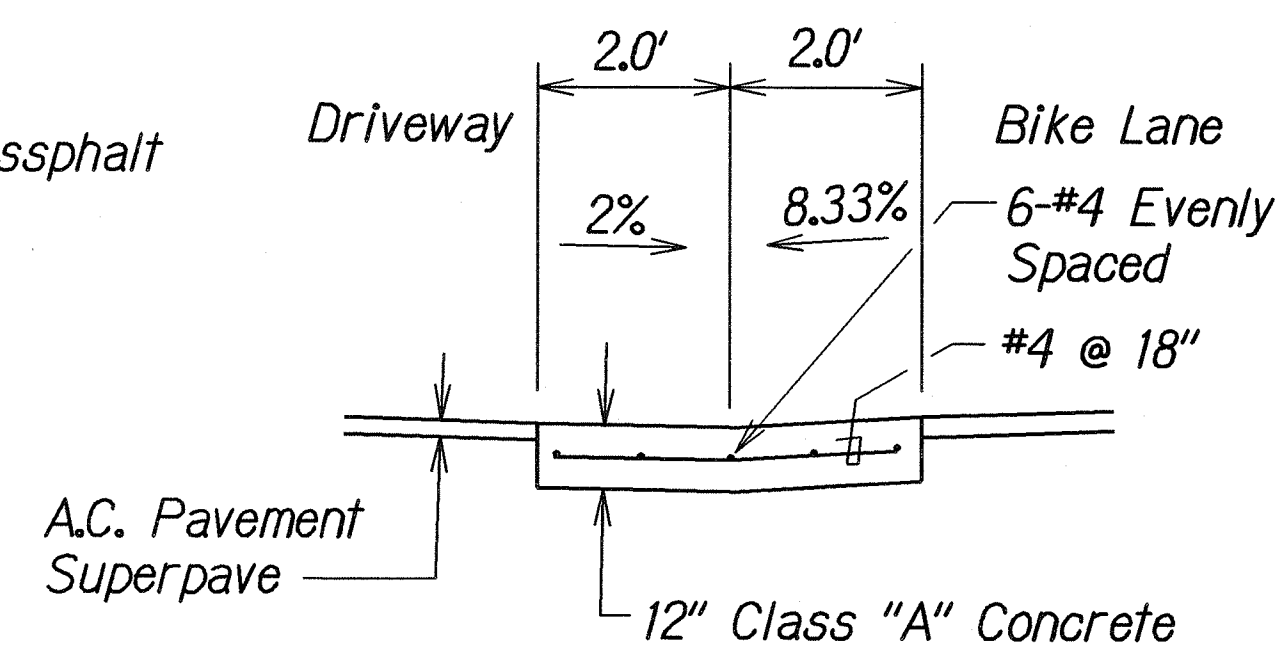


CURB, TYPE 2D

CAST-IN-PLACE CONCRETE CURBS AND/OR GUTTERS
 Not To Scale

- Notes:
1. Cast-In-Place P.C.C. gutters shall be longitudinally broom finished.
 2. The top of all types of concrete curbs, including driveway curbs shall be longitudinally broom finished.
 3. For A.C. pavement areas, use the same thickness as A.C.+A.C.B. but not less than 10" (For P.C.C. areas, use the same thickness as P.C.C. pavement).

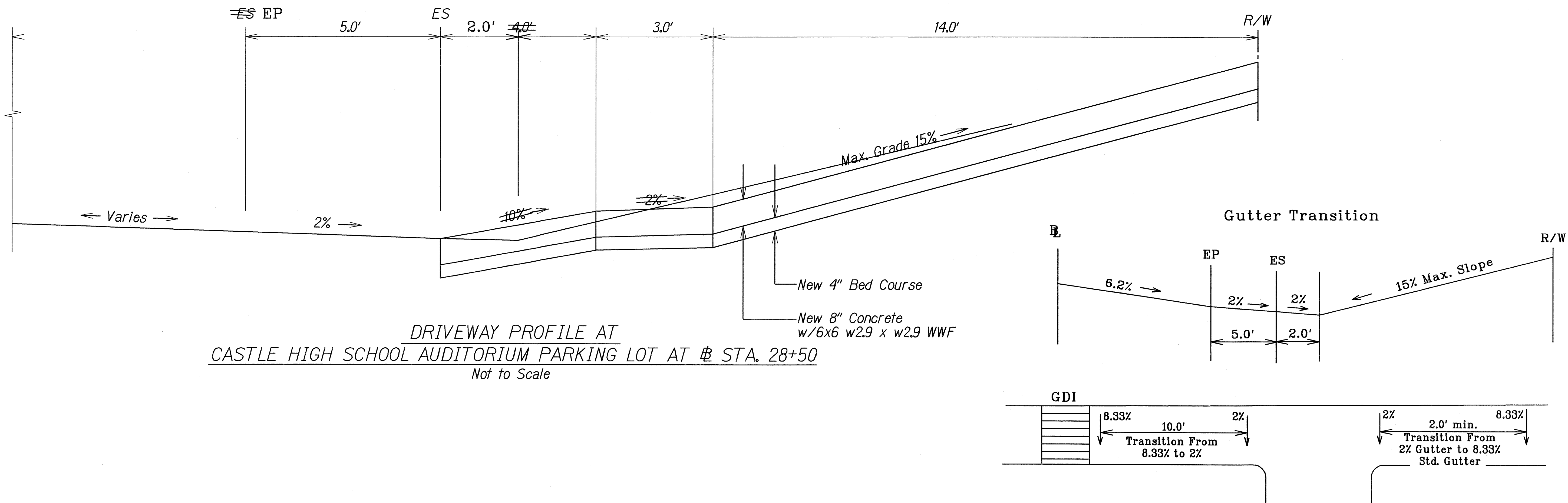
LEGEND FOR AS-BUILT POSTINGS	
	Squiggly line for as-built deletion
	Double line for as-built deletion
Roadway	Text for as-built posting



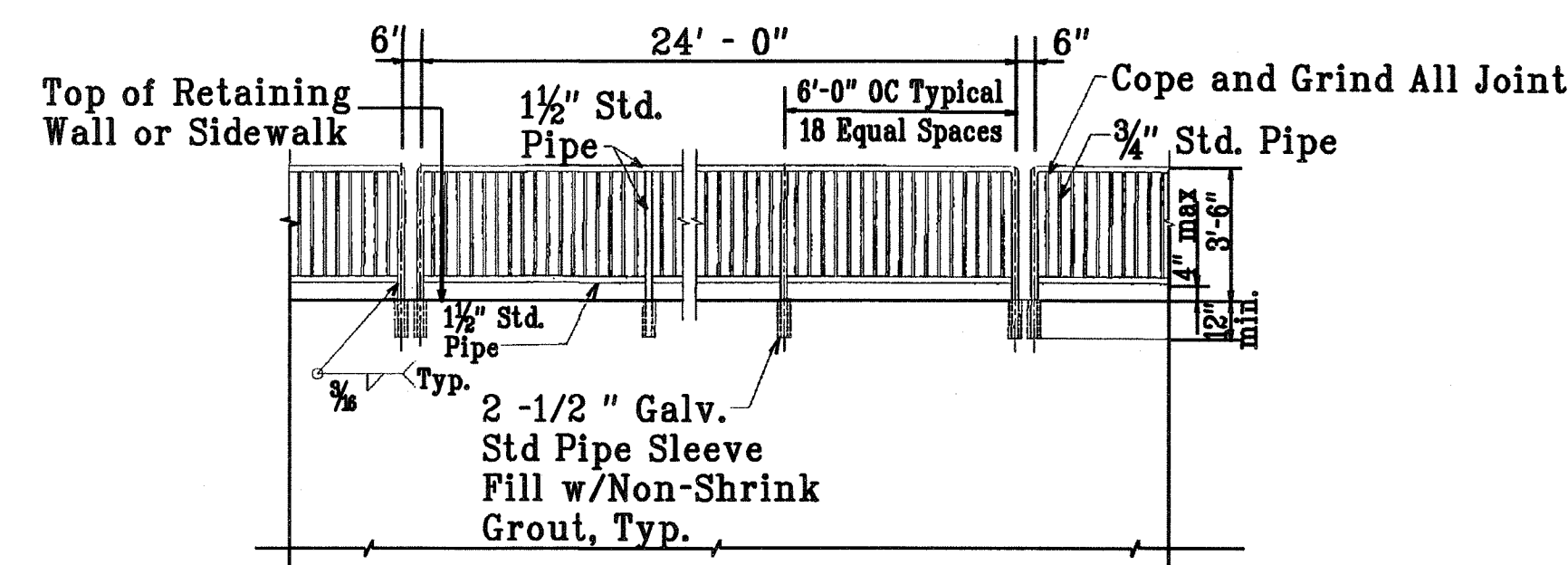
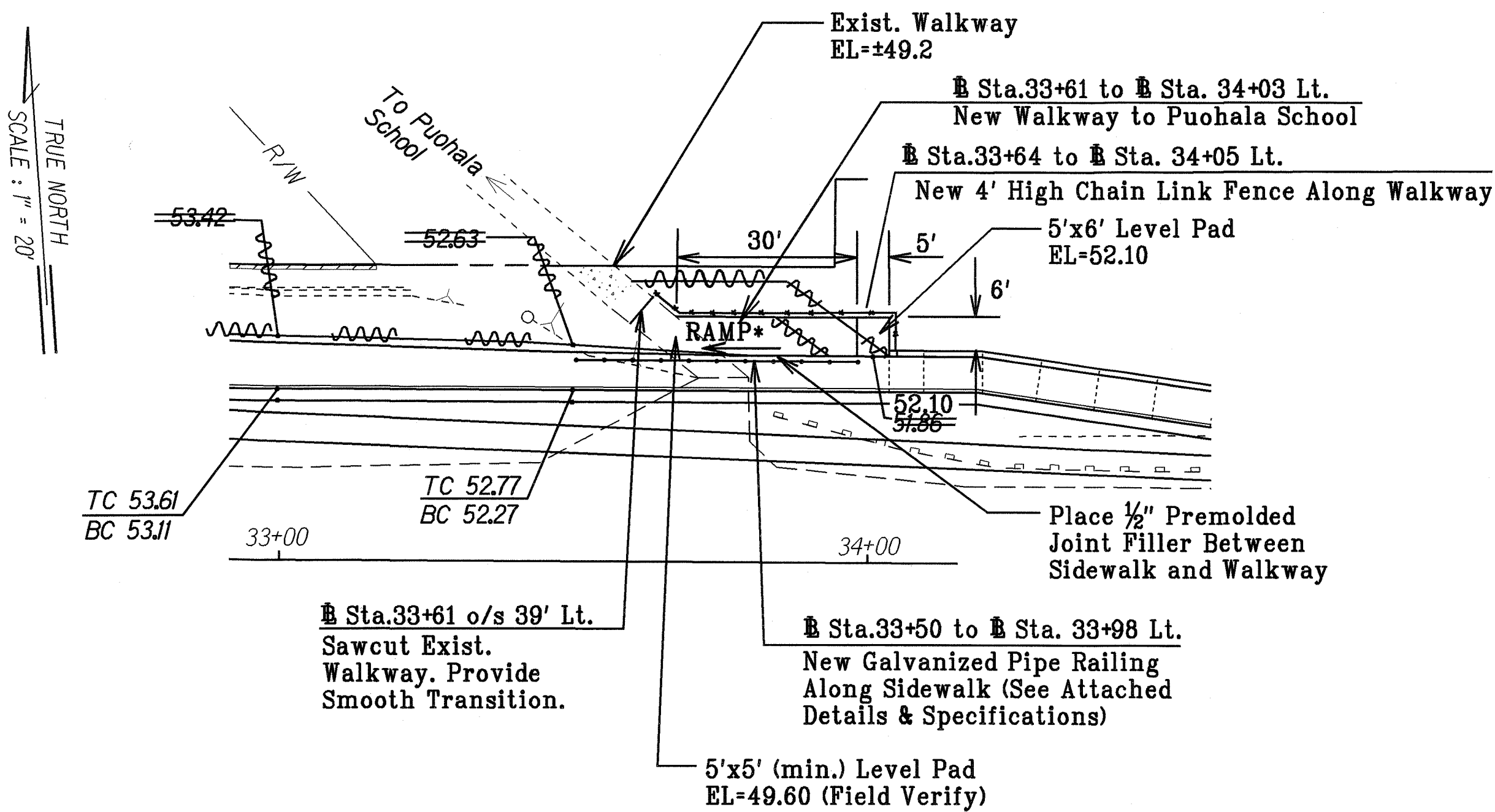
TYPICAL DETAIL
THRU GUTTER
 Not to Scale

2/3/03	Revised Driveway Profile Location
DATE	REVISION
STATE OF HAWAII DEPARTMENT OF TRANSPORTATION HIGHWAYS DIVISION	
TYPICAL SECTIONS & DETAILS	
KANEOHE BAY DRIVE IMPROVEMENTS	
Vicinity of Puohala Street to Kawa Bridge	
Federal Aid Project No. STP-065-1(9)	
Not to Scale	Date: June, 2002
SHEET No. 6 OF 7 SHEETS	

FED. ROAD DIST. NO.	STATE	FED. AID PROJ. NO.	FISCAL YEAR	SHEET NO.	TOTAL SHEETS
HAWAII	HAW.	STP-065-1(9)	2003	ADD. 18 S-1	114



- Notes :
- * Ramp with Max. S = 8.33%
 - Walkway crossslopes not to exceed 2%
 - Transition grassed slope from Sta. 33+20 to Sta. 33+60± Lt to match grades at exist. Puohala School walkway



- Notes :
- Pipe railing shall be prepared in accordance with Section 501 - Steel Structures of the 1994 Hawaii Standard Specifications For Road, Bridge and Public Works Construction.
 - Pipe railing shall be painted gray or as specified by the Engineer

LEGEND FOR AS-BUILT POSTINGS	
	Squiggly line for as-built deletion
	Double line for as-built deletion
	Text for as-built posting

2/3/03 Added New Sheet

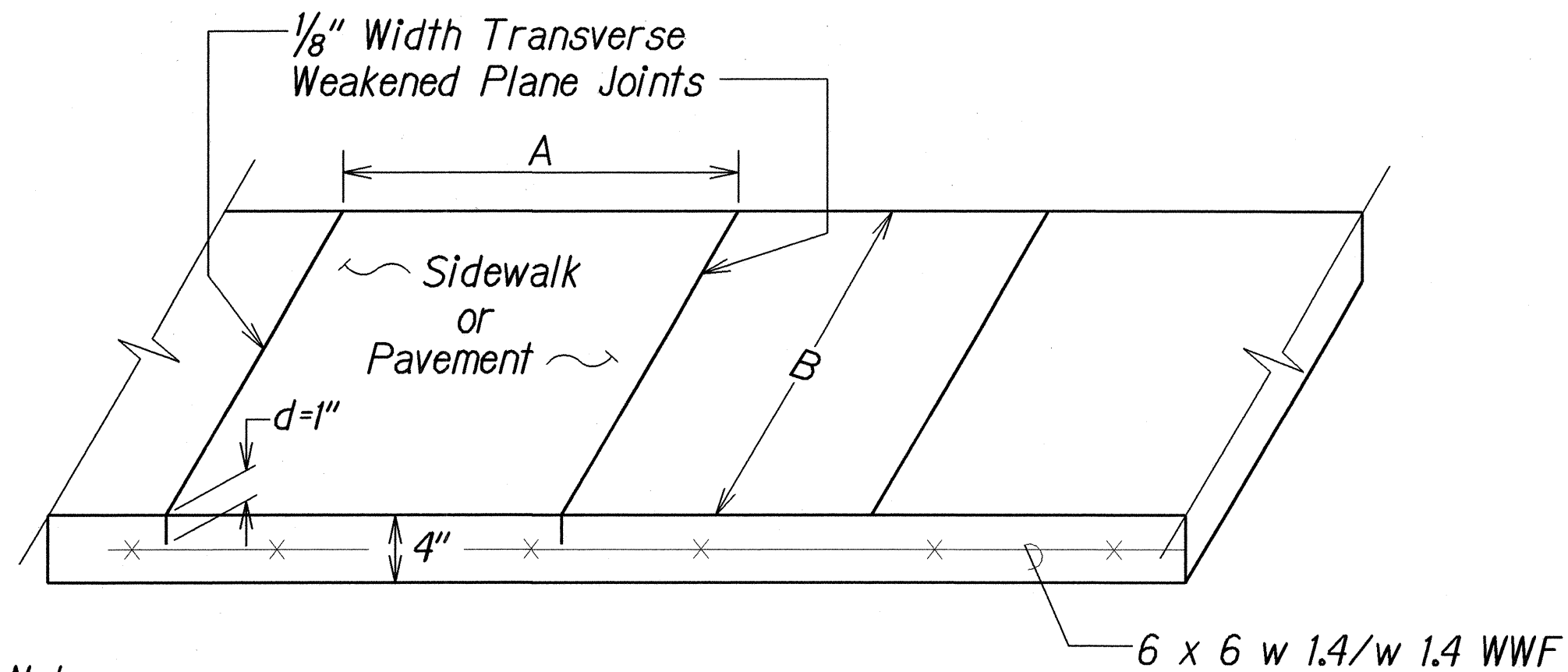
DATE REVISION

STATE OF HAWAII DEPARTMENT OF TRANSPORTATION HIGHWAYS DIVISION	
TYPICAL SECTIONS & DETAILS	
Kaneohe Bay Drive Improvements Vicinity of Puohala Street to Kawa Bridge Federal Aid Project No. STP-065-1(9)	
Not to Scale	Date: June, 2002
SHEET No. 6 OF 7 SHEETS	

"AS-BUILT"

ADD. 18 S-1

FED. ROAD DIST. NO.	STATE	FED. AID PROJ. NO.	FISCAL YEAR	SHEET NO.	TOTAL SHEETS
HAWAII	HAW.	STP-065-1(9)	2003	19	114

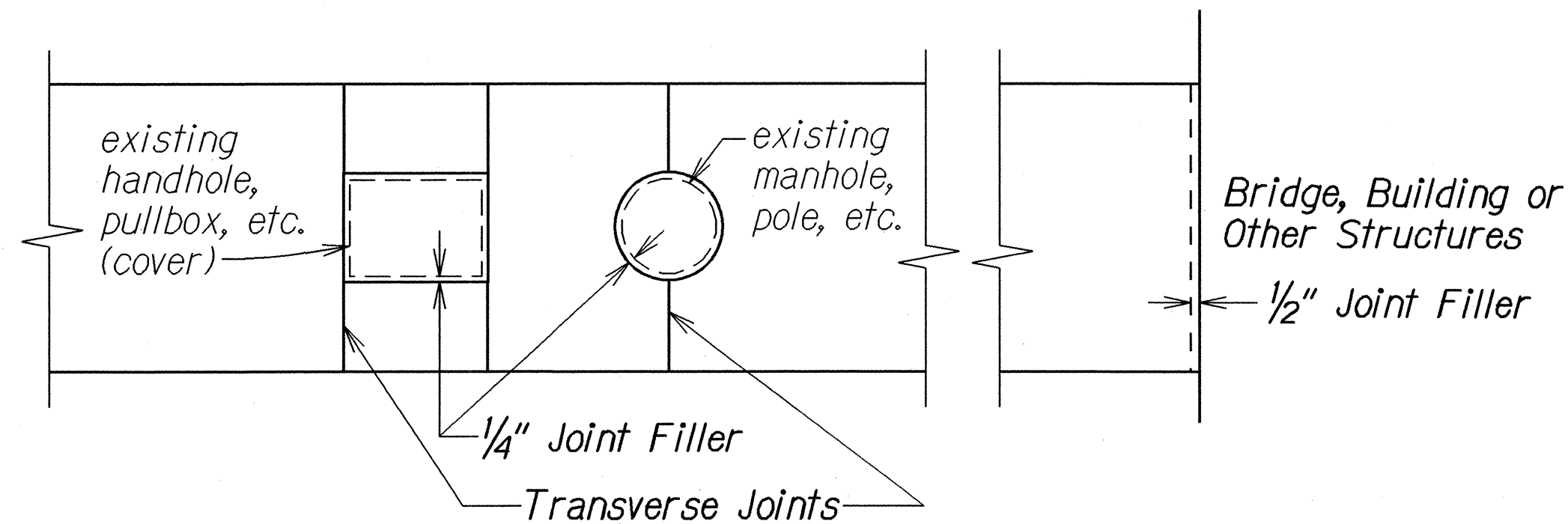


Note:

1. Joint dimension ratios (B/A or A/B) < 1.25 and (A or B) not to exceed 7'
2. Longitudinal weakened plane joints similar to transverse weakened joints.

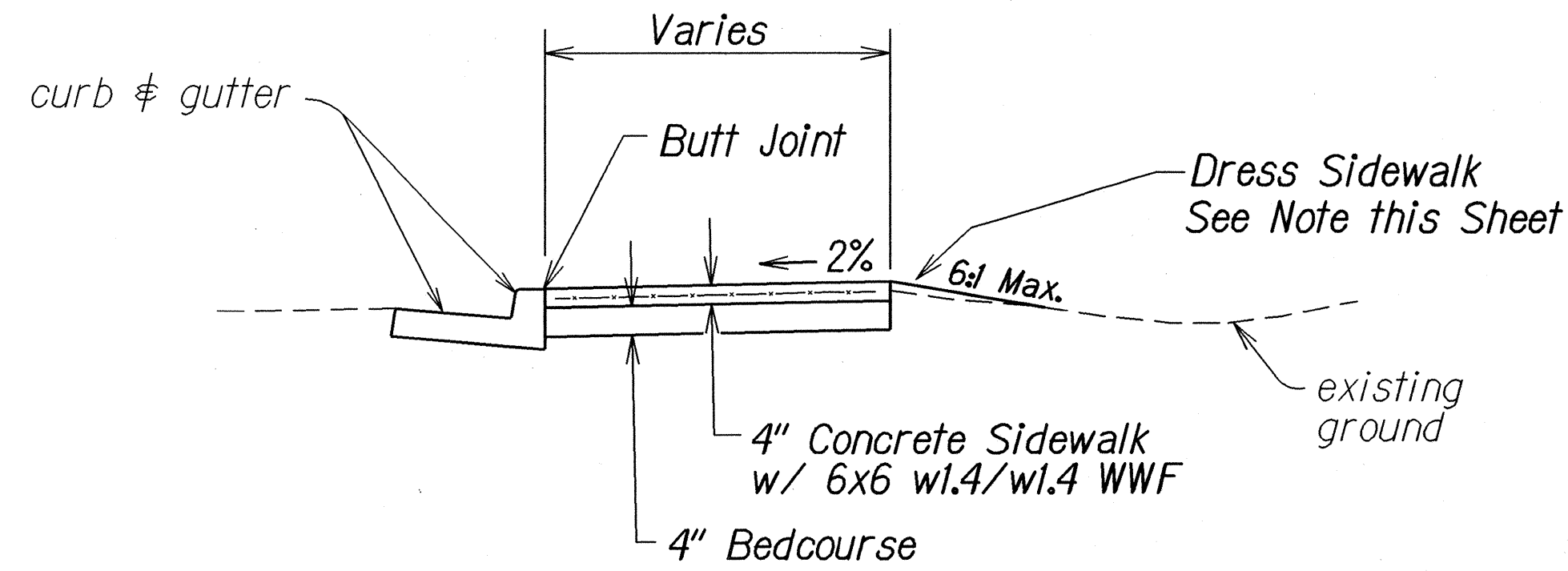
TYPICAL SIDEWALK DETAIL

Not To Scale



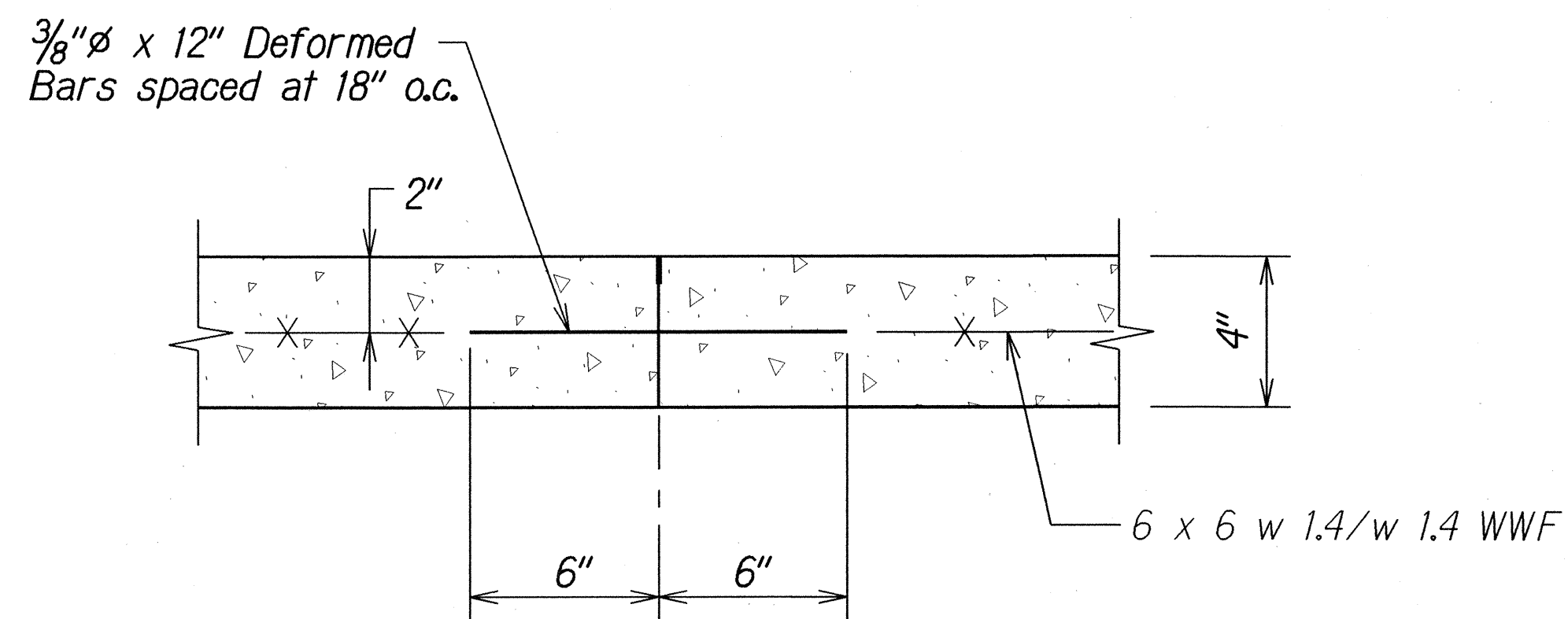
SIDEWALK ISOLATION JOINT DETAIL

Not To Scale



SIDEWALK DETAIL

Not to Scale



TRANSVERSE CONSTRUCTION JOINT DETAIL

Not to Scale

NOTES:

1. Dressing of sidewalk shall consist of clearing, grubbing, grading, reshaping and compacting the area adjacent to the improvement with suitable material as shown on the plans and/or as directed by the Engineer. If existing ground is asphalt or concrete surface, dress sidewalk with A.C. pavement, Mix No. V. This work shall be considered incidental to the new sidewalk.
2. Transverse and longitudinal weakened Plane Joints for sidewalk shall be considered incidental to the New Sidewalk.
3. Installation of tie bars including drilling, and epoxy grout shall be incidental to Sidewalk.

ORIGINAL PLAN	DATE	5/23/01
DESIGNED BY	DRIVEN BY	
QUANTITIES BY	DESIGNED BY	
CHECKED BY	DESIGNED BY	

STATE OF HAWAII DEPARTMENT OF TRANSPORTATION HIGHWAYS DIVISION
TYPICAL DETAILS
KANEOHE BAY DRIVE IMPROVEMENTS
Vicinity of Puuhala Street to Kawa Bridge
Federal Aid Project No. STP-065-1(9)
Not to Scale
Date: June, 2002
SHEET No. 7 OF 7 SHEETS