

FED. ROAD DIST. NO.	STATE	FED. AID PROJ. NO.	FISCAL YEAR	SHEET NO.	TOTAL SHEETS
HAWAII	HAW.	STP-065-1(9)	2003	44	114

GENERAL NOTES FOR TRAFFIC CONTROL PLAN

1. The Contractor shall make minor adjustments at intersecons, driveways, bridges, structures, etc. to fit field conditions.
2. Cones or delineators shall be extended to a point where they are visible to approaching traffic.
3. Traffic control devices shall be installed such that the sign or device farthest from the work area is placed first. The others shall then be placed progressively toward the work area.
4. Regulatory and warning signs within the construction zone that are in conflict with the traffic control plans shall be removed or covered. All signs shall be restored upon completion of work.
5. Flaggers and/or police officers shall be in sight of each other or in direct communication at all times.
6. When required by the issuing office, the Contractor shall install a flashing arrow signal as shown on the traffic control plans.
7. All traffic lanes shall be a minimum of ten (10) feet wide.
8. All construction warning signs shall be promptly removed or covered whenever the message is not applicable or not in use.
9. Pavement markings and traffic signs shall be replaced upon completion of each phase of work.
10. Sign spacings and taper lengths shall be as shown on the traffic control plan.
11. Buffer and taper areas on approach to any work site shall be kept clear of vehicles and equipment.
12. Payment for Traffic Control and devices shall be considered incidental to the various contract items.
13. Construction Phasing is subject to Contractor's discretion with Engineer's approval.
14. The existing traffic signal system shall be kept operational during construction. Any relocation and/or adjustment work required shall be approved by the Engineer and paid for by the Contractor.
15. Tubular markers shall be predominantly orange and shall be 28 inches in height and 2 inches wide facing road users. They shall be made of a material that can be struck without causing damage to the impacting vehicle.

For nighttime use, tubular markers shall be retroreflectorized and provide two 3 inch white bands placed a maximum of 2 inches from the top with a maximum of 6 inches between the bands.

The manufacturer shall design the tubular marker anchor base to be bonded to the pavement.

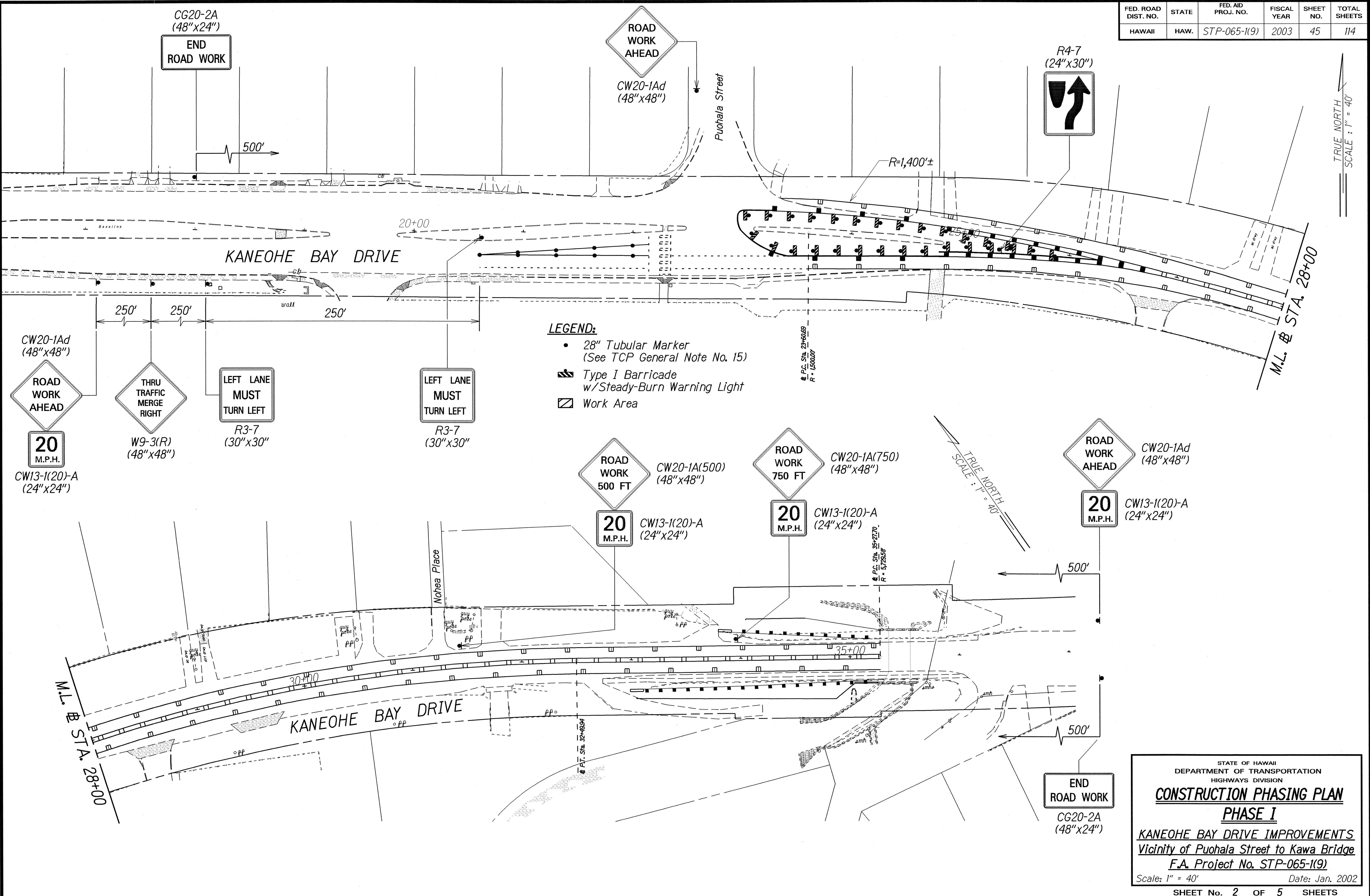
PHASE 1 - ELECTRICAL WORK NOTES

1. The Contractor shall coordinate with utility companies (HECO, Verizon Hawaii and Oceanic Cablevision) to install the new joint-use poles, guy wires and sidewalk guy wires. The Contractor shall install the new street lights on new joint-use poles.
2. The Contractor shall coordinate with HECO to energize new street lights.
3. The Contractor shall coordinate with HECO to de-energize the existing street lights to be removed, then remove the existing street lights.
4. The Contractor shall install the new telephone/CATV ductlines, handholes and pole risers near Station 24+50 and Station 29+00. The Contactor shall coordinate the work with Verizon Hawaii and Oceanic Cablevision.
5. The utility companies (HECO, Verizon Hawaii and Oceanic Cablevision) shall relocate existing and install new overhead and underground cables.
6. The Contractor shall coordinate with the utility companies (HECO, Verizon Hawaii and Oceanic Cablevision) to remove the existing joint-use/telephone poles and overhead cables scheduled by the utility companies for removal.
7. The Contractor shall install the new underground ductlines and pole risers between Stations 31+50 and 32+60, near the HECO Puohala substation after installation of the joint-use poles. Contractor shall coordinate all work with HECO.
8. HECO shall install the new cables in the newly constructed ductlines. The Contractor shall coordinate scheduling of HECO's work.
10. HECO shall remove the existing cables in the existing ductlines to be abandoned in place. Existing abandoned ductlines may be cut or removed for installation of new storm drain lines upon completion of HECO's work.

ORIGINAL PLAN	SURVEY PLOTTED BY DATE
NOTES BOOK	10/23/01
DESIGNED BY 10/23/01	
QUANTITIES BY 10/23/01	
CHECKED BY 10/23/01	

STATE OF HAWAII DEPARTMENT OF TRANSPORTATION HIGHWAYS DIVISION
CONSTRUCTION PHASING NOTES AND TABLE
KANEQHE BAY DRIVE IMPROVEMENTS Vicinity of Puohala Street to Kawa Bridge F.A. Project No. STP-065-1(9) Date: Jan. 2002
SHEET No. 1 OF 5 SHEETS

FED. ROAD DIST. NO.	STATE	FED. AID PROJ. NO.	FISCAL YEAR	SHEET NO.	TOTAL SHEETS
HAWAII	HAW.	STP-065-1(9)	2003	45	114



DESIGNED BY	DATE
TRACED BY	
NOTED BY	
CHECKED BY	

STATE OF HAWAII
DEPARTMENT OF TRANSPORTATION
HIGHWAYS DIVISION

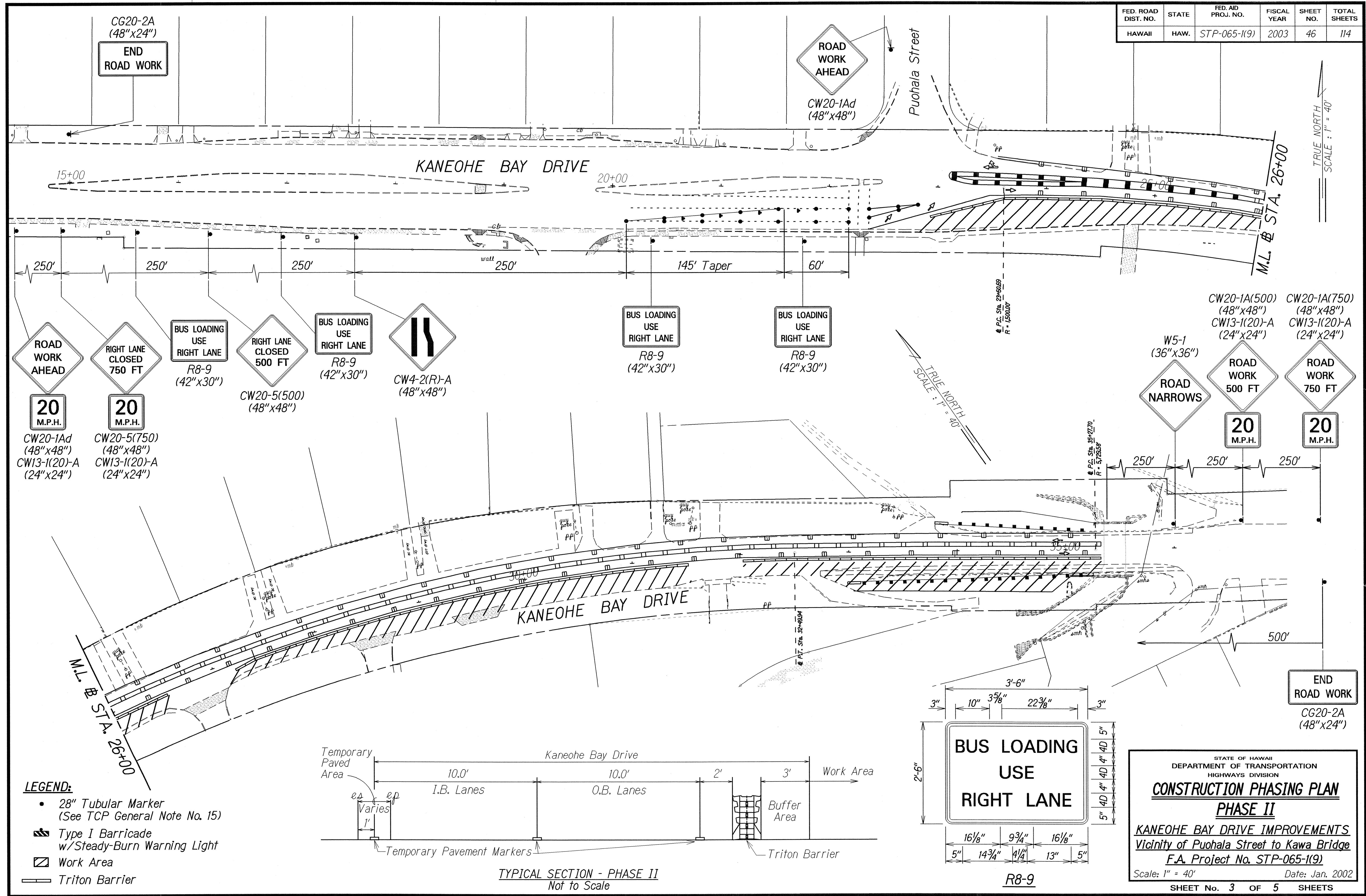
CONSTRUCTION PHASING PLAN
PHASE I

KANEOHE BAY DRIVE IMPROVEMENTS
Vicinity of Puuhala Street to Kawa Bridge
F.A. Project No. STP-065-1(9)

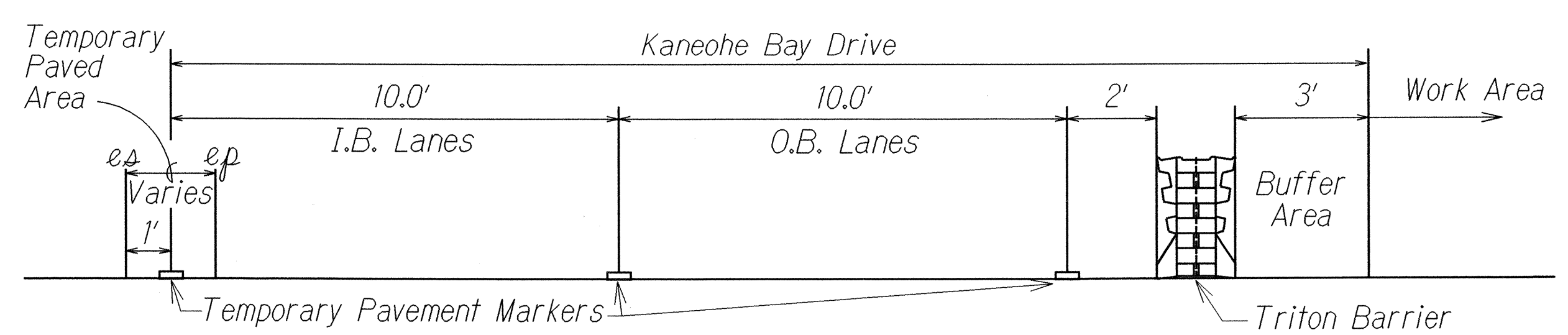
Scale: 1" = 40' Date: Jan. 2002

SHEET No. 2 OF 5 SHEETS

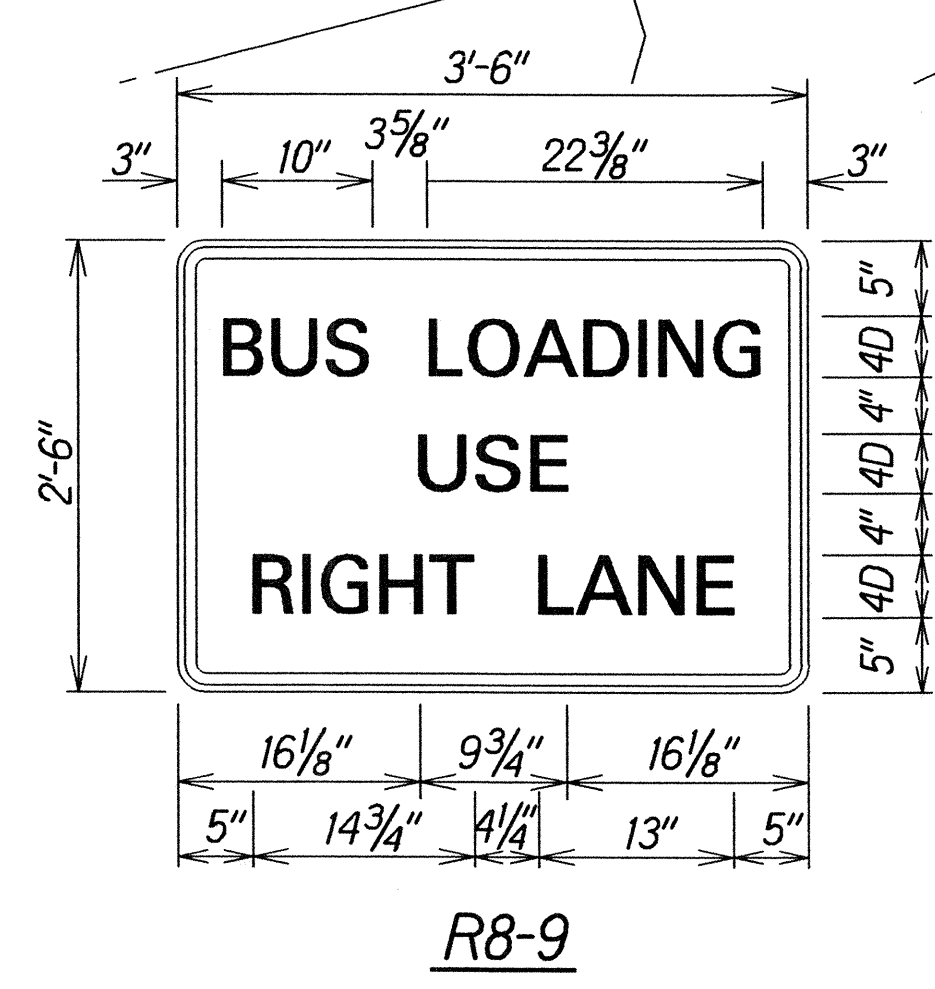
FED. ROAD DIST. NO.	STATE	FED. AID PROJ. NO.	FISCAL YEAR	SHEET NO.	TOTAL SHEETS
HAWAII	HAW.	STP-065-1(9)	2003	46	114



- LEGEND:**
- 28" Tubular Marker (See TCP General Note No. 15)
 - Type I Barricade w/Steady-Burn Warning Light
 - Work Area
 - Triton Barrier



TYPICAL SECTION - PHASE II
Not to Scale



STATE OF HAWAII
DEPARTMENT OF TRANSPORTATION
HIGHWAYS DIVISION

CONSTRUCTION PHASING PLAN
PHASE II

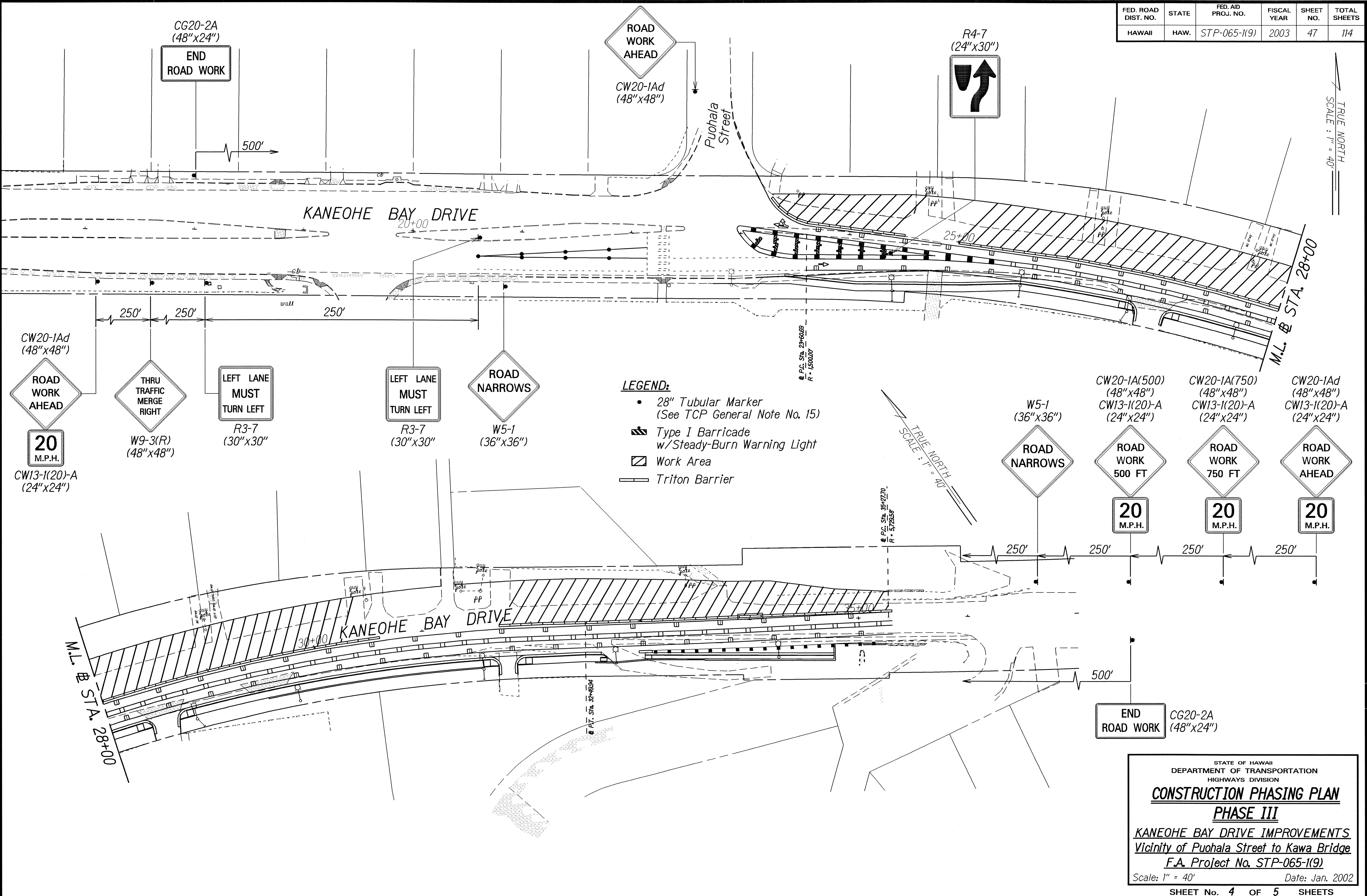
Kaneohe Bay Drive Improvements
Vicinity of Puuhala Street to Kawa Bridge
F.A. Project No. STP-065-1(9)

Scale: 1" = 40' Date: Jan. 2002

SHEET No. 3 OF 5 SHEETS

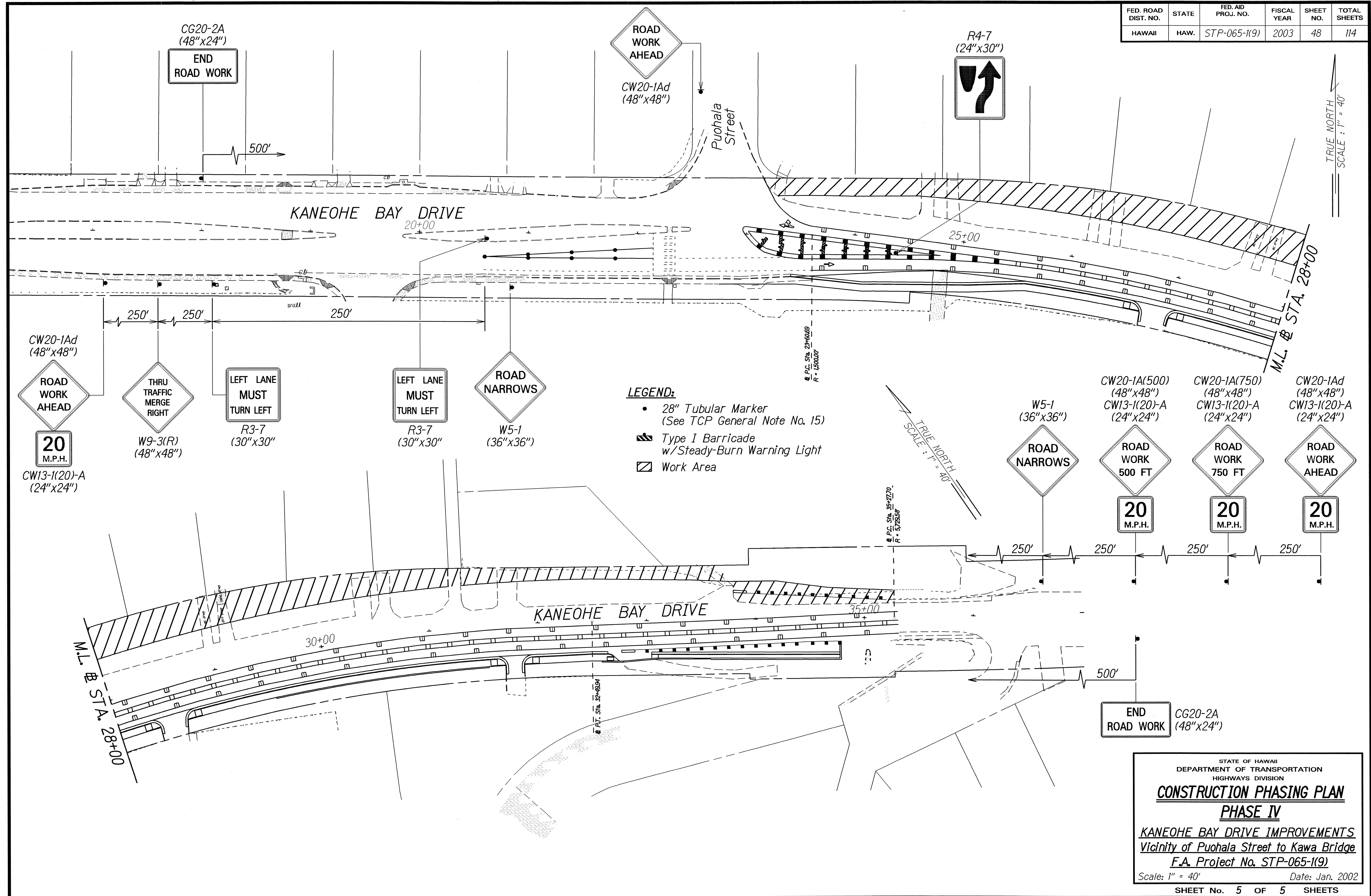
ORIGINAL PLAN	DATE
SURVEY PLOTTED BY	DATE
DRAWN BY	DATE
NOTED BY	DATE
DESIGNED BY	DATE
QUANTITIES BY	DATE
CHECKED BY	DATE

FED. ROAD DIST. NO.	STATE	FED. AID PROJ. NO.	FISCAL YEAR	SHEET NO.	TOTAL SHEETS
HAWAII	HAW.	STP-065-1(9)	2003	47	114



ORIGINAL PLAN	DATE
DESIGNED BY	8/23/01
DRAWN BY	
CHECKED BY	
NOTES	
REVISIONS	

FED. ROAD DIST. NO.	STATE	FED. AID PROJ. NO.	FISCAL YEAR	SHEET NO.	TOTAL SHEETS
HAWAII	HAW.	STP-065-1(9)	2003	48	114



DESIGNED BY	DATE
DRAWN BY	8/23/01
CHECKED BY	
NOTED BY	
QUANTITIES BY	
ORIGINAL PLAN	

STATE OF HAWAII
DEPARTMENT OF TRANSPORTATION
HIGHWAYS DIVISION

CONSTRUCTION PHASING PLAN
PHASE IV

KANEOHE BAY DRIVE IMPROVEMENTS
Vicinity of Puohala Street to Kawa Bridge
F.A. Project No. STP-065-1(9)

Scale: 1" = 40' Date: Jan. 2002

SHEET No. 5 OF 5 SHEETS