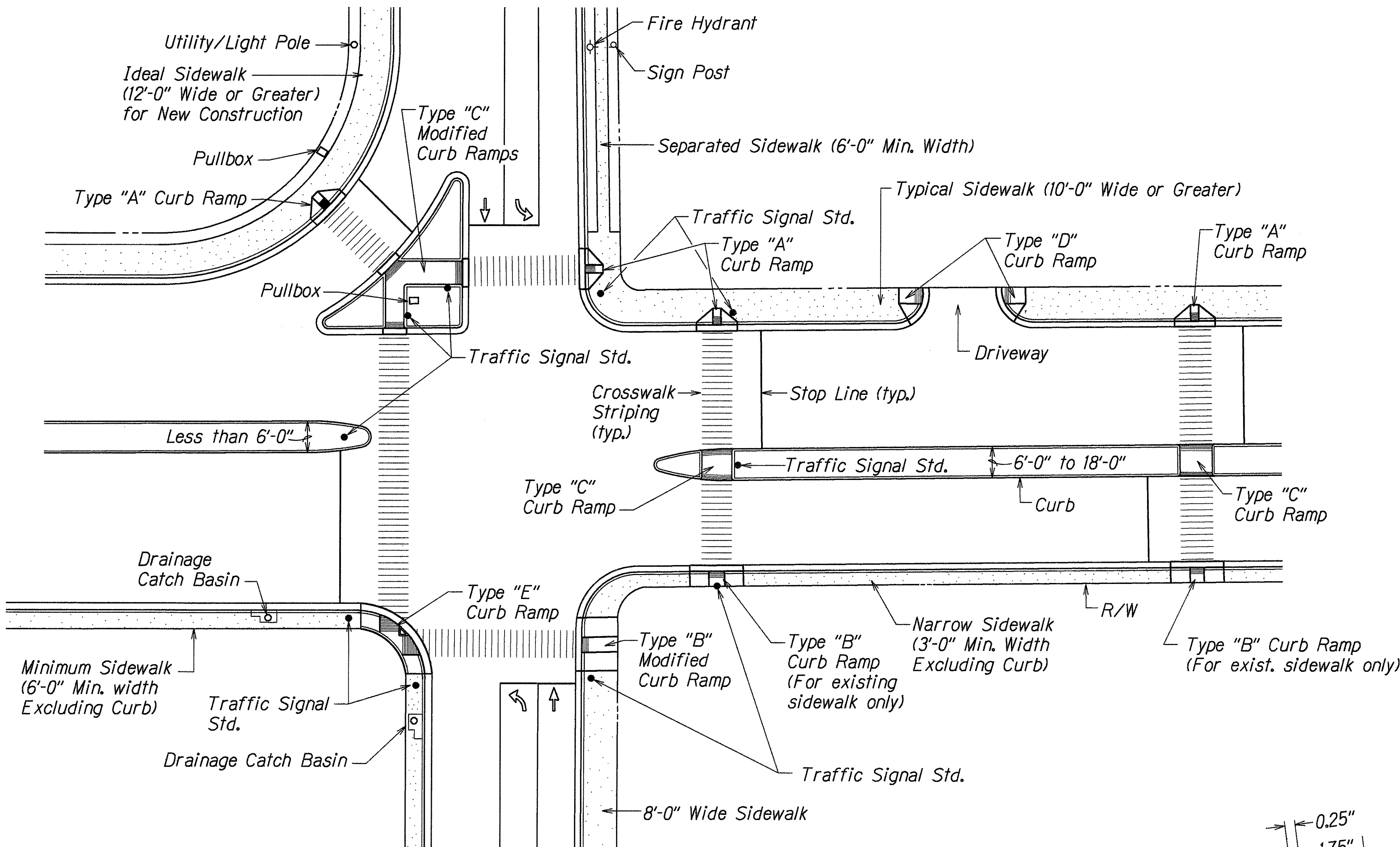


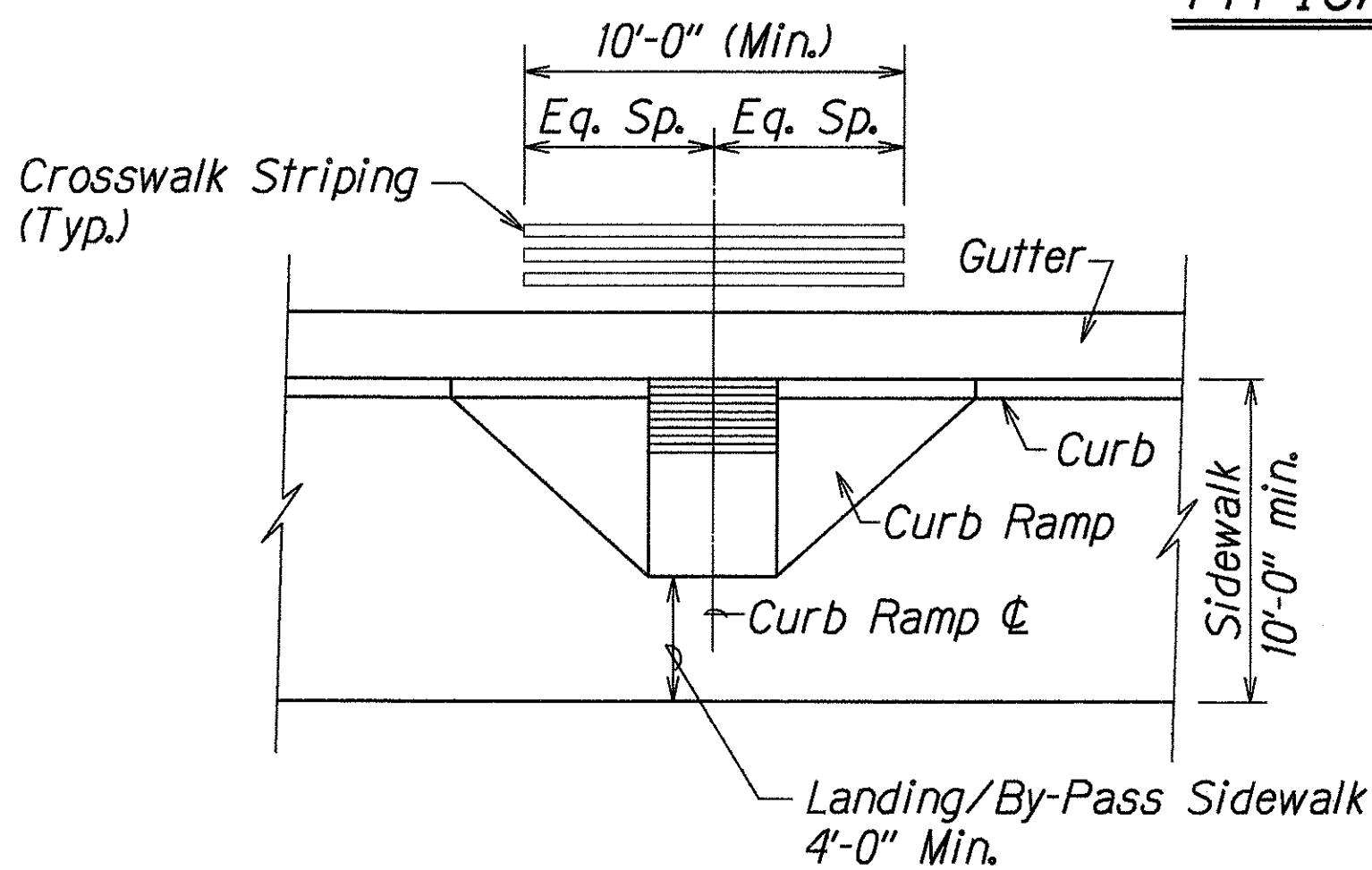
FED. ROAD DIST. NO.	STATE	FED. AID PROJ. NO.	FISCAL YEAR	SHEET NO.	TOTAL SHEETS
HAWAII	HAW.	STP-065-1(7)	2000	6	22

GENERAL NOTES:

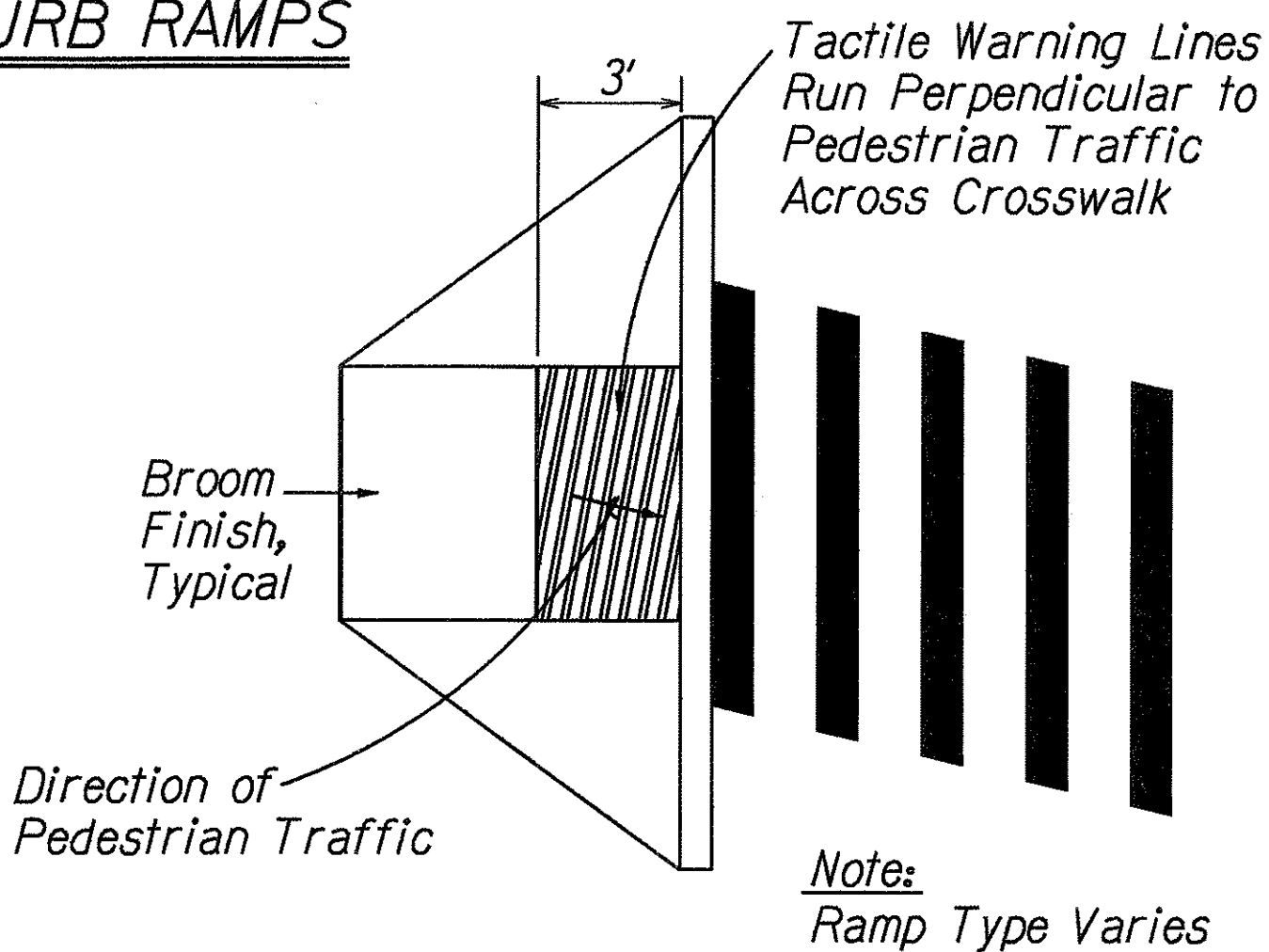
- When necessitated by existing physical conditions, alternate Curb Ramps may be used subject to Engineer's approval.
- Subject to field conditions, the Engineer shall determine final location of Curb Ramp.
- Where necessary, pullboxes, handholes, manholes, etc. shall be adjusted to match Curb Ramp grade. Adjustments shall not be paid for separately but shall be considered incidental to the various wheelchair items.
- All sidewalks shall provide a minimum clear width of 3'-0" (excluding curb) for pedestrian circulation.
- Narrow Sidewalks (3'-0" min. width excluding curb) will prohibit the installation of any sign posts, utility poles, fire hydrants, traffic signals standards, light poles, etc. in the sidewalk, which will prevent a 3'-0" wide clear zone for pedestrian circulation. Also, Narrow Sidewalks shall require a minimum 6'-0" wide, excluding curbs, by 10'-0" long passing space at intervals not to exceed 200 feet.
- For New Construction, the minimum sidewalk width shall be 6'-6", excluding curbs at signalized intersections and the cross slope shall not exceed 50:1. Sidewalk width may be decreased to 6'-0" excluding curbs at non-signalized intersections. For high pedestrian traffic the width shall be a minimum of 12'-0" and/or determined by the Engineer.
- If possible, install utility poles, fire hydrants, light poles, sign posts, pullboxes, etc. off of sidewalk but within the right-of-way.
- Single curb ramps serving two street crossing directions is prohibited in new construction.
- New Curb Ramps shall be installed at 90° to the sidewalk.
- Objects protruding from utility poles and walls adjacent to the sidewalks (i.e. wall mounted fire hydrants, telephones, meters on poles etc.) shall be mounted to meet the current American with Disabilities Act (ADA) Accessibility Guidelines and will be subject to Engineer's approval.
- Removal of existing curb ramps shall not be paid for separately but shall be considered incidental to various curb ramp items.



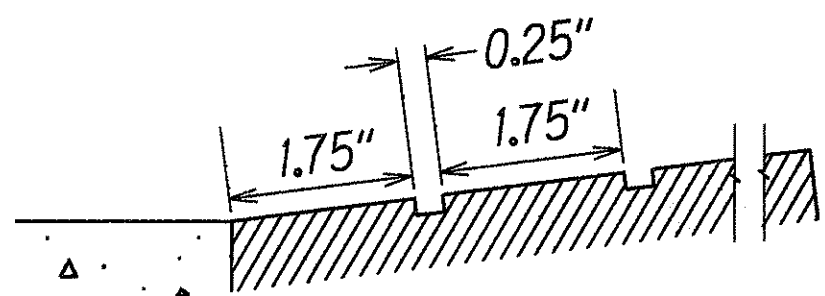
TYPICAL CURB RAMPS



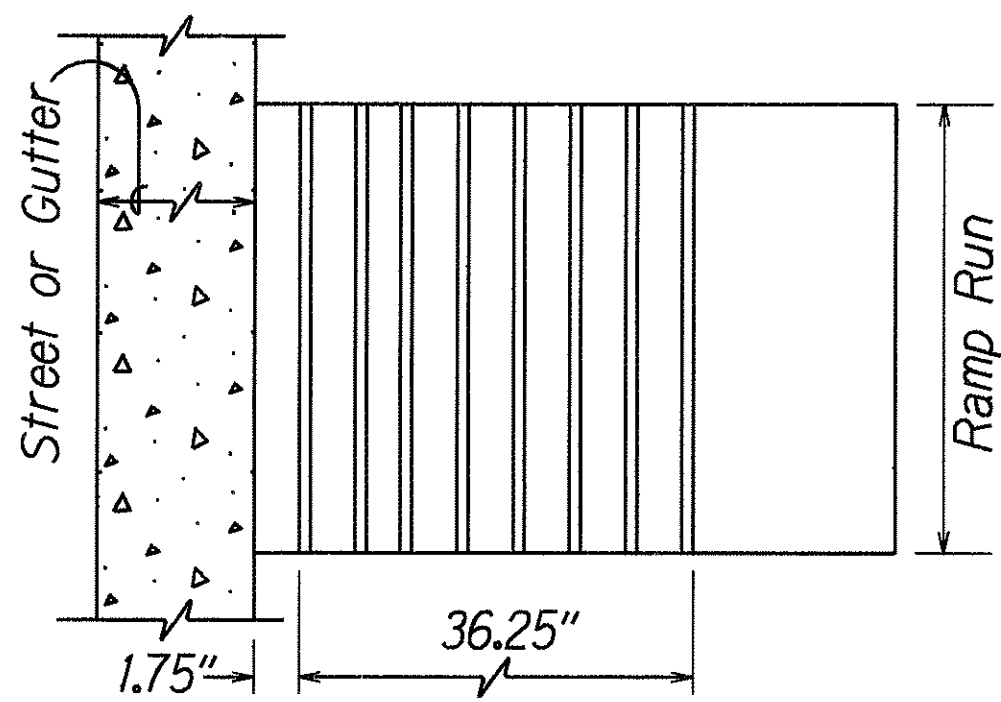
TYPICAL CROSSWALK STRIPING
AT CURB RAMP



GROOVED TACTILE WARNING SIGNAL



ELEVATION



PLAN

STATE OF HAWAII
DEPARTMENT OF TRANSPORTATION
HIGHWAYS DIVISION

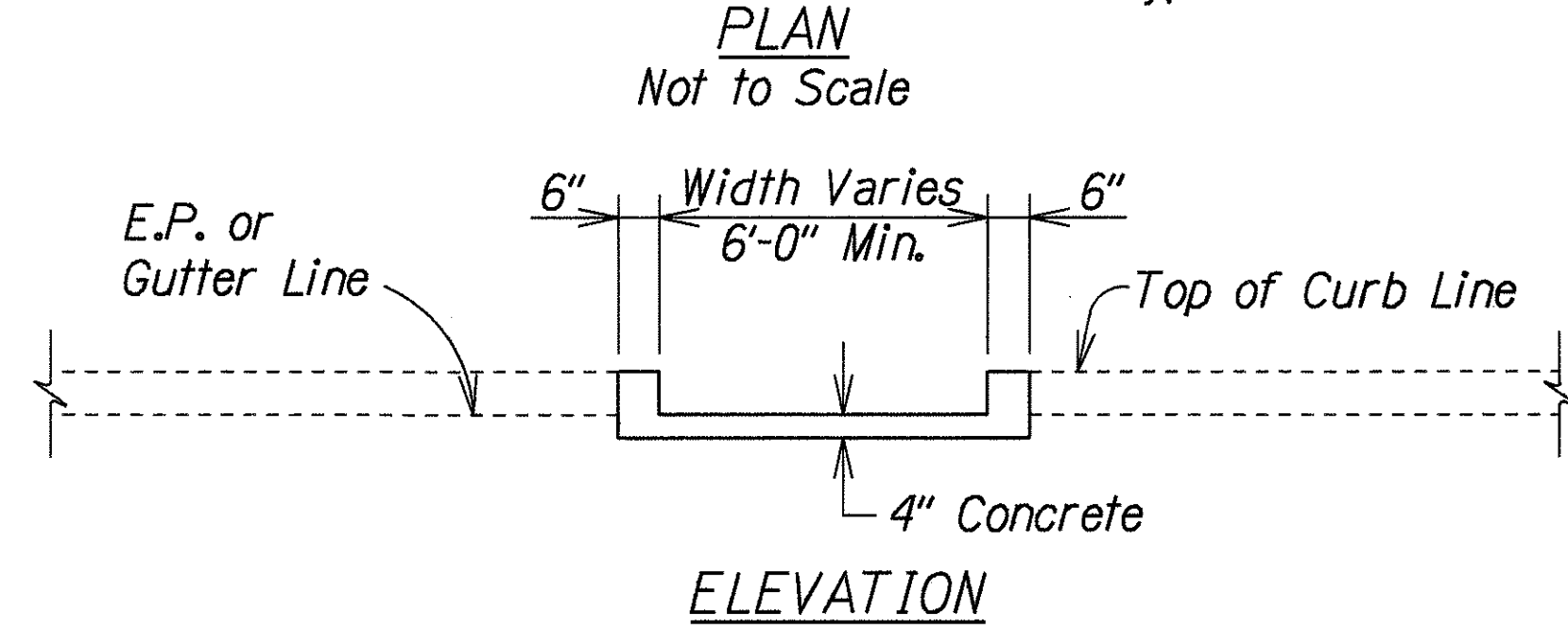
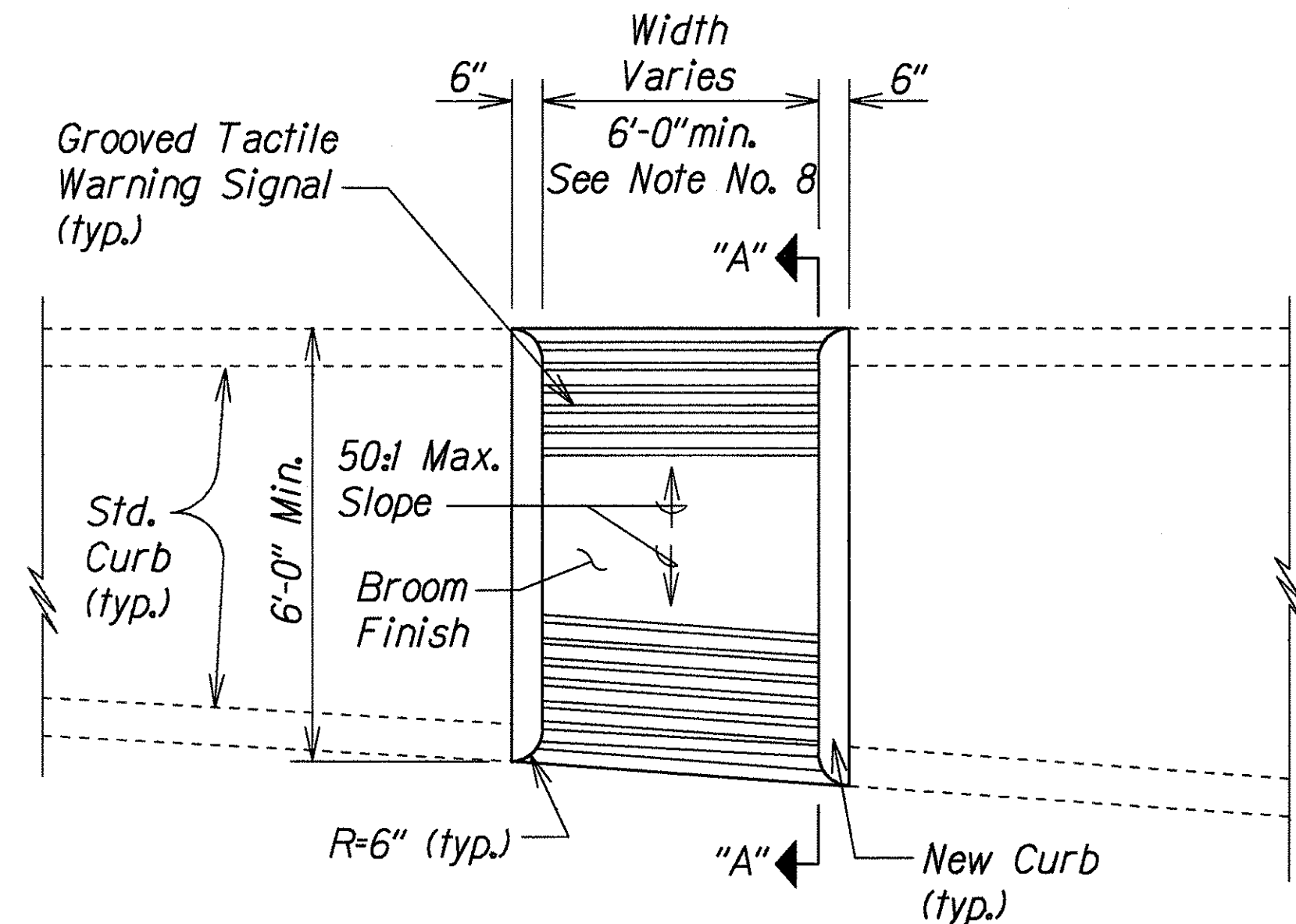
CURB RAMP DETAIL
MOKAPU SADDLE ROAD
Traffic Signals at Kaneohe Bay Drive
Fed. Aid Project No. STP-065-1(7)

Not to Scale
Date: June, 1999

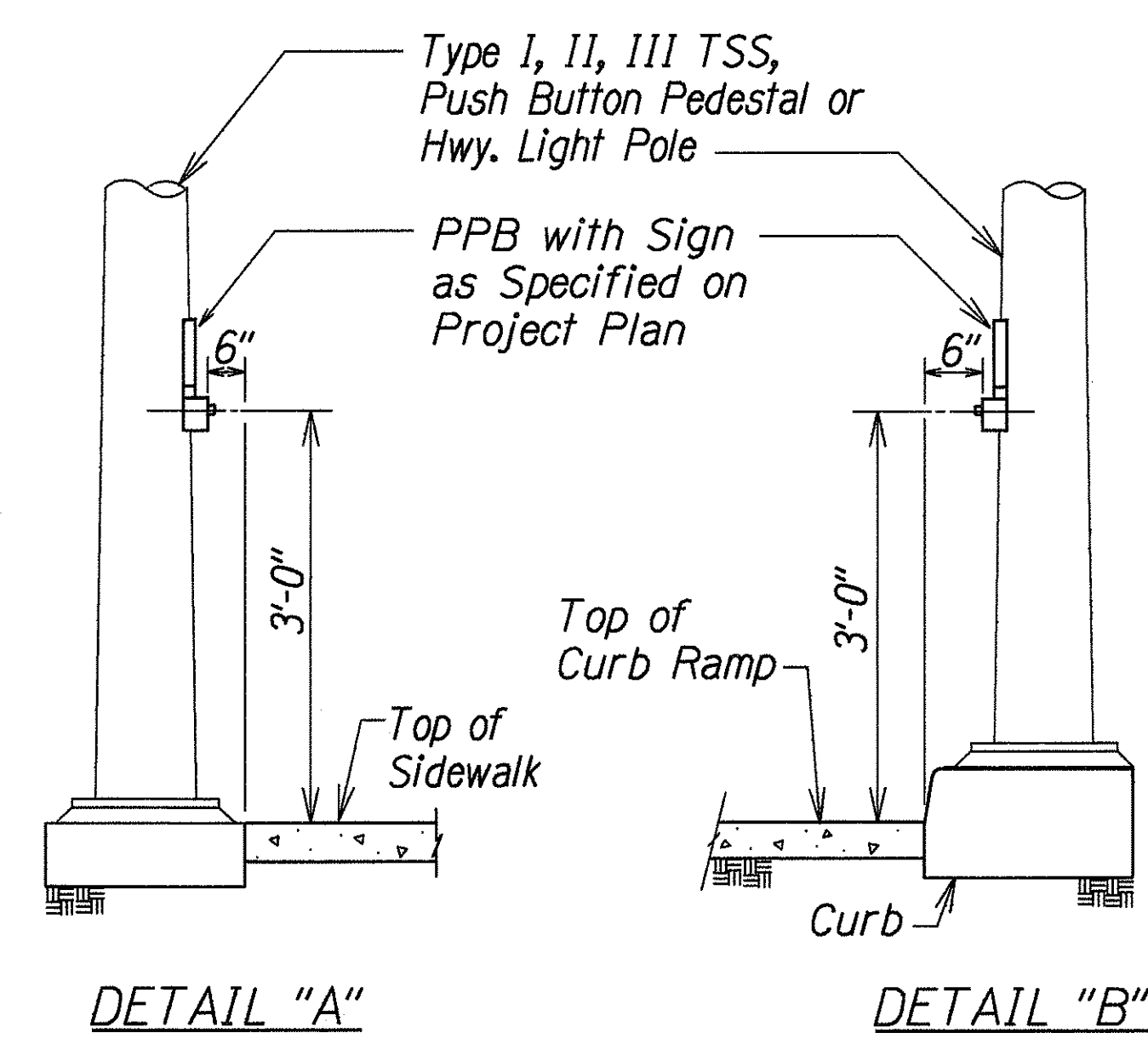
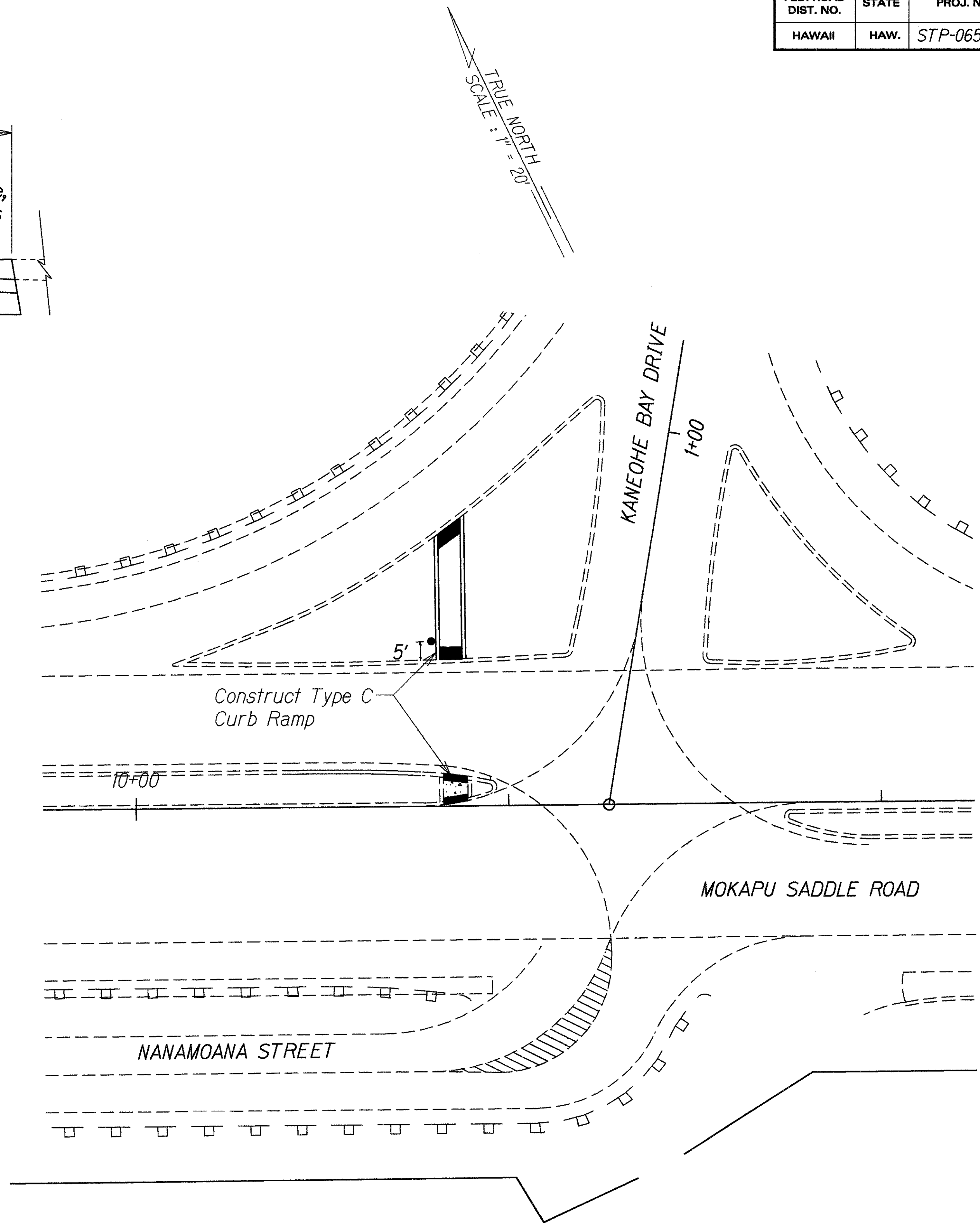
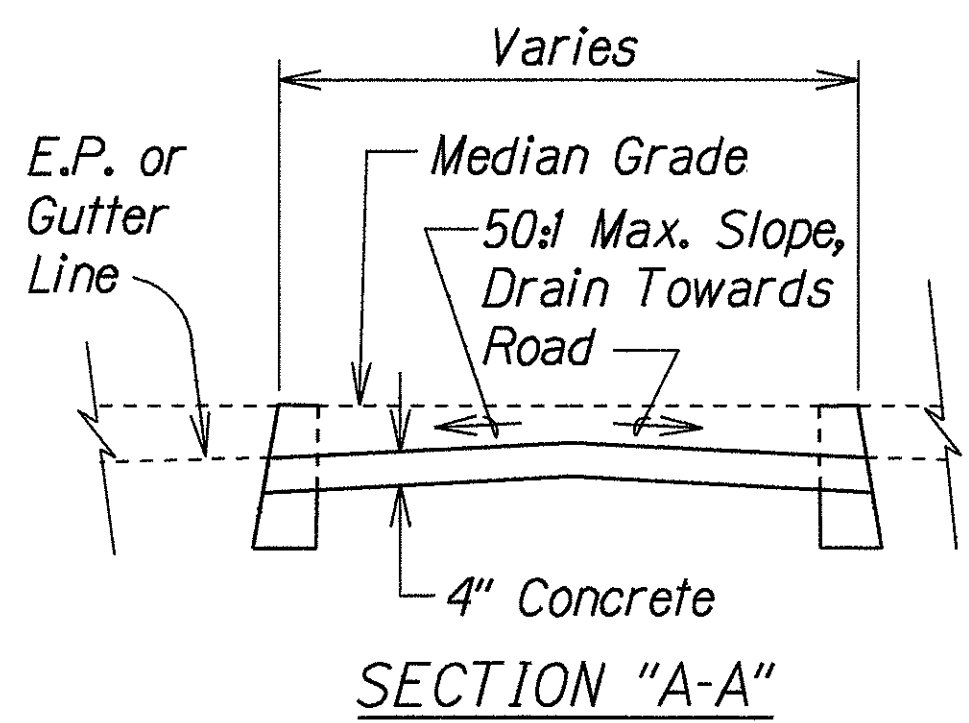
SHEET No. 1 OF 2 SHEETS

ORIGINAL PLAN	DATE
SURVEY PLOTTED BY	
DRAWN BY	
DESIGNED BY	
QUANTITIES BY	
CHECKED BY	
NOTED BY	
NOTES	

FED. ROAD DIST. NO.	STATE	FED. AID PROJ. NO.	FISCAL YEAR	SHEET NO.	TOTAL SHEETS
HAWAII	HAW.	STP-065-1(7)	2000	7	22



CURB RAMP - TYPE "C"
USE AT MEDIAN CROSSINGS, ISLANDS
Not to Scale



Not to Scale

ORIGINAL PLAN	DATE
DESIGNED BY	
DRAWN BY	
CHECKED BY	
NOTED BY	
QUANTITIES BY	
REVISIONS	

STATE OF HAWAII
DEPARTMENT OF TRANSPORTATION
HIGHWAYS DIVISION

CURB RAMP DETAIL

MOKAPU SADDLE ROAD
Traffic Signals at Kaneohe Bay Drive
Fed. Aid Project No. STP-065-1(7)

Not to Scale Date: June, 1999

SHEET No. 2 OF 2 SHEETS