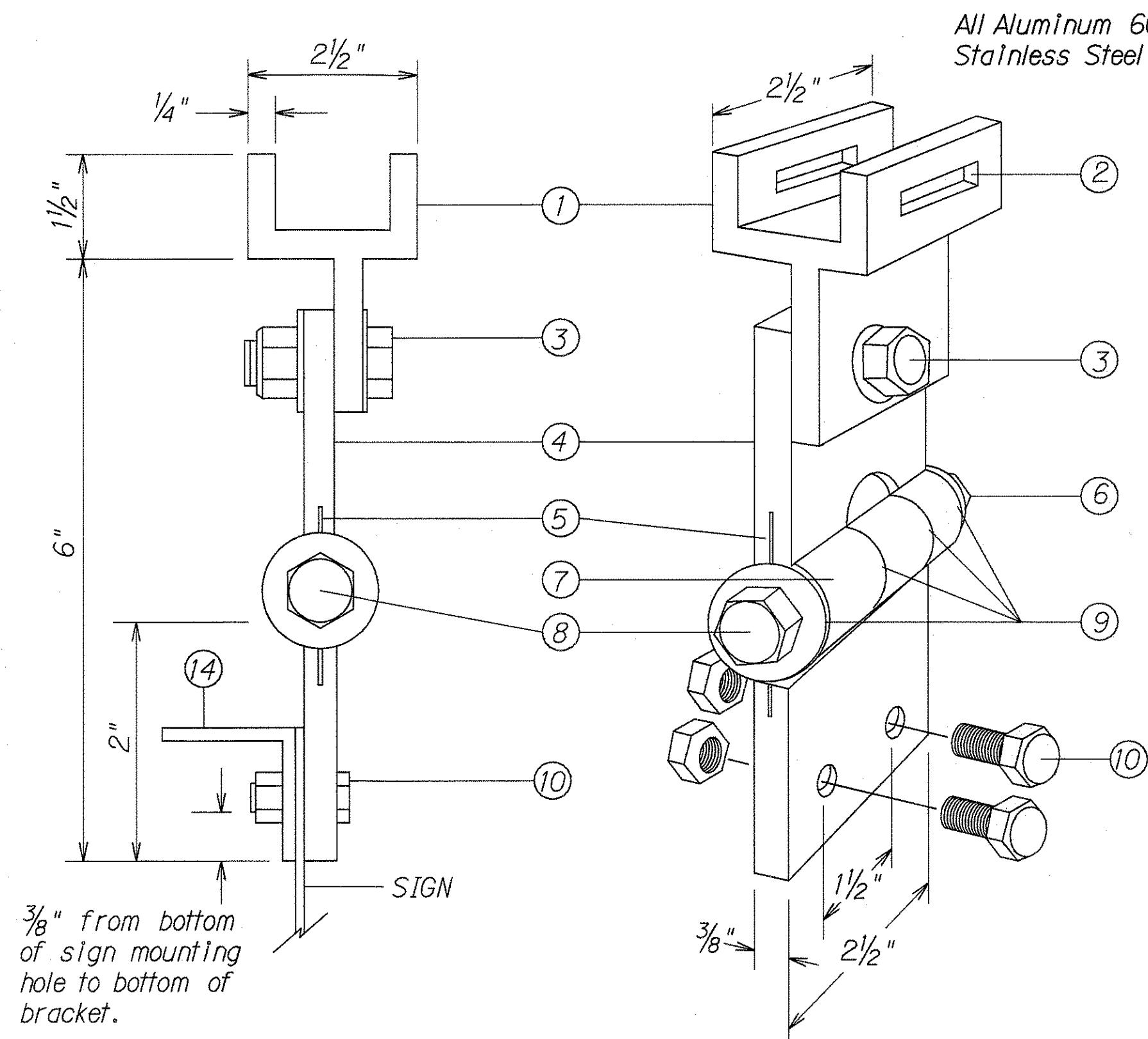


FED. ROAD DIST. NO.	STATE	FED. AID PROJ. NO.	FISCAL YEAR	SHEET NO.	TOTAL SHEETS
HAWAII	HAW.	STP-065-1(4)	1995	9	10

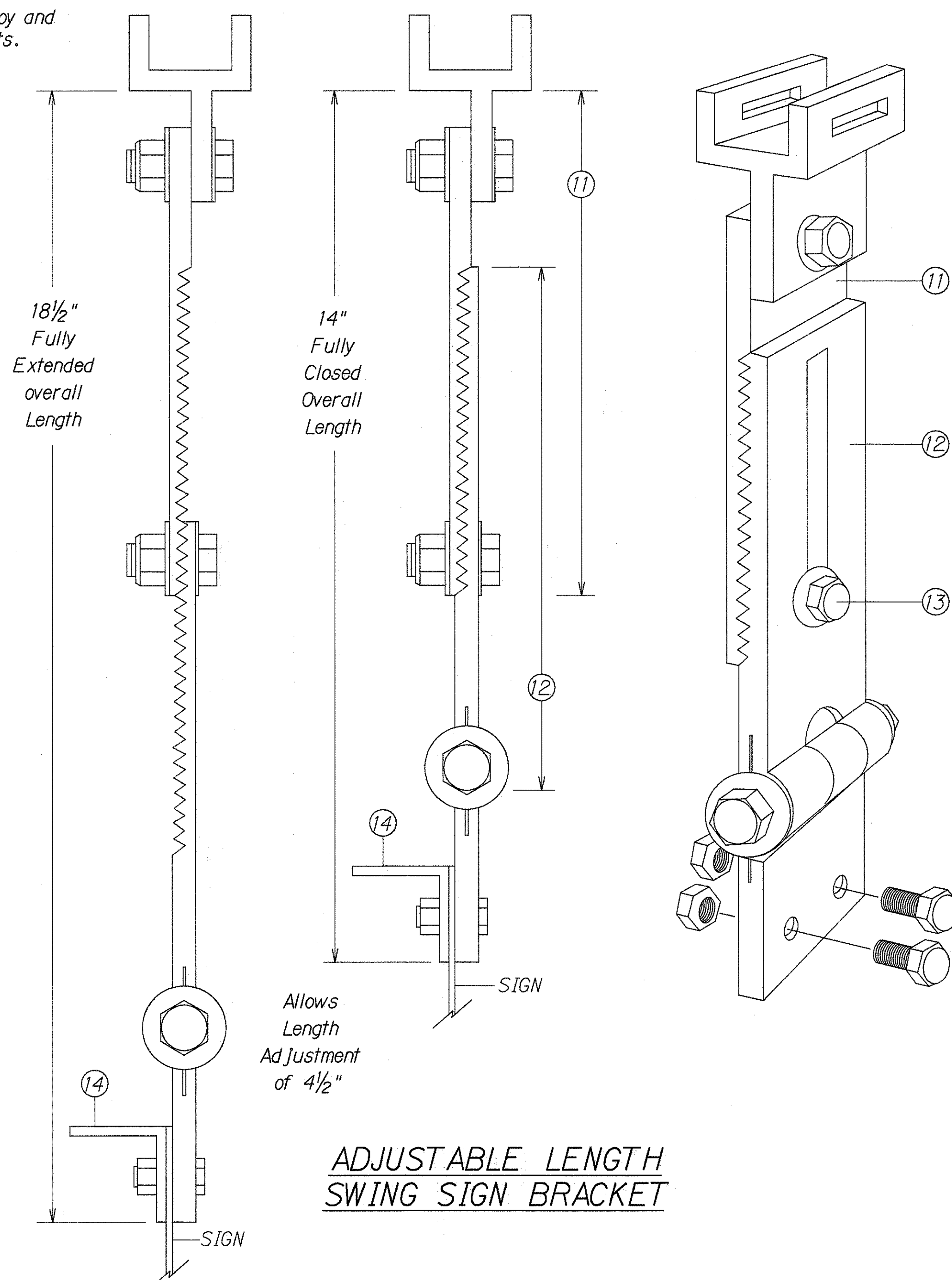


FIXED LENGTH NON-ADJUSTABLE SWING SIGN BRACKET

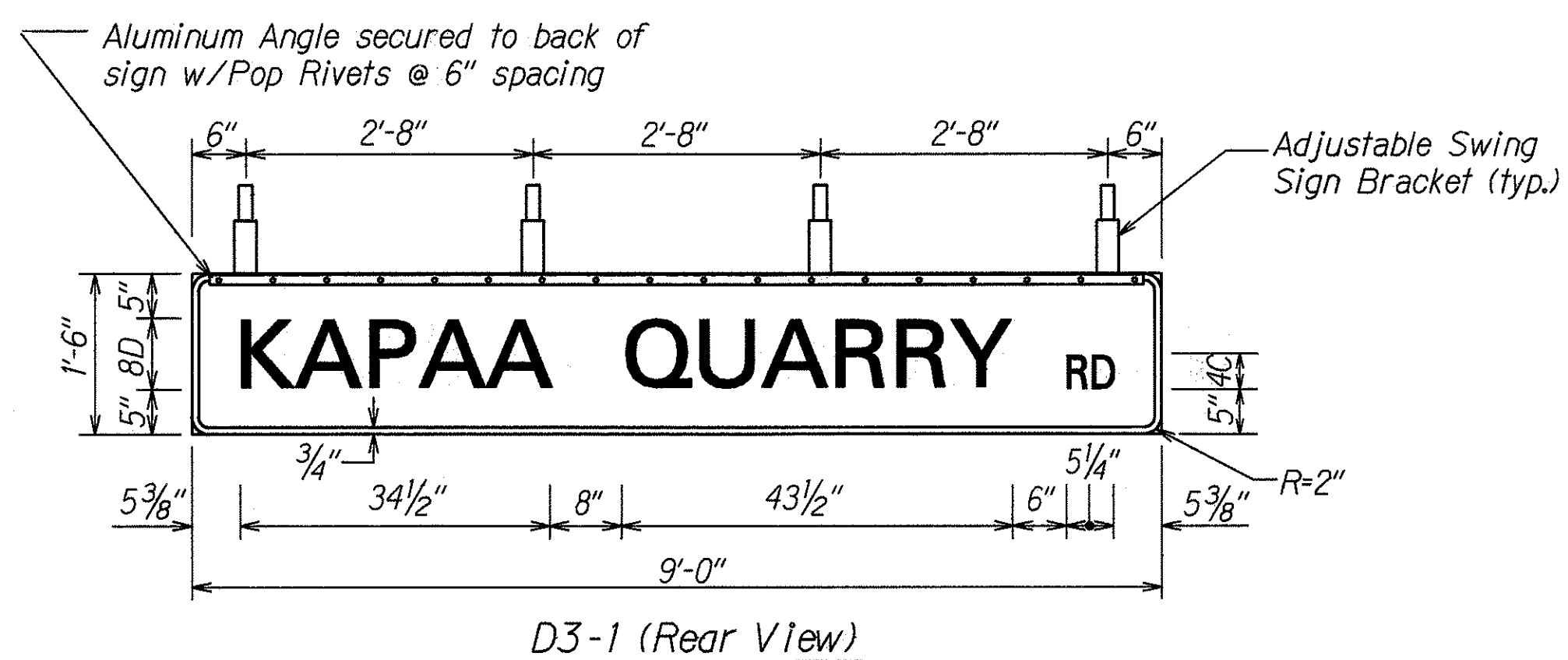
- ① Pivotal Upper Bracket
- ② 1 5/8" x 1/4" Slot for double strapping to electrolier mast arm. (M2G-34S(HD) .030" x 3/4" Heavy Duty Stainless Steel Strap with M2G-34B(HD) Buckle recommended.)
- ③ 1/2" - 13 x 1 1/2" Stainless Steel Hex Head Bolt with Stainless Steel Hex Lock Nut and 1/16" Stainless Steel Washer (both sides). Allows upper bracket to pivot and align with electrolier mast arm.
- ④ 6" Overall drop with Fixed Length Sign Bracket
- ⑤ Stainless Steel Damper Spring (Removable)
- ⑥ Stainless Steel Hex Lock Nut with 1/16" Stainless Steel Washer
- ⑦ 1" O.D. Axle Housing
- ⑧ 1/2" - 13 x 4" Stainless Steel Hex Head Bolt with 1/16" Stainless Steel Washer
- ⑨ O.I.I.I.te Bushing
- ⑩ Sign Mounting Sets, consisting of two each 5/16" - 18 x 1" Stainless Steel Hex Head Bolt with Stainless Steel Hex Lock Nut. Two holes on 1 1/2" centers provide positive lock sign mounting to bracket.
- ⑪ 8 1/4" overall length Upper Adjustable Sign Bracket section
- ⑫ 9" overall length Lower Adjustable Sign Bracket section, including Axle Housing (8" overall length to top of Axle Housing)
- ⑬ 1/2" - 13 x 1 1/2" Stainless Steel Hex Bolt with Stainless Steel Hex Lock Nut and 1/16" Stainless Steel Washers (both sides). Loosen lock nut, adjust bracket teeth to level sign.
- ⑭ 1 1/4" x 1 1/4" x 1/8" Aluminum Angle

Note: Dimensions may vary slightly.

All Aluminum 6061T6 Alloy and Stainless Steel Components.



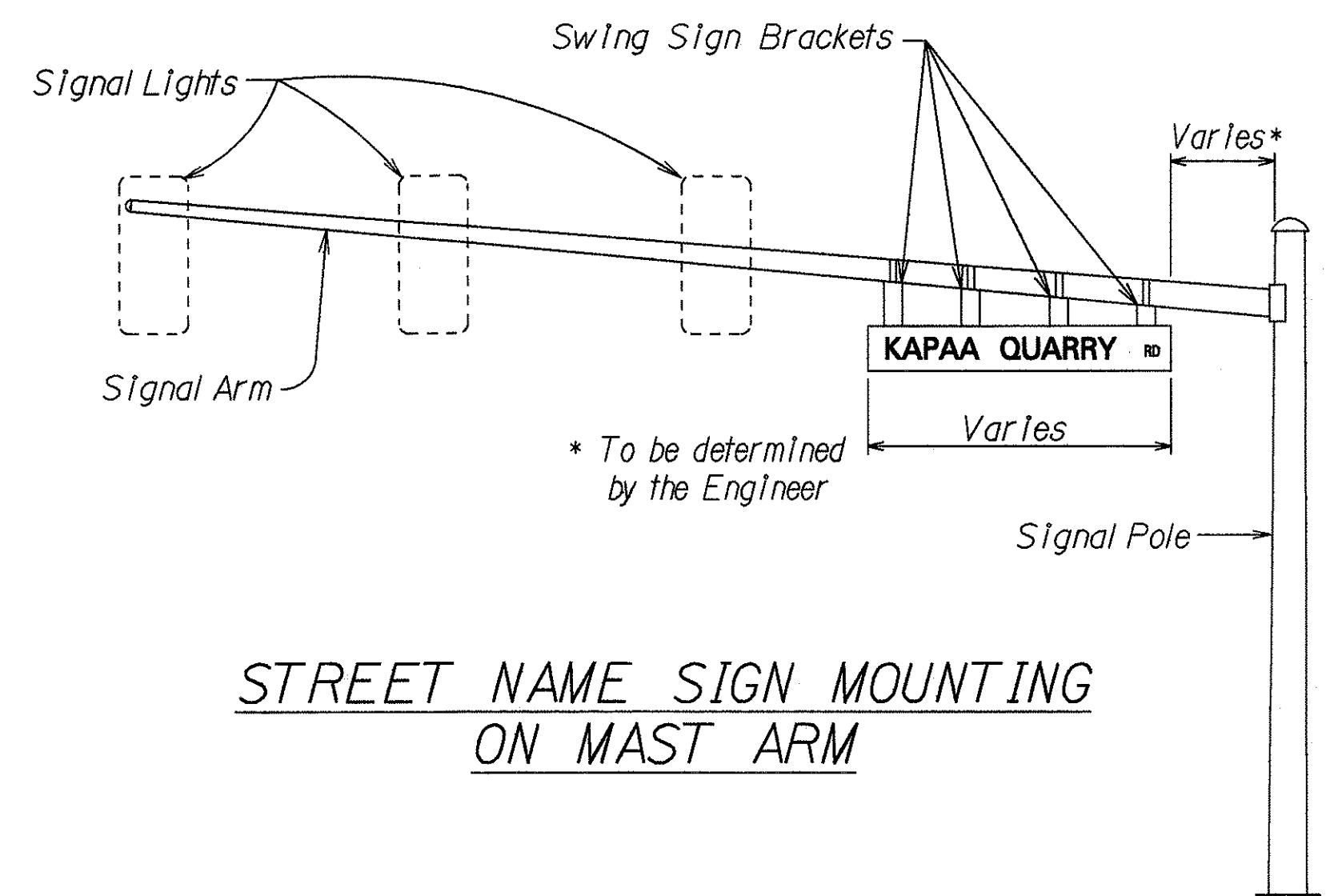
ADJUSTABLE LENGTH SWING SIGN BRACKET



TYPICAL PANEL & SWING BRACKET LAYOUT FOR STREET NAME SIGN

NOTES:

1. Sign D3-1 shall be new Street Name Sign. The Contractor shall provide the same message on the front and back side of the sign. Payment will not be made separately but shall be considered as one unit.
2. Colors:
Legend - White (Reflectorized)
Background - Green (Reflectorized)
3. All panels shall be reflectorized with Type B reflective sheeting in accordance with Section 712.20 of the Standard Specifications.
4. Borders and messages shall conform to details as shown on the plans and as specified in the MUTCD.
5. Sign mounting brackets, aluminum angle, fixtures, fasteners, and all necessary hardware, and equipment, tools, labor, materials and other incidentals for installation, will not be paid for separately but shall be considered incidental to street name sign installation.
6. All signs shall conform to section 621 of the Standard Specifications and the latest editions and amendments of the following FHWA publications:
a. "Manual on Uniform Traffic Control Devices for Streets and Highways" (MUTCD)
b. "Standard Highway Signs"
c. "Standard Alphabets for Highway Signs"



STREET NAME SIGN MOUNTING ON MAST ARM

STATE OF HAWAII
DEPARTMENT OF TRANSPORTATION
HIGHWAYS DIVISION

SWING SIGN BRACKET DETAIL

MOKAPU SADDLE ROAD

Traffic Signals at Kapaa Quarry Road

Fed. Aid Project No. STP-065-1(4)

Not to Scale Date: Apr., 1995

SHEET No. 1 OF 1 SHEETS