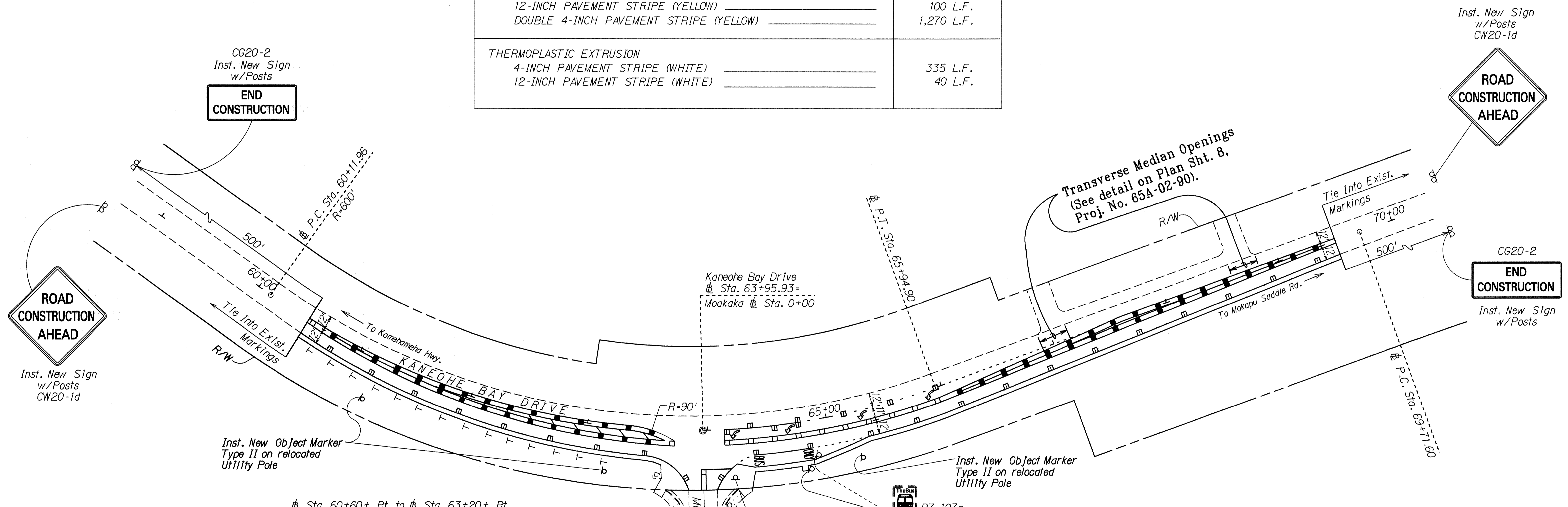


| | | | | | |
|---------------------|-------|-----------|-------------|-----------|--------------|
| FED. ROAD DIST. NO. | STATE | PROJ. NO. | FISCAL YEAR | SHEET NO. | TOTAL SHEETS |
| HAWAII | HAW. | 65A-03-90 | 1992 | 7 | 10 |

| PAVEMENT MARKING SUMMARY | |
|--|------------|
| DESCRIPTION | QUANTITY |
| PAVEMENT MARKERS | |
| TYPE CL _____ | 31 EA. |
| TYPE DL _____ | 15 EA. |
| TYPE HL _____ | 60 EA. |
| TAPE - TYPE I OR THERMOPLASTIC EXTRUSION | |
| 4-INCH PAVEMENT STRIPE (WHITE) _____ | 50 L.F. |
| 8-INCH PAVEMENT STRIPE (WHITE) _____ | 65 L.F. |
| DOUBLE 4-INCH PAVEMENT STRIPE (YELLOW) _____ | 260 L.F. |
| PAVEMENT ARROW _____ | 4 EA. |
| PAVEMENT WORD _____ | 2 EA. |
| TAPE - TYPE II OR THERMOPLASTIC EXTRUSION | |
| 4-INCH PAVEMENT STRIPE (WHITE) _____ | 930 L.F. |
| 12-INCH PAVEMENT STRIPE (YELLOW) _____ | 100 L.F. |
| DOUBLE 4-INCH PAVEMENT STRIPE (YELLOW) _____ | 1,270 L.F. |
| THERMOPLASTIC EXTRUSION | |
| 4-INCH PAVEMENT STRIPE (WHITE) _____ | 335 L.F. |
| 12-INCH PAVEMENT STRIPE (WHITE) _____ | 40 L.F. |



| LEGEND FOR AS-BUILT POSTINGS | |
|------------------------------|-------------------------------------|
| | Squiggly line for as-built deletion |
| | Double line for as-built deletion |
| | Text for as-built posting |

STATE OF HAWAII
DEPARTMENT OF TRANSPORTATION
HIGHWAYS DIVISION

PAVEMENT MARKING & SIGNING PLAN

KANEHOE BAY DRIVE
Intersection Improvements at Moakaka Pl.
Project No. 65A-03-90

Scale: 1" = 40' Date: Dec. 1991
SHEET No. T2 OF 2 SHEETS

DATE: _____
SURVEY PLOTTED BY: _____
DRAWN BY: _____
NOTE BOOK DESIGNED BY: _____
QUANTITIES BY: _____
CHECKED BY: _____

Sta. 60+60± Rt. to Sta. 63+20± Rt.
Remove Exist. Delineators & Inst. 14 Reflector Markers (RM-1, White) w/Flexible Delineator Post (Type B).

R1-1 Relocate Exist. Sign w/New Post
Inst. Exist. St. Name Signs on New Post

R7-107a Relocate Exist. Sign w/New Post