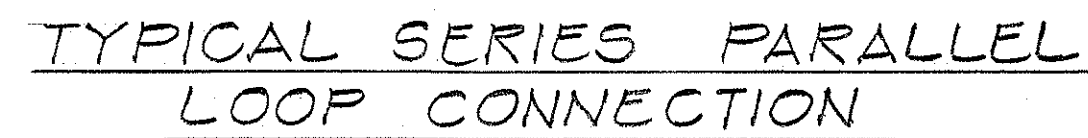
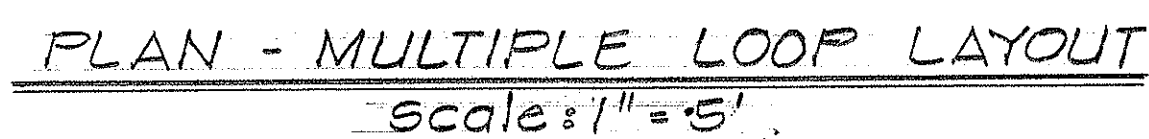


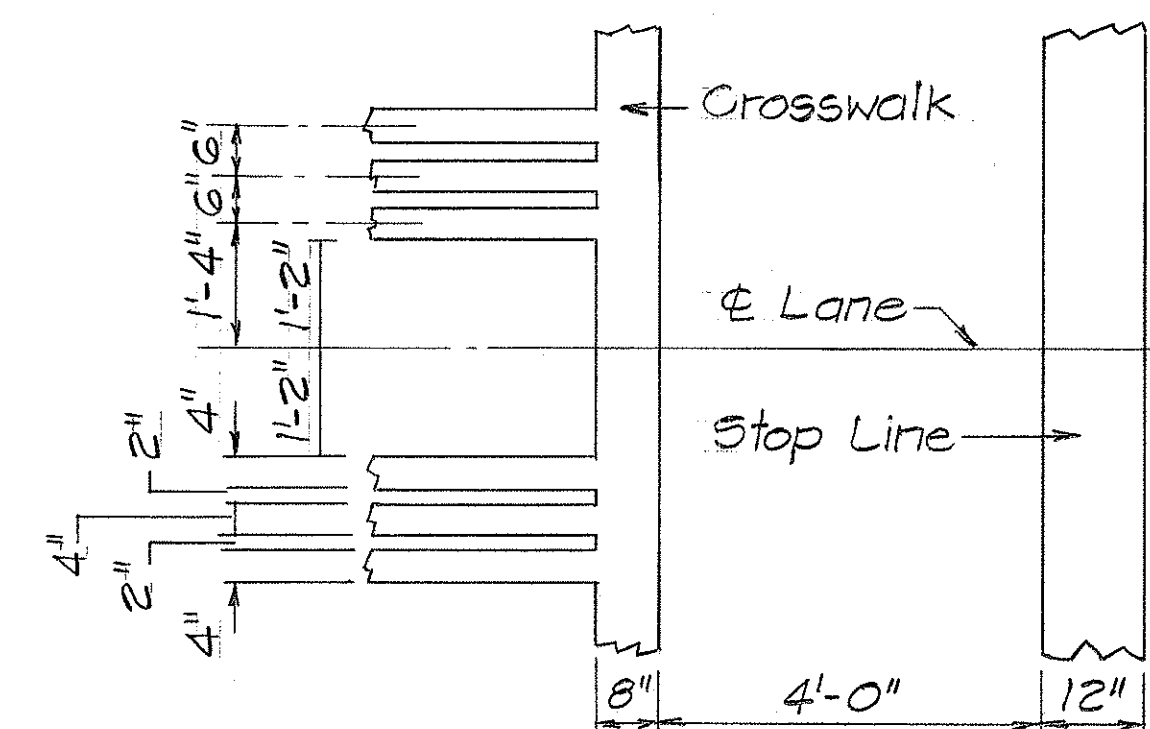
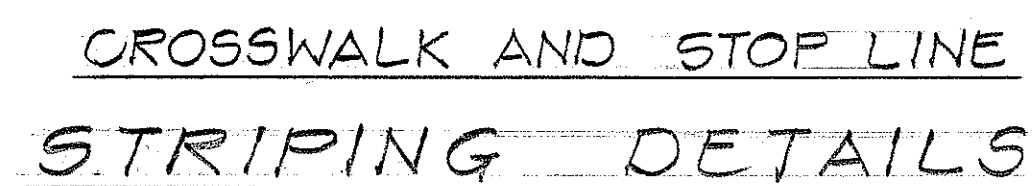
## CONSTRUCTION NOTES



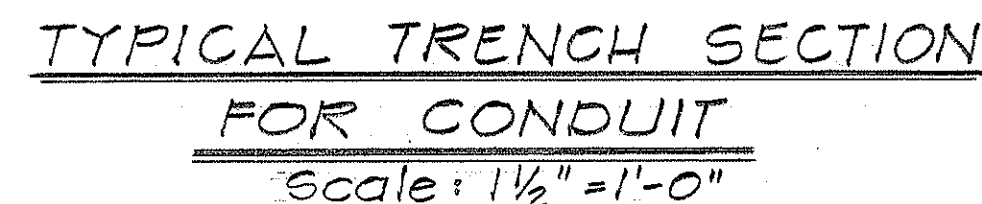
## TYPICAL LOOP CONFIGURATIONS



DETECTION LOOP  
Scale: as shown



CURB, TYPE 6  
BITUMINOUS CURB  
Scale:  $1\frac{1}{2}" = 1'-0"$



1. All conduits under roadways shall be steel or PVC schedule 80. All other conduits shall be steel or PVC schedule 40.

STATE OF HAWAII  
DEPARTMENT OF TRANSPORTATION  
HIGHWAYS DIVISION

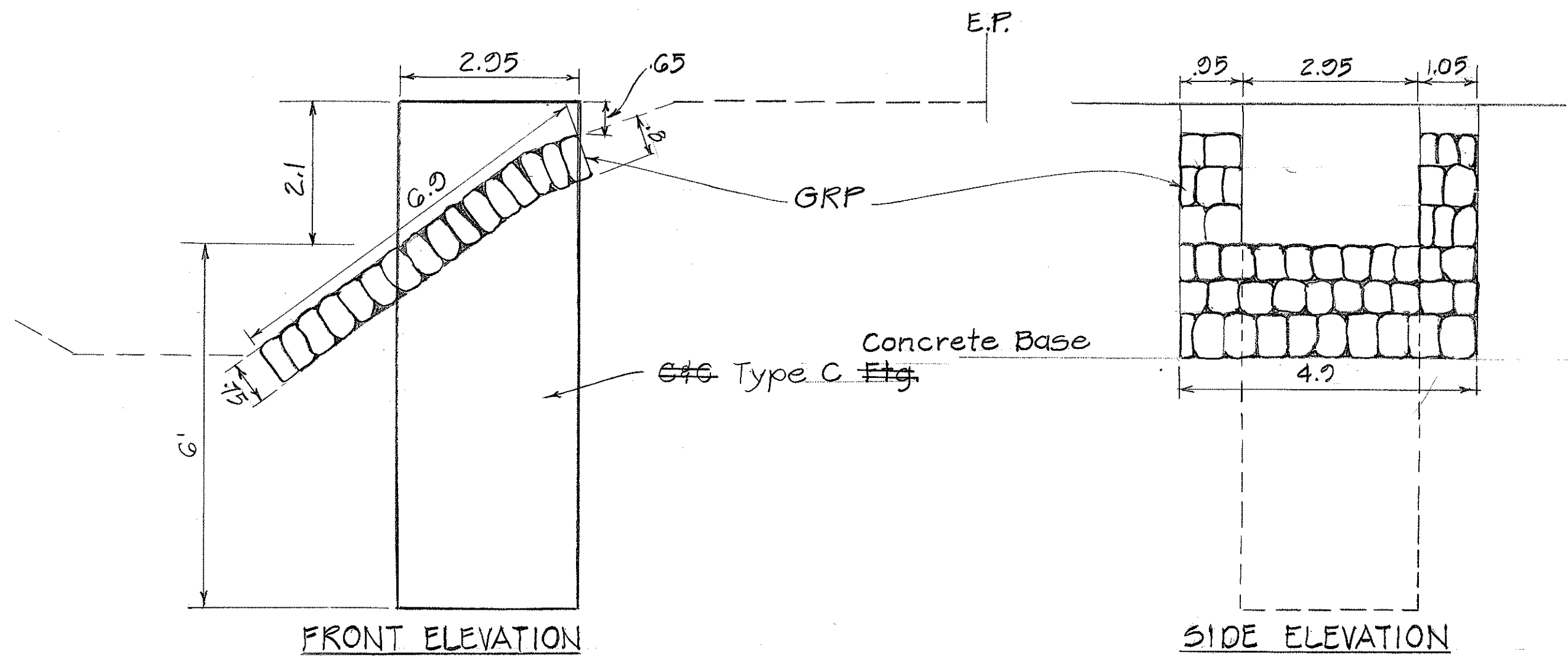
TRAFFIC SIGNAL SYSTEM  
MISCELLANEOUS DETAILS

PLAN No. U-0630 (12)

Scale: As Noted Date June 1975

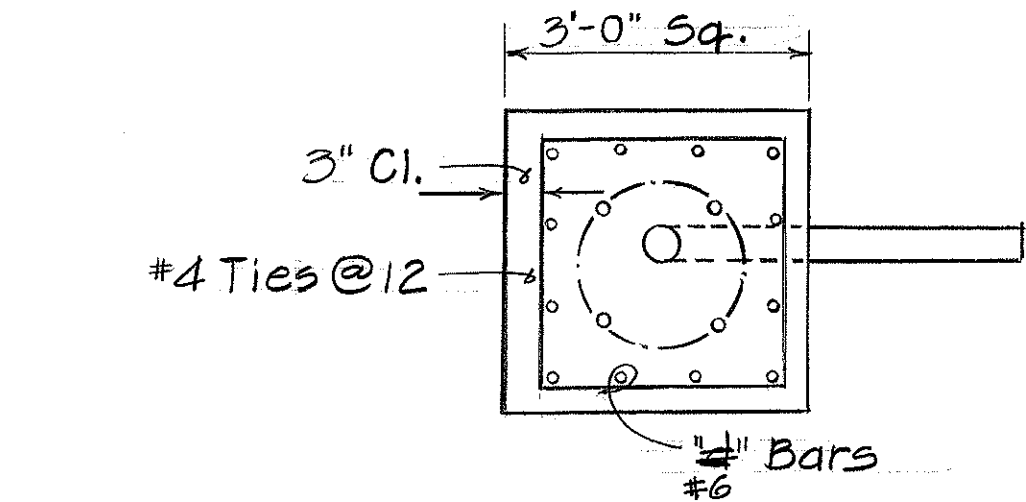
SHEET No. 1 OF 1 SHEETS

FED. ROAD DIST. NO.	STATE	FED. AID PROJ. NO.	FISCAL YEAR	SHEET NO.	TOTAL SHEETS
HAWAII	HAW.	U-0630(12)	1978	35-1	8



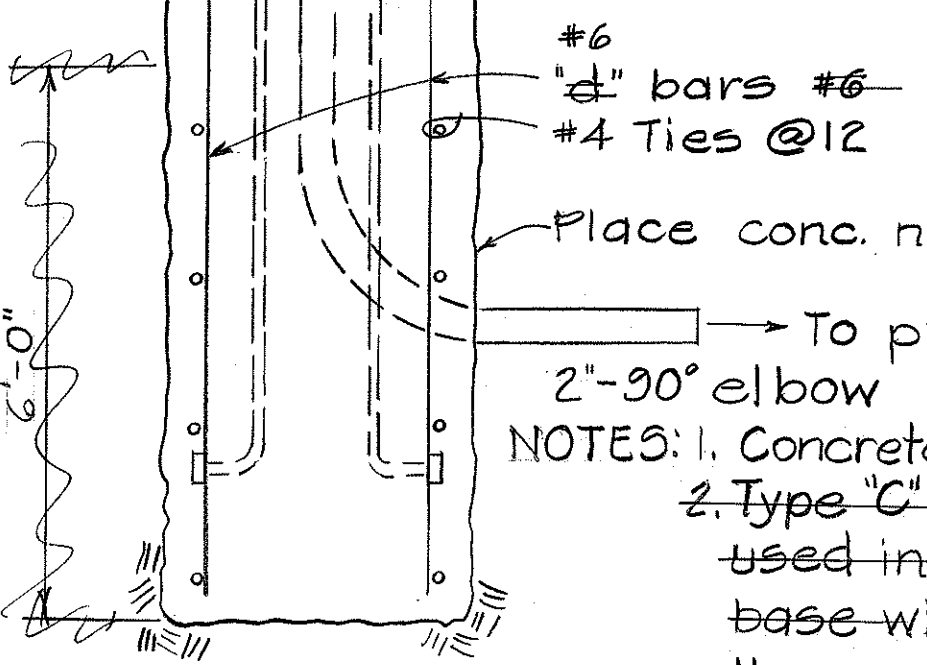
STANDARD "C"

REVISIONS TO FOUNDATIONS FOR  
STANDARDS C, D & E TRAFFIC SIGNALS  
ON KANEHOE BAY DRIVE AT MOKULELE  
DRIVE PROJECT NO. U-0630 (12)



PLAN - SECTION

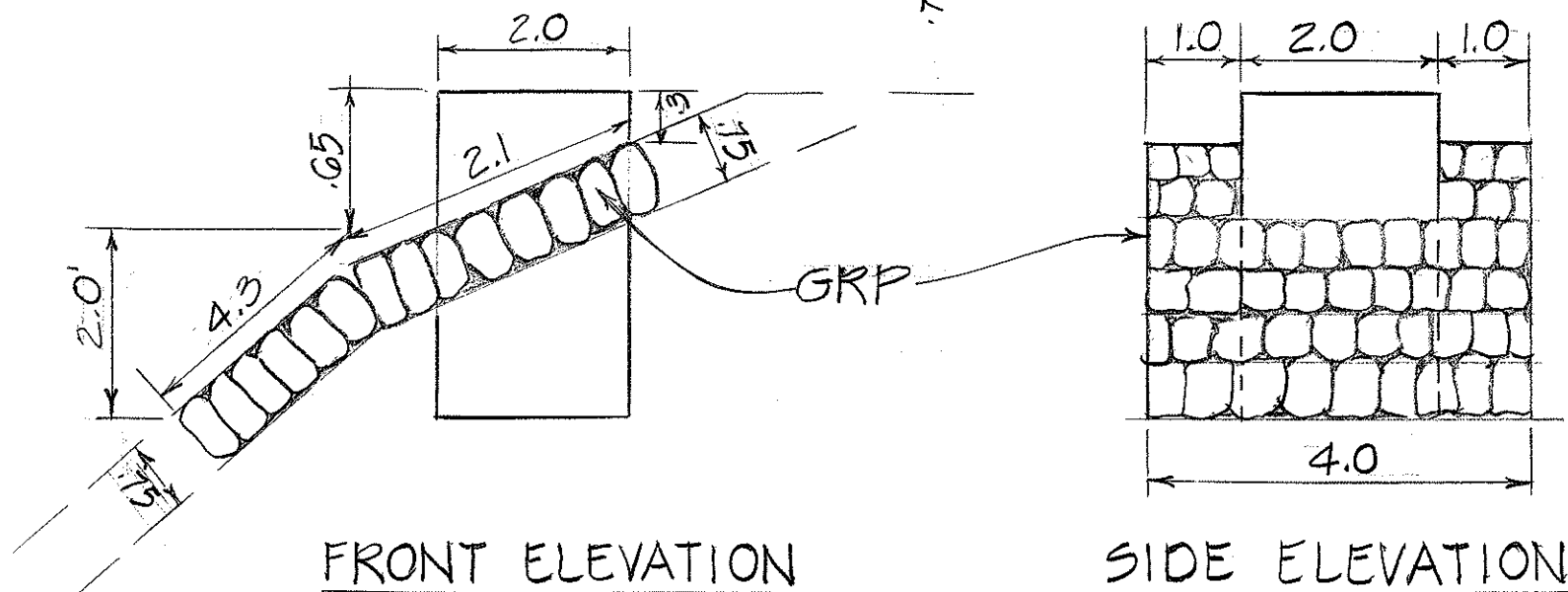
Grounding type  
bushing  
Fin. Grade  
Size and length of anchor bolts  
and diameter of bolt vary.  
See manufacturers literature.



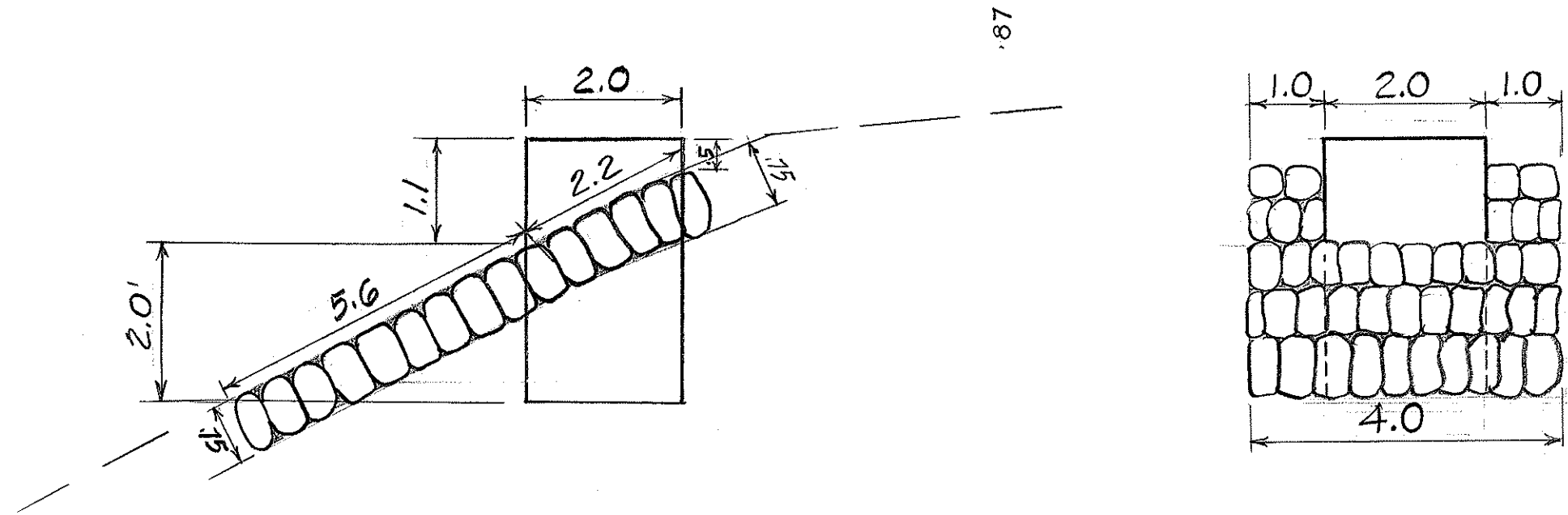
NOTES: 1. Concrete shall be Class "B".  
2. Type "C" conc. base may be  
used in lieu of Type "B"  
base with the approval of  
the engineer.  
3. Design lateral pressure =  
1,500 p.s.f.  
4. See TS-16 for dimensions  
and vertical reinforcing.

TYPE "C" CONCRETE BASE

NOTE:  
THIS TRACING PREPARED DURING "AS-BUILT" POSTING.



STANDARD "D"



STANDARD "E"

FOUNDATIONS FOR STANDARDS  
C, D & E TRAFFIC SIGNALS

ORIGINAL PLAN	SURVEY PLOTTED BY	DATE
NOTE BOOK	DRAWN BY	" "
	DESIGNED BY	" "
	QUANTITIES BY	" "
	CHECKED BY	" "

STATE OF HAWAII  
DEPARTMENT OF TRANSPORTATION  
LAND TRANSPORTATION FACILITIES DIVISION

MISCELLANEOUS DETAILS  
Proj. NO. U-0630(12)  
Scale: 1/2" = 1'      Date: 1978  
SHEET NO. 1 OF 1 SHEETS