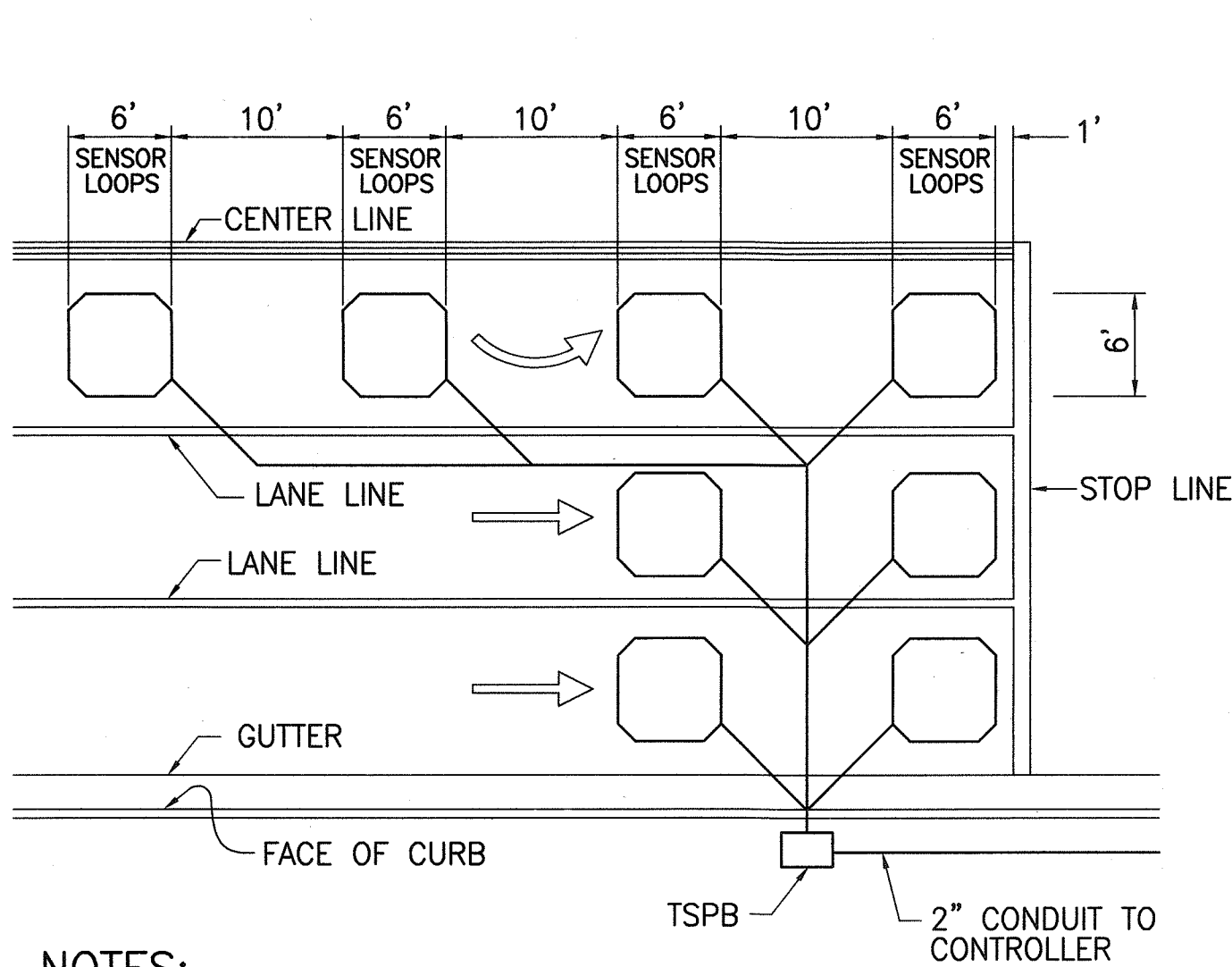
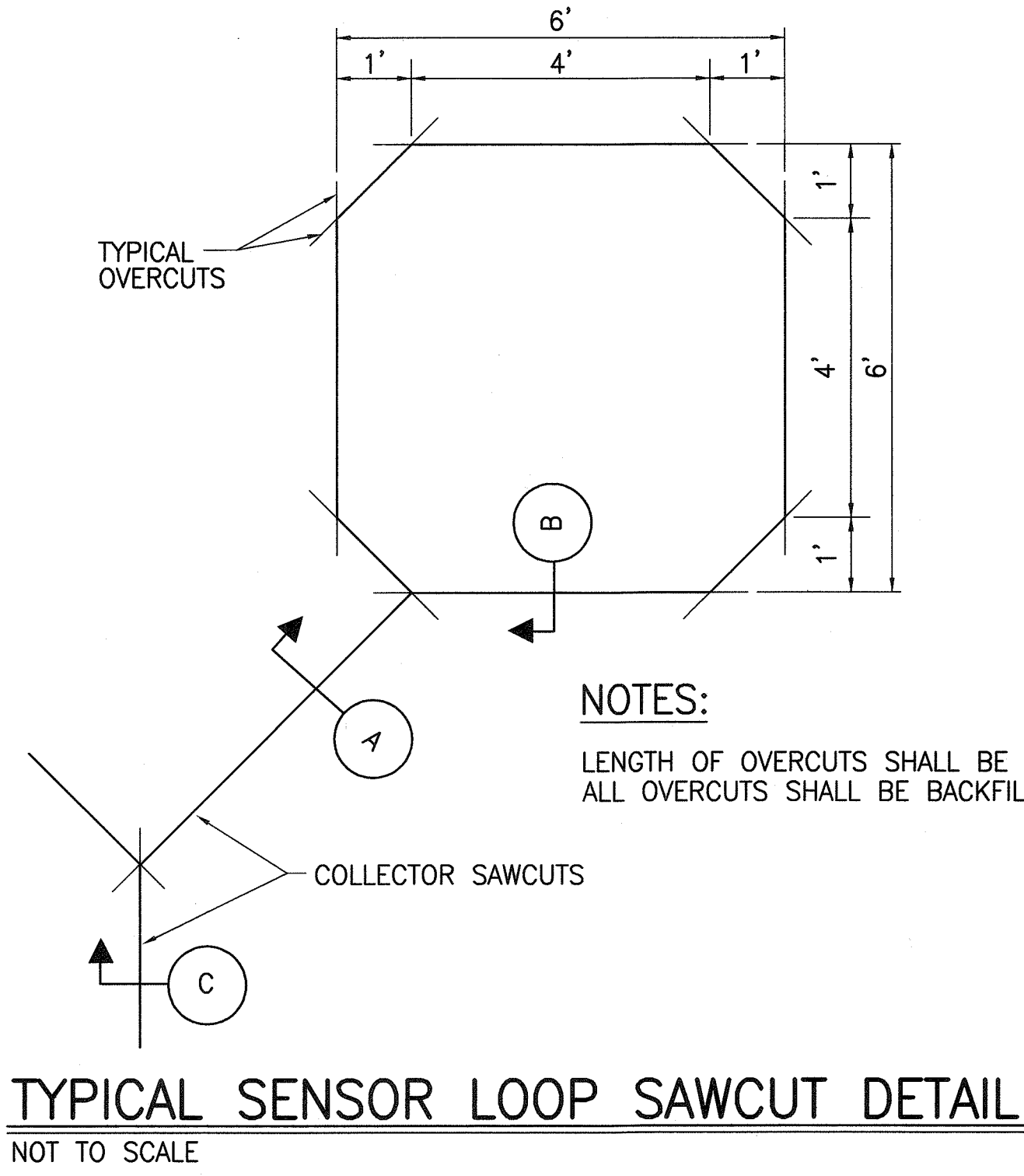


FED. ROAD DIST. NO.	STATE	PROJ. NO.	FISCAL YEAR	SHEET NO.	TOTAL SHEETS
HAWAII	HAW.	HWY-0-05-00	2002	22	30

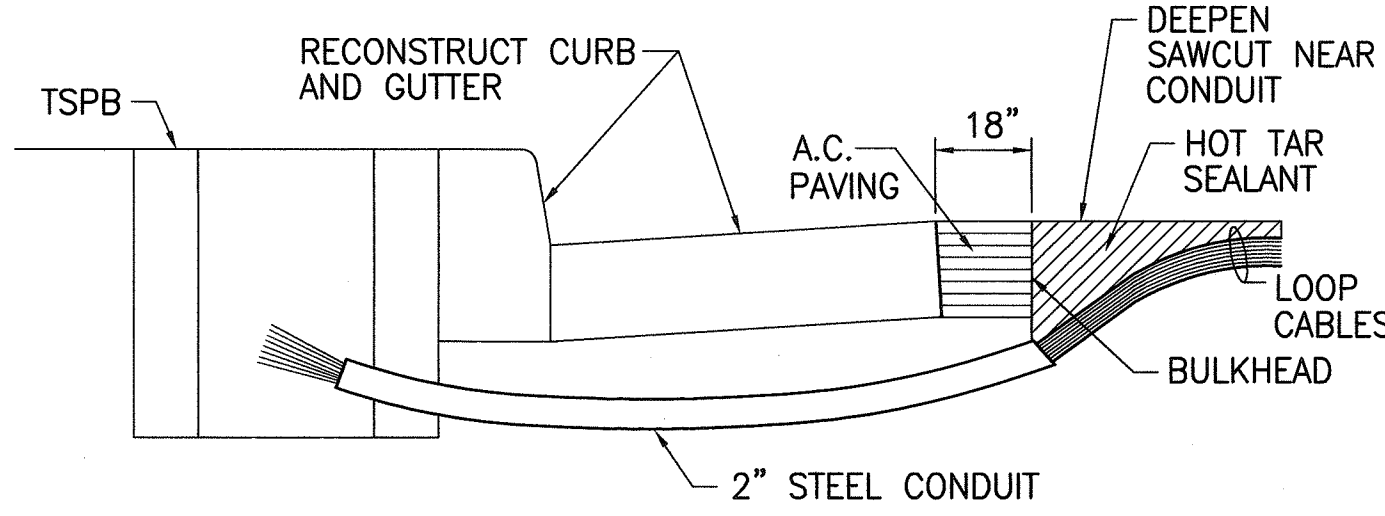


- NOTES:
1. CENTER SENSOR LOOPS IN LANES.
 2. COLLECTOR CABLES SHALL BE TWISTED 2 TURNS PER FOOT.
 3. NUMBER OF LOOPS AND LOCATIONS VARY. SEE PROJECT PLANS.
 4. NUMBER AND LOCATIONS OF COLLECTOR SAWCUTS MAY BE VARIED IN THE FIELD TO SUIT.

TYPICAL SENSOR LOOP LAYOUT
NOT TO SCALE

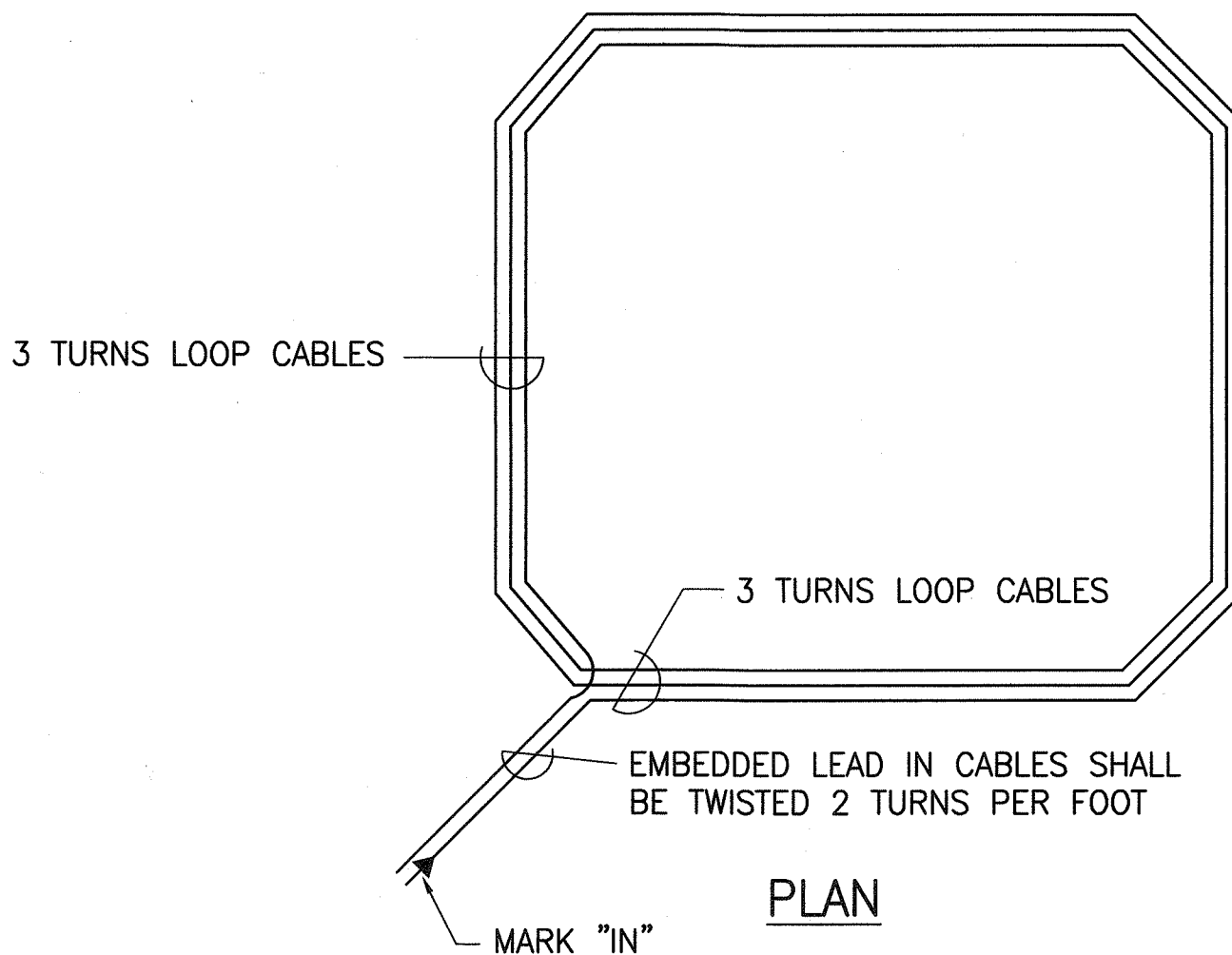
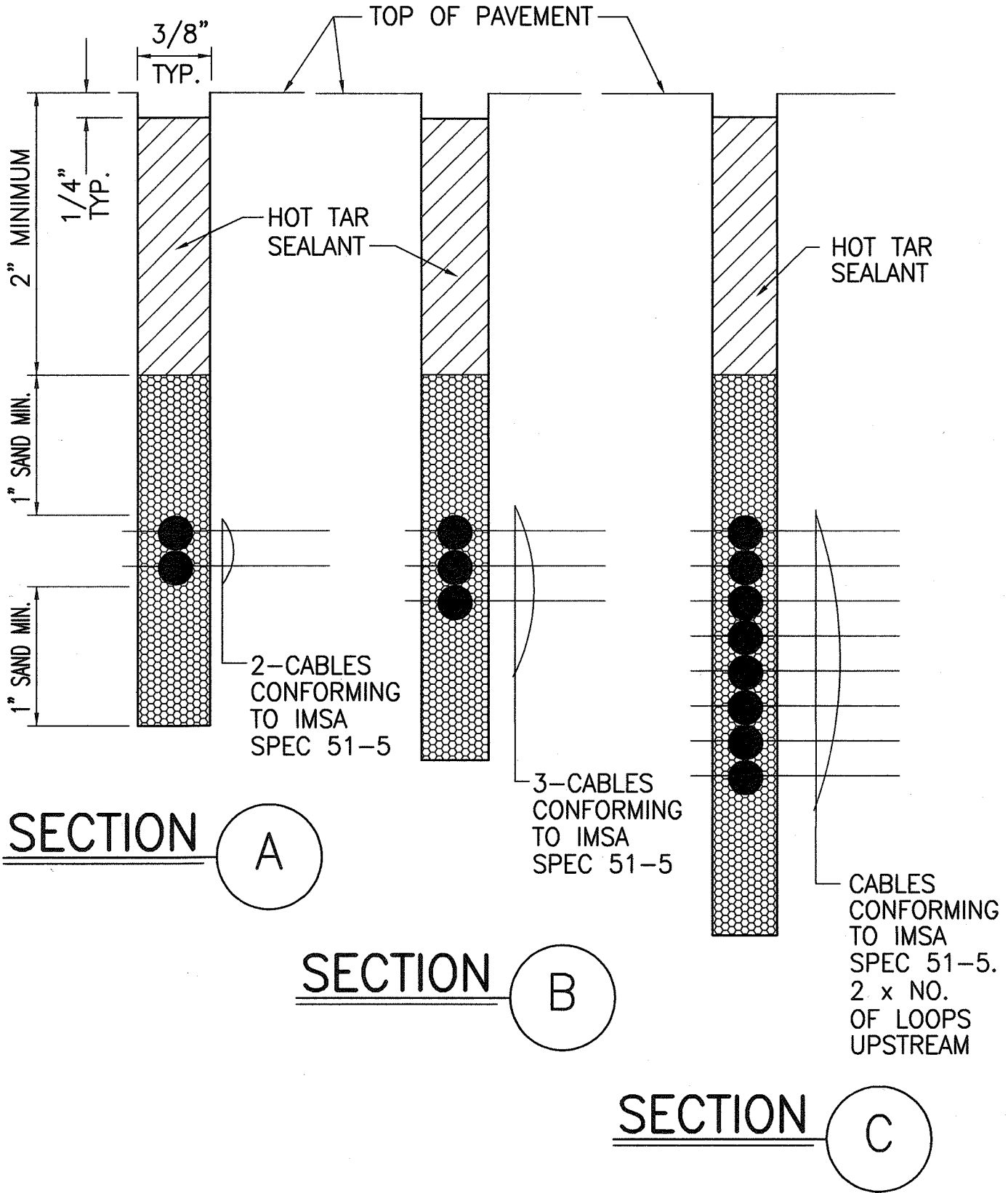


TYPICAL SENSOR LOOP SAWCUT DETAIL
NOT TO SCALE

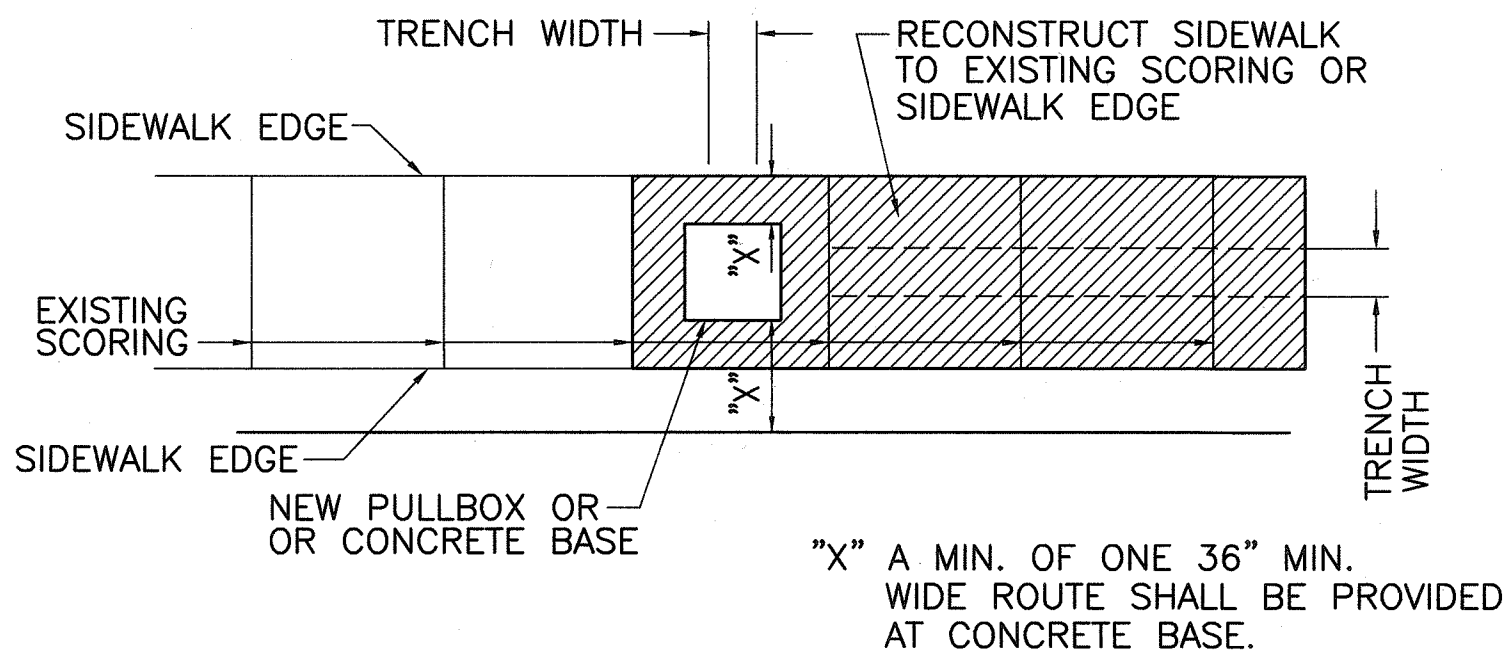


- NOTES ON CONSTRUCTION AT END OF SAWCUT
1. SEAL ROADWAY END OF CONDUIT AFTER INSTALLATION OF CONDUCTORS
 2. INSTALL BULKHEAD ACROSS CONDUIT TRENCH.
 3. PLACE HOT TAR IN SAWCUT.
 4. BACKFILL OVER CONDUIT WITH NEW A.C.
 5. RECONSTRUCT CURB AND GUTTER AS REQUIRED.

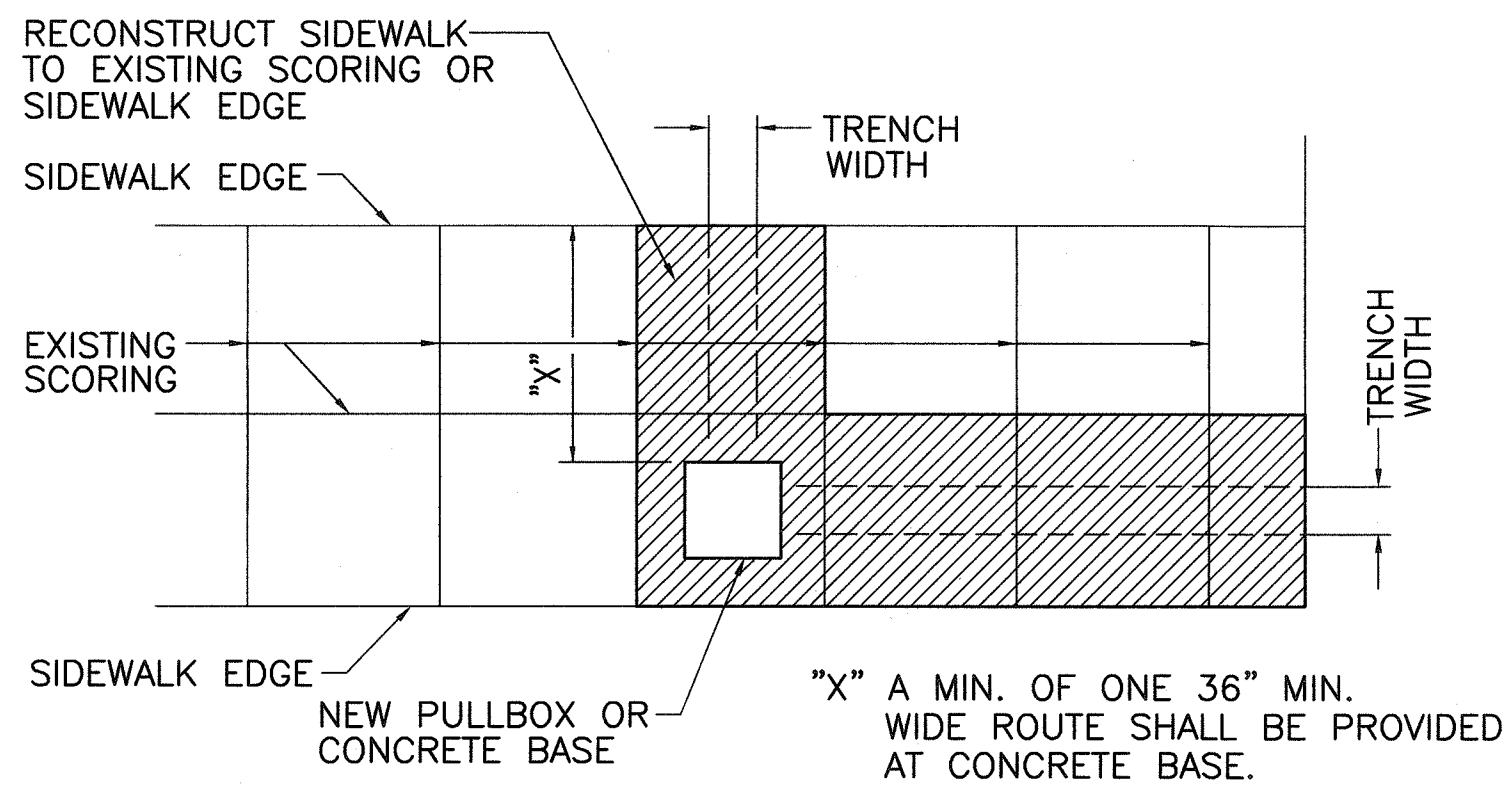
DETAIL OF SENSOR LOOP INSTALLATION AT EDGE OF ROADWAY
NOT TO SCALE



TYPICAL SENSOR LOOP WIRING DIAGRAM
NOT TO SCALE



AT SINGLE BLOCK-WIDTH SIDEWALKS



AT MULTIPLE BLOCK-WIDTH SIDEWALKS

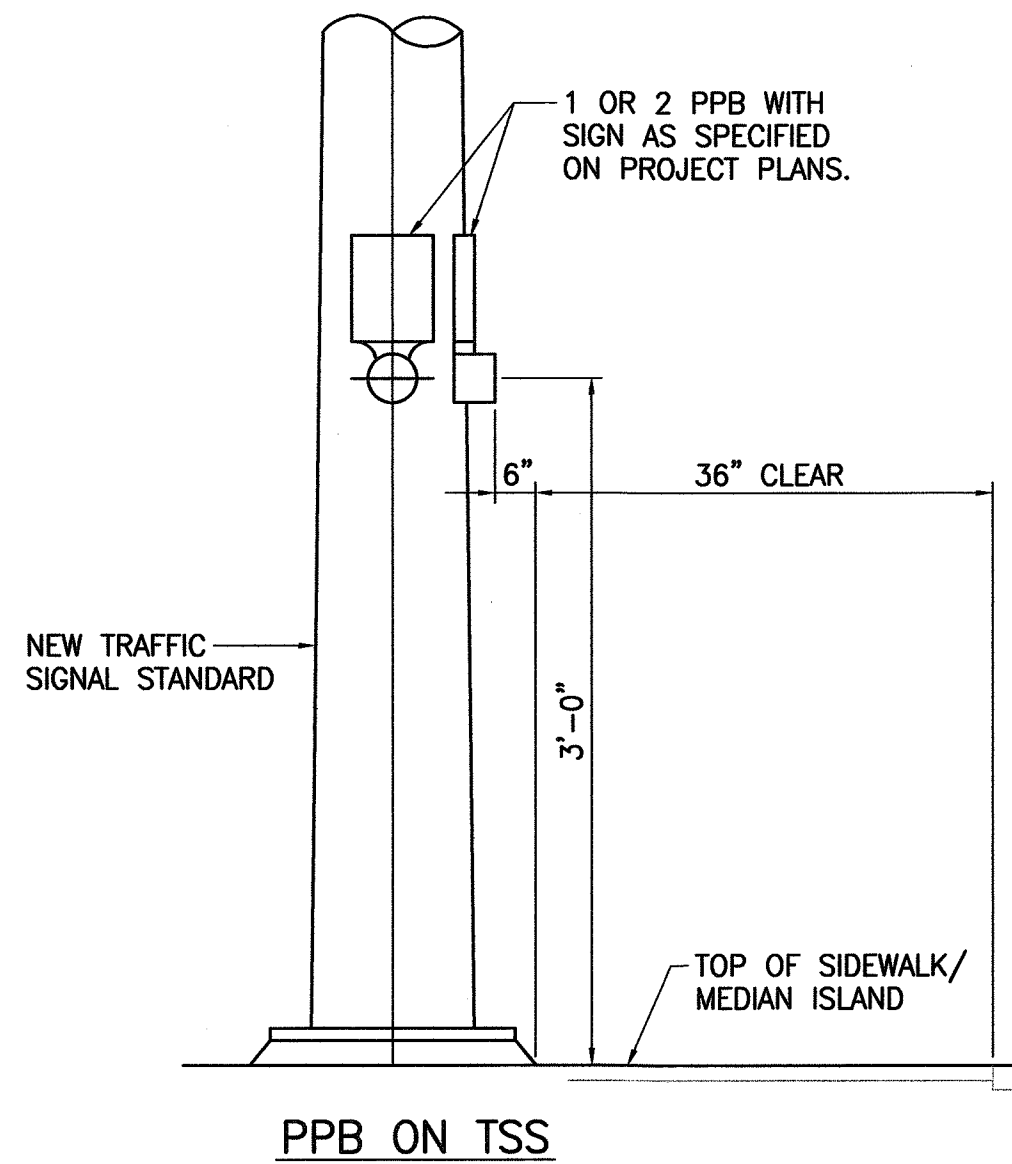
SIDEWALK RECONSTRUCTION DETAILS
NOT TO SCALE

STATE OF HAWAII
DEPARTMENT OF TRANSPORTATION
HIGHWAYS DIVISION

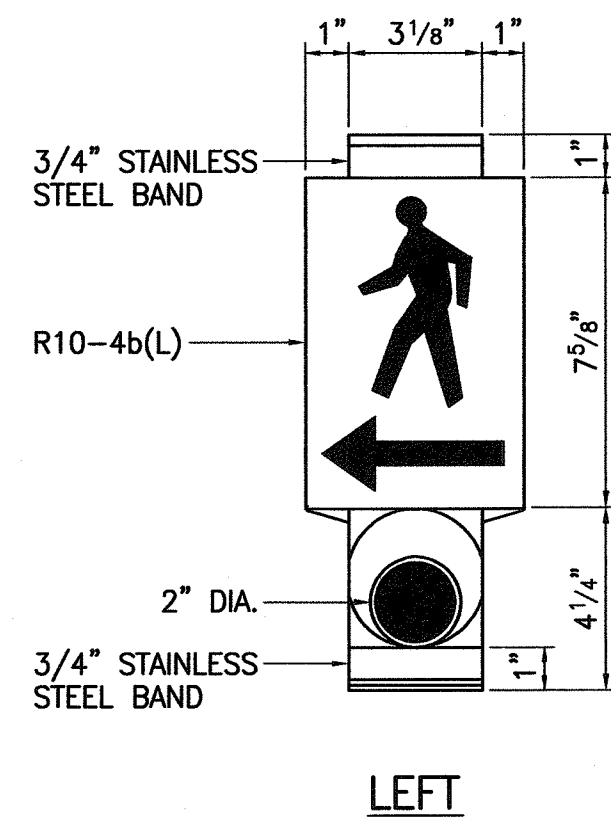
MISCELLANEOUS DETAILS
SAND ISLAND ACCESS ROAD
Intersection Improvements at Road No. 2
Project No. HWY-0-5-00
Scale: 1"=20' Date: Feb. 2002
SHEET No. TS-4 OF 7 SHEETS

SURVEY PLOTTED BY	DATE
DRAWN BY	
CHECKED BY	
NOTE BOOK	
QUANTITIES BY	
CHECKED BY	
No.	

FED. ROAD DIST. NO.	STATE	PROJ. NO.	FISCAL YEAR	SHEET NO.	TOTAL SHEETS
HAWAII	HAW.	HWY-0-05-00	2002	23	30

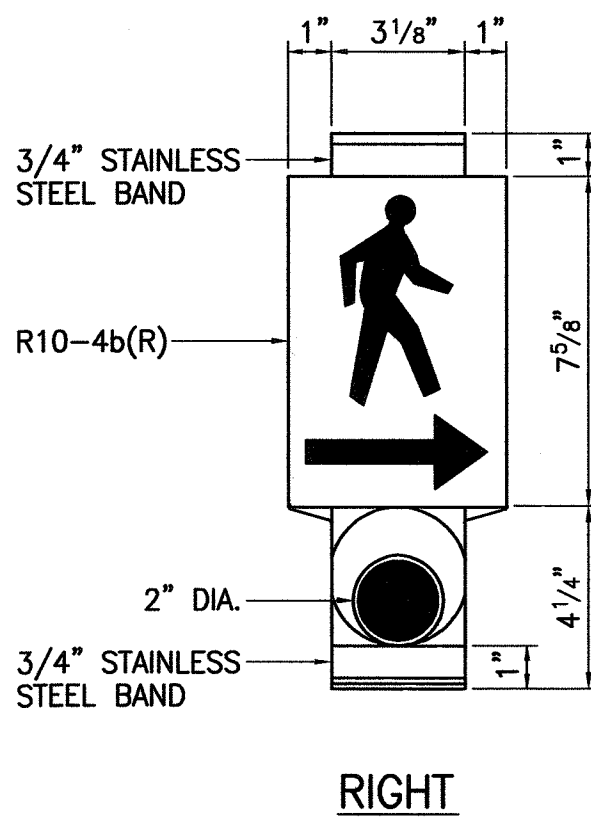


NOTE: ON PLAN SHEET, USE APPLICABLE DETAIL.



LEFT

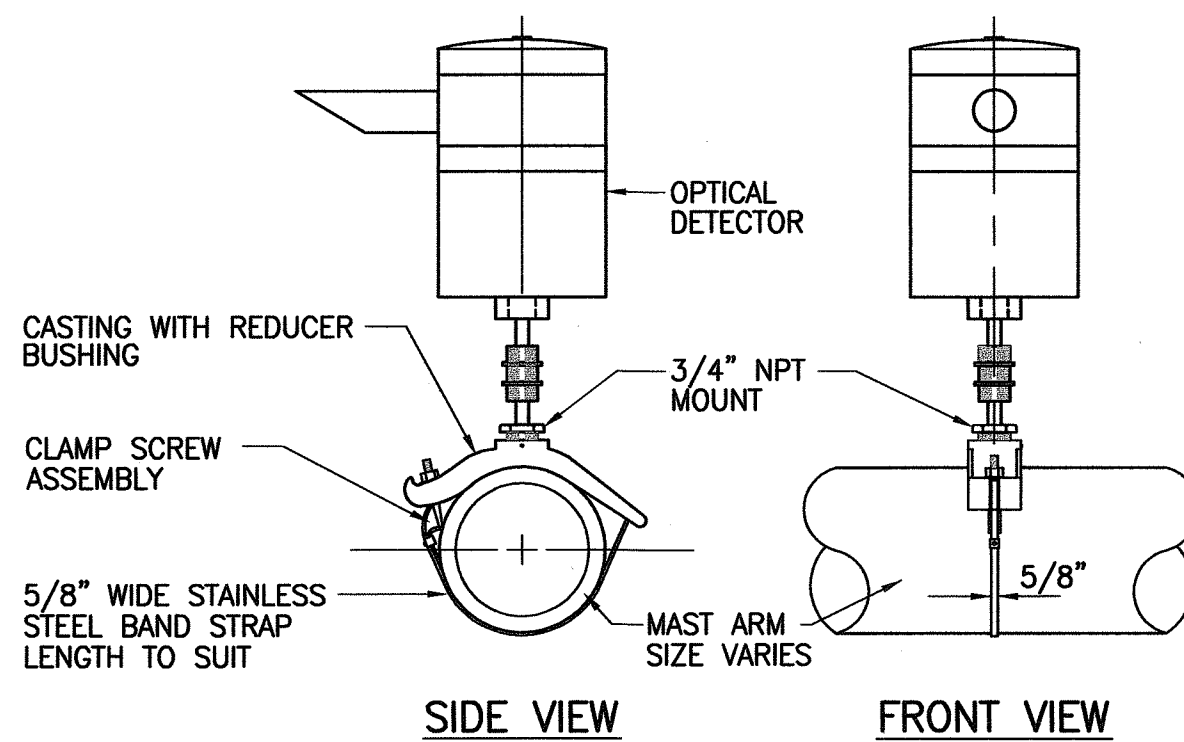
THE COLOR SCHEME SHALL BE:
WHITE - MAN, ARROW AND PUSH BUTTON
BLACK - BACKGROUND



RIGHT

PEDESTRIAN PUSH BUTTON DETAILS

NOT TO SCALE



SIDE VIEW

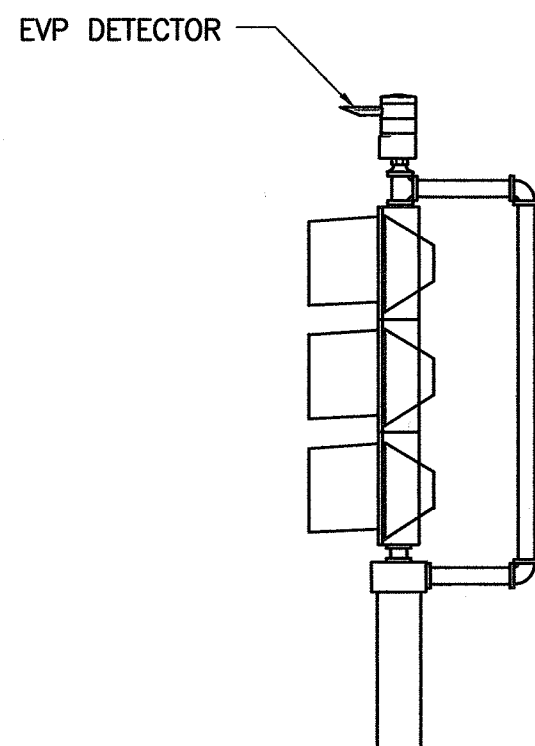
FRONT VIEW

NOTES:

1. OPTICAL DETECTOR SHALL BE "MODEL 711 PREEMPTION DETECTOR", OR APPROVED EQUAL, UNLESS NOTED OTHERWISE IN THE SPECIAL PROVISIONS.
2. SUPPORT SADDLE ASSEMBLY SHALL BE "ASTRO MINI-BRAC, AB-0132-29", OR APPROVED EQUAL, UNLESS NOTED OTHERWISE IN THE SPECIAL PROVISIONS.

OPTICAL DETECTOR FOR MAST ARM MOUNTING

NOT TO SCALE



POST TOP TP-EVP MOUNTING

TP-EVP MOUNTING

NOT TO SCALE

ORIGINAL PLAN	SURVEY PLOTTED BY	DATE
NOTE BOOK	DRAWN BY	" "
No.	CHECKED BY	" "
	QUANTITIES BY	" "
	CHECKED BY	" "

STATE OF HAWAII
DEPARTMENT OF TRANSPORTATION
HIGHWAYS DIVISION

MISCELLANEOUS DETAILS

SAND ISLAND ACCESS ROAD
Intersection Improvements at Road No. 2
Project No. HWY-0-5-00

Scale: NONE Date: Feb. 2002

SHEET No. TS-5 OF 7 SHEETS