

ORIGINAL PLAN	SURVEY PLOTTED BY _____	DATE _____
NOTE BOOK	DRAWN BY _____	" _____
	TRACED BY _____	" _____
	DESIGNED BY _____	" _____
	QUANTITIES BY _____	" _____
No. _____	CHECKED BY _____	" _____

- CURB RAMP NOTES CONT.

- 
- Diagram illustrating the gutter installation details. The diagram shows a cross-section of the gutter system. Key components labeled include:
- top of exist. grade
  - adjustment wall
  - Landing
  - Gutter Line or E.P.
  - Gutter
  - New Sidewalk

Diagram illustrating the dimensions and components of a Pedestrian Push Button Pedestal or Hwy. Light Pole:

- Type I, II, III TSS, Pedestrian Push Button Pedestal or Hwy. Light Pole** (Label pointing to the pole structure)
- 0'-6"** (Dimension for the height of the pole above the base)
- 3'-0"** (Dimension for the height of the base from the sidewalk level)
- Top of Sidewalk** (Label pointing to the sidewalk surface)
- 1'-0"** (Dimension for the width of the base)
- 1'-6"** (Dimension for the width of the base at the bottom)
- exist. grade adjustment wall** (Label pointing to the wall at the base of the pole)
- PPB with Sign as Specified on Project Plan** (Label pointing to the push button unit)
- Varies** (Label indicating variable dimensions for the base and wall)
- 0'-7"** (Dimension for the total height of the base)

Diagram illustrating the installation of a Pedestrian Push Button (PPB) with dimensions and components:

- PPB with Sign as Specified on Project Plan**: The main assembly.
- Type I, II, III TSS, Pedestrian Push Button Pedestal or Hwy. Light Pole**: The vertical support structure.
- 0'-6"**: Dimension from the top of the PPB to the top of the pedestal.
- 0'-8"**: Dimension from the top of the pedestal to the top of the cut exist. grade adjustment wall.
- 3'-0"**: Dimension from the top of the PPB to the top of the cut exist. grade adjustment wall.
- Curb Ramp**: The sloped area leading up to the PPB.
- Cut Exist. Grade Adjustment Wall To Depth Required**: The wall structure supporting the PPB.
- 1'-3"**: Dimension from the curb ramp to the base of the PPB.
- 0'-8" Varies**: Dimension from the base of the PPB to the bottom of the cut exist. grade adjustment wall.
- exist. grade adjustment wall**: The existing wall structure.

TYPE - "D"  
MODIFIED CURB  
RAMP

adjust existing wm box to new finish grade

New Gutter  
Broom Finish  
New Drop Curb

Level Area  
exist. grade adjustment wall

5% Max. Slope

8.33% Max. Slope

New Curb

New Sidewalk

exist. sign

exist. fence

exist. p.p.

R/W Line

TSS W/ PPB  
(See Detail "A")

TC 7.60  
BC 7.10

TC 7.70  
BC 7.20

TC 7.32±  
BC 7.24±

TC 7.74±  
BC 7.24±

TC 7.41±  
BC 6.83±

TC 7.73±  
BC 7.01±

TC 8.05±  
BC 7.10±

TC 8.38±  
BC 7.30±

TC 8.42±  
BC 7.34±

4'-0"

9'-0"

12'-0"

4'-0"

1'-6"

5'-0"

existing curb (no Gutter)

**TYPE - "B" CURB RAMP**

existing gutter  
existing std. curb  
existing sidewalk

5'-4"

4'-6" 7'-0" 5'-0" 7'-0" 6'-0" 7'-0"

TC 6.37±  
BC 6.77±  
BC 6.27±

TC 6.80±  
BC 6.50±

TC 6.33±  
BC 6.33±

TC 6.38±  
BC 6.35±

TC 6.88±  
BC 6.58±

TC 6.90±  
BC 6.40±

New Curb  
Landing

New Drop Curb  
8.33% Max. Slope

2% Max. Slope

New Drop Curb  
8.33% Max. Slope

Landing  
3'-0"

New Curb  
8.33% Max. Slope

New Drop Curb  
6.42±  
BC 6.42±

6.52±

5% Max. Slope

Level Area

4'-0"

6.54±

R/W Line  
Broom Finish (Typ.)

TC 7.50±  
BC 6.87±

TC 7.48±  
BC 6.90±

TC 7.48±  
BC 6.43±

TC 7.47±  
BC 6.45±

TC 7.46±  
BC 6.98±

TC 7.46±  
BC 7.07±

TC 7.44±  
BC 6.50±

TC 7.44±  
BC 6.44±


Broom Finish (Typ.)

exist. grade adjustment wall

TSS with PPB  
(See Detail "B")

Replace 6'L.F. Broken  
Grade Adjustment Wall  
(Match Exist.)  
(See Detail "A")

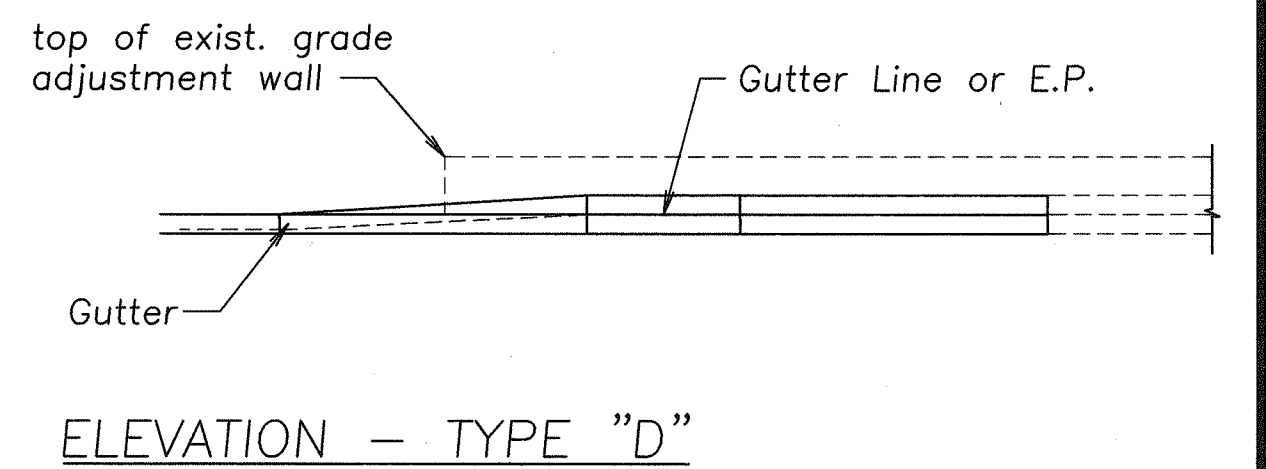
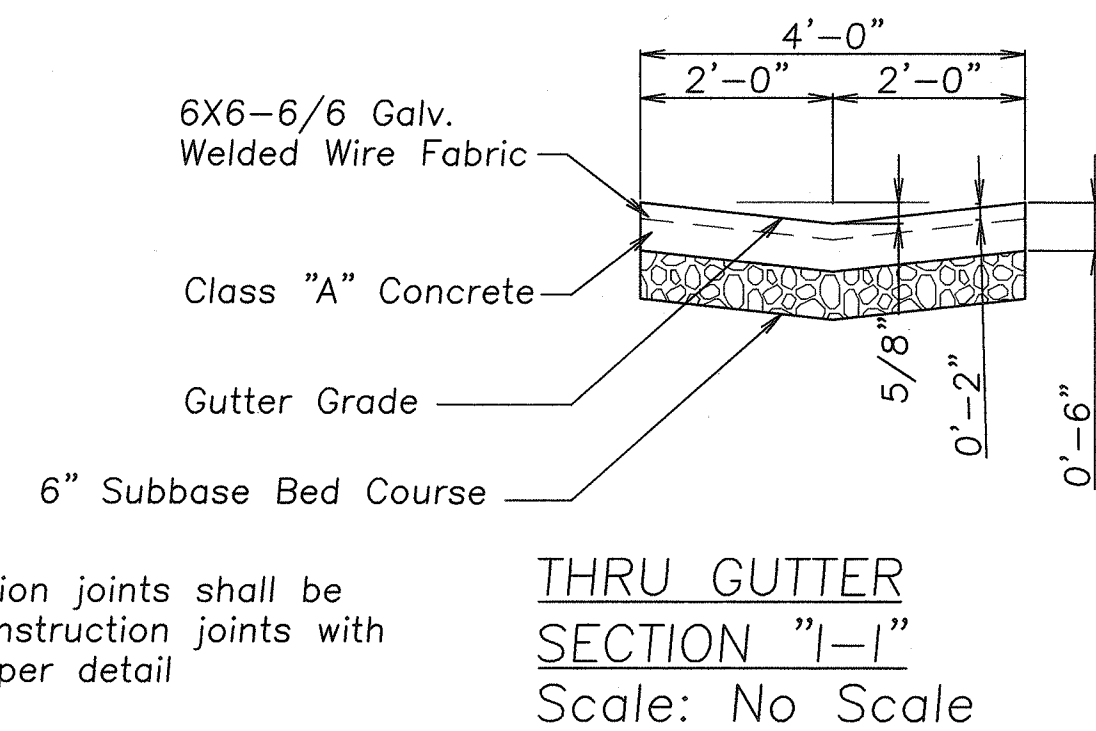
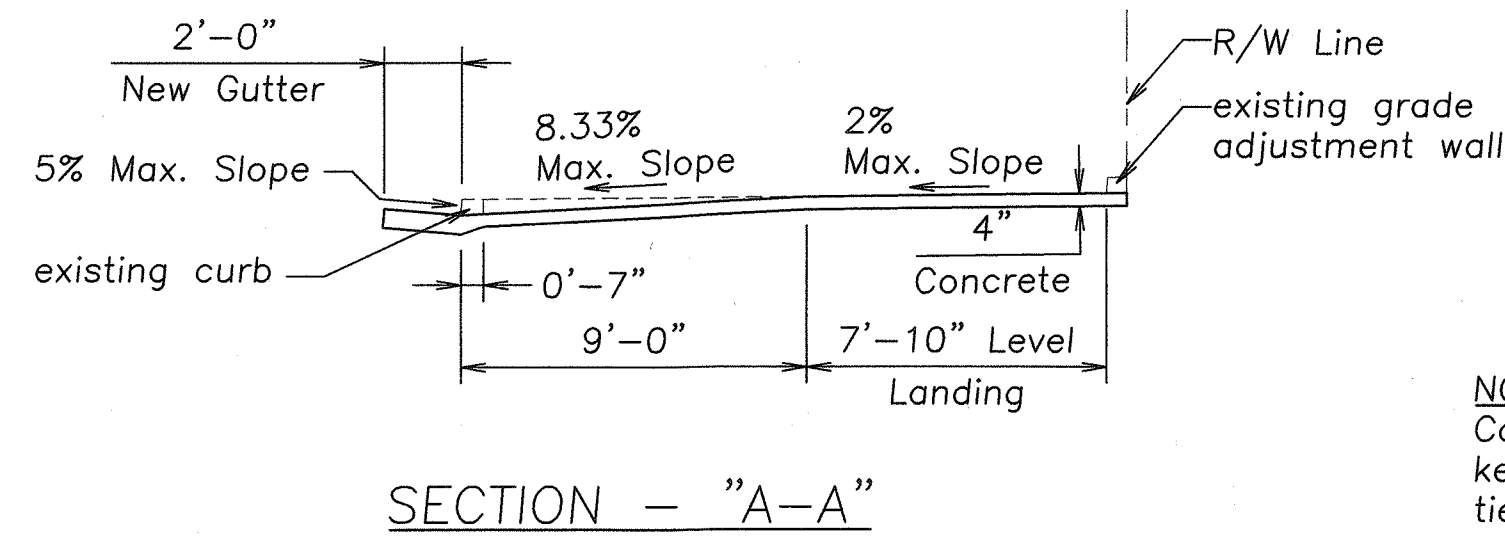
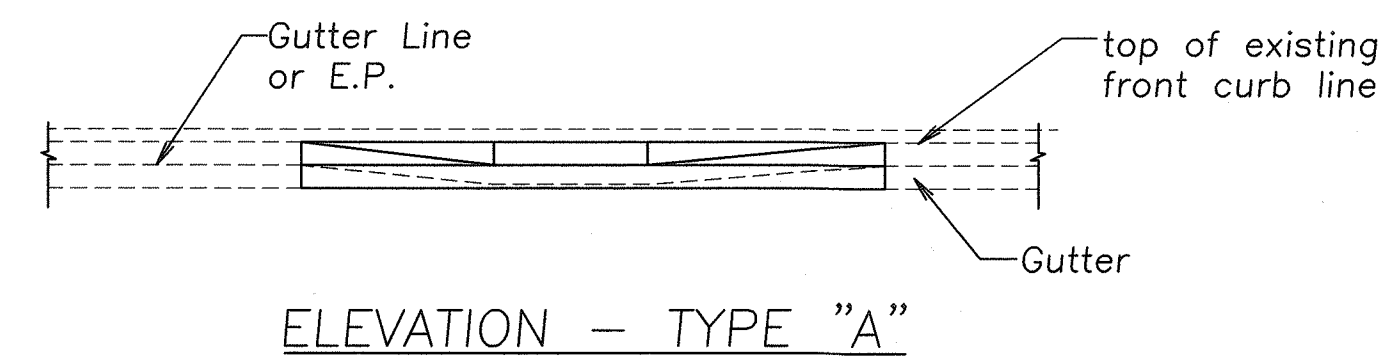
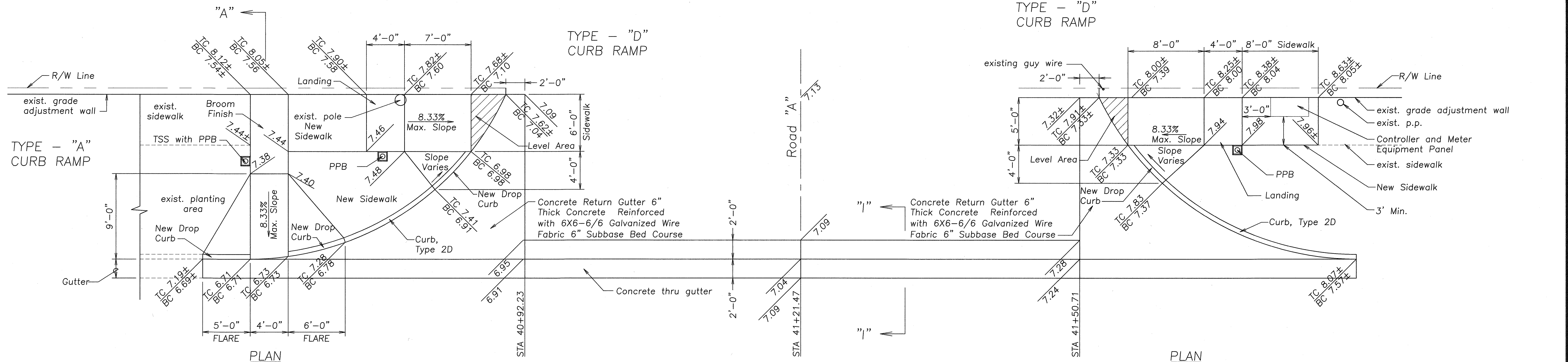
existing curb  
(no gutter)



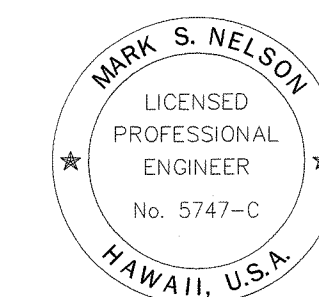
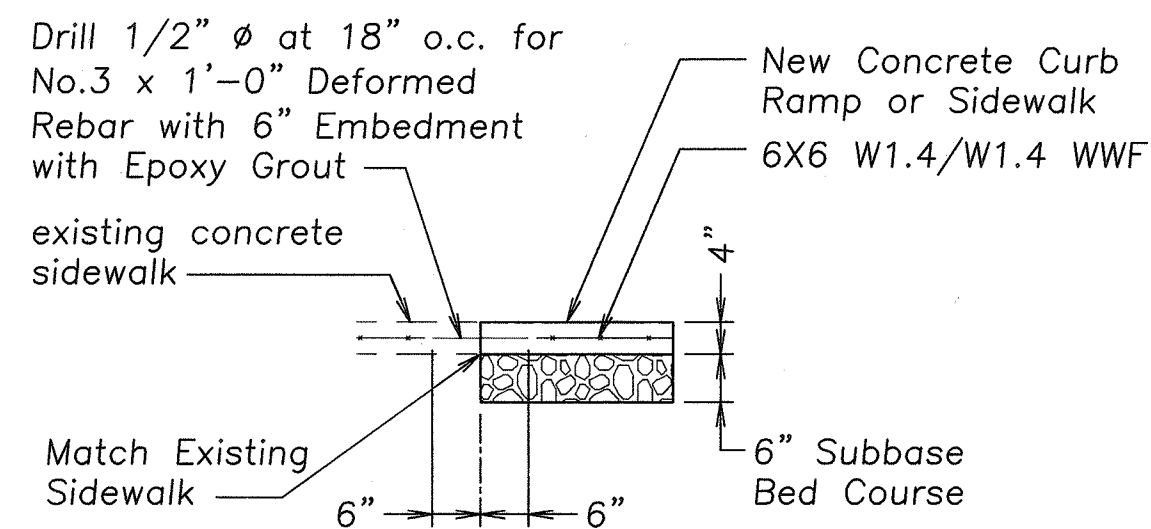
THIS WORK WAS PREPARED  
ME OR UNDER MY SUPERVISION

11

FED. ROAD DIST. NO.	STATE	PROJ. NO.	FISCAL YEAR	SHEET NO.	TOTAL SHEETS
HAWAII	HAW.	HWY-0-05-00	2002	12	30



#### CURB RAMP TYPE "A" & "D"



THIS WORK WAS PREPARED BY  
ME OR UNDER MY SUPERVISION

STATE OF HAWAII  
DEPARTMENT OF TRANSPORTATION  
HIGHWAYS DIVISION

**CURB RAMP & SIDEWALK DETAILS**

**SAND ISLAND ACCESS ROAD**  
Intersection Improvements at Road No. 2  
Project No. HWY-0-05-00  
Scale: 1" = 5' Date: Feb. 2002

SHEET No. 1 OF 1 SHEETS