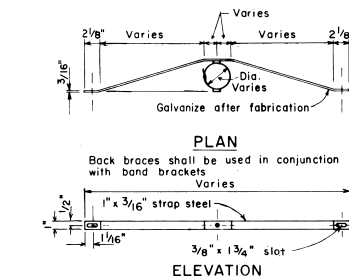


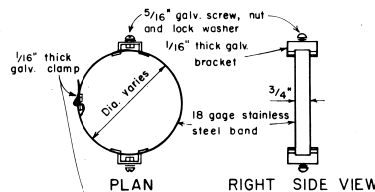
FED. ROAD DIST. NO.	STATE	PROJ. NO.	FISCAL YEAR	SHEET NO.	TOTAL SHEETS
HAWAII	HAW.	115-06A-1(L)	1963	7	15

### GENERAL NOTES

- Signs shall be placed in conformance with positions shown and described in the "Manual on Uniform Traffic Control Devices for Streets and Highways", 1978, Part II, Section 2A-21, as amended, and as supplemented herein.
- Signs 48" and wider or larger than 10 sq. ft. in area shall be mounted on two sign posts except as noted below.
- Signs 48" and wider or larger than 10 sq. ft. in area may be mounted on other than two sign posts (i.e. on highway lighting poles) as follows:
  - Signs larger than 10 sq. ft. and less than 28 sq. ft. in area shall be mounted with a minimum of two sets of band brackets and back braces.
  - Signs larger than 28 sq. ft. in area shall be mounted with a minimum of three sets of band brackets and back braces.
- All parking restriction signs with arrows shall be mounted 45° to the line of traffic flow.
- Sign posts shall extend 3 1/2" above each sign, where required, for attachment of City and County street name signs.
- (R) or (L) indicates right or left and shall be shown on the plans.
- See plans for special details of signs along bikeways.
- The minimum lateral distances shown are guidelines and shall be exceeded whenever possible. The Contractor shall place signs at the maximum practical lateral distance from the edge of the traveled way up to 30 feet and shall utilize protected locations whenever possible. Final locations of all signs shall be approved by the Engineer.
- Signs in medians shall be placed at midpoint of median up to a maximum distance of 30 feet from the edge of traveled way. When appropriate, signs for opposing directions shall be placed back to back.
- Anchor bases shall be installed for all signpost installations, unless otherwise shown or directed. See sheets DT 100A and DT 100B.



### BACK BRACE DETAILS FOR BALANCED SIGN INSTALLATION

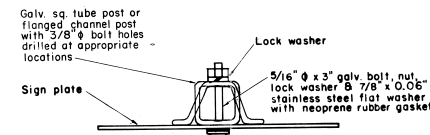


### LEFT SIDE VIEW

### BAND BRACKET

### TYPICAL MOUNTING DETAILS

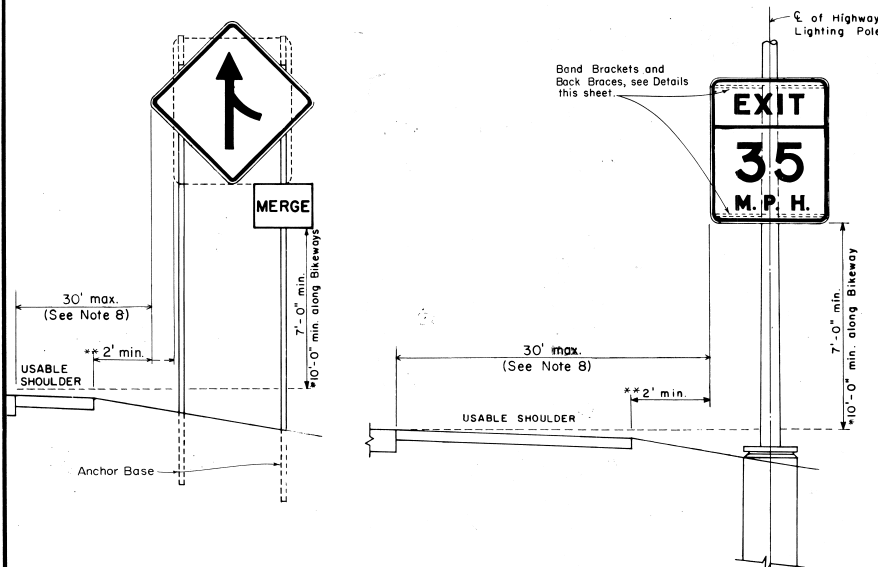
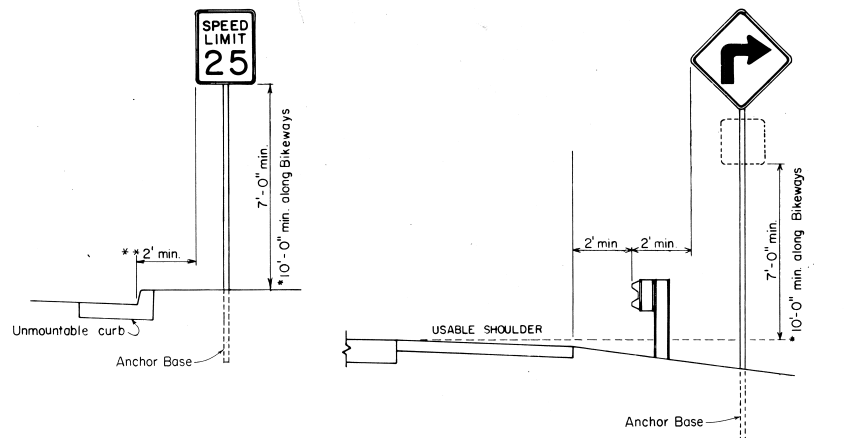
NOT TO SCALE



### GALVANIZED SQUARE TUBE OR FLANGED CHANNEL POST

APPROVAL RECOMMENDED:  
*Erich Tanaka* 11/10/77  
 TRAFFIC ENGINEER DATE  
 APPROVED:  
*Robert J. Nakagawa* 11/15/77  
 ASSISTANT CHIEF, ENGINEERING DATE

STATE OF HAWAII	
DEPARTMENT OF TRANSPORTATION	
HIGHWAYS DIVISION	
STANDARD DETAILS	
MISCELLANEOUS SIGN DETAILS	
Not to scale	June, 1977
SHEET NO. 7 OF 15 SHEETS DT 100	



### HEIGHT AND LATERAL LOCATION OF SIGNS TYPICAL INSTALLATION

DATE	BY
DESIGNED BY	
DRAWN BY	
CHECKED BY	
NOTED BY	
QUANTITIES BY	
ORIGINAL	
REVISION	
DATE	