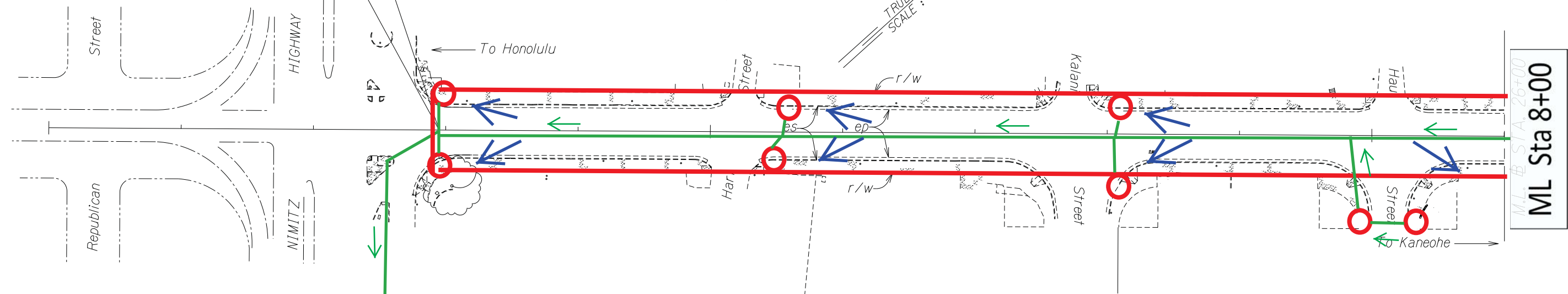


FED. ROAD DIST. NO.	STATE	PROJ. NO.	FISCAL YEAR	SHEET NO.	TOTAL SHEETS
HAWAII	HAW.	63A-01-14M	2014	0	0

BEGIN PROJECT
Project No. 63A-01-14M
Sta. 1+10

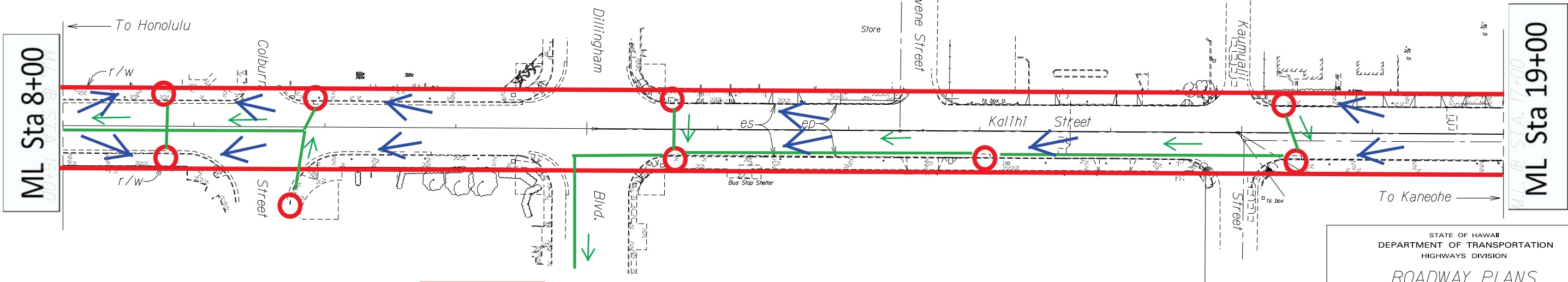


To Outfall 1
(Impaired)
Honolulu
Harbor

LEGEND

Protect Inlet 

Perimeter Sediment Control 



To Outfall 2
(Impaired)
Kapalama
Canal

BMP PLAN ROAD CONSTRUCTION
Road Construction (Reconstructing and resurfacing existing asphalt concrete pavement, adjusting drainage inlets and box culverts, replacing low height curb, gutter and sidewalk, adjusting utility pull boxes, manholes, and handholes, and installing pavement striping, marking and signing)

STATE OF HAWAII
DEPARTMENT OF TRANSPORTATION
HIGHWAYS DIVISION

ROADWAY PLANS

*KALIHI STREET RESURFACING
Nimitz Highway to School Street
Project No. 63A-01-14M*

Scale: 1" = 40' Date: Oct, 2013

SHEET No. 1 OF 4 SHEETS

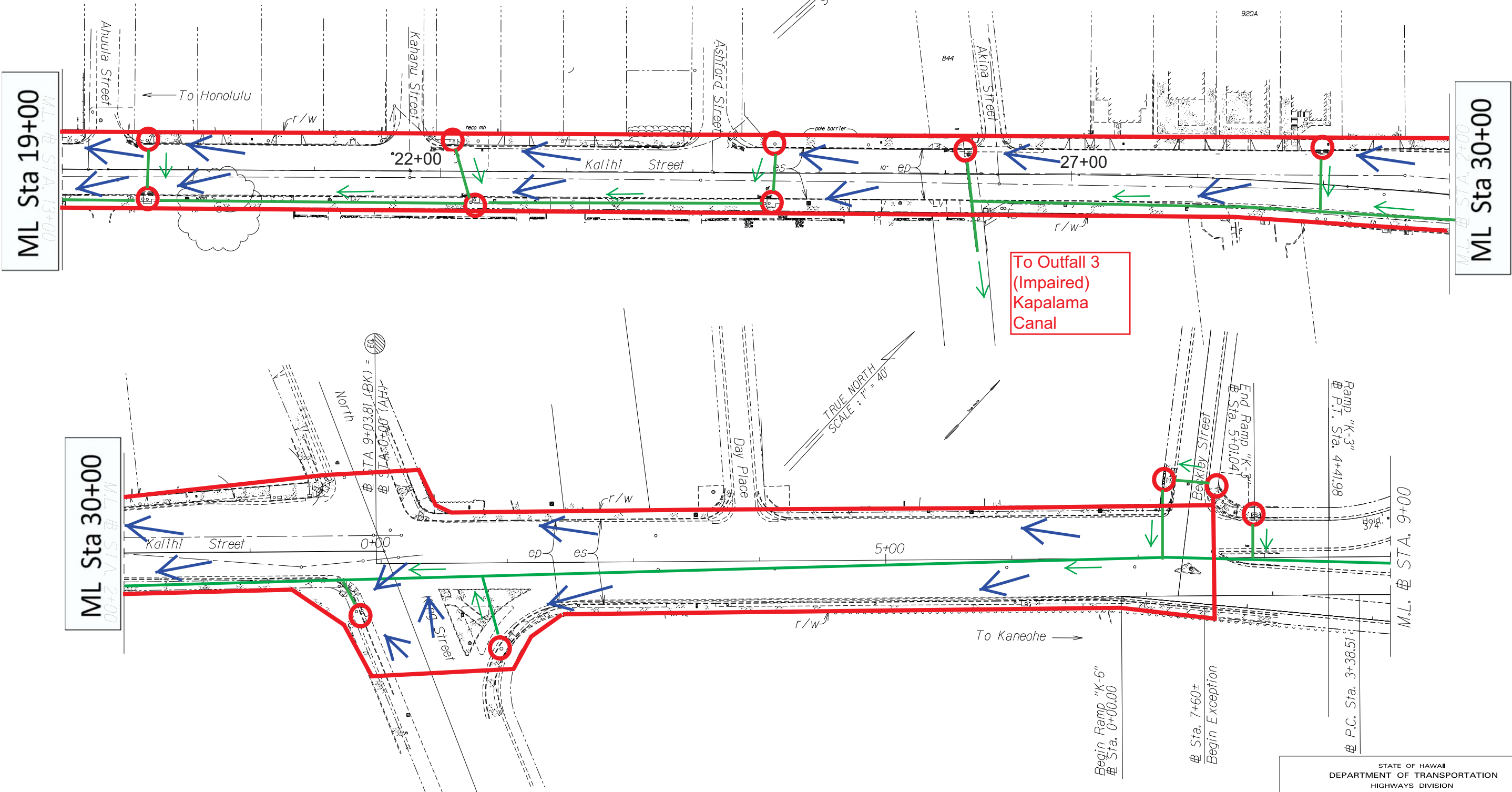
SURVEY PLOTTED BY	DATE
DRAWN BY	
INCHES BY	
QUANTITIES BY	
CHECKED BY	

FED. ROAD DIST. NO.	STATE	PROJ. NO.	FISCAL YEAR	SHEET NO.	TOTAL SHEETS
HAWAII	HAW.	63A-01-14M	2014	0	0

LEGEND

Protect Inlet

Perimeter Sediment Control



BMP PLAN ROAD CONSTRUCTION
Road Construction (Reconstructing and resurfacing existing asphalt concrete pavement, adjusting drainage inlets and box culverts, replacing low height curb, gutter and sidewalk, adjusting utility pull boxes, manholes, and handholes, and installing pavement striping, marking and signing)

STATE OF HAWAII
DEPARTMENT OF TRANSPORTATION
HIGHWAYS DIVISION

ROADWAY PLANS

KALIHI STREET RESURFACING
Nimitz Highway to School Street
Project No. 63A-01-14M

Scale: 1" = 40' Date: Oct, 2013

SHEET No. 2 OF X SHEETS

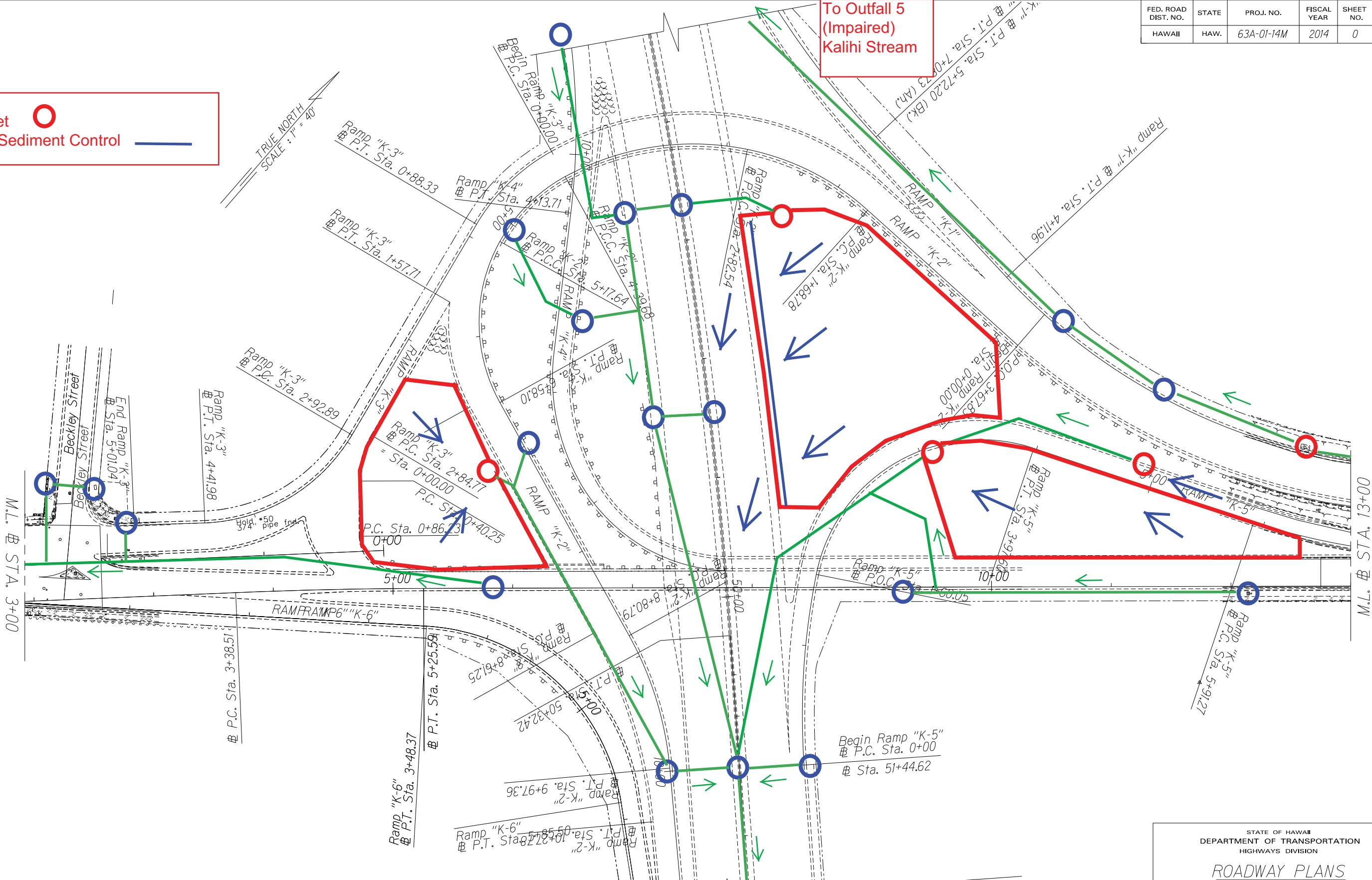
ORIGINAL PLAN	SURVEY PLOTTED BY	DATE
NOTE BOOK	DRAWN BY	
	INCHES BY	
	QUANTITIES BY	
	CHECKED BY	

FED. ROAD DIST. NO.	STATE	PROJ. NO.	FISCAL YEAR	SHEET NO.	TOTAL SHEETS
HAWAII	HAW.	63A-01-14M	2014	0	0

LEGEND

Protect Inlet

Perimeter Sediment Control



BMP PLAN ROAD CONSTRUCTION
Road Construction (Reconstructing and resurfacing existing asphalt concrete pavement, adjusting drainage inlets and box culverts, replacing low height curb, gutter and sidewalk, adjusting utility pull boxes, manholes, and handholes, and installing pavement striping, marking and signing)

To Outfall 4
(Impaired)
Kapalama
Canal

To Outfall 5
(Impaired)
Kalihi Stream

STATE OF HAWAII
DEPARTMENT OF TRANSPORTATION
HIGHWAYS DIVISION

ROADWAY PLANS

KALIHI STREET RESURFACING
Nimitz Highway to School Street
Project No. 63A-01-14M

Scale: 1" = 40' Date: Oct, 2013

SHEET No. 3 OF X SHEETS

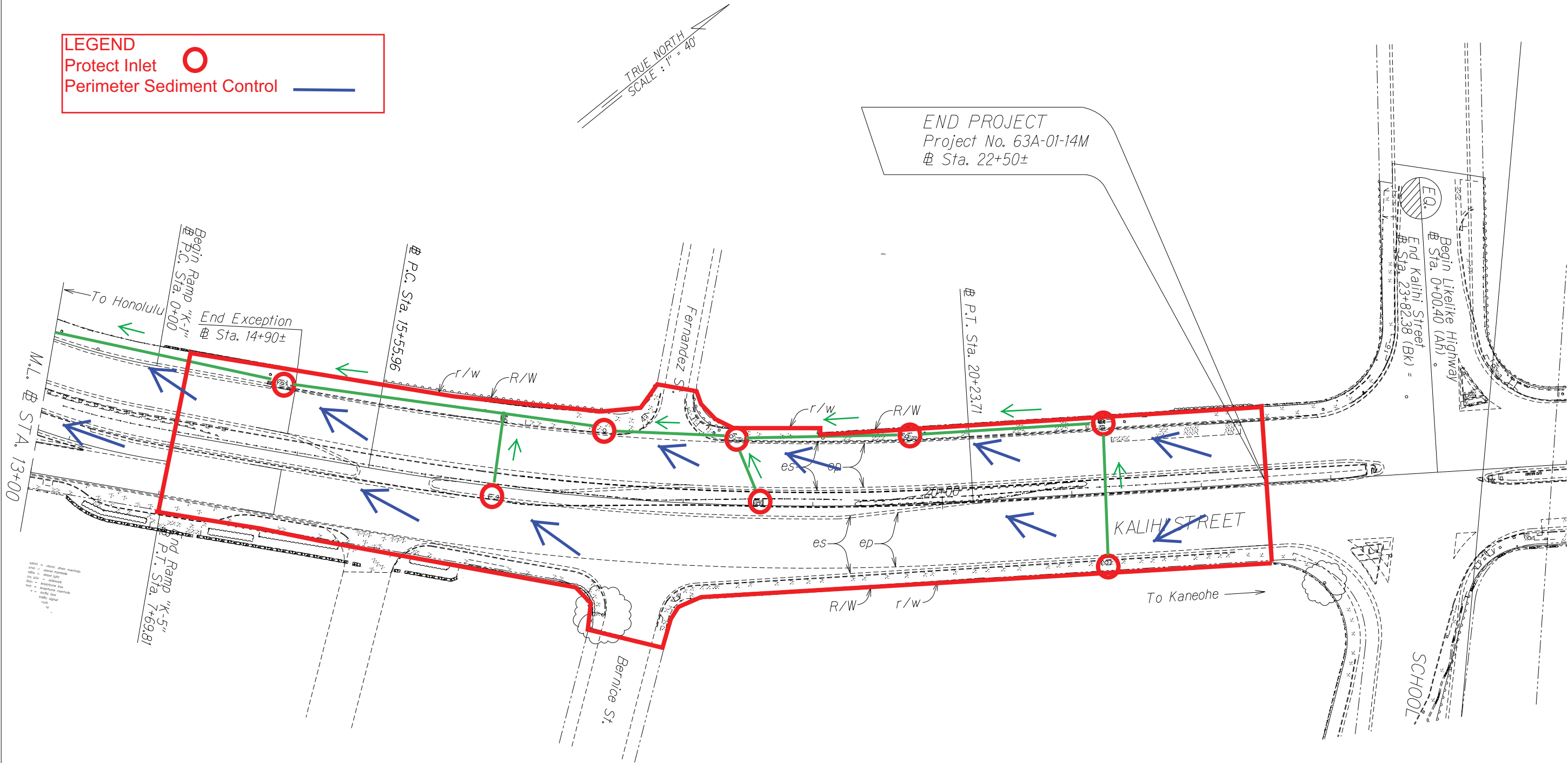
ORIGINAL PLAN	SURVEY PLOTTED BY	DATE
NOTE BOOK	DRAWN BY	
	INCHES BY	
	QUANTITIES BY	
	CHECKED BY	

FED. ROAD DIST. NO.	STATE	PROJ. NO.	FISCAL YEAR	SHEET NO.	TOTAL SHEETS
HAWAII	HAW.	63A-01-14M	2014	0	0

LEGEND

Protect Inlet

Perimeter Sediment Control



BMP PLAN ROAD CONSTRUCTION
Road Construction (Reconstructing and resurfacing existing asphalt concrete pavement, adjusting drainage inlets and box culverts, replacing low height curb, gutter and sidewalk, adjusting utility pull boxes, manholes, and handholes, and installing pavement striping, marking and signing).

STATE OF HAWAII
DEPARTMENT OF TRANSPORTATION
HIGHWAYS DIVISION

ROADWAY PLANS

KALIH STREET RESURFACING
Nimitz Highway to School Street
Project No. 63A-01-14M

Scale: 1" = 40' Date: Oct, 2013

SHEET No. 3 OF X SHEETS

ORIGINAL PLAN	SURVEY PLOTTED BY	DATE
NOTE BOOK	DRAWN BY	
	DESIGNED BY	
	QUANTITIES BY	
	CHECKED BY	