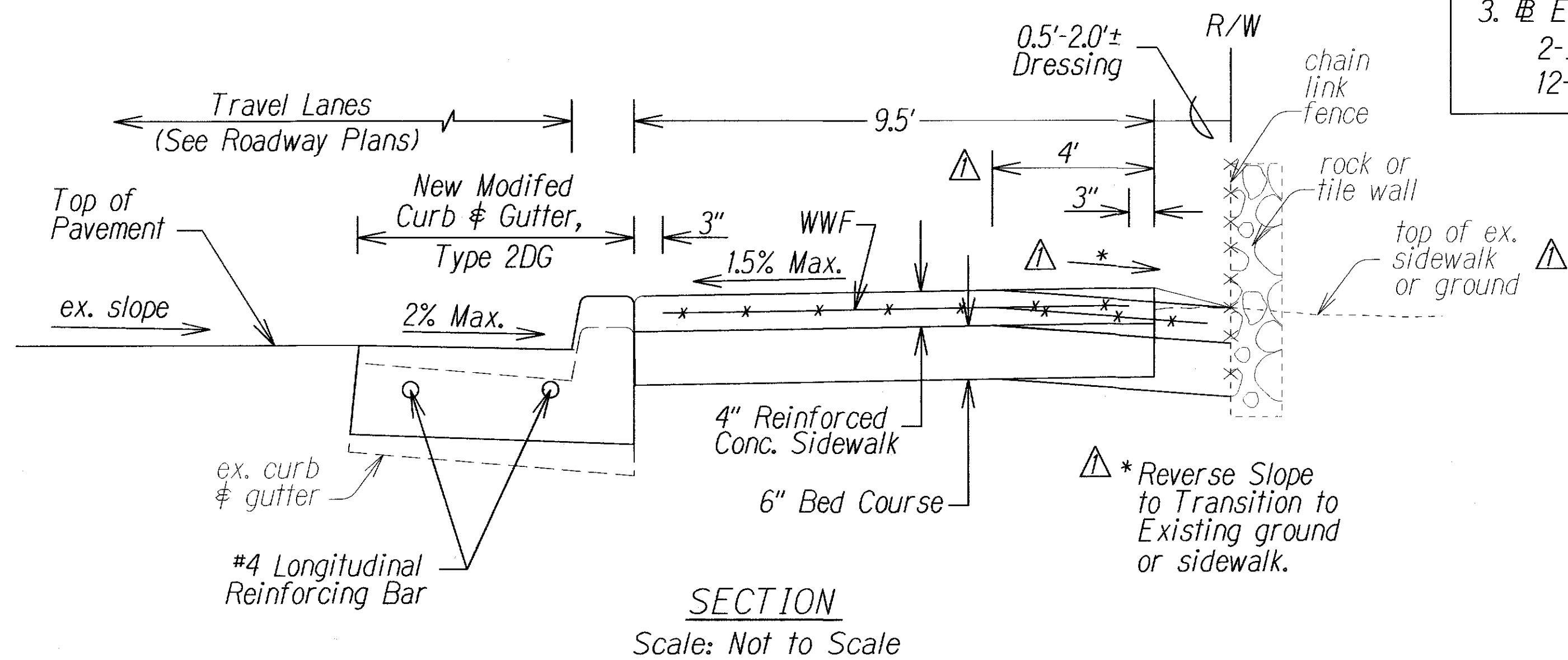
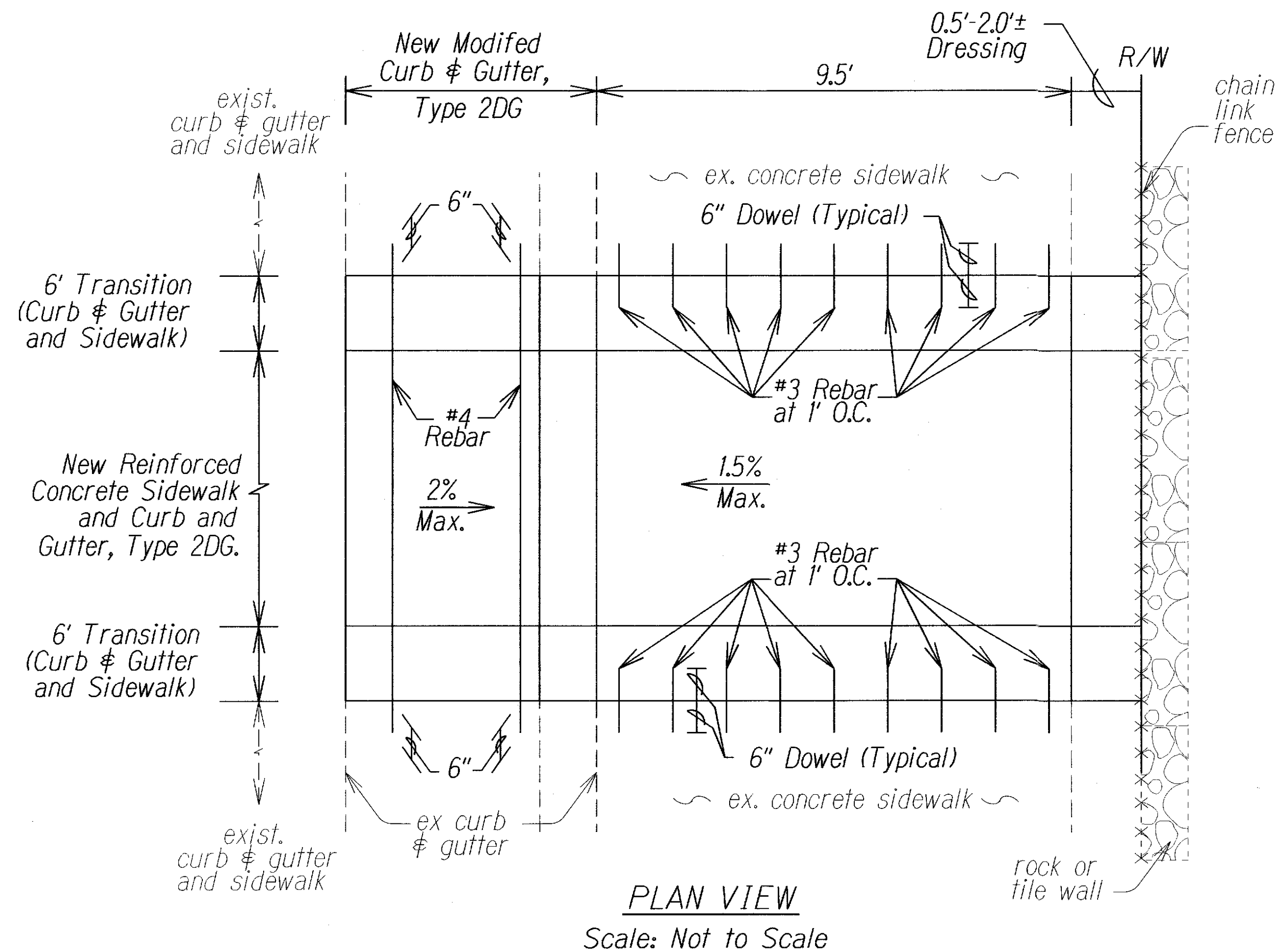
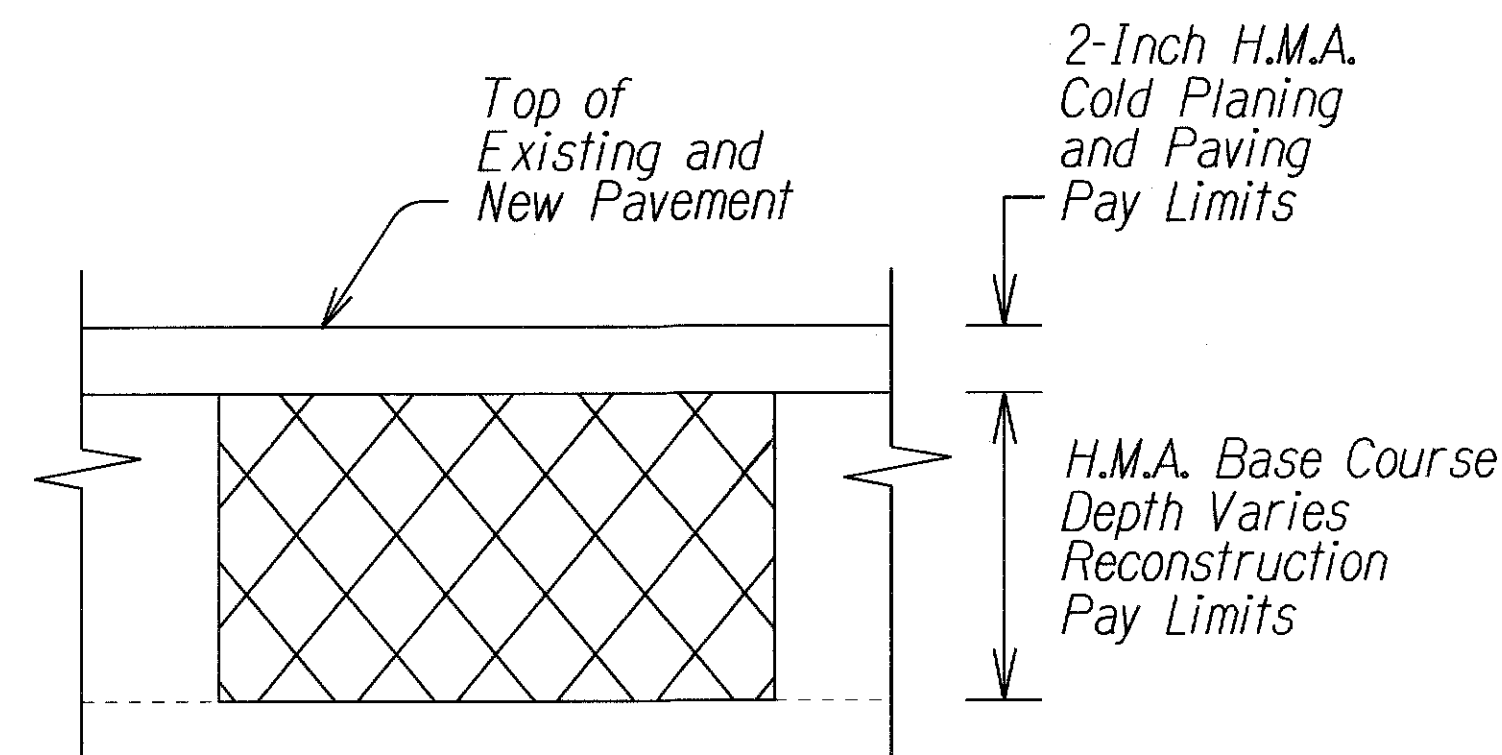


FED. ROAD DIST. NO.	STATE	FEDERAL-AID PROJ. NO.	FISCAL YEAR	SHEET NO.	TOTAL SHEETS
HAWAII	HAW.	STP-063-1(024)	2017	ADD.9	37

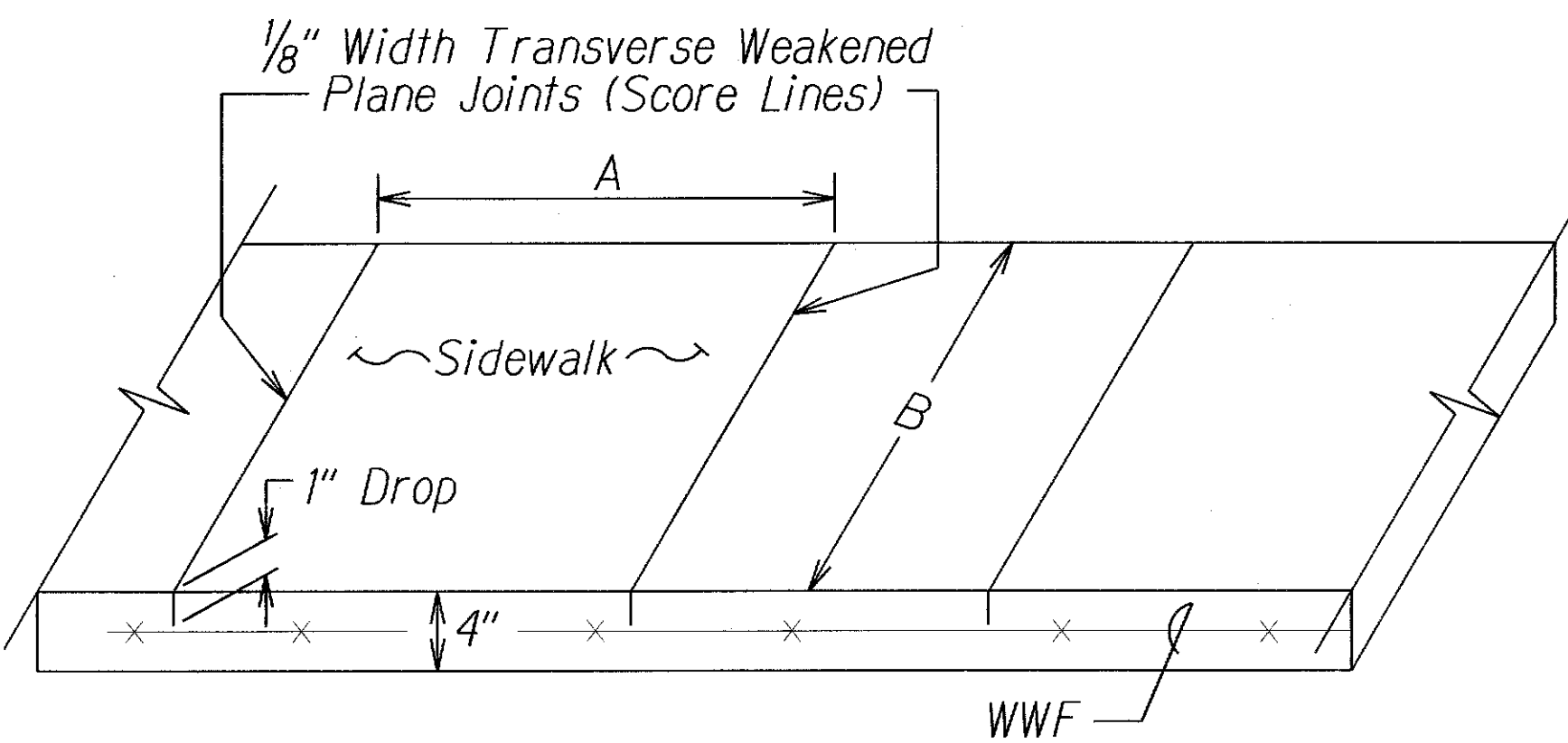


Notes:

- The 6-inch dowels, #3 rebar extending through the existing concrete sidewalk and #4 rebar for curb & gutter shall be epoxy grouted. The dowels including drilling, epoxy and concrete adhesive shall be incidental to the Modified Curb & Gutter and Reinforced Concrete Sidewalk.
- Except for the gutter slope of 2%, the Modified Curb & Gutter, Type 2DG shall be constructed according to Standard Plan D-05.
- WWF shall be 6 x 6 W1.4 x W1.4 at Mid-Height of Concrete.

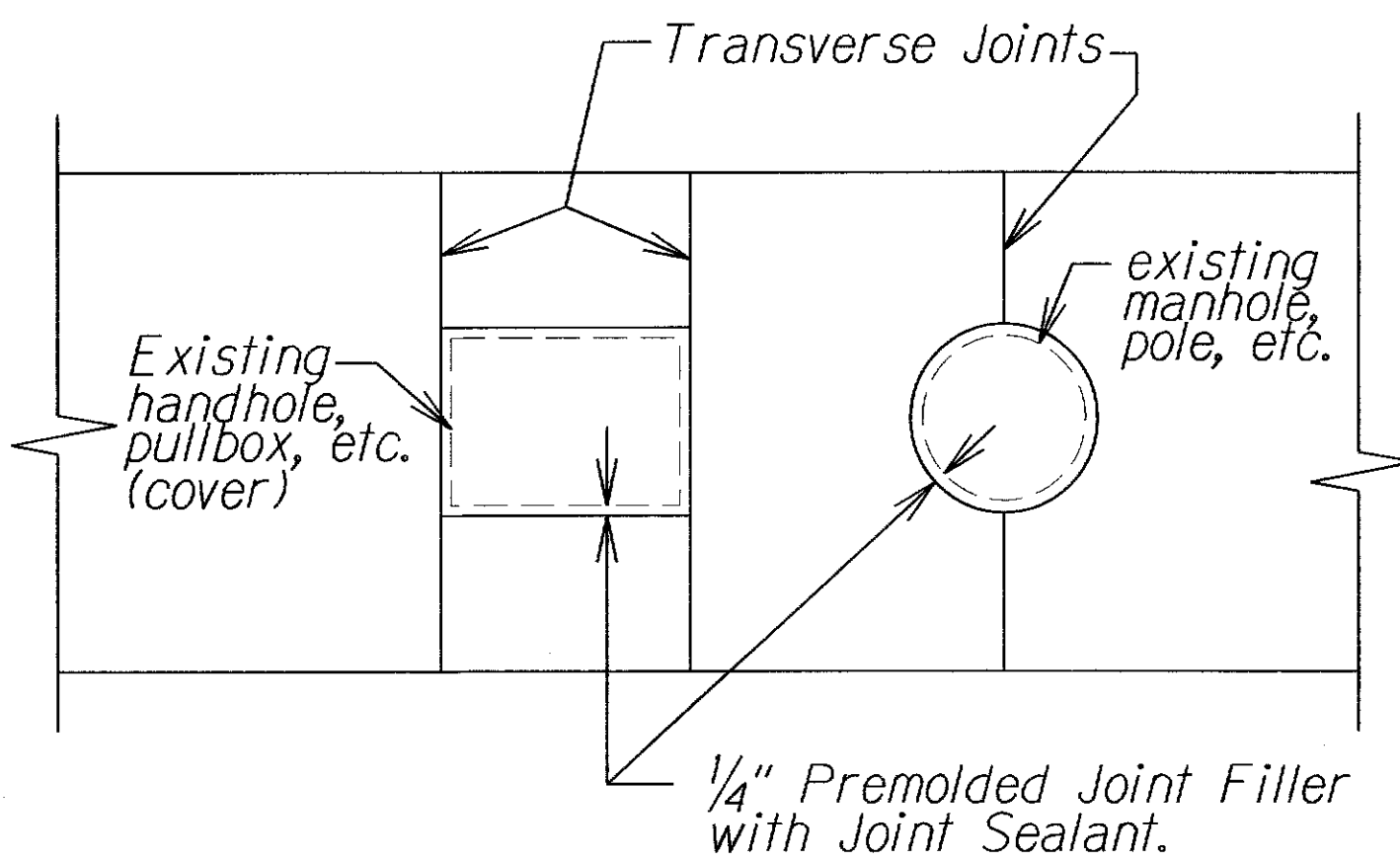


RECONSTRUCTION DEPTH SCHEDULE:
1. Sta. 0+50 to EQ. Sta. 32+96.27 (Back) 2-Inch H.M.A. Pavement, Mix No. IV 7-Inch H.M.A. Base Course
2. EQ. Sta. 2+96.27± (Ahead) to Sta. 9+70± 2-Inch H.M.A. Pavement, Mix No. IV 9-Inch H.M.A. Base Course
3. EQ. Sta. 14+03.57± (Ahead) to EQ. Sta. 23+30± 2-Inch H.M.A. Pavement, Mix No. IV 12-Inch H.M.A. Base Course



Notes:

- Joint Dimensions or (B/A or A/B) < 1.25 and (A or B) not to exceed 7'-0"
- Longitudinal Joints shall be similar to Transverse Joints.
- Special Design to used where A or B > 7'-0"



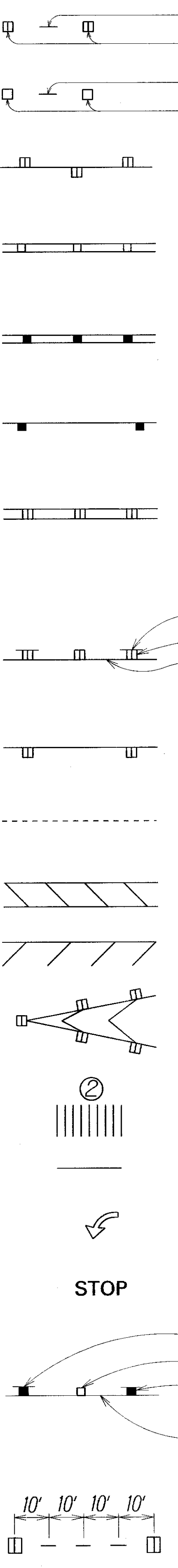
DESIGNED BY	CHECKED BY
DATE	DATE
DESIGNED BY	CHECKED BY
DATE	DATE
DESIGNED BY	CHECKED BY
DATE	DATE
DESIGNED BY	CHECKED BY
DATE	DATE
DESIGNED BY	CHECKED BY
DATE	DATE

DATE	REVISION
08/22/17	Added Pavement Reconstruction Detail, Pay Limits and Schedule, and Reversed Sidewalk Typical Section.

STATE OF HAWAII DEPARTMENT OF TRANSPORTATION HIGHWAYS DIVISION
TYPICAL SECTION AND DETAILS
KALIHI STREET RESURFACING Nimitz Highway To School Street Federal-Aid Project No.: STP-063-1(024) Not To Scale Date: April, 2017
SHEET No. 2 OF 2 SHEETS

FED. ROAD DIST. NO.	STATE	FED-AID PROJ. NO.	FISCAL YEAR	SHEET NO.	TOTAL SHEETS
HAWAII	HAW.	STP-063-1(024)	2017	ADD.23	42

LEGEND



4 each Type A Raised Pavement Markers
Type C Raised Pavement Markers @ 40'-0" o.c.

4 each Type J Raised Pavement Markers
Type D Raised Pavement Markers @ 40'-0" o.c.

8" White Stripe with Type C Raised Pavement Markers @ 20'-0" o.c. (Tape, Type I or Thermoplastic Extrusion)

4" Double Solid Yellow with Type D Raised Pavement Markers @ 20'-0" o.c. (Tape, Type I or Thermoplastic Extrusion))

4" Double Solid Yellow Stripes with Type H Raised Pavement Markers @ 20'-0" o.c. (Tape, Type II or Thermoplastic Extrusion))

4" Yellow Edge Stripe with Type H Raised Pavement Markers @ 40'-0" o.c. (Tape, Type II or Thermoplastic Extrusion))

4" Double Solid White Stripes with Type C Raised Pavement Markers @ 20'-0" o.c. (Tape, Type I or Thermoplastic Extrusion)

Lane Change Restriction Marking
4 each Type A Raised Pavement Markers
Type C Raised Pavement Markers @ 20'-0" o.c.
4" White Stripe (Tape, Type I or Thermoplastic Extrusion)

4" or 8" White Edge Stripe with Type C Raised Pavement Markers @ 40'-0" o.c. (Tape, Type II or Thermoplastic Extrusion)

4" White Guide Lines (Tape, Type III or Thermoplastic Extrusion except for bus bays)

Transverse Median Marking (Tape, Type II or Thermoplastic Extrusion)

Transverse Shoulder Marking (Tape, Type II or Thermoplastic Extrusion)

Channelizing Island or Deceleration Lane Gore (Tape, Type II or Thermoplastic Extrusion)

Crosswalk and Stop Line. All Stop Lines shall be 10'-0" from Crosswalk unless otherwise noted. The circled number indicates the number of lanes for payment (Tape, Type III or Thermoplastic Extrusion)

Pavement Arrow (Tape, Type III or Thermoplastic Extrusion)

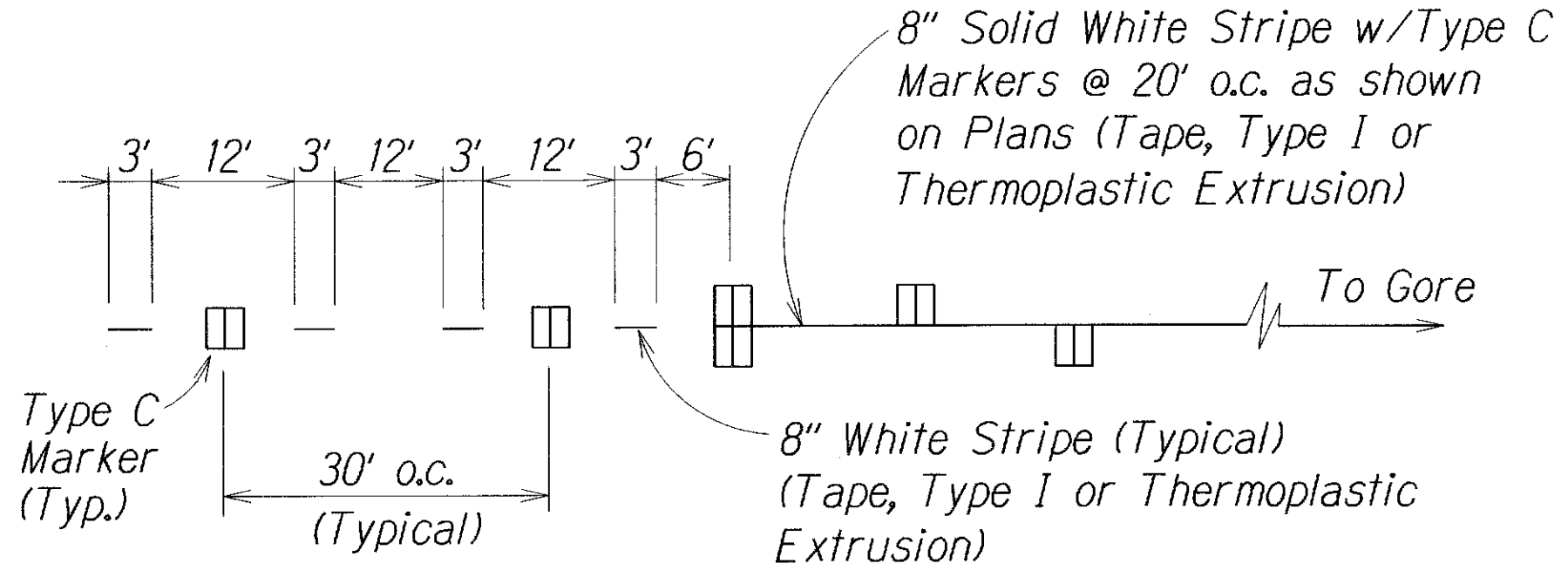
STOP
Pavement Word (Tape, Type III or Thermoplastic Extrusion)

4 Each Type J Raised Pavement Markers
Type D Raised Pavement Markers @ 40'-0" o.c.
Type H Raised Pavement Markers (Reflective Surface facing no-passing direction)
4" Single Solid Yellow Stripe (Tape, Type I or Thermoplastic Extrusion)

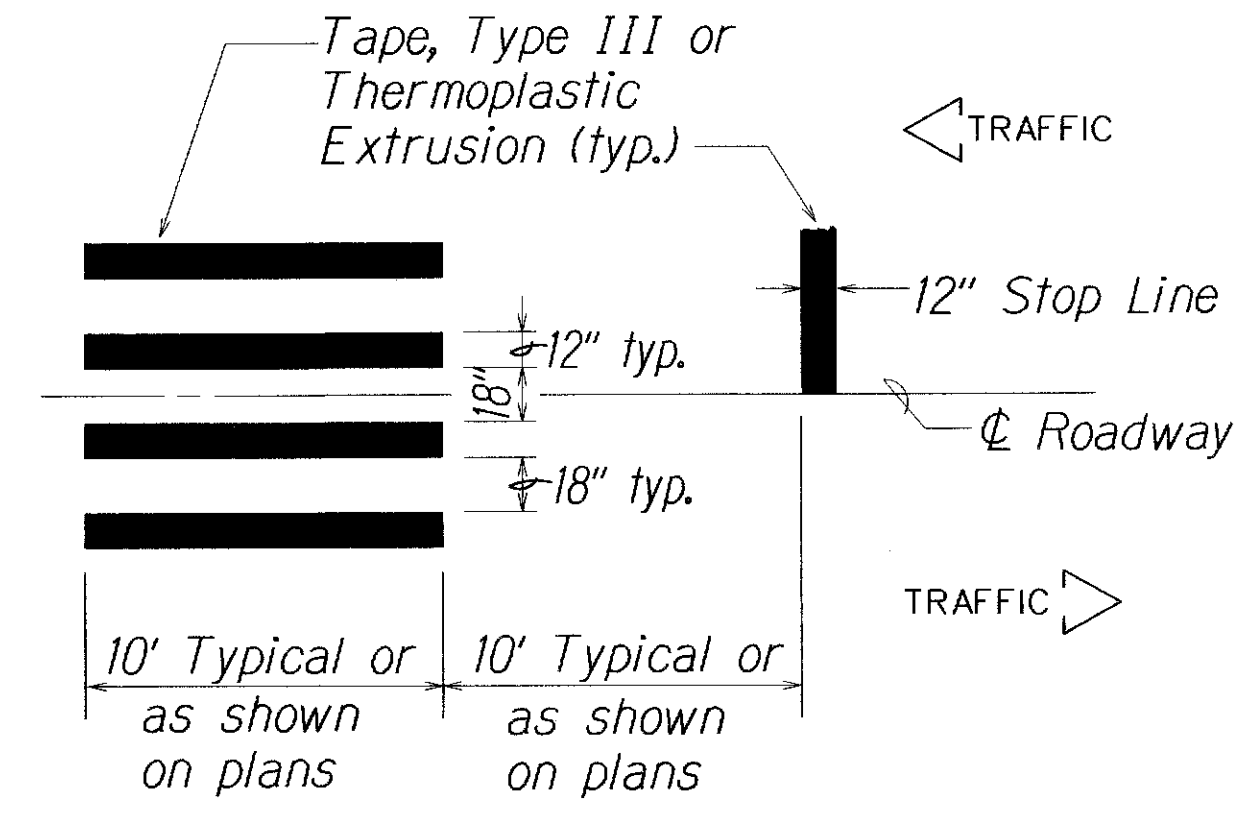
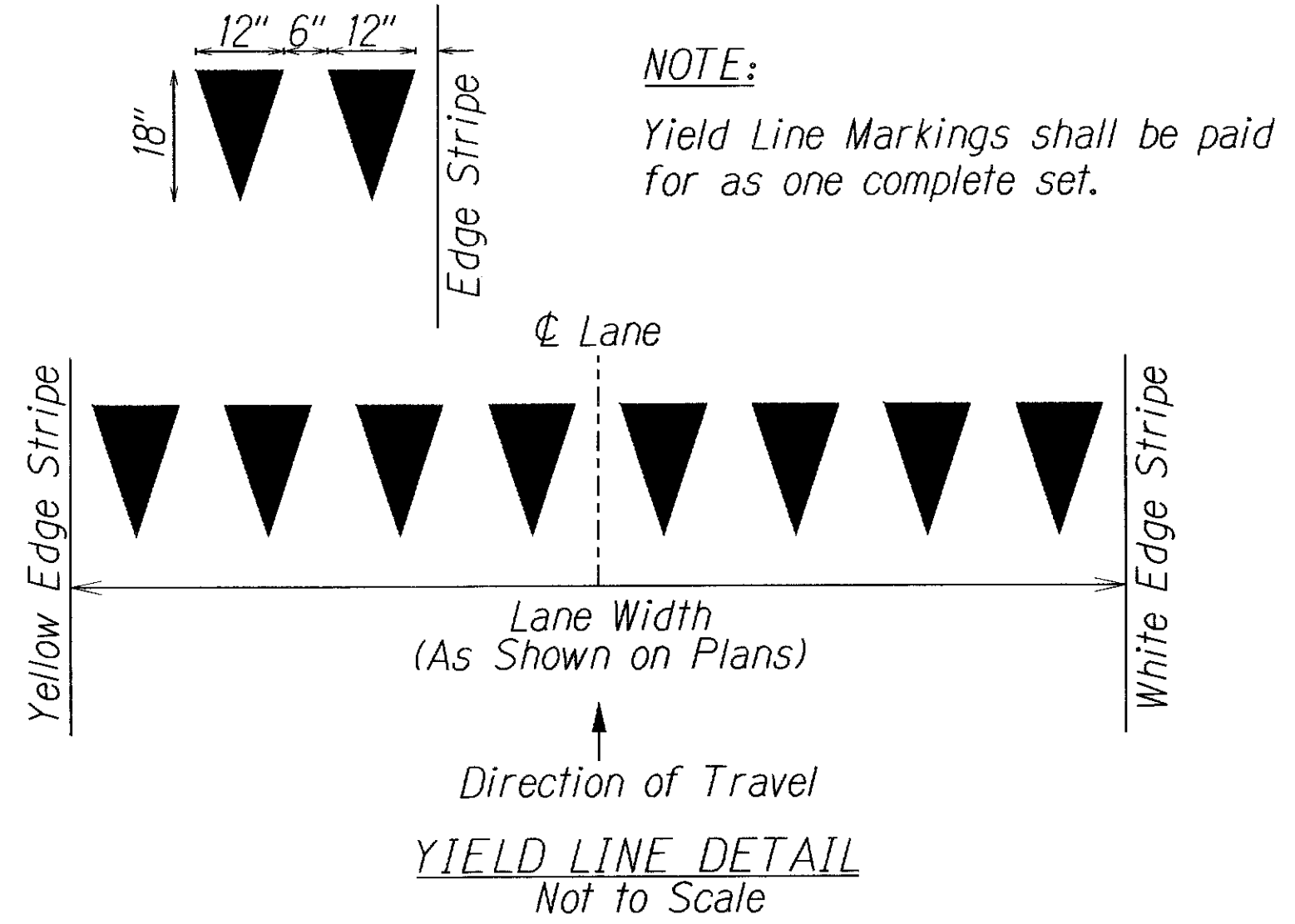
Extension of Edge Line, 4" Wide x 2'-0" Long White Stripe @ 10'-0" o.c. w/Type C Markers @ 40'-0" o.c. (Tape, Type III or Thermoplastic Extrusion)

NOTES

- Layout of pavement markings and striping shall be done by the Contractor and approved by the Engineer prior to any installation work.
- Existing pavement markings not incorporated in the final traffic pattern shall be removed as directed by the Engineer. Costs shall be incidental to the various pavement marking items.
- Raised pavement markers shall not be installed within crosswalks.
- Final locations of all signs shall be approved by the Engineer prior to any installation work.
- Existing signs not shown on these plans shall remain as posted unless otherwise directed by the Engineer. Removal and disposal of existing signs and/or posts as designated on these plans shall be incidental to the various signing items.
- Final locations of all Stop Lines shall be approved by the Engineer prior to installation.
- All pavement striping shall be as noted on the legend or plans.
- All preformed pavement marking tapes over existing pavement shall be applied with an approved primer as recommended by the tape manufacturer and as approved by the Engineer. The primer shall be allowed to dry to the tacky stage prior to tape application.
- All pedestrian warning signs with supplemental sign shall be on a fluorescent yellow-green retroreflective background with a black legend and border.



LANE DROP MARKING
Not to Scale



CROSSWALK STRIPING DETAIL

8/17/17

Move Traffic Signal Table to Plan Sheet No. ADD.38

DATE	REVISION

STATE OF HAWAII

DEPARTMENT OF TRANSPORTATION

HIGHWAYS DIVISION

PAVEMENT MARKING

LEGEND, DETAILS & NOTES

KALIHI STREET RESURFACING

Nimitz Highway to School Street

Federal Aid Project No. STP-063-1(024)

Scale: As Shown

Date: May 2017

SHEET No. 71 OF 20 SHEETS

FED. ROAD DIST. NO.	STATE	FED. AID PROJ. NO.	FISCAL YEAR	SHEET NO.	TOTAL SHEETS
HAWAII	HAW.	STP-063-1(024)	2017	ADD.38	42

NEW TRAFFIC SIGNAL ASSEMBLY W/ LED SIGNAL LIGHTS & TRAFFIC SIGNAL BACK PLATE*				
STREET NAME/INTERSECTION	SOUTH BOUND (SB)		NORTH BOUND (NB)	
	STANDARD TRAFFIC SIGNAL HEAD	PROGRAMMABLE VISIBILITY TRAFFIC SIGNAL HEAD	STANDARD TRAFFIC SIGNAL HEAD	PROGRAMMABLE VISIBILITY TRAFFIC SIGNAL HEAD
Nimitz Highway	—	—	1	1
Dillingham Boulevard	—	—	—	—
Kaumualii Street	2	—	2	—
King Street	2	1	2	1
Beckley Street	2	—	2	—

* Replace existing mast arm mounted traffic signal head (including programmable-visibility signal heads) with new traffic signal head with LED optical units and traffic signal back plate.

ORIGINAL PLAN	DESIGNED BY	DATE
NOTE BOOK	TRACED BY	
	DESIGNED BY	
	QUANTITIES BY	
	CHECKED BY	

8/17/17	Duplicate Sheet - Deleted Notes and Symbols. Added Traffic Signal Table.
DATE	REVISION
STATE OF HAWAII DEPARTMENT OF TRANSPORTATION HIGHWAYS DIVISION	
TRAFFIC SIGNAL MISCELLANEOUS	
KALIHI STREET RESURFACING Nimitz Highway to School Street Federal Aid Project No. STP-063-1(024)	
Scale: As Shown	Date: July 2017
SHEET No. T16 OF 20 SHEETS	