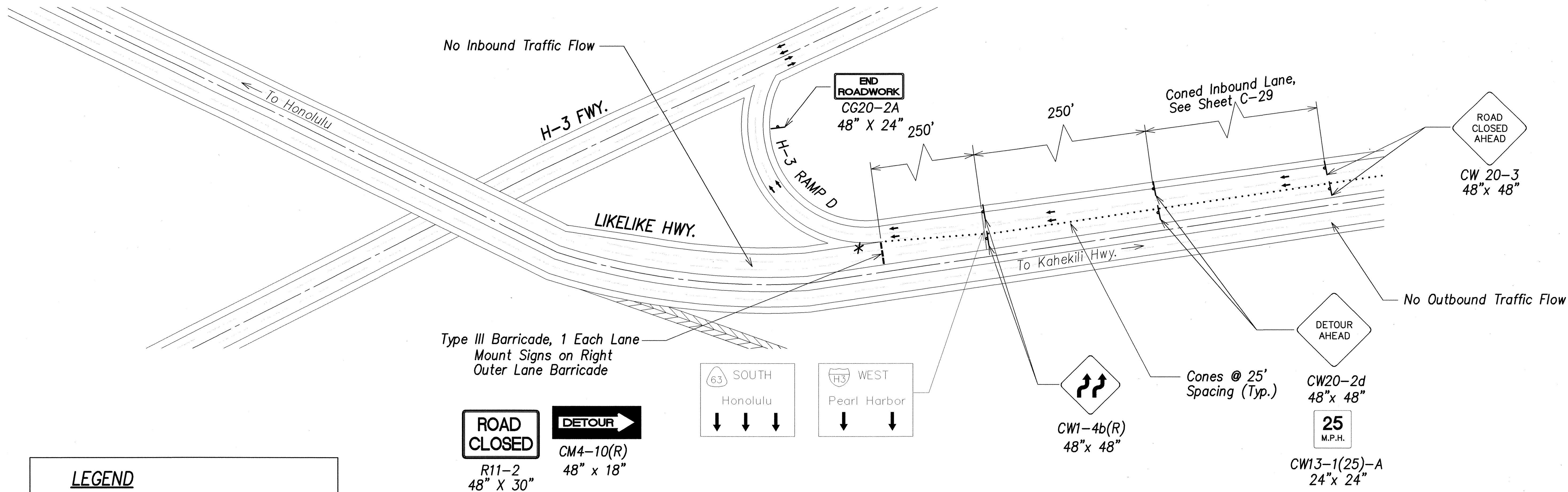


FED. ROAD DIST. NO.	STATE	FED. AID PROJ. NO.	FISCAL YEAR	SHEET NO.	TOTAL SHEETS
HAWAII	HAW.	STP-063-1(22)	2003	29	69

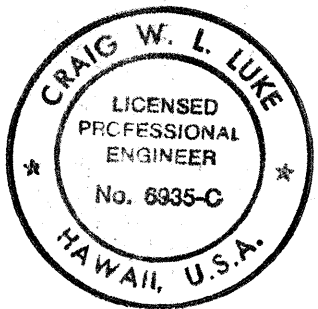


LEGEND

- - Cone
- | - Construction Warning Sign w/ Low-Intensity Flasher
- - Direction Of Traffic
- * - Police Officer
- ┌ - Type III Barricade with Low-Intensity Flasher and Sand Weight Bag(s)

**INBOUND TUNNEL CLOSURE – LIKELIKE HIGHWAY AND H-3 RAMP D
TRAFFIC CONTROL PLAN (Kaneohe Side Tunnel)**
Not To Scale

ORIGINAL PLAN	DATE
DESIGNED BY	
NOTED BY	
CHECKED BY	
No.	



THIS WORK WAS PREPARED BY ME OR UNDER MY SUPERVISION AND CONSTRUCTION OF THIS PROJECT WILL BE UNDER MY OBSERVATION.

SIGNATURE: *[Signature]* April 30, 2004
EXPIRATION DATE OF THE LICENSE

STATE OF HAWAII
DEPARTMENT OF TRANSPORTATION
HIGHWAYS DIVISION

INBOUND TUNNEL CLOSURE
TRAFFIC CONTROL PLAN-Kaneohe Side of Tunnel
LIKELIKE HIGHWAY
Wilson Tunnel Improvements
Leak and Crack Remediation
F. A. Project No. STP-063-1(22)
Scale: Not to scale Date: April 24, 2003

SHEET No. C-28 OF 30 SHEETS

