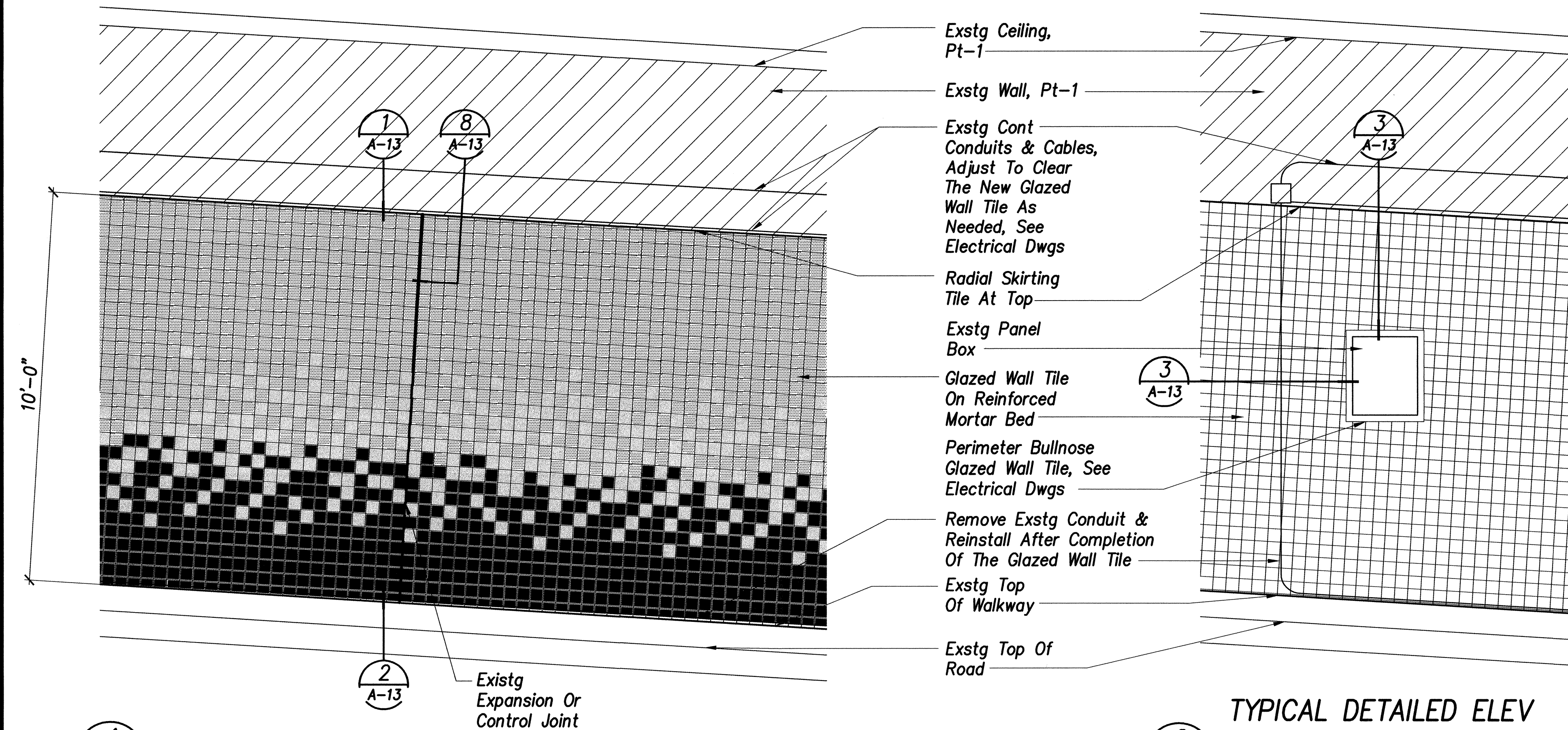


FED. ROAD DIST. NO.	STATE	FED. AID PROJ. NO.	FISCAL YEAR	SHEET NO.	TOTAL SHEETS
HAWAII	HAW.	STP-063-1(22)	2003	40	69



1
A-10

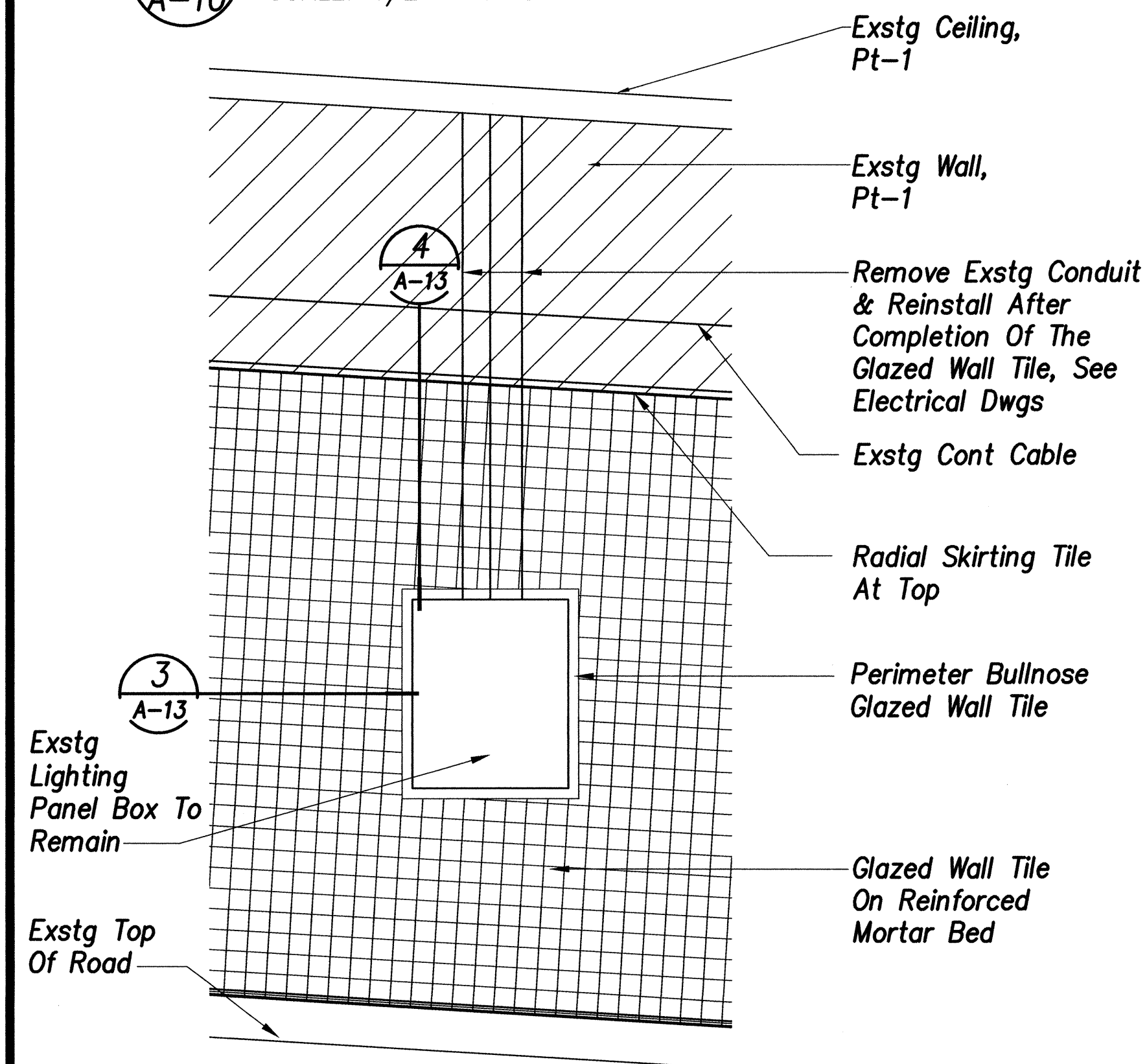
TYPICAL PATTERN

SCALE: 1/2" = 1'-0"

2
A-10

TYPICAL DETAILED ELEV AT EXISTING PANEL BOX

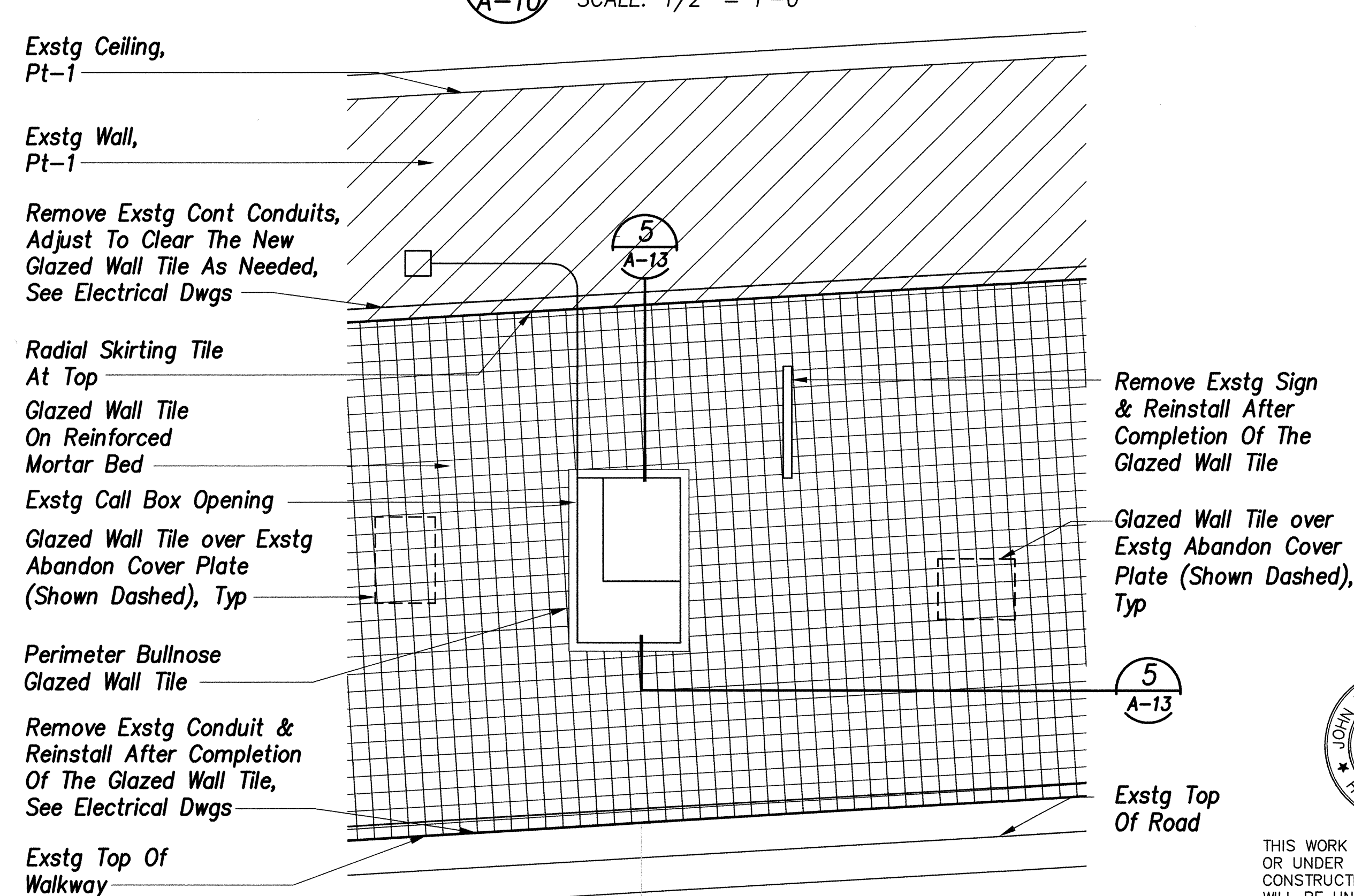
SCALE: 1/2" = 1'-0"



3
A-10

TYPICAL DETAILED ELEV AT EXISTING LIGHTING PANEL BOX

SCALE: 1/2" = 1'-0"



4
A-10

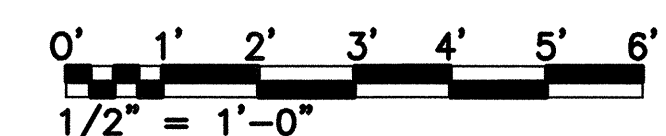
TYPICAL DETAILED ELEV AT EXISTING CALL BOX

SCALE: 1/2" = 1'-0"

LEGEND

Paint	
Glazed Wall Tile	
Gwt-1	
Gwt-2	
Gwt-3	

GRAPHIC SCALES



SURVEY PLANNED BY	DATE
DRAWN BY	
TRACED BY	
DESIGNED BY	
QUANTITIES BY	
CHECKED BY	
ORIGINAL PLAN	No.
NOTE BOOK	

JOHN ALLAN ADVERSALO
LICENSED PROFESSIONAL ARCHITECT
No. 5709
HAWAII, U.S.A.

THIS WORK WAS PREPARED BY ME OR UNDER MY SUPERVISION AND CONSTRUCTION OF THIS PROJECT WILL BE UNDER MY OBSERVATION.

April 30, 2004

SIGNATURE

EXPIRATION DATE OF THE LICENSE

STATE OF HAWAII
DEPARTMENT OF TRANSPORTATION
HIGHWAYS DIVISION

DETAILED ELEVATIONS

LIKELIKE HIGHWAY

Wilson Tunnel Improvements

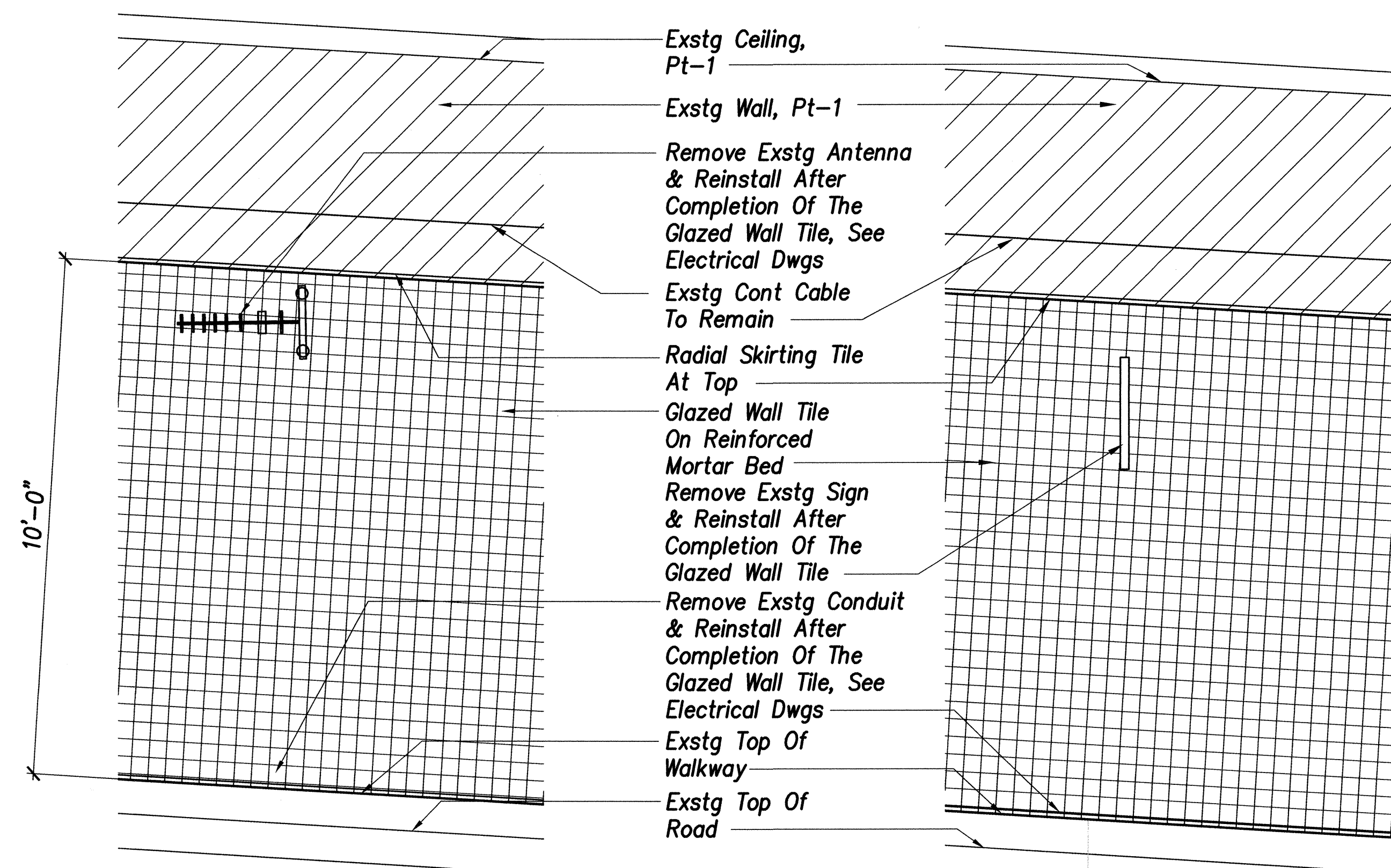
Leak and Crack Remediation

F. A. Project No. STP-063-1(22)

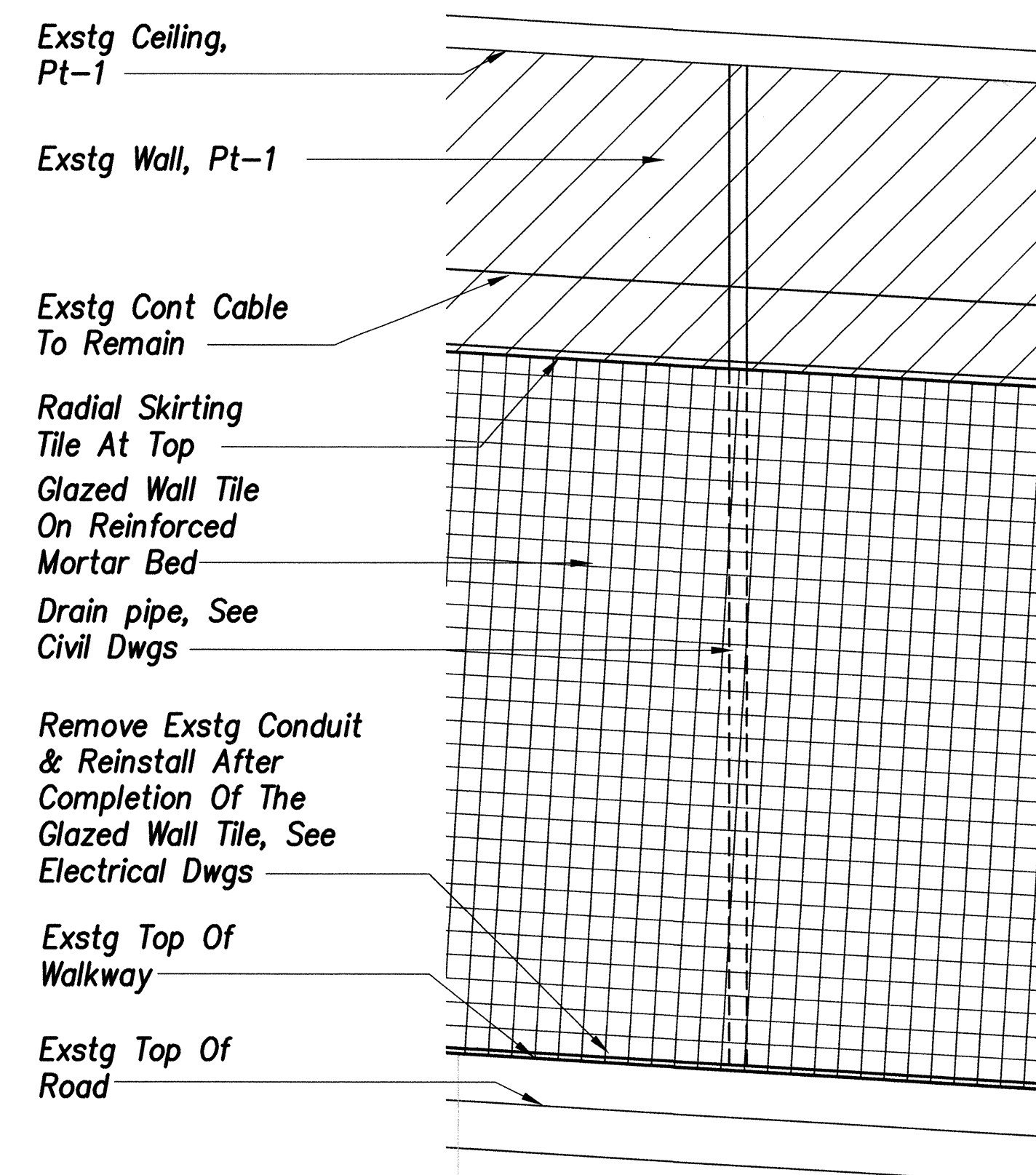
Scale: AS NOTED Date: April 24, 2003

SHEET No. A-10 OF 13 SHEETS

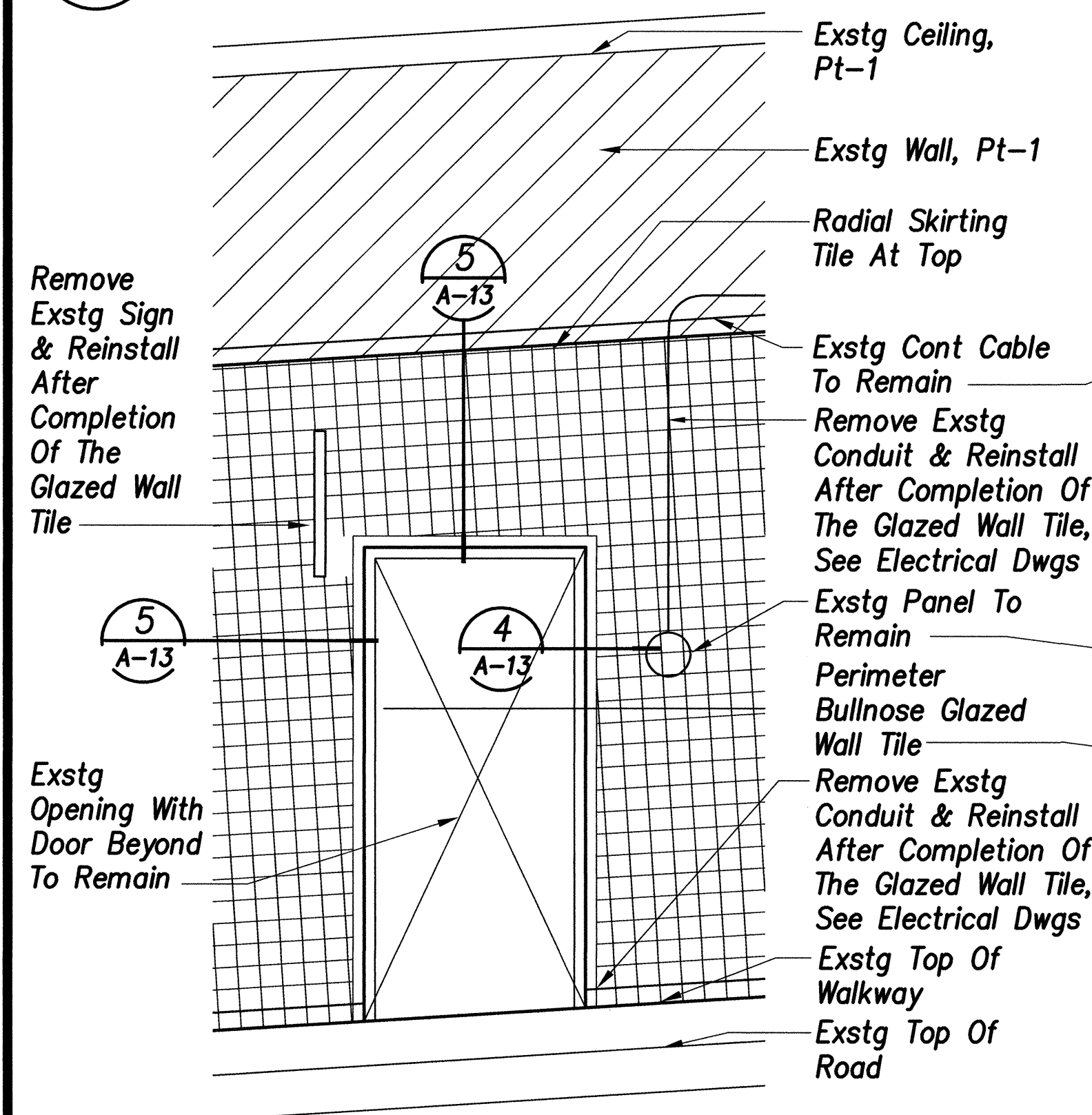
FED. ROAD DIST. NO.	STATE	FED. AID PROJ. NO.	FISCAL YEAR	SHEET NO.	TOTAL SHEETS
HAWAII	HAW.	STP-063-1(22)	2003	41	69



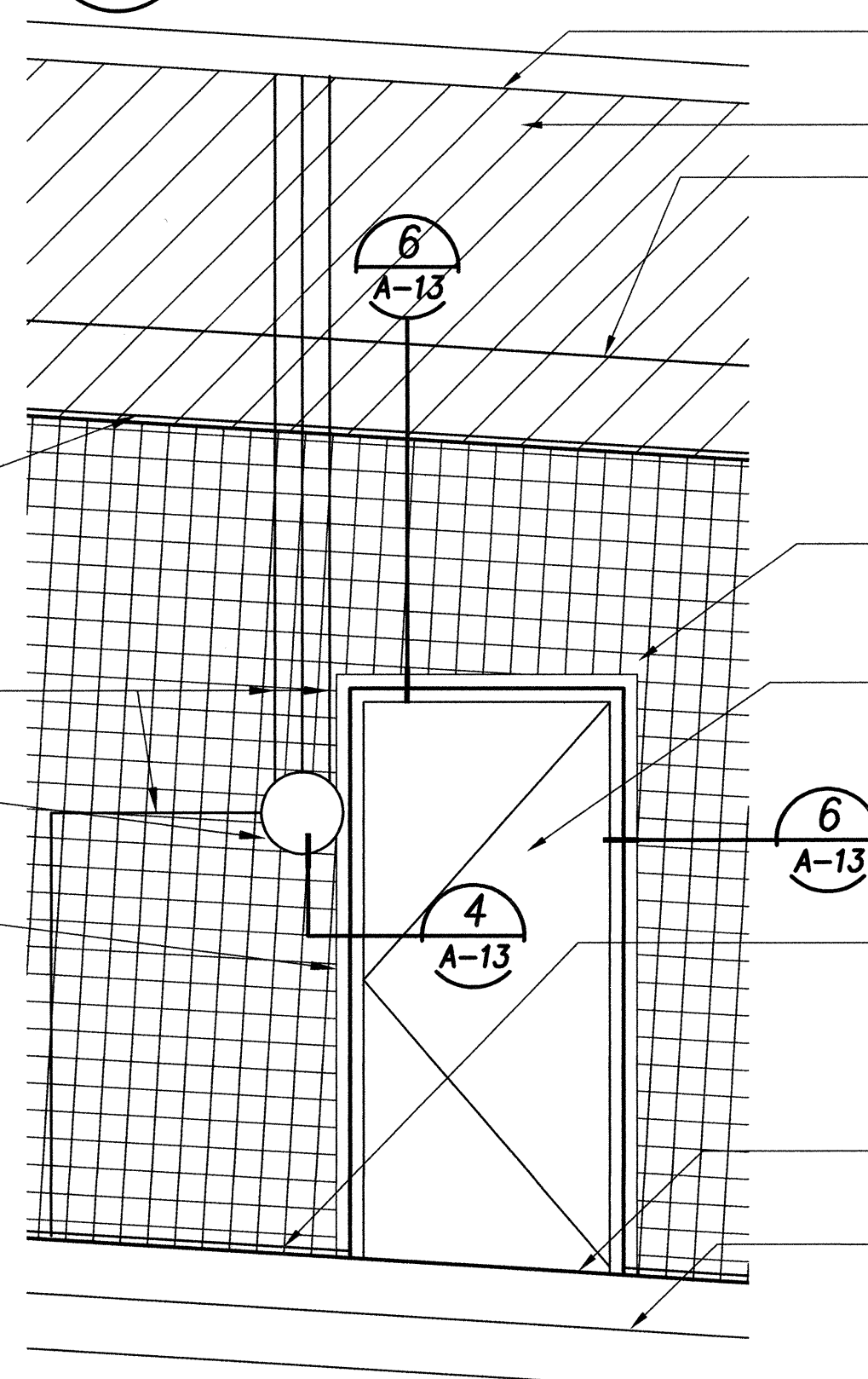
1
A-11
TYPICAL DETAILED ELEV AT EXISTING ANTENNA
SCALE: 1/2" = 1'-0"



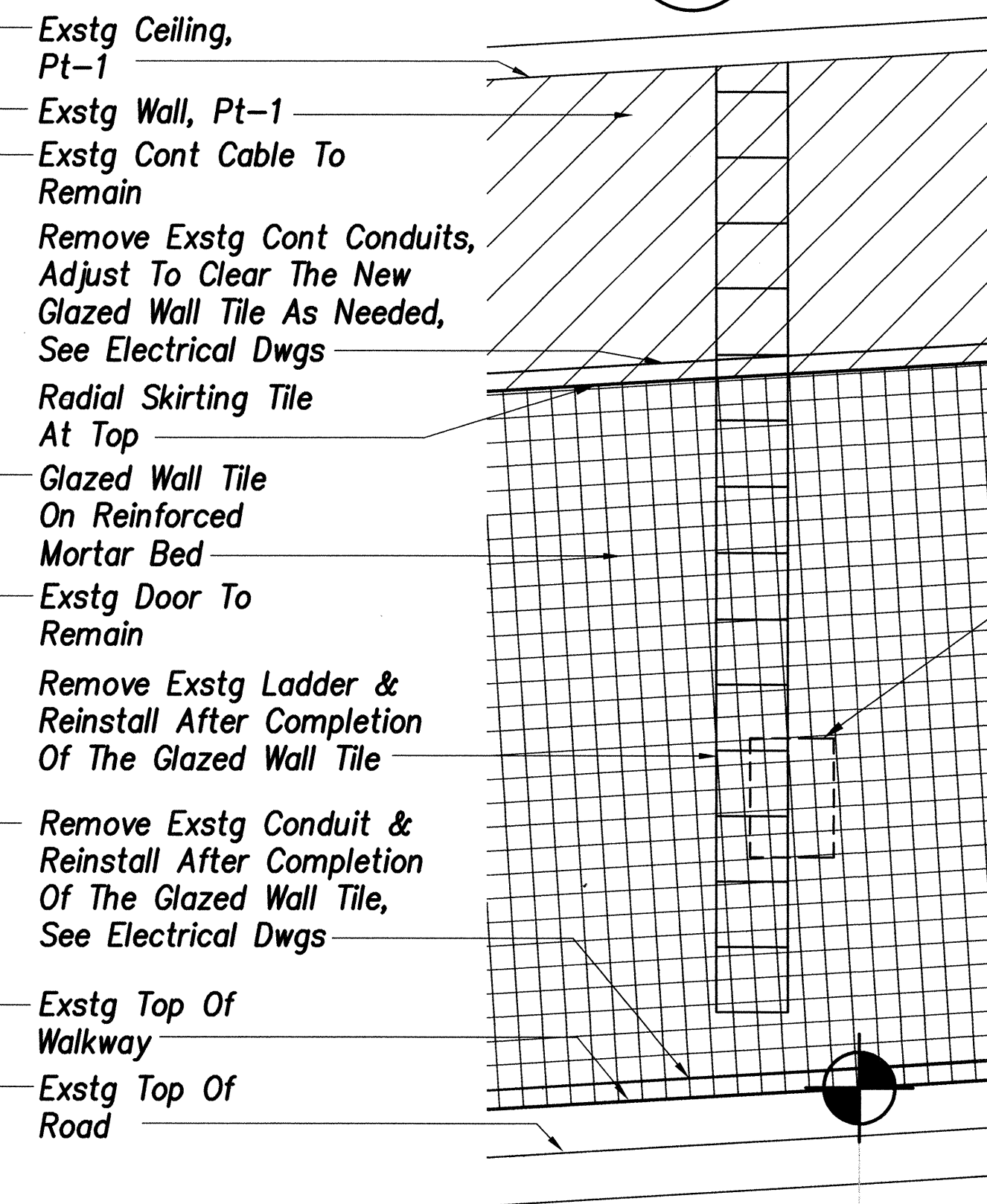
3
A-11
TYPICAL DRAIN PIPE DETAILED ELEVATION
SCALE: 1/2" = 1'-0"



4
A-11
ATYPICAL DETAILED ELEV AT EXSTG OPENING
SCALE: 1/2" = 1'-0"



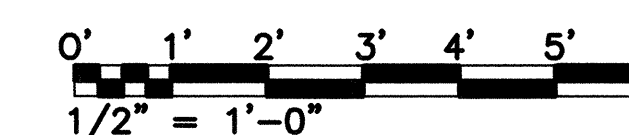
5
A-11
ATYPICAL DETAILED ELEV AT EXSTG DOOR & PANEL BOX
SCALE: 1/2" = 1'-0"



6
A-11
ATYPICAL DETAILED ELEV AT EXSTG LADDER
SCALE: 1/2" = 1'-0"



GRAPHIC SCALES



THIS WORK WAS PREPARED BY ME OR UNDER MY SUPERVISION AND CONSTRUCTION OF THIS PROJECT WILL BE UNDER MY OBSERVATION.

John Allan Adversano
APR 30, 2004
SIGNATURE EXPIRATION DATE OF THE LICENSE

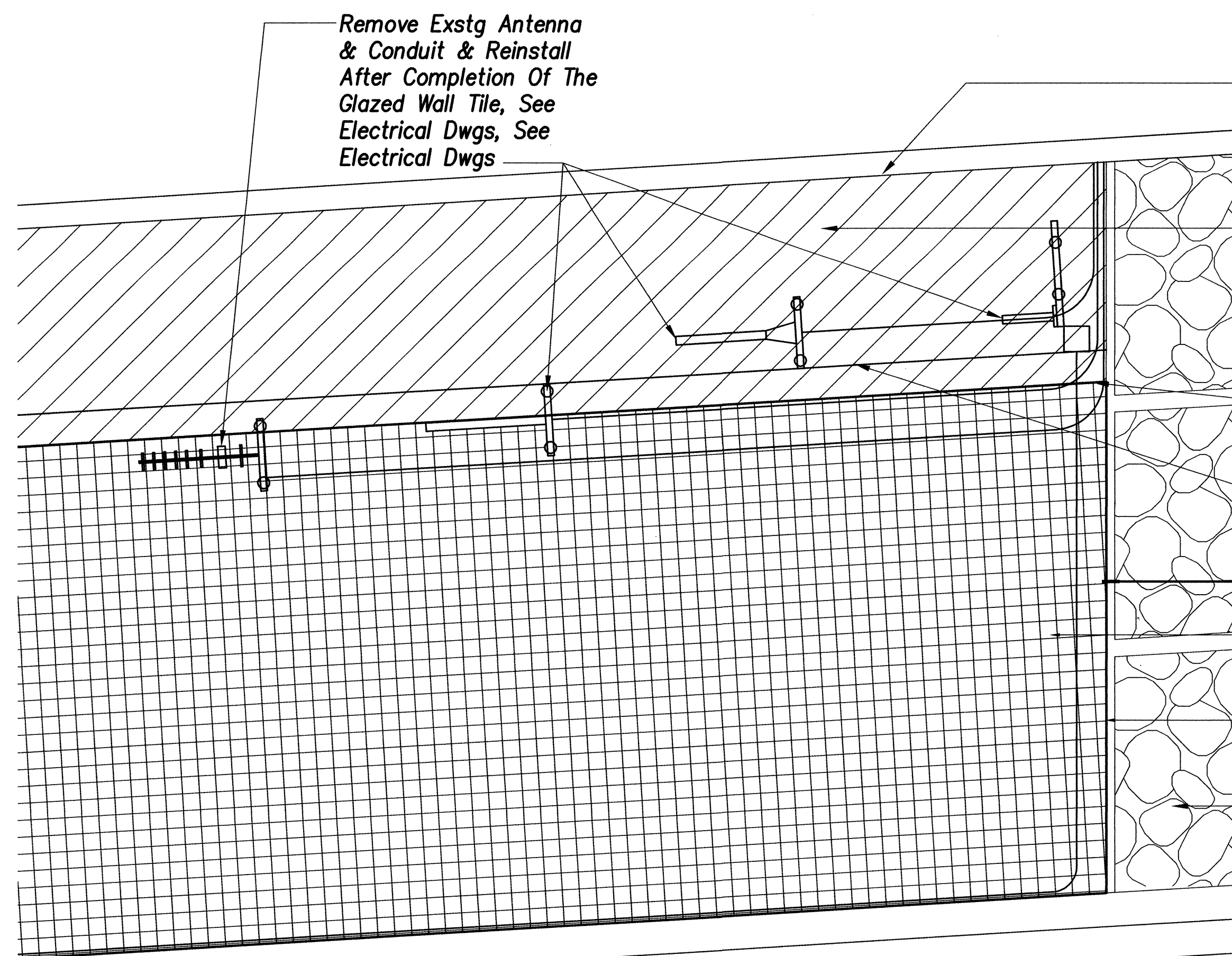
STATE OF HAWAII
DEPARTMENT OF TRANSPORTATION
HIGHWAYS DIVISION

DETAILED ELEVATIONS

LIKELIKE HIGHWAY
Wilson Tunnel Improvements
Leak and Crack Remediation
F. A. Project No. STP-063-1(22)
Scale: AS NOTED Date: April 24, 2003

SHEET No. A-11 OF 13 SHEETS

FED. ROAD DIST. NO.	STATE	FED. AID PROJ. NO.	FISCAL YEAR	SHEET NO.	TOTAL SHEETS
HAWAII	HAW.	STP-063-1(22)	2003	42	69



1
ATYPICAL DETAILED ELEVATION
AT EXISTING ANTENNAS
SCALE: 1/2" = 1'-0"

Exstg Ceiling
Pt-1

Exstg Wall
Pt-1

Radial Skirting Tile
At Top

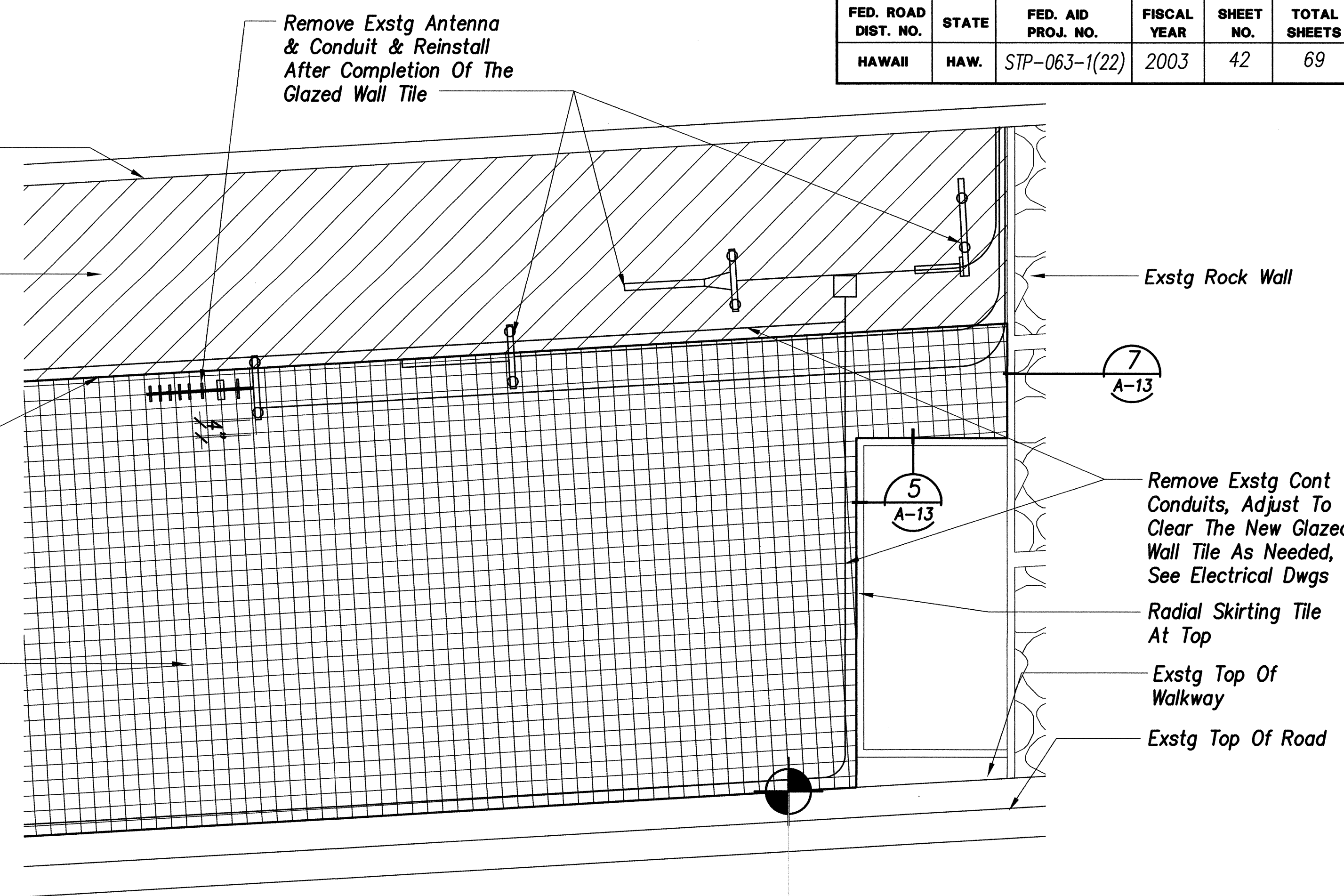
Exstg Cont Cable
To Remain

7
A-13

Glazed Wall Tile On
Reinforced Mortar
Bed

Radial Skirting Tile
At Top

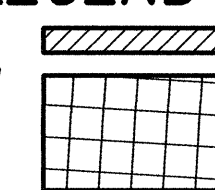
Exstg Rock Wall



2
ATYPICAL DETAILED ELEVATION
AT EXISTING ANTENNAS
SCALE: 1/2" = 1'-0"

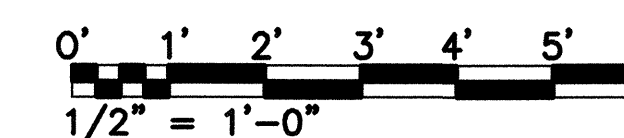
LEGEND

Paint
Glazed
Wall
Tile



ORIGINAL PLAN	SURVEY PLOTTED BY	DATE
NOTE BOOK	DRAWN BY	
	DESIGNED BY	
	QUANTITIES BY	
	CHECKED BY	
No.		

GRAPHIC SCALES



THIS WORK WAS PREPARED BY ME
OR UNDER MY SUPERVISION AND
CONSTRUCTION OF THIS PROJECT
WILL BE UNDER MY OBSERVATION.

John Allan Adversano
SIGNATURE
APR 30, 2004
EXPIRATION DATE
OF THE LICENSE

STATE OF HAWAII
DEPARTMENT OF TRANSPORTATION
HIGHWAYS DIVISION

DETAILED ELEVATIONS
LIKELIKE HIGHWAY

Wilson Tunnel Improvements
Leak and Crack Remediation
F. A. Project No. STP-063-1(22)

Scale: AS NOTED Date: April 24, 2003

SHEET No. A-12 OF 13 SHEETS