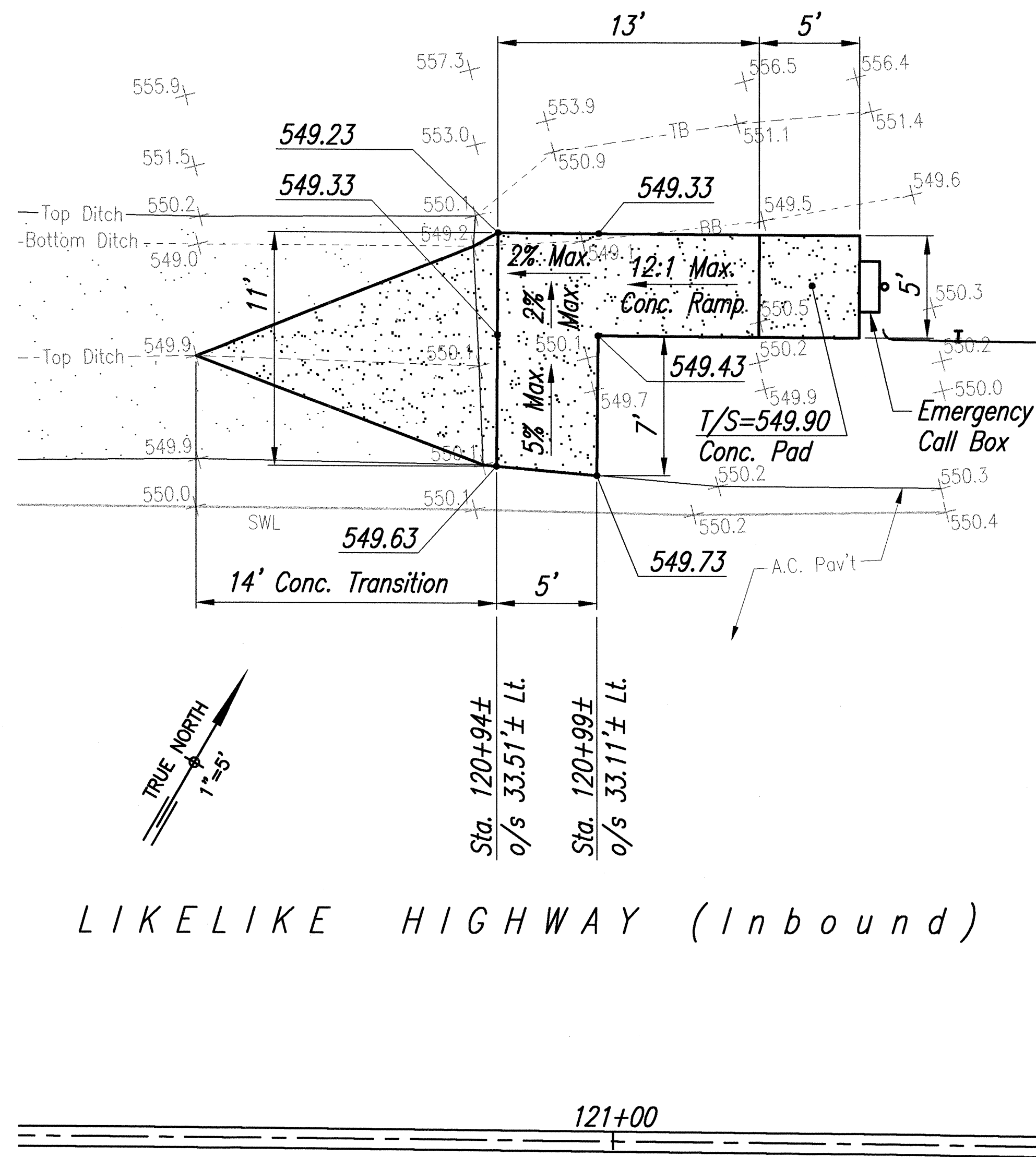
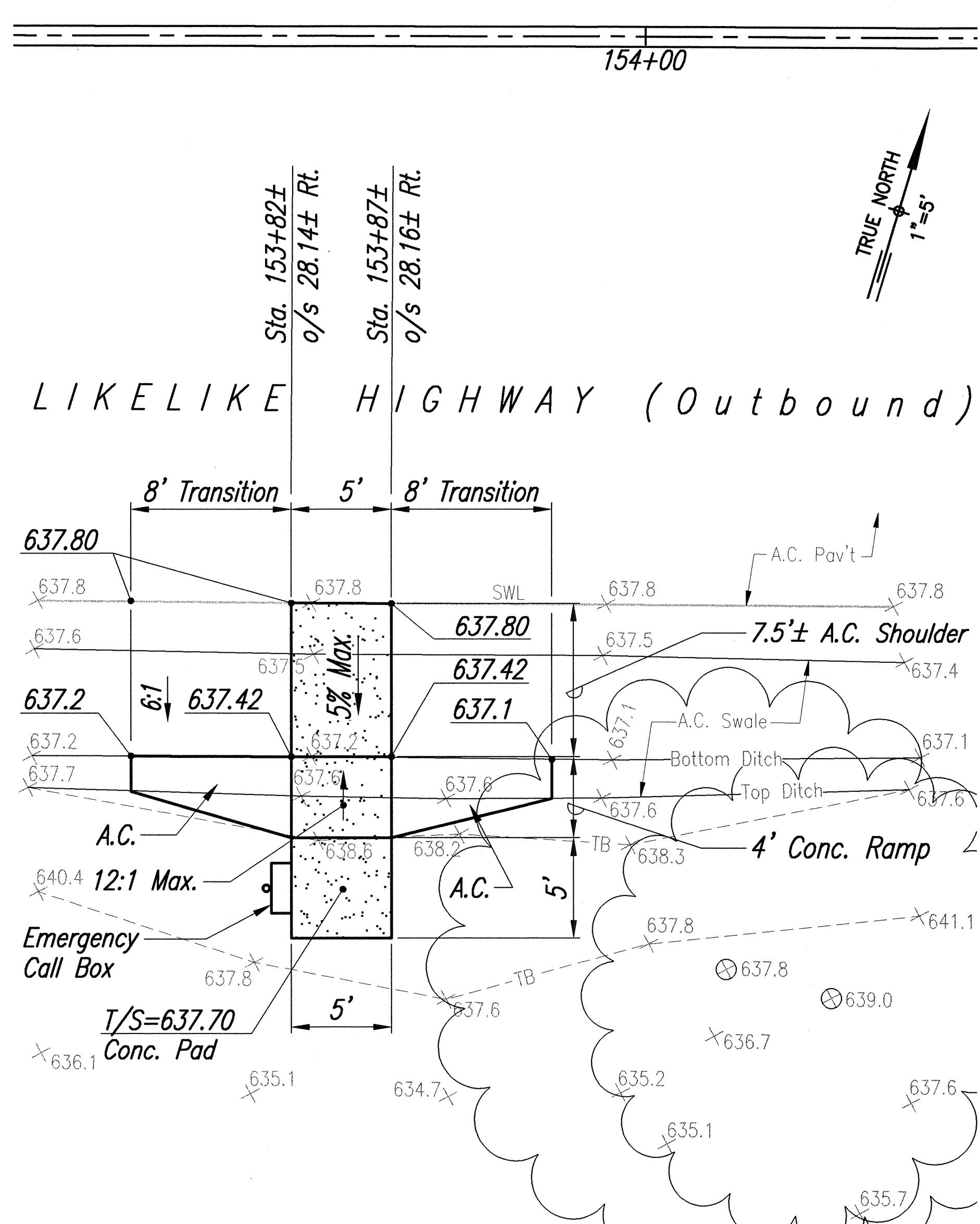


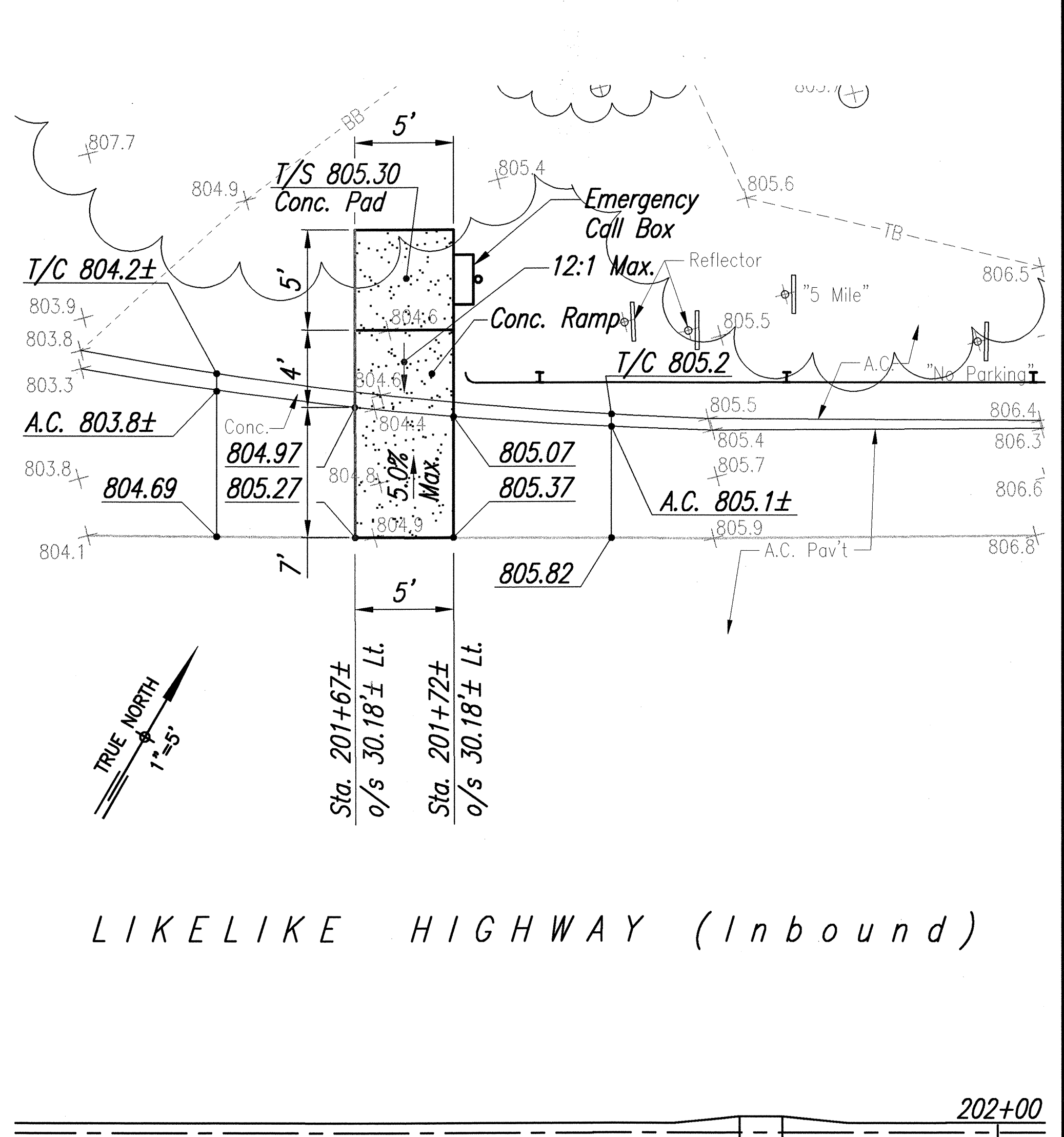
FED. ROAD DIST. NO.	STATE	PROJ. NO.	FISCAL YEAR	SHEET NO.	TOTAL SHEETS
HAWAII	HAW.	CM-STP-063-1(21)	2002	150	187



EMERGENCY CALL BOX (INBOUND STA. 121+00±)
Scale: 1"=5'

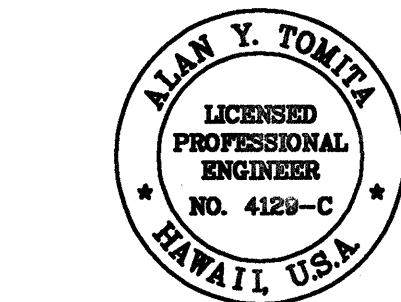


EMERGENCY CALL BOX (OUTBOUND STA. 153+82±)
Scale: 1"=5'



EMERGENCY CALL BOX (INBOUND STA. 201+68±)
Scale: 1"=5'

ORIGINAL PLAN	SURVEY PLOTTED BY	DATE
NOTE BOOK	DRAWN BY	" "
	DESIGNED BY	" "
	CHECKED BY	" "
		" "
		" "
		" "
		" "
		" "
		" "



THIS WORK WAS PREPARED BY ME
OR UNDER MY SUPERVISION.

Alan Y. Tomita

STATE OF HAWAII
DEPARTMENT OF TRANSPORTATION
HIGHWAYS DIVISION

EMERGENCY CALL BOX GRADING PLAN

LIKELIKE HIGHWAY RESURFACING
Emmeline Place to the Wilson Tunnel
F. A. Project No. CM-STP-063-1(21)

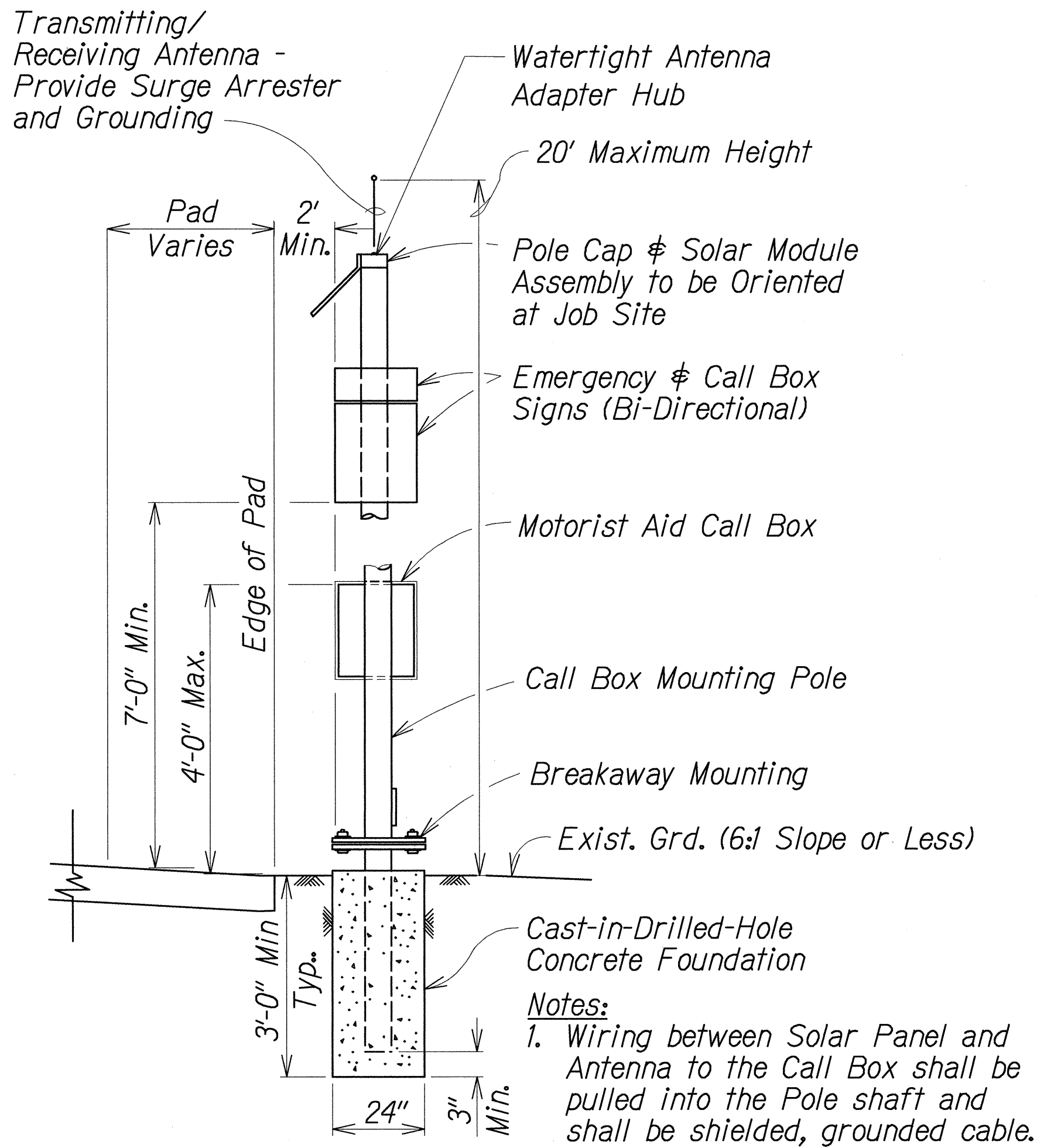
Scale: As Shown Date: December, 2001

SHEET No. 1 OF 4 SHEETS

FED. ROAD DIST. NO.	STATE	PROJ. NO.	FISCAL YEAR	SHEET NO.	TOTAL SHEETS
HAWAII	HAW.	CM-STP-063-1(21)	2002	151	187

GENERAL NOTES

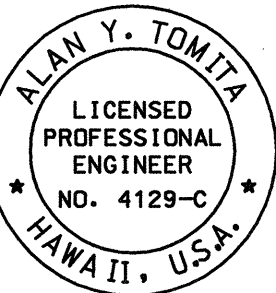
1. The Contractor is reminded of the requirements of Subsection 108.01 - Subletting of Contract, which requires him to perform work amounting to not less than 50 percent of the total contract cost less deductible items. Non-compliance with this Subsection may be grounds for rejection of bid.
2. The Contractor's attention is directed to the following Sections of the Special Provisions: Subsection 107.13 - Public Convenience and Safety, Subsection 107.21 - Contractor's Responsibility for Utility Property and Services, Section 645 - Traffic Control.
3. At the end of each day's work, the Contractor shall remove all equipment and other obstructions to permit free and safe passage of public traffic.
4. The exact locations of Emergency Call Box units shall be determined in the field by the Engineer.
5. Existing structures and utilities damaged by the Contractor shall be repaired by the Contractor at his expense.
6. Asphalt concrete walkway from pedestrian pad to edge of pavement shall not exceed a maximum slope of 20:1. See Plan Sheet No. 145 for detail.
7. If asphalt concrete walkway from pedestrian pad to edge of pavement exceeds the maximum slope of 20:1, a concrete wheelchair ramp shall be constructed. See Plan Sheet No. 152 for detail.
8. Provide Call Box identification tag, clearly visible on Sign.



SIDE VIEW

TYPICAL INSTALLATION

ORIGINAL PLAN	SURVEY PLOTTED BY	DATE
NOTE BOOK	DRAWN BY	
	DESIGNED BY	
	CHECKED BY	

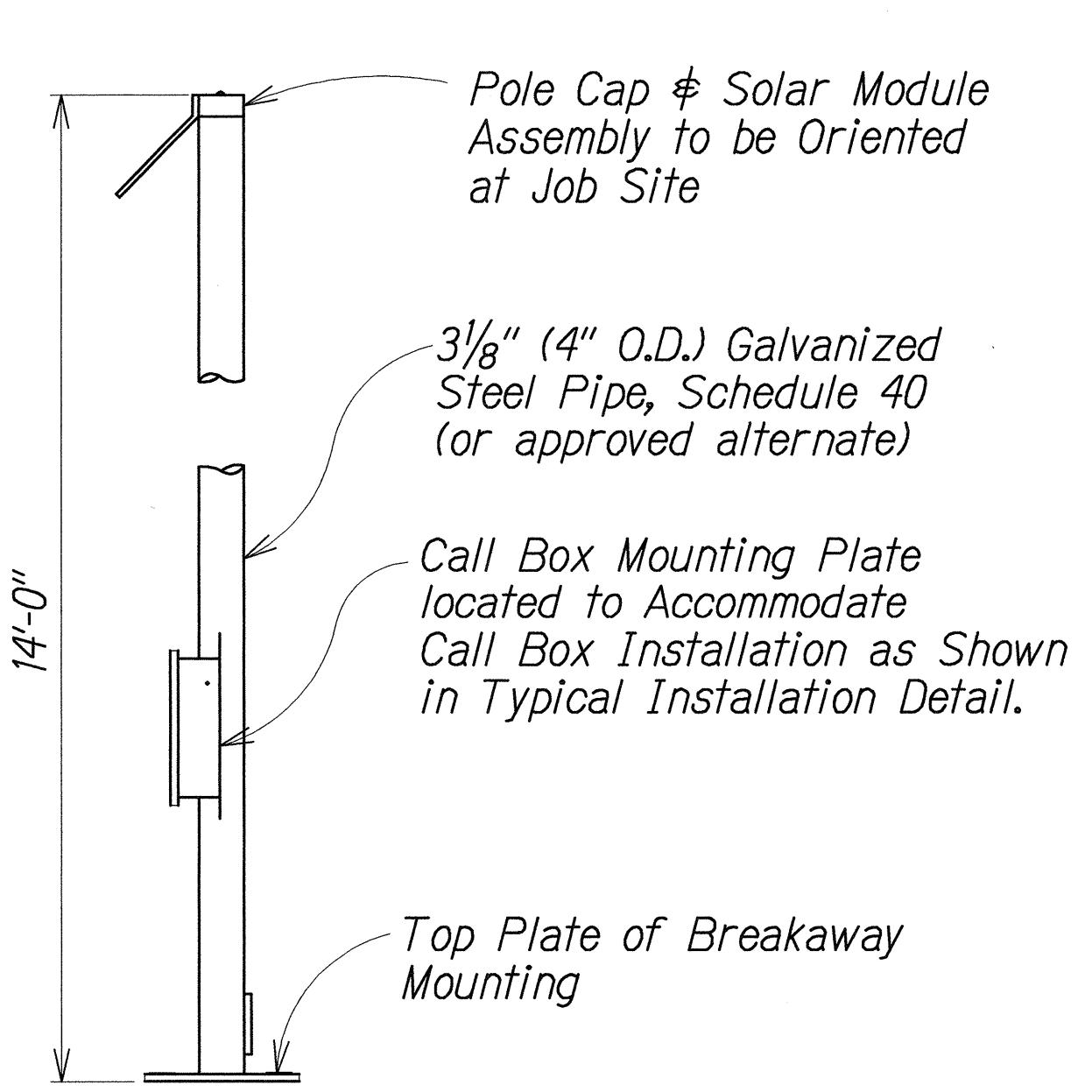


THIS WORK WAS PREPARED BY ME OR UNDER MY SUPERVISION.

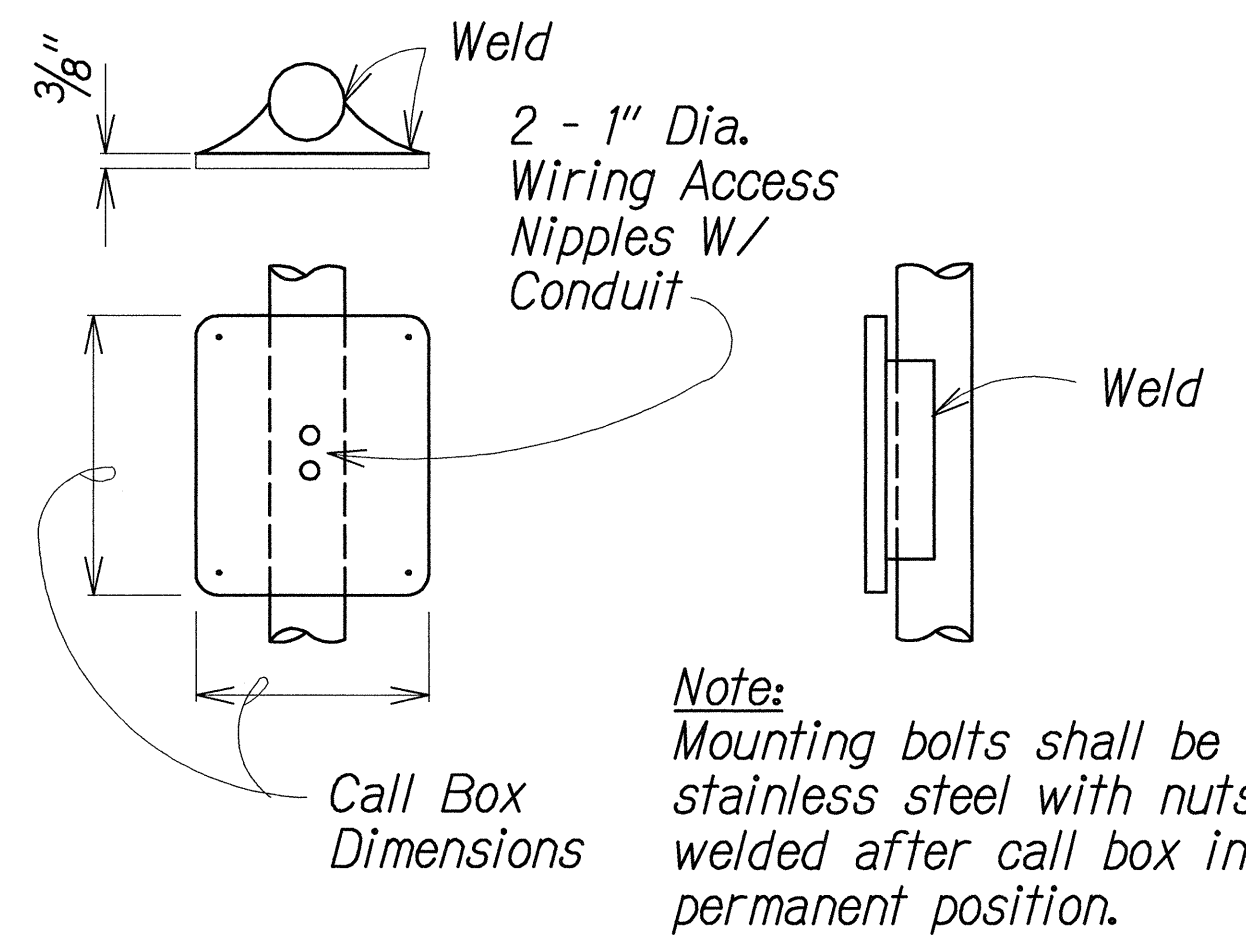
Alan Y. Tomita

STATE OF HAWAII
DEPARTMENT OF TRANSPORTATION
HIGHWAYS DIVISION
**GENERAL NOTES & TYPICAL
INSTALLATION DETAIL**
LIKELIKE HIGHWAY RESURFACING
Emmeline Place to the Wilson Tunnel
F. A. Project No. CM-STP-063-1(21)
Scale: Not to Scale Date: December, 2001
SHEET No. 2 OF 4 SHEETS

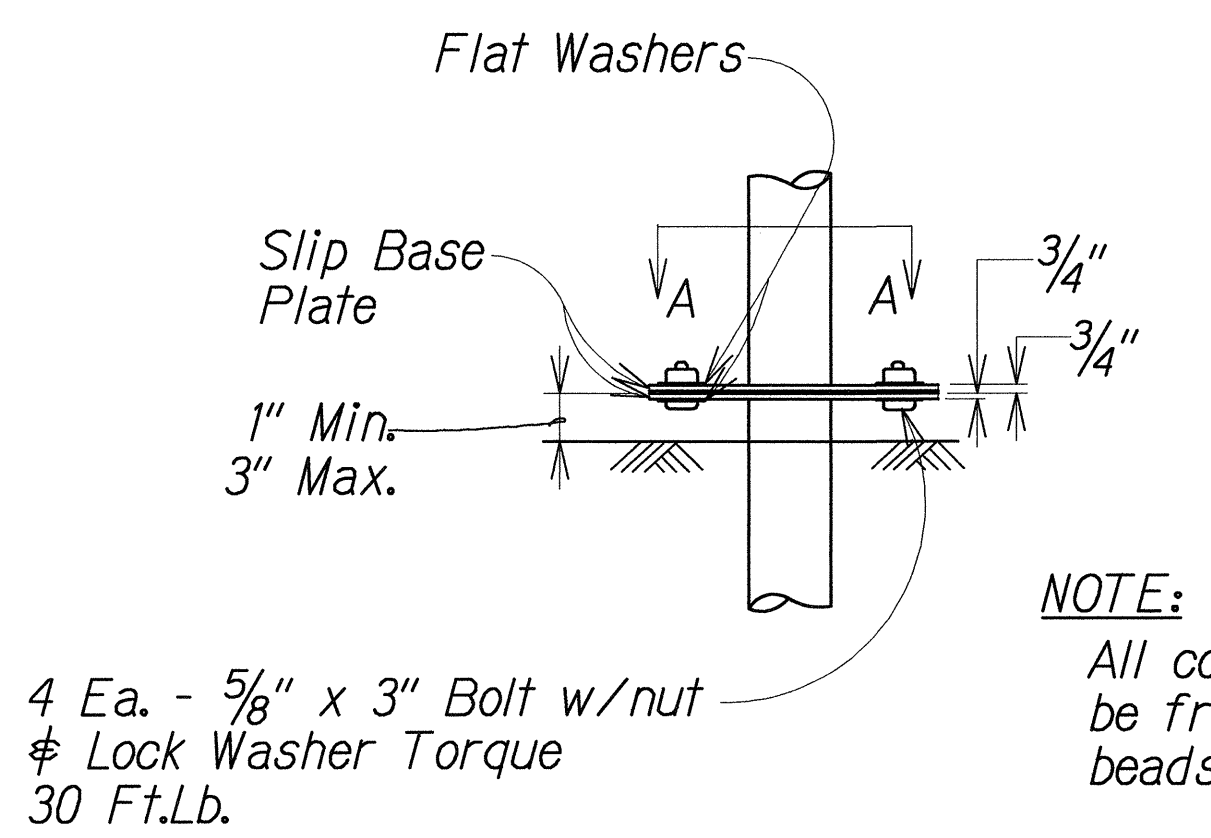
FED. ROAD DIST. NO.	STATE	PROJ. NO.	FISCAL YEAR	SHEET NO.	TOTAL SHEETS
HAWAII	HAW.	CM-STP-063-1(21)	2002	152	187



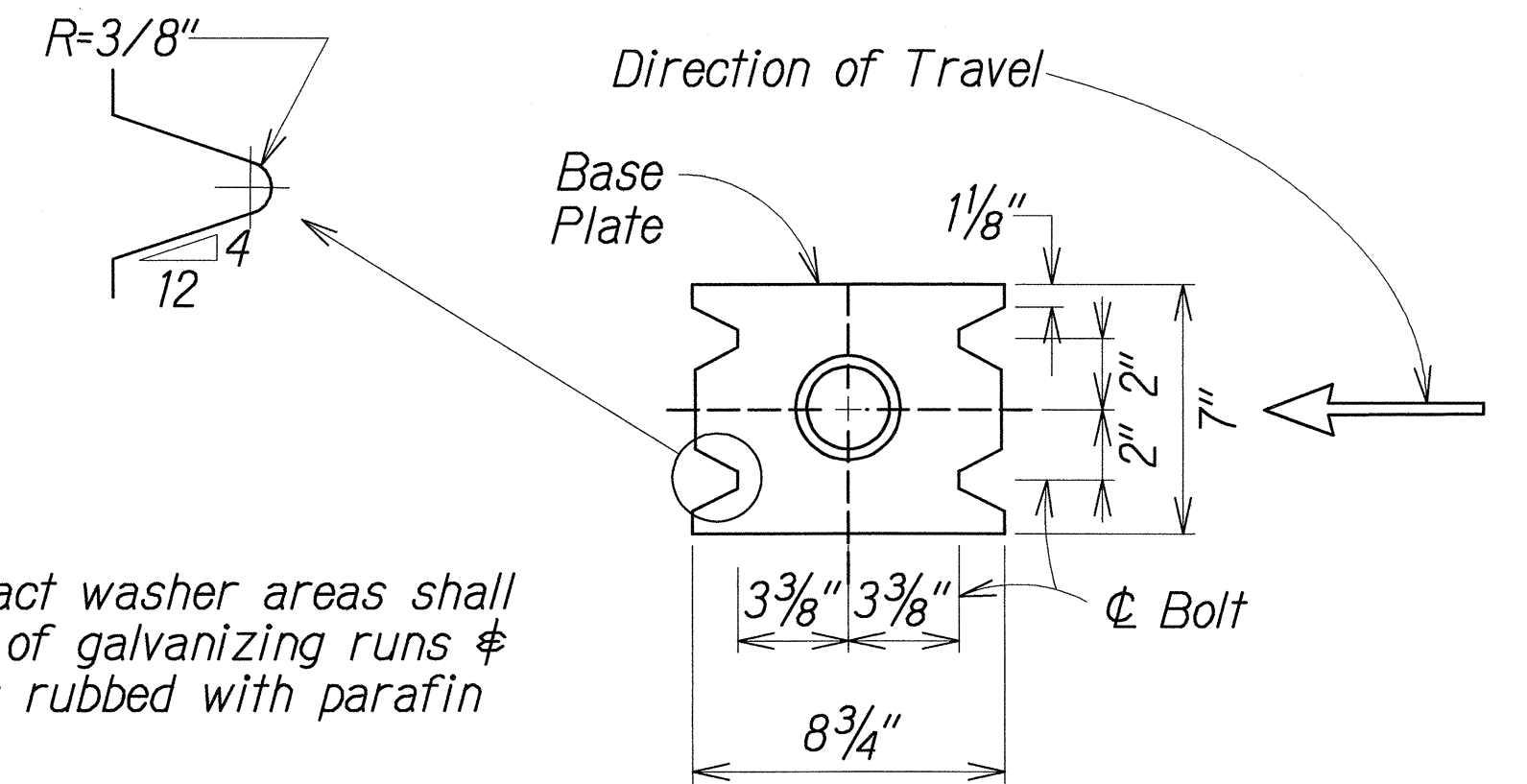
CALL BOX MOUNTING POLE



CALL BOX MOUNTING

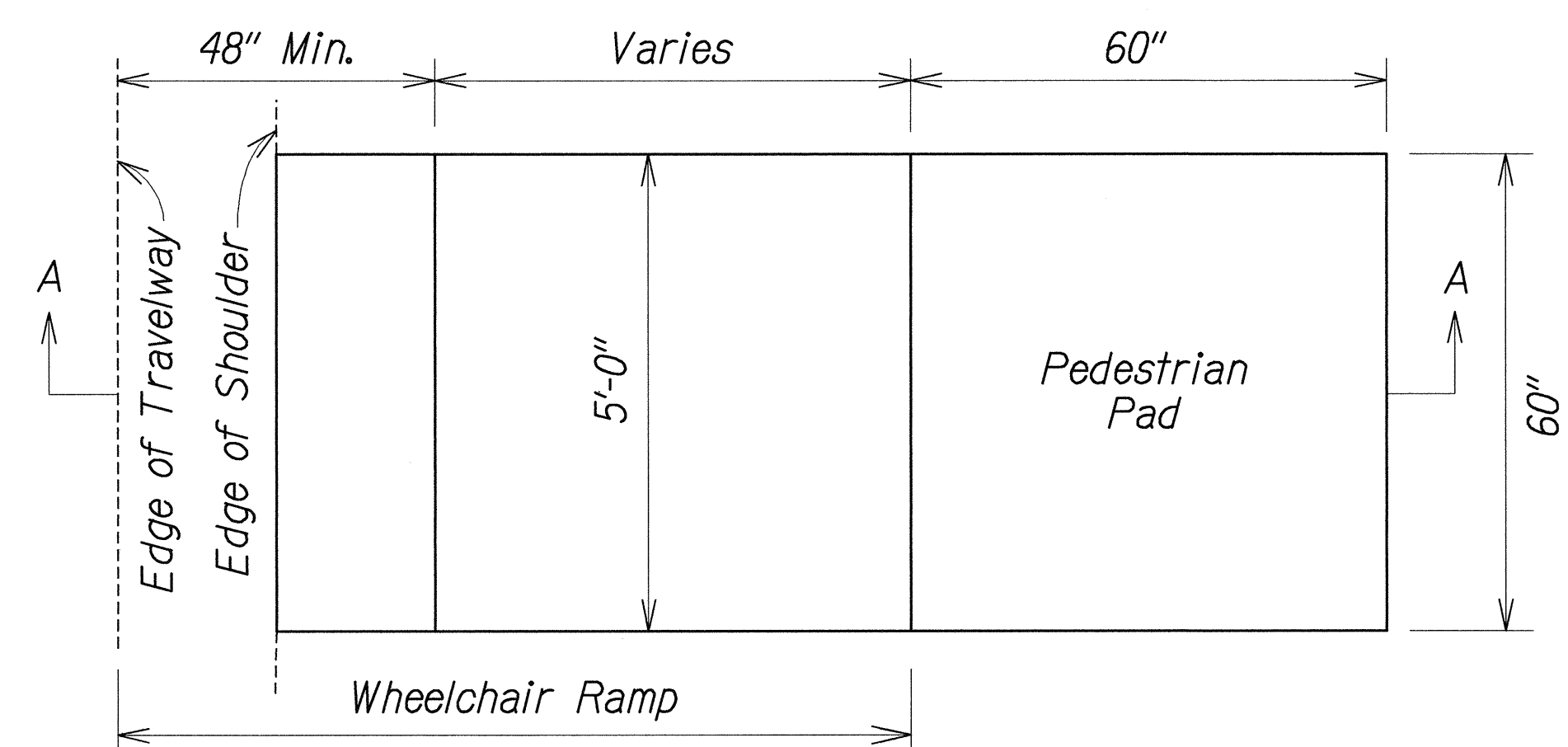


ELEVATION

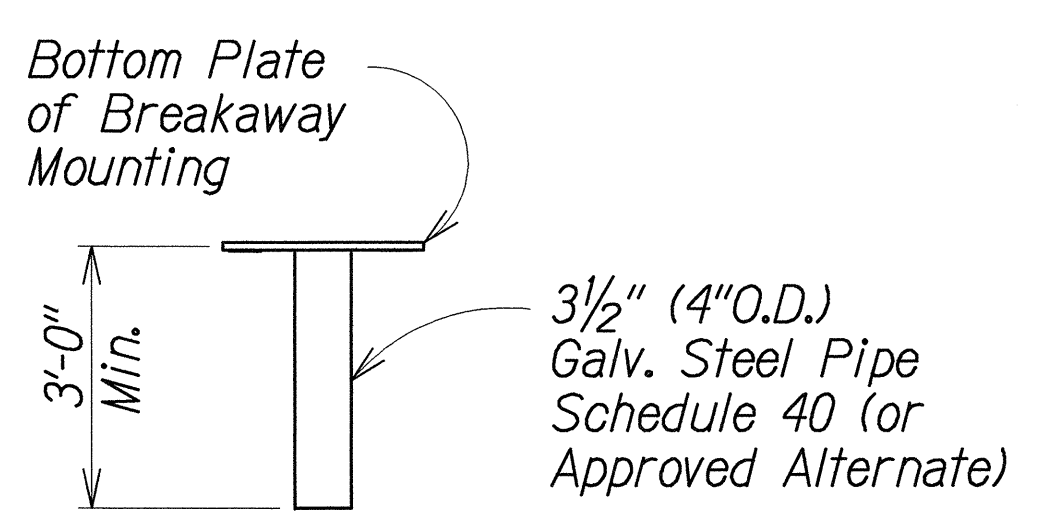


SECTION "A-A"

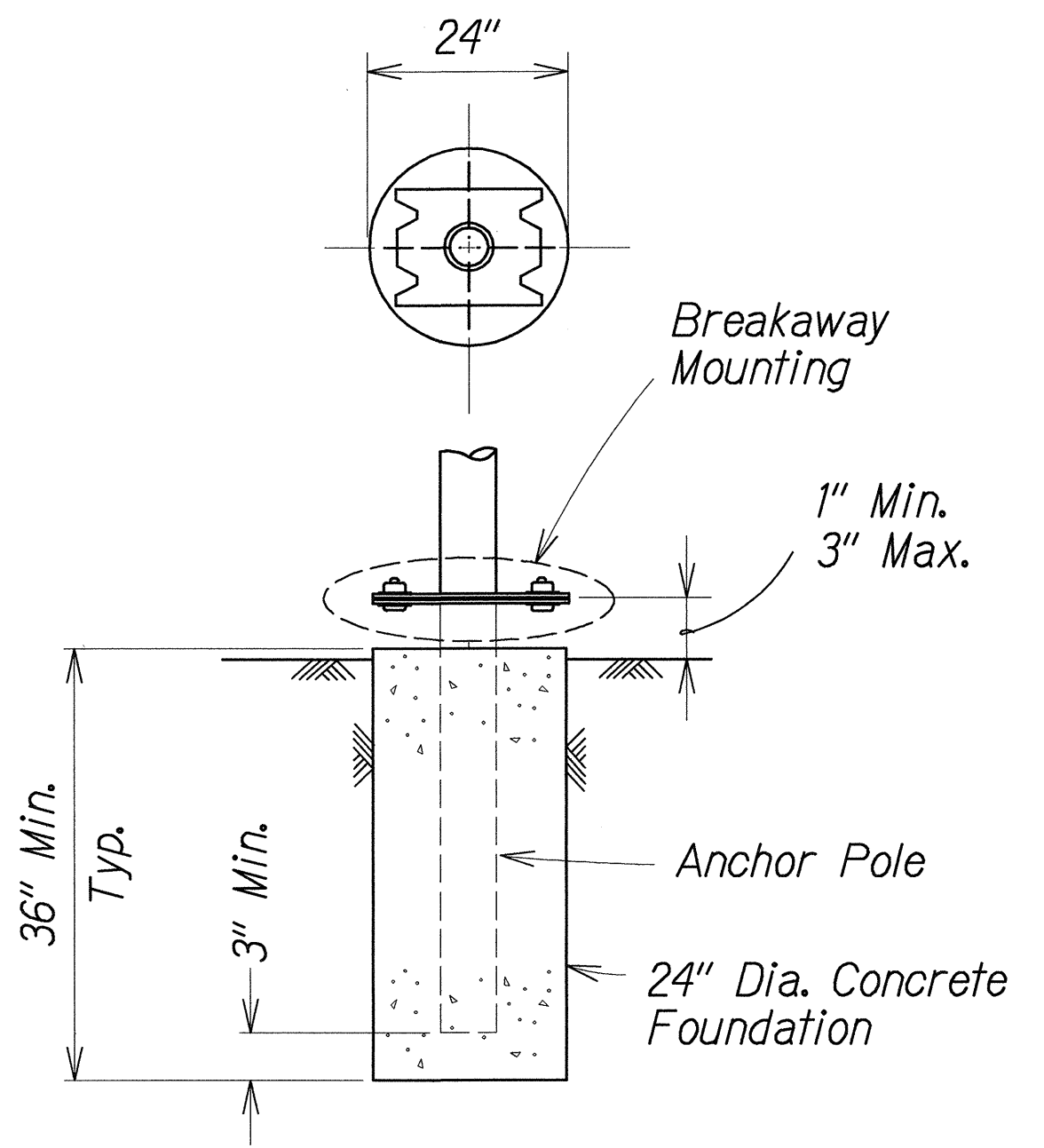
BREAKAWAY MOUNTING



PLAN

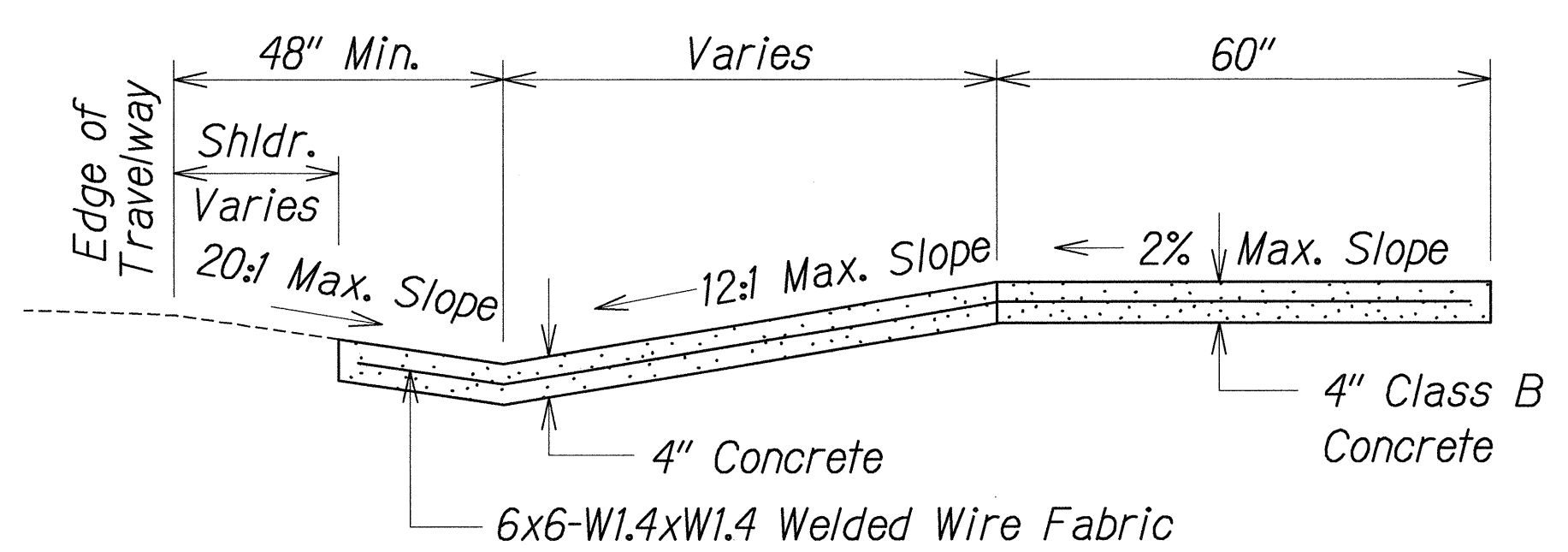


ANCHOR POLE



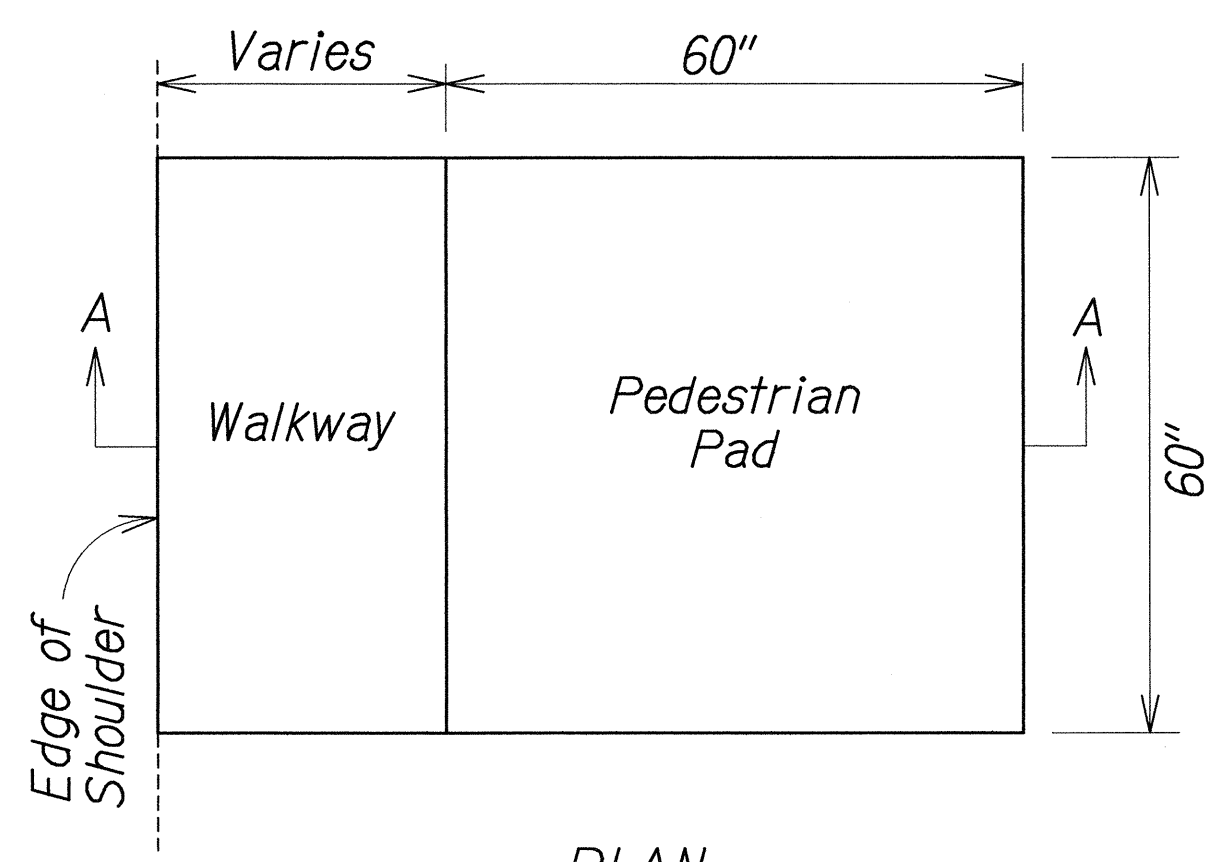
CIDH CONCRETE FOUNDATION WITH BREAKAWAY MOUNTING

- NOTES:
- Foundation shall be Class B placed against undisturbed material.
 - Backfill shall be complete and adjacent surface improvements prepared prior to erection of the post.
 - 1/2-inch expansion joint material shall be placed between the foundation and abutting concrete paving.
 - CIDH = CAST IN DRILLED HOLE



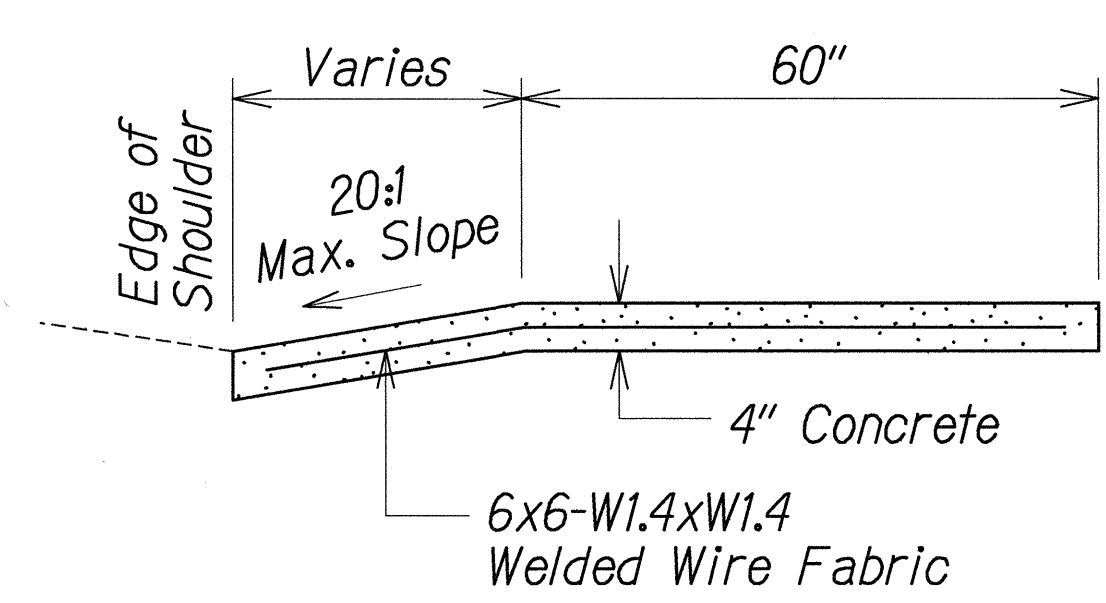
SECTION "A-A"

CONCRETE PEDESTIAN PAD WITH WHEELCHAIR RAMP

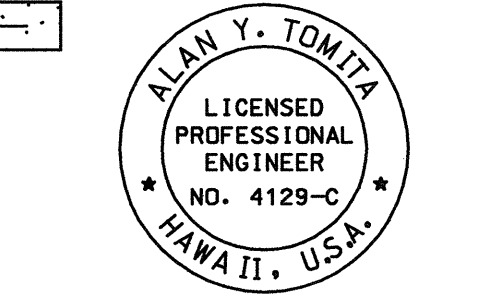


PLAN

CONCRETE PEDESTIAN PAD WITH WALKWAY



SECTION "A-A"



THIS WORK WAS PREPARED BY ME OR UNDER MY SUPERVISION.

Alan Y. Tomita

STATE OF HAWAII
DEPARTMENT OF TRANSPORTATION
HIGHWAYS DIVISION

MISCELLANEOUS DETAILS

LIKELIKE HIGHWAY RESURFACING
Emmeline Place to the Wilson Tunnel
F. A. Project No. CM-STP-063-1(21)

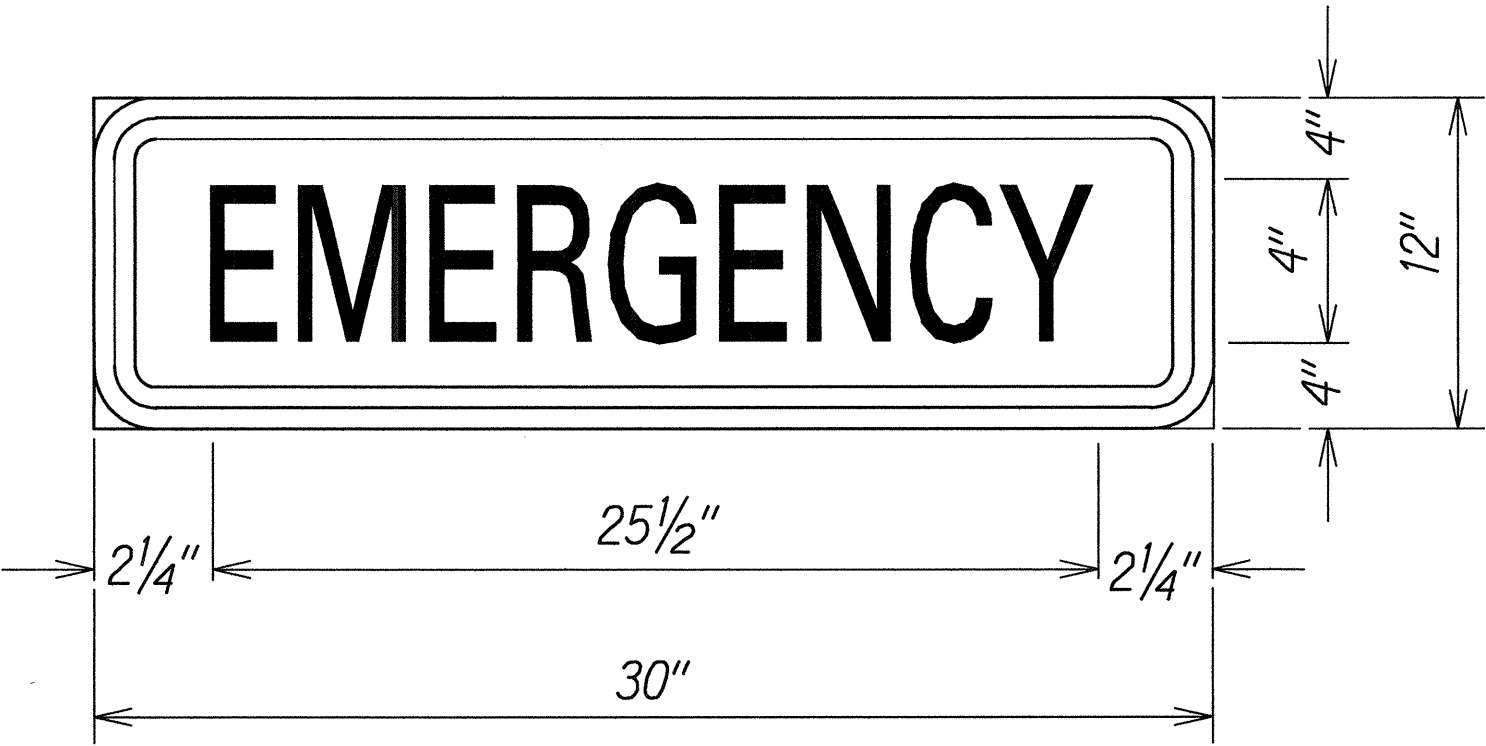
Scale: Not to Scale Date: December, 2001

SHEET No. 3 OF 4 SHEETS

SURVEY PLOTTED BY	DATE
DRAWN BY	
DESIGNED BY	
CHECKED BY	
NOTED BY	
DATE	

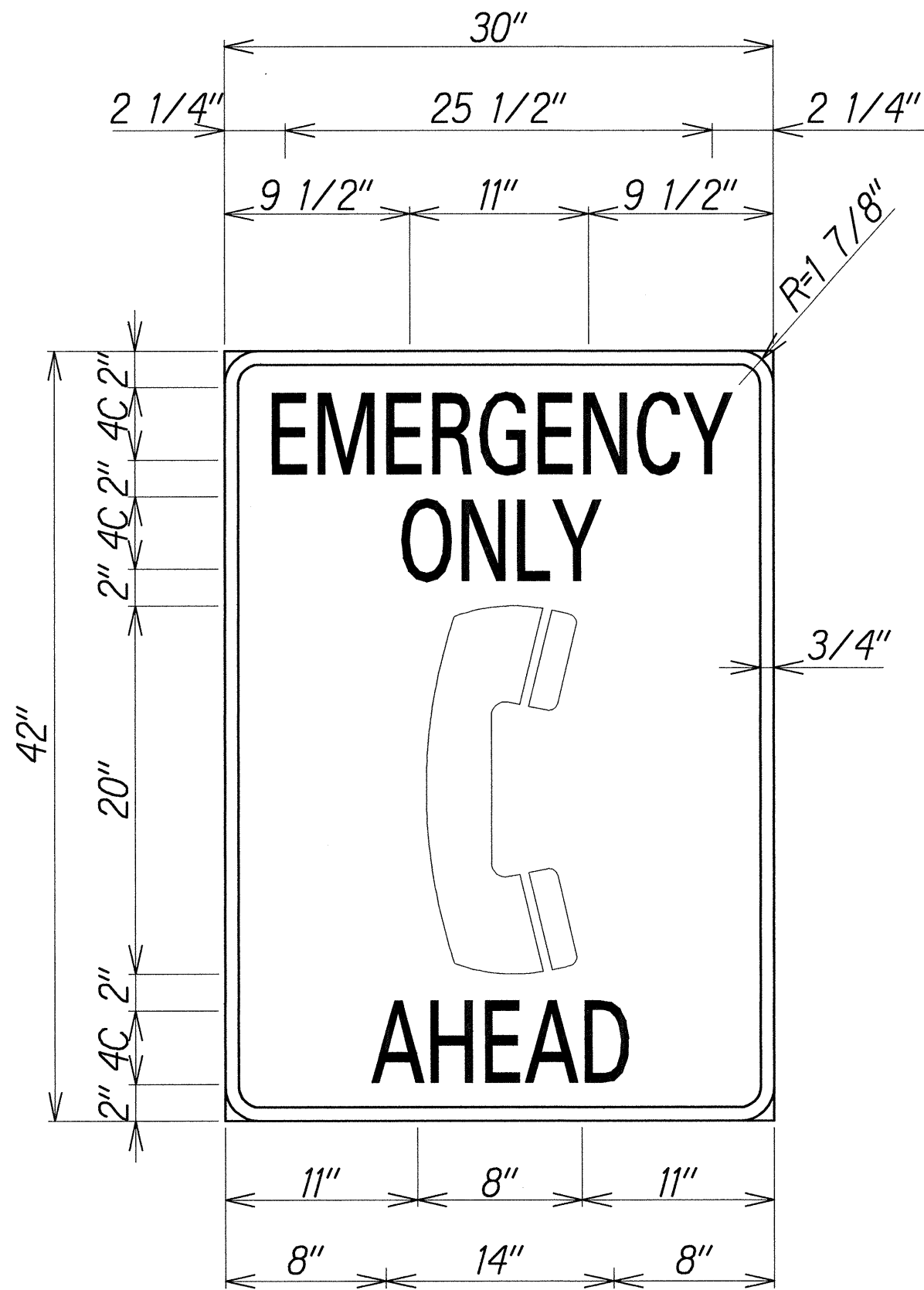
12/17/2001

FED. ROAD DIST. NO.	STATE	PROJ. NO.	FISCAL YEAR	SHEET NO.	TOTAL SHEETS
HAWAII	HAW.	CM-STP-063-1(21)	2002	153	187

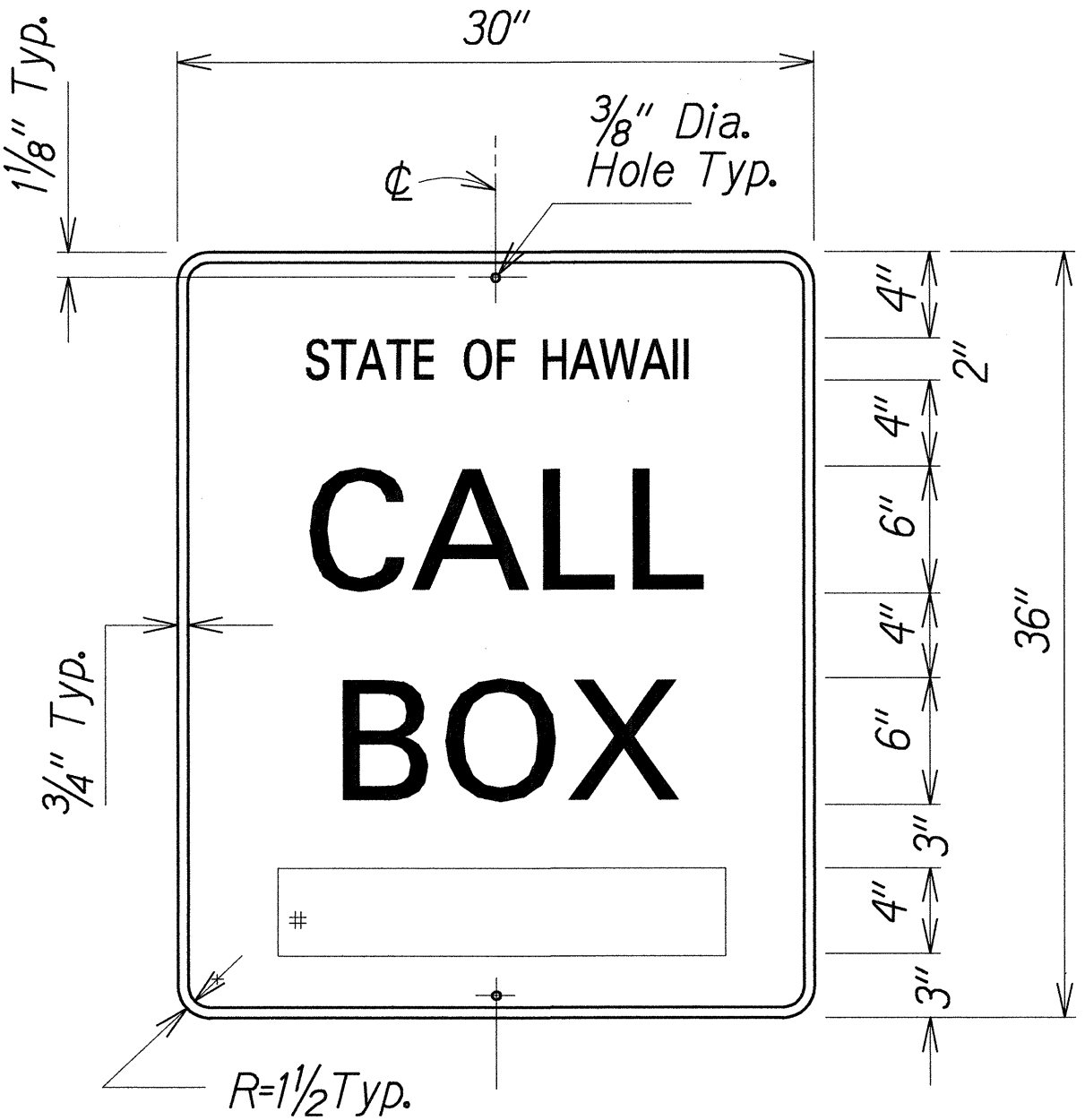


EMERGENCY SIGN

- NOTES:**
1. Lettering shall be centered and shall be 4" SERIES C letters.
 2. All signs shall have white reflectorized border and legend on a blue reflectorized background.



D9-1b (Mod.)
36" x 42"



CALL BOX IDENTIFICATION SIGN

- NOTES:**
1. All lines of lettering shall be centered and shall be the following lettering size and series:
Line No. 1 - 2" SERIES C
Line No. 2 - 6" SERIES E
Line No. 3 - 6" SERIES E
 2. Call Box Identification Numbers shall be 4" SERIES D letters centered in the bottom position of the sign.
 3. All signs shall have white reflectorized border and legend on a blue reflectorized background.
 4. Modify hole locations to accommodate the 2" offset from edge of shoulder.

ORIGINAL PLAN	SURVEY PLOTTED BY	DATE
NOTE BOOK	DRAWN BY	
	DESIGNED BY	
	CHECKED BY	

15TWT5D.DGN

ALAN Y. TOMITA
LICENSED PROFESSIONAL ENGINEER
NO. 4129-C
HAWAII, U.S.A.

THIS WORK WAS PREPARED BY ME
OR UNDER MY SUPERVISION.

Alan Y. Tomita

STATE OF HAWAII
DEPARTMENT OF TRANSPORTATION
HIGHWAYS DIVISION

SIGN DETAILS

LIKELIKE HIGHWAY RESURFACING
Emmeline Place to the Wilson Tunnel
F. A. Project No. CM-STP-063-1(21)

Scale: Not to Scale Date: December, 2001

SHEET No. 4 OF 4 SHEETS