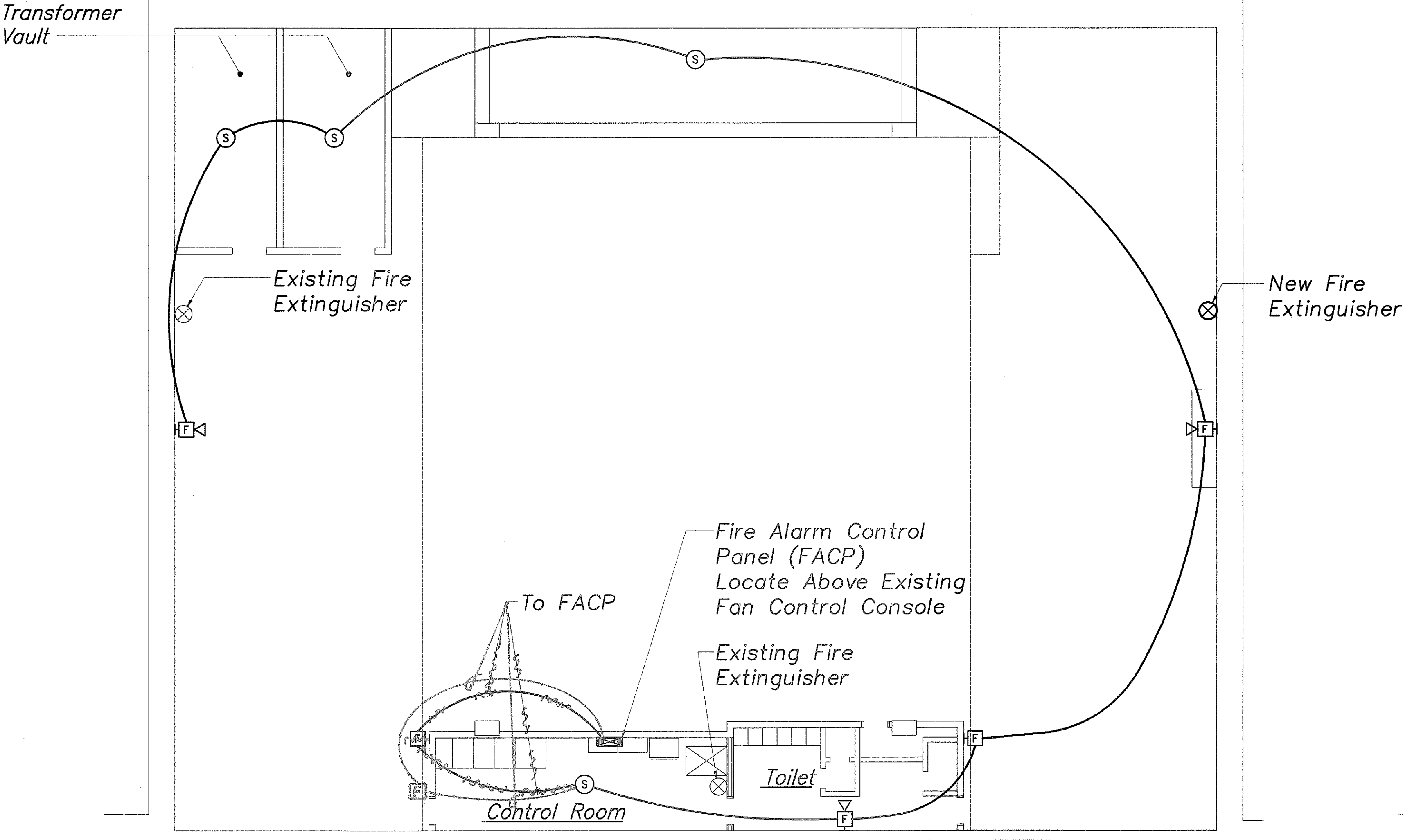
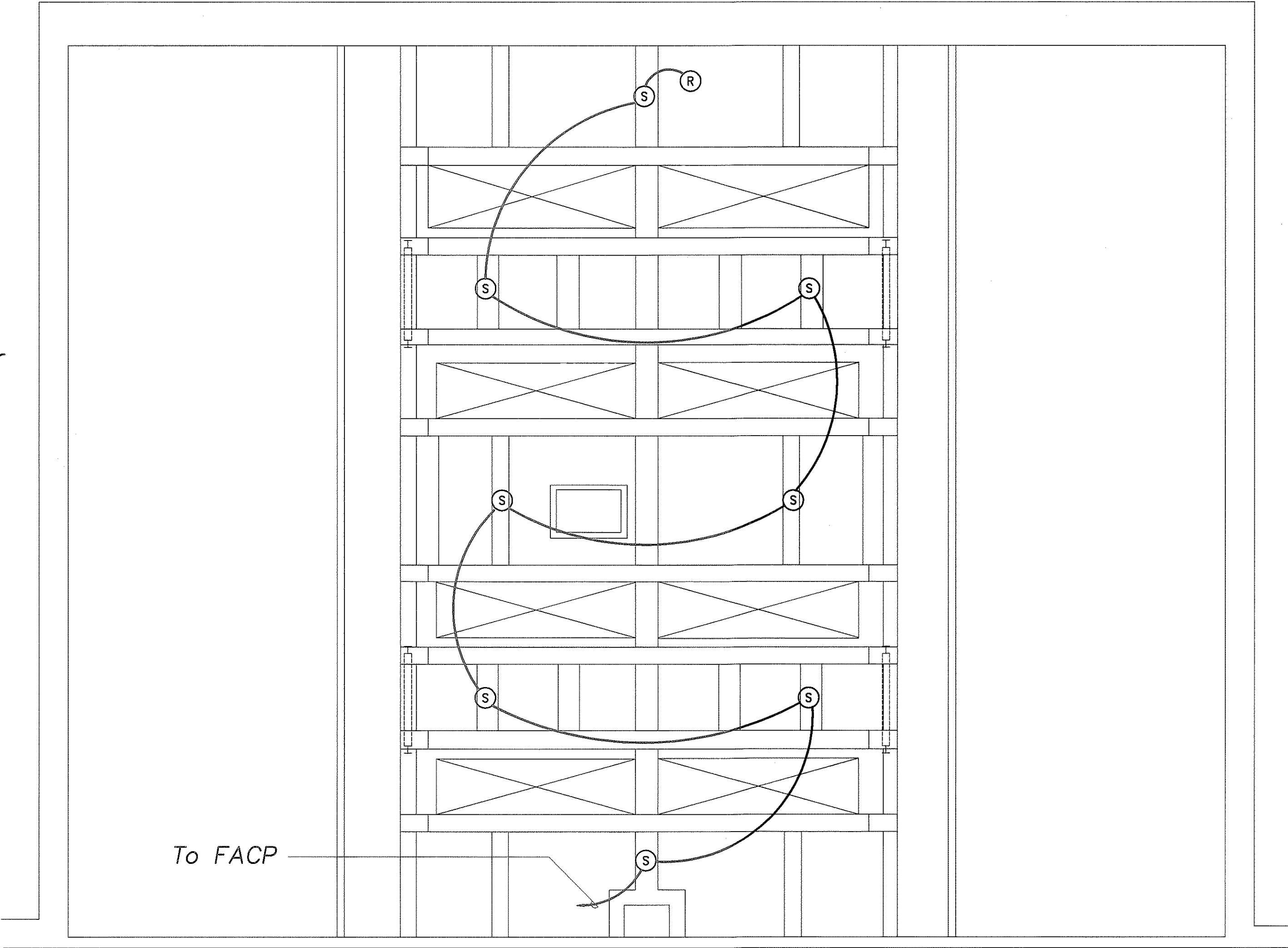


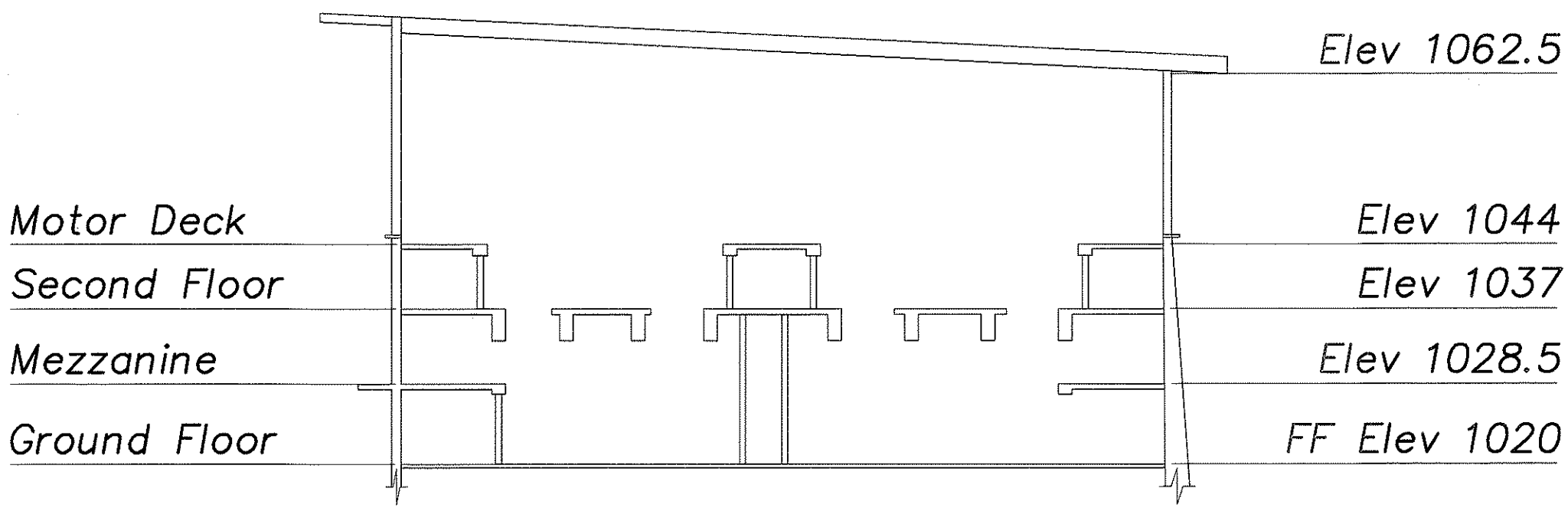
FED. ROAD DIST. NO.	STATE	PROJ. NO.	FISCAL YEAR	SHEET NO.	TOTAL SHEETS
HAWAII	HAW.	HWY-0-21-98M	2001	15	77



GROUND FLOOR PLAN
Scale: 1/8" = 1'-0"



MEZZANINE REFLECTED CEILING PLAN
Scale: 1/8" = 1'-0"



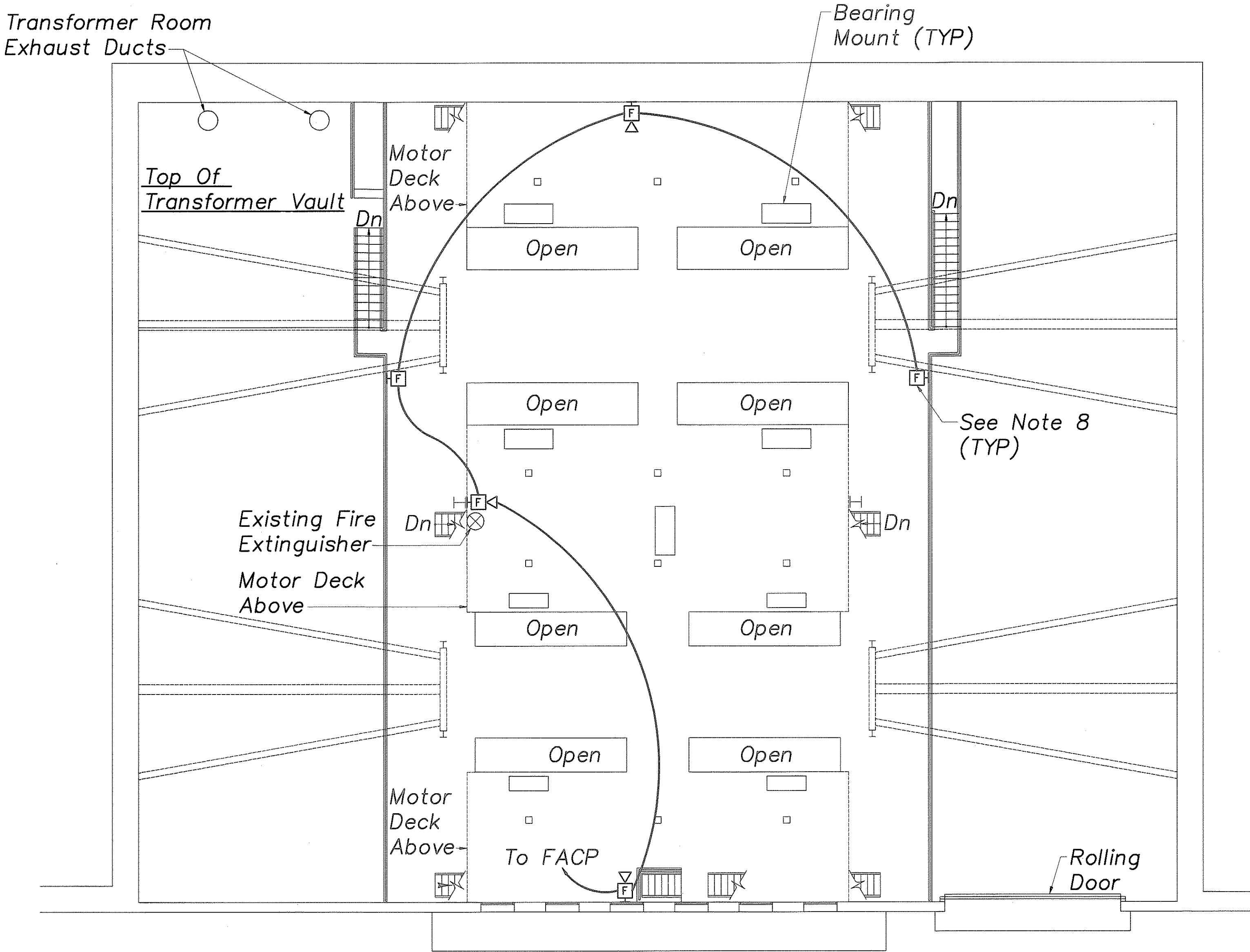
THIS WORK WAS PREPARED BY
ME OR UNDER MY SUPERVISION

STATE OF HAWAII
DEPARTMENT OF TRANSPORTATION
HIGHWAYS DIVISION
GRD FLR & MEZZ CLG
FIRE ALARM PLANS
WILSON TUNNEL IMPROVEMENTS
SCADA UPGRADE
PROJECT NO. HWY-0-21-98M
Scale: As Noted Date: JULY 2000
SHEET NO. FP-1 OF FP-4 SHEETS

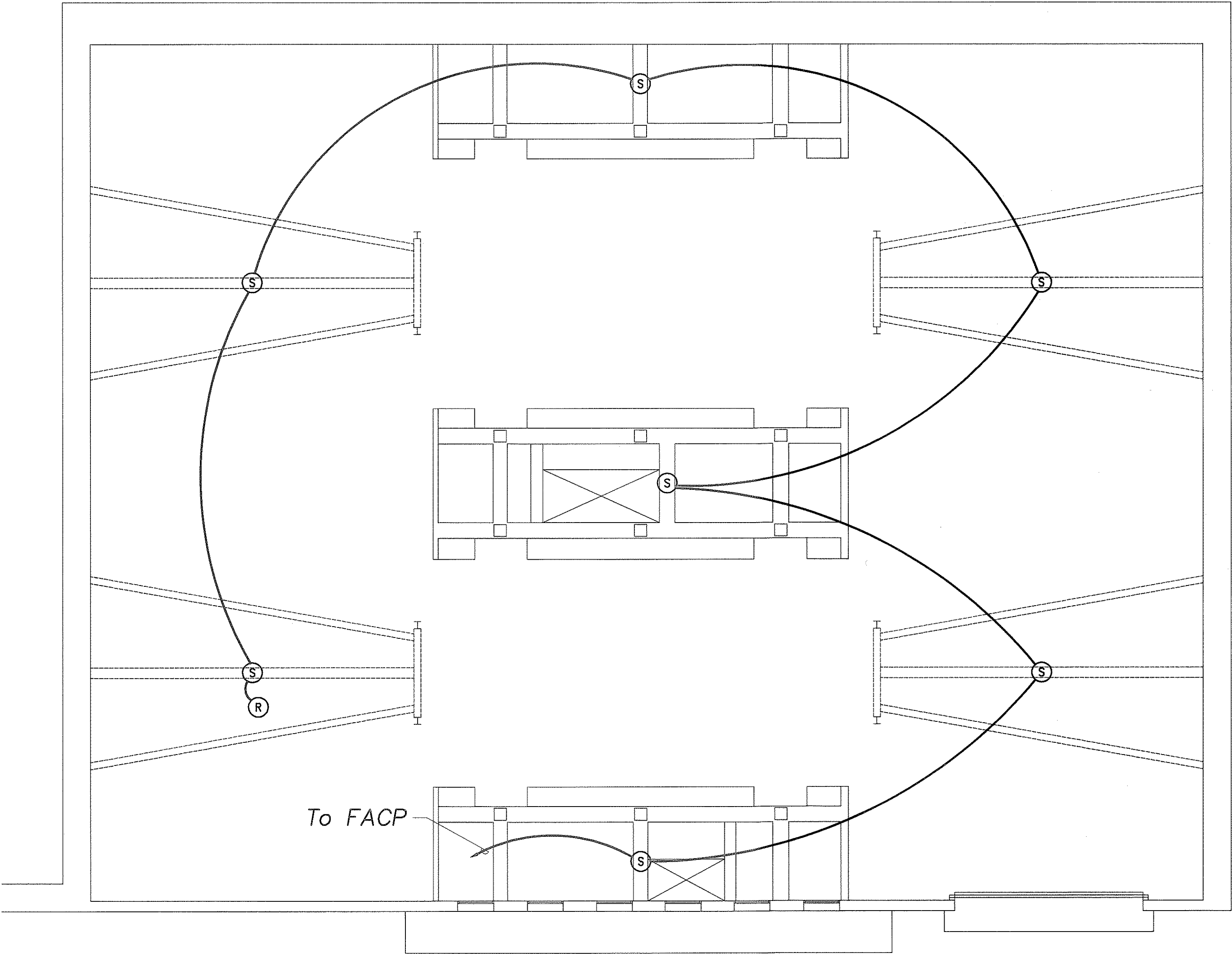
"AS-BUILT"

ORIGINAL PLAN	SURVEY PLOTTED BY	DATE
NOTED	DRAWN BY	
DESIGNED BY		
QUANTITIES BY		
CHECKED BY		

FED. ROAD DIST. NO.	STATE	PROJ. NO.	FISCAL YEAR	SHEET NO.	TOTAL SHEETS
HAWAII	HAW.	HWY-0-21-98M	2001	16	77

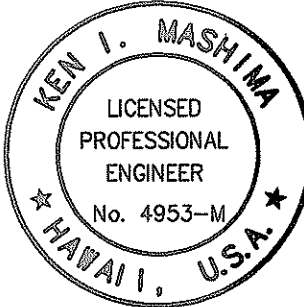


SECOND FLOOR PLAN
Scale: 1/8" = 1'-0"



SECOND FLOOR REFLECTED CEILING PLAN
Scale: 1/8" = 1'-0"

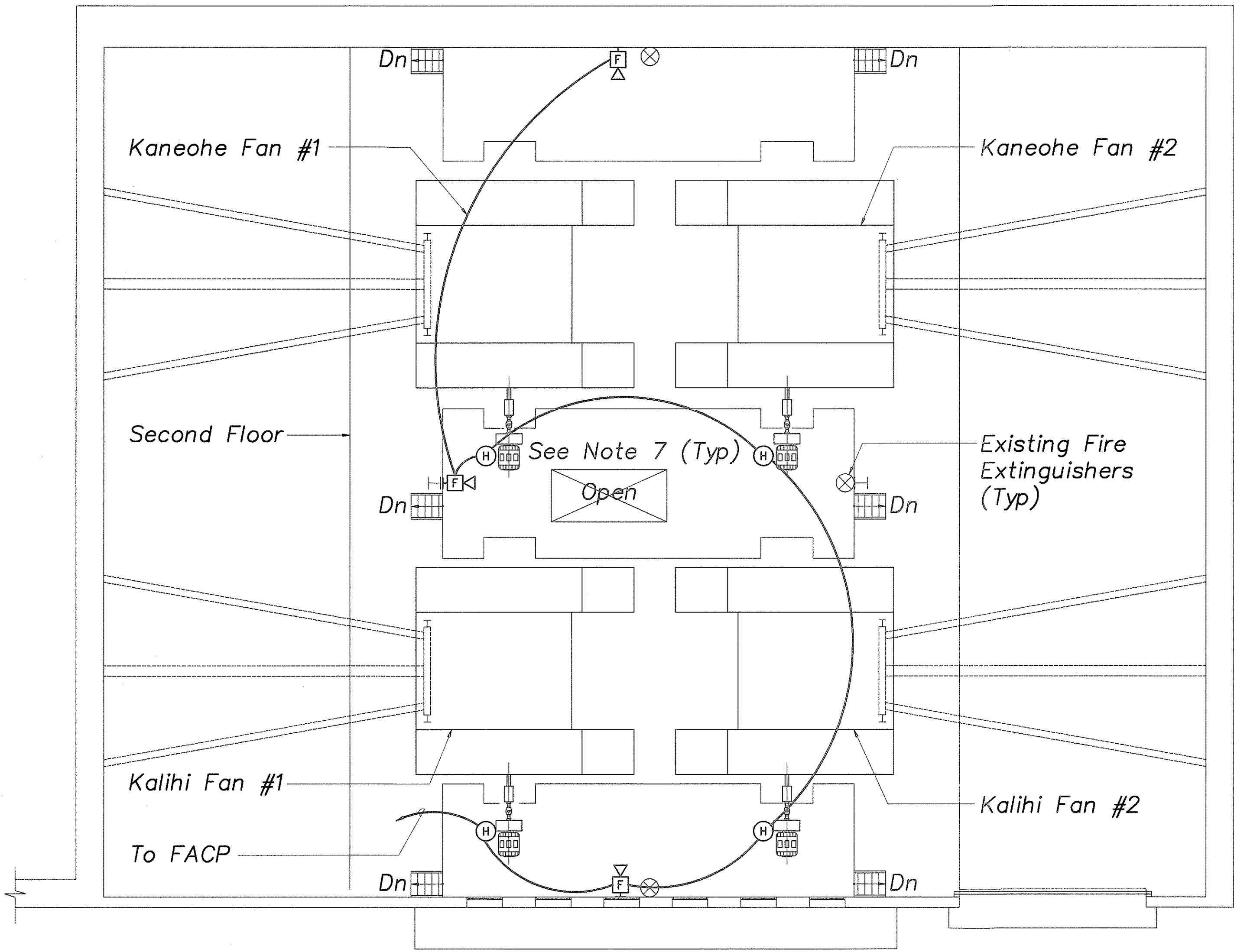
SURVEY PLOTTED BY	DATE
DRAWN BY	
TRACED BY	
DESIGNED BY	
CHECKED BY	
ORIGINAL PLAN	
NOTEBOOK	
No.	



THIS WORK WAS PREPARED BY
ME OR UNDER MY SUPERVISION

STATE OF HAWAII
DEPARTMENT OF TRANSPORTATION
HIGHWAYS DIVISION
2ND FLOOR AND CEILING
FIRE ALARM PLANS
WILSON TUNNEL IMPROVEMENTS
SCADA UPGRADE
PROJECT NO. HWY-0-21-98M
Scale: As Noted Date: JULY 2000
SHEET No. FP-2 OF FP-4 SHEETS

FED. ROAD DIST. NO.	STATE	PROJ. NO.	FISCAL YEAR	SHEET NO.	TOTAL SHEETS
HAWAII	HAW.	HWY-0-21-98M	2001	17	77



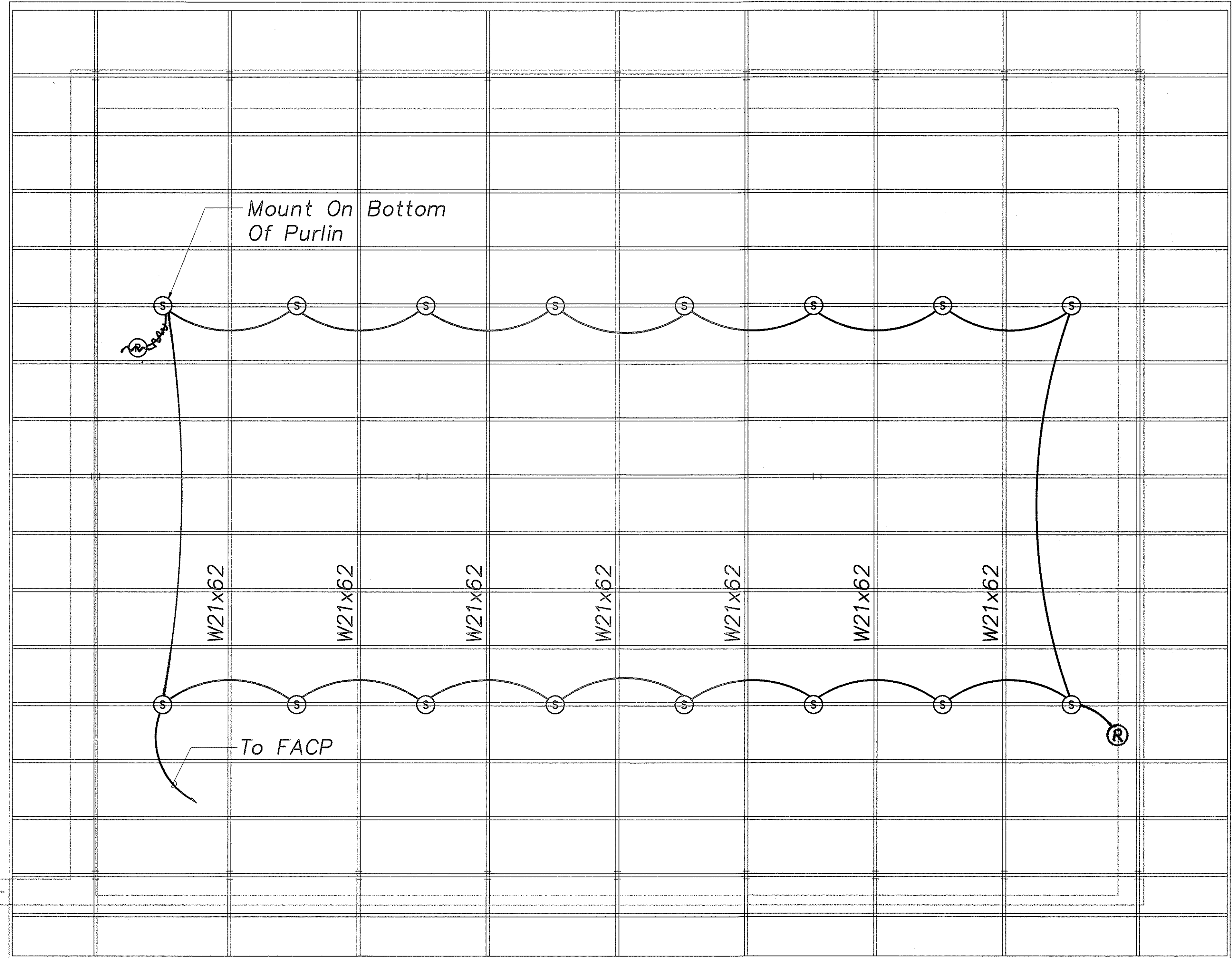
MOTOR DECK PLAN
Scale: 1/8" = 1'-0"

NOTES:

1. All Items Shown Are New Unless Otherwise Noted.
2. All Conduits Shall Be 3/4" Minimum Unless Otherwise Noted.
3. Fire Alarm System Wiring (Initiating & Signaling) Shall Be #14 AWG Minimum. Verify Exact Wire Count With The Equipment Supplier.
4. The Fire Alarm System Shall Conform To The Requirements Of NFPA 72, The Uniform Fire Code Of The City And County Of Honolulu And The Applicable Sections Of NFPA 101.
5. Provide End-Of-Line Resistor Per Equipment Supplier Recommendation.
6. Mount Smoke Detector To Bottom Of Concrete Beams And Steel Purlins As Applicable.
7. Provide Minimum L2x2x1/4 Steel Support Stanchions To Locate Heat Detectors Above And To The Side Of Motors.
8. Provide Minimum L2x2x1/4 Steel Support Stanchions To Locate Manual Pull Stations At +3'-6" AFF.

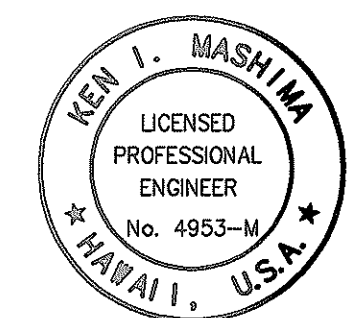
FIRE ALARM LEGENDS

- (F) Manual Fire Alarm Station, +3'-6" AFF
- (F) Fire Alarm Audio/Visual Signaling Device, +6'-8" AFF
- (S) Smoke Detector, Ceiling Mounted
- (H) Rate Of Rise Heat Detector, ~~Ceiling Mounted~~ (see note 7)
- (MM) Monitor Module
- (J) Junction Box
- (R) End Of Line Resistor
- (FACP) Fire Alarm Control Panel (FACP), +6'-0" AFF To Top Of Panel
- Exposed Conduit And Wiring
- Homerun To Fire Alarm Control Panel



ROOF REFLECTED CEILING PLAN
Scale: 1/8" = 1'-0"

SURVEY PLOTTED BY	DATE
DRAWN BY	
DESIGNED BY	
QUANTITIES BY	
CHECKED BY	
ORIGINAL PLAN	
NO.	



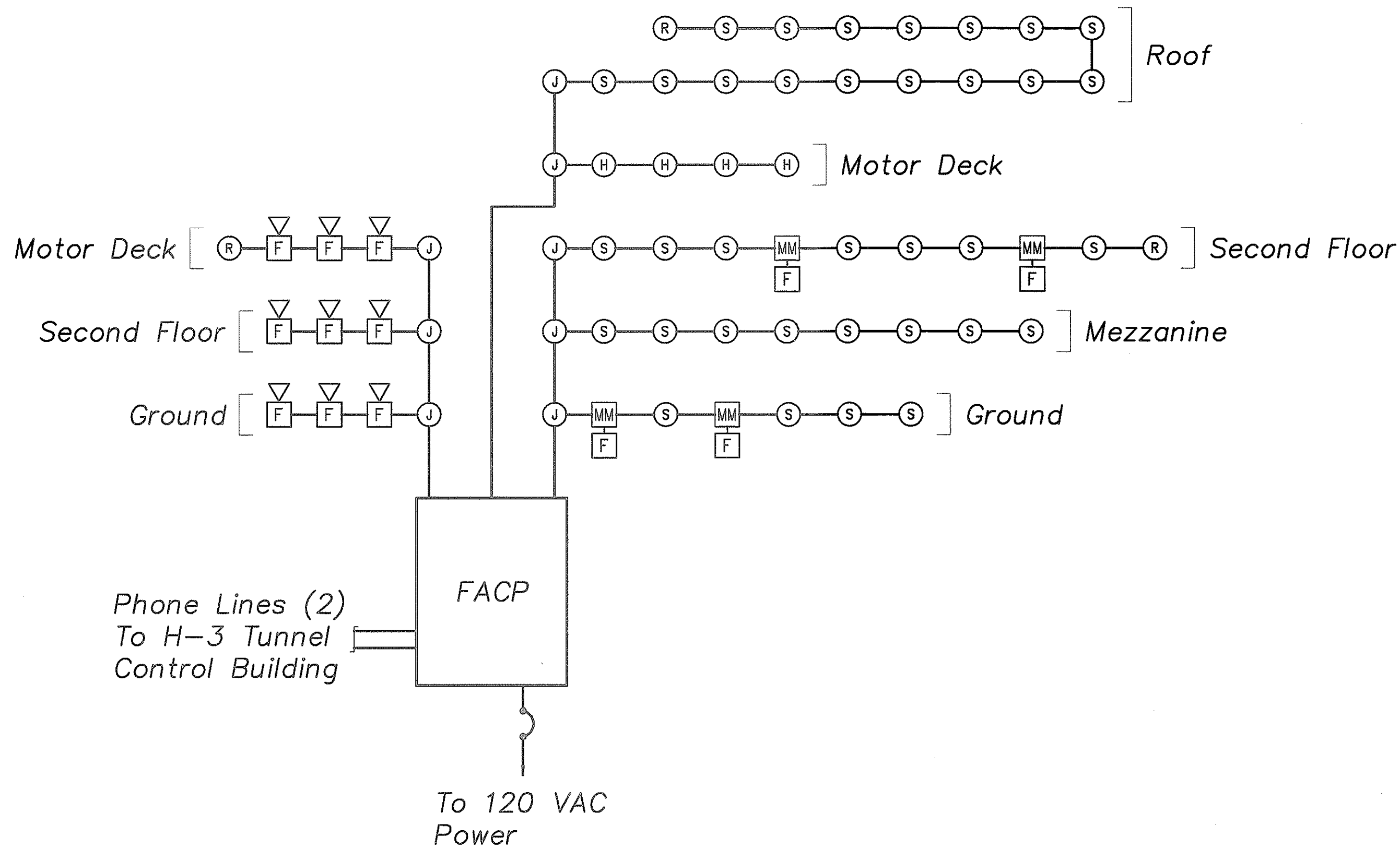
THIS WORK WAS PREPARED BY ME OR UNDER MY SUPERVISION

STATE OF HAWAII
DEPARTMENT OF TRANSPORTATION
HIGHWAYS DIVISION

**MOTOR DECK & ROOF
FIRE ALARM PLANS & NOTES**

WILSON TUNNEL IMPROVEMENTS
SCADA UPGRADE
PROJECT NO. HWY-0-21-98M
Scale: As Noted Date: JULY 2000
SHEET No. FP-3 OF FP-4 SHEETS

"AS-BUILT"

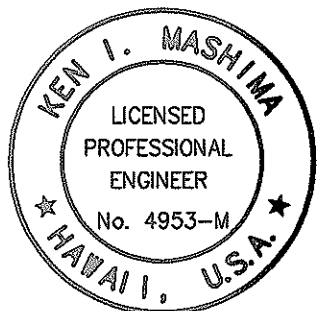


FIRE ALARM RISER DIAGRAM
Scale: None

System Input	System Output	Activate Audio Visual Devices	Notify H-3 Control Building Of Fire Alarm	Notify H-3 Control Building Of Trouble Condition
Smoke Detector				
Heat Detector				
Manual Pull Station				
Any Trouble Condition				

FIRE ALARM MATRIX

SURVEY PLOTTED BY	DATE
DRAWN BY	
TRACED BY	
QUANTITIES BY	
CHECKED BY	
ORIGINAL PLAN	
NOTEBOOK	
No.	



THIS WORK WAS PREPARED BY
ME OR UNDER MY SUPERVISION

STATE OF HAWAII
DEPARTMENT OF TRANSPORTATION
HIGHWAYS DIVISION
**FIRE ALARM RISER
DIAGRAM & MATRIX**
WILSON TUNNEL IMPROVEMENTS
SCADA UPGRADE
PROJECT NO. HWY-0-21-98M
Scale: As Noted Date: JULY 2000
SHEET No. FP-4 OF FP-4 SHEETS