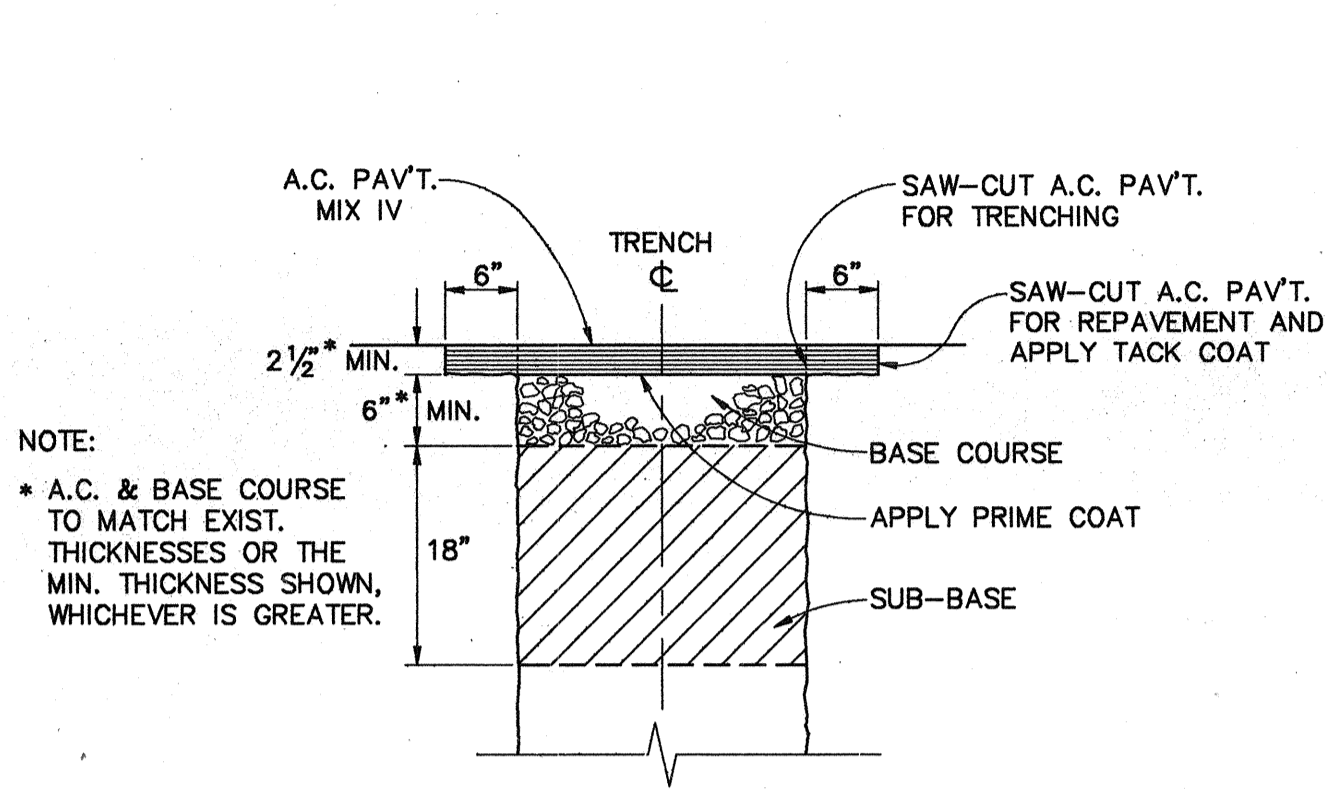
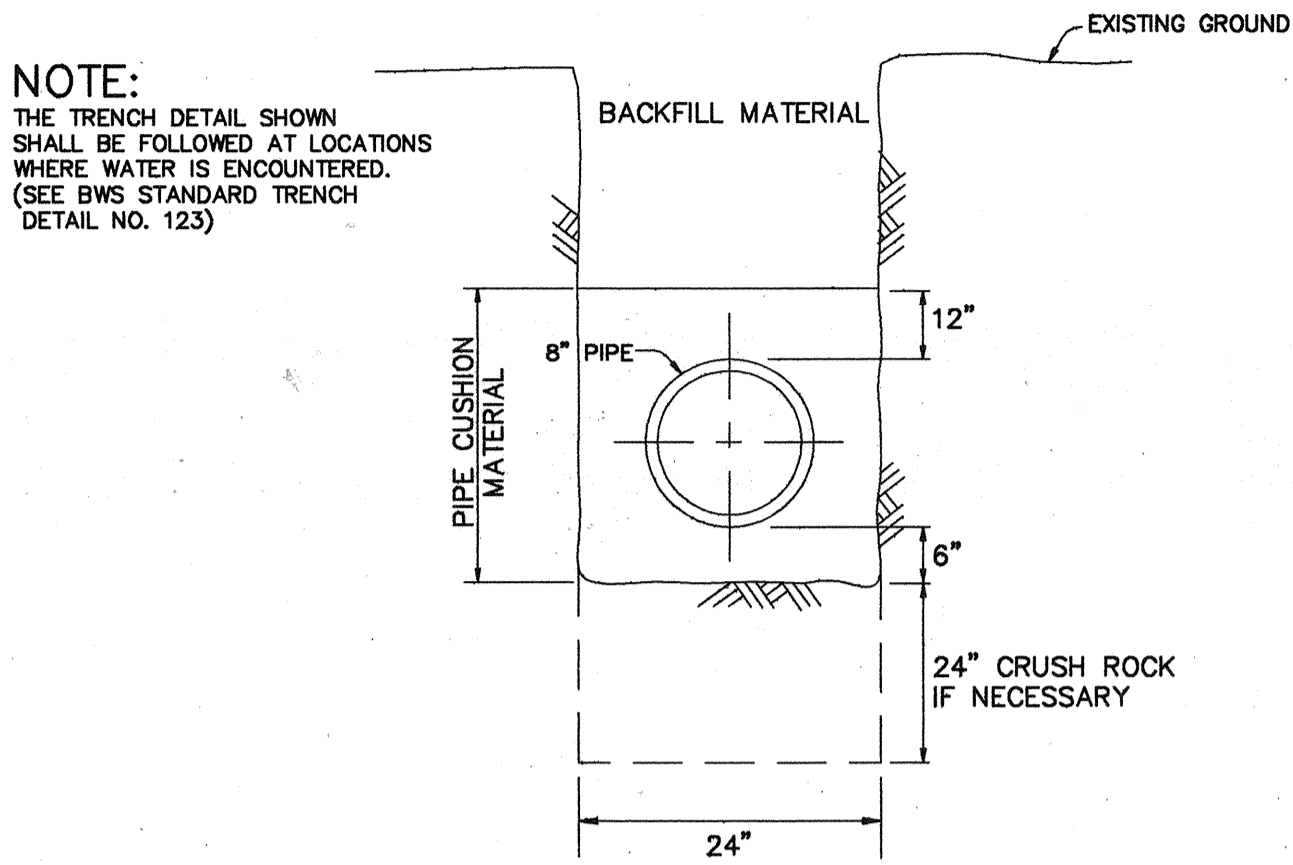


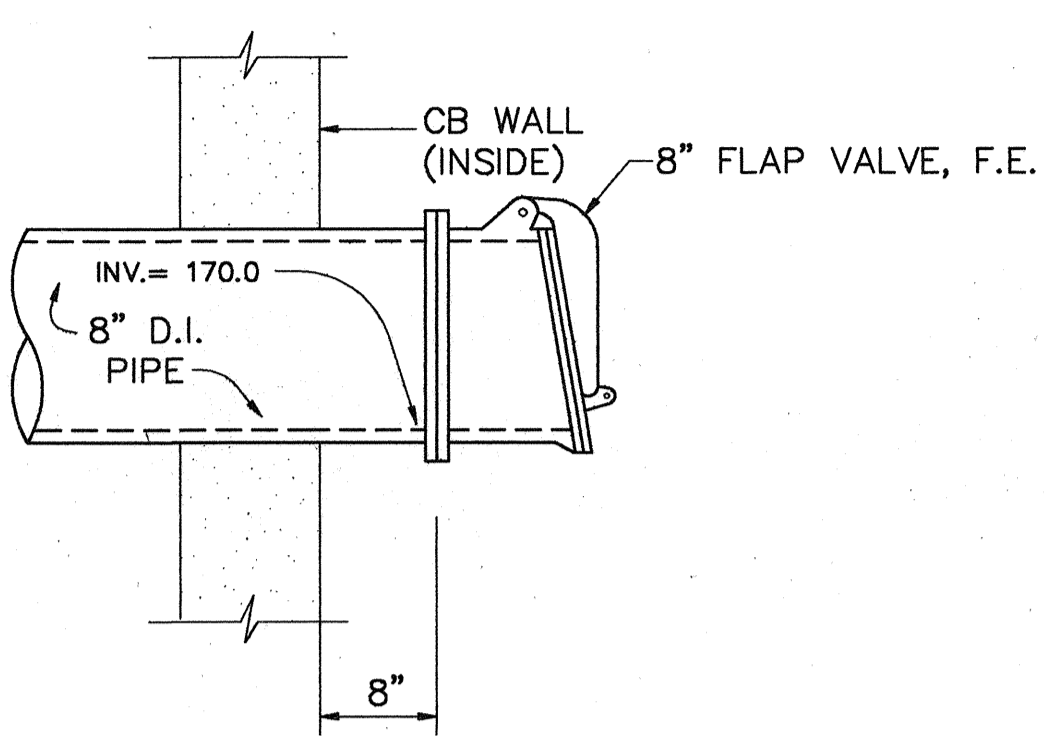
FED. ROAD DIS. NO.	STATE	PROJ. NO.	FISCAL YEAR	SHEET NO.	TOTAL SHEETS
HAWAII	HAW.	HWY-0-05-91	1992	25	49



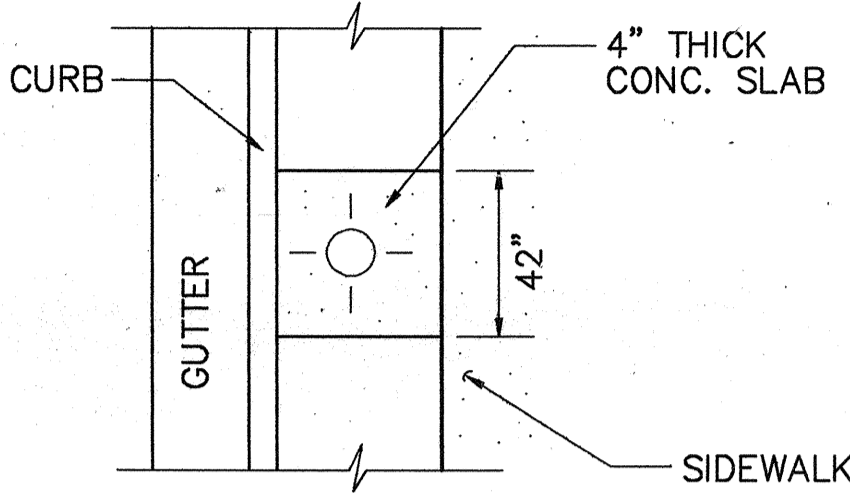
TYPICAL TRENCH REPAV'T. DETAIL  
SCALE: 3/4" = 1'-0"



TYPICAL DETAIL OF TRENCH BACKFILL  
8" WATER LINE AND BLOWOFF LINE  
NOT TO SCALE



FLAP VALVE DETAIL  
FOR 8" BLOWOFF LINE AT C.B. NO. C2  
NOT TO SCALE



TYPICAL CONC. SLAB  
FOR FIRE HYDRANT  
NOT TO SCALE

DATE	10/01/91
DESIGNED BY	
CHECKED BY	
IN CHARGE	
NOTED BY	
QUANTITIES BY	
NO.	



APPROVED:  
*[Signature]*  
CHIEF PLANNING AND ENGINEERING, BNS

THIS WORK WAS PREPARED BY ME  
OR UNDER MY SUPERVISION  
*[Signature]*  
FOR EN. INC.  
dba PARK ENGINEERING

△	12/16/91	ADDED B.N.S. SIGNATURE	D.E.
REVISION	DATE	BRIEF	BY APPROVED

STATE OF HAWAII			
DEPARTMENT OF TRANSPORTATION			
HIGHWAYS DIVISION			
<u>WATER DETAILS</u>			
<u>CASTLE HILLS ACCESS ROAD</u>			
<u>PROJ. NO. HWY-0-05-91</u>			
SCALE: AS SHOWN		DATE: MARCH, 1991	
SHEET No. 1 OF 1 SHEETS			