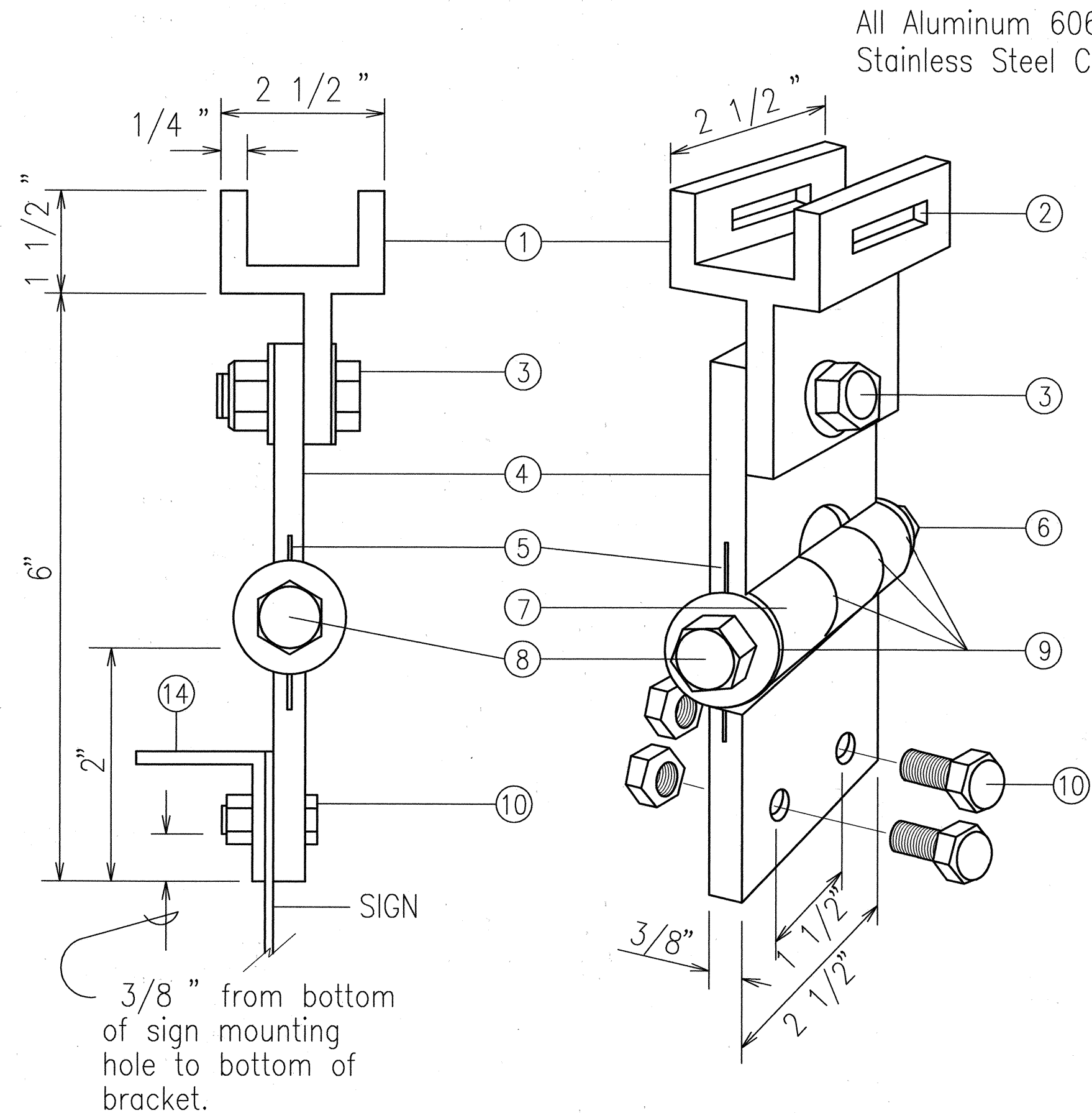


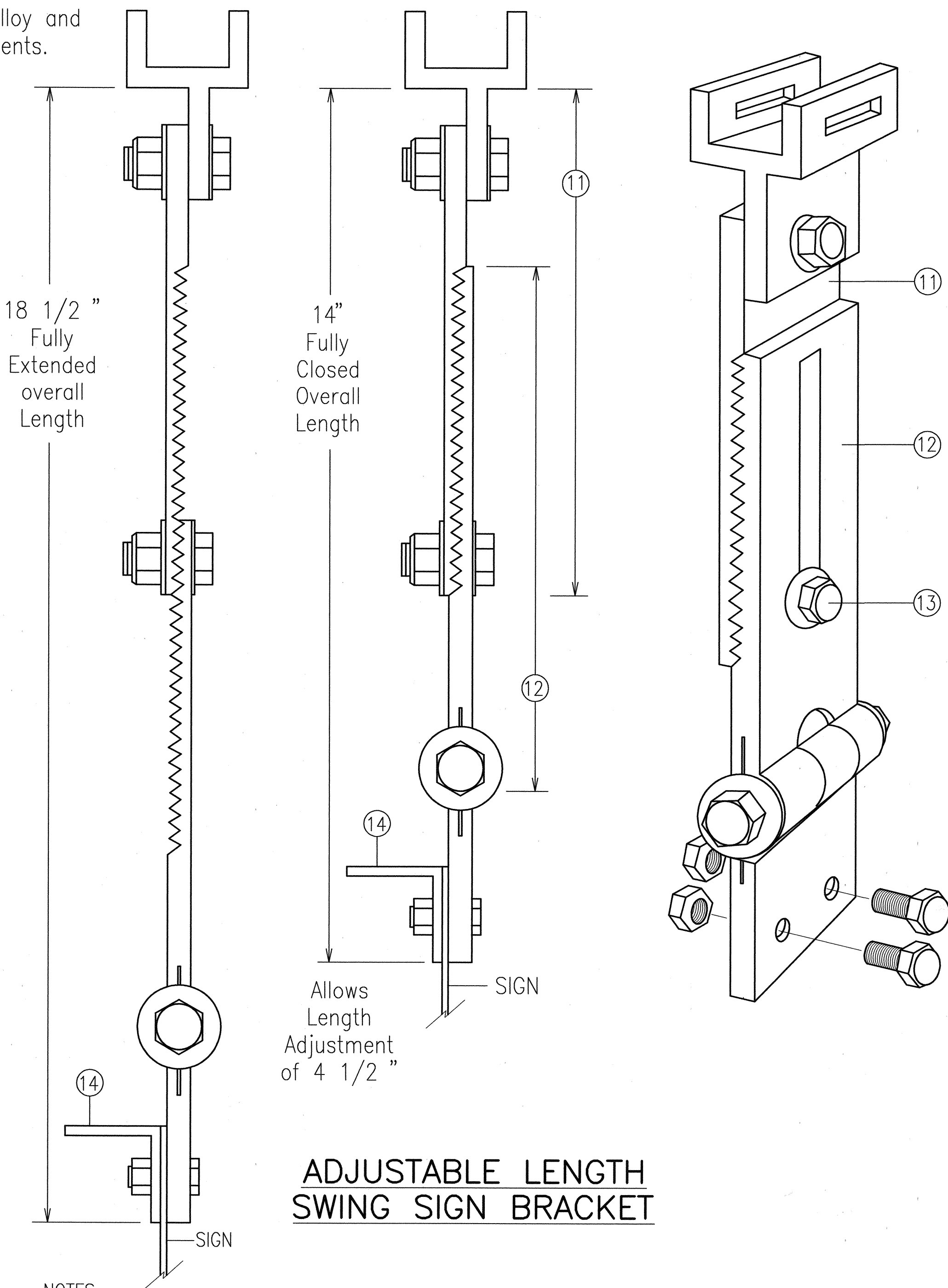
FED. ROAD DIST. NO.	STATE	PROJ. NO.	FISCAL YEAR	SHEET NO.	TOTAL SHEETS
HAWAII	HAW.	63A-02-96	1997	19	19



FIXED LENGTH NON-ADJUSTABLE SWING SIGN BRACKET

- ① Pivotal Upper Bracket
- ② 1 5/8 " x 1/4 " Slot for double strapping to electrolier mast arm. (M2G-34S(HD) .030" x 3/4 " Heavy Duty Stainless Steel Strap with M2G-34B(HD) Buckle recommended.)
- ③ 1/2 " - 13 x 1 1/2 " Stainless Steel Hex Head Bolt with Stainless Steel Hex Lock Nut and 1/16 " Stainless Steel Washer (both sides). Allows upper bracket to pivot and align with electrolier mast arm.
- ④ 6" Overall drop with Fixed Length Sign Bracket
- ⑤ Stainless Steel Dampener Spring (Removable)
- ⑥ Stainless Steel Hex Lock Nut with 1/16 " Stainless Steel Washer
- ⑦ 1" O.D. Axle Housing
- ⑧ 1/2 " - 13 x 4" Stainless Steel Hex Head Bolt with 1/16 " Stainless Steel Washer
- ⑨ Oilite Bushing
- ⑩ Sign Mounting Sets, consisting of two each 5/16 " - 18 x 1" Stainless Steel Hex Head Bolt with Stainless Steel Hex Head Bolt with Lock Nut. Two holes on 1 1/2 " centers provide positive lock sign mounting to bracket.
- ⑪ 8 1/4 " overall length Upper Adjustable Sign Bracket Section.
- ⑫ 9" overall length Lower Adjustable Sign Bracket section, including Axle Housing (8" overall length to top of Axle Housing).
- ⑬ 1/2 " - 13 x 1 1/2 " Stainless Steel Hex Bolt with Stainless Steel Hex Lock Nut and 1/16 " Stainless Steel Washers (both sides). Loosen lock nut, adjust bracket teeth to level sign.
- ⑭ 1 1/4 " x 1 1/4 " x 1/8 " Aluminum Angle

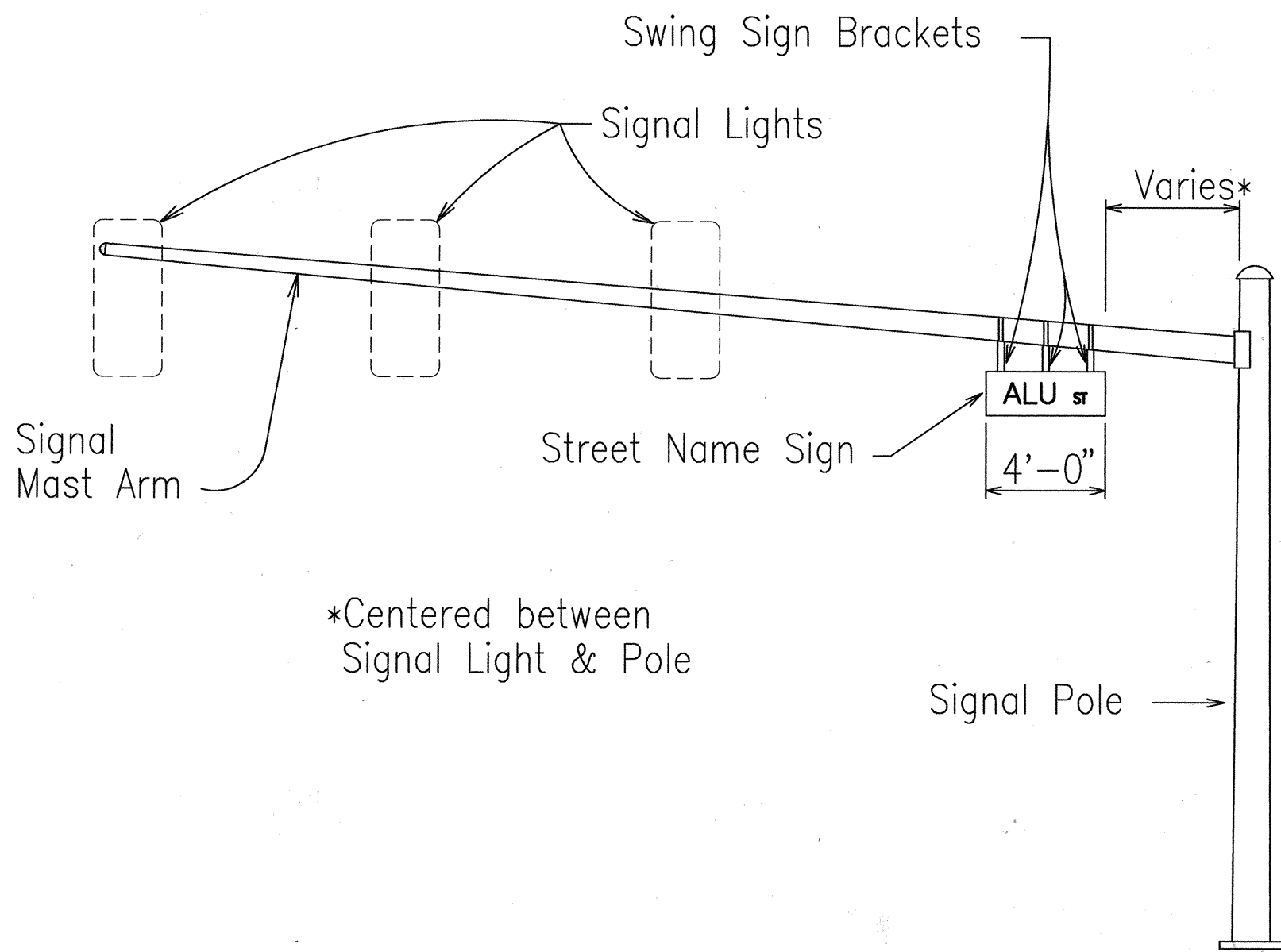
Note: Dimensions may vary slightly.



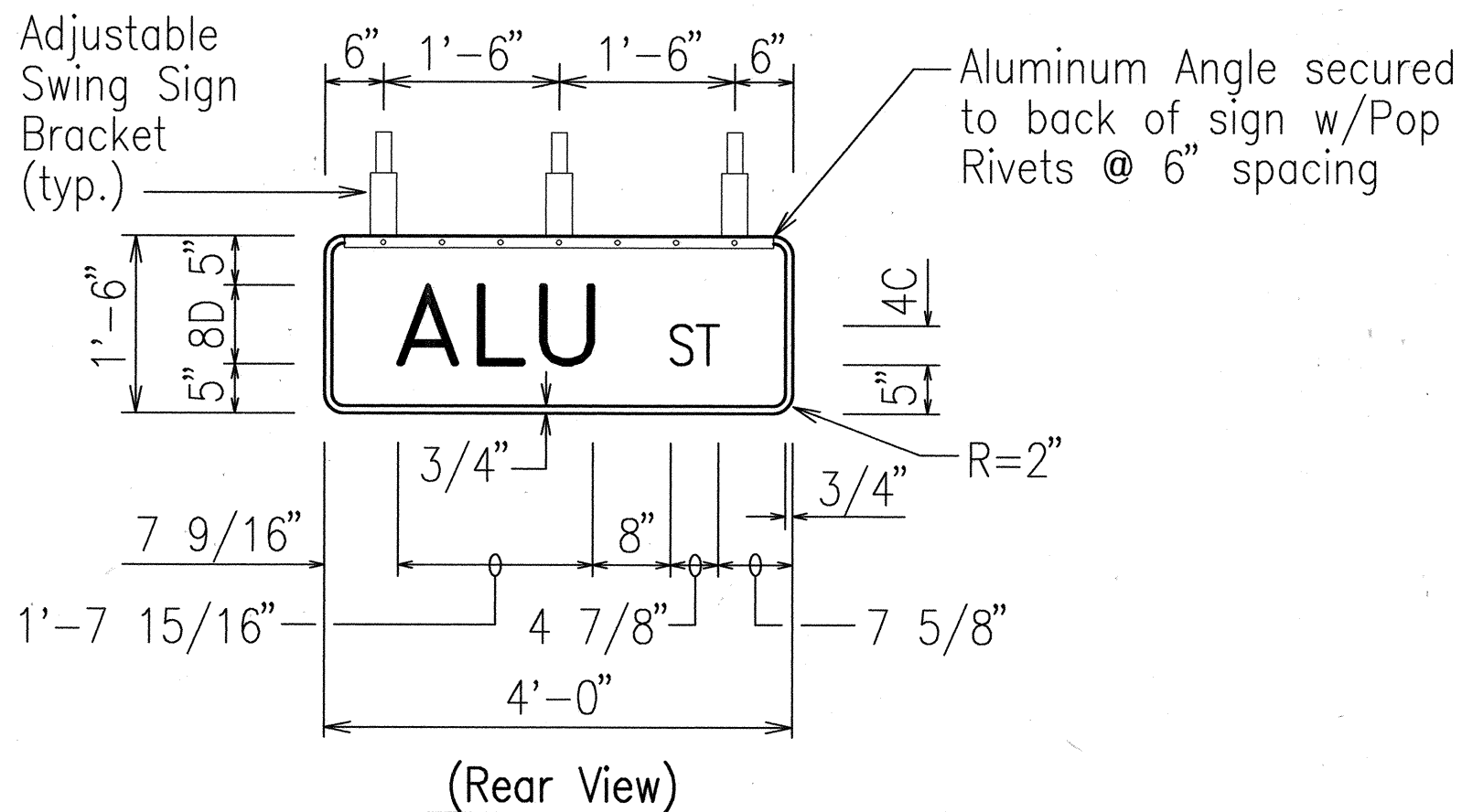
ADJUSTABLE LENGTH SWING SIGN BRACKET

NOTES

1. Sign shall be new Street Name Sign. The Contractor shall provide the same message on the front and back side of the sign. Payment will not be made separately but shall be considered as one unit.
2. Colors:
Legend - White (Reflectorized)
Background - Green (Reflectorized)
3. All panels shall be reflectorized with Type reflective sheeting in accordance with Section 712.20 of the Standard Specifications.
4. Borders and messages shall conform to details as shown on the plans and as specified in the MUTCD.
5. Sign mounting prackets, aluminum angle, fixtures, fasteners and all necessary hardware and equipment, tools, labor, materials and other incidentals for installation, will not be paid for separately but shall be considered incidental to street name sign installation.
6. All signs shall conform to Section 621 of the Standard Specifications and the latest editions and amendments of the following FHWA publications:
 - a. "Manual on Uniform Traffic Control Devices for Streets and Highways" (MUTCD)
 - b. "Standard Highway Signs"
 - c. "Standard Alphabets for Highway Signs"



STREET NAME SIGN MOUNTING ON MAST ARM



PANEL & SWING BRACKET LAYOUT FOR STREET NAME SIGN

ORIGINAL PLAN NOTE BOOK No.	SURVEY PLOTTED BY	DATE
	DESIGNED BY	
	QUANTITIES BY	
	CHECKED BY	



THIS WORK WAS PREPARED BY ME OR UNDER MY SUPERVISION.

Bernard P. Kea

STATE OF HAWAII DEPARTMENT OF TRANSPORTATION HIGHWAYS DIVISION	
SIGN MOUNTING DETAIL	
LIKELIKE HIGHWAY	
Inters. Improvements at Alu Street	
PROJECT NO. 63A-02-96	
Not to Scale	Date : FEB. 1997
SHEET No. 1	OF 1 SHEETS