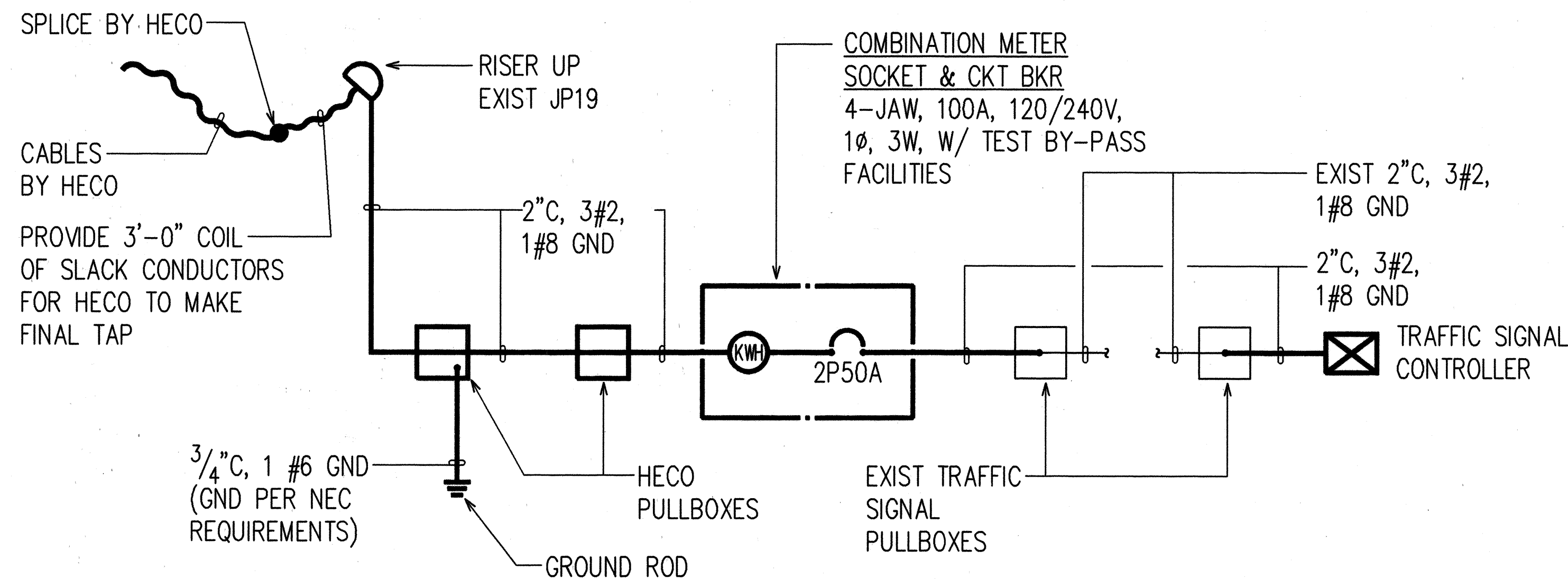
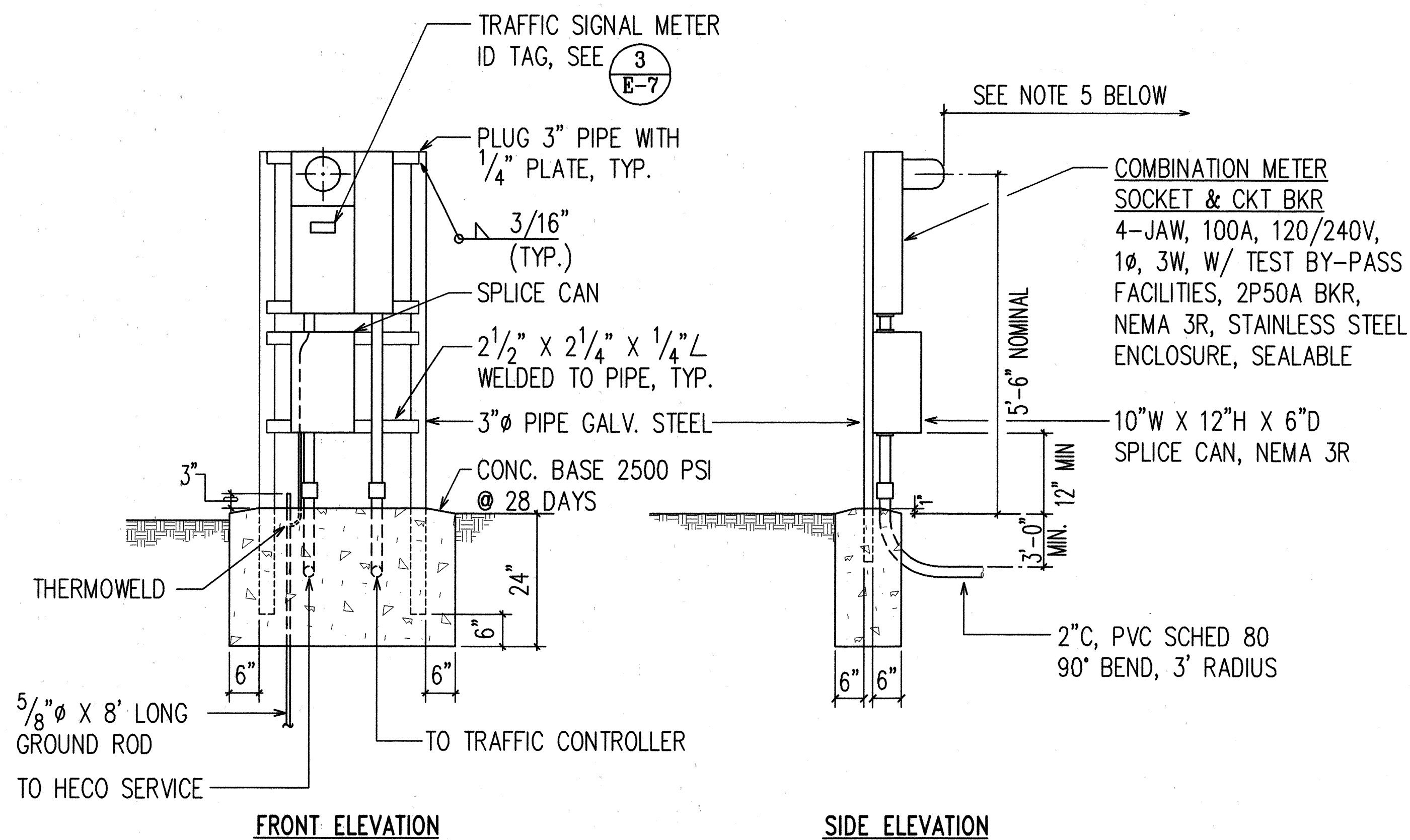


FED. ROAD DIST. NO.	STATE	PROJ. NO.	FISCAL YEAR	SHEET NO.	TOTAL SHEETS
HAWAII	HAW.	63A-02-96	1997	12	19

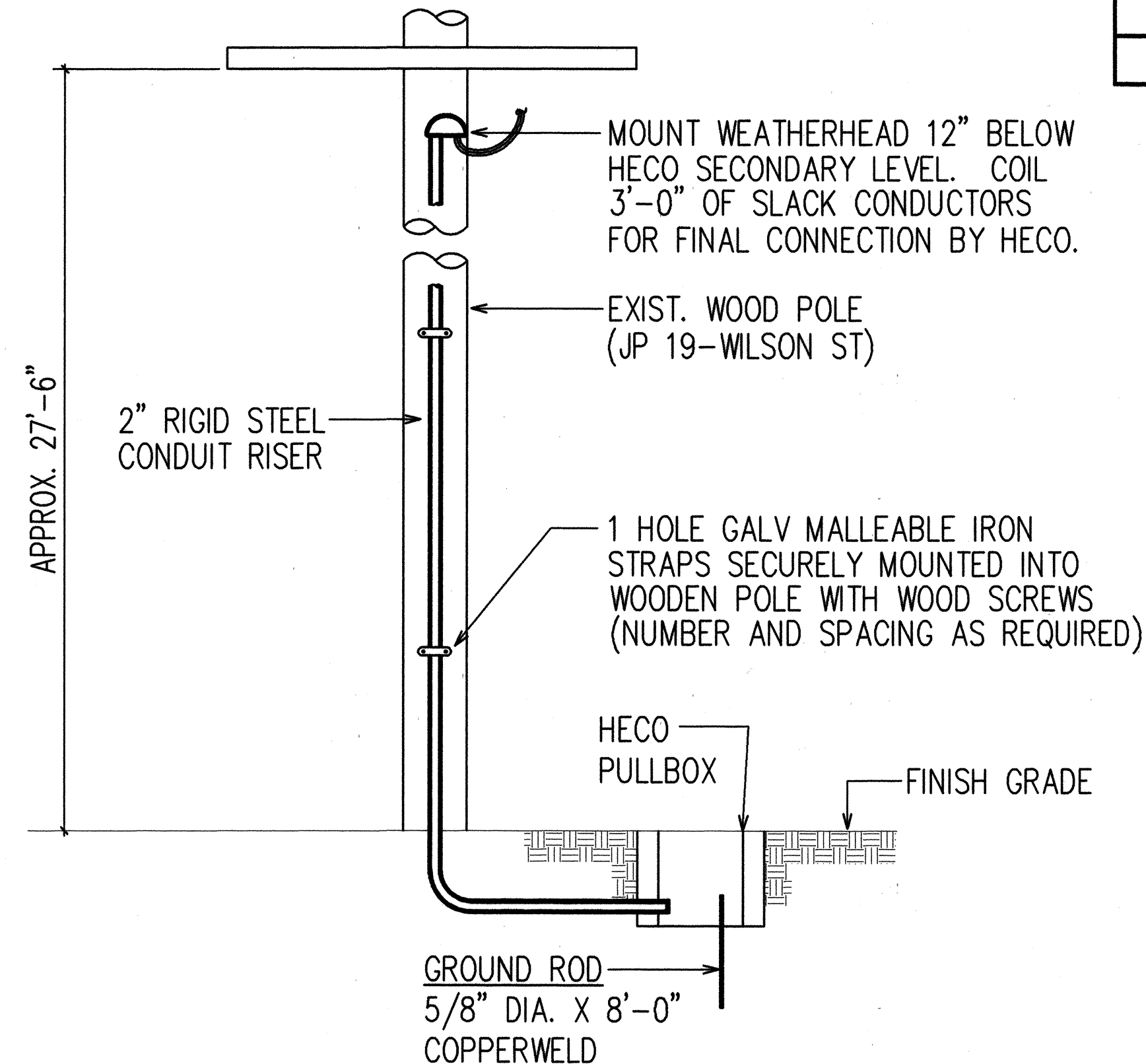


**ONE-LINE DIAGRAM**

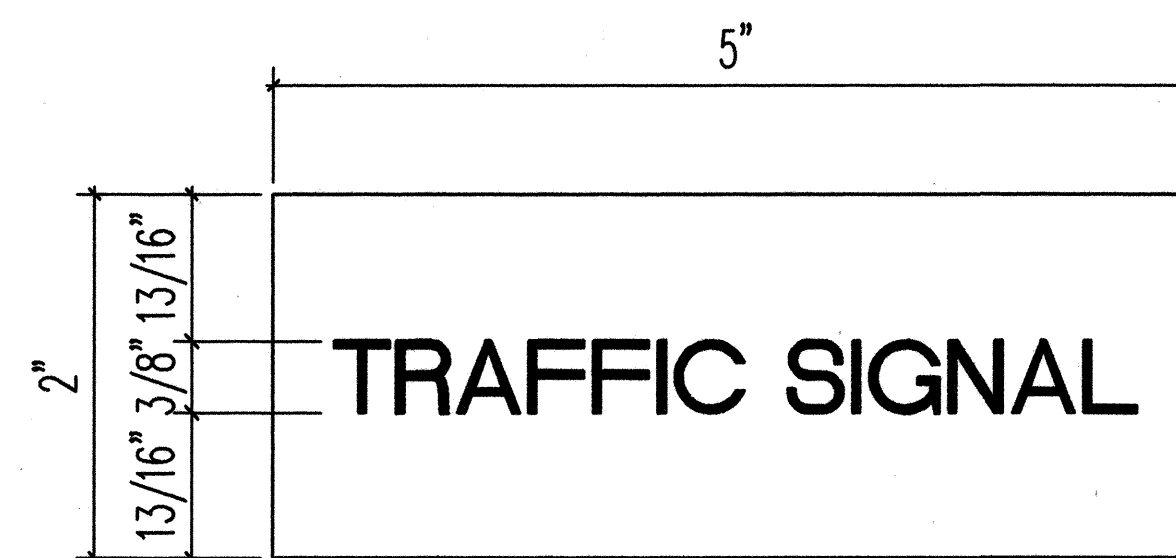


- NOTES:**
1. ALL CONDUITS TO CONTAIN A POLYOLEFIN PULL LINE (JET LINE CAT #232 OR EQUIV)
  2. THE INSTALLATION OF THE METER PEDESTAL FOR UNDERGROUND SERVICE WILL NOT BE PAID FOR SEPARATELY BUT CONSIDERED INCIDENTAL TO THE METER SOCKET AND BREAKER.
  3. PEDESTAL SHALL BE HOT-DIPPED GALVANIZED AFTER FABRICATION.
  4. ALL FASTENING BOLTS, NUTS & WASHERS SHALL BE STAINLESS STEEL.
  5. PROVIDE 4 FT CLEARANCE IN FRONT OF METER.

**2 ELECTRICAL SERVICE DETAIL**  
NOT TO SCALE

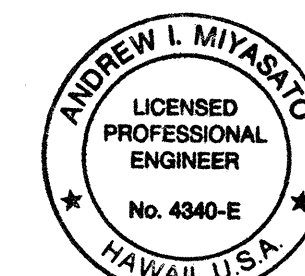


**1 NEW CONDUIT RISER ON EXIST WOOD POLE**  
NOT TO SCALE

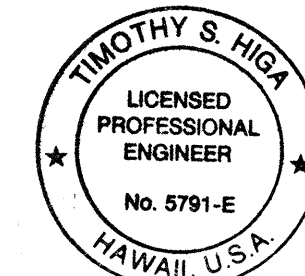


- NOTES:**
1. USE 3-PLY LAMINATED FLEXIBLE PLASTIC, BLACK-WHITE-BLACK THICKNESS: BLACK CAP SHEET - 0.010", WHITE BASE SHEET - 0.052", BLACK BASE SHEET - 0.010".
  2. ATTACH TO METER SOCKET USING SCOTCH 3M BRAND VERY HIGH BOND (VHB) DOUBLE COATED ACRYLIC FOAM TAPE OR EQUIVALENT.
  3. LETTERS/NUMBERS SHALL BE 3/8" HIGH, 1/16" STROKE (WHITE IN COLOR).
  4. LETTERS/NUMBERS AREA INSCRIBED BY CUTTING THROUGH "BLACK CAP SHEET" TO EXPOSE WHITE LETTERS/NUMBERS.

**3 METER ID TAG DETAIL**  
NOT TO SCALE



PRINCIPAL-IN-CHARGE  
*Andrew I. Miyasaka*  
RONALD N.S. HO & ASSOCIATES, INC.  
2/6/97



THIS WORK WAS PREPARED BY ME OR UNDER MY SUPERVISION.  
*Timothy S. Higa*  
RONALD N.S. HO & ASSOCIATES, INC.  
2/6/97

STATE OF HAWAII  
DEPARTMENT OF TRANSPORTATION  
HIGHWAYS DIVISION

**ONE-LINE DIAGRAM, ELECTRICAL  
SERVICE EQUIPMENT**

**LIKELIKE HIGHWAY**  
Inters. Improvements at Alu St.  
PROJECT NO. 63A-02-96

SCALE: AS NOTED DATE: FEB 1997

SHEET No. E-7 OF E-13 SHEETS