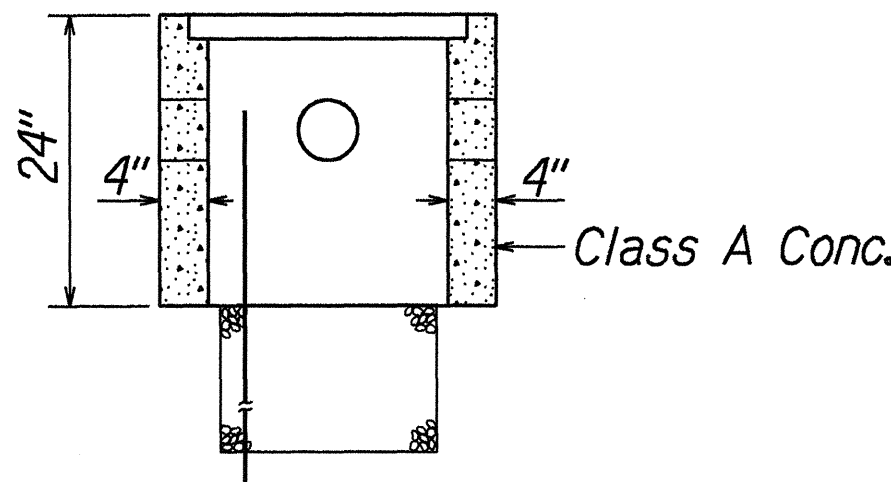
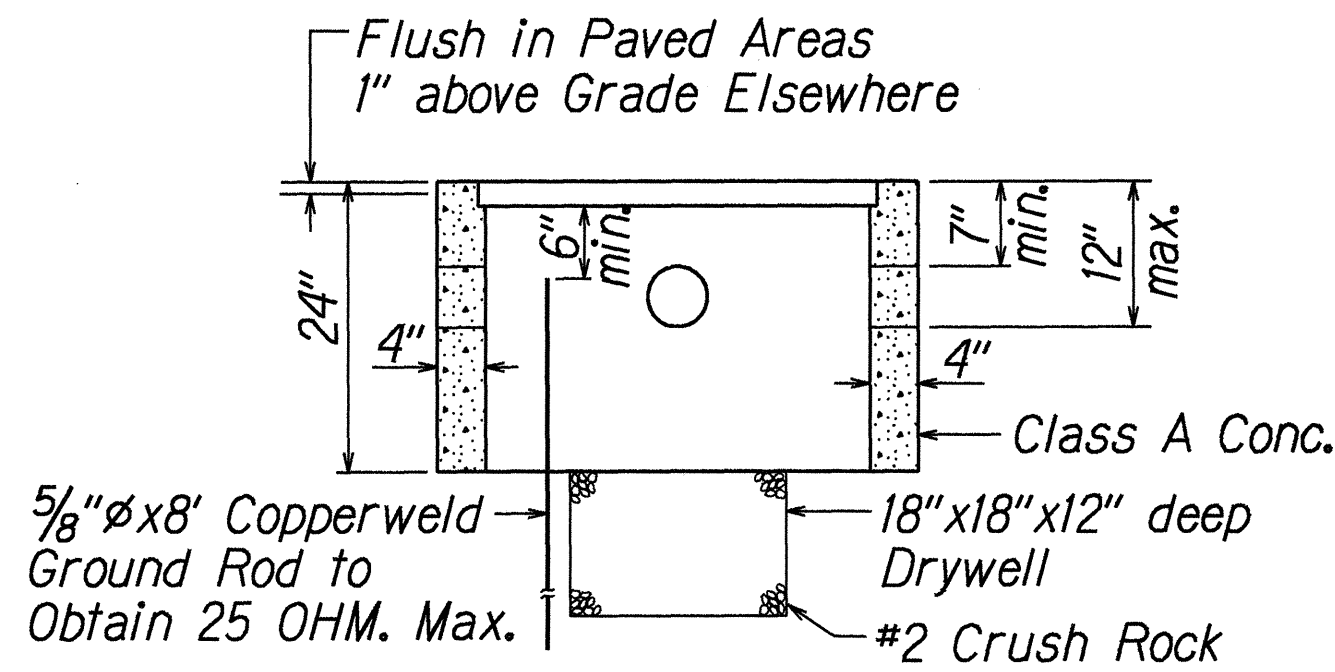
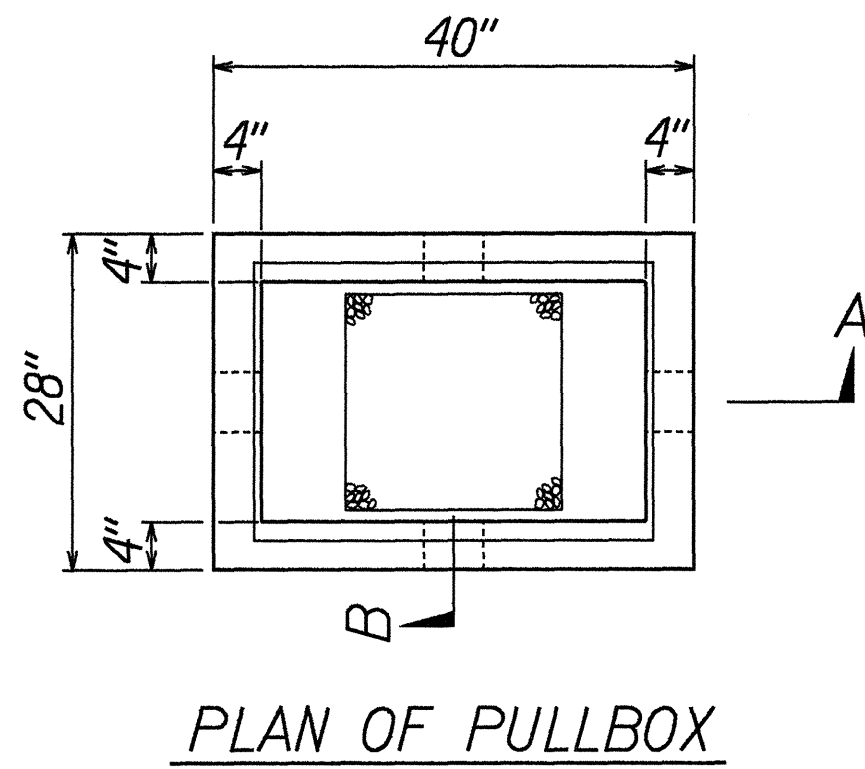
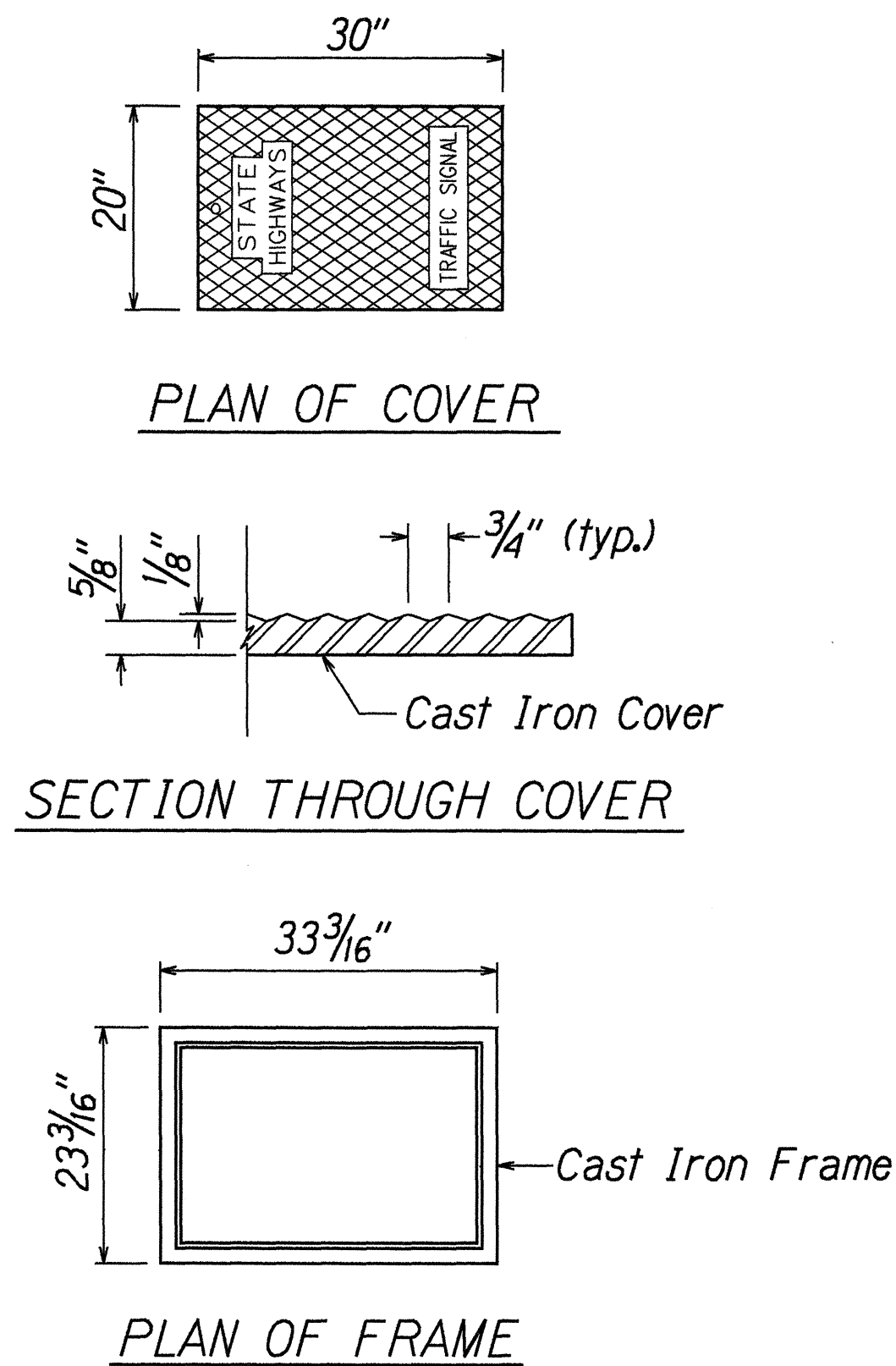


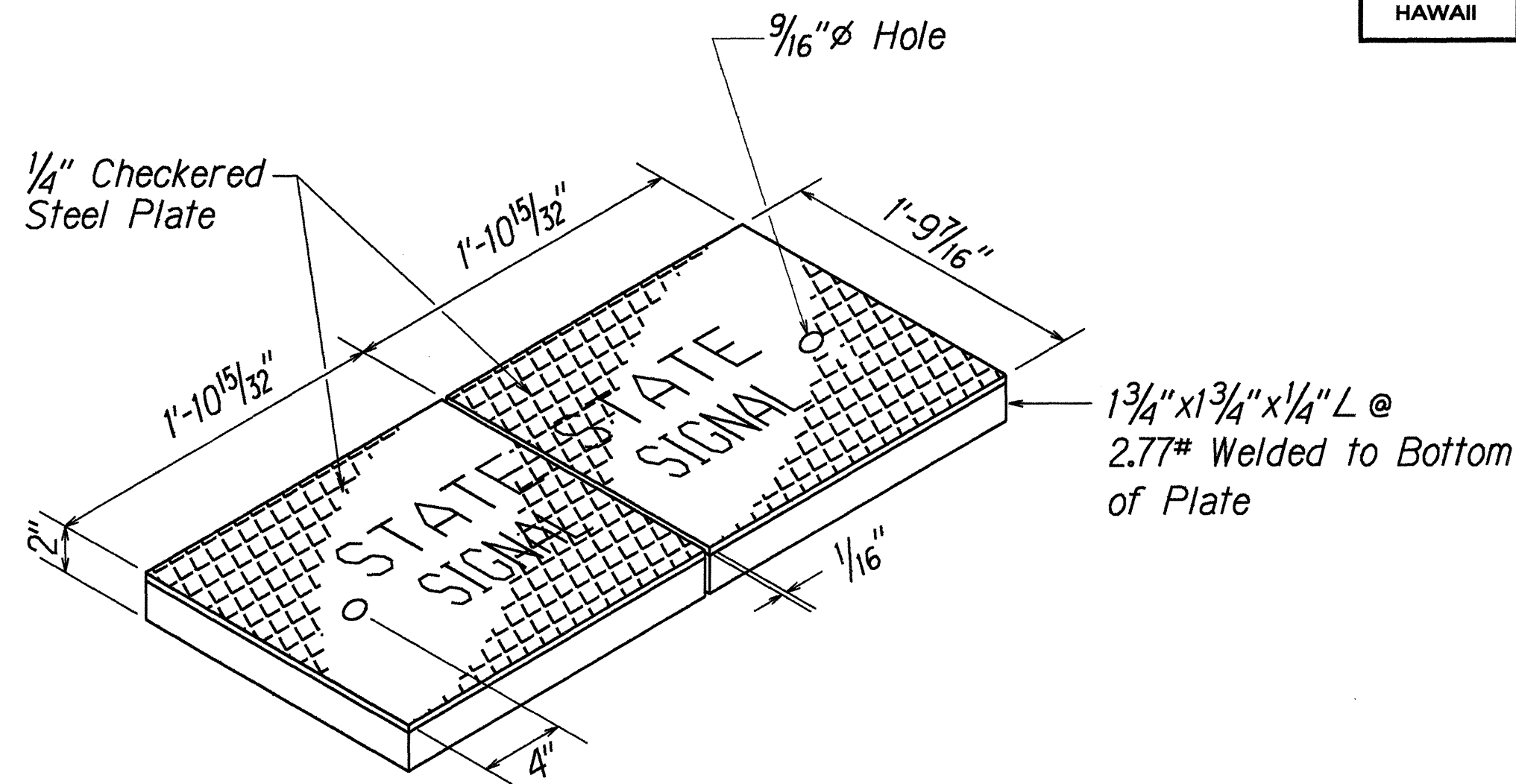
FED. ROAD DIST. NO.	STATE	PROJ. NO.	FISCAL YEAR	SHEET NO.	TOTAL SHEETS
HAWAII	HAW.	63A-01-96	1996	10	11



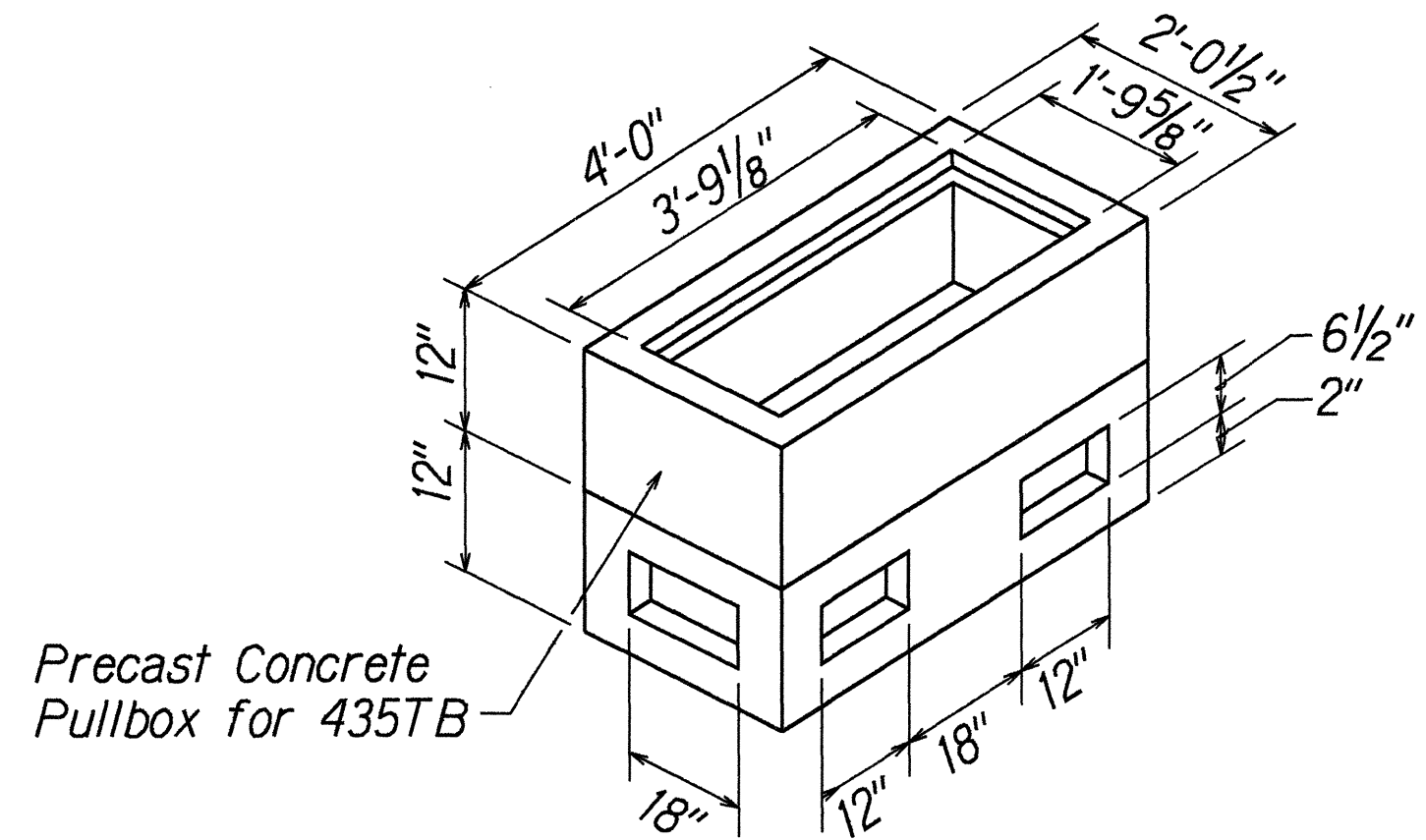
TYPE "C" PULLBOX (Traffic Signal)
Not to Scale



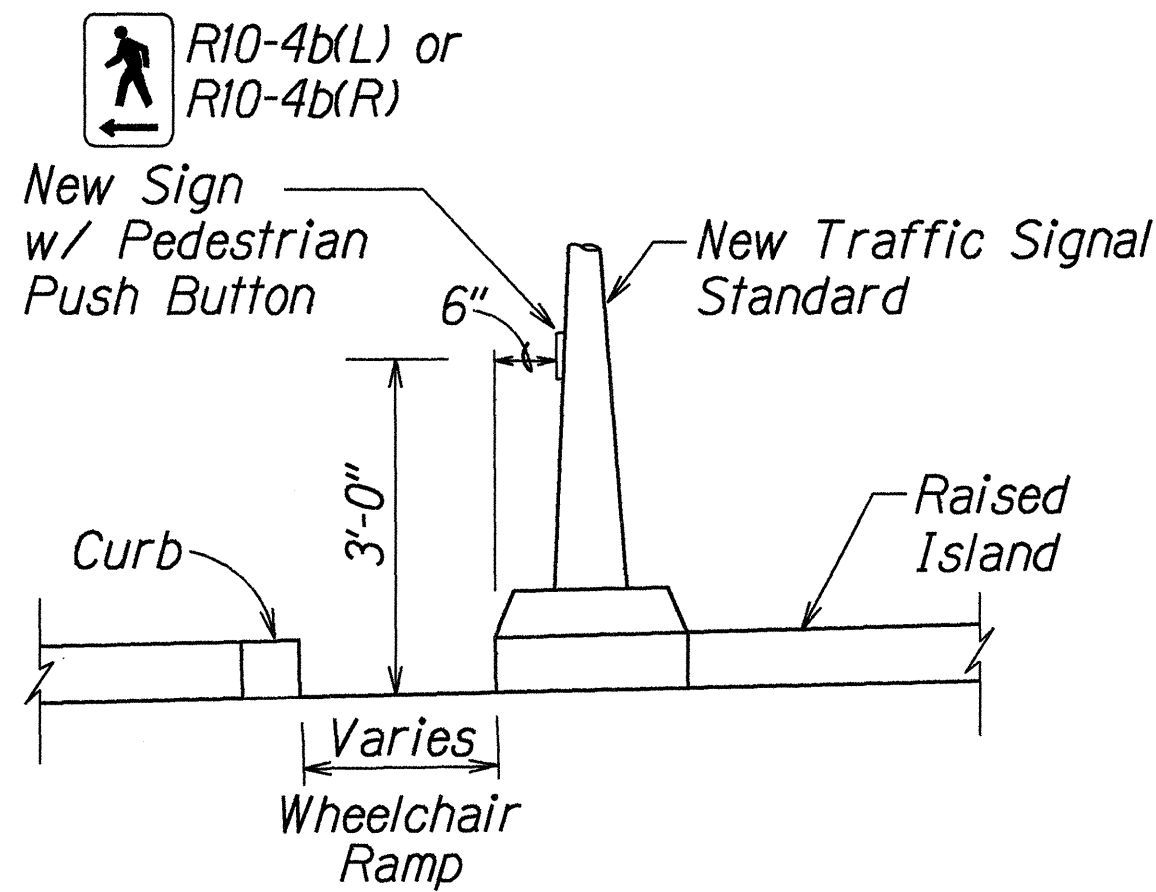
Note: Provide Ground Rod in all Pullboxes adjacent to Standards, Pedestals, Controllers, and other locations specified by the Engineer.



- NOTES:
- After fabrication of covers, Galvanize or apply 2 coats of ZRC (Zinc Rich Coating) to both sides.
 - Install on 6" bed of #3 Crushed Rock.



TYPE "D" PULLBOX (Traffic Signal)
Not to Scale



Not to Scale

DATE	10/07/96
SURVEY PLANNED BY	...
DRAWN BY	...
DESIGNED BY	...
QUANTITIES BY	...
CHECKED BY	...

STATE OF HAWAII
DEPARTMENT OF TRANSPORTATION
HIGHWAYS DIVISION

TRAFFIC SIGNAL
PULLBOX DETAILS
KALIHI STREET
Intersection Improvements at
Nimitz Highway
Project No. 63A-01-96
Date: Apr., 1996

Not to Scale
SHEET No. 1 OF 1 SHEETS