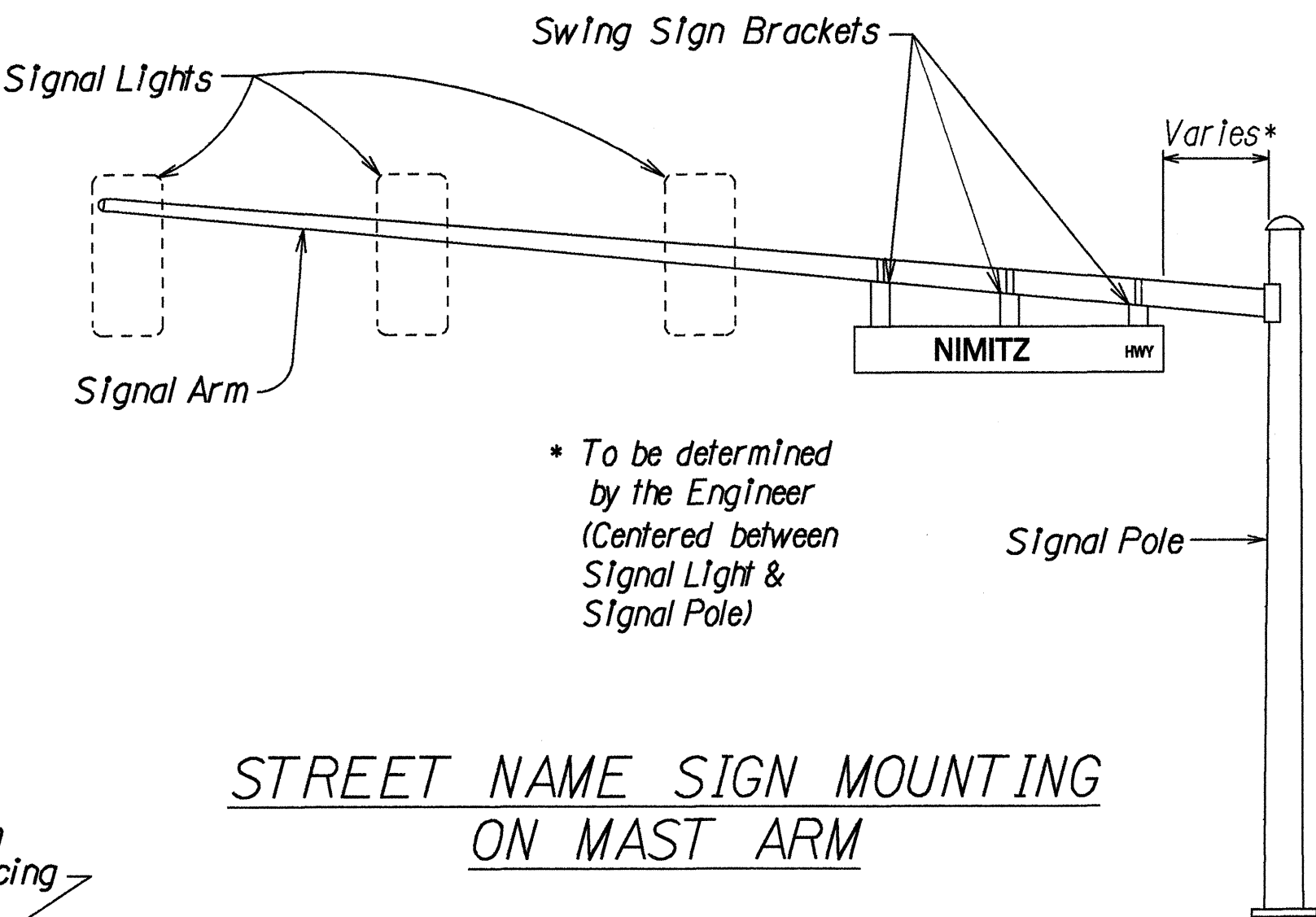


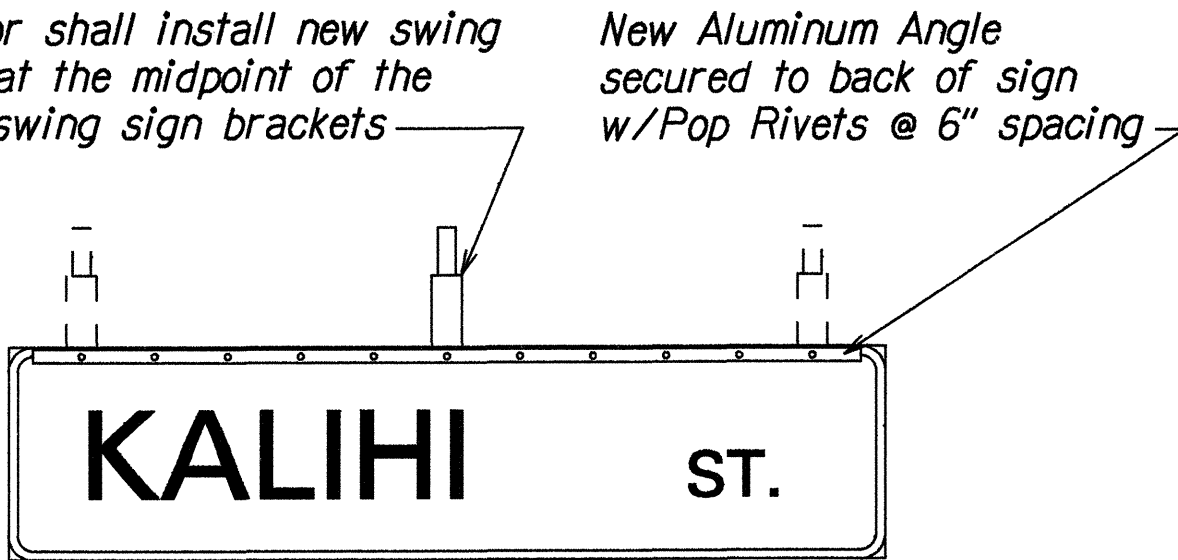
FED. ROAD DIST. NO.	STATE	PROJ. NO.	FISCAL YEAR	SHEET NO.	TOTAL SHEETS
HAWAII	HAW.	63A-01-96	1996	6	11

NOTES:

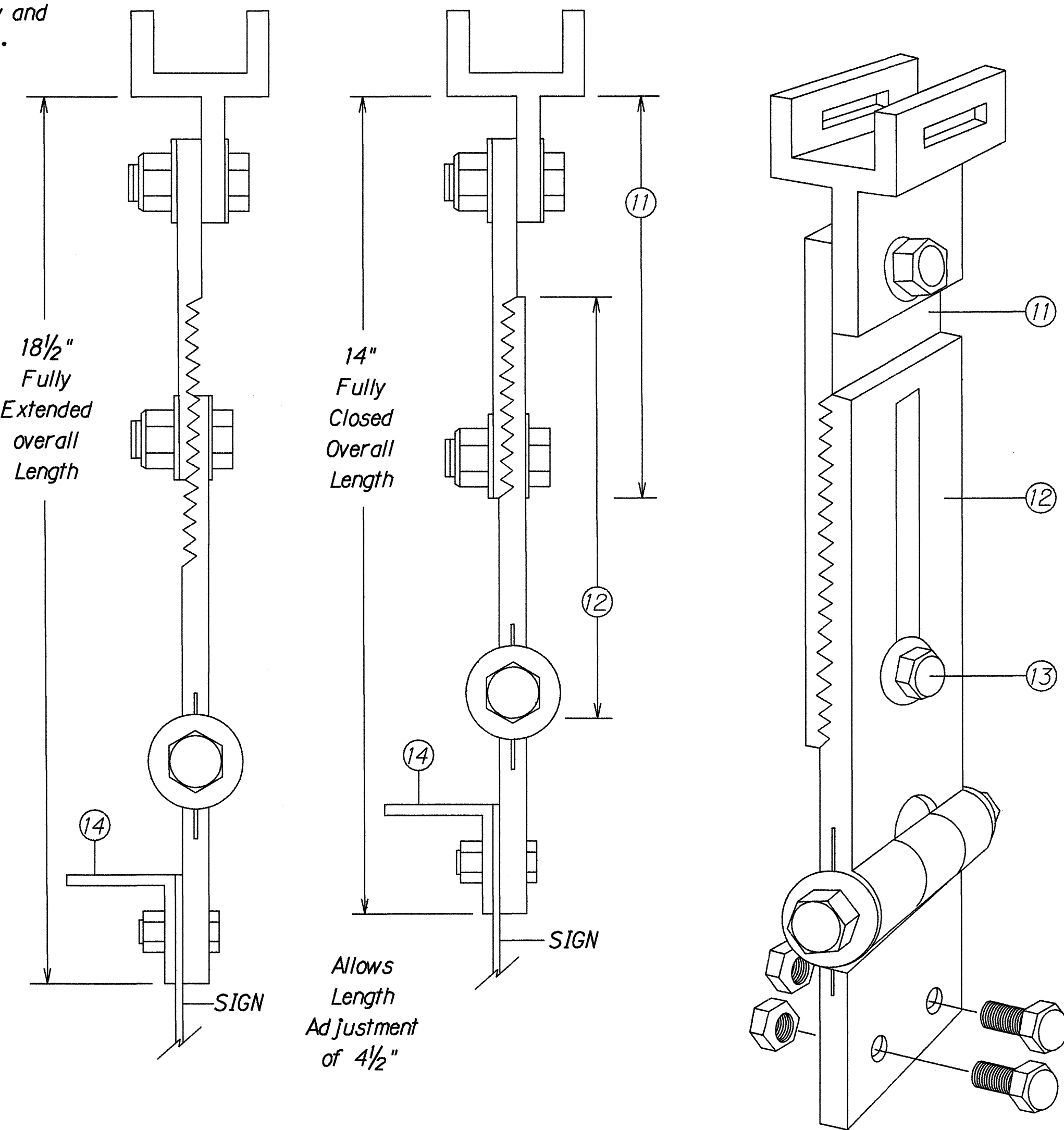
- Signs D3-1 shall be a new Street Name Sign. The Contractor shall provide the same message on the front and back side of the sign. Payment will not be made separately but shall be considered as one unit.
- Colors:  
Legend - White (Reflectorized)  
Background - Green (Reflectorized)
- All panels shall be reflectorized with Type B reflective sheeting in accordance with Section 712.20 of the Standard Specifications.
- Borders and messages shall conform to details as shown on the plans and as specified in the MUTCD.
- Sign mounting brackets, aluminum angle, fixtures, fasteners, and all necessary hardware, and equipment, tools, labor, materials and other incidentals for installation, will not be paid for separately but shall be considered incidental to street name sign installation.
- All signs shall conform to section 621 of the Standard Specifications and the latest editions and amendments of the following FHWA publications:  
a. "Manual on Uniform Traffic Control Devices for Streets and Highways" (MUTCD)  
b. "Standard Highway Signs"  
c. "Standard Alphabets for Highway Signs"
- The Contractor shall install an additional Swing Sign Bracket with Aluminum Angle on the existing "Kalihi St." street name signs (2 each) mounted on the existing traffic signal mast arms. The accepted quantities of Swing Sign Brackets with Aluminum Angle will be paid for at the contract unit price per each, complete in place. The contract unit price paid shall be full compensation for all necessary hardware, equipment, tools, labor, materials, and other incidentals for the installation of the new sign brackets.
- The Additional Swing Sign Bracket with Aluminum Angle shall be paid under Item No. 621J550 - Swing Sign Bracket of the Proposal Schedule.



STREET NAME SIGN MOUNTING ON MAST ARM

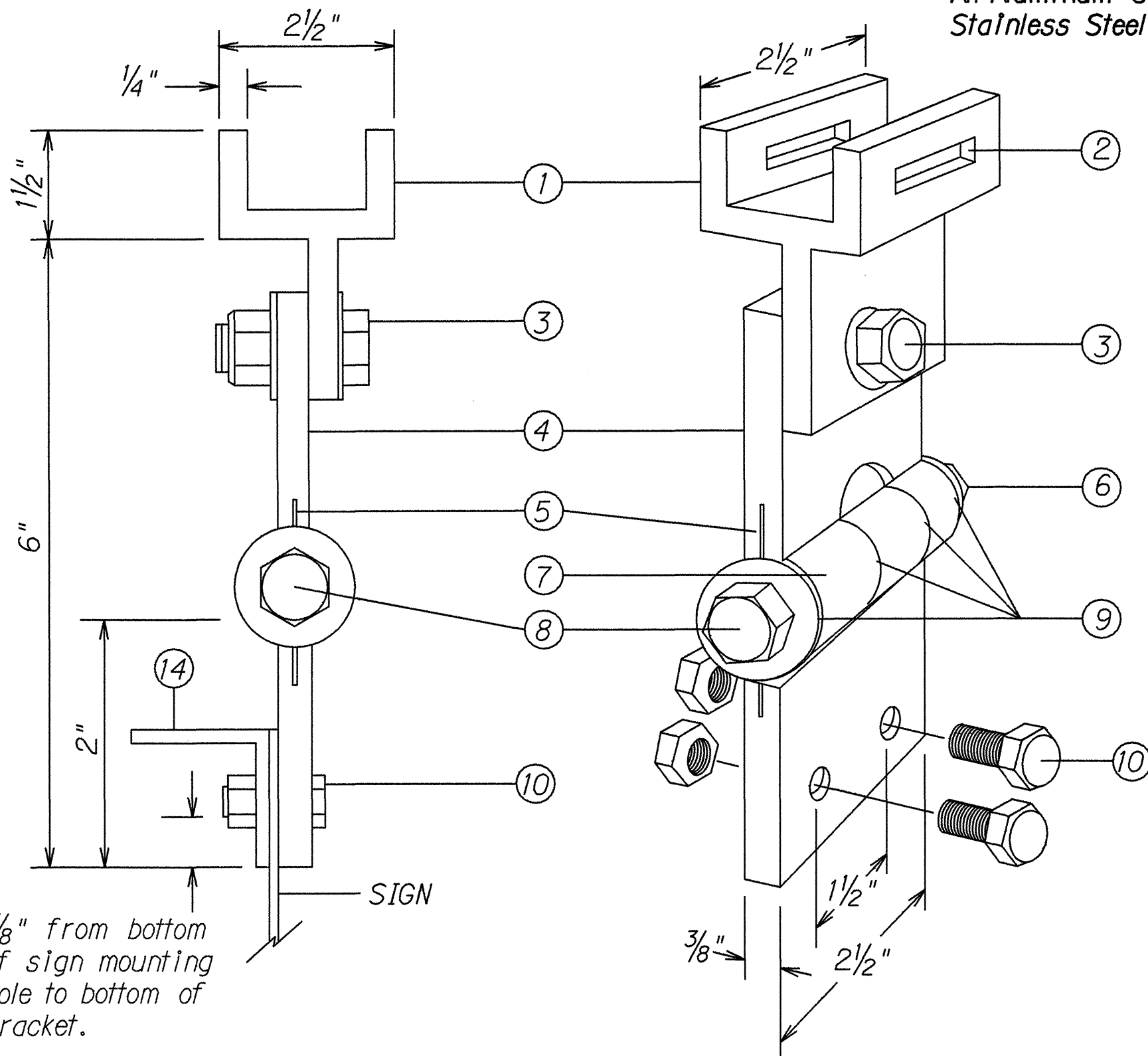


(Rear View)  
TYPICAL SWING BRACKET LAYOUT



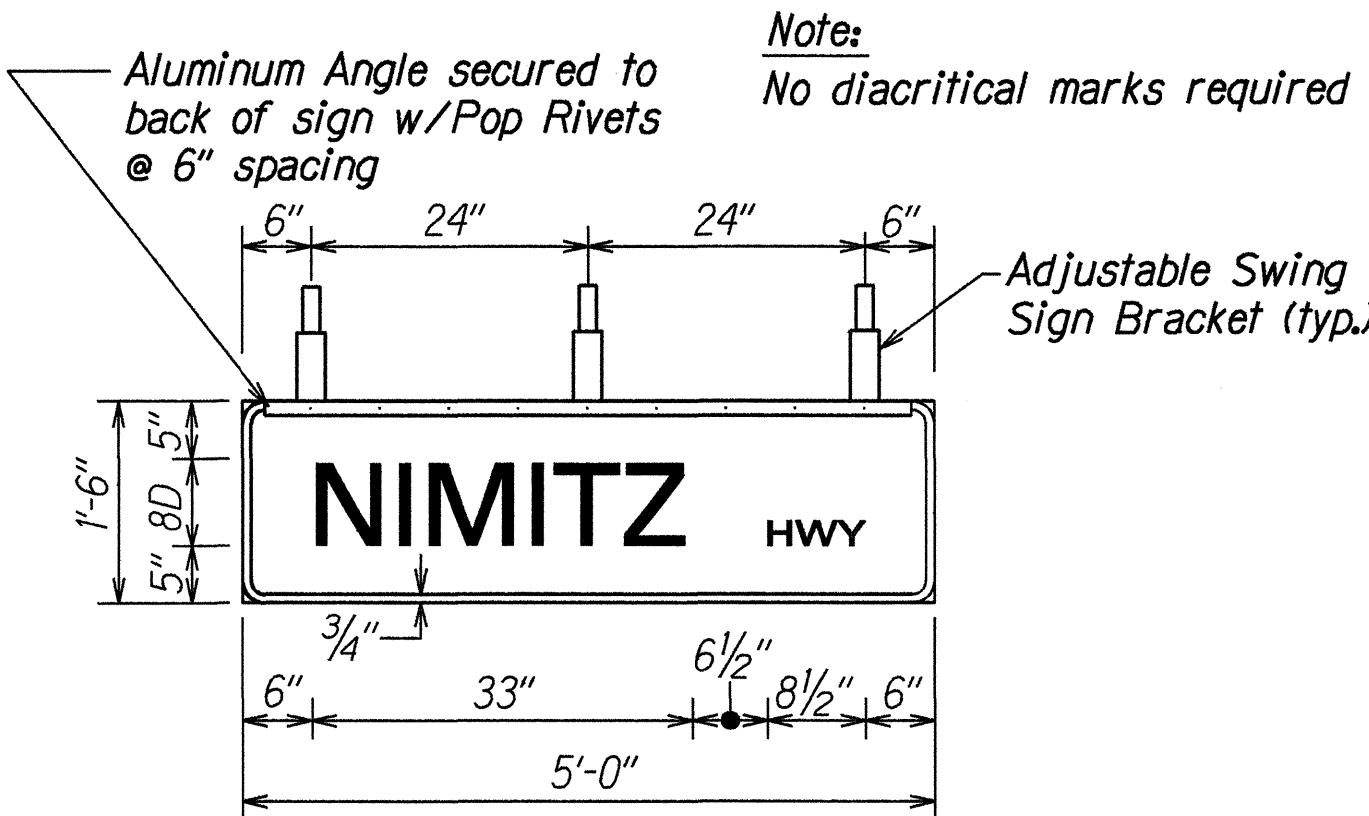
ADJUSTABLE LENGTH SWING SIGN BRACKET

All Aluminum 6061T6 Alloy and Stainless Steel Components.



FIXED LENGTH NON-ADJUSTABLE SWING SIGN BRACKET

- Pivotal Upper Bracket
- 1 5/8" x 1/4" Slot for double strapping to electrolier mast arm. (M2G-34S(HD) .030" x 3/4" Heavy Duty Stainless Steel Strap with M2G-34B(HD) Buckle recommended.)
- 1/2" - 13 x 1 1/2" Stainless Steel Hex Head Bolt with Stainless Steel Hex Lock Nut and 1/16" Stainless Steel Washer (both sides). Allows upper bracket to pivot and align with electrolier mast arm.
- 6" Overall drop with Fixed Length Sign Bracket
- Stainless Steel Dampener Spring (Removable)
- Stainless Steel Hex Lock Nut with 1/16" Stainless Steel Washer
- 1" O.D. Axle Housing
- 1/2" - 13 x 4" Stainless Steel Hex Head Bolt with 1/16" Stainless Steel Washer
- O1111te Bushing
- Sign Mounting Sets, consisting of two each 5/16" - 18 x 1" Stainless Steel Hex Head Bolt with Stainless Steel Hex Lock Nut. Two holes on 1 1/2" centers provide positive lock sign mounting to bracket.
- 8 1/4" overall length Upper Adjustable Sign Bracket section
- 9" overall length Lower Adjustable Sign Bracket section, including Axle Housing (8" overall length to top of Axle Housing)
- 1/2" - 13 x 1 1/2" Stainless Steel Hex Bolt with Stainless Steel Hex Lock Nut and 1/16" Stainless Steel Washers (both sides). Loosen lock nut, adjust bracket teeth to level sign.
- 1 1/4" x 1 1/4" x 1/8" Aluminum Angle



D3-1 (Rear View)  
TYPICAL PANEL & SWING BRACKET LAYOUT FOR STREET NAME SIGN

Note: Dimensions may vary slightly.

ORIGINAL PLAN	DATE	1/10/96
DRAWN BY	DESIGNED BY	DESIGNED BY
NOTE BOOK	QUANTITIES BY	QUANTITIES BY
1/2" May	CHECKED BY	CHECKED BY
2/11/96		

STATE OF HAWAII  
DEPARTMENT OF TRANSPORTATION  
HIGHWAYS DIVISION

**SWING SIGN BRACKET DETAIL**  
**KALIHI STREET**  
Intersection Improvements at  
Nimitz Highway  
Project No. 63A-01-96  
Not to Scale  
Date: Apr., 1996

SHEET No. 1 OF 1 SHEETS