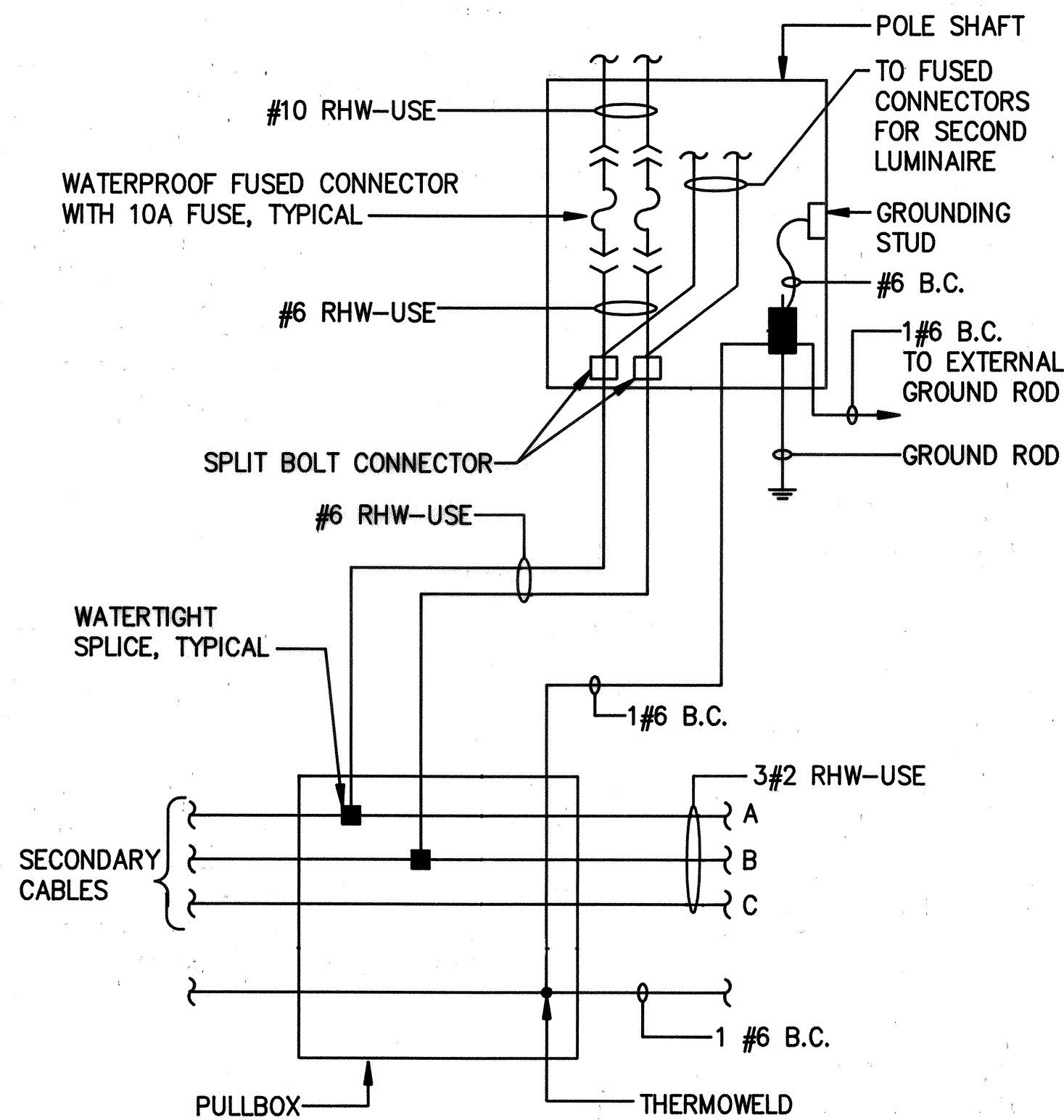


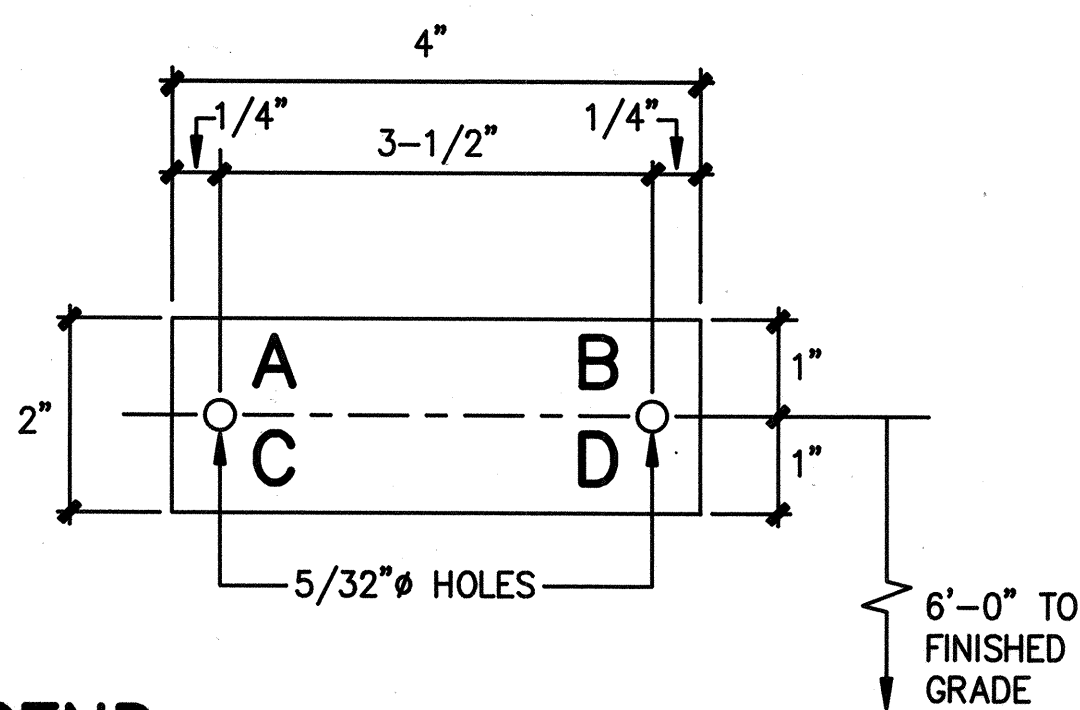
FED. ROAD DIST. NO.	STATE	FED. AID PROJ. NO.	FISCAL YEAR	SHEET NO.	TOTAL SHEETS
HAWAII	HAW.	63A-02-90	1991	12	13

GENERAL NOTES

- ALL LUMINAIRE SHALL BE HIGH PRESSURE SODIUM WITH WATTAGE & IES TYPE LIGHT DISTRIBUTION AS SHOWN ON PLANS.
- THE CONTRACTOR SHALL NOTIFY AND COORDINATE WORK WITH THE STATE ELECTRICAL MAINTENANCE SECTION, ADD: 727 KAKOI ST. PHONE NO. 834-4581, 72 HOURS IN ADVANCE OF COMMENCING INSTALLATION OF STREET LIGHT SYSTEM.



A WIRING CONNECTION DIAGRAM
12 NO SCALE



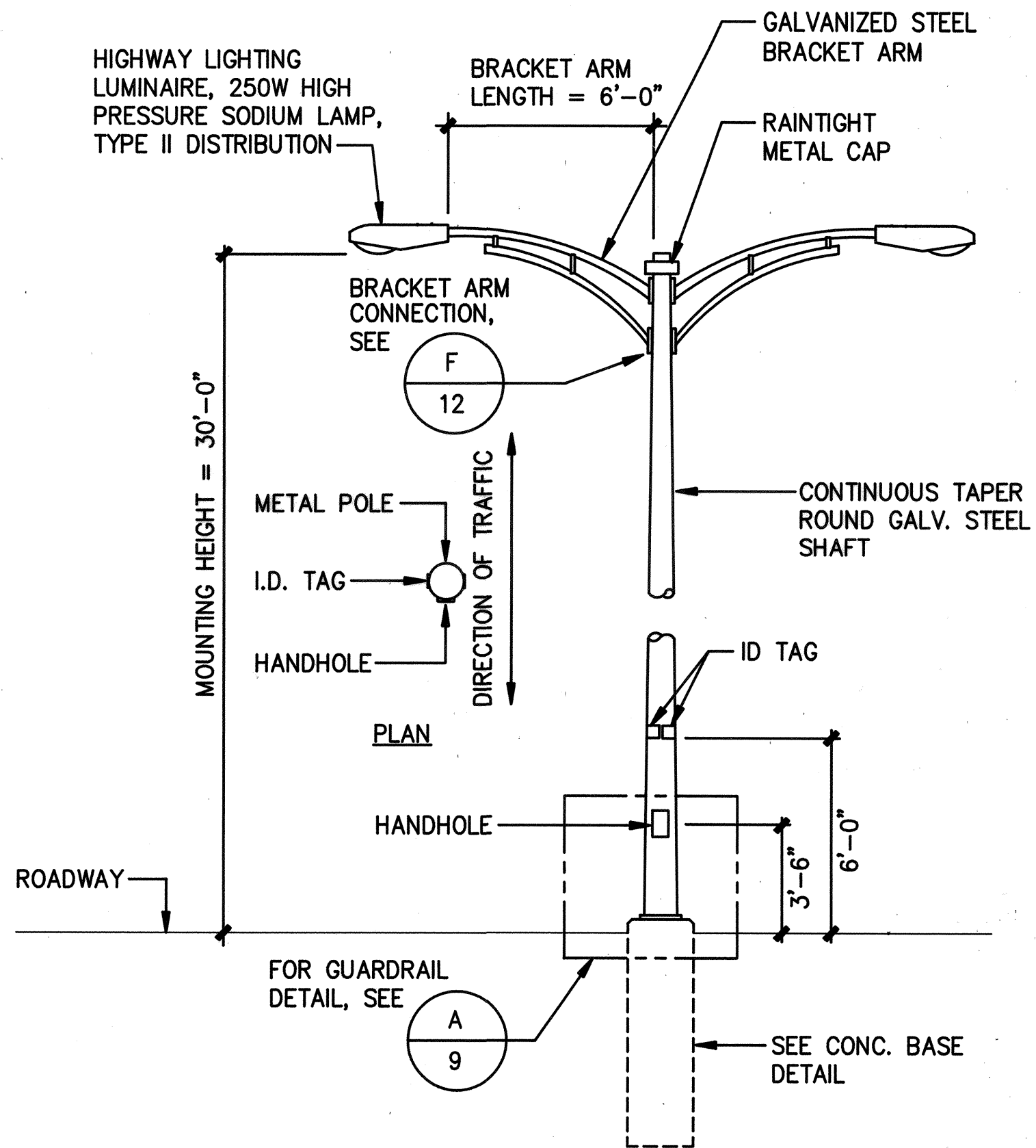
LEGEND:

- A - CONTRACT NUMBER *
- B - LIGHT NUMBER *
- C - LAMP DATA (N FOR H.P.S.) N250
- D - REFRACTOR DATA TYPE II
- * - DATA TO BE COORDINATED WITH DEPARTMENT OF TRANSPORTATION PRIOR TO CONSTRUCTION

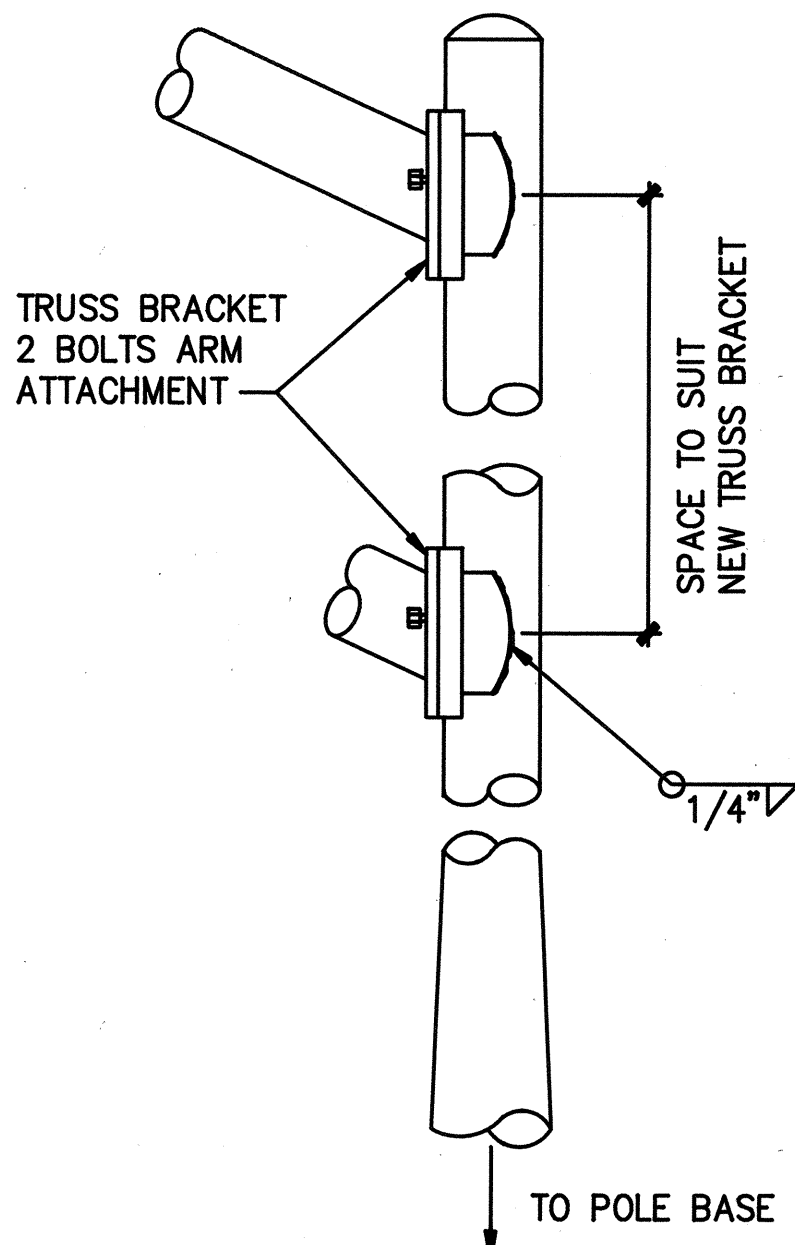
NOTES:

- I.D. TAG SHALL BE 3-PLY BLACK/WHITE/BLACK LAMINATED PLASTIC (E-Z-GRAV TYPE TAG) WITH 5/16" HIGH COMMERCIAL GOTHIC ENGRAVED LETTERS.
- ATTACH TO STEEL POLE WITH NO. 7 CADMIUM PLATED DRIVE SCREWS, NO. 29 DRILL HOLES IN POLE.

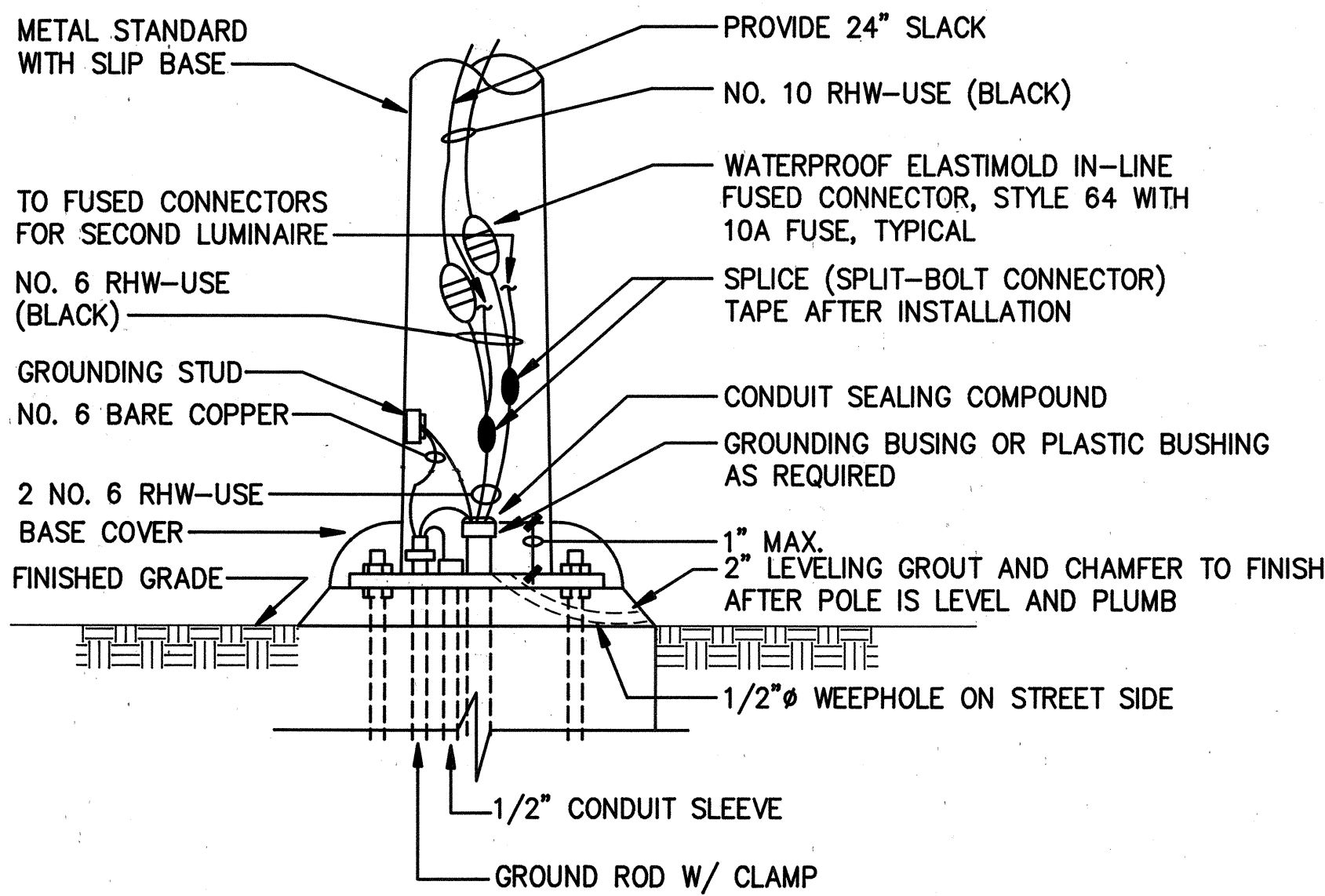
B IDENTIFICATION TAG DETAIL
12 NOT TO SCALE



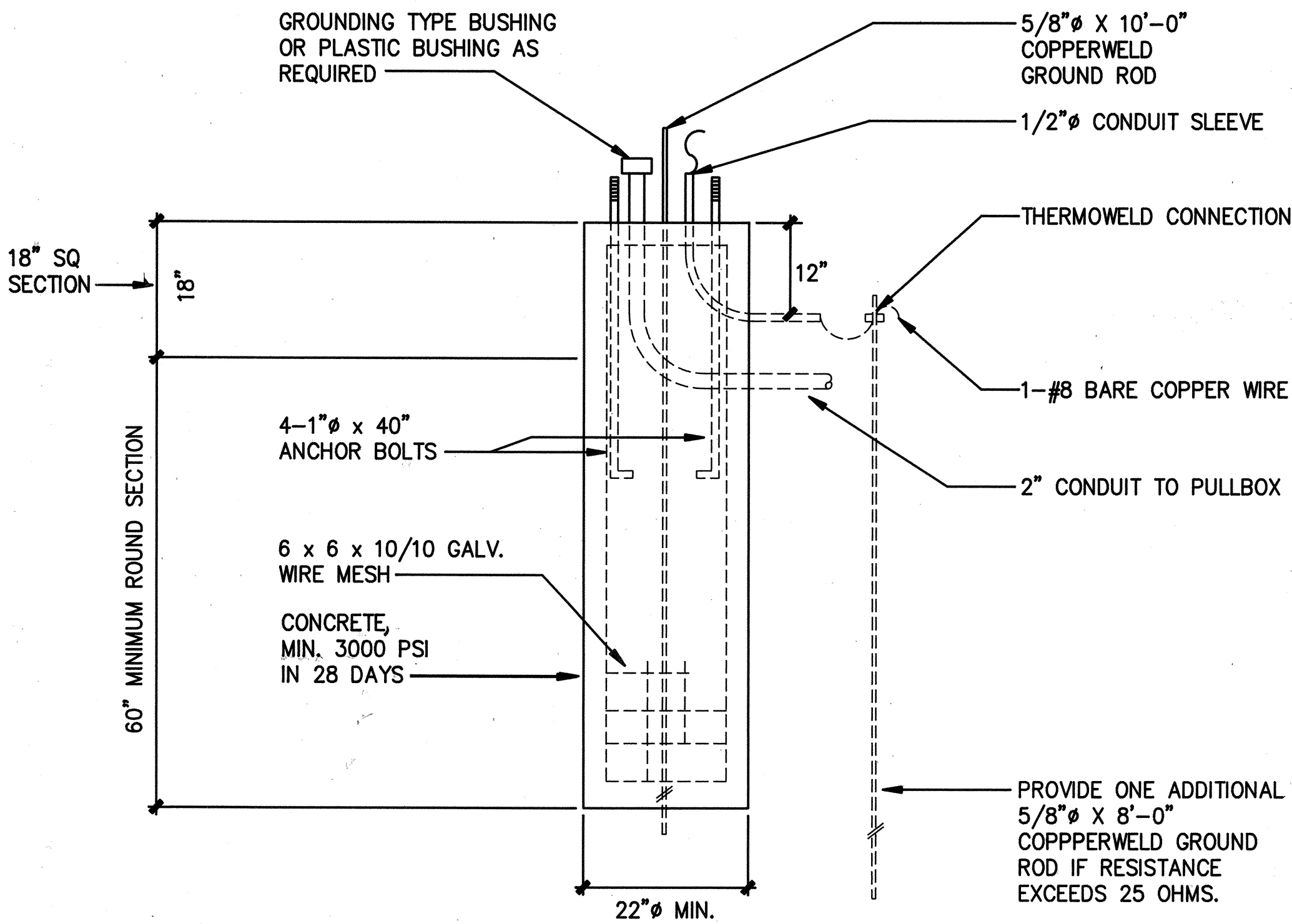
C STREET LIGHT DETAIL
12 NOT TO SCALE



F BRACKET ARM ATTACHMENT DETAIL
12 NOT TO SCALE



D POLE BASE DETAIL
12 NOT TO SCALE



E CONCRETE BASE DETAIL
12 NOT TO SCALE



This work was prepared by me or under my supervision
ECS INC.
By *Lemox K. Nishimura*
Its PROJECT ENGINEER
Date SEPT. 28, 1990

STATE OF HAWAII
DEPARTMENT OF TRANSPORTATION
HIGHWAYS DIVISION

STREET LIGHT POLE DETAILS

LIKELIKE HIGHWAY - HIGHWAY LIGHTS
WILSON TUNNEL TO VALLEY VIEW ROAD
PROJECT NO. 63A-02-90

SCALE: NOT TO SCALE DATE:
SHEET No. 12 OF 13 SHEETS