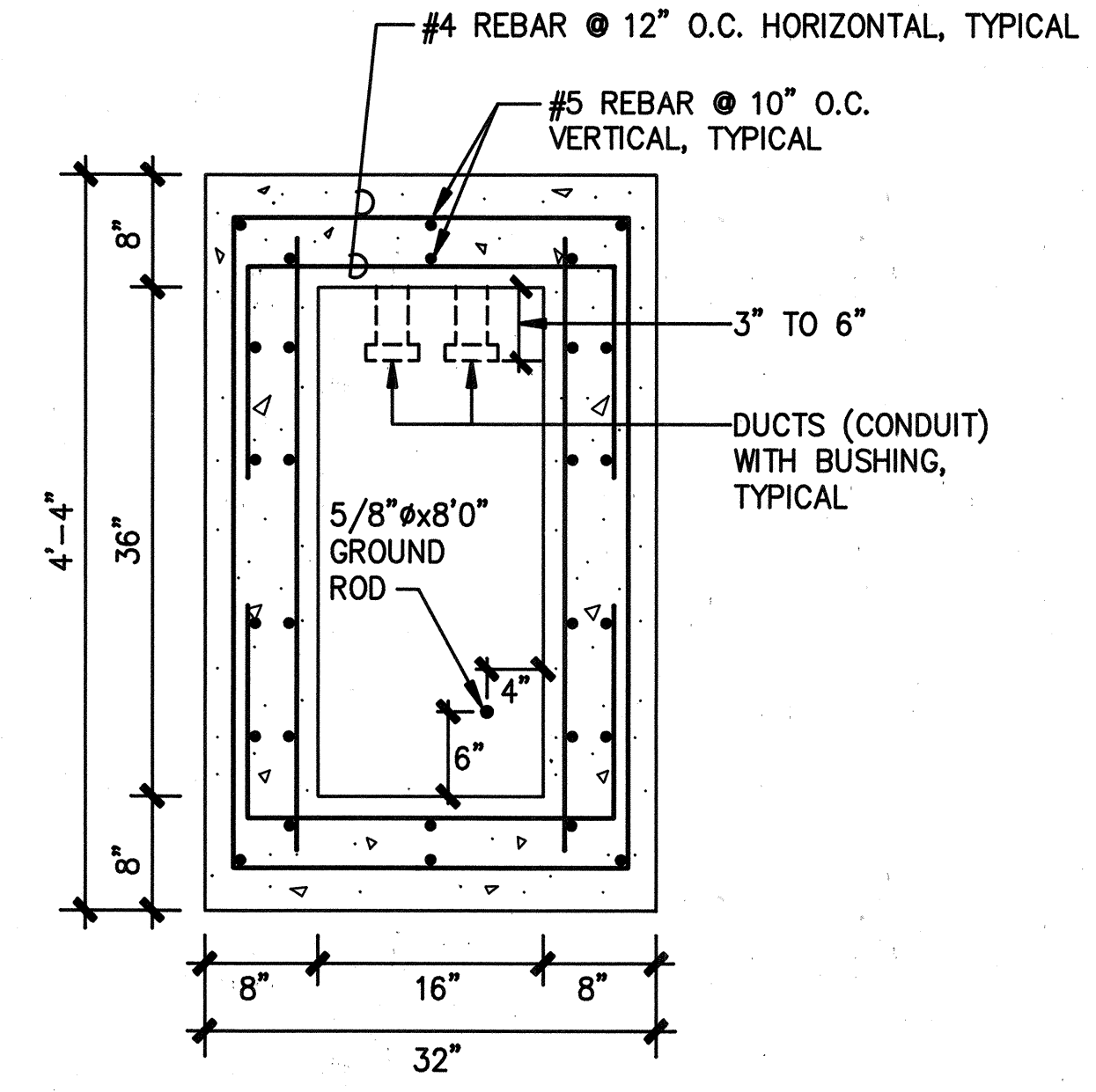
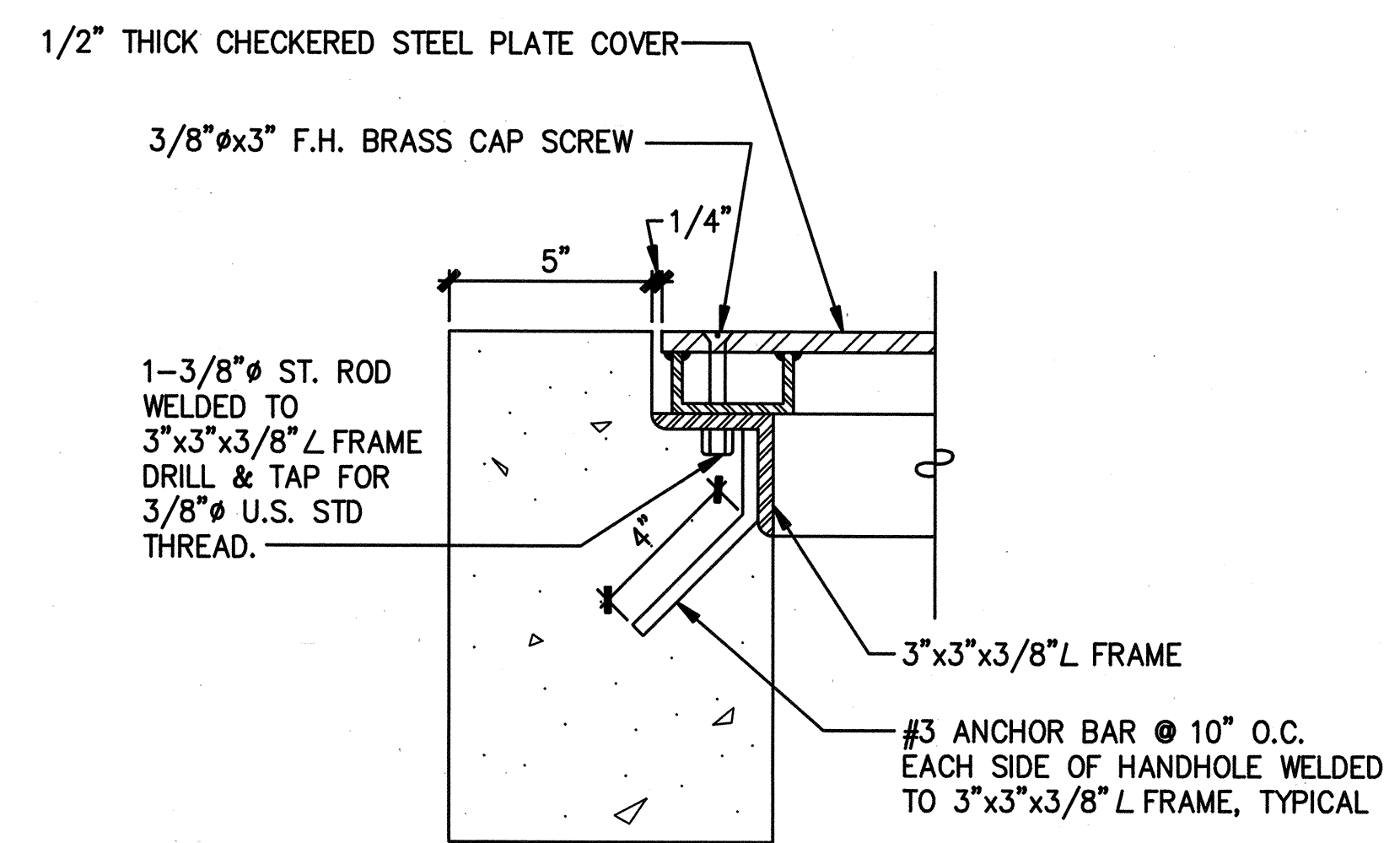


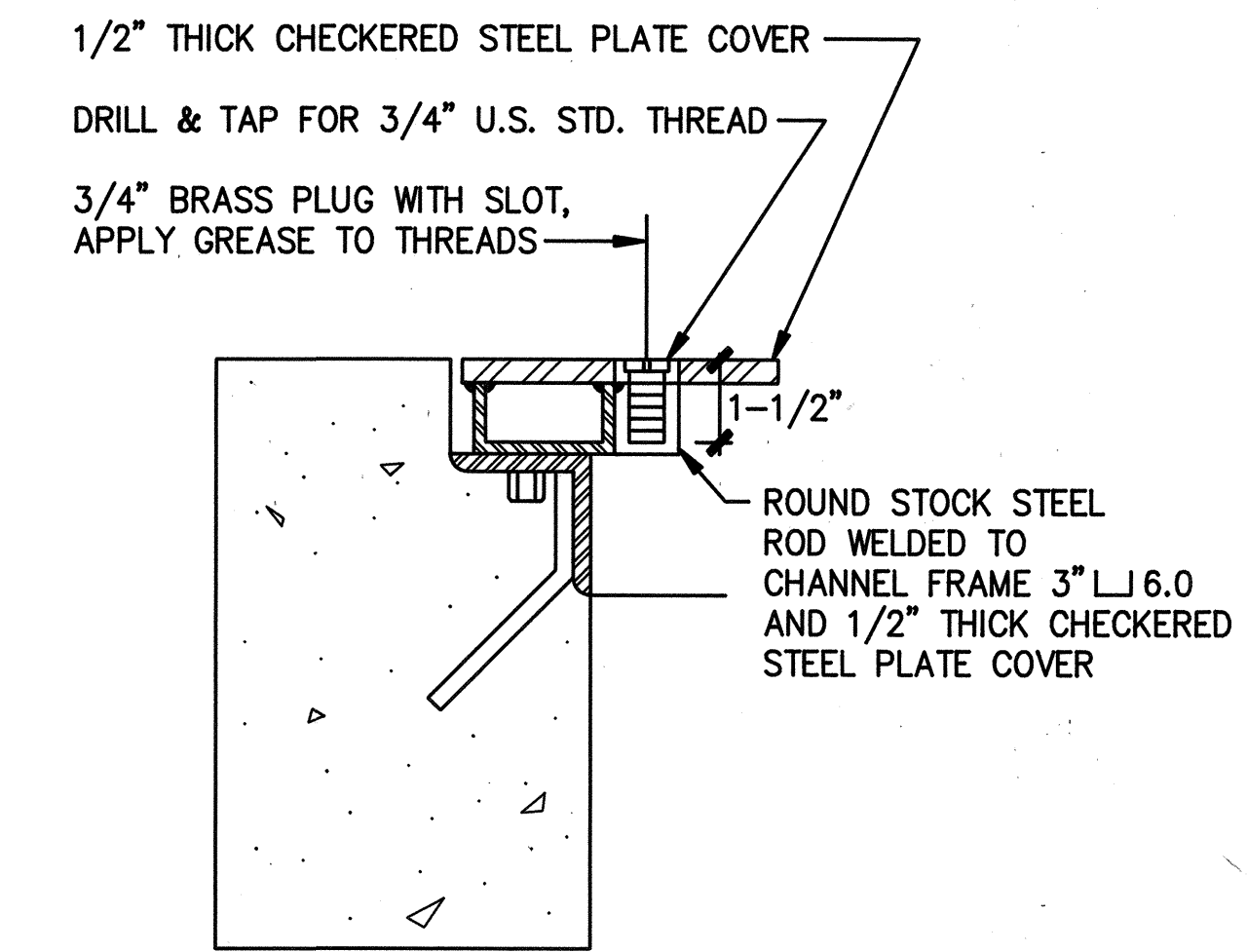
FED. ROAD DIST. NO.	STATE	FED. AID PROJ. NO.	FISCAL YEAR	SHEET NO.	TOTAL SHEETS
HAWAII	HAW.	63A-02-90	1991	10	13



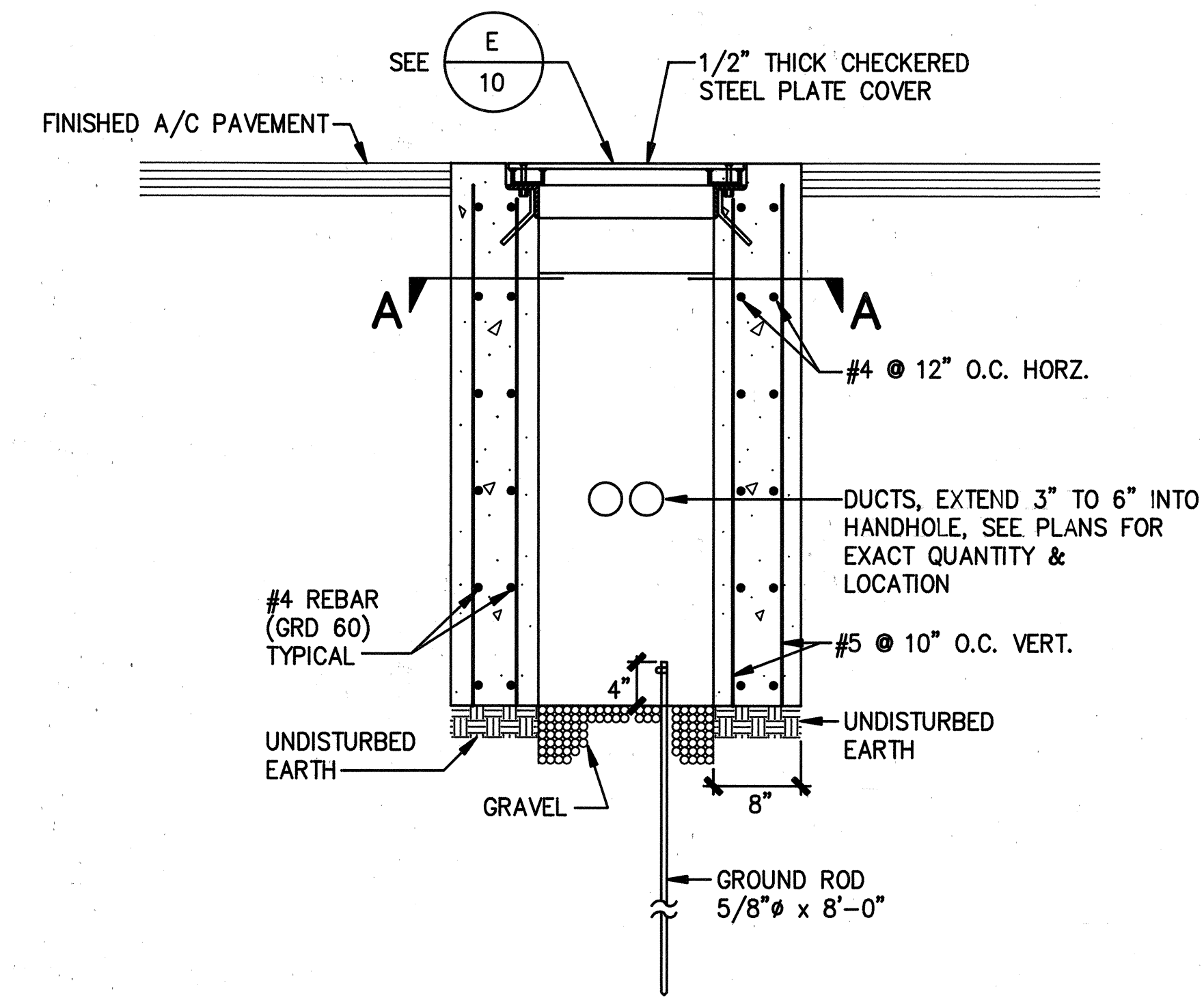
A SECTION "A-A"
10 NOT TO SCALE



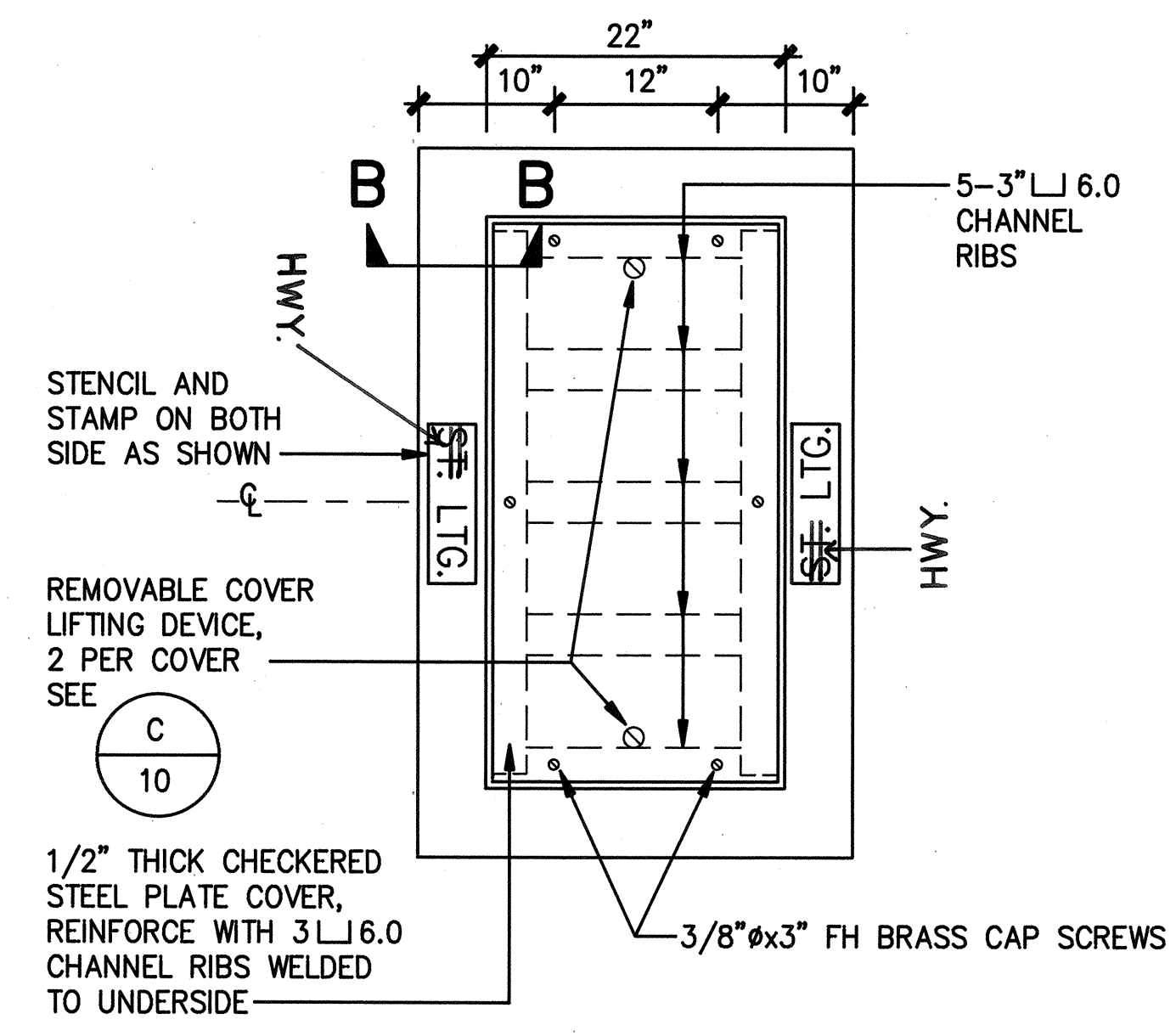
B SECTION "B-B"
10 NOT TO SCALE



C REMOVABLE COVER LIFTING DEVICE DETAIL
10 NOT TO SCALE

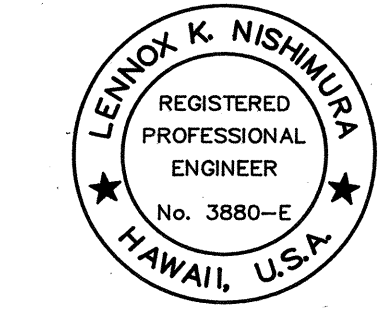


D SECTION AT NEW ELECTRIC HANDHOLE
10 NOT TO SCALE



E ELECTRIC HANDHOLE PLAN
10 NOT TO SCALE

- NOTES:**
1. FINISHED STEEL WORK (ANGLE IRON FRAME, CHANNELS, 1/2" STEEL PLATE COVER) SHALL BE HOT DIPPED GALVANIZED AFTER FABRICATION.



This work was prepared by me or under my supervision
EGS INC.
By *Lemox K. Nishimura*
Its **PROJECT ENGINEER**
Date **SEPT. 26, 1990**

STATE OF HAWAII
DEPARTMENT OF TRANSPORTATION
HIGHWAYS DIVISION

HANDHOLE DETAILS

LIKELIKE HIGHWAY -- HIGHWAY LIGHTS
WILSON TUNNEL TO VALLEY VIEW ROAD
PROJECT NO. 63A-02-90

SCALE: NOT TO SCALE DATE:

SHEET No. 10 OF 13 SHEETS