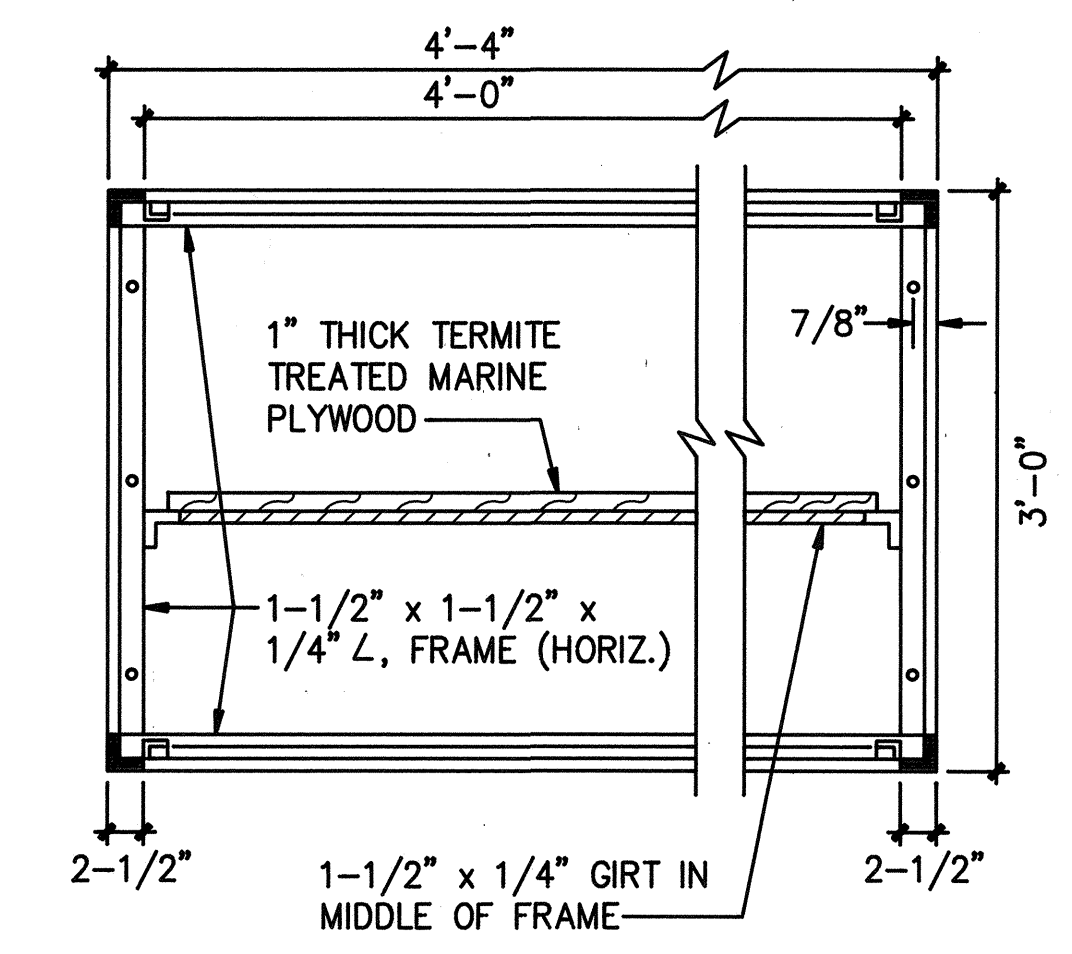
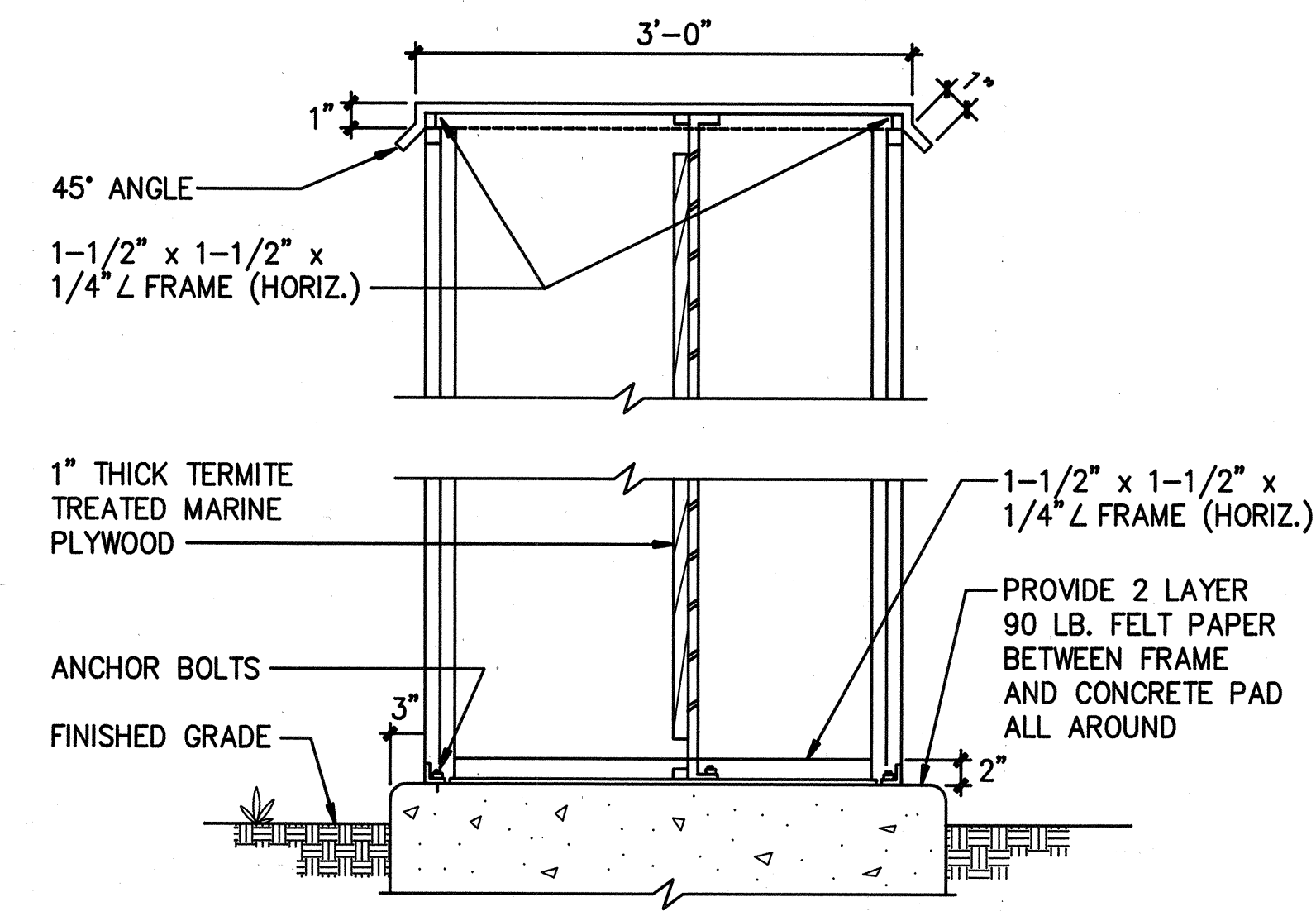
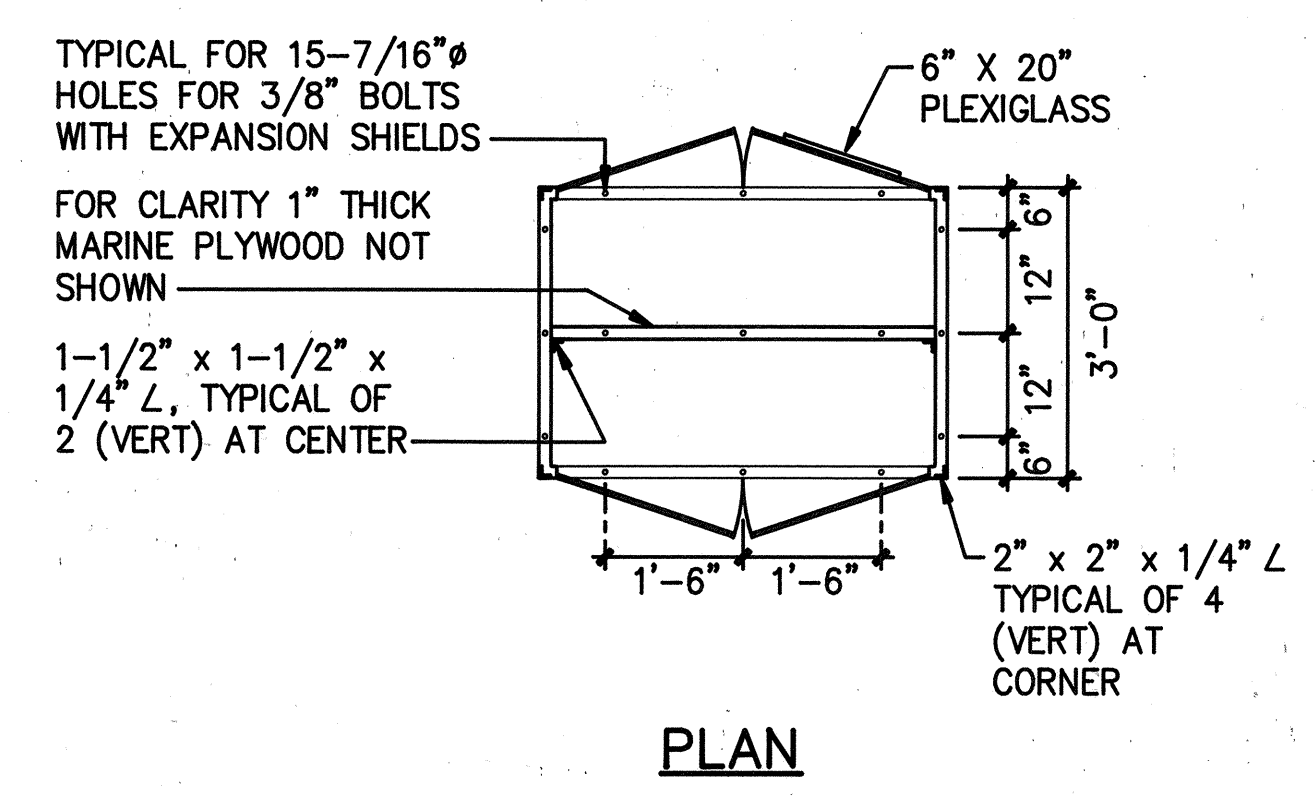
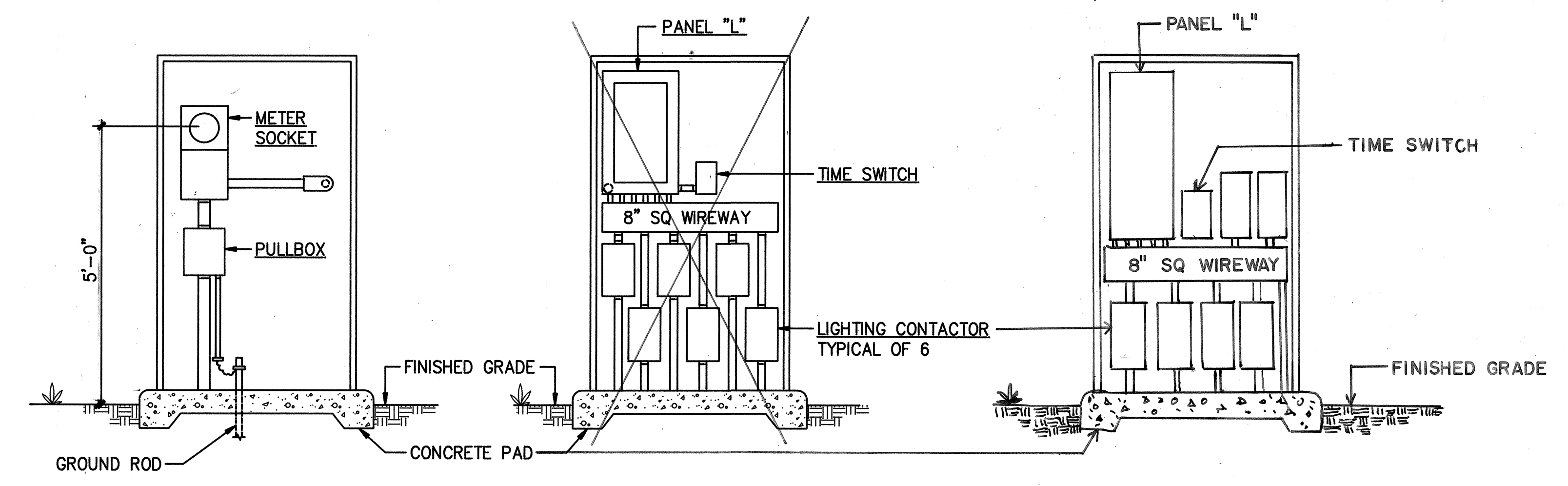
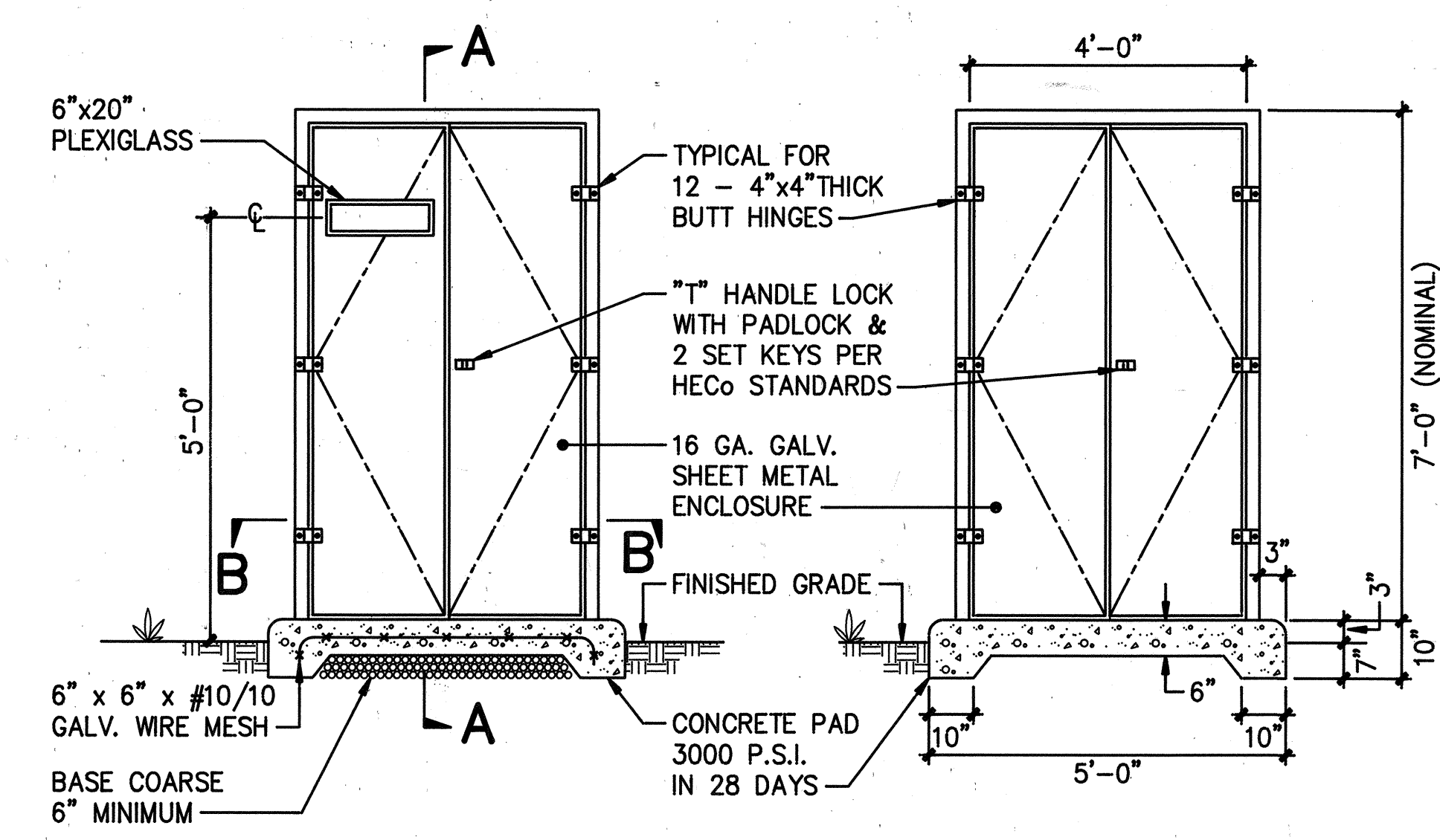


FED. ROAD DIST. NO.	STATE	FED. AID PROJ. NO.	FISCAL YEAR	SHEET NO.	TOTAL SHEETS
HAWAII	HAW.	63A-02-90	1991	13	13

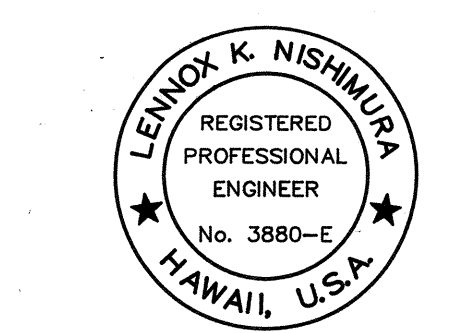


- NOTES:**
1. PAINT ENCLOSURE INSIDE AND OUTSIDE WITH MARINE GREEN EPOXY ENAMEL.
 2. PROVIDE SHOP DRAWINGS PRIOR TO FABRICATION.
 3. GALVANIZED ANGLE BRACKET PVC PAINT FINISH.



A ELECTRICAL SERVICE EQUIPMENT ENCLOSURE

13 NOT TO SCALE



This work was prepared by me or under my supervision

EQS INC.

By *Lennox K. Nishimura*

Its **PROJECT ENGINEER**

Date **SEPT. 28, 1990**

STATE OF HAWAII
DEPARTMENT OF TRANSPORTATION
HIGHWAYS DIVISION

ELECTRICAL SERVICE EQUIPMENT ENCLOSURE

LIKELIKE HIGHWAY - HIGHWAY LIGHTS
WILSON TUNNEL TO VALLEY VIEW DRIVE
PROJECT NO. 63A-02-90

SCALE: NO SCALE DATE:

SHEET No. 13 OF 13 SHEETS

ORIGINAL PLAN	DATE
DRAWN BY	
DESIGNED BY	
QUANTITIES BY	
CHECKED BY	