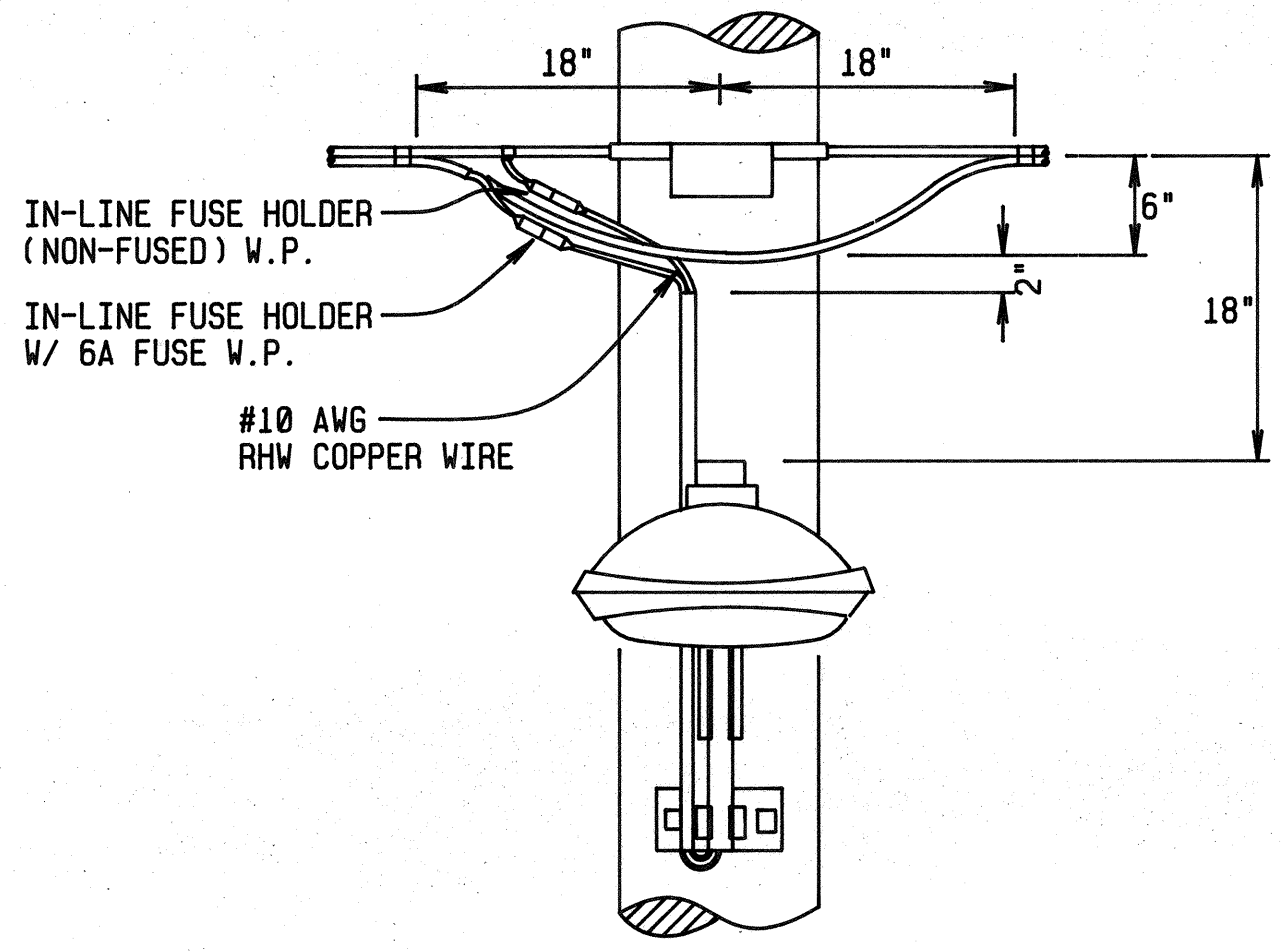
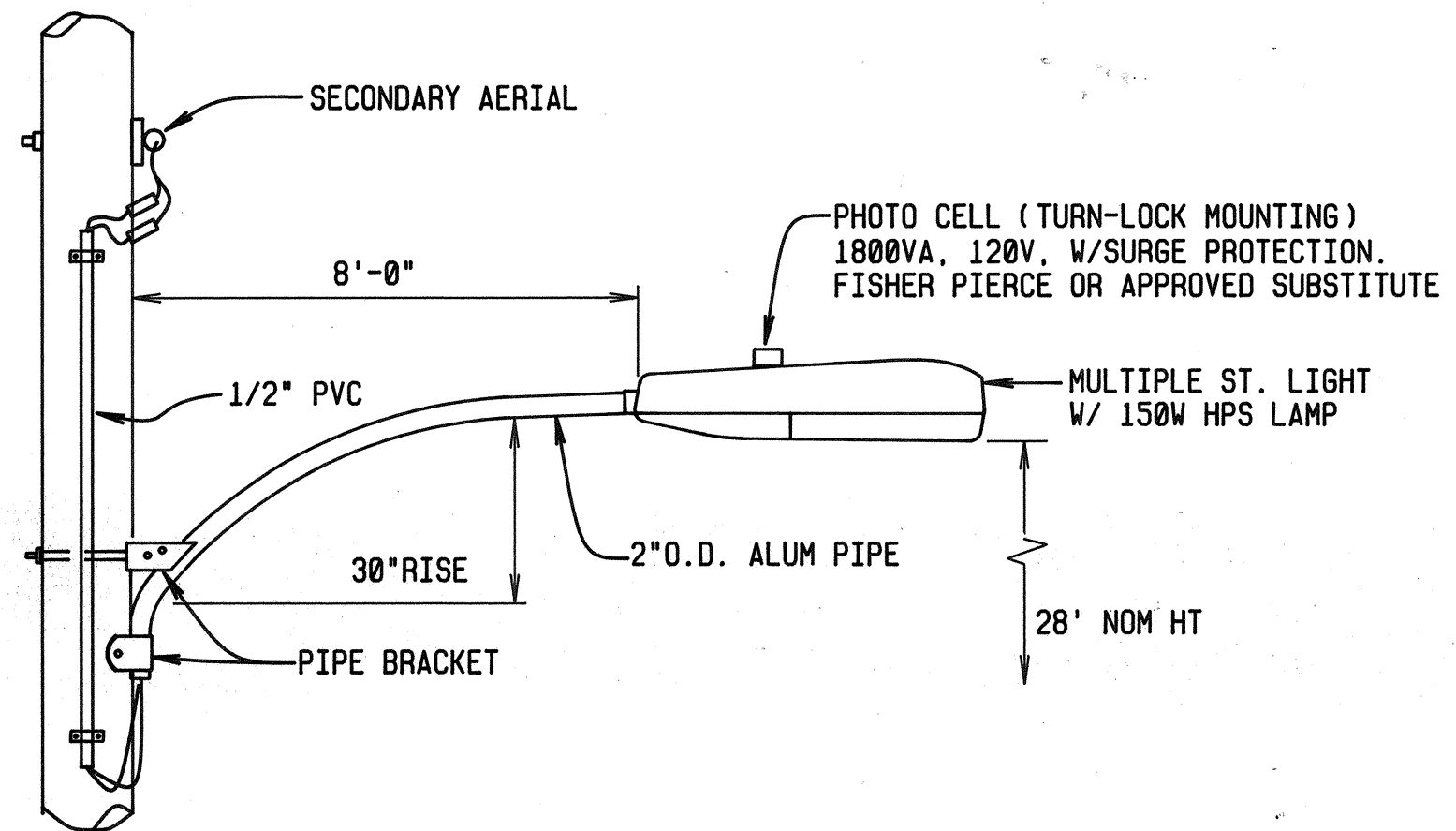


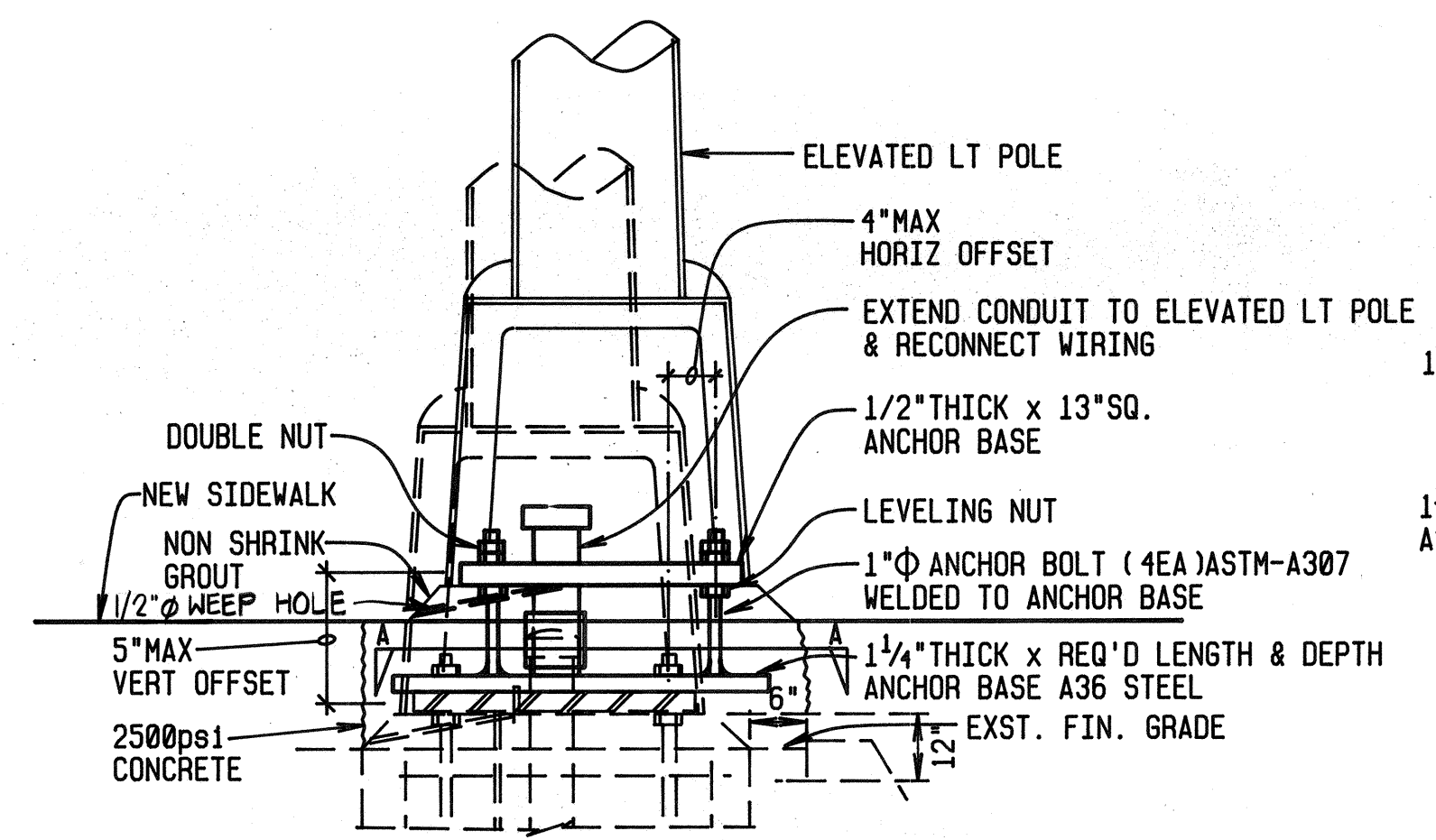
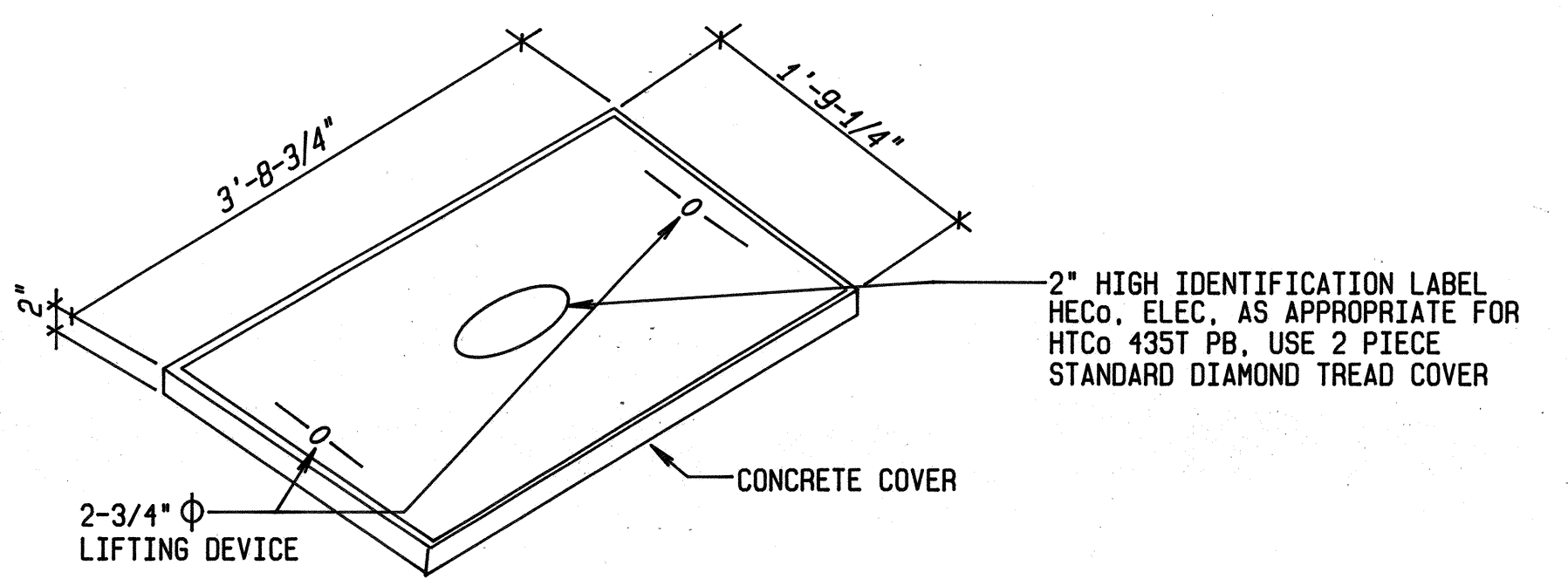
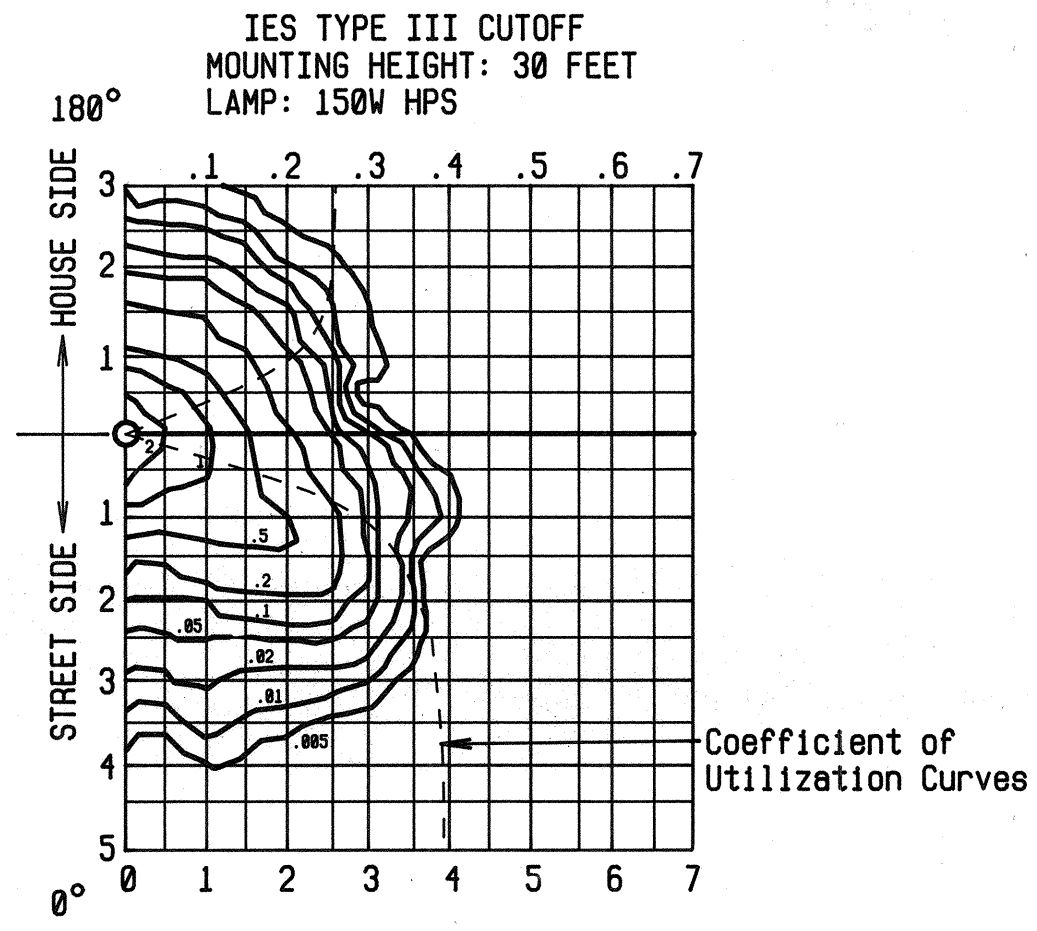
FED. ROAD DIST. NO.	STATE	PROJ. NO.	FISCAL YEAR	SHEET NO.	TOTAL SHEETS
HAWAII	HAW.	63A-02-89	1991	20	23



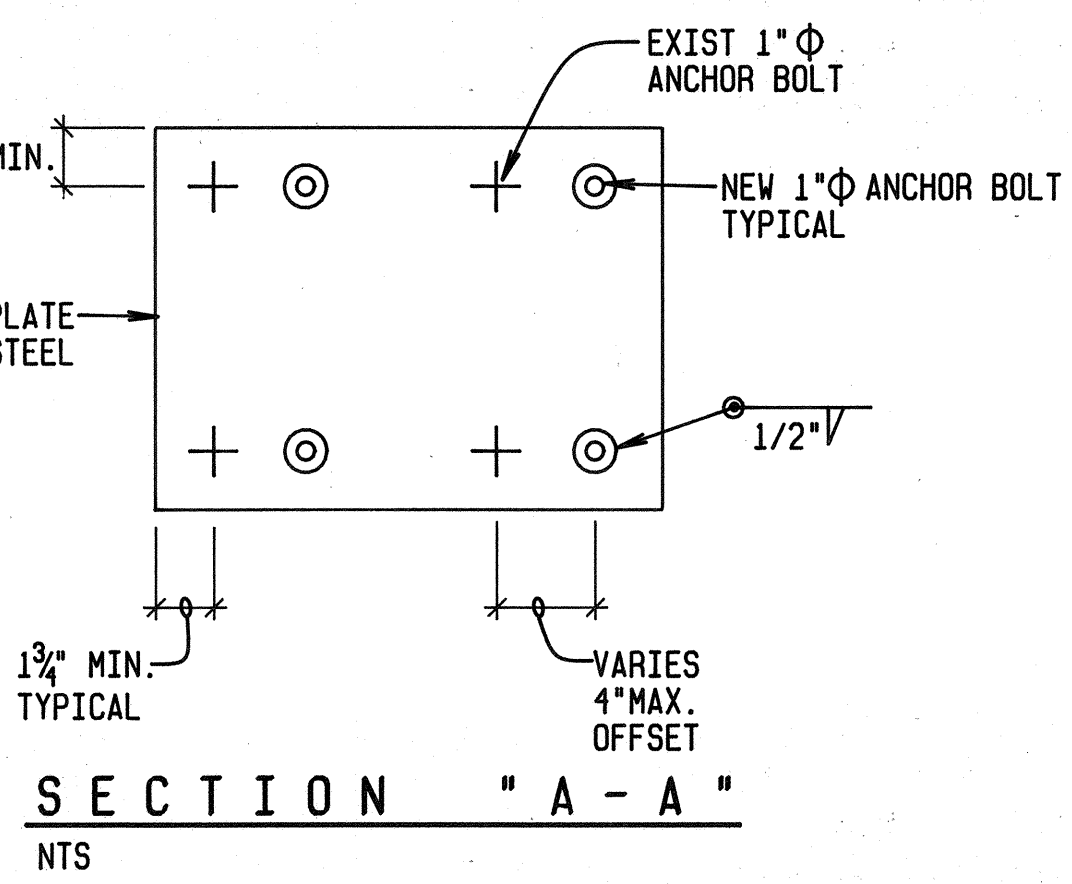
**A** STREET LIGHT MOUNTING DETAIL  
20 NOT TO SCALE 98064-8L



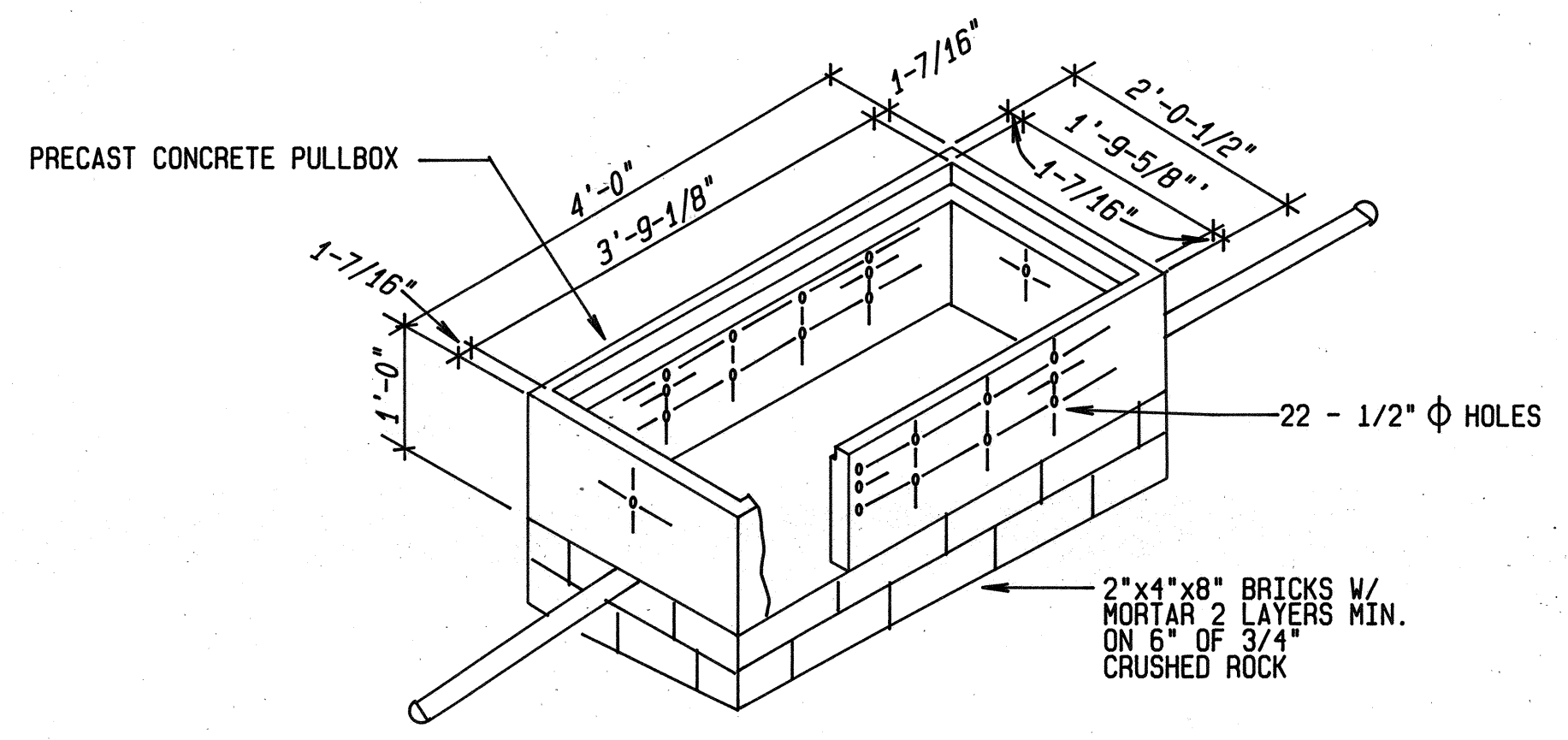
**C** PHOTOMETRIC CHARACTERISTICS FOR STREET LTG FIXTURE  
20 NOT TO SCALE 98064-PM1



**E** STREET LIGHT INSTALLATION DETAIL  
20 NOT TO SCALE 98064-SL1



**F** PULLBOX HEIGHT ADJUSTMENT DETAIL  
20 NOT TO SCALE 98064-PD2



**G** NEW 2' x 4' PULLBOX DETAIL  
20 NOT TO SCALE 98064-PD1

**HTC NOTES**

1. The Contractor shall exercise extreme caution when the excavation and construction crosses or is in close proximity of underground telephone and signal cable facilities and shall maintain adequate clearance for clearance for his equipment while working close to and/or under aerial facilities.
2. The Contractor shall be liable for all damages to existing HTC underground and aerial facilities.
3. The Contractor shall report any damages to existing facilities to HTC's Repair Service at 611.
4. The Contractor must obtain an excavation permit from HTC's Outside Plant Permit Section located at 3239 Ualena a minimum of three working days prior to start of excavation.
5. Should field conditions and construction procedures require that any existing HTC underground or aerial facilities be relocated, the work shall be done by HTC and paid for by the Contractor. The Contractor shall be responsible for all coordination.
6. Should it become necessary for existing utility poles be braced, the Contractor shall contact HTC's Outside Plant Support Center at 834-6258, a minimum of three working days prior to actual required bracing.

**HECO NOTES**

**Location of HECO Facilities**

The location of HECO's overhead and underground facilities shown on the plans are from existing records with varying degrees of accuracy and are not guaranteed as shown. The Contractor shall exercise extreme caution whenever construction crosses or is in close proximity of underground lines and shall maintain adequate clearance when operating equipment within or under any overhead lines.

**Compliance with DOSH**

The Contractor shall comply with the State of Hawaii's Occupational Safety and Health Law (DOSH).

**Excavation Permit**

The Contractor shall obtain an excavation permit from HECO's Mapping and Records Division located at 820 Ward Avenue, 4th floor, two weeks prior to starting construction. Please refer to our HECO request number at that time.

**Underground Lines**

For verification of underground lines or for assistance in supporting and protecting these lines, the Contractor shall call HECO's Underground Division at 543-7345 a minimum of 72 hours in advance.

**Excavations**

When trench excavation is adjacent to or beneath our existing structures or facilities, the Contractor is responsible for:

- a) Sheeting and bracing the excavation to prevent slides, cave-ins and settlements.
- b) Protecting existing structures of facilities with beams, struts, or under-pinning.

**Pole Bracing**

For pole bracing instructions, the Contractor shall call the HECO District Construction Superintendent at Ward, phone 543-7050 a minimum of 72 hours in advance.

**Relocation of HECO Facilities**

Any work required to relocate HECO facilities shall be done by HECO and the Contractor shall be responsible for all coordination, and for cost if applicable.

**Temporary Relocation of HECO Facilities**

Should it become necessary to temporarily relocate any HECO facilities to enable the contractor to perform his work in a safe and expeditious manner in fulfilling his contract obligations, these temporary relocations will be done by HECO, or by the contractor under HECO's supervision, with all costs being borne by the contractor.

**Damage to HECO Facilities**

Any damage to HECO's facilities will be reported immediately to HECO's Trouble Dispatcher at Ph. 543-7874.

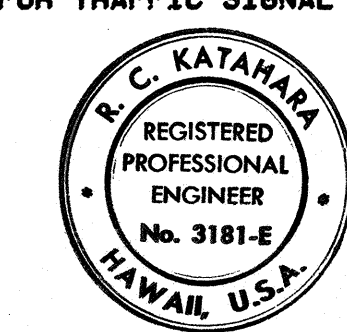
**Liability for Damages**

All HECO overhead and underground facilities shown on these plans or whose approximate locations within the project boundaries have been made known by any reasonable means at any time to the Contractor shall be protected at all times by the Contractor during construction. This repair work shall be done by HECO, or by the Contractor under HECO's supervision.

**APPROVED:**

AS *Roy M. Hiyama* for SE 12/24/90  
HAWAIIAN ELECTRIC CO. DATE

for *Kenneth L. Young* 11/15/90  
C & C DEPARTMENT OF TRANSPORTATION SERVICES (FOR TRAFFIC SIGNAL WORK ONLY) DATE



THIS WORK WAS PREPARED BY ME OR UNDER MY SUPERVISION. *R.C. KATAHARA* 11/22/90  
MK ENGINEERS, LTD.

STATE OF HAWAII  
DEPARTMENT OF TRANSPORTATION  
HIGHWAYS DIVISION

**MISCELLANEOUS DETAILS, NOTES**

KALIHI STREET IMPROVEMENTS  
NIMITZ HWY TO DILLINGHAM BLVD  
PROJECT NO. 63A-02-89

SCALE: AS NOTED  
SHEET No. 1 OF 1 SHEETS

DATE	12/24/90
SURVEY PLOTTED BY	
DRAWN BY	
DESIGNED BY	
QUANTITIES BY	
CHECKED BY	
ORIGINAL PLAN	
NOTE BOOK	
NO.	

**H** POLE RISER DETAIL  
20 NTS 98064-PR0

