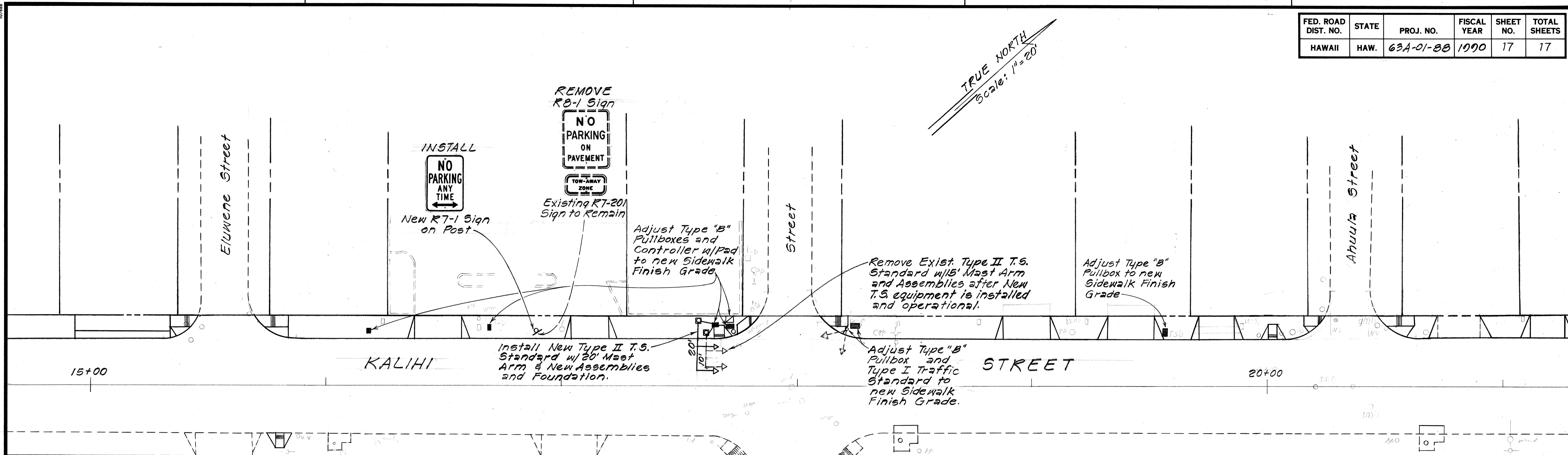


FED. ROAD DIST. NO.	STATE	PROJ. NO.	FISCAL YEAR	SHEET NO.	TOTAL SHEETS
HAWAII	HAW.	63A-01-88	1990	17	17



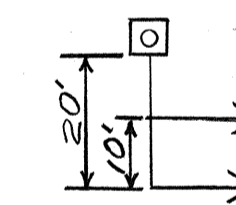
CONSTRUCTION NOTES

- Locations of existing underground structures and utilities such as pipelines, cables, etc. shown on the Roadway Plans are approximate only. It is not the intent of these plans to show the exact location of all underground utilities and structures. It is the responsibility of the Contractor to verify the locations of all existing utilities with the respective owners. Existing utilities damaged by the Contractor shall be repaired by the Contractor at his own cost.
- The locations of Traffic Signal Standards with Mast-Arm, Traffic Controller, Pullboxes, and Conduits shall be staked out in the field by the Contractor and approval of the locations shall be obtained from the Engineer prior to construction & installation.
- All traffic signal work shall conform to the requirements of the "Manual on Uniform Traffic Control Devices for Streets and Highways", Federal Highway Administration (1988) and Amendments.
- Maintenance of traffic through the construction area shall be in accordance with Part VI of the "Manual on Uniform Control Devices for Streets and Highways", Federal Highway Administration (1988) and as specified in the Special Provisions. The Contractor shall furnish and maintain adequate barricades, blinkers, construction signs, etc., for the safety of the motoring public.
- Department of Transportation Services, City and County of Honolulu, will assist the Engineer in construction inspection for the traffic signal system.
- The existing Traffic Signal Type II Standard w/15' Mast-Arm and Assemblies, and other salvageable material shall be carefully removed and transported to the City and County Traffic Signal Shop, 160 Koula Street.
- The existing Traffic Signal System shall remain operational during construction.

NOTE:

All cost for materials, equipment and labor to adjust the Type "B" Pullboxes, Controller w/Pad and Type I Traffic Standard shall be incidental to other Traffic Signal items.

LEGEND



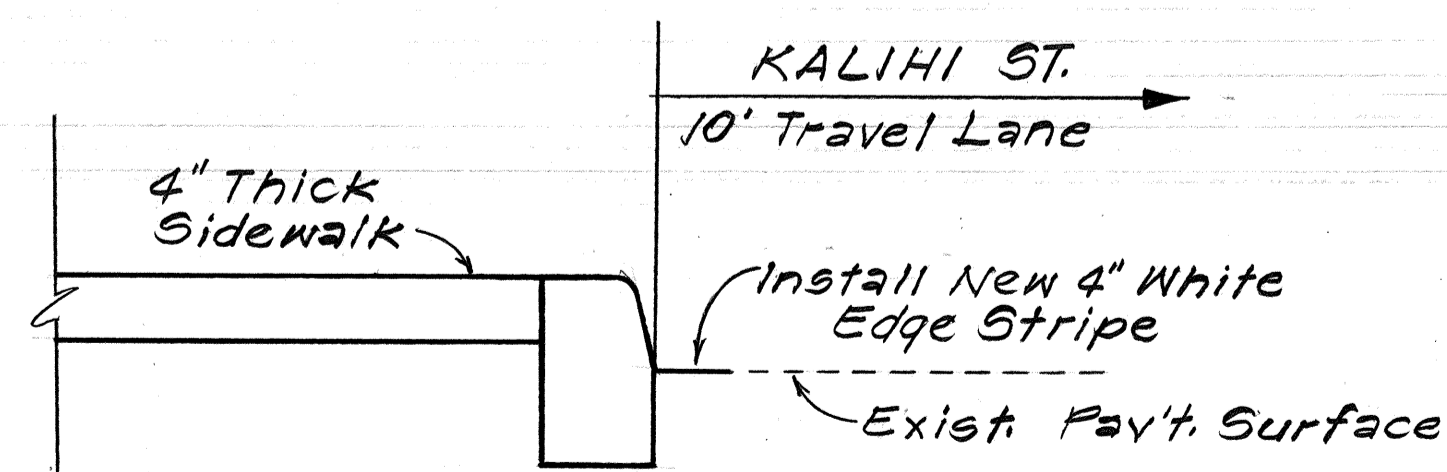
TRAFFIC SIGNAL HEADS MOUNTED ON TYPE II SIGNAL STANDARD, ARM SPREAD SHOWN IS 20' & DISTANCE BETWEEN SIGNAL HEADS IS 15'



CONTROLLER CABINET w/PAD



TYPE "B" PULLBOX



TYPICAL EDGE STRIPE INSTALLATION

Not to Scale

DATE
SURVEY PLOTTED BY
DRAWN BY
DESIGNED BY
CHECKED BY
NO.

STATE OF HAWAII
DEPARTMENT OF TRANSPORTATION
HIGHWAYS DIVISION

TRAFFIC SIGNAL & SIGNING PLAN

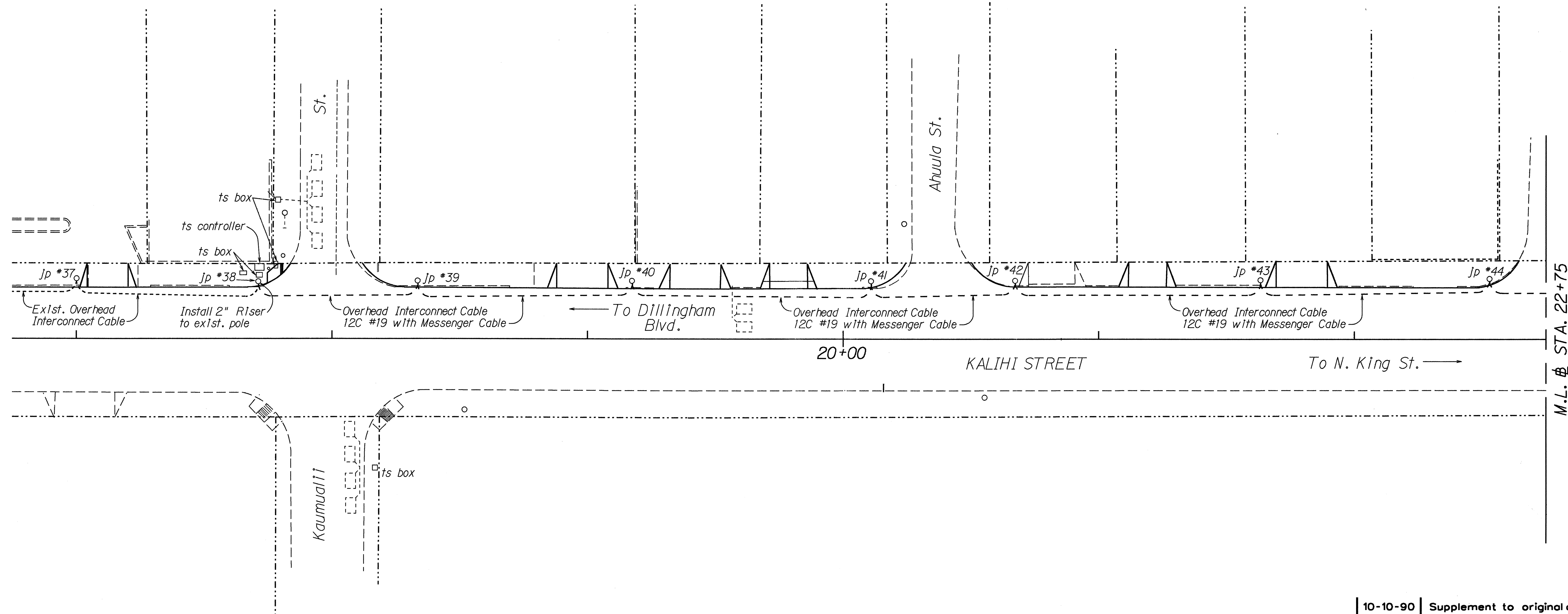
KALIHI STREET IMPROVEMENTS
Dillingham Blvd. to North School St.
PROJECT No. 63A-01-88

Scale: 1" = 20' Date: Oct, 1989

SHEET No. 71 OF 1 SHEETS

FED. ROAD DIST. NO.	STATE	PROJ. NO.	FISCAL YEAR	SHEET NO.	TOTAL SHEETS
HAWAII	HAW.	63A-01-88	1990	175-1	17

TRUE NORTH
SCALE: 1" = 20'

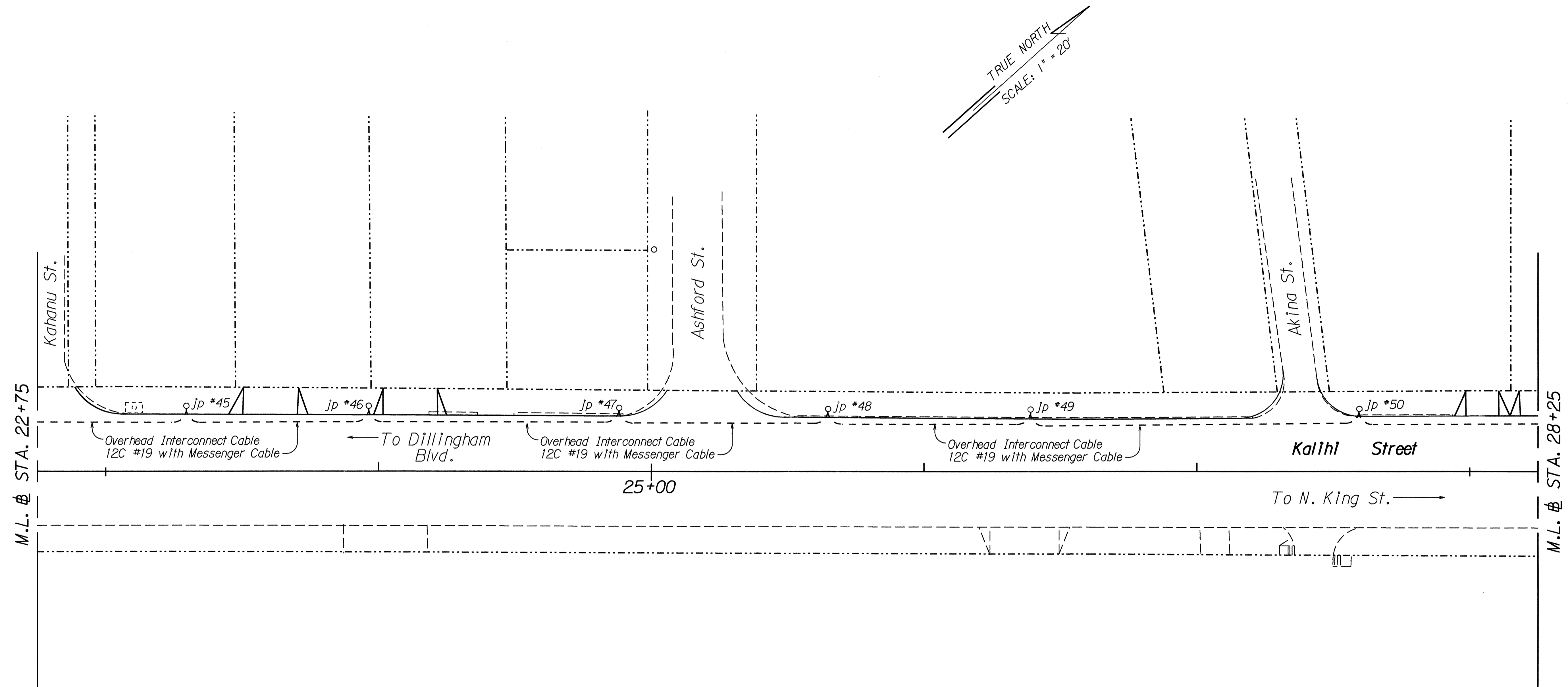


ORIGINAL PLAN	DATE
DRAWN BY	
TRACED BY	
NOTED BY	
QUANTITIES BY	
CHECKED BY	
No.	

10-10-90	Supplement to original contract plans for overhead interconnect cable
DATE	REVISION
STATE OF HAWAII DEPARTMENT OF TRANSPORTATION HIGHWAYS DIVISION	
TRAFFIC SIGNAL	
KALIH STREET IMPROVEMENTS Dillingham Blvd. To North King Street PROJECT NO. 63A-01-88	
Scale: 1"-20'-0"	Date: October 1990
SHEET No. T1-A OF 1 SHEETS	

C.O. 17 S-1

FED. ROAD DIST. NO.	STATE	PROJ. NO.	FISCAL YEAR	SHEET NO.	TOTAL SHEETS
HAWAII	HAW.	63A-01-88	1990	175-2	17

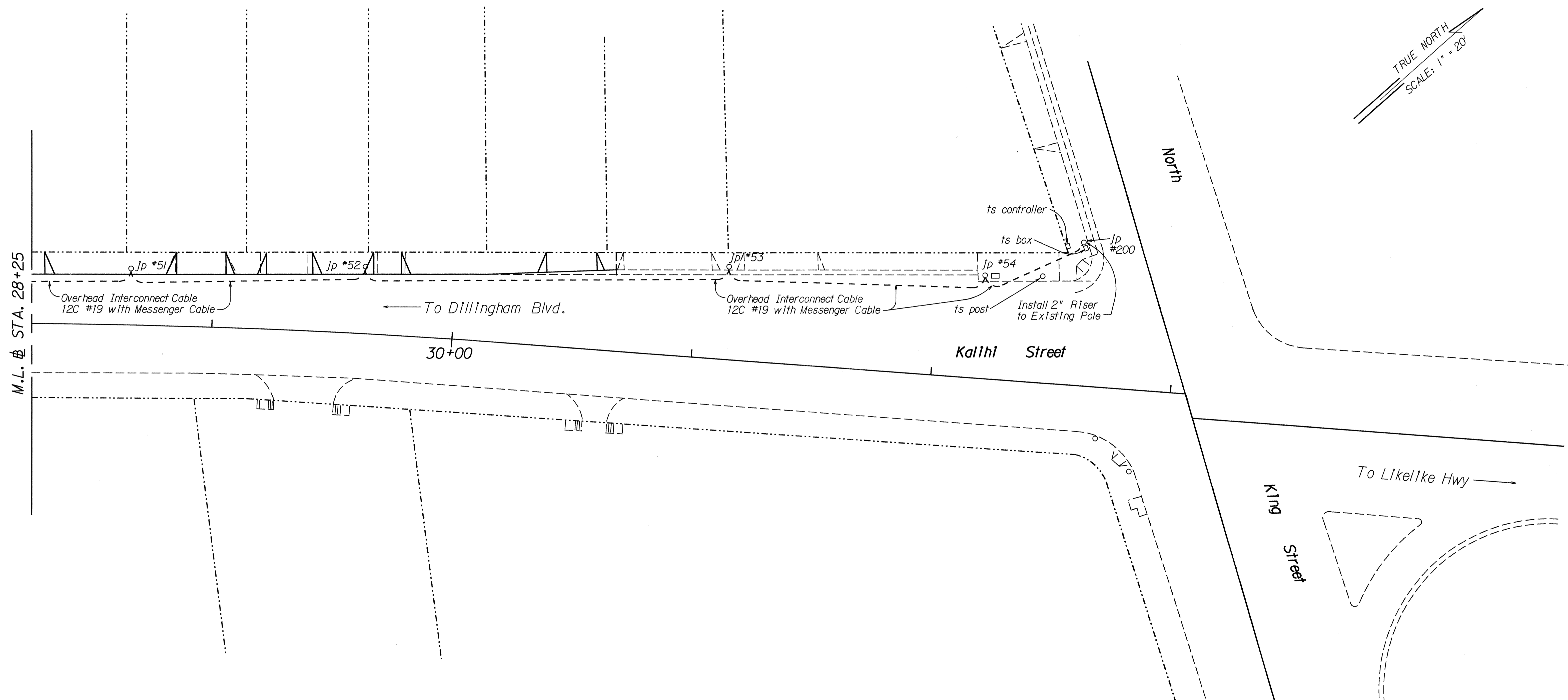


ORIGINAL PLAN	DATE
DRAWN BY	
TRACED BY	
NOTED BY	
CHECKED BY	
NO.	

10-10-90	Supplement to original contract plans for overhead interconnect cable
DATE	REVISION
STATE OF HAWAII DEPARTMENT OF TRANSPORTATION HIGHWAYS DIVISION	
TRAFFIC SIGNAL	
KALIHĪ STREET IMPROVEMENTS	
Dillingham Blvd. To North King Street	
PROJECT NO. 63A-01-88	
Scale: 1"=20'-0"	Date: October 1990
SHEET No.T1-B OF 1 SHEETS	

C.O. 17 S-2

FED. ROAD DIST. NO.	STATE	PROJ. NO.	FISCAL YEAR	SHEET NO.	TOTAL SHEETS
HAWAII	HAW.	63A-01-88	1990	175-3	17



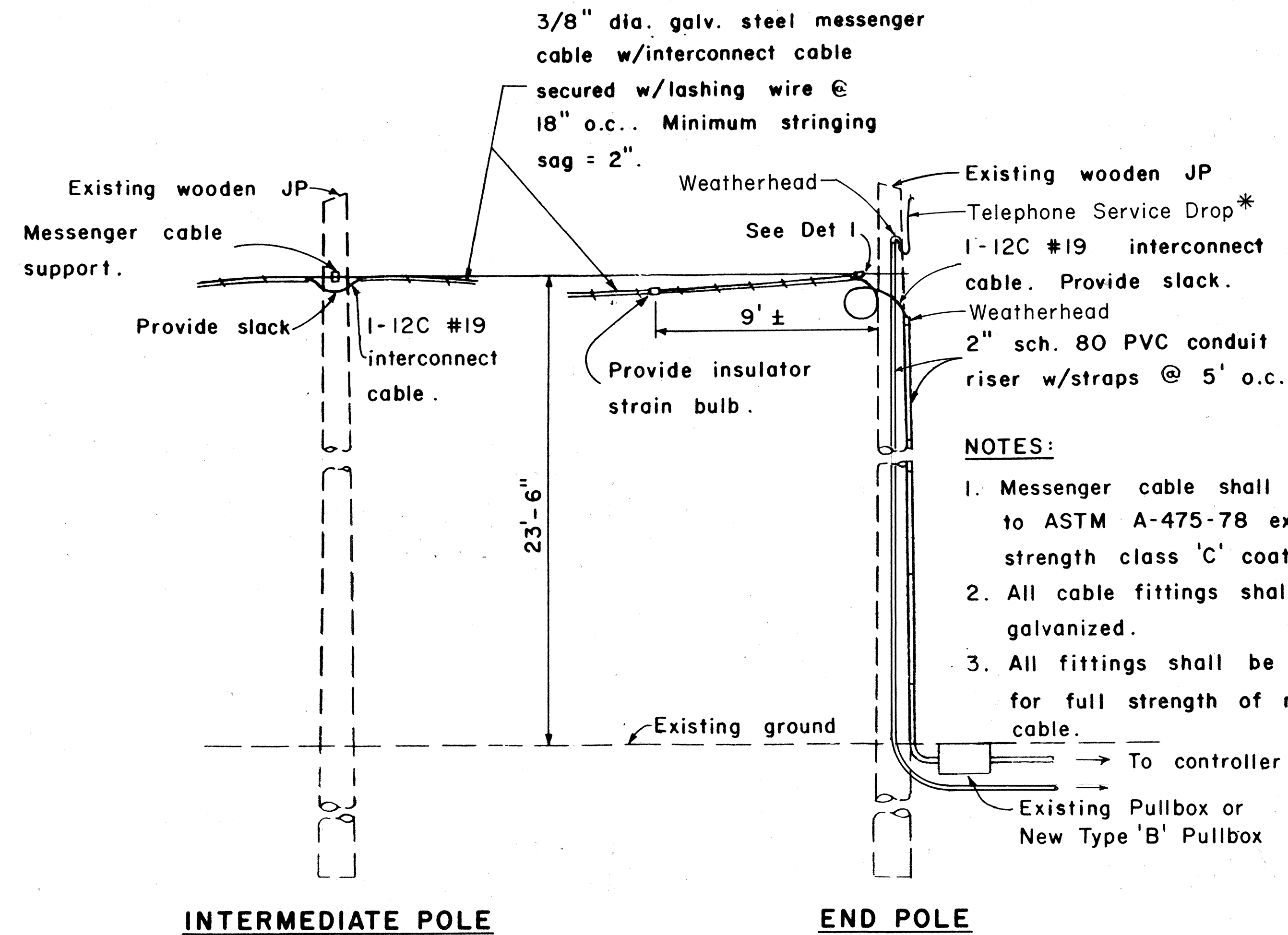
TRUE NORTH
SCALE: 1" = 20'

SURVEY PLOTTED BY	DATE
DRAWN BY	
DESIGNED BY	
QUANTITIES BY	
CHECKED BY	
ORIGINAL PLAN	
NOTE BOOK	
No.	

10-10-90	Supplement to original contract plans for overhead interconnect cable
DATE	REVISION
STATE OF HAWAII DEPARTMENT OF TRANSPORTATION HIGHWAYS DIVISION	
TRAFFIC SIGNAL	
KALIH STREET IMPROVEMENTS	
Dillingham Blvd. To North King Street	
PROJECT NO. 63A-01-88	
Scale: 1"=20'-0"	Date: October 1990
SHEET No.T1-C OF 1 SHEETS	

C.O. 17 S-3

FED. ROAD DIST. NO.	STATE	PROJ. NO.	FISCAL YEAR	SHEET NO.	TOTAL SHEETS
HAWAII	HAW.	63A-01-BB	1990	17.5-4	17

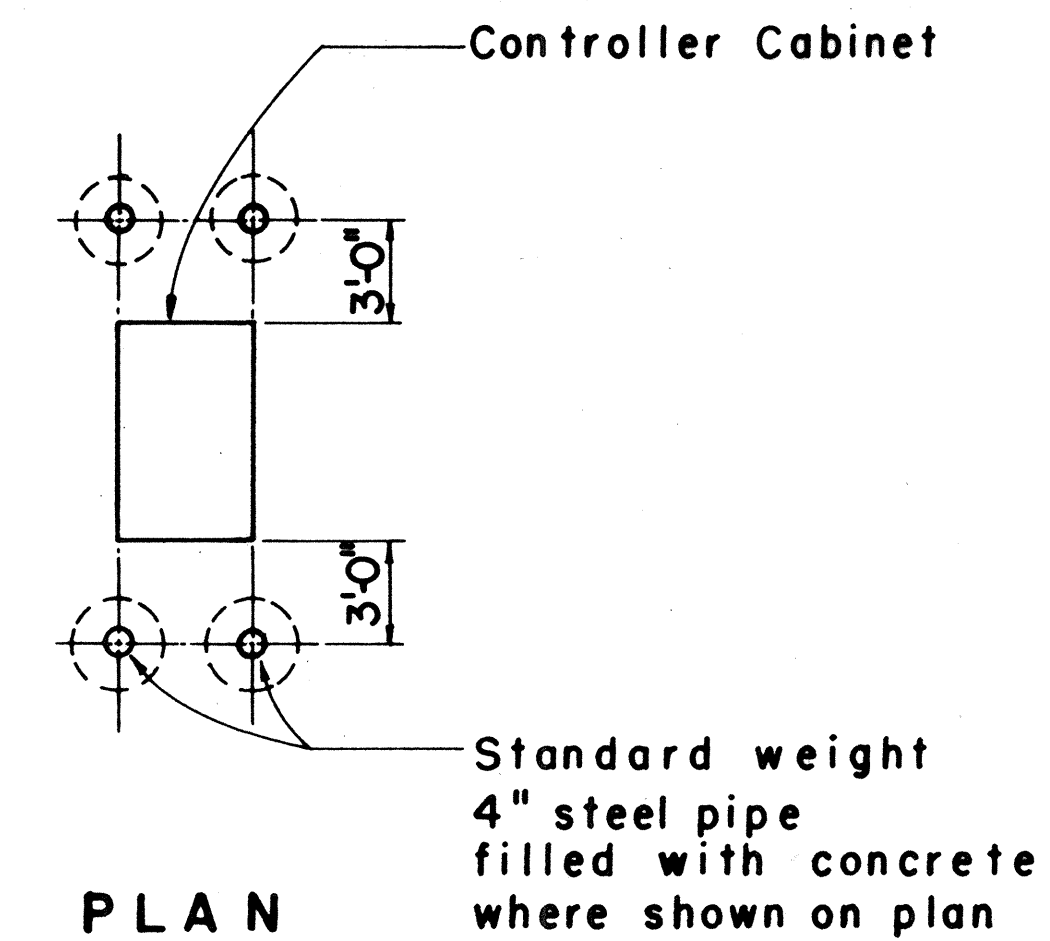


- NOTES:**
1. Messenger cable shall conform to ASTM A-475-78 extra high strength class 'C' coating.
 2. All cable fittings shall be galvanized.
 3. All fittings shall be designed for full strength of messenger cable.

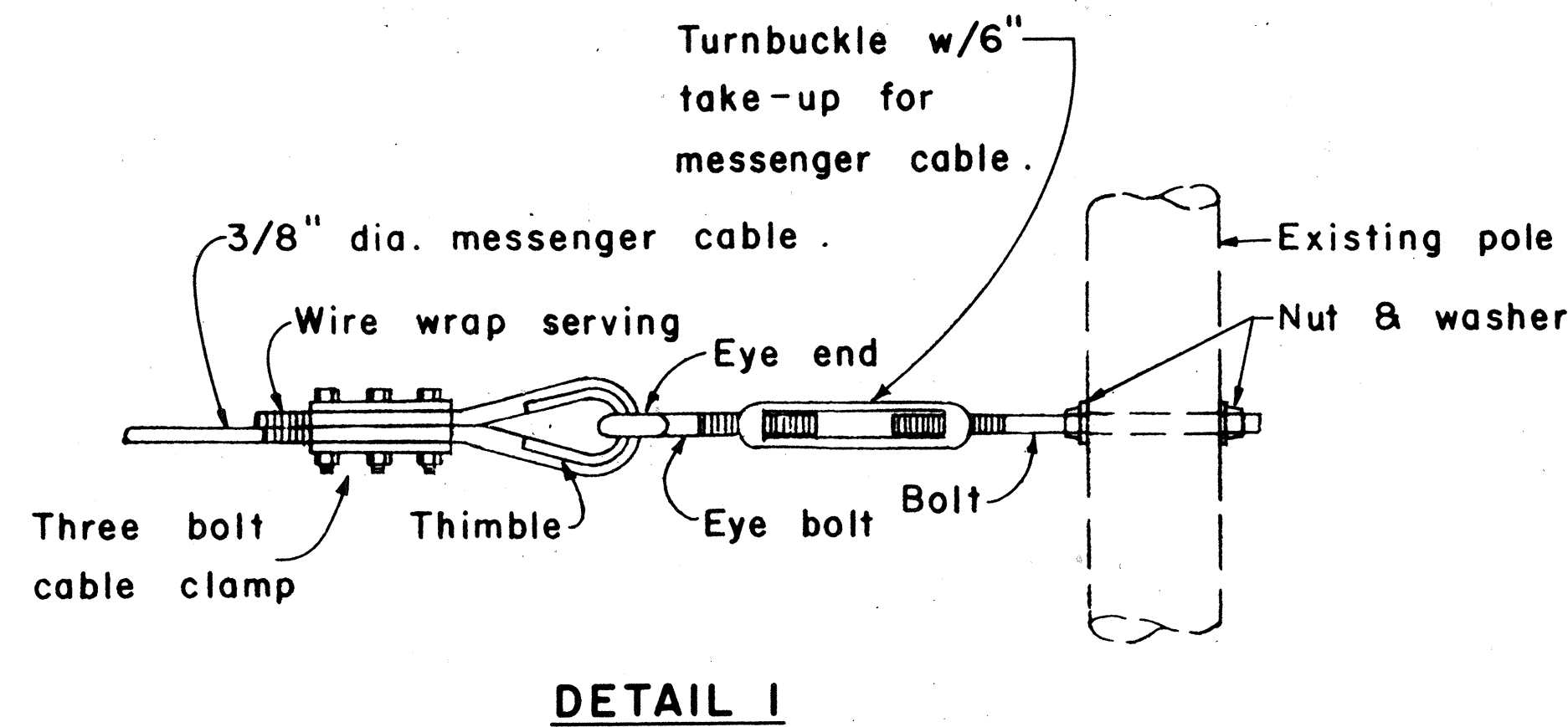
* The Contractor shall arrange for telephone service to the controller cabinet at the locations shown on the plans and in accordance with the requirements of GTE Hawaiian Telephone. The contract price paid for telephone service shall include costs for furnishing and installing 2" conduits, riser and any installation charges by GTE Hawaiian Tel.

NOTE:

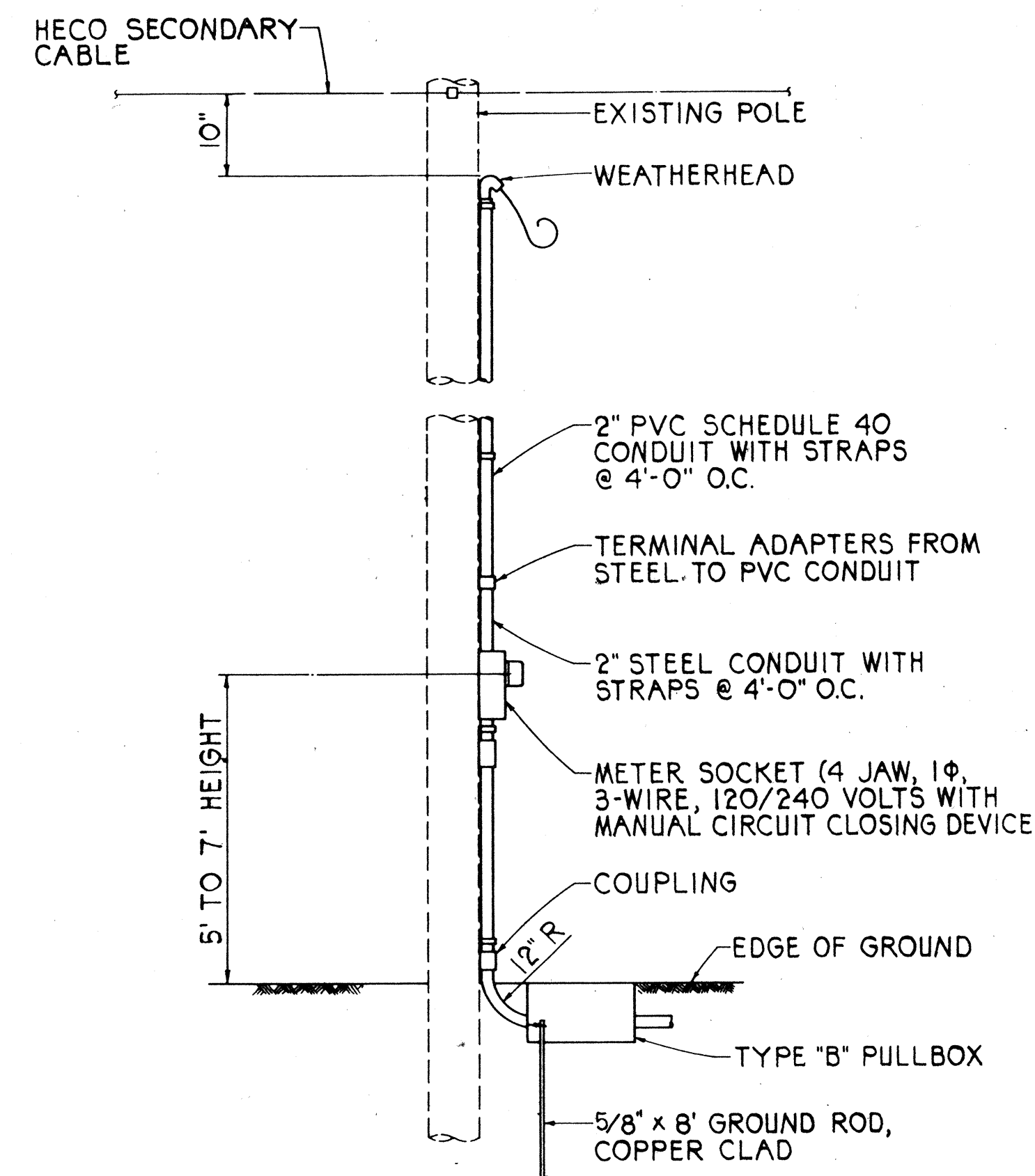
Cost of concrete filled galvanized posts shall be incidental to other items of work.



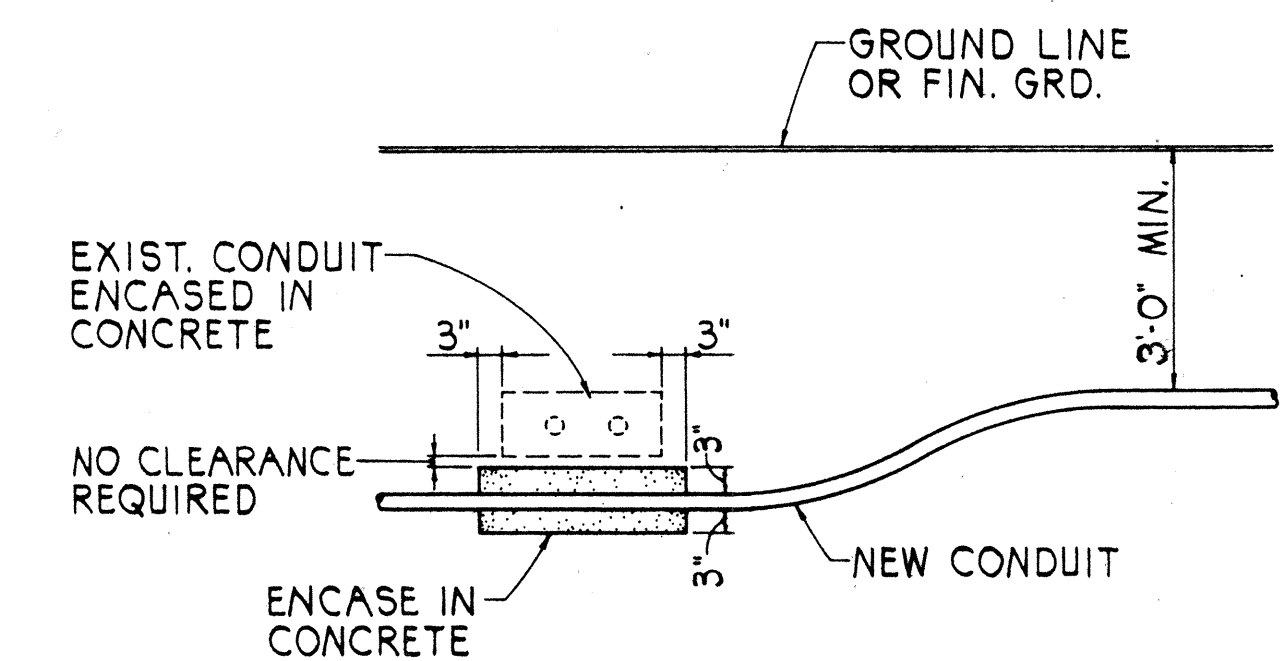
PIPE GUARD DETAIL
NOT TO SCALE



TYPICAL OVERHEAD INSTALLATION
NOT TO SCALE



SERVICE POLE DETAIL
NOT TO SCALE



CONDUIT BY-PASS DETAIL
NOT TO SCALE

10-3-90	Overhead Interconnect Cable Details to supplement original contract plans.
DATE	REVISION
STATE OF HAWAII DEPARTMENT OF TRANSPORTATION HIGHWAYS DIVISION	
MISCELLANEOUS DETAILS	
KALIHI STREET IMPROVEMENTS Dillingham Blvd. to North King Street PROJECT No. 63A-01-BB	
Scale: As shown	Date: Oct. 1990
SHEET No. 17-DOF 1 SHEETS	

DATE	_____
DESIGNED BY	_____
CHECKED BY	_____
NO.	_____