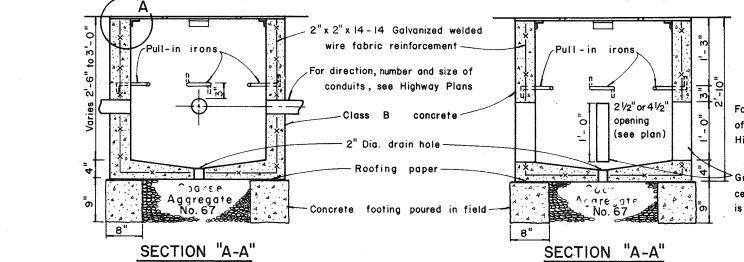
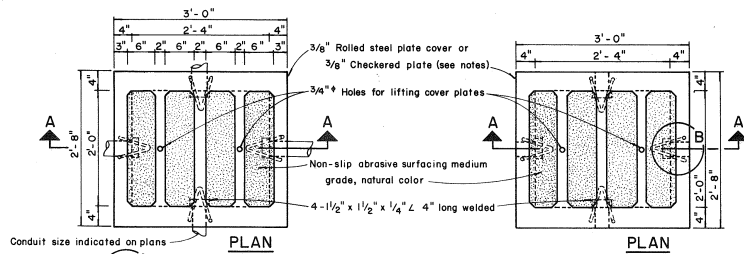


FED. ROAD DIST. NO.	STATE	PROJ. NO.	FISCAL YEAR	SHEET NO.	TOTAL SHEETS
	HAWAII	CS-3-01-72 UNIT II	1978	7	7

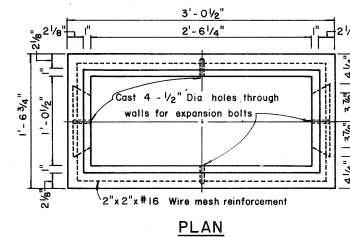


TYPE "A" PULLBOX CAST-IN-PLACE

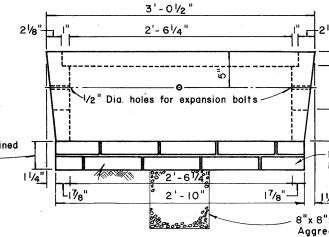
Scale: 1" = 1'-0"

TYPE "A" PULLBOX PRECAST

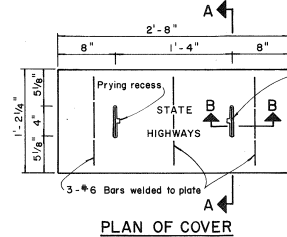
Scale: 1" = 1'-0"



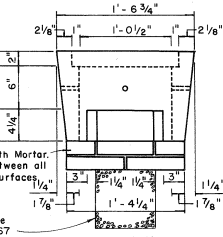
PLAN



SIDE ELEVATION



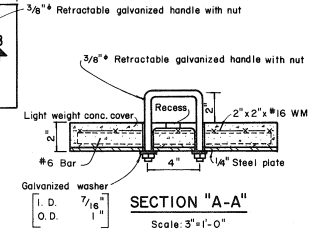
PLAN OF COVER



END ELEVATION

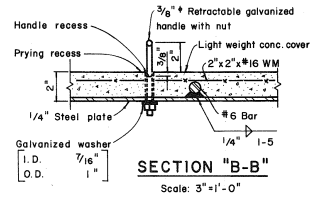
TYPE "C" PULLBOX

Scale: 1 1/2" = 1'-0"



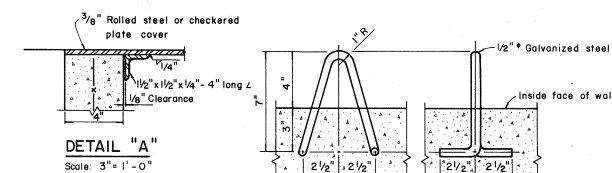
SECTION "A-A"

Scale: 3" = 1'-0"



SECTION "B-B"

Scale: 3" = 1'-0"



DETAIL "A"

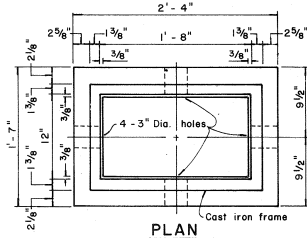
Scale: 3" = 1'-0"

PULL-IN IRON DETAIL "B"

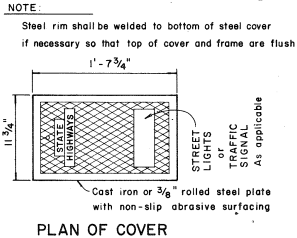
Scale: 3" = 1'-0"

NOTES: (FOR TYPE "A" PULLBOX)

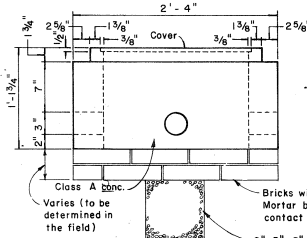
1. 3/8" Rolled steel plate cover with non-slip abrasive surfacing medium grade, natural color shall be used on all pullboxes located on sidewalk areas where pedestrians are walking.
2. 3/8" Checkered plate cover shall be used on all pullboxes located in median areas and other locations where there are no pedestrians walking.
3. Pull irons shall be placed opposite each conduit slot.
4. Covers on all pullboxes located in sidewalk areas shall be set flush with the concrete sidewalk.
5. Each pullbox shall have a pair of pull irons opposite each other for lifting purposes.



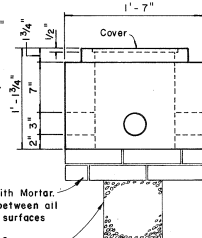
PLAN



PLAN OF COVER



SIDE ELEVATION



END ELEVATION

TYPE "B" PULLBOX

Scale: 1 1/2" = 1'-0"

NOTE:
Steel rim shall be welded to bottom of steel cover if necessary so that top of cover and frame are flush.

1' - 7 3/4"

1' - 7 3/4"

1' - 7 3/4"

1' - 7 3/4"

1' - 7 3/4"

1' - 7 3/4"

1' - 7 3/4"

1' - 7 3/4"

1' - 7 3/4"

1' - 7 3/4"

1' - 7 3/4"

1' - 7 3/4"

1' - 7 3/4"

1' - 7 3/4"

1' - 7 3/4"

1' - 7 3/4"

1' - 7 3/4"

1' - 7 3/4"

1' - 7 3/4"

1' - 7 3/4"

1' - 7 3/4"

1' - 7 3/4"

1' - 7 3/4"

1' - 7 3/4"

1' - 7 3/4"

1' - 7 3/4"

1' - 7 3/4"

1' - 7 3/4"

1' - 7 3/4"

1' - 7 3/4"

1' - 7 3/4"

1' - 7 3/4"

1' - 7 3/4"

1' - 7 3/4"

1' - 7 3/4"

1' - 7 3/4"

1' - 7 3/4"

1' - 7 3/4"

1' - 7 3/4"

1' - 7 3/4"

1' - 7 3/4"

1' - 7 3/4"

1' - 7 3/4"

1' - 7 3/4"

APPROVAL RECOMMENDED
Traffic Engineer
DATE: 12/6/62

APPROVED
Assistant Chief, Engineering
DATE: 12-29-69

NO.	REVISION	APPROVED BY	DATE
1	Revised Type B & C Pullbox details	H-C	3-6-76

STATE OF HAWAII
DEPARTMENT OF TRANSPORTATION
LAND TRANSPORTATION FACILITIES DIVISION
STANDARD DETAILS
PULLBOXES
Scale as noted Date

SHEET No. 1 OF 1 SHEETS DT 401

DESIGNED BY	DATE
DRAWN BY	
CHECKED BY	
ORIGINAL PLAN	
NOTE BOOK	
CHECKED BY	
DATE	