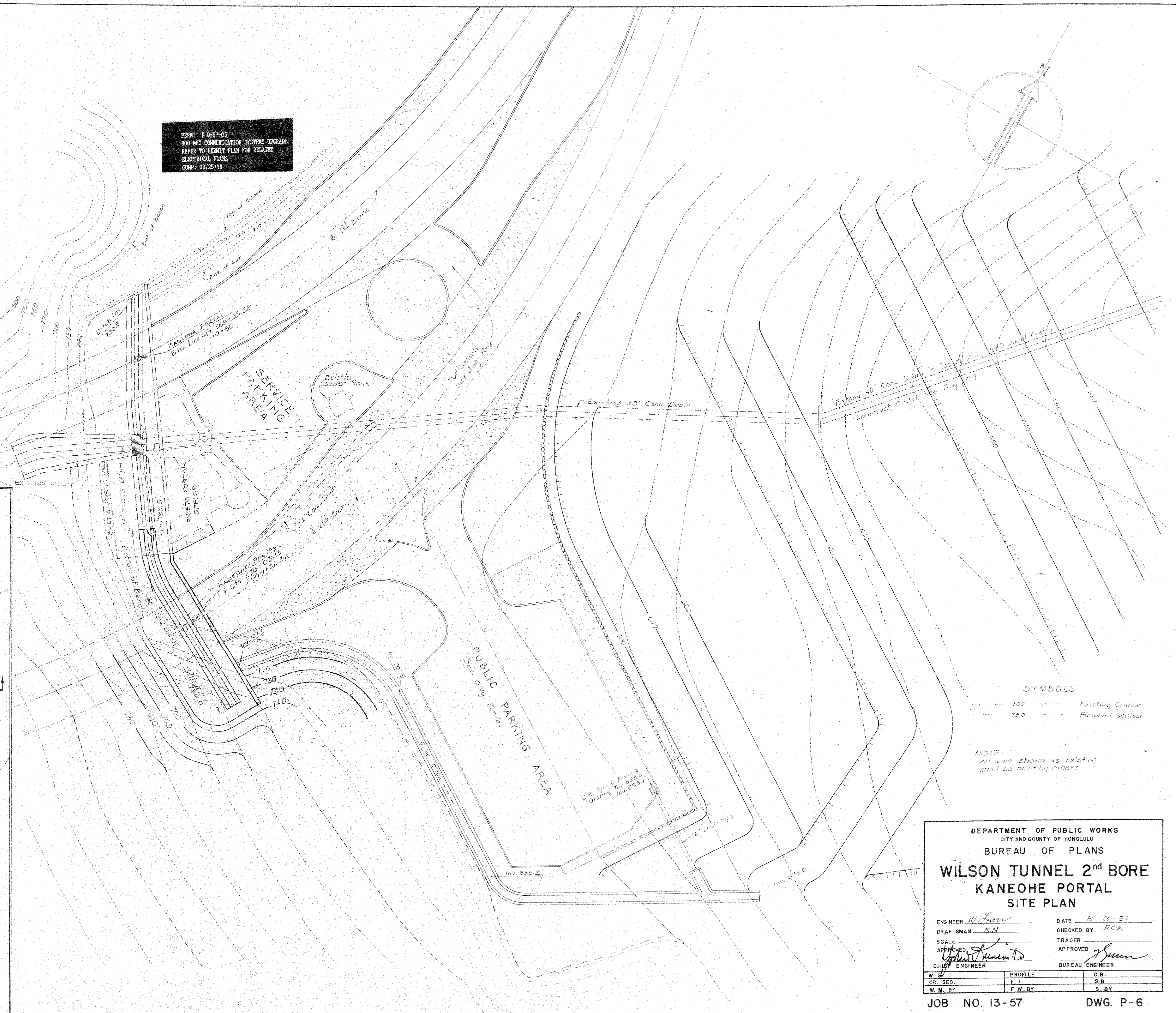
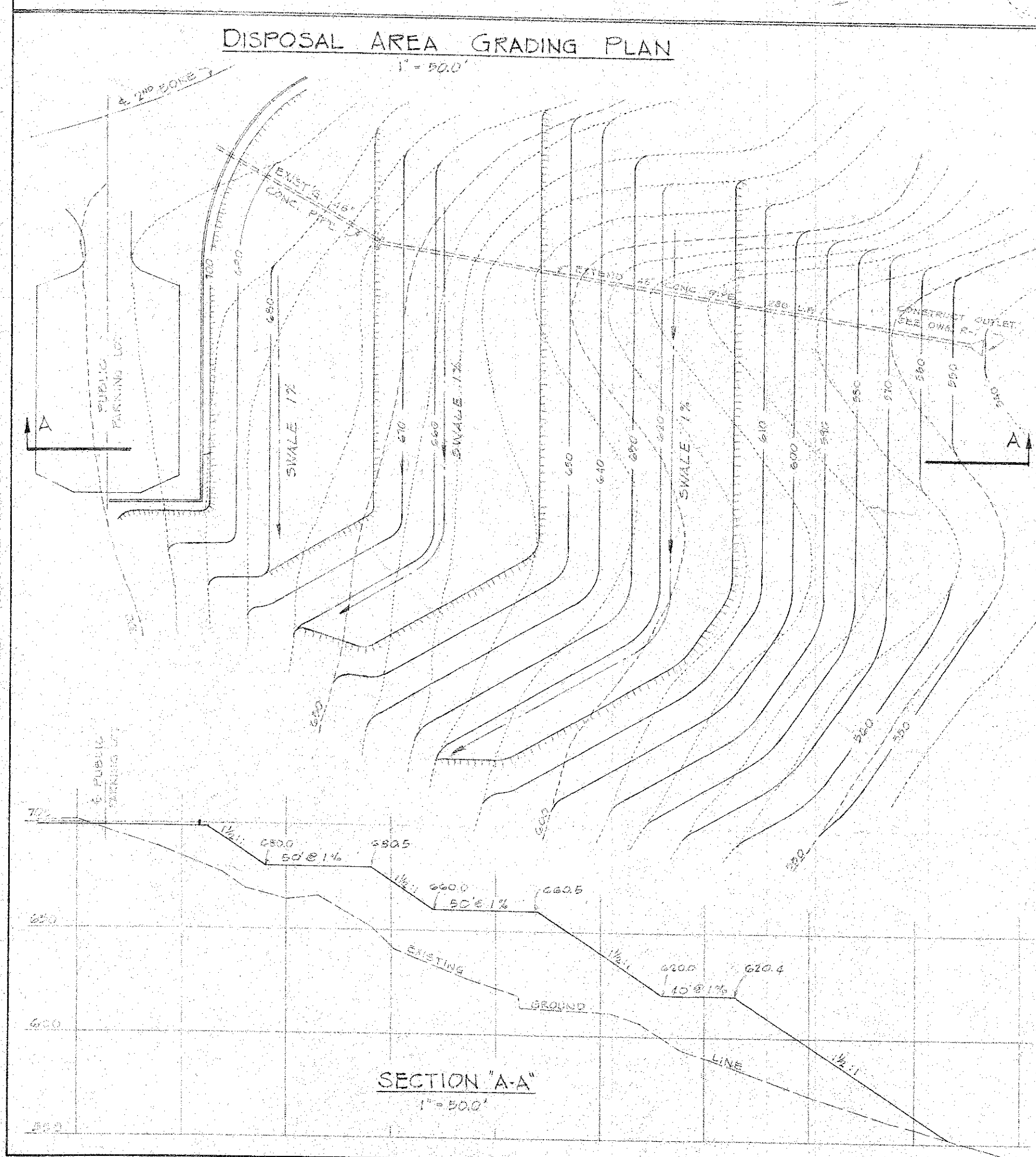


PERMIT # 0-97-05  
800 MHE COMMUNICATION SYSTEMS UPGRADE  
REFER TO PERMIT PLAN FOR RELATED  
ELECTRICAL PLANS  
COMP: 02/25/98



DEPARTMENT OF PUBLIC WORKS  
CITY AND COUNTY OF HONOLULU

BUREAU OF PLANS

**WILSON TUNNEL 2<sup>nd</sup> BORE**  
**KANEHOE PORTAL**  
**SITE PLAN**

ENGINEER <u><i>W. L. Linn</i></u>	DATE <u>8-3-57</u>
DRAFTSMAN <u>R.N.</u>	CHECKED BY <u>RCK</u>
SCALE	TRACER
APPROVED <u><i>Robert L. Linn</i></u>	APPROVED <u><i>W. L. Linn</i></u>
CHIEF ENGINEER	BUREAU ENGINEER

W. S.	PROFILE
CR. SEC.	F. S.
W. M. BY	F. W. BY
	C. B.
	S. B.
	S. BY