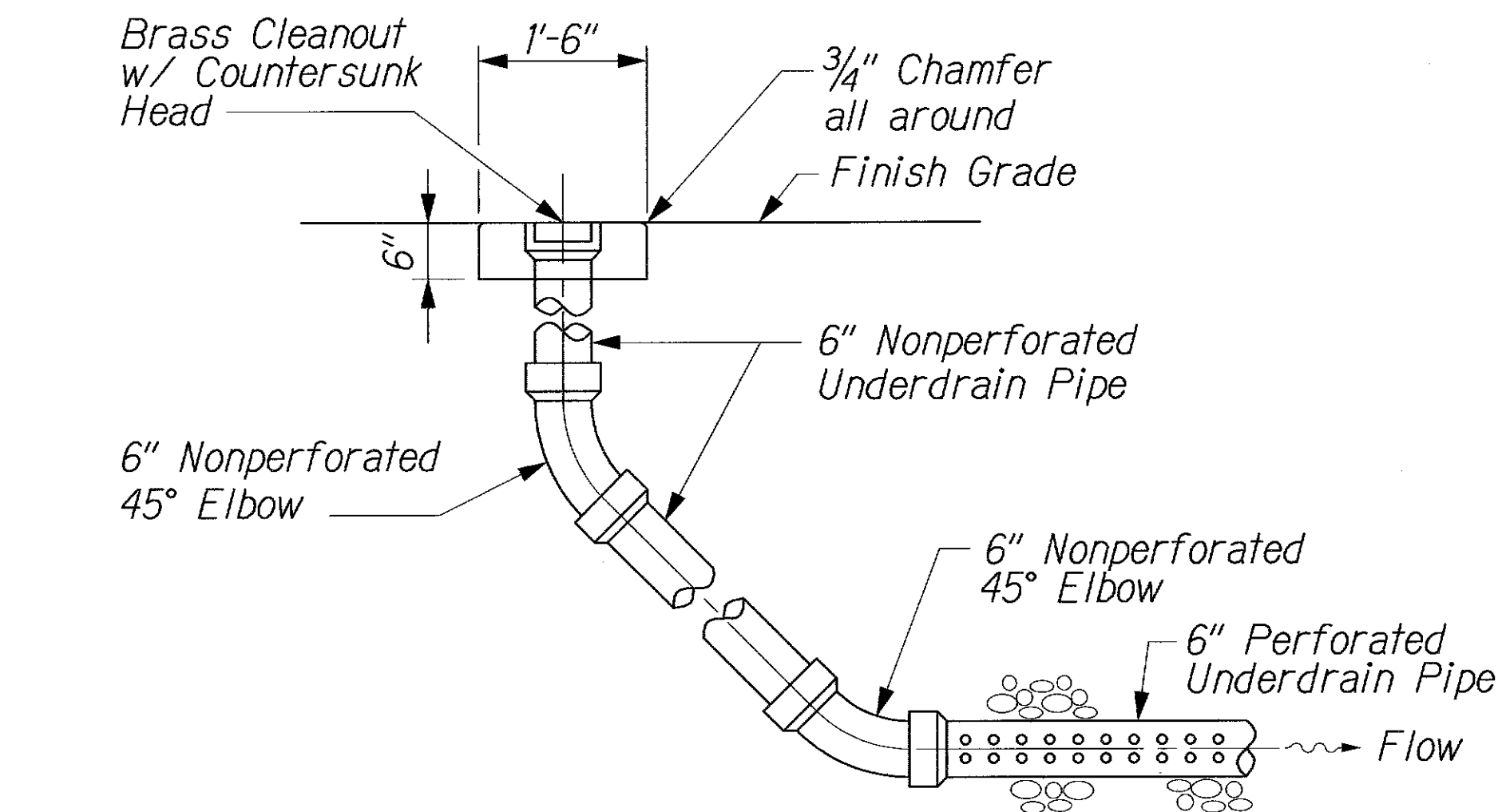
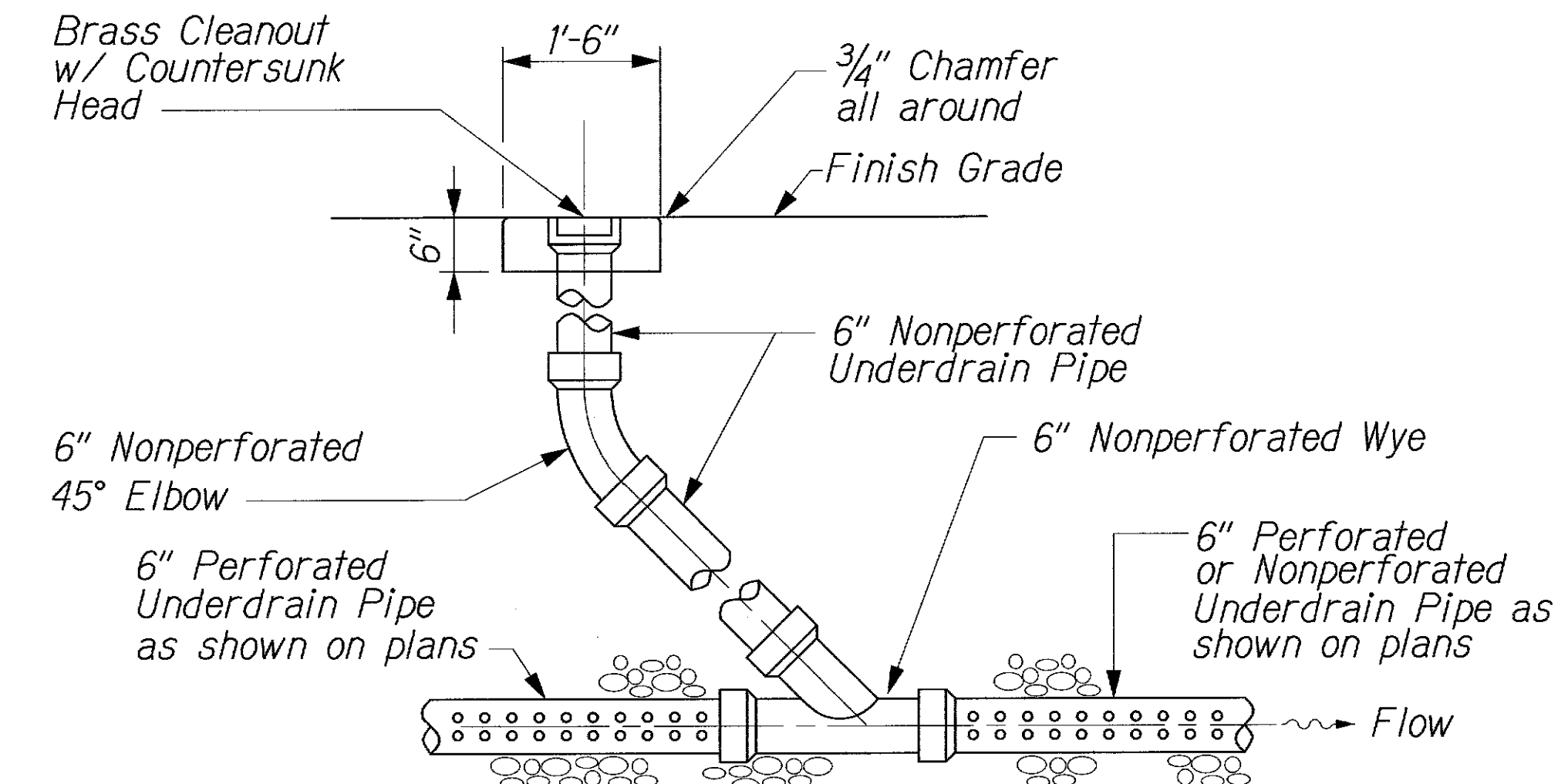


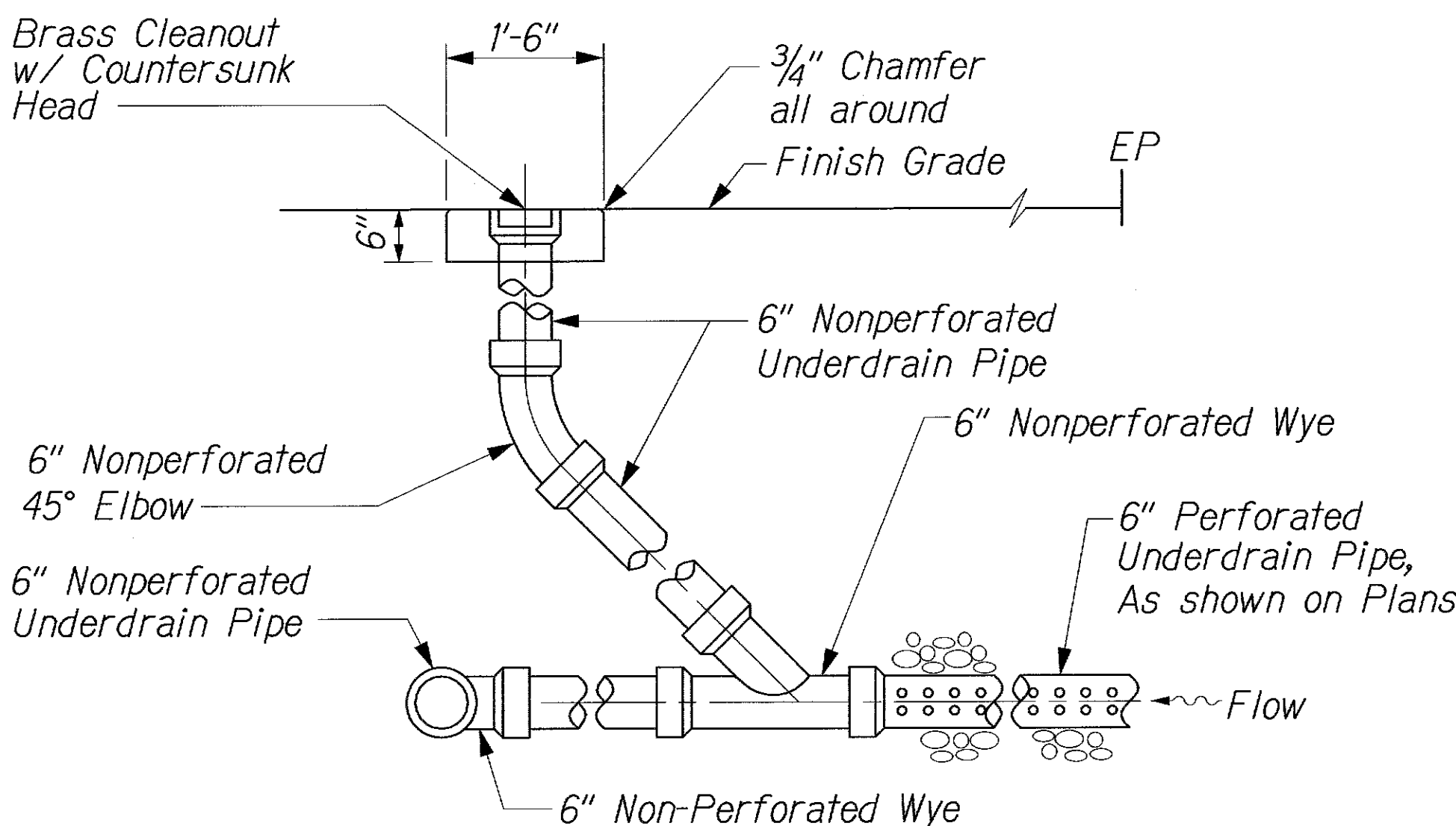
FED. ROAD DIST. NO.	STATE	PROJ. NO.	FISCAL YEAR	SHEET NO.	TOTAL SHEETS
HAWAII	HAW.	61C-01-04M	2004	15	91



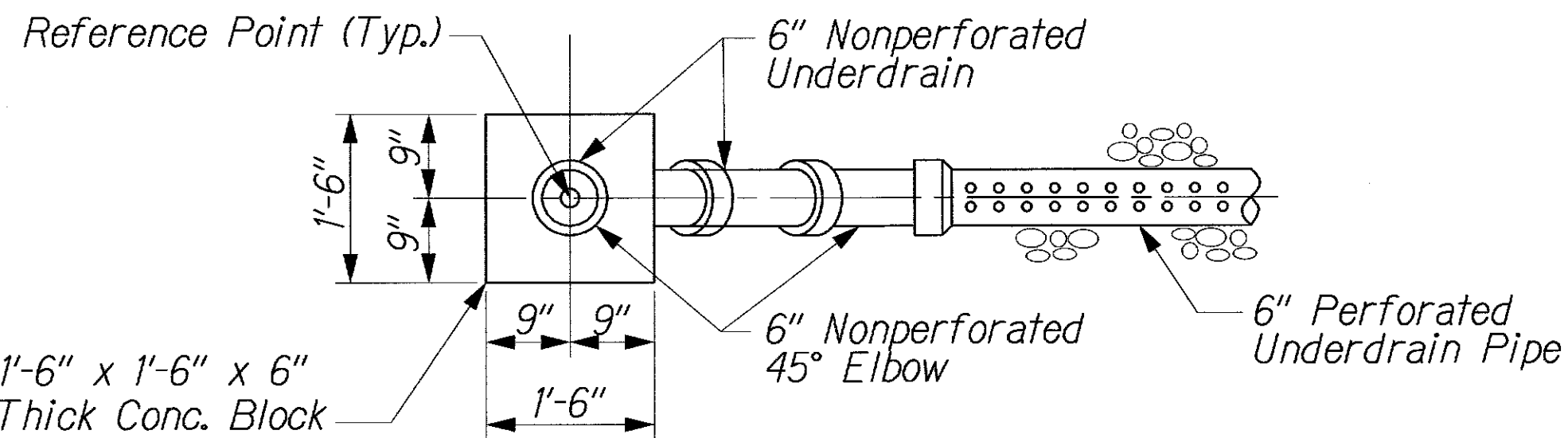
**CLEANOUT TYPE A**  
Not to Scale



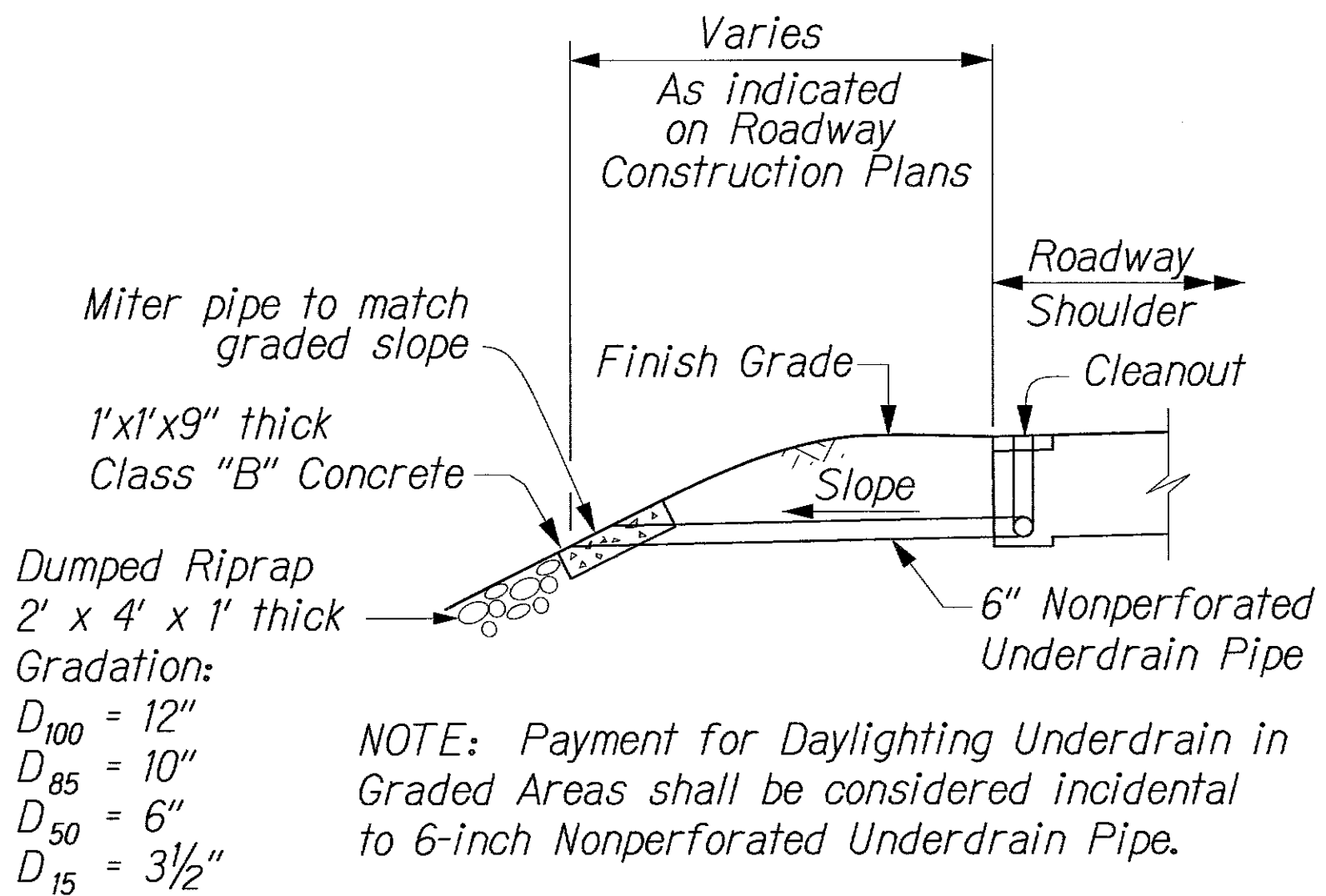
**CLEANOUT TYPE B**  
Not to Scale



**CLEANOUT TYPE C**  
Not to Scale



**TYPICAL CLEANOUT PLAN**  
Not to Scale



**DAYLIGHTING UNDERDRAIN IN GRADED AREAS**  
Not to Scale

UNDERDRAIN SUMMARY				
FROM BASELINE STATION (Castle Baseline)	TO BASELINE STATION (Castle Baseline)	6-INCH PERFORATED UNDERDRAIN PIPE	6-INCH NONPERFORATED UNDERDRAIN PIPE	TRANSVERSE UNDERDRAIN
UNIT		LIN FT	LIN FT	LIN FT
212+12, Lt.	214+50, Lt.	238		
214+51, Lt.	216+60, Lt.	209		
216+60, Rt.	216+60, Lt.			19
216+60, Lt.	218+50, Lt.	190		
218+50, Rt.	218+50, Lt.			19
218+51, Lt.	219+10, Lt.	59		
219+10, Lt.	221+20, Lt.	210		
221+21, Lt.	223+58, Lt.	237		
223+59, Rt.	223+59, Lt.			19
223+60, Lt.	224+25, Lt.		65	
TOTAL		1143	65	57
ROUNDED TOTAL		1150	70	60

CLEANOUT SUMMARY				
BASELINE STATION (Castle Baseline)	LOCATION	CLEANOUT TYPE A	CLEANOUT TYPE B	CLEANOUT TYPE C
UNIT		EACH	EACH	EACH
212+11	Lt.	1		
214+50	Lt.		1	
218+50	Lt.			1
221+20	Lt.		1	
223+58	Lt.		1	
223+59	Lt.			1
TOTAL		1	3	2

NOTE: Payment for Cleanout Types A, B, and C shall be paid under Pay Item No. 605.2000 Cleanout.

SURVEY PLOTTED BY	DATE
DRAWN BY	
DESIGNED BY	
NOTED BY	
CHECKED BY	
ORIGINAL PLAN	
NOTE BOOK	
QUANTITIES BY	
CHECKED BY	
N.	

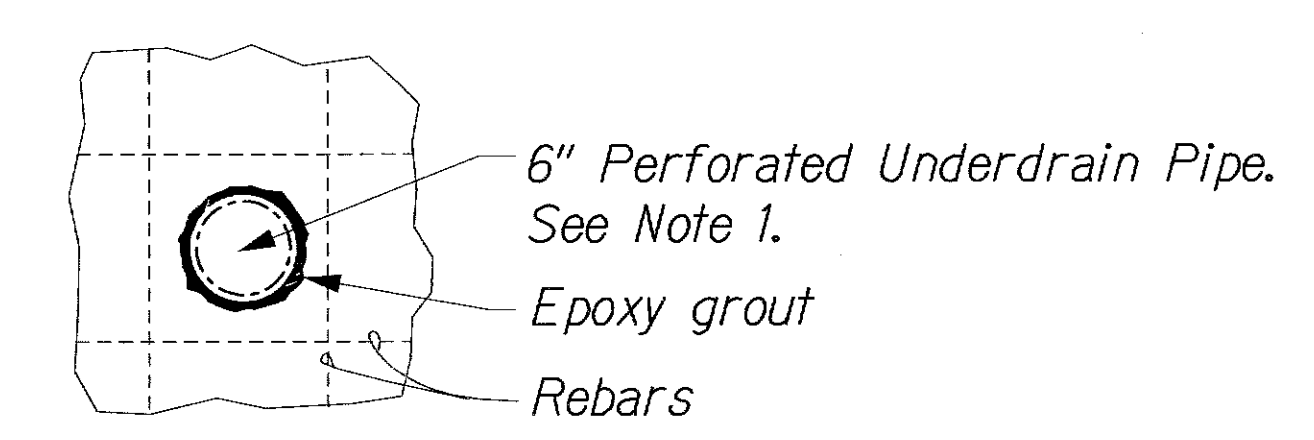
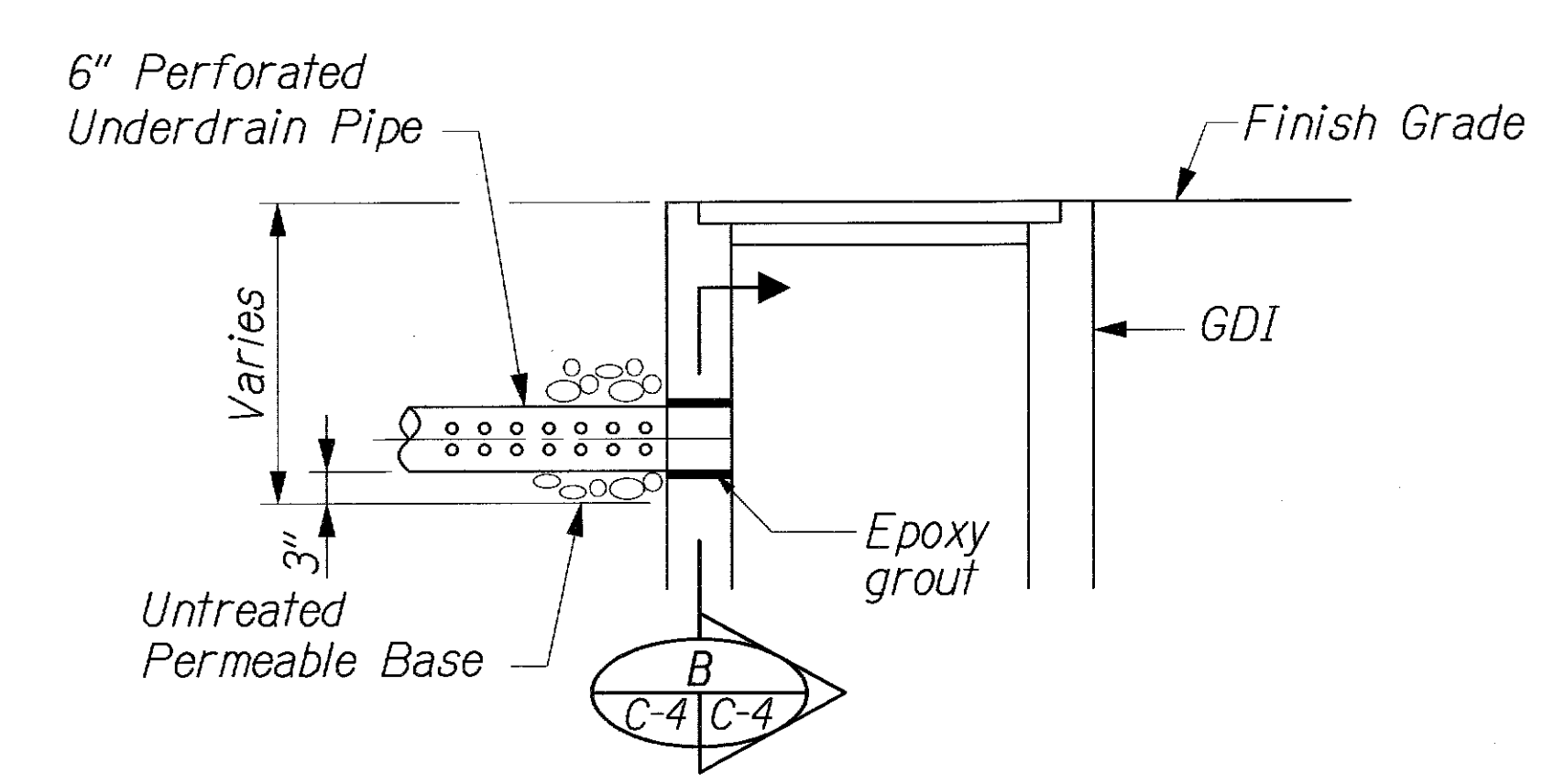
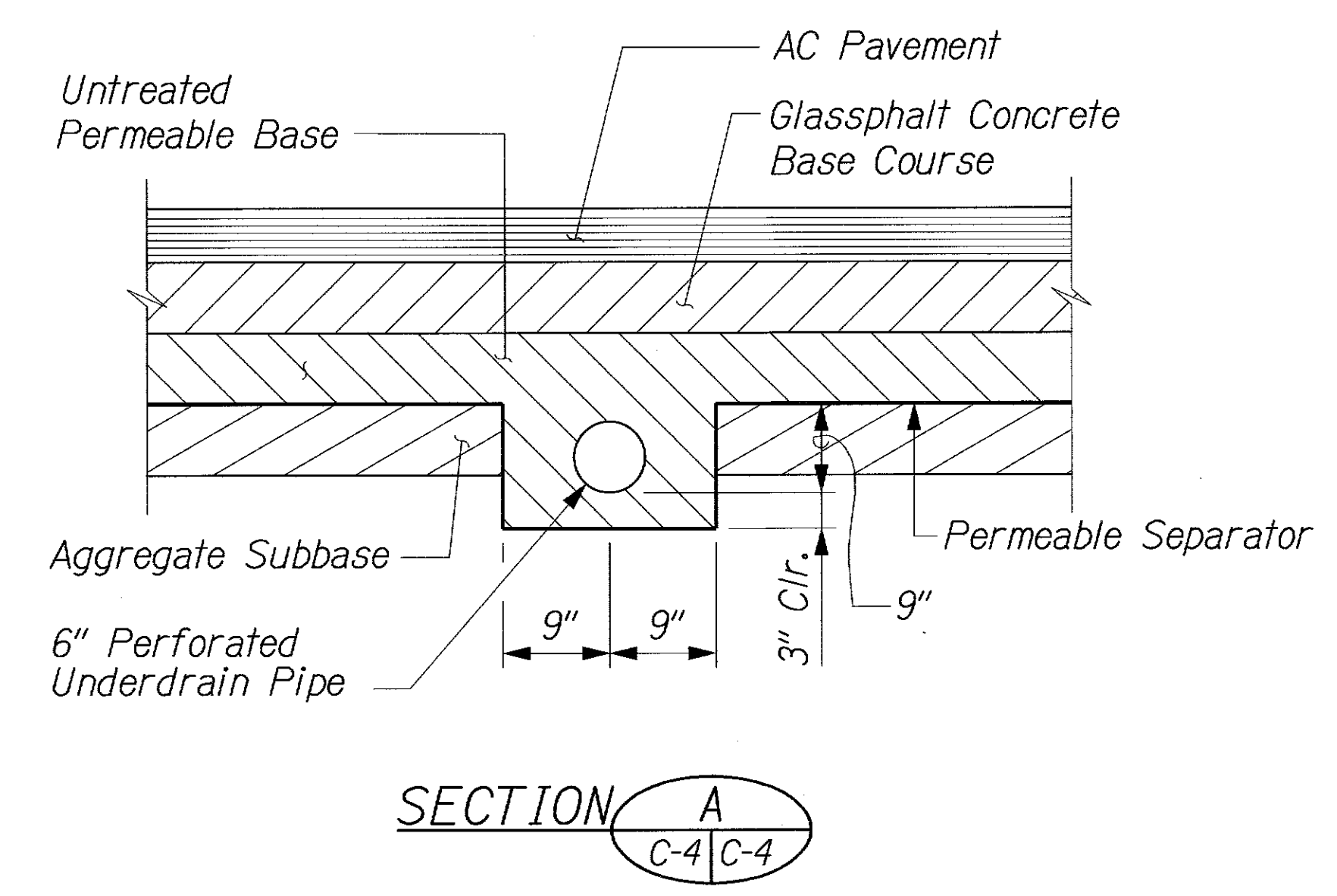
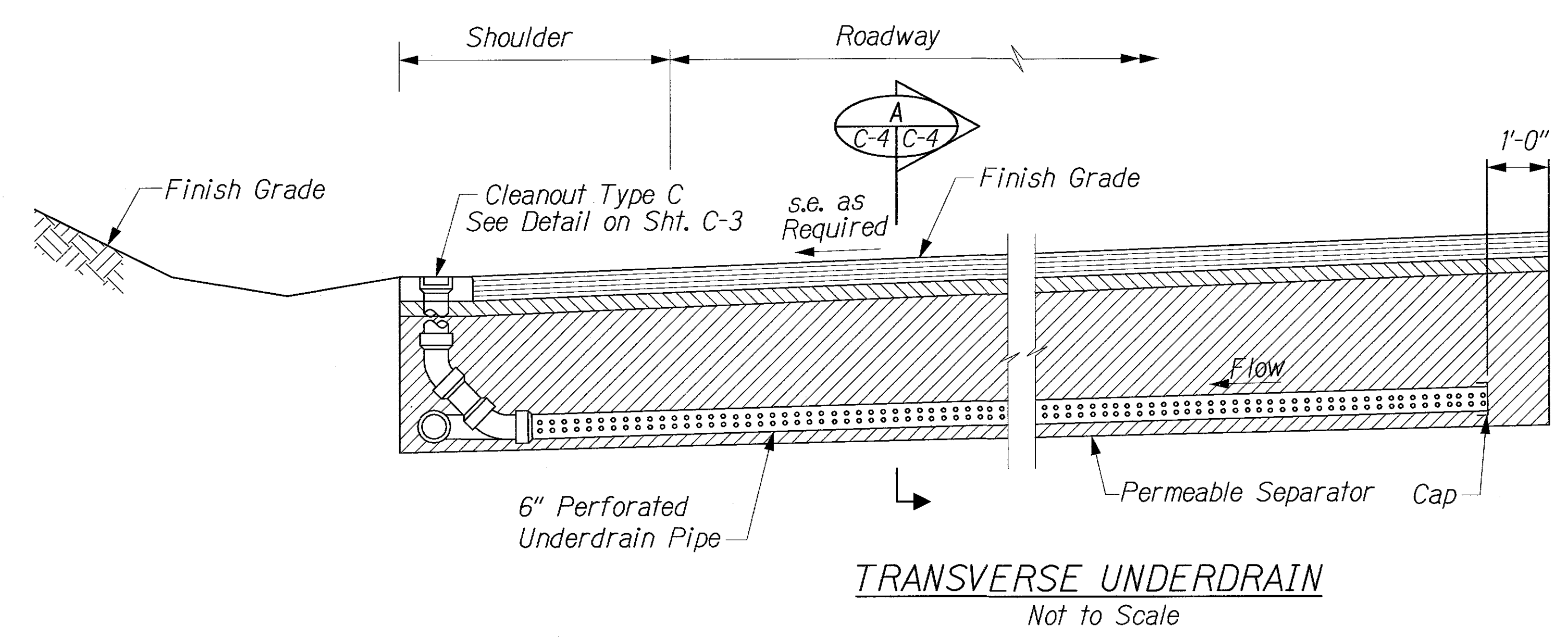
W/CASTLE JUNCTION ROAD/RODELLAIGN

THIS WORK WAS PREPARED BY ME OR UNDER MY SUPERVISION

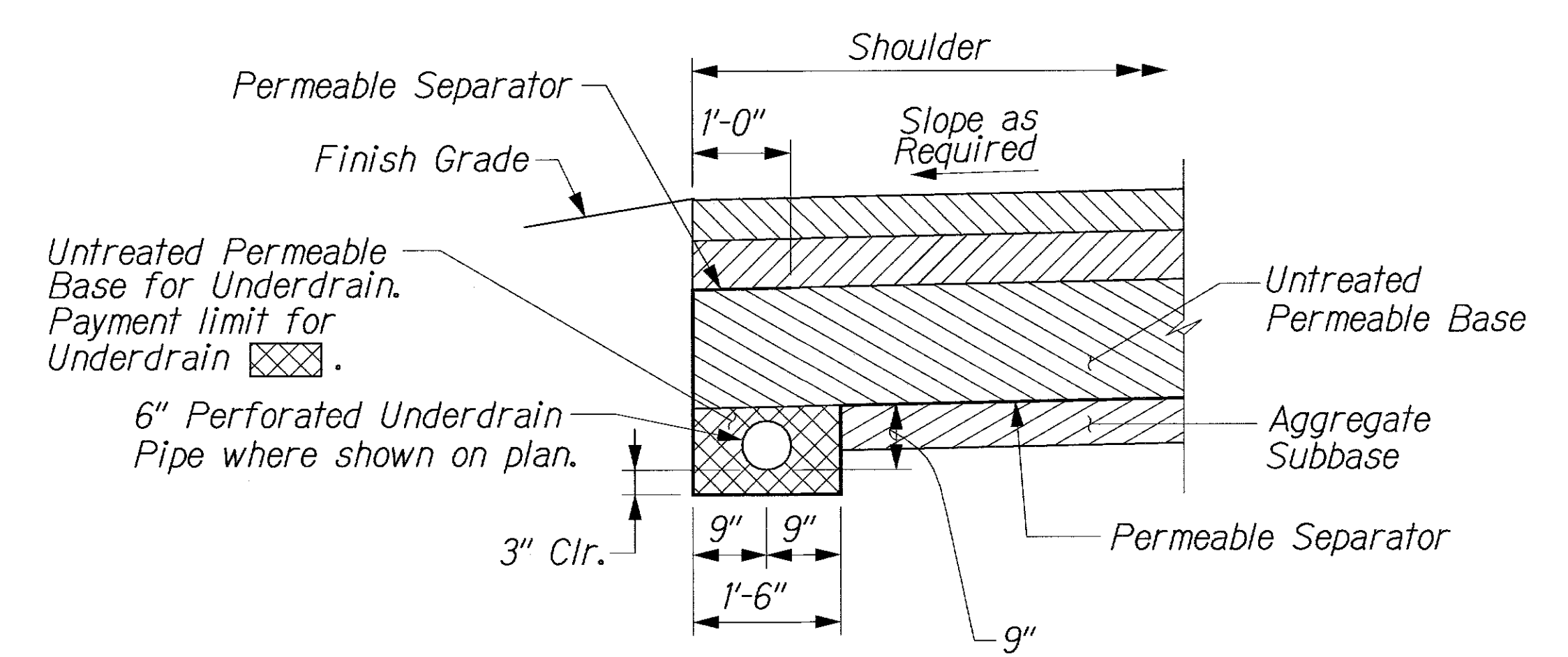
*R. M. Urasany*

STATE OF HAWAII  
DEPARTMENT OF TRANSPORTATION  
HIGHWAYS DIVISION  
**ROADWAY CONSTRUCTION**  
**UNDERDRAIN DETAILS & SUMMARY**  
KALANIANA'OLE HIGHWAY  
EMERGENCY LANDSLIDE REPAIRS AT CASTLE JUNCTION  
PROJECT NO. 61C-01-04M  
Scale: As Shown Date: Sept. 26, 2003  
SHEET No. C-3 OF 12 SHEETS

FED. ROAD DIST. NO.	STATE	PROJ. NO.	FISCAL YEAR	SHEET NO.	TOTAL SHEETS
HAWAII	HAW.	61C-01-04M	2004	16	91



- NOTE:**
1. The Contractor shall avoid cutting the rebars. In case the pipe opening interferes with the rebars, the opening shall be enlarged and the location of the pipe shall be adjusted to pass between the rebars as shown. The enlarged hole shall be patched with epoxy grout.
  2. Payment for connection to drainage structures shall be considered incidental to 6-inch Perforated Underdrain Pipe.



SECTION B  
C-4 C-4

ORIGINAL PLAN	SURVEY PLOTTED BY	DATE
NOTE BOOK	DRAWN BY	
	CHECKED BY	
	QUANTITIES BY	

U:\CASTLE JUNCTION\ROAD\RCDET2.dgn

THIS WORK WAS PREPARED BY ME OR UNDER MY SUPERVISION

*R. M. Urasani* 11/29/04

STATE OF HAWAII  
DEPARTMENT OF TRANSPORTATION  
HIGHWAYS DIVISION  
**ROADWAY CONSTRUCTION**  
**UNDERDRAIN DETAILS**  
KALANIANA'OLE HIGHWAY  
EMERGENCY LANDSLIDE REPAIRS AT CASTLE JUNCTION  
PROJECT NO. 61C-01-04M  
Scale: As Shown Date: Sept. 26, 2003  
SHEET No. C-4 OF 12 SHEETS