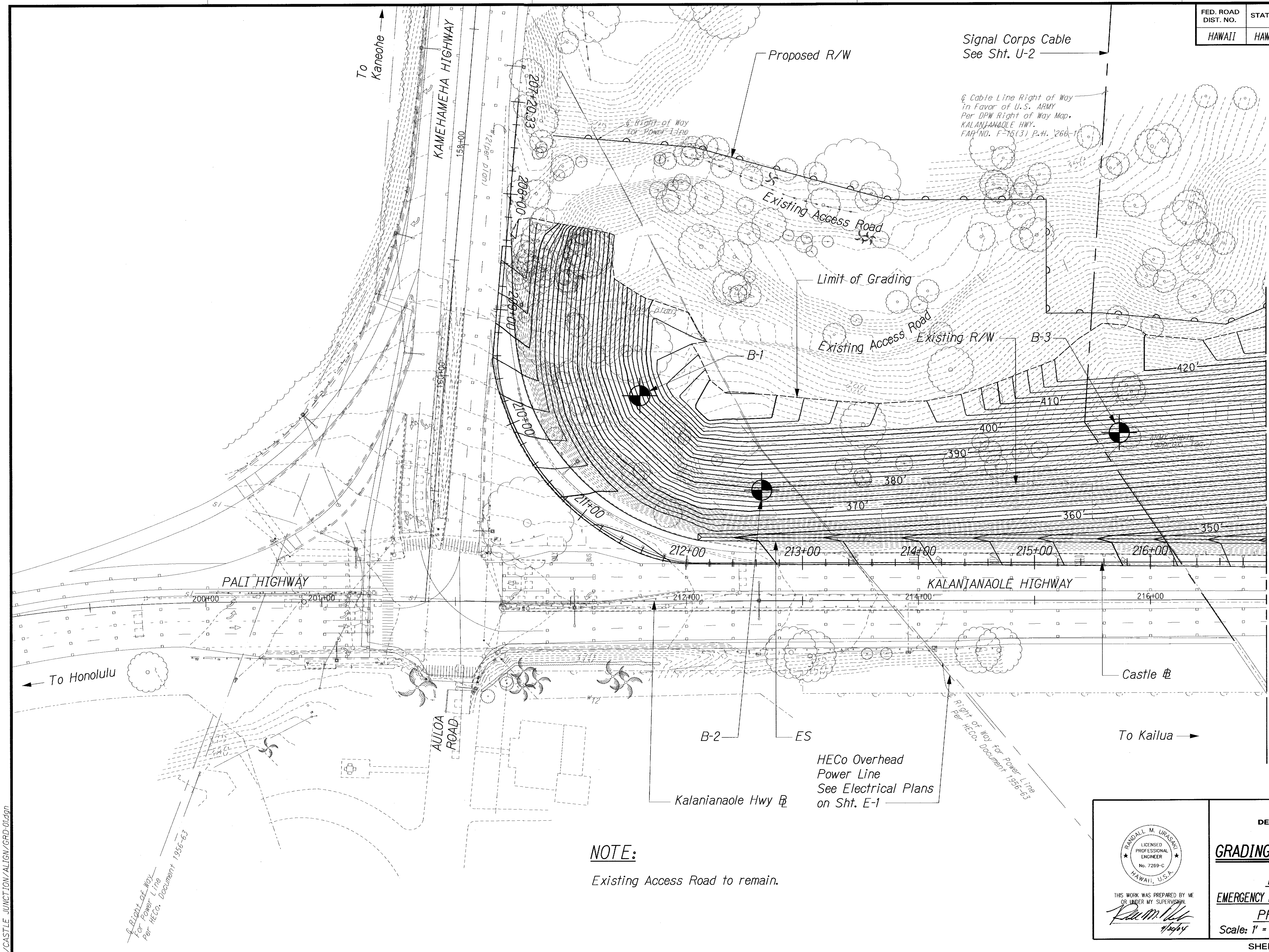


FED. ROAD DIST. NO.	STATE	PROJ. NO.	FISCAL YEAR	SHEET NO.	TOTAL SHEETS
HAWAII	HAW.	61C-01-04M	2004	11	91



TRUE NORTH
SCALE: 1" = 40'

NOTE:
Existing Access Road to remain.

STATE OF HAWAII
DEPARTMENT OF TRANSPORTATION
HIGHWAYS DIVISION

GRADING PLAN & BORING LOCATION

KALANIANA'OLE HIGHWAY
EMERGENCY LANDSLIDE REPAIRS AT CASTLE JUNCTION

PROJECT NO. 61C-01-04M
Scale: 1" = 40' Date: Sept. 26, 2003

SHEET No. 6-1 OF 2 SHEETS

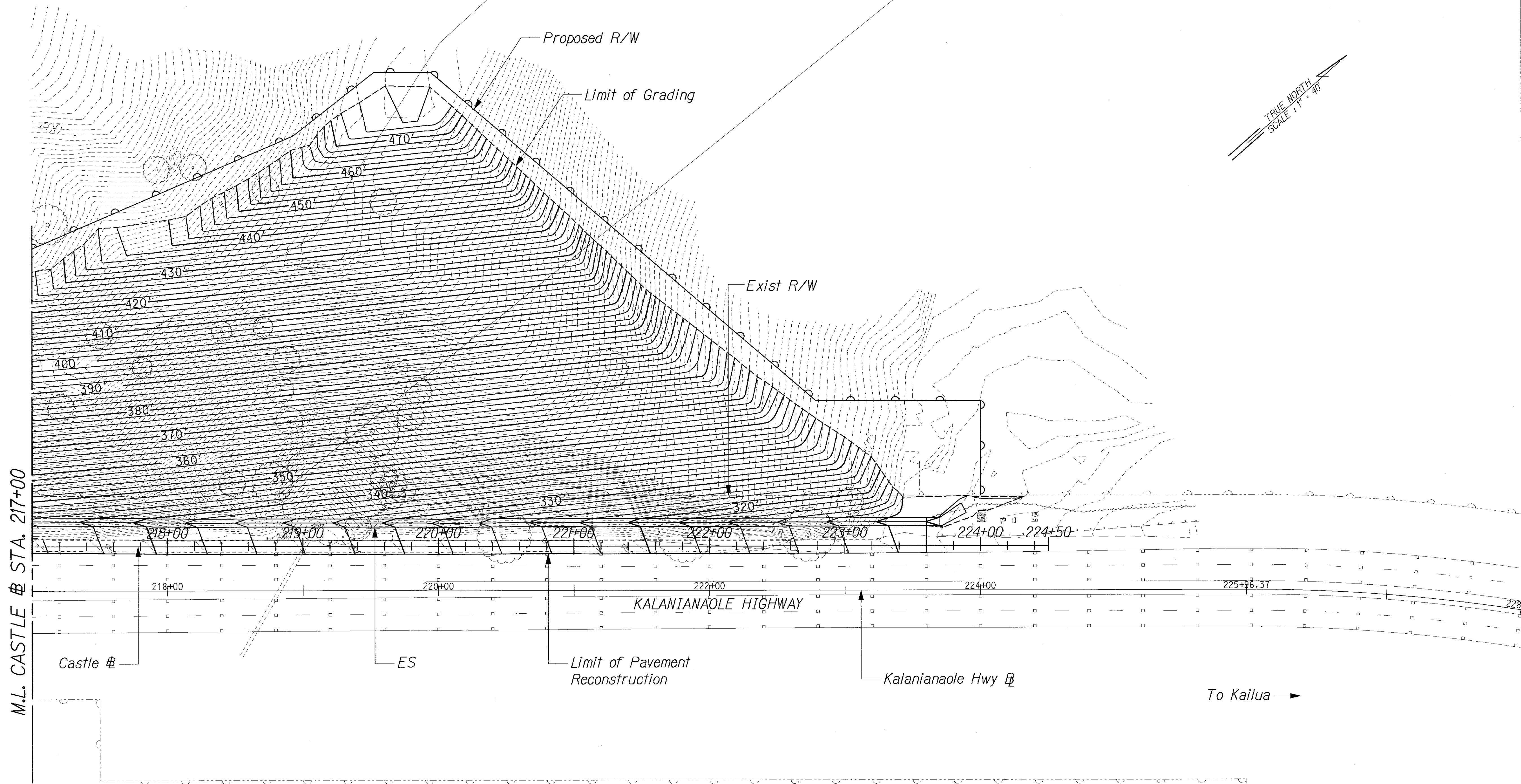
THIS WORK WAS PREPARED BY ME
OR UNDER MY SUPERVISION

Randall M. Urasawa
7/26/04

RANDALL M. URASAWA
LICENSED PROFESSIONAL ENGINEER
No. 7289-C
HAWAII, U.S.A.

ORIGINAL PLAN	SURVEY PLOTTED BY	DATE
NOTE BOOK	TRACED BY	
	DESIGNED BY	
	CHECKED BY	

FED. ROAD DIST. NO.	STATE	PROJ. NO.	FISCAL YEAR	SHEET NO.	TOTAL SHEETS
HAWAII	HAW.	61C-01-04M	2004	12	91



ORIGINAL PLAN	SURVEY PLOTTED BY	DATE
NOTE BOOK	DRAWN BY	
	DESIGNED BY	
	CHECKED BY	

J:\CASTLE JUNCTION\ALIGN\GRD-02.dgn

THIS WORK WAS PREPARED BY ME
OR UNDER MY SUPERVISION.

R. M. Urashy

STATE OF HAWAII
DEPARTMENT OF TRANSPORTATION
HIGHWAYS DIVISION

GRADING PLAN

KALANIANA'OLE HIGHWAY

EMERGENCY LANDSLIDE REPAIRS AT CASTLE JUNCTION

PROJECT NO. 61C-01-04M

Scale: 1" = 40' Date: Sept. 26, 2003

SHEET No. G-2 OF 2 SHEETS