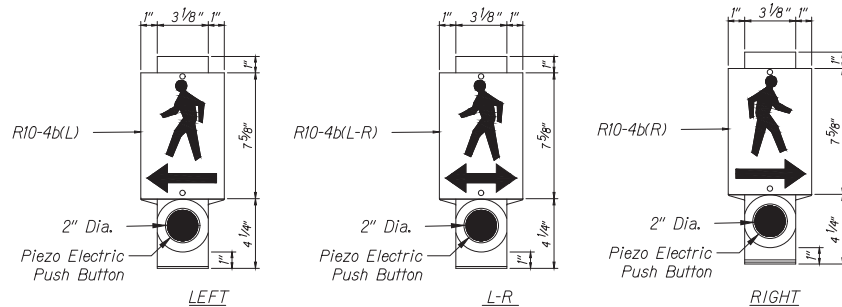


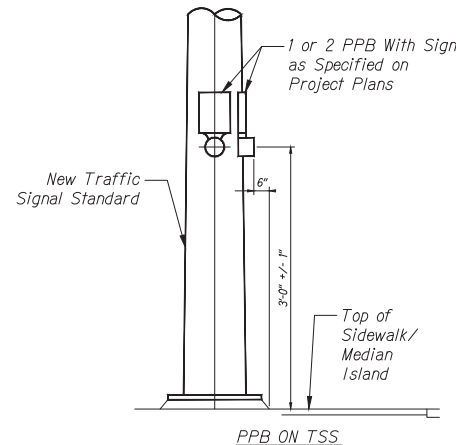
FED. ROAD DIST. NO.	STATE	PROJ. NO.	FISCAL YEAR	SHEET NO.	TOTAL SHEETS
HAWAII	HAW.	61D-01-23	2023	76	87

THE Color Scheme Shall Be:
 White - Man, Arrow and Push Button
 Black - Background
 NOTE: On Plan Sheet, Use Applicable Detail.



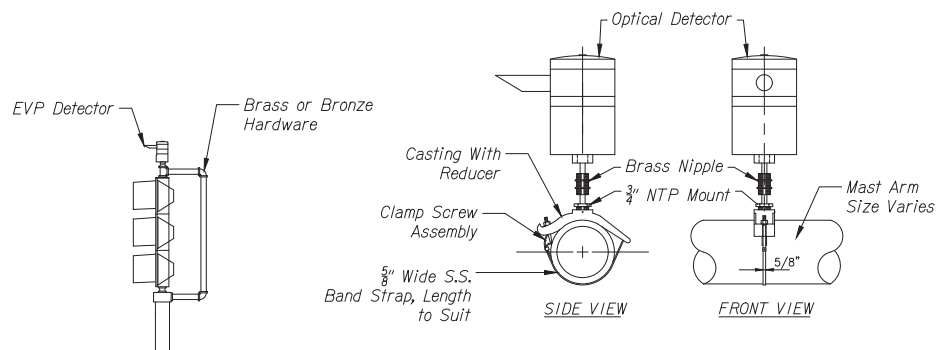
PEDESTRIAN PUSH BUTTON DETAILS

Not to Scale



NOTES:

- The pedestrian push button shall meet operational requirements of the American with Disabilities Act Accessibility Guidelines (ADAAG):
 - Operation. Controls and operating mechanisms shall be operable with one hand and shall not require tight grasping, pinching, or twisting of the wrist. The force required to activate controls shall be no greater than 5 lbf.
- There shall be 30" x 48" level ground surface (2% max, cross slope, both directions) for a forward or side approach, as appropriate, to a pedestrian push button.
- Refer to HDOT Standard Plans TE-32 for additional requirements.



OPTICAL DETECTOR FOR MAST ARM MOUNTING

Not to Scale

POST TOP TP-EVP MOUNTING

Not to Scale

NOTES:

- Optical Detector shall be "Model 711 Preemption Detector" or approved equal, unless noted otherwise in the Special Provisions.
- Support Saddle assembly shall be "Astro Mini-Brac, AB-0132-29", or approved equal, unless noted otherwise in the Special Provisions.

DESIGNED BY	DATE
DRAWN BY	DATE
CHECKED BY	DATE
IN CHARGE	DATE
PROJECT NO.	
SHEET NO.	

THIS WORK WAS PREPARED BY ME OR UNDER MY SUPERVISION AND CONSTRUCTION OF THIS PROJECT WILL BE UNDER MY OBSERVATION.

4/20/24

STATE OF HAWAII
DEPARTMENT OF TRANSPORTATION
HIGHWAYS DIVISION

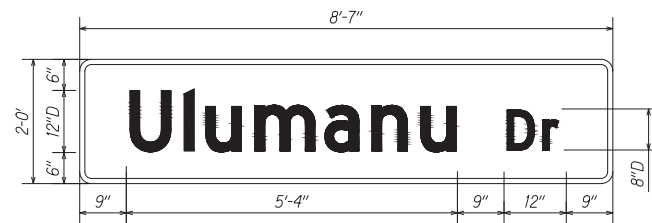
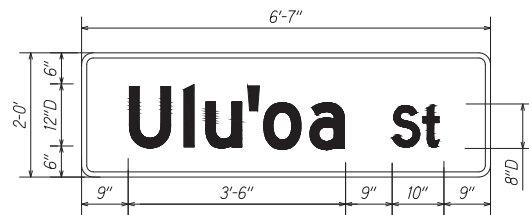
TRAFFIC SIGNAL DETAILS - 1

KAILUA ROAD INTERSECTION IMPROVEMENTS
Vicinity of Ulukou Street and Ulukou Drive
Project No. 61D-01-23

Scale: NTS Date: Dec, 2023

SHEET No. 1 OF 2 SHEETS

FED. ROAD DIST. NO.	STATE	PROJ. NO.	FISCAL YEAR	SHEET NO.	TOTAL SHEETS
HAWAII	HAW.	61D-01-23	2023	77	87



Street Name Sign Details
Scale : NTS



R17-3 (Rev) Detail
Scale : NTS

DESIGNED BY	DATE
DRAWN BY	
CHECKED BY	
INVESTIGATED BY	
APPROVED BY	
NO.	

TEY M. A. TONG
LICENSED PROFESSIONAL ENGINEER
No. 15540-C
HAWAII, U.S.A.

THIS WORK WAS PREPARED BY ME OR UNDER MY SUPERVISION AND CONSTRUCTION OF THIS PROJECT WILL BE UNDER MY OBSERVATION.

Tey M. A. Tong
SIGNATURE 4/30/24
DATE OF SIGNATURE

STATE OF HAWAII
DEPARTMENT OF TRANSPORTATION
HIGHWAYS DIVISION

TRAFFIC SIGNAL DETAILS - 2

*KAILUA ROAD INTERSECTION IMPROVEMENTS
Vicinity of Ulu'oa Street and Ulumanu Drive
Project No. 61D-01-23*

Scale: NTS Date: Dec, 2023