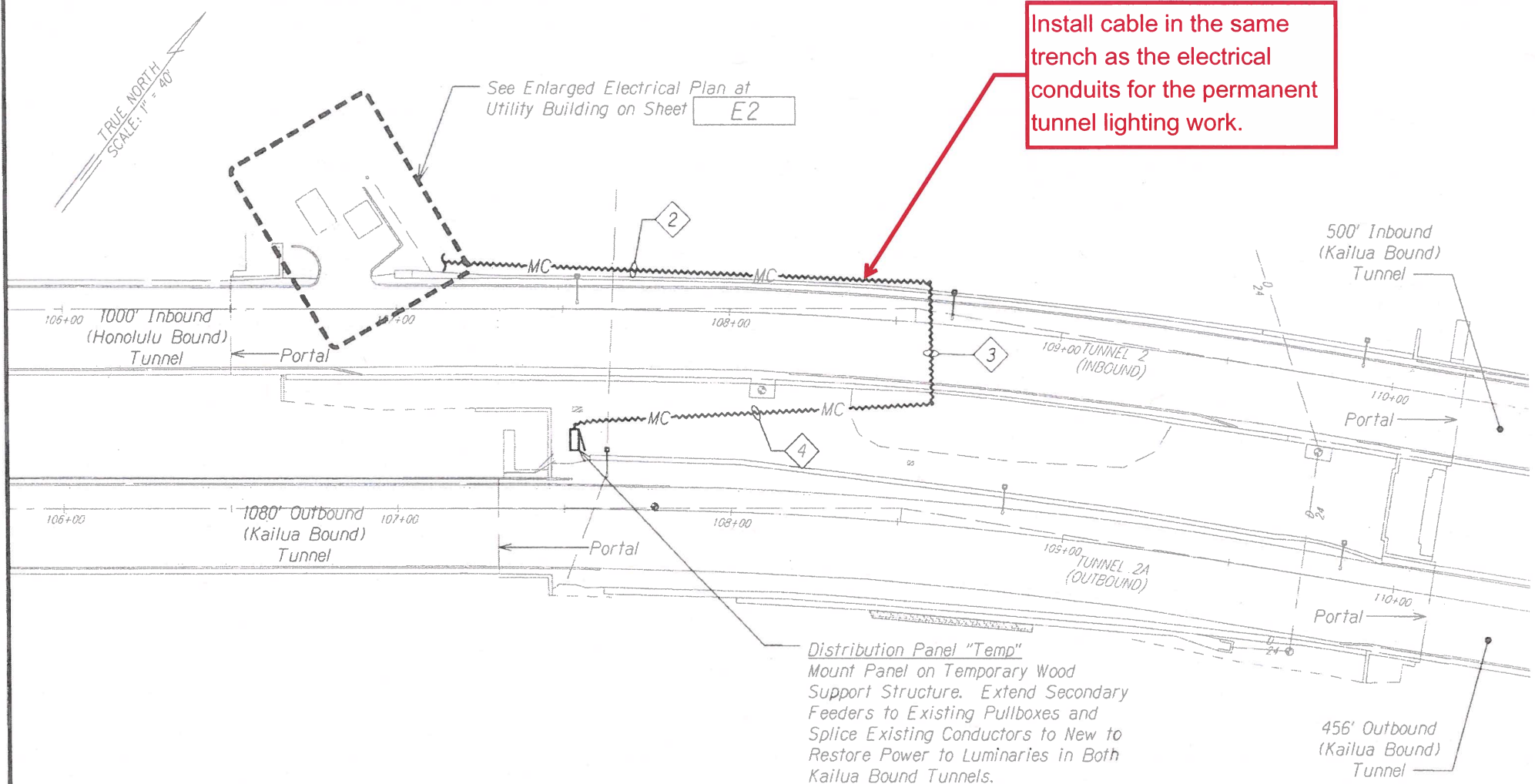


FED. ROAD DIST. NO.	STATE	FED. AID PROJ. NO.	FISCAL YEAR	SHEET NO.	TOTAL SHEETS
-	-	-	2019	-	-



### Electrical Symbols List

- Panel Board
- Enclosed Circuit Breaker
- PVC-Jacketed, MC Cable, Wet Location Rated
- Exposed Conduit & Wiring
- Underground Ductline

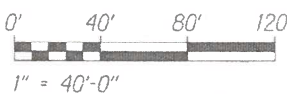
### Partial Site Electrical Plan

SCALE: 1" = 40'-0"

#### NOTES:

- Light Lines Denote Existing Condition  
Bold Lines Denote New Work
- Surface Mount Cable to Bridge Structure. Provide Protective Cover Where Exposed to Physical Damage.
- Surface Mount Cable to Underside of Bridge Structure.
- Elevate Cable Above Grade with Appropriate Wood Bracing or Similar. Provide Protective Cover Where Exposed to Physical Damage.

GRAPHIC SCALE:



STATE OF HAWAII  
DEPARTMENT OF TRANSPORTATION  
HIGHWAYS DIVISION

**PARTIAL SITE ELECTRICAL PLAN**

PALI HIGHWAY EMERGENCY REPAIRS

FAP NO. NH-HI-1(274)

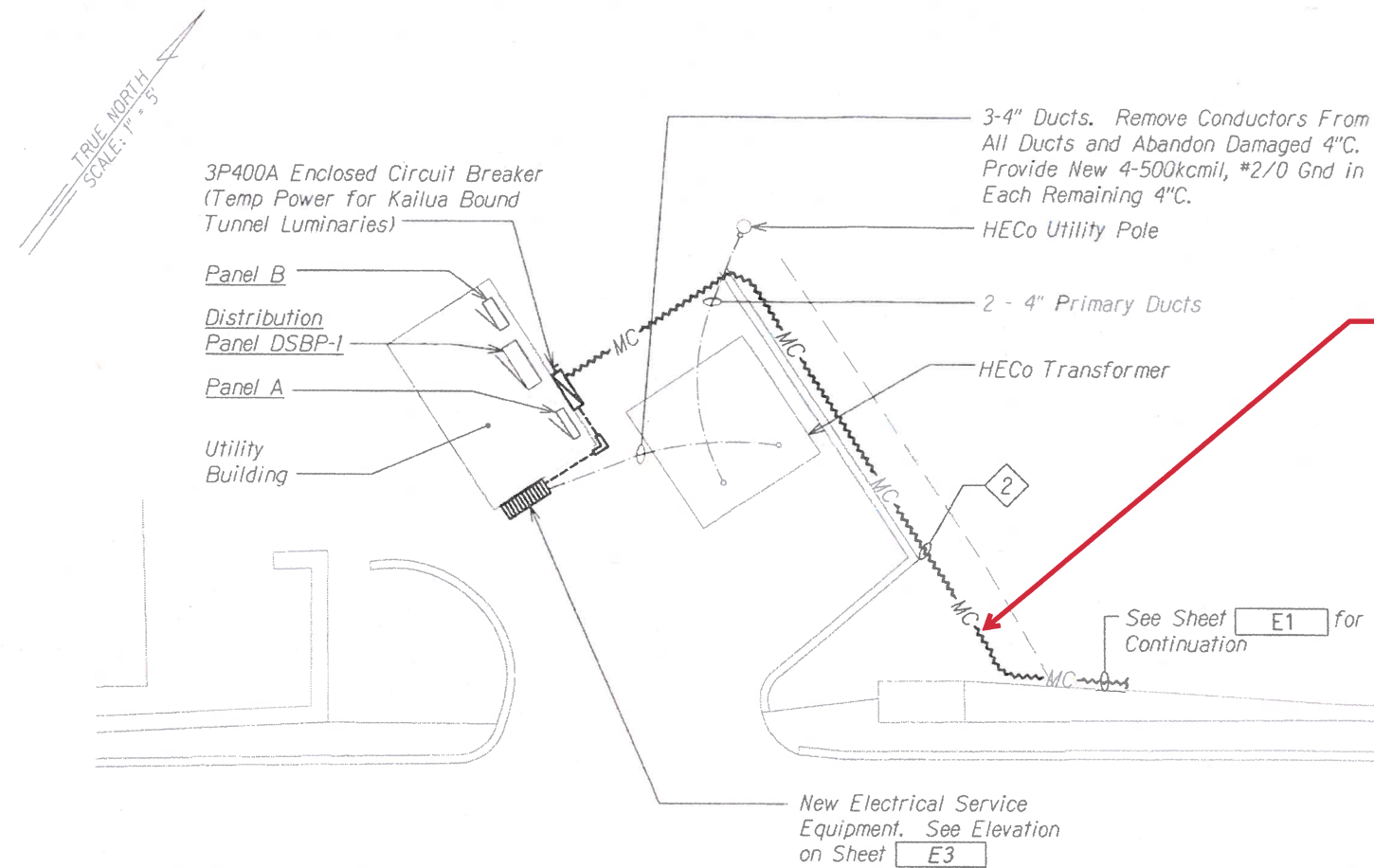
Scale: As Noted Date: March 31, 2019

SHEET No. E1 OF SHEETS

"AS-BUILT"

FED. ROAD DIST. NO.	STATE	FED. AID PROJ. NO.	FISCAL YEAR	SHEET NO.	TOTAL SHEETS
-	-	-	2019	-	-

16007



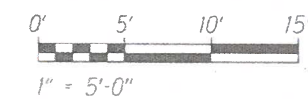
Install cable in the same trench as the electrical conduits for the permanent tunnel lighting work.

Enlarged Site Electrical Plan at Utility Building  
SCALE: 1" = 5'-0"

NOTES:

1. Light Lines Denote Existing Condition  
 Bold Lines Denote New Work
2. Elevate Cable Above Grade with Appropriate Wood Bracing or Similar. Provide Protective Cover Where Exposed to Physical Damage.

GRAPHIC SCALE:



**"AS-BUILT"**

DESIGNED BY	DATE
DRAWN BY	
CHECKED BY	
APPROVED BY	
NOTED BY	
QUANTITIES BY	
CHECKED BY	
No.	

RUSSELL K. MORI  
LICENSED PROFESSIONAL ENGINEER  
No. 90135  
3/14/19  
HAWAII, USA

ALL ENGINEERS, LTD.  
LICENSE EXPIRATION DATE: 4/30/20  
THIS WORK WAS PREPARED BY ME OR UNDER MY SUPERVISION.

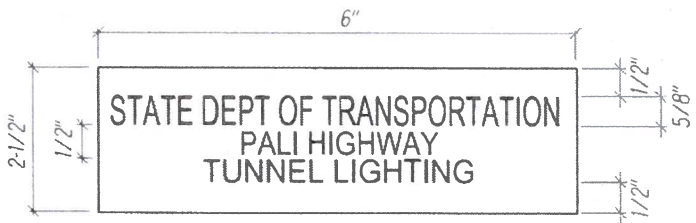
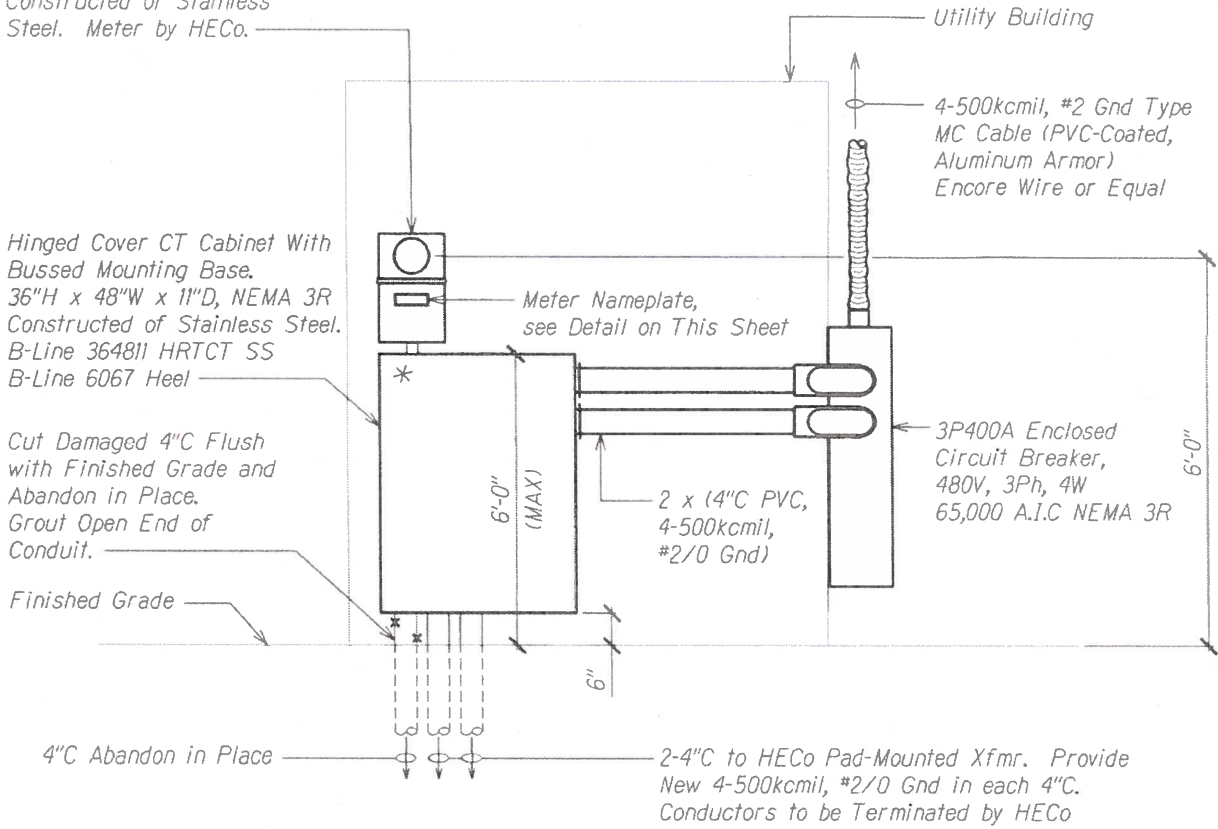
STATE OF HAWAII  
DEPARTMENT OF TRANSPORTATION  
HIGHWAYS DIVISION

**PARTIAL SITE ELECTRICAL PLAN**  
PALI HIGHWAY EMERGENCY REPAIRS

FAP NO. NH-HI-K274)  
Scale: As Noted Date: March 31, 2019  
SHEET No. E2 OF SHEETS

FED. ROAD DIST. NO.	STATE	FED. AID PROJ. NO.	FISCAL YEAR	SHEET NO.	TOTAL SHEETS
-	-	-	2019	-	-

CT Rated Safety Socket  
Box With Test Switch  
Provisions NEMA 3R  
Constructed of Stainless  
Steel. Meter by HECO.



Meter Nameplate Detail

NTS

NOTES:

1. Use 3-Ply Laminated Flexible Plastic, Black-White-Black Thickness: Black Cap Sheet - 0.010", White Base Sheet - 0.052", Black Base Sheet - 0.010".
2. Attach to Meter Box Using Scotch 3M Brand Very High Bond (VHB) Double Coated Acrylic Foam Tape or Equivalent.
3. Letters/Numbers Shall be 1/16" Stroke, (White in Color).
4. Letters/Numbers Shall be Inscribed by Cutting Through "Black Cap Sheet" to Expose White Letters/Numbers.

Service Equipment Elevation

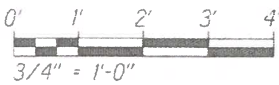
SCALE: 3/4" = 1'-0"

NOTES:

1. ——— Light Lines Denote Existing Condition  
— X — X — "X" Denotes Removal Work  
————— Bold Lines Denote New Work
2. \* - HECO Sealable.
3. Service Equipment Shall be Installed in Accordance with HECO ESIM Requirements.
4. Provide a Minimum of 4 Feet of Clear and Level Workspace Clearance in Front of Metering and Service Equipment.
5. Provide Plastic Meter Socket Cover and Band for all Blank Meter Sockets. Label Plastic Cover with Contractor's Name and Number so Cover can be Returned After Meter Installation.
6. Provide a Permanent Phenolic Nameplate (Black with White Letters) for all Meter Sockets to Identify the Address, Unit, Space, Area or Load Served (E.G. "Parking Lot").

SURVEY PLATTED BY	DATE
DRAWN BY	
DESIGNED BY	
QUANTITY BY	
CHECKED BY	
GENERAL PLAN	NOTE BOOK
No.	

GRAPHIC SCALE:



STATE OF HAWAII  
DEPARTMENT OF TRANSPORTATION  
HIGHWAYS DIVISION

**PARTIAL SITE ELECTRICAL  
PLAN**

PALI HIGHWAY EMERGENCY REPAIRS

FAP NO. NH-HI-K274)

Scale: As Noted      Date: March 31, 2019

SHEET No. E3 OF SHEETS

"AS-BUILT"