

SITE PLAN
REHABILITATION OF PALI HIGHWAY
WAIKANAKA STREET TO KAMEHAMEHA HIGHWAY
HONOLULU TO KANELOE, OAHU, HAWAII

- LEGEND:**
- APPROXIMATE BORING LOCATION
 - APPROXIMATE BULK SAMPLE LOCATION
 - APPROXIMATE LIMITS OF RECOMMENDED PAVEMENT RECONSTRUCTION

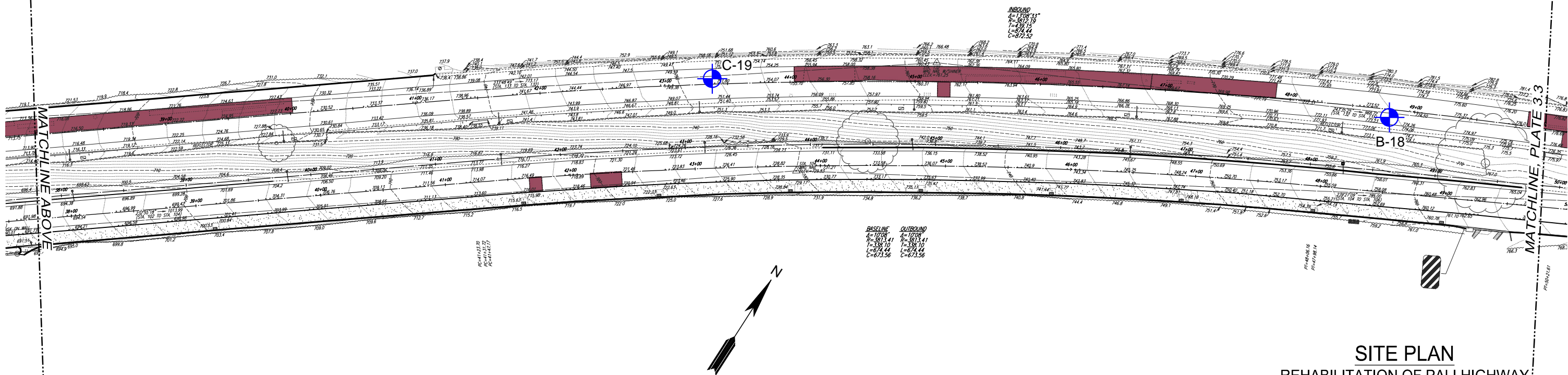
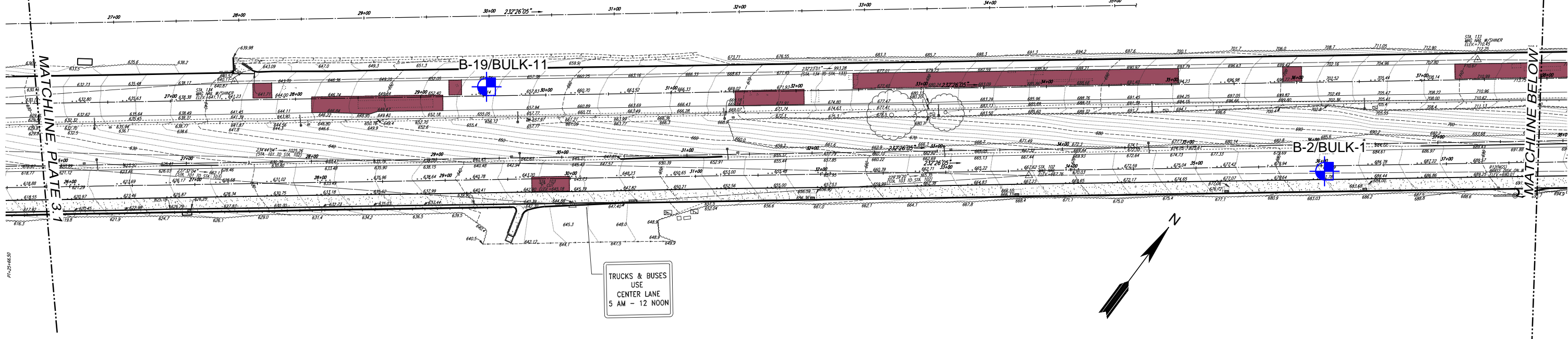
REFERENCE: TOPOGRAPHIC SURVEY MAP TRANSMITTED BY
WESLEY R. SEGAWA & ASSOCIATES, INC. ON FEBRUARY 6, 2014.



GEOLABS, INC.
Geotechnical Engineering

DATE FEBRUARY 2004	DRAWN BY JRP	PLATE 3.1
SCALE 1" = 80'	W.O. 6782-00(A)	

CAD User: JJP File Last Updated: February 20, 2014 10:47:04am Plot Date: February 20, 2014 - 11:08:31am
CAD: T:\Drafting\9904\Working\6782-00(A)\PaliHighwayPavementRehabilitation\6782-00(A) GenSheetPlans.dwg (SP-3.1)
Plotter: GEO-DWG-TO-PDF.pc3 PlotStyle: GEO-No-Dithering-Blue-Boring.dct



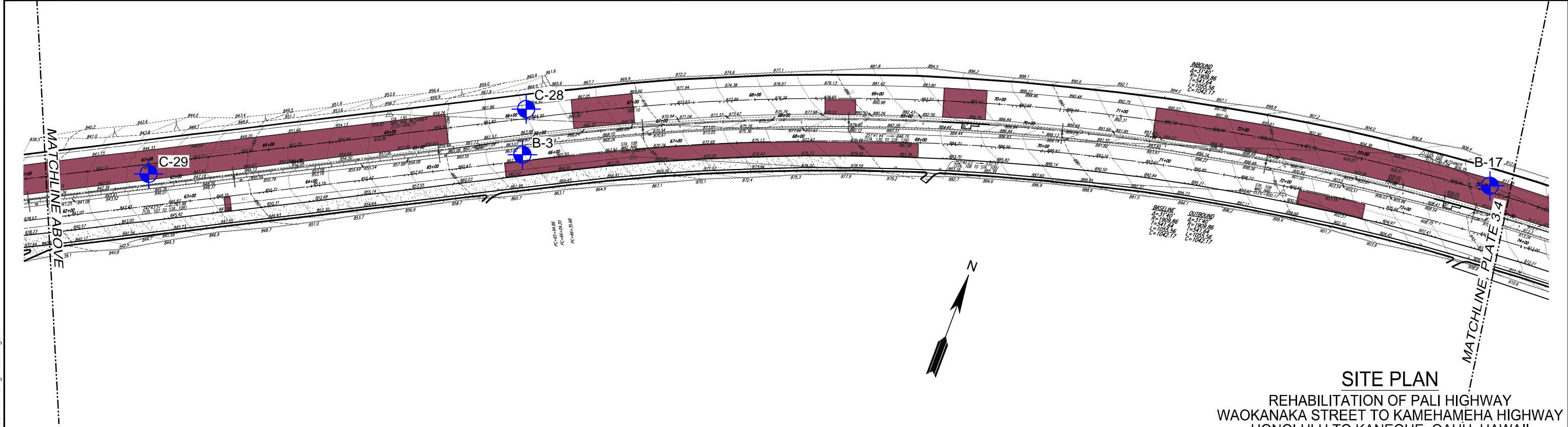
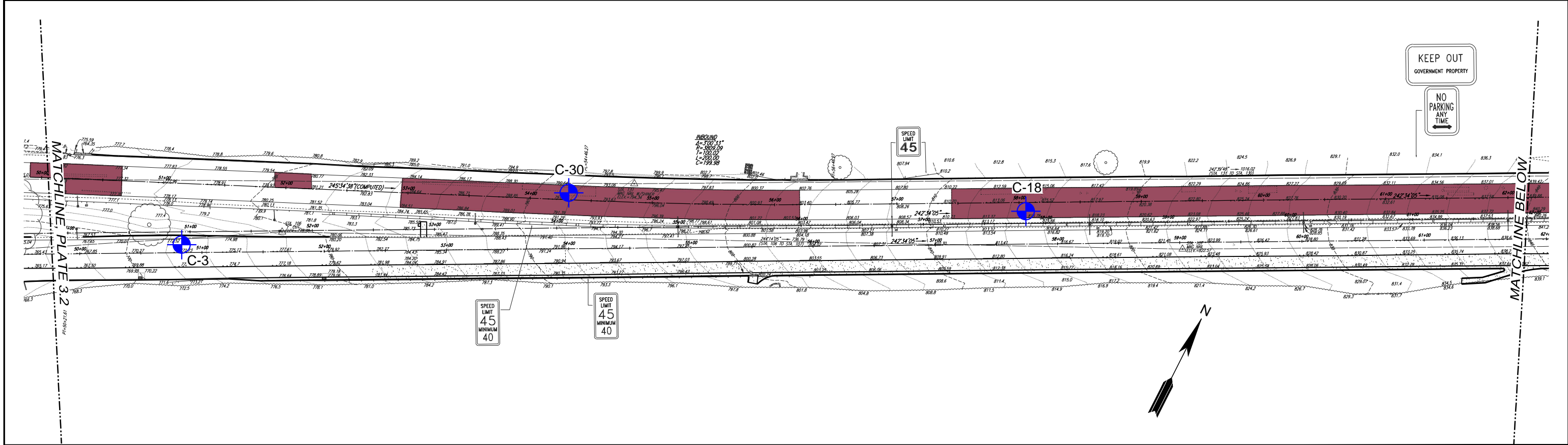
- LEGEND:**
- APPROXIMATE BORING LOCATION
 - APPROXIMATE BULK SAMPLE LOCATION
 - APPROXIMATE LIMITS OF RECOMMENDED PAVEMENT RECONSTRUCTION

REFERENCE: TOPOGRAPHIC SURVEY MAP TRANSMITTED BY
WESLEY R. SEGAWA & ASSOCIATES, INC. ON FEBRUARY 6, 2014.

SITE PLAN
REHABILITATION OF PALI HIGHWAY
WAKANAKA STREET TO KAMEHAMEHA HIGHWAY
HONOLULU TO KANELOE, OAHU, HAWAII

Geotechnical Engineering		
DATE FEBRUARY 2004	DRAWN BY JRP	PLATE
SCALE 1" = 80'	W.O.	3.2





- LEGEND:**
- APPROXIMATE BORING LOCATION
 - APPROXIMATE LIMITS OF RECOMMENDED PAVEMENT RECONSTRUCTION

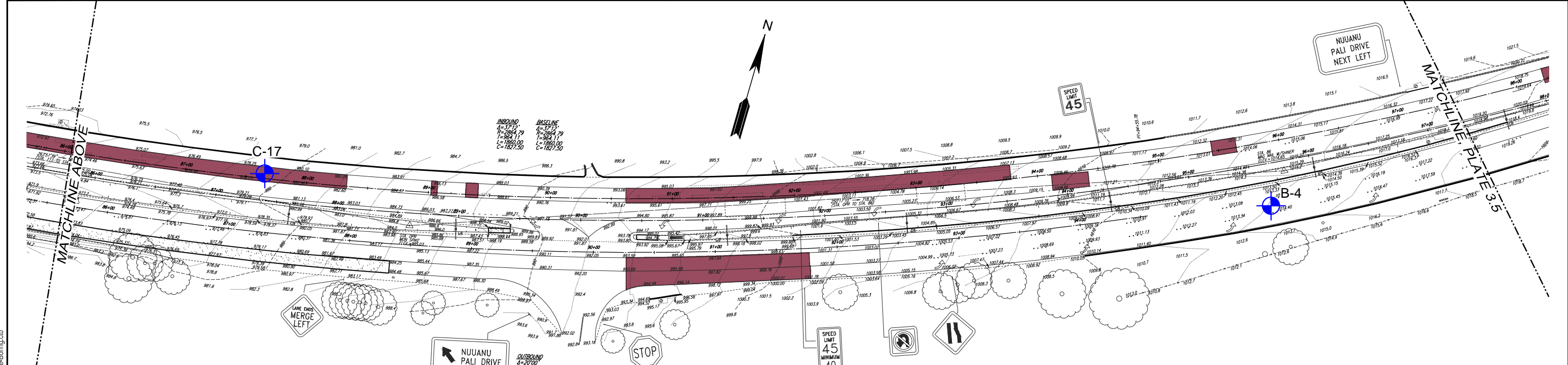
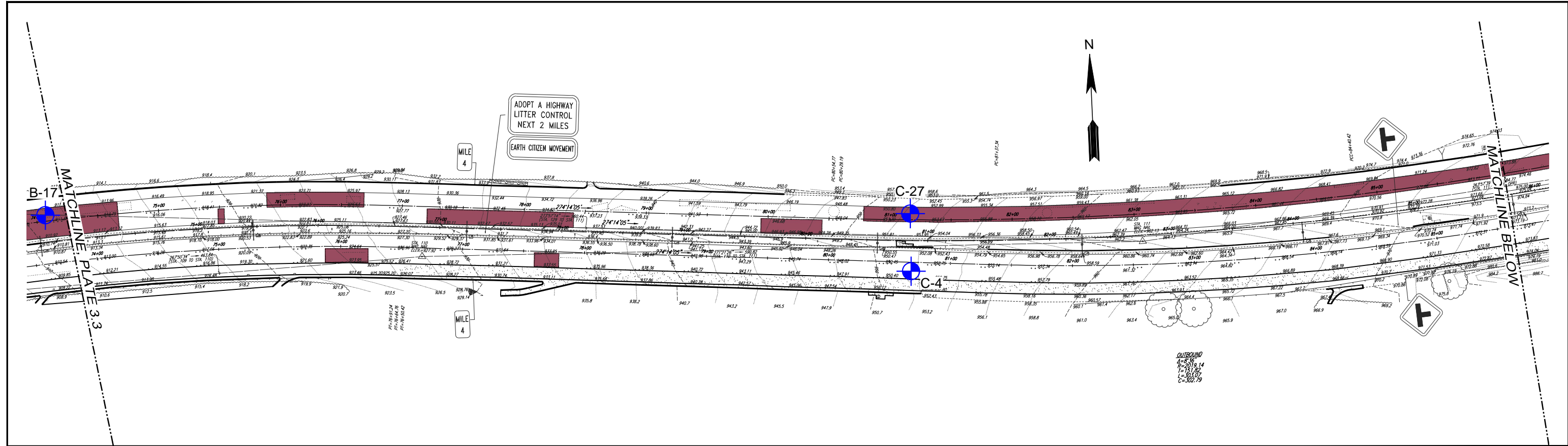
REFERENCE: TOPOGRAPHIC SURVEY MAP TRANSMITTED BY
WESLEY R. SEGAWA & ASSOCIATES, INC. ON FEBRUARY 6, 2014.



GEOLABS, INC.
Geotechnical Engineering

DATE FEBRUARY 2004	DRAWN BY JRP	PLATE 3.3
SCALE 1" = 80'	W.O. 6782-00(A)	

CAD User: JJP File Last Updated: February 20, 2014 10:47:04am Plot Date: February 20, 2014 - 11:09:12am
File: T:\Drafting\9904\Working\6782-00(A)\PaliHighwayPavementRehabilitation\6782-00(A)GenSheetPlans.dwg\SP-3.3
Plotter: GEO-DWG-TO-PDF.pc3 PlotStyle: GEO-No-Dithering-Blue-Boring.ctb



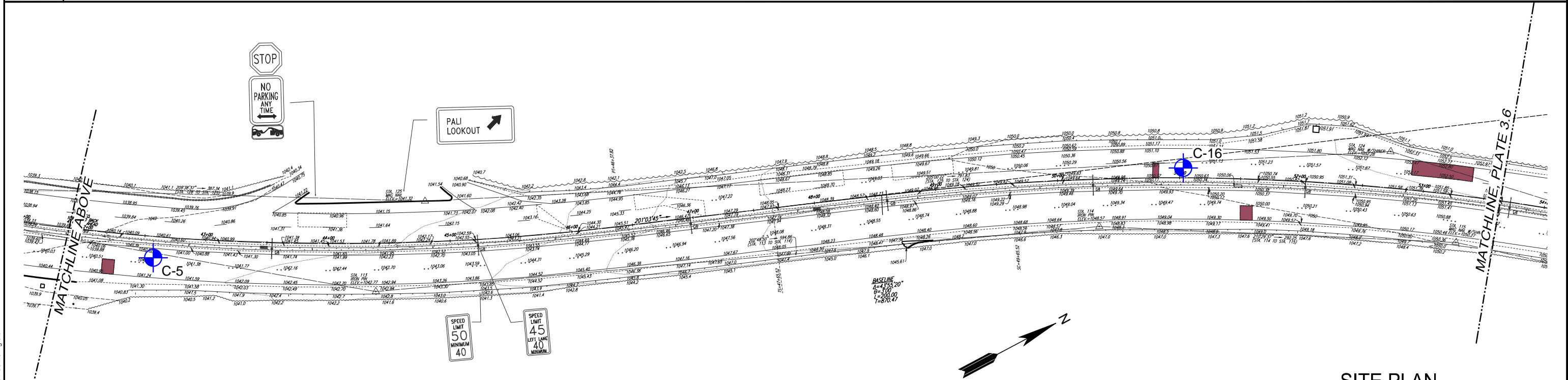
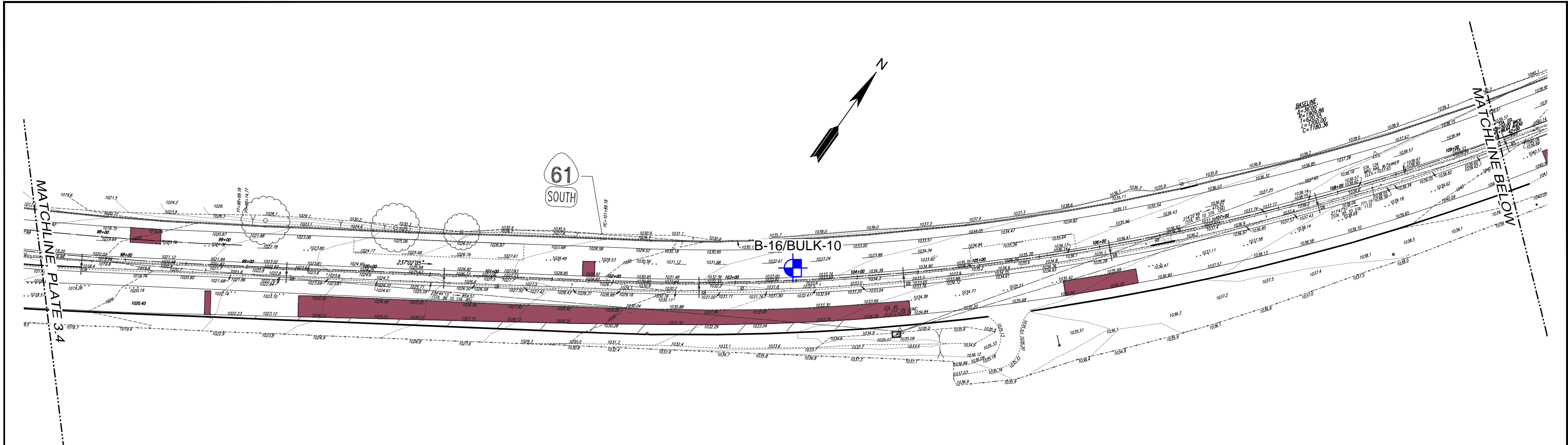
- LEGEND:**
- APPROXIMATE BORING LOCATION
 - APPROXIMATE LIMITS OF RECOMMENDED PAVEMENT RECONSTRUCTION

REFERENCE: TOPOGRAPHIC SURVEY MAP TRANSMITTED BY
WESLEY R. SEGAWA & ASSOCIATES, INC. ON FEBRUARY 6, 2014.

SITE PLAN
REHABILITATION OF PALI HIGHWAY
WAKANAKA STREET TO KAMEHAMEHA HIGHWAY
HONOLULU TO KANELOE, OAHU, HAWAII

Geotechnical Engineering		
DATE FEBRUARY 2004	DRAWN BY JRP	PLATE
SCALE 1" = 80'	W.O.	3.4





LEGEND:



APPROXIMATE BORING LOCATION



APPROXIMATE BULK SAMPLE LOCATION



APPROXIMATE LIMITS OF RECOMMENDED PAVEMENT RECONSTRUCTION

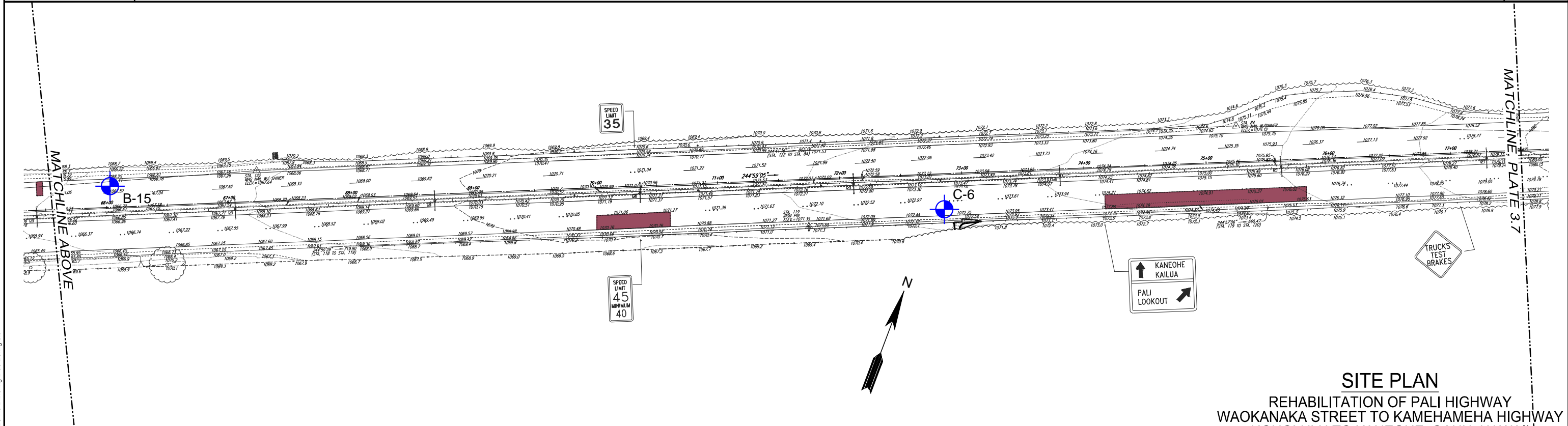
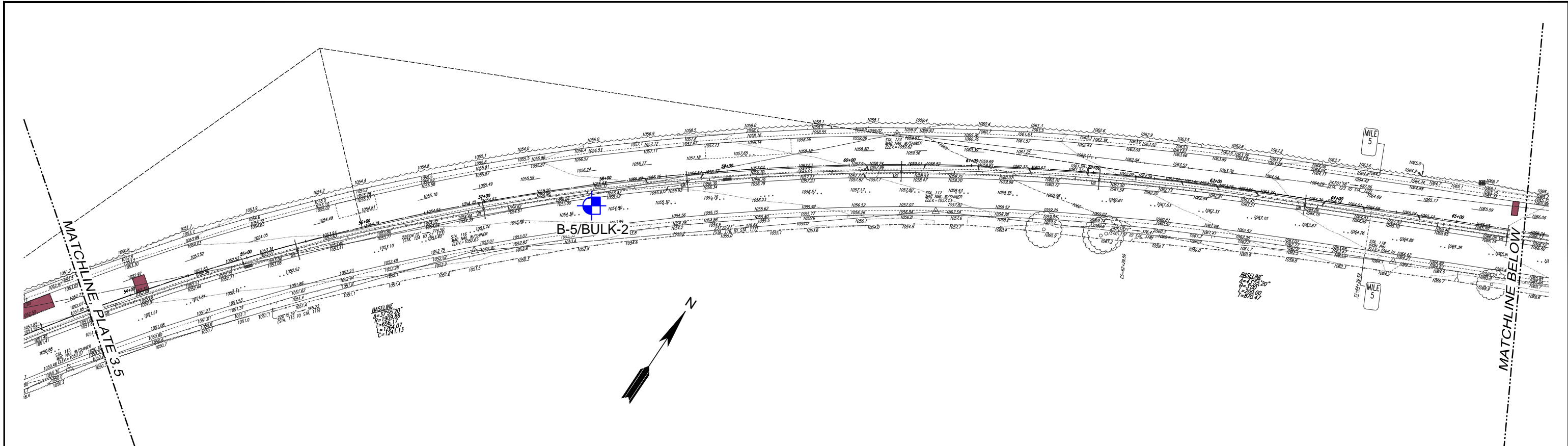
REFERENCE: TOPOGRAPHIC SURVEY MAP TRANSMITTED BY
WESLEY R. SEGAWA & ASSOCIATES, INC. ON FEBRUARY 6, 2014.





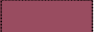
SITE PLAN

REHABILITATION OF PALI HIGHWAY
WAKANAKA STREET TO KAMEHAMEHA HIGHWAY
HONOLULU TO KANEHOE, OAHU, HAWAII

GEOLABS, INC.		
Geotechnical Engineering		
DATE	DRAWN BY	PLATE
FEBRUARY 2004	JRP	
SCALE	W.O.	
1" = 80'	6782-00(A)	3.5



LEGEND:

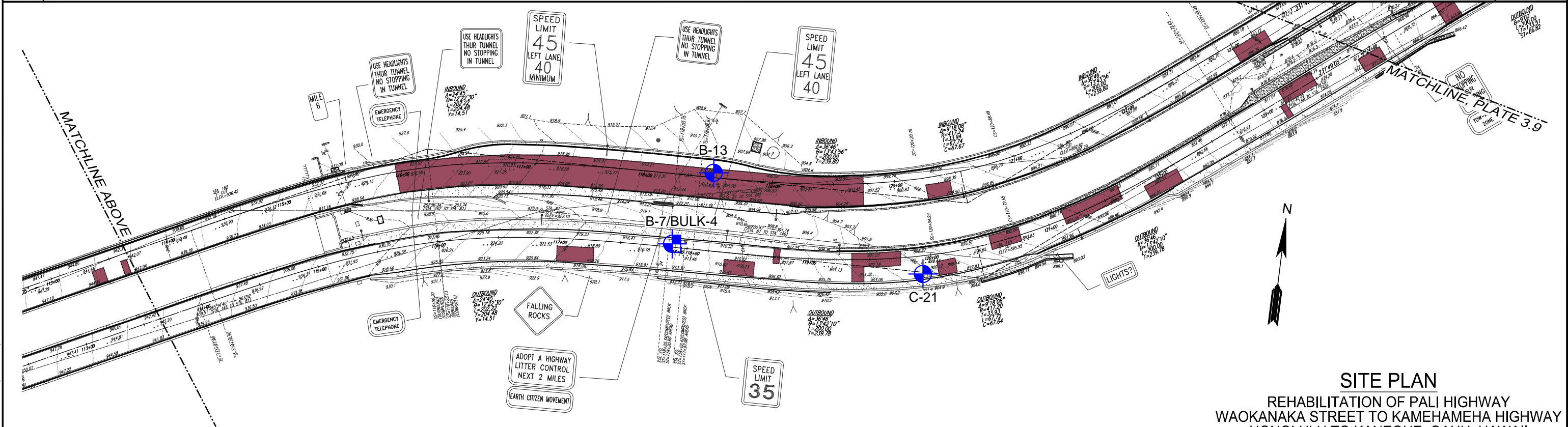
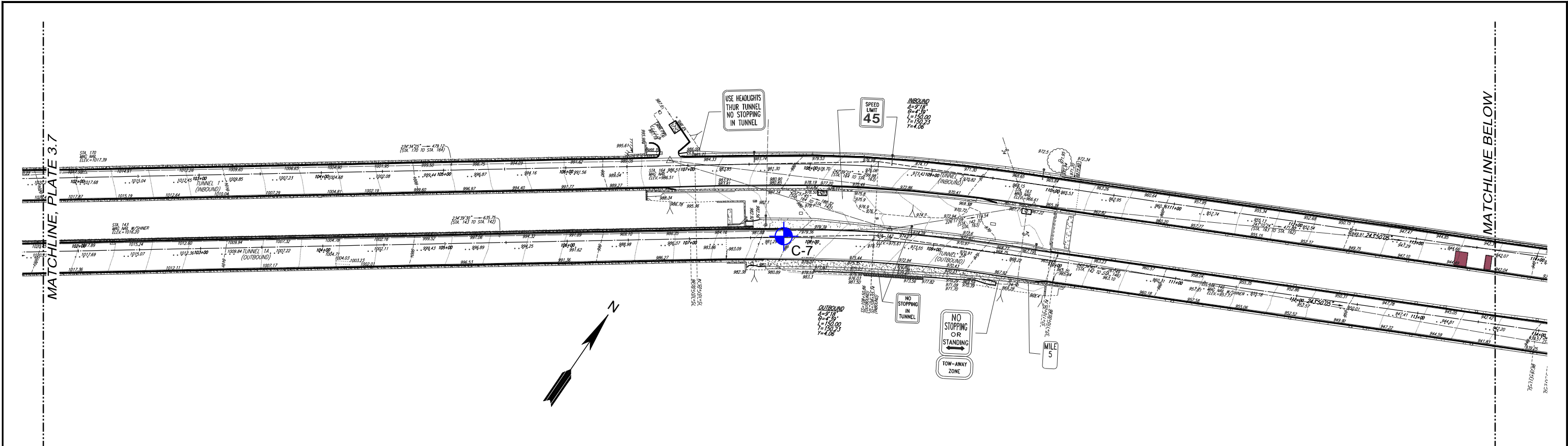
-  APPROXIMATE BORING LOCATION
-  APPROXIMATE BULK SAMPLE LOCATION
-  APPROXIMATE LIMITS OF RECOMMENDED PAVEMENT RECONSTRUCTION

REFERENCE: TOPOGRAPHIC SURVEY MAP TRANSMITTED BY
WESLEY R. SEGAWA & ASSOCIATES, INC. ON FEBRUARY 6, 2014.


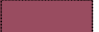


SITE PLAN		
REHABILITATION OF PALI HIGHWAY WAKANAKA STREET TO KAMEHAMEHA HIGHWAY HONOLULU TO KANEOHE, OAHU, HAWAII		
GEOLABS, INC.		
Geotechnical Engineering		
DATE	DRAWN BY	PLATE
FEBRUARY 2004	JRP	
SCALE	W.O.	
1" = 80'	6782-00(A)	3.6

CAD User: JJP File Last Updated: February 20, 2014 10:47:04am Plot Date: February 20, 2014 11:11:33am
File: T:\Drafting\9904\Working\6782-00(A)\PaliHighwayPavementRehabilitation\6782-00(A)GenSheetPlans.dwg(SP-3.8
Plotter: GEO-DWG-TO-PDF.pc3 PlotStyle: GEO-No-Dithering-Blue-Boring.ctb



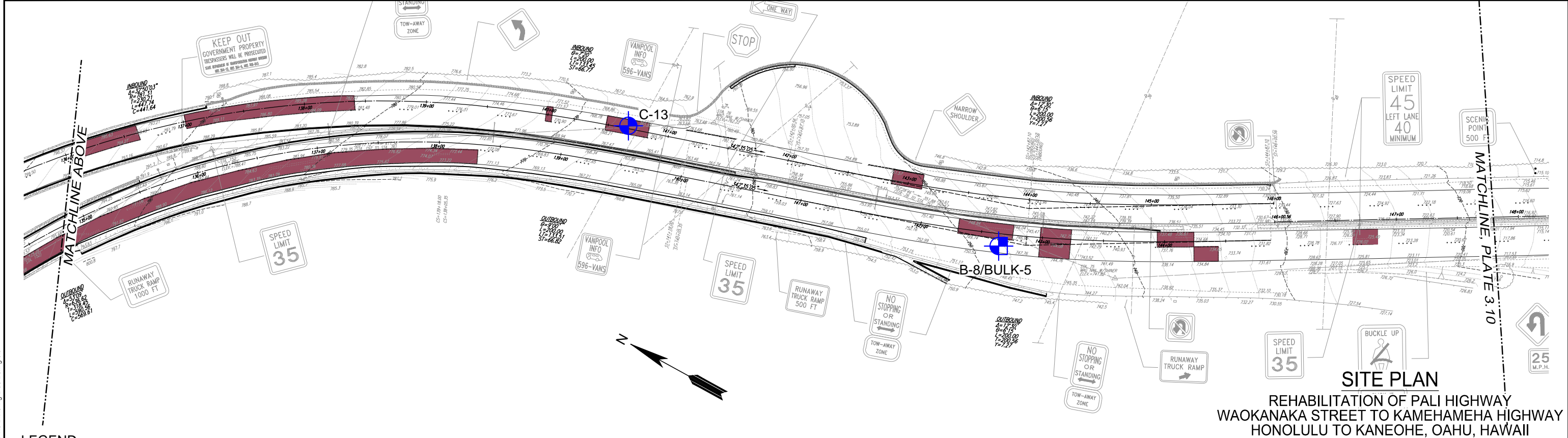
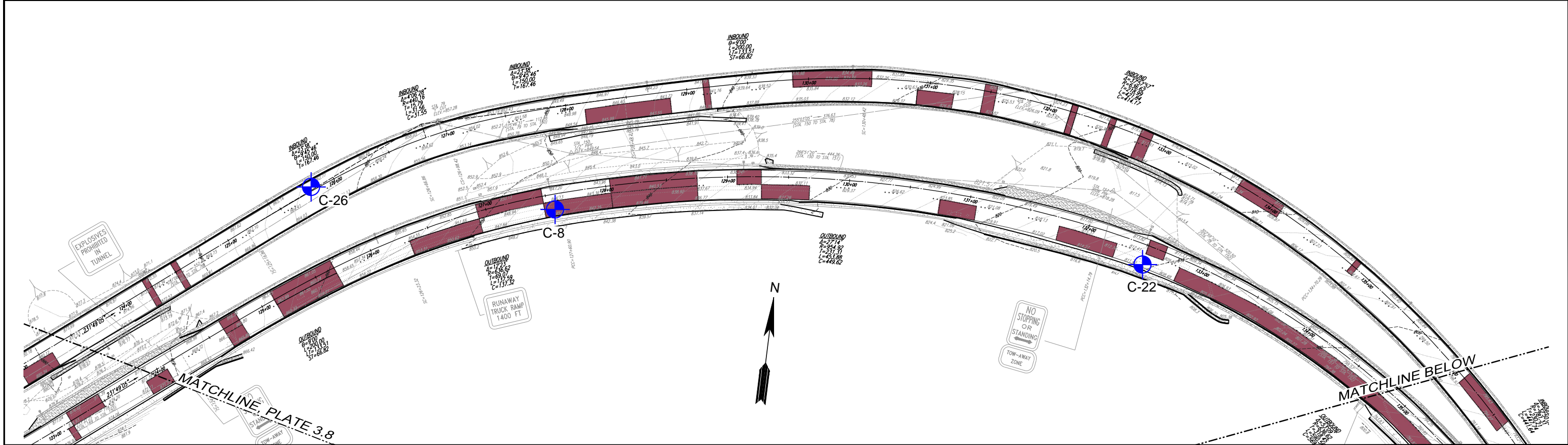
LEGEND:

-  APPROXIMATE BORING LOCATION
-  APPROXIMATE BULK SAMPLE LOCATION
-  APPROXIMATE LIMITS OF RECOMMENDED PAVEMENT RECONSTRUCTION

REFERENCE: TOPOGRAPHIC SURVEY MAP TRANSMITTED BY
WESLEY R. SEGAWA & ASSOCIATES, INC. ON FEBRUARY 6, 2014.




GEOLABS, INC.		
Geotechnical Engineering		
DATE FEBRUARY 2004	DRAWN BY JRP	PLATE 3.8
SCALE 1" = 80'	W.O. 6782-00(A)	



LEGEND:


 APPROXIMATE BORING LOCATION

 APPROXIMATE BULK SAMPLE LOCATION

 APPROXIMATE LIMITS OF RECOMMENDED PAVEMENT RECONSTRUCTION

REFERENCE: TOPOGRAPHIC SURVEY MAP TRANSMITTED BY
WESLEY R. SEGAWA & ASSOCIATES, INC. ON FEBRUARY 6, 2014.

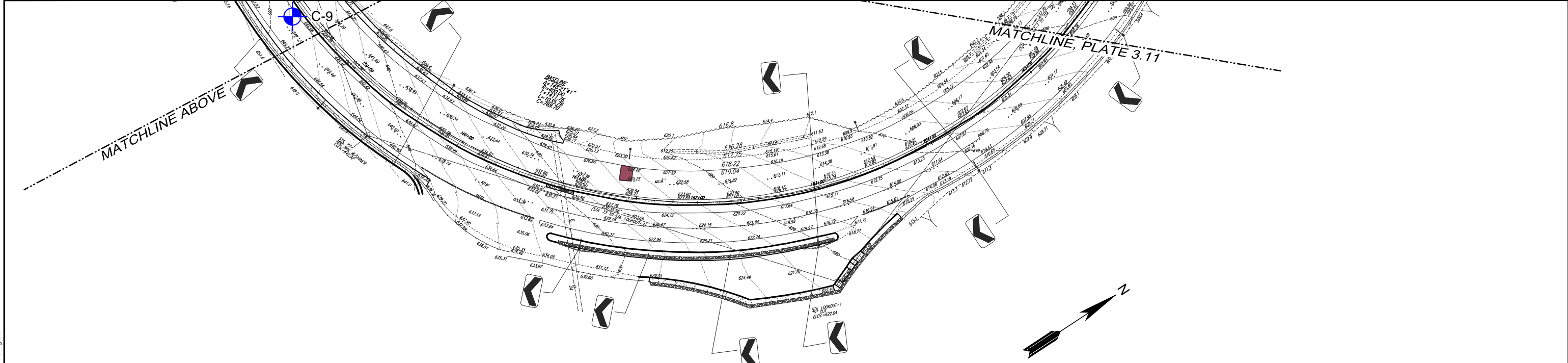
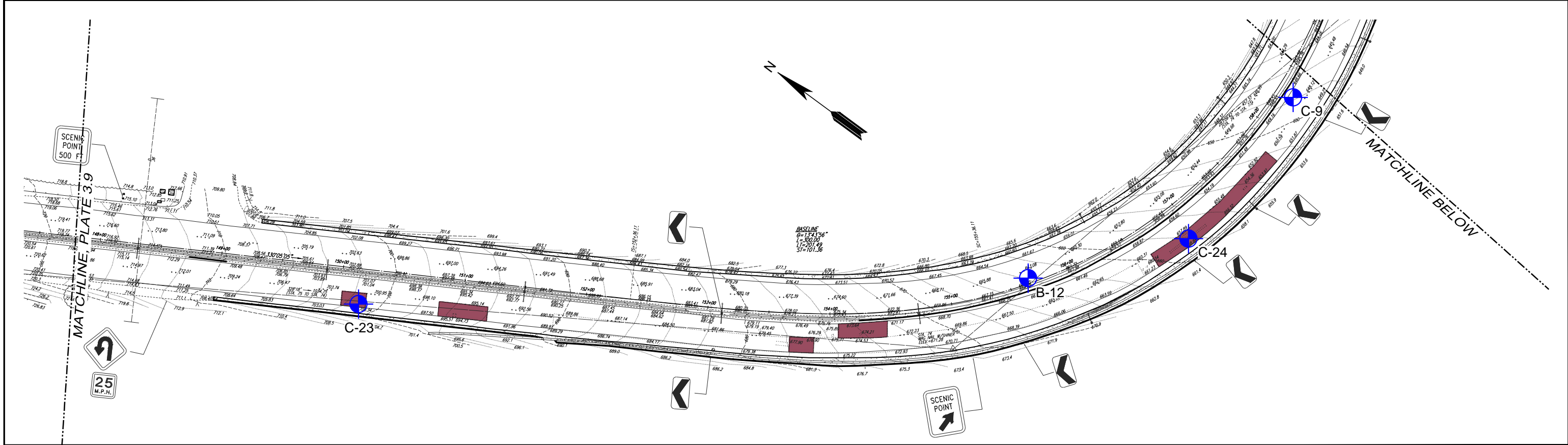






GEOLABS, INC.
Geotechnical Engineering


DATE FEBRUARY 2004	DRAWN BY JRP	PLATE 3.9
SCALE 1" = 80'	W.O. 6782-00(A)	

CAD User: JJP File Last Updated: February 02, 2015 10:09:53am Plot Date: February 02, 2015 - 10:13:11am
File: T:\Drafting\Working\6782-00(A)\PaliHighwayPavementRehabilitation\6782-00(A)GenSitePlans.dwg(SP-3.9
Plotter: DWG To PDF.pc3 Plotstyle: GEO-No-Dithering-Blue-Boring.ctb



- LEGEND:**
-  APPROXIMATE BORING LOCATION
 -  APPROXIMATE LIMITS OF RECOMMENDED PAVEMENT RECONSTRUCTION

REFERENCE: TOPOGRAPHIC SURVEY MAP TRANSMITTED BY
WESLEY R. SEGAWA & ASSOCIATES, INC. ON FEBRUARY 6, 2014.



DATE

FEBRUARY 2004

SCALE

1" = 80'

DRAWN BY

JRP

W.O.

6782-00(A)

PLATE

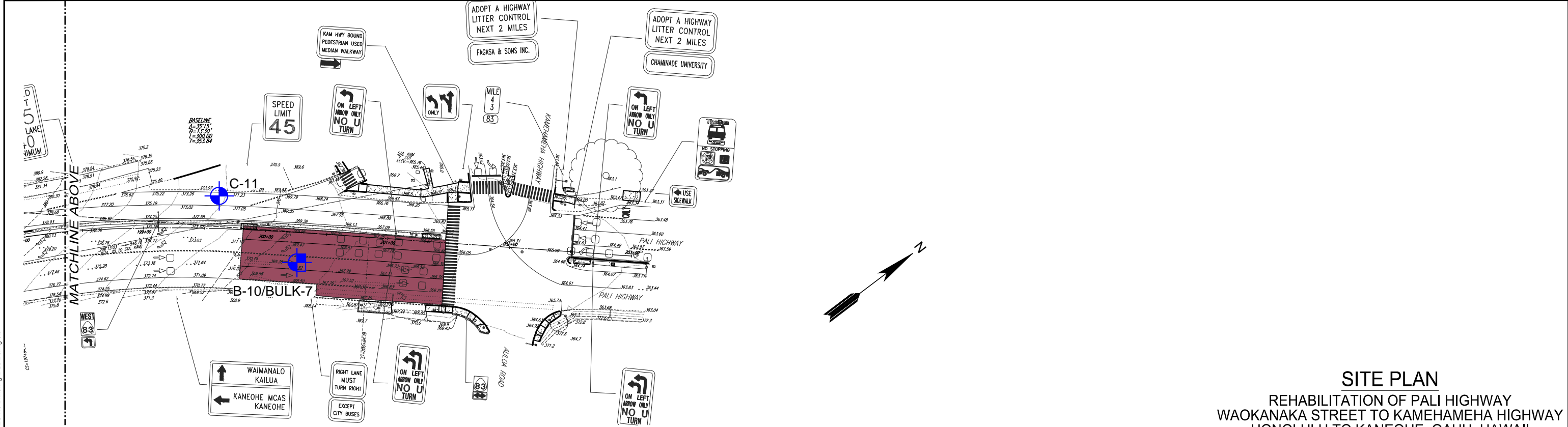
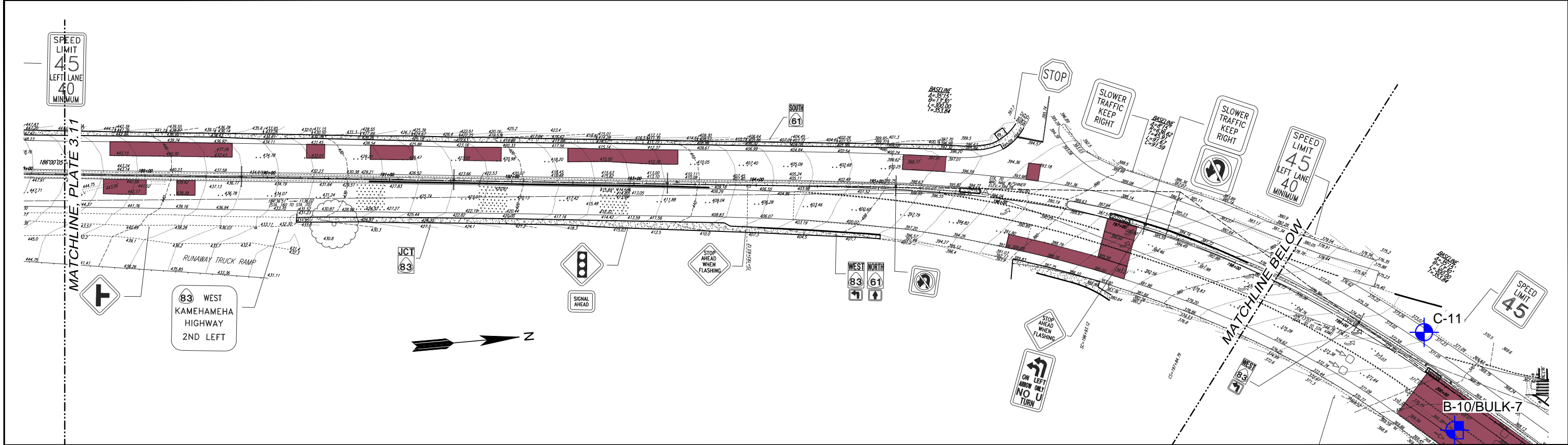
3.10

REHABILITATION OF PALI HIGHWAY
WAKANAKA STREET TO KAMEHAMEHA HIGHWAY
HONOLULU TO KANEOHE, OAHU, HAWAII

GEOLABS, INC.

Geotechnical Engineering

CAD User: JJP File Last Updated: February 20, 2014 10:47:04am Plot Date: February 20, 2014 - 11:12:09am
File: T:\Drafting\9904\Working\6782-00(A)\Pali Highway Pavement Rehabilitation\6782-00(A) GenSheet\Plate Plans.dwg (SP-3.10)
Plotter: GEO-DWG-TO-PDF.pc3 PlotStyle: GEO-No-Dithering-Blue-Boring.ctb



LEGEND:

 APPROXIMATE BORING LOCATION

 APPROXIMATE BULK SAMPLE LOCATION

 APPROXIMATE LIMITS OF RECOMMENDED PAVEMENT RECONSTRUCTION

REFERENCE: TOPOGRAPHIC SURVEY MAP TRANSMITTED BY
WESLEY R. SEGAWA & ASSOCIATES, INC. ON FEBRUARY 6, 2014.

SITE PLAN
REHABILITATION OF PALI HIGHWAY
WAKANAKA STREET TO KAMEHAMEHA HIGHWAY
HONOLULU TO KANEOHE, OAHU, HAWAII

GEOLABS, INC.		
Geotechnical Engineering		
DATE FEBRUARY 2004	DRAWN BY JRP	PLATE 3.12
SCALE 1" = 80'	W.O. 6782-00(A)	



CAD User: JJP File Last Updated: February 20, 2014 11:14:07am Plot Date: February 20, 2014 - 11:59:45am
File: I:\Drafting\9904\Working\6782-00(A)\PaliHighwayPavementRehabilitation\6782-00(A)GenSheetPlans.dwg(SP-3.12)
Plotter: GEO-DWG-TO-PDF.pc3 PlotStyle: GEO-No-Dithering-Blue-Boring.dbt