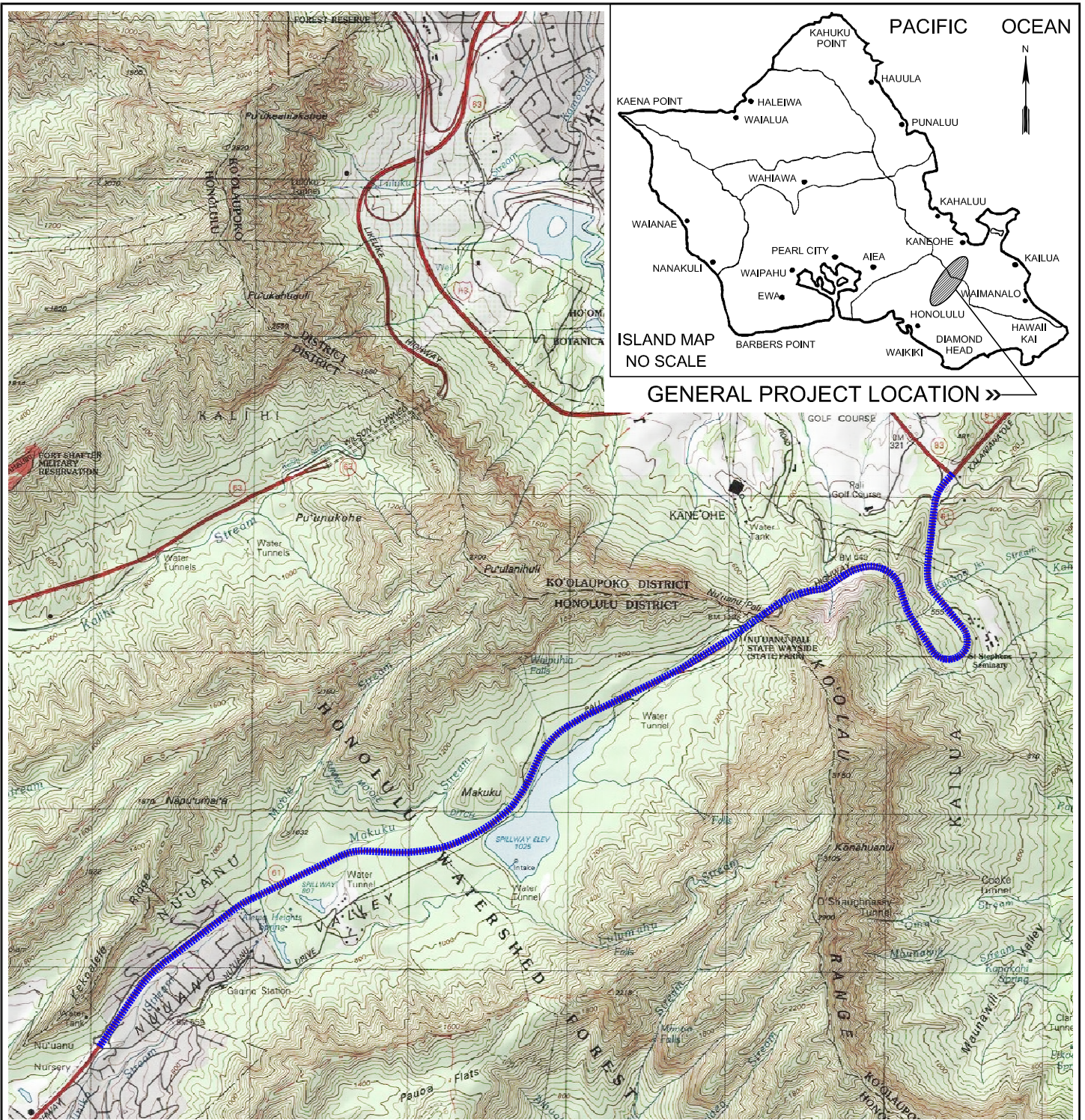


CAD User: JJP File Last Updated: February 20, 2014 11:51:35am Plot Date: February 20, 2014 - 11:54:52am
 File: T:\Draftering-9904\Working\6782-00\A\Pal Highway Rehabilitation\6782-00(A)PLM.dwg\PLM
 Plotter: CutePDF Writer Plostyle: GEO-No-Dithering-Blue-Boiling.cb

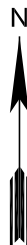


PROJECT LOCATION

PROJECT LOCATION MAP

REHABILITATION OF PALI HIGHWAY WAOKANAKA STREET TO KAMEHAMEHA HIGHWAY HONOLULU TO KANEOHE, OAHU, HAWAII

2000 1000 0 2000 FT.
 GRAPHIC SCALE



REFERENCE: MAP CREATED WITH TOPO!® ©2010 NATIONAL GEOGRAPHIC; ©2007 TELE ATLAS, REL. 1/2007.



GEOLABS, INC.

Geotechnical Engineering

DATE	DRAWN BY	PLATE
FEBRUARY 2014	JRP	
SCALE	W.O.	1
1" = 3,000'	6782-00(A)	