

**REHABILITATION OF PALI HIGHWAY
WAOKANAKA STREET TO KAMEHAMEHA HIGHWAY
HONOLULU TO KANEOHE, OAHU, HAWAII**



Photograph No. 1: Existing pavements with alligator cracking (fatigue) and minor block cracking.

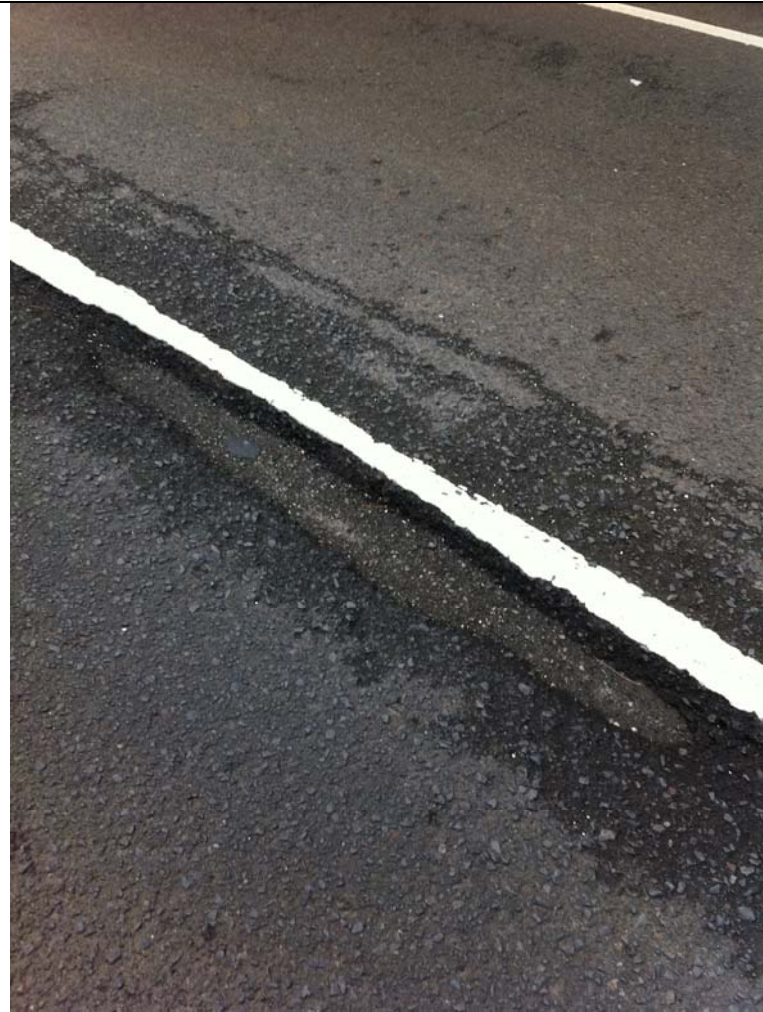


Photograph No. 2: Deteriorated pavements with asphalt and concrete patches.

REHABILITATION OF PALI HIGHWAY
WAOKANAKA STREET TO KAMEHAMEHA HIGHWAY
HONOLULU TO KANEOHE, OAHU, HAWAII



Photograph No. 3: Rutting and depression along wheel path.



Photograph No. 4: Delamination of asphalt concrete overlay.

REHABILITATION OF PALI HIGHWAY
WAOKANAKA STREET TO KAMEHAMEHA HIGHWAY
HONOLULU TO KANEOHE, OAHU, HAWAII



Photograph No. 5: Pothole exhibiting shallow subterranean seepage.



Photograph No. 6: Fatigue cracking along edge of travel lane and shoulder area.

**REHABILITATION OF PALI HIGHWAY
WAOKANAKA STREET TO KAMEHAMEHA HIGHWAY
HONOLULU TO KANEOHE, OAHU, HAWAII**



Photograph No. 7: Existing pavements exhibiting longitudinal cracking.

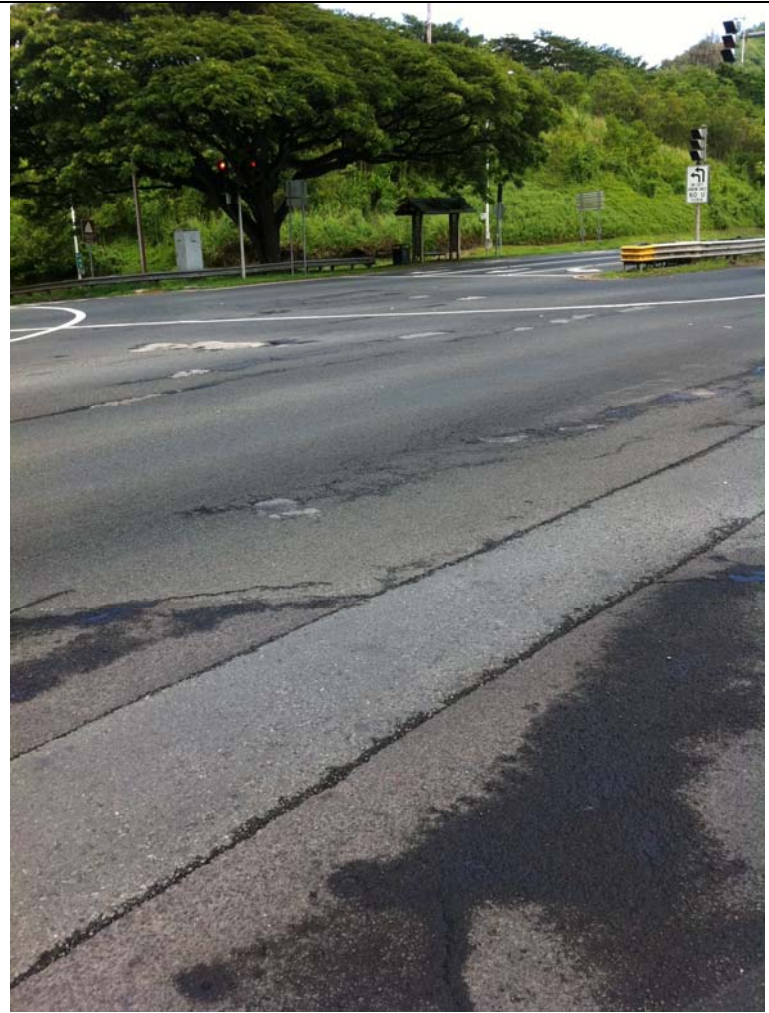


Photograph No. 8: Severely distressed pavements with rutting, shoving, and cracking.

**REHABILITATION OF PALI HIGHWAY
WAOKANAKA STREET TO KAMEHAMEHA HIGHWAY
HONOLULU TO KANEOHE, OAHU, HAWAII**



Photograph No. 9: Distressed pavements with multiple asphalt and concrete patches.



Photograph No. 7: Existing pavement condition at Pali and Kamehameha Highway Intersection.