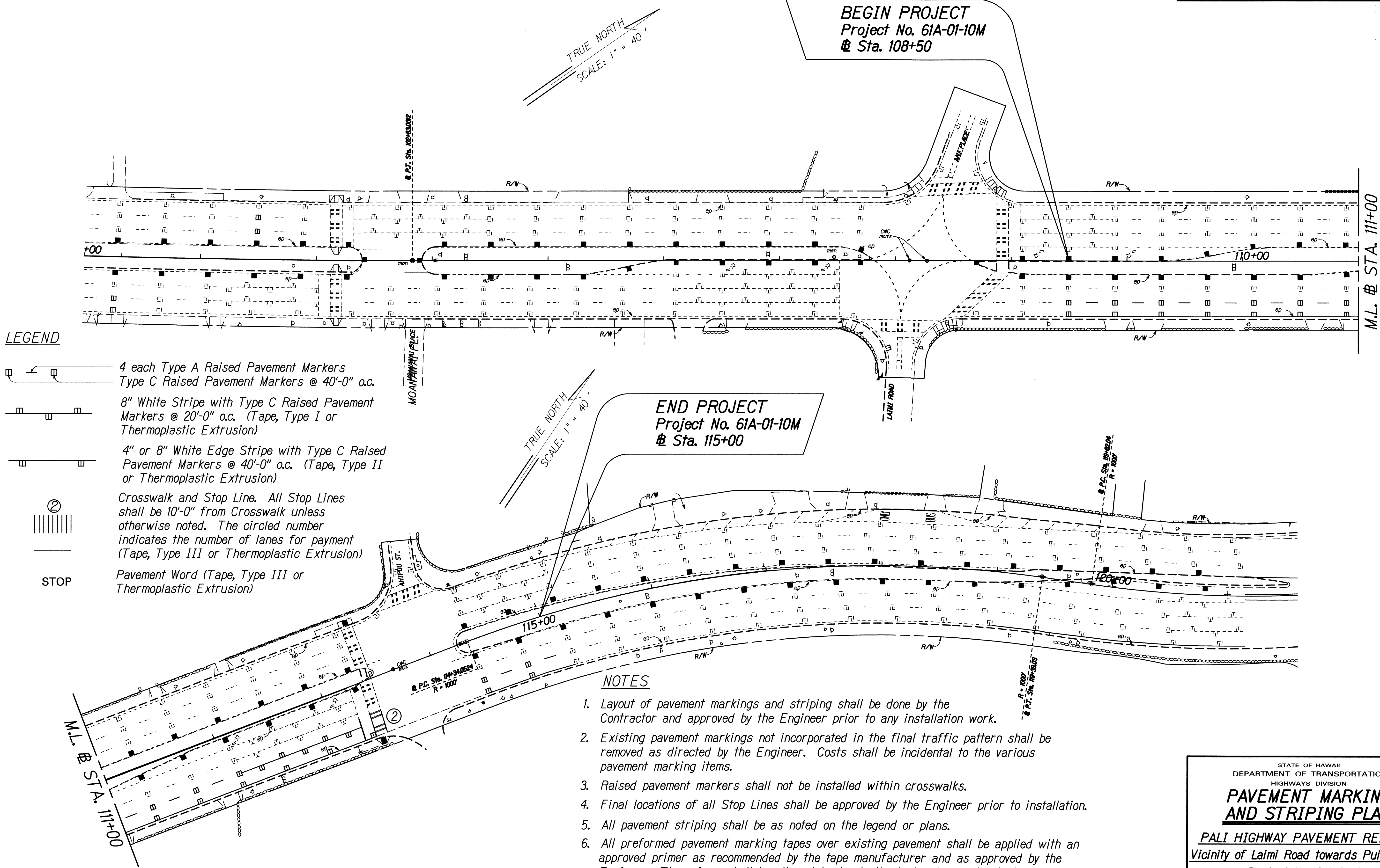


FED. ROAD DIST. NO.	STATE	PROJ. NO.	FISCAL YEAR	SHEET NO.	TOTAL SHEETS
HAWAII	HAW.	61A-01-10M	2010	8	9



LEGEND

- 4 each Type A Raised Pavement Markers
- Type C Raised Pavement Markers @ 40'-0" o.c.
- 8" White Stripe with Type C Raised Pavement Markers @ 20'-0" o.c. (Tape, Type I or Thermoplastic Extrusion)
- 4" or 8" White Edge Stripe with Type C Raised Pavement Markers @ 40'-0" o.c. (Tape, Type II or Thermoplastic Extrusion)
- Crosswalk and Stop Line. All Stop Lines shall be 10'-0" from Crosswalk unless otherwise noted. The circled number indicates the number of lanes for payment (Tape, Type III or Thermoplastic Extrusion)
- STOP
- Pavement Word (Tape, Type III or Thermoplastic Extrusion)

NOTES

1. Layout of pavement markings and striping shall be done by the Contractor and approved by the Engineer prior to any installation work.
2. Existing pavement markings not incorporated in the final traffic pattern shall be removed as directed by the Engineer. Costs shall be incidental to the various pavement marking items.
3. Raised pavement markers shall not be installed within crosswalks.
4. Final locations of all Stop Lines shall be approved by the Engineer prior to installation.
5. All pavement striping shall be as noted on the legend or plans.
6. All preformed pavement marking tapes over existing pavement shall be applied with an approved primer as recommended by the tape manufacturer and as approved by the Engineer. The primer shall be allowed to dry to the tacky stage prior to tape application.
7. All new pavement markings shall tie in with existing pavement markings.

SURVEY PLOTTED BY	DATE
DRAWN BY	
DESIGNED BY	
NOTED BY	
CHECKED BY	

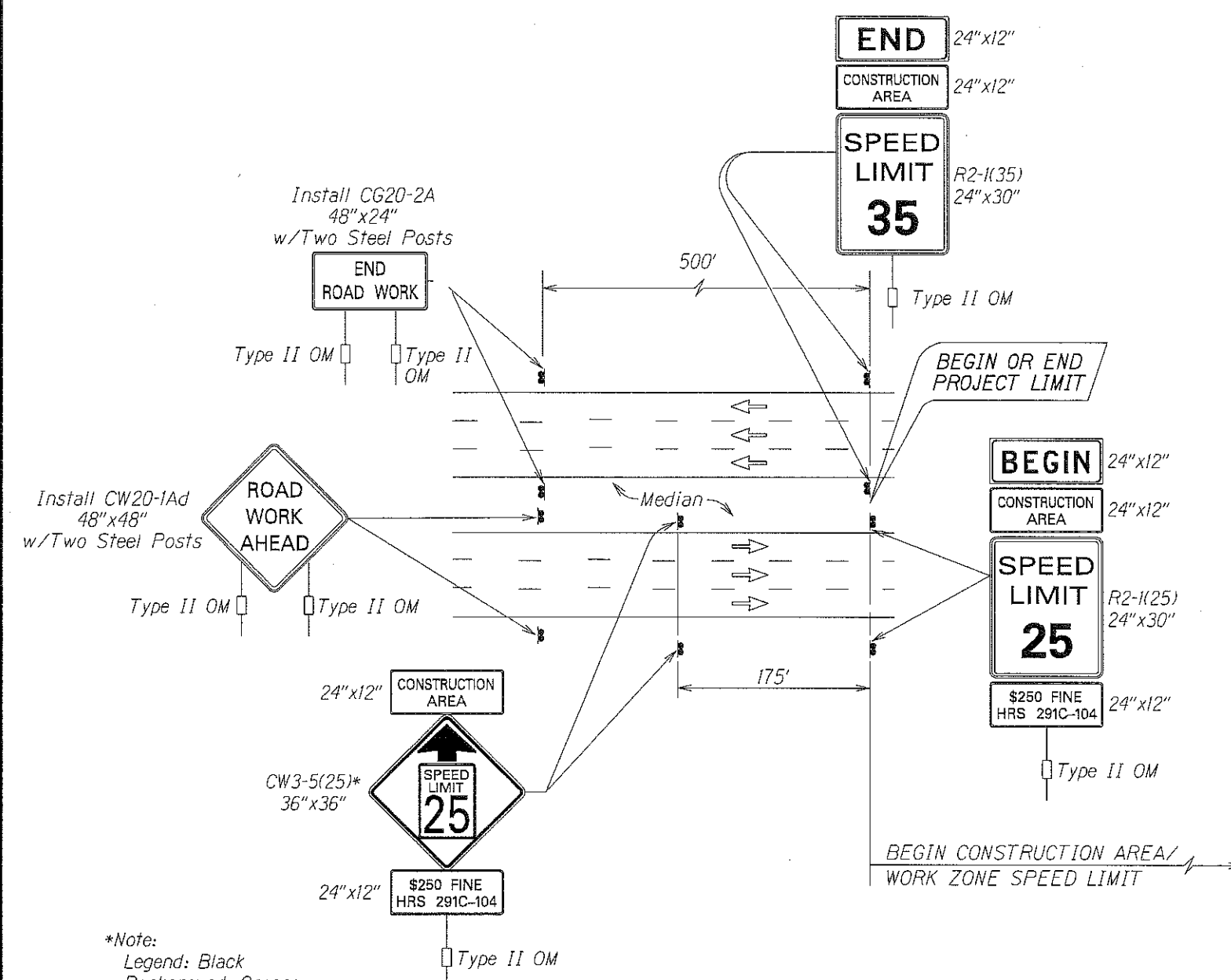
STATE OF HAWAII
DEPARTMENT OF TRANSPORTATION
HIGHWAYS DIVISION

**PAVEMENT MARKING
AND STRIPING PLAN**

PALI HIGHWAY PAVEMENT REPAIRS
Vicinity of Laimi Road towards Puiwa Road
Project No. 61A-01-10M
Scale: 1" = 40' Date: April, 2010

SHEET No. 1 OF 1 SHEETS

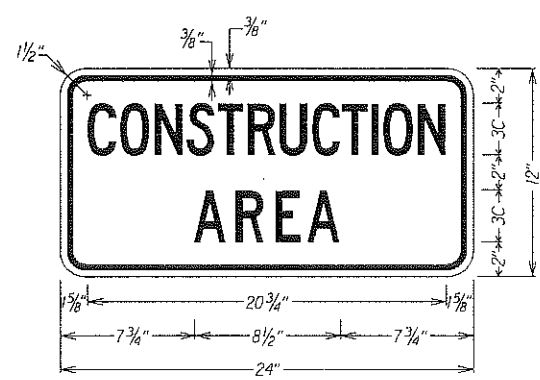
FED. ROAD DIST. NO.	STATE	PROJ. NO.	FISCAL YEAR	SHEET NO.	TOTAL SHEETS
HAWAII	HAW.	61A-01-10M	2010	ADD.9 S-1	9



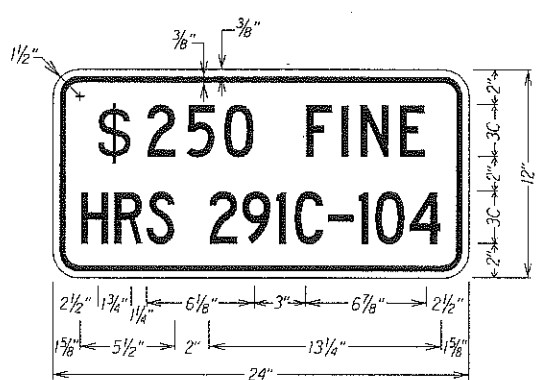
Work Zone Notes:

1. This Work Zone Sign Plan is intended for use on long-term stationary work zones/construction phases (3 days or more). All work zones or construction phases less than 3 days duration will use Traffic Control Plans shown in Section 645 of the Special Provisions.
2. All existing regulatory speed limit signs with posts within the work zone/project limits shall be removed and replaced with work zone speed limit sign assemblies (R2-1(25) and CW3-5(25) with "CONSTRUCTION AREA" and "\$250 FINE HRS 291C-104" Supplemental Signs).
3. Construction sign assemblies shall be installed on both the approaching and trailing ends of each work zone as shown on this plan.
4. Each construction warning sign shall have a minimum of two (2) Type II OM. Each work zone speed limit assembly shall have a minimum of one (1) Type II OM. Installation of each Type II OM shall be considered incidental to Item No. 645.0100 - Traffic Control.
5. Upon the completion of all physical work or as directed by the Engineer, all construction signs and work zone speed limit assemblies shall be removed. All speed limit signs and posts that were existing at the start of the project within the work zone/project limits shall be restored back to their original locations and configurations.
6. Placement of construction signs shall not obstruct the path of pedestrians and bicyclists.
7. The removal and restoration of existing regulatory speed limit signs with new posts along with the installation, maintenance and removal of work zone speed limit sign assemblies shall be considered incidental to Item No. 645.0100 - Traffic Control. Sign covers shall be commercially manufactured and HDOT approved. Sign covers shall not allow any portion of the sign being covered to be visible. If the sign has more than one side, cover shall completely cover each side. "Homemade" or "field made" covers shall not be used or accepted.

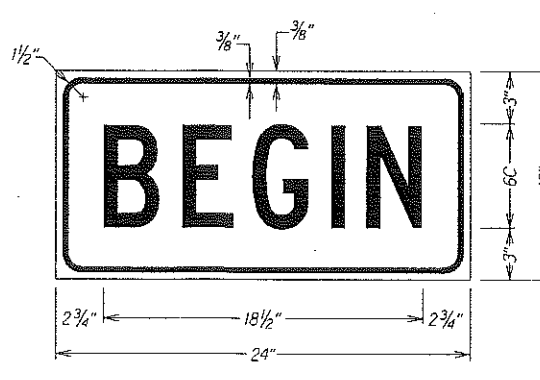
TYPICAL DETAIL FOR CONSTRUCTION SIGNS
ON MULTILANE DIVIDED LOW SPEED HIGHWAY



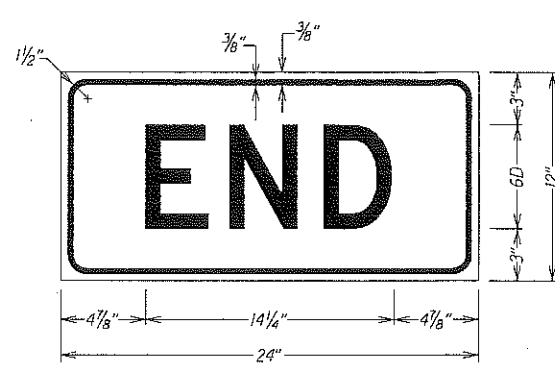
LEGEND: BLACK
BACKGROUND: ORANGE



LEGEND: BLACK
BACKGROUND: WHITE



LEGEND: BLACK
BACKGROUND: ORANGE



LEGEND: BLACK
BACKGROUND: ORANGE

6/23/10	Added Sheet
DATE	REVISION
STATE OF HAWAII DEPARTMENT OF TRANSPORTATION HIGHWAYS DIVISION LOW SPEED DIVIDED HIGHWAY WORK ZONE SIGNING PLAN, NOTES&DETAILS PALI HIGHWAY PAVEMENT REPAIRS Vicinity of Laimi Rd. towards Puhi Rd. Project No. 61A-01-10M Not To Scale Date: June, 2010	
SHEET No. 1 OF 1 SHEETS	