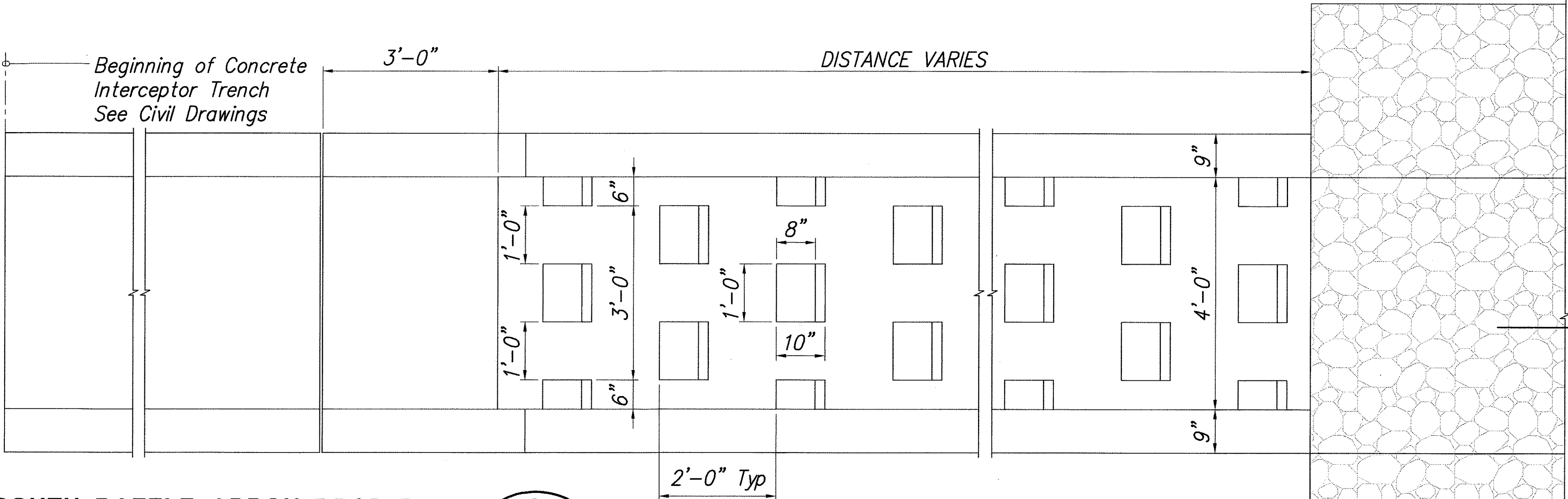


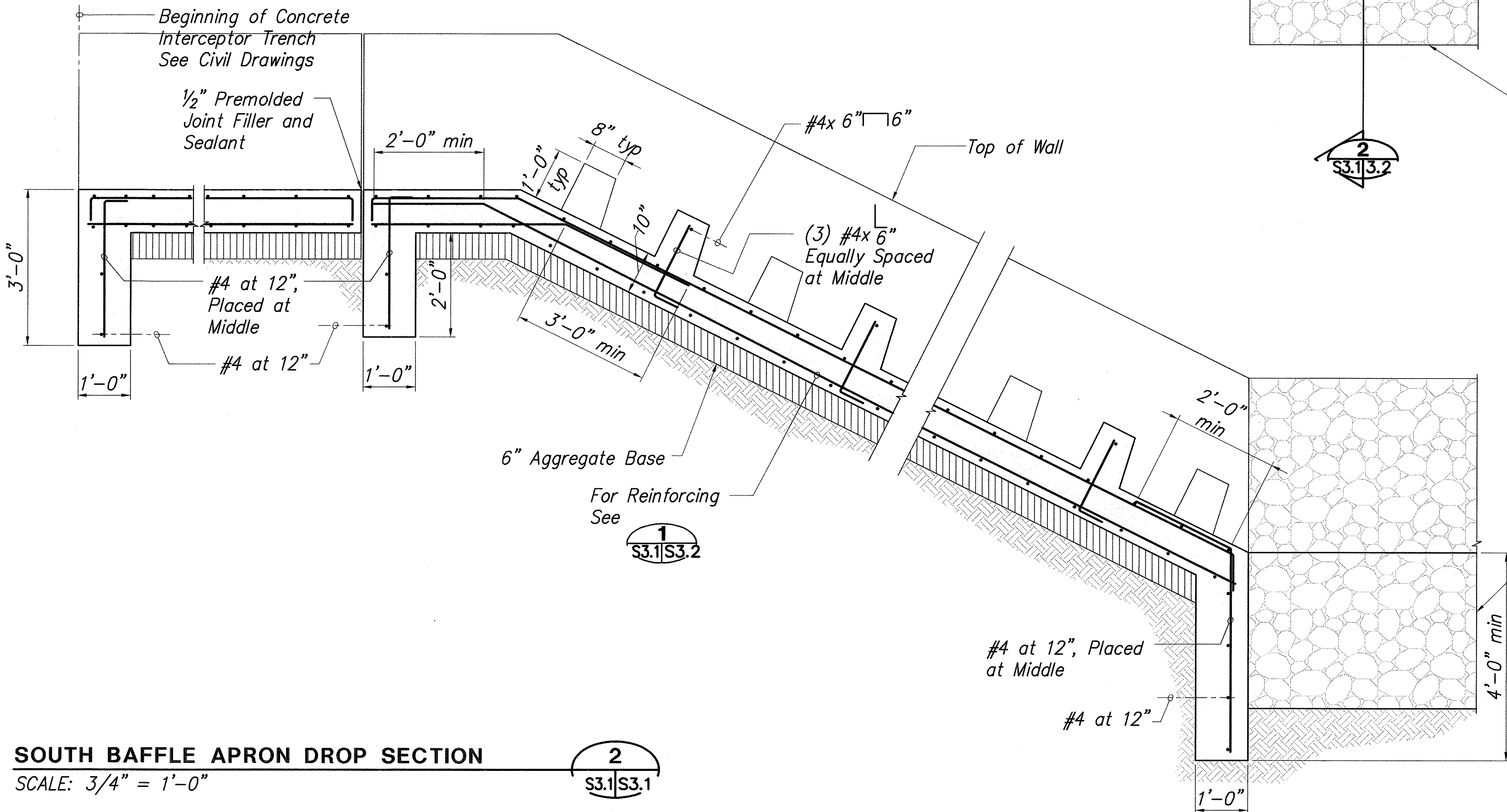
FED. ROAD DIST. NO.	STATE	PROJ. NO.	FISCAL YEAR	SHEET NO.	TOTAL SHEETS
OAHU	HAWAII	61D-02-06	2006	42	57



SOUTH BAFFLE APRON DROP PLAN

SCALE: 3/4" = 1'-0"

1
S3.1|S3.1



SOUTH BAFFLE APRON DROP SECTION

SCALE: 3/4" = 1'-0"

2
S3.1|S3.1

2
S3.1|S3.1

2
S3.1|S3.2

Grouted Riprap
See Civil Drawings for Extent

Grouted Riprap

ORIGINAL PLAN	SURVEY PLOTTED BY	DATE
NOTE BOOK	DRAWN BY	
	DESIGNED BY	
	CHECKED BY	



8-06-06
EXPIRATION DATE OF THE LICENSE 4/30/2008
THIS WORK WAS PREPARED BY ME OR UNDER MY SUPERVISION

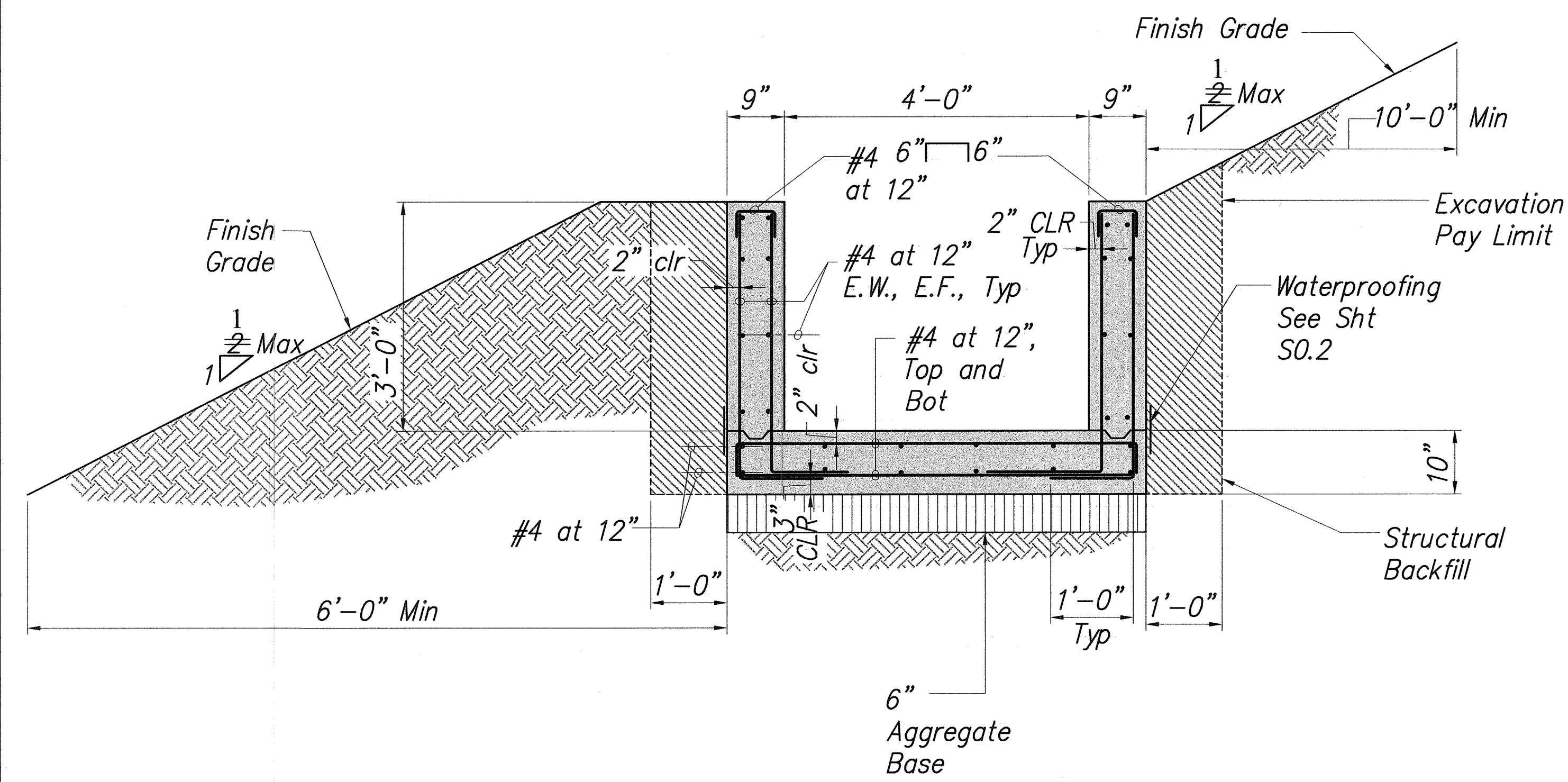
STATE OF HAWAII
DEPARTMENT OF TRANSPORTATION
HIGHWAYS DIVISION

SOUTH BAFFLE APRON

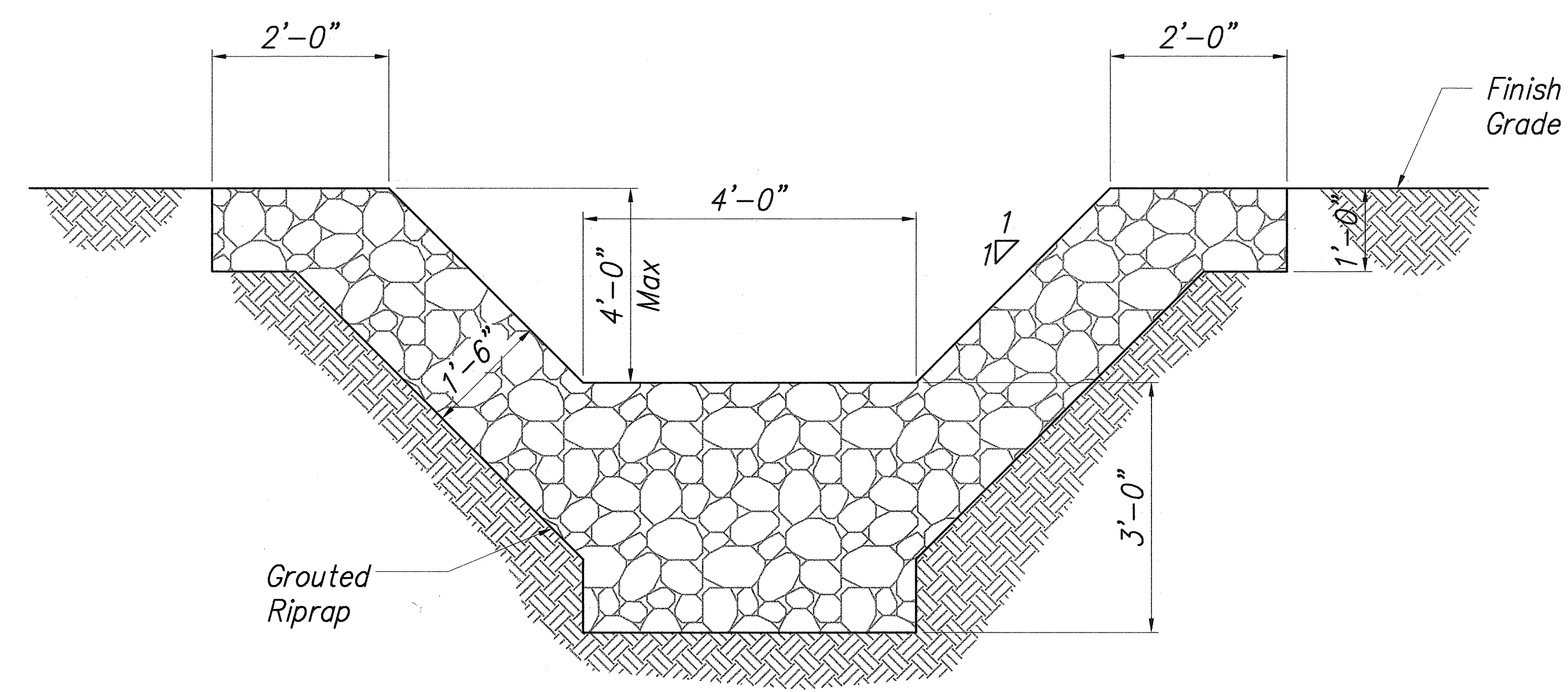
KAILUA ROAD PERMANENT
ROCKFALL AND LANDSLIDE MITIGATION
PROJECT NO. 61D-02-06

Scale: As Noted Date: Aug 2006
SHEET No. S3.1 OF 8 SHEETS

FED. ROAD DIST. NO.	STATE	PROJ. NO.	FISCAL YEAR	SHEET NO.	TOTAL SHEETS
OAHU	HAWAII	61D-02-06	2006	43	57



TYPICAL SOUTH CONCRETE INTERCEPTOR TRENCH
SCALE: 3/4" = 1'-0"



TYPICAL SOUTH RIPRAP SECTION
SCALE: 3/4" = 1'-0"

SURVEY PLOTTED BY	DATE
DRAWN BY	
CHECKED BY	
DESIGNED BY	
QUANTITIES BY	
CHECKED BY	
ORIGINAL PLAN	
NOTE BOOK	
No.	

LEGEND FOR AS-BUILT POSTINGS

~~~~~ Squiggly line for as-built deletion

±00.00 Double line for as-built deletion

Roadway Text for as-built posting

STATE OF HAWAII  
DEPARTMENT OF TRANSPORTATION  
HIGHWAYS DIVISION

**SOUTH BAFFLE APRON SECTIONS**

KAILUA ROAD PERMANENT  
ROCKFALL AND LANDSLIDE MITIGATION  
PROJECT NO. 61D-02-06

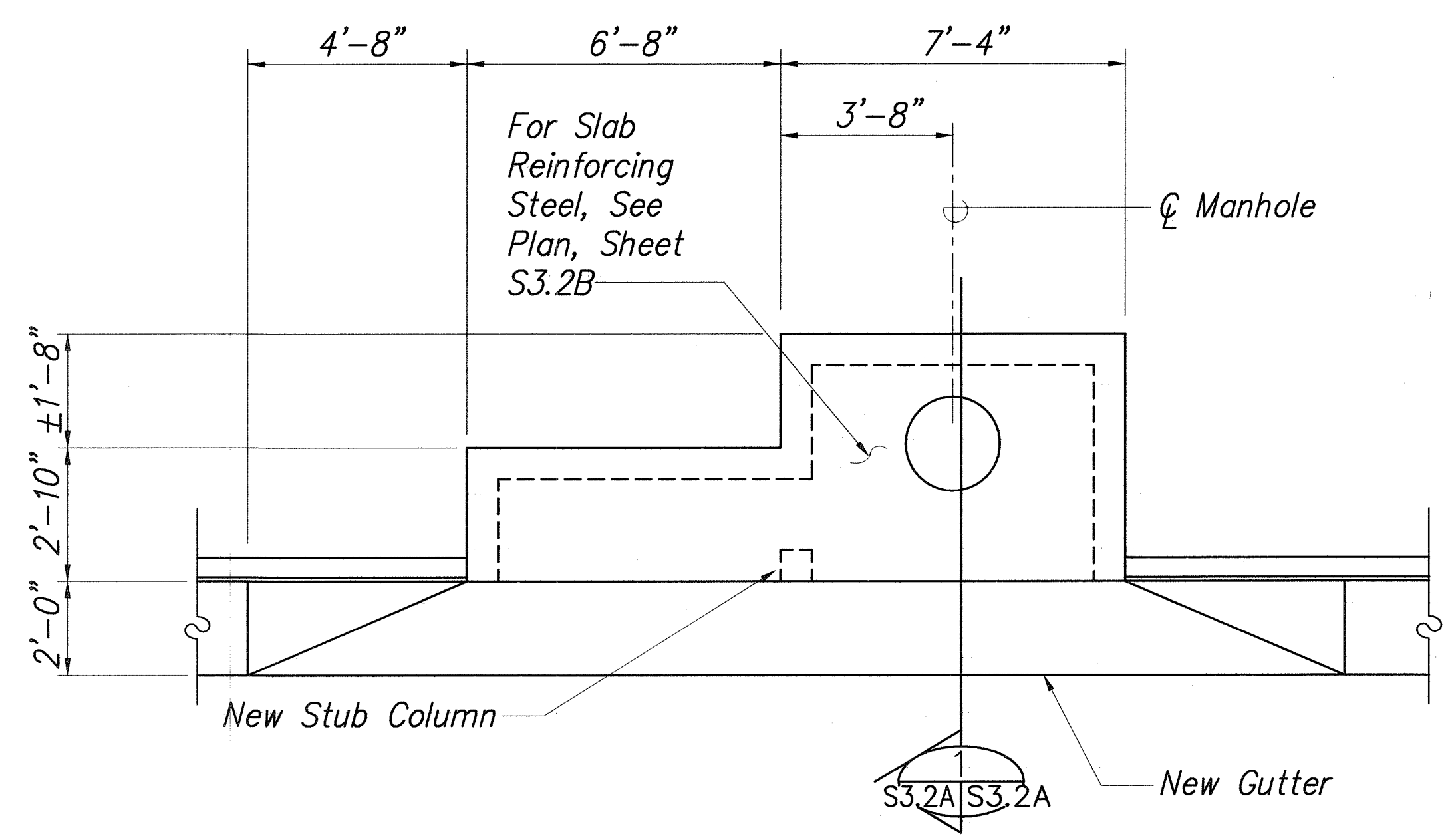
Scale: As Noted Date: Aug 2006

EXPIRATION DATE OF THE LICENSE 4/30/2008  
THIS WORK WAS PREPARED BY  
ME OR UNDER MY SUPERVISION

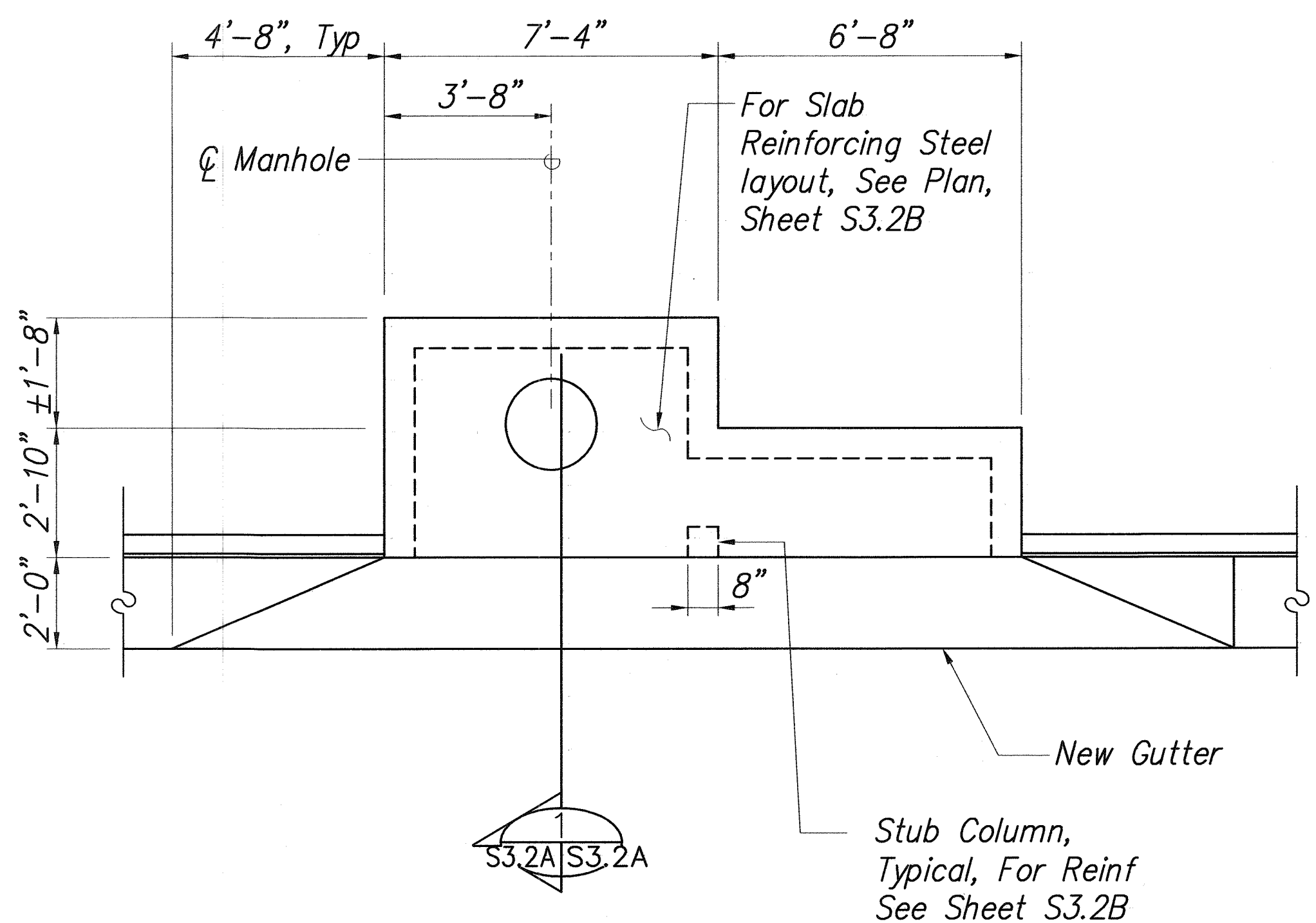
SHEET No. S3.2 OF 8 SHEETS

"AS-BUILT"

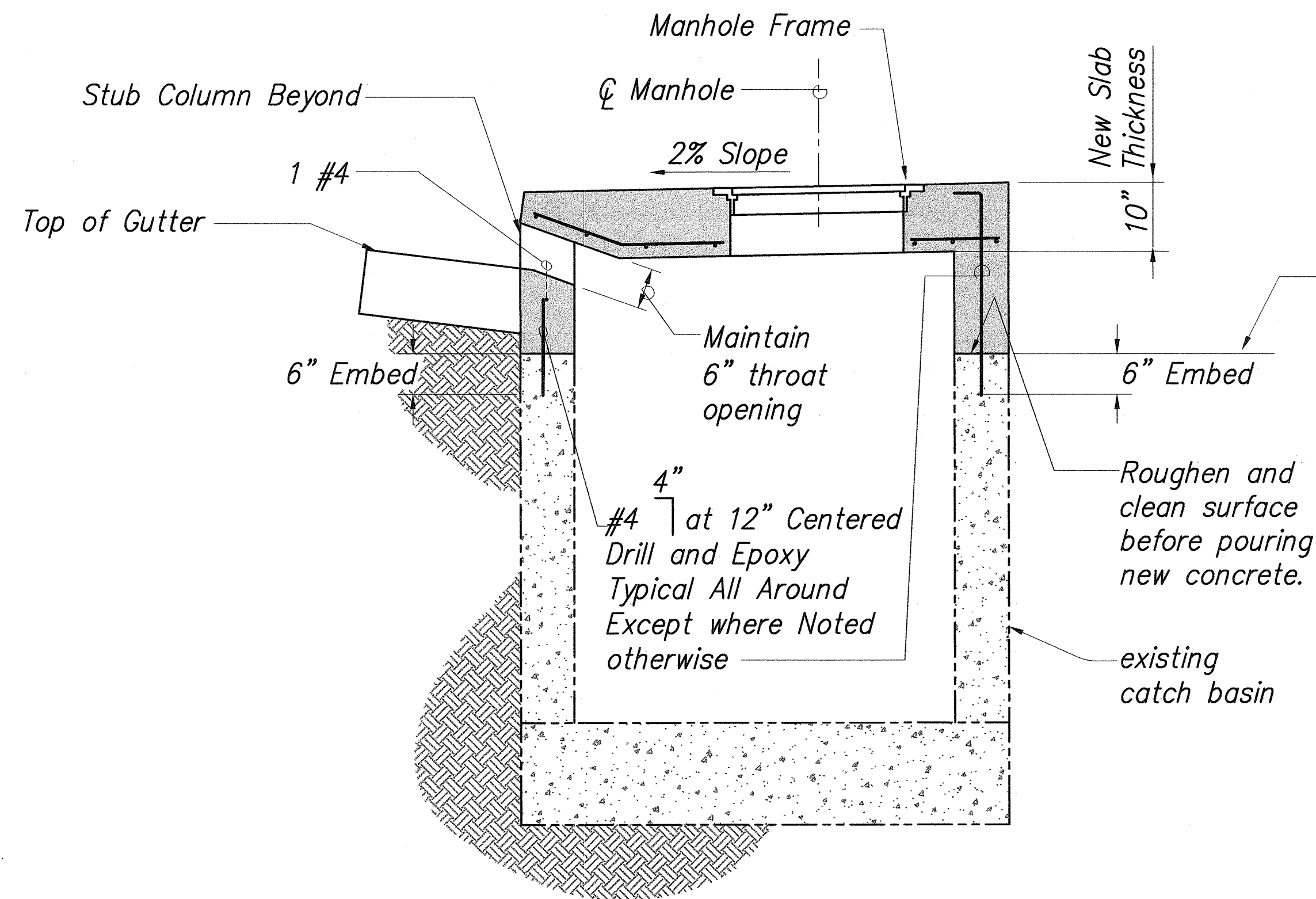
| FED. ROAD DIST. NO. | STATE | PROJ. NO. | FISCAL YEAR | SHEET NO.      | TOTAL SHEETS |
|---------------------|-------|-----------|-------------|----------------|--------------|
| OAHU                | HAW.  | 61D-02-06 | 2006        | ADDED 43 S3.2B | 57           |



**PLAN, TYPE "B" CATCH BASIN AT STA. 350+03.96**  
 Scale: 3/8" = 1'-0"



**PLAN, TYPE "C" CATCH BASIN AT 359+36.55**  
 Scale: 3/8" = 1'-0"



**SECTION**  
 Scale: 3/4" = 1'-0"

|               |                   |      |
|---------------|-------------------|------|
| ORIGINAL PLAN | SURVEY PLOTTED BY | DATE |
| NOTE BOOK     | DRAWN BY          | "    |
|               | TRACED BY         | "    |
|               | QUANTITIES BY     | "    |
|               | CHECKED BY        | "    |

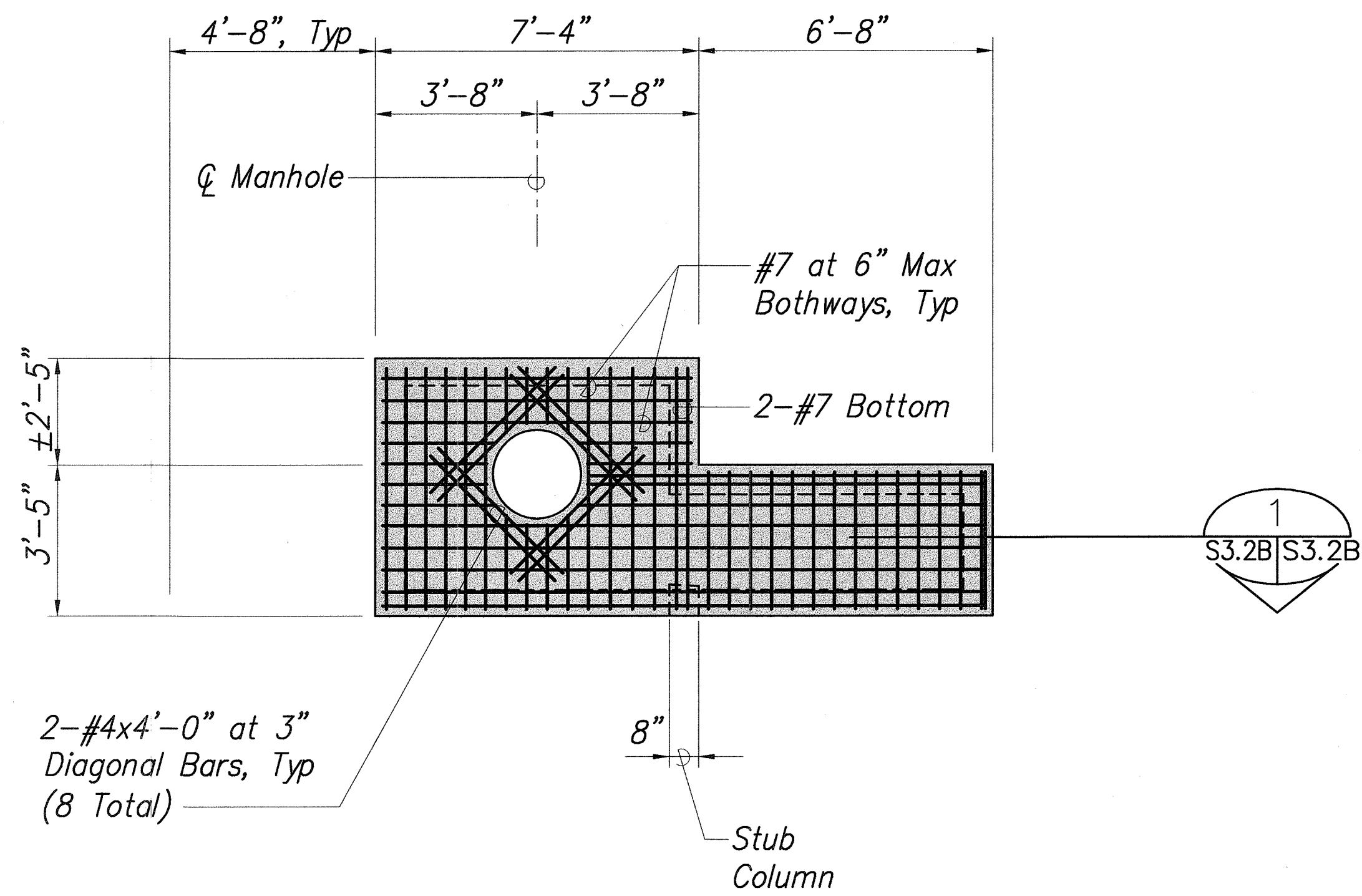
STATE OF HAWAII  
DEPARTMENT OF TRANSPORTATION  
HIGHWAYS DIVISION  
**CATCH BASIN RETROFIT**

KAILUA ROAD PERMANENT  
ROCKFALL AND LANDSLIDE MITIGATION  
PROJECT NO. 61D-02-06

SCALE: AS NOTED  
DATE: 9/24/07  
SHEET No. S3.2A OF 8 SHEETS



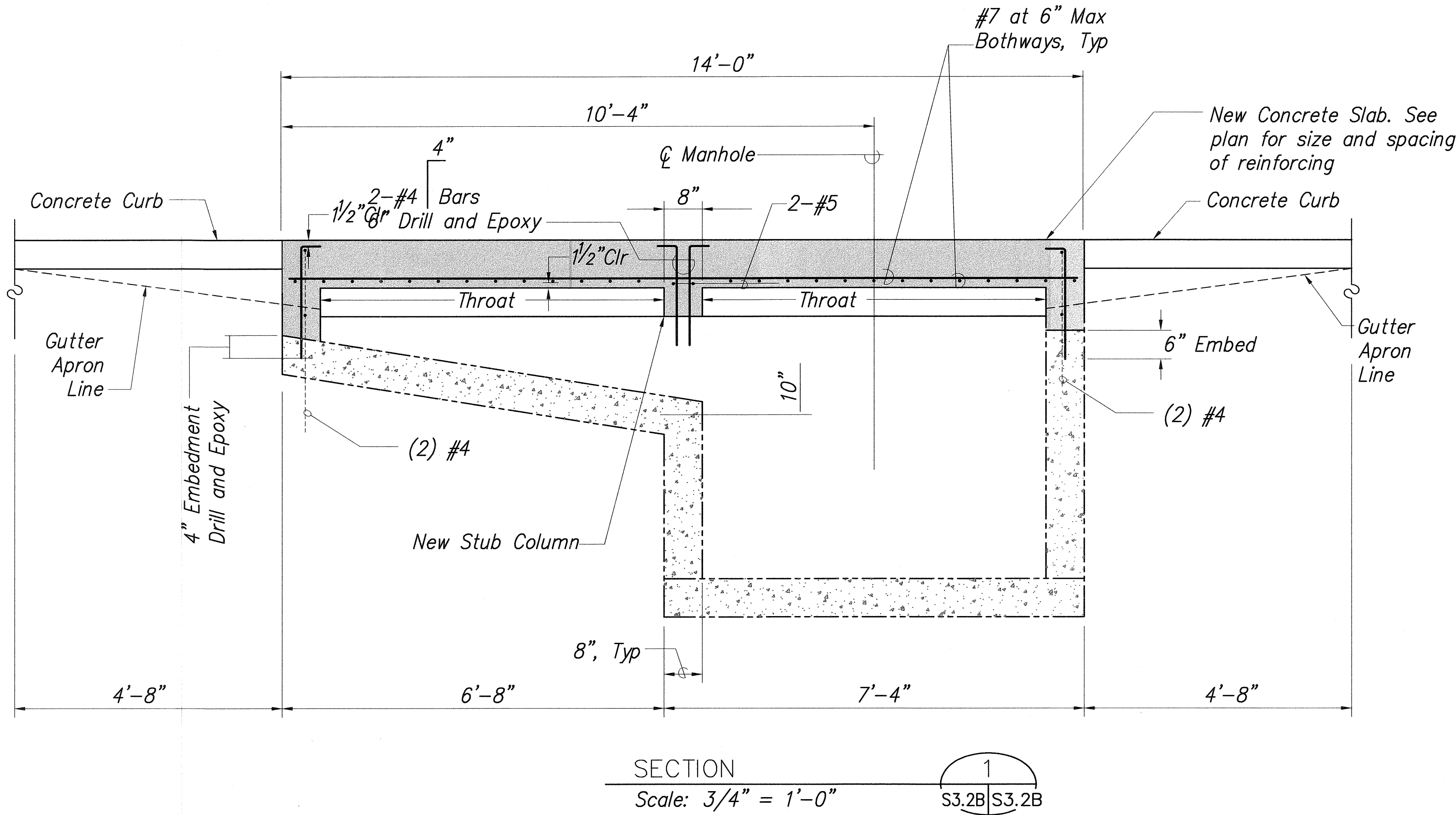
| FED. ROAD DIST. NO. | STATE | PROJ. NO. | FISCAL YEAR | SHEET NO.         | TOTAL SHEETS |
|---------------------|-------|-----------|-------------|-------------------|--------------|
| OAHU                | HAW.  | 61D-02-06 | 2006        | ADDED<br>43 S3.2B | 57           |



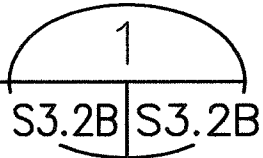
- Note:
1. Use Mirror Reinforcement Layout for Type "B" Catch Basin
  2. Concrete Shall be 4000 psi Compressive Strength at 28 Days.
  3. Reinforcing Steel Shall be ASTM A615, Grade 60.

**SLAB REINFORCING**

Scale: 3/8" = 1'-0"



SECTION  
Scale: 3/4" = 1'-0"



|                   |      |
|-------------------|------|
| SURVEY PLOTTED BY | DATE |
| DRAWN BY          |      |
| DESIGNED BY       |      |
| QUANTITIES BY     |      |
| CHECKED BY        |      |
| ORIGINAL PLAN     |      |
| NOTE BOOK         |      |
| No.               |      |

STATE OF HAWAII  
DEPARTMENT OF TRANSPORTATION  
HIGHWAYS DIVISION

**CATCH BASIN RETROFIT**

KAILUA ROAD PERMANENT  
ROCKFALL AND LANDSLIDE MITIGATION  
PROJECT NO. 61D-02-06

SCALE: AS NOTED      DATE: 9/24/07

SHEET No. S3.2B OF 8 SHEETS