

FED. ROAD DIST. NO.	STATE	PROJ. NO.	FISCAL YEAR	SHEET NO.	TOTAL SHEETS
OAHU	HAWAII	61D-02-06	2006	22	57

SMOOTH ERODED
GULLY (10.8 CY)

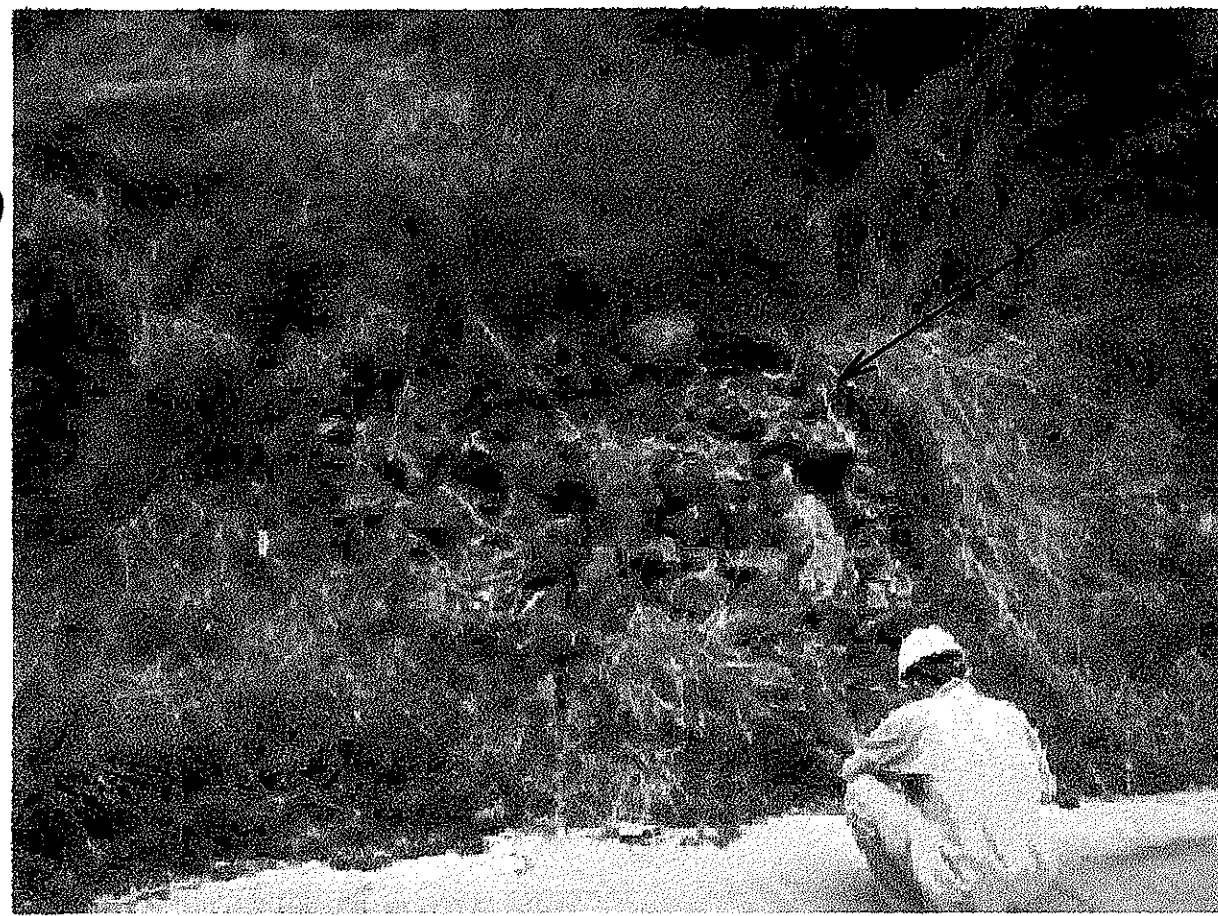


STA 348+61, O/S 60' RT



REMOVE LOOSE ROCK
& ROCK FACE (1.8 CY)

STA 349+64, O/S 65' RT



REMOVE GRP
(8.0 CY)

STA 350+00, O/S 48' RT

REMOVE GRP
(8.0 CY)



STA 350+20, O/S 47' RT



REMOVE ROCK FACE
(7.4 CY)

STA 349+93, O/S 65' RT



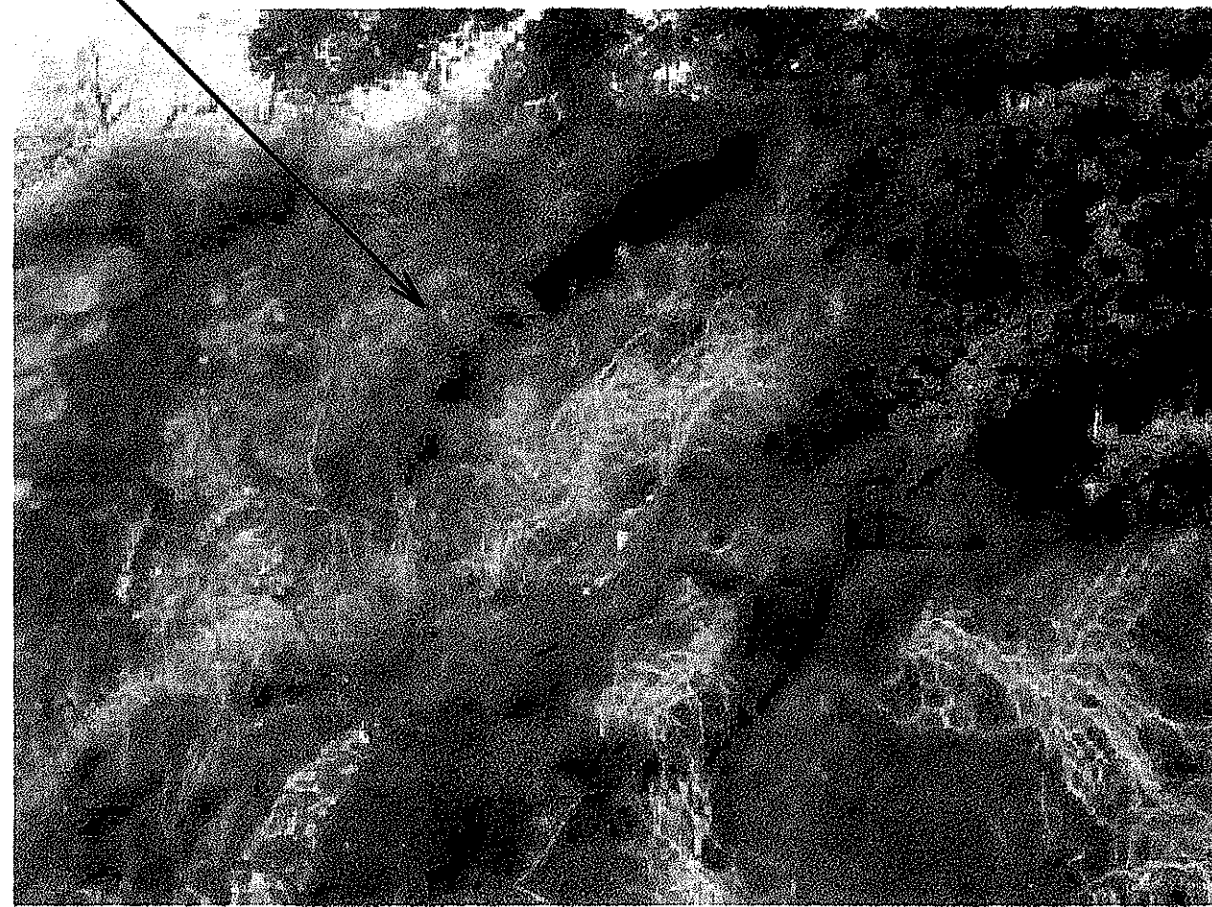
REMOVE
OVERHANG
ROCK (8.0 CY)

STA 351+02, O/S 68' RT

SCALE FRACTURED
ROCKS (2.0 CY)

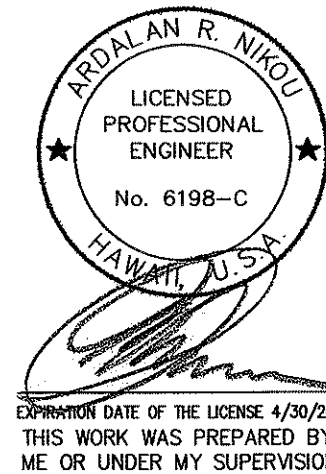


STA 352+14, O/S 75' RT



SURVEY PLOTTED BY	DATE
DRAWN BY	"
TRACED BY	"
QUANTITIES BY	"
CHECKED BY	"
ORIGINAL PLAN	No.
NOTE BOOK	"

EarthTech
A tyco International Ltd. Company



STATE OF HAWAII
DEPARTMENT OF TRANSPORTATION
HIGHWAYS DIVISION

SLOPE SMOOTHING
ALONG CABLE NET SYSTEM
KAILUA ROAD PERMANENT
ROCKFALL AND LANDSLIDE MITIGATION
PROJECT NO. 61D-02-06

Scale: As Noted
Date: Aug 2006

SHEET No. 1 OF 1 SHEETS