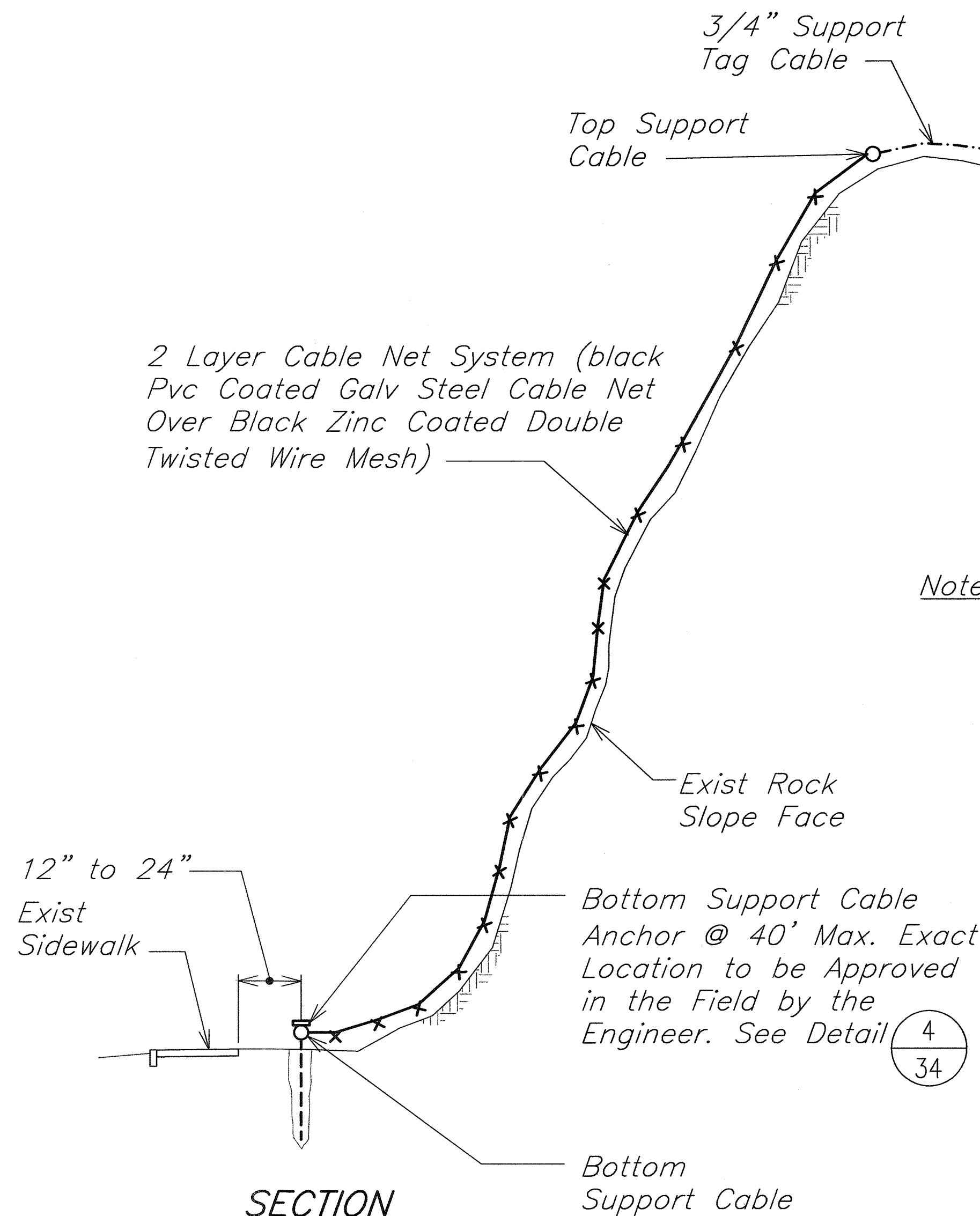
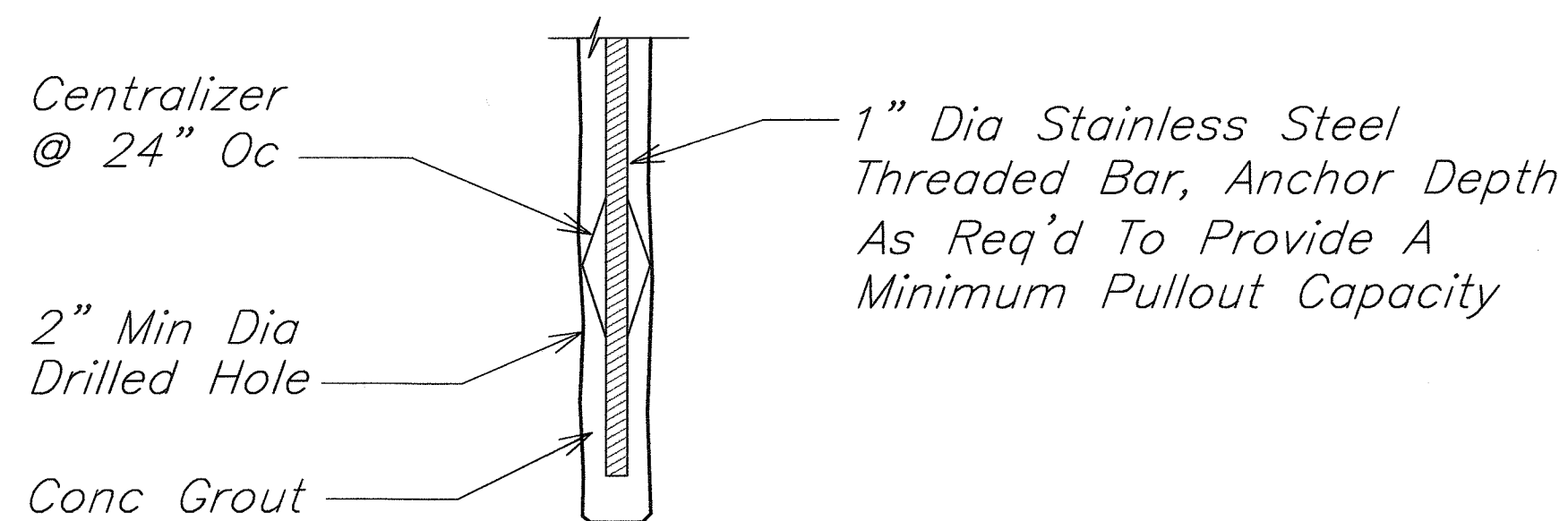


FED. ROAD DIST. NO.	STATE	PROJ. NO.	FISCAL YEAR	SHEET NO.	TOTAL SHEETS
OAHU	HAWAII	61D-02-06	2006	34	57



SECTION

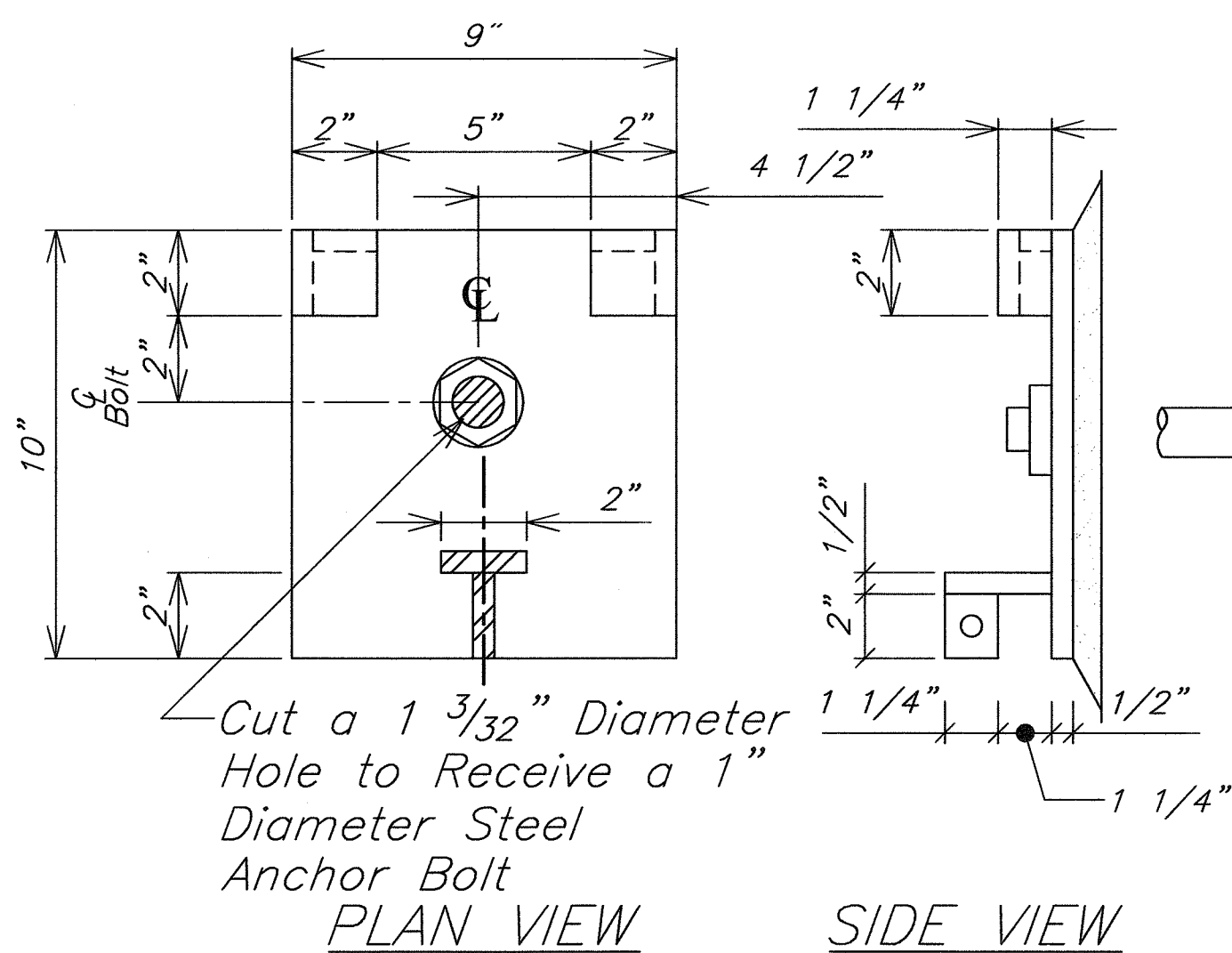
1 CABLE NET SYSTEM
34 SCALE: NOT TO SCALE



3 ANCHOR FOUNDATION DETAIL
34 SCALE: 3" = 1'-0"

Notes:

1. All SS cables and wire ropes shall be PVC coated.
2. Cable net cross clamps shall be powder coated, black color.



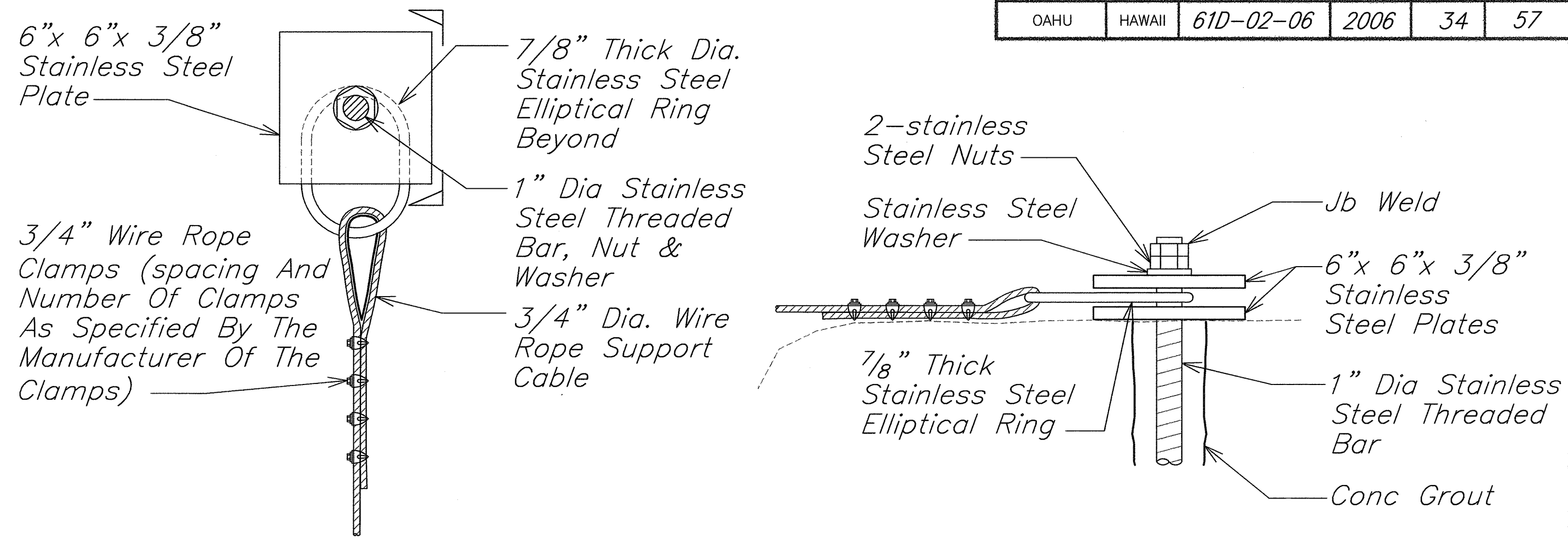
PLAN VIEW

SIDE VIEW

FRONT ELEVATION

BASE DETAIL

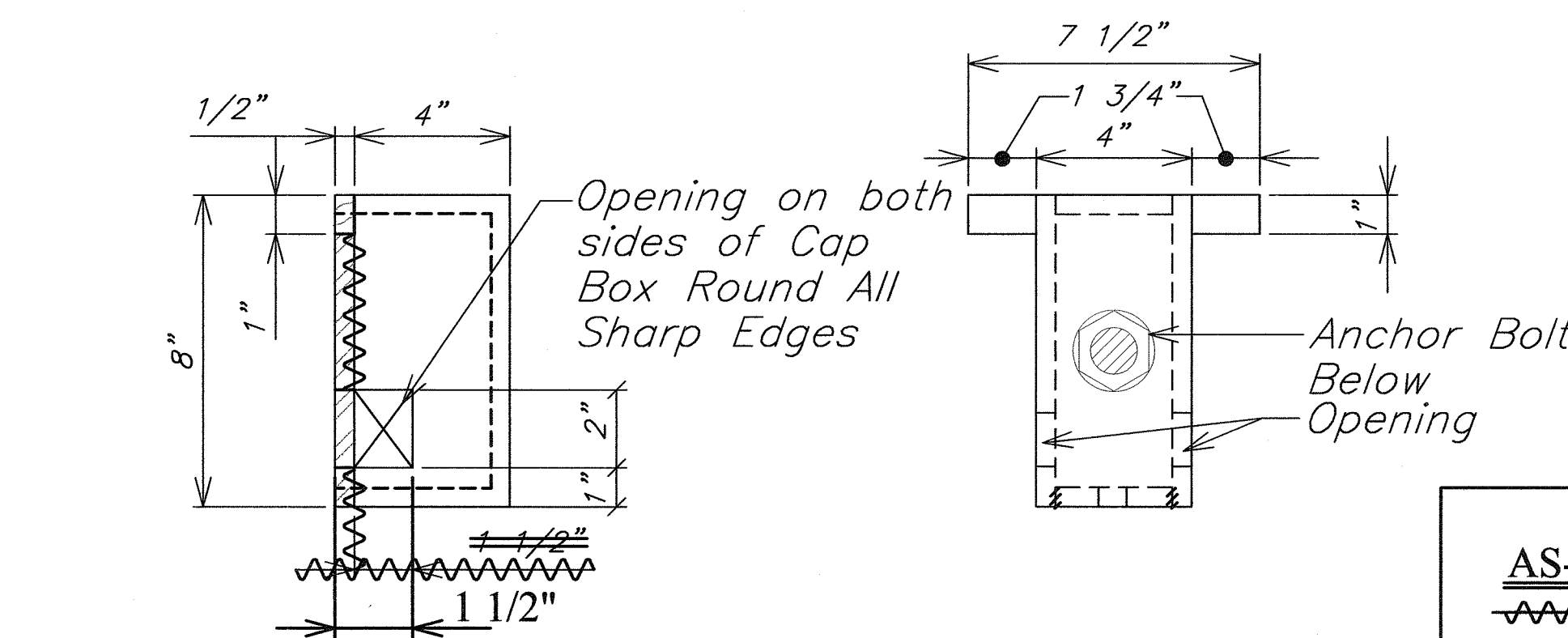
4 BOTTOM SUPPORT CABLE ANCHOR
34 SCALE: 3" = 1'-0"



PLAN

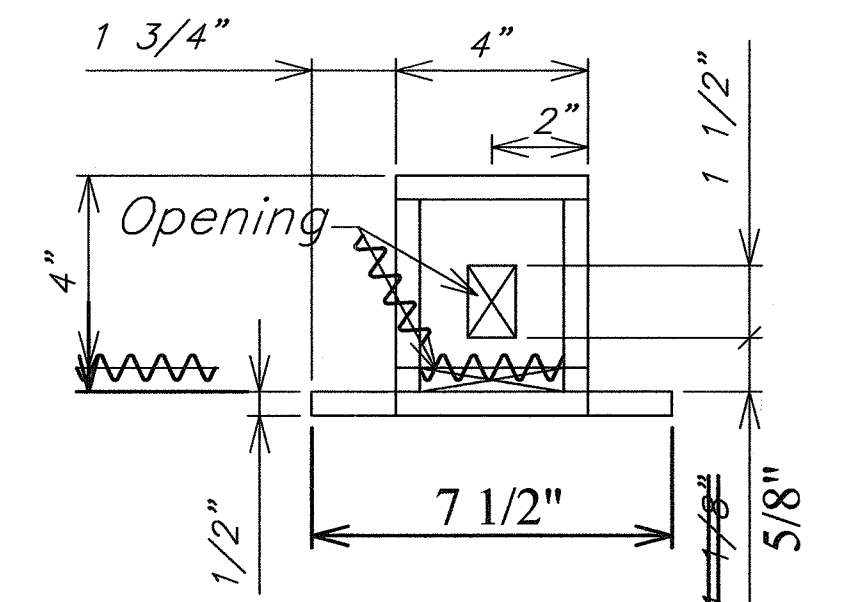
SECTION

2 CABLE SUPPORT/ANCHOR DETAIL
34 SCALE: 3" = 1'-0"



SIDE ELEVATION (OPPOSITE SIDE SIM)

PLAN VIEW



FRONT ELEVATION (OPPOSITE ELEV. SIM/NO OPENINGS)

CAP BOX DETAIL

LEGEND FOR AS-BUILT POSTINGS	
	Squiggly line for as-built deletion
	Double line for as-built deletion
	Roadway Text for as-built posting

Notes:

1. Plates Are All 1/2" Thick
2. Plates Shall Be Welded Using 3/16" Fillet Weld On Both Sides Cont.
3. All Metals Shall Be Hot Dipped Galvanized After Fabrication.

EarthTech
A tyco International Ltd. Company

ARULAN R. NIKU
LICENSED PROFESSIONAL ENGINEER
No. 6198-C
HAWAII, U.S.A.

EXPIRATION DATE OF THE LICENSE: 4/30/2008
THIS WORK WAS PREPARED BY ME OR UNDER MY SUPERVISION.

STATE OF HAWAII
DEPARTMENT OF TRANSPORTATION
HIGHWAYS DIVISION

CABLE NET SYSTEM

KAILUA ROAD PERMANENT
ROCKFALL AND LANDSLIDE MITIGATION
PROJECT NO. 61D-02-06

Scale: As Noted Date: Aug 2006

SHEET No. 1 OF 1 SHEETS

SURVEY PLOTTED BY	DATE
DRAWN BY	
DESIGNED BY	
QUANTITIES BY	
CHECKED BY	
ORIGINAL PLAN	
NOTE BOOK	
No.	