

Diagram illustrating the layout of a stage, showing the positions and dimensions of various sections:

- KING**: 8'-0"
- PJD**: 30'-0"
- STRIPS**: 8'-0"
- PUMP**: 30'-0"
- AHEAD**: 8'-0"

The total length of the stage is 100'-0".

ELONGATED PAVEMENT WORDS DETAIL

Technical drawing of a speed limit sign assembly. The drawing shows a vertical post with a solar panel at the top, a speed limit sign (35), and a display system (XX). The post is labeled "Type I Signal Standard (14 Ft.)". The sign is labeled "SPEED LIMIT 35" and "YOUR SPEED XX". The display system is labeled "Display System". The post is mounted on a foundation with anchor bolts (4 Each) and standard hooks. Dimensions are provided for the sign, post, and foundation.

Labels and Dimensions:

- Solar Panel
- Speed Limit Sign
- Display System
- Type I Signal Standard (14 Ft.)
- Breakaway Base
- 2" cl.
- Foundation
- Anchor Bolt (1"x36"x4") (4 Each)
- 3" cl.
- #4 @ 12" T Φ B E.W.
- Standard Hooks
- 3'-6"
- 4'-3"
- 5'-3"
- 7'-0" Min.
- 14'-0" To Top of Post

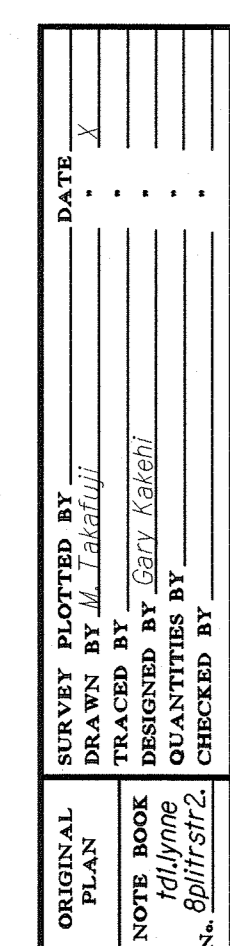
NOTE: For Solar Panel & Battery Installation,
Follow Manufacturer's Recommendations.

Not to Scale

Not to Scale Date: Jan. 2002

30

30

 [td2/may/details/rumble2.dqn](#) |