

FED. ROAD DIST. NO.	STATE	PROJ. NO.	FISCAL YEAR	SHEET NO.	TOTAL SHEETS
HAWAII	HAW.	61C-01-04#	2004	42	91

02-04

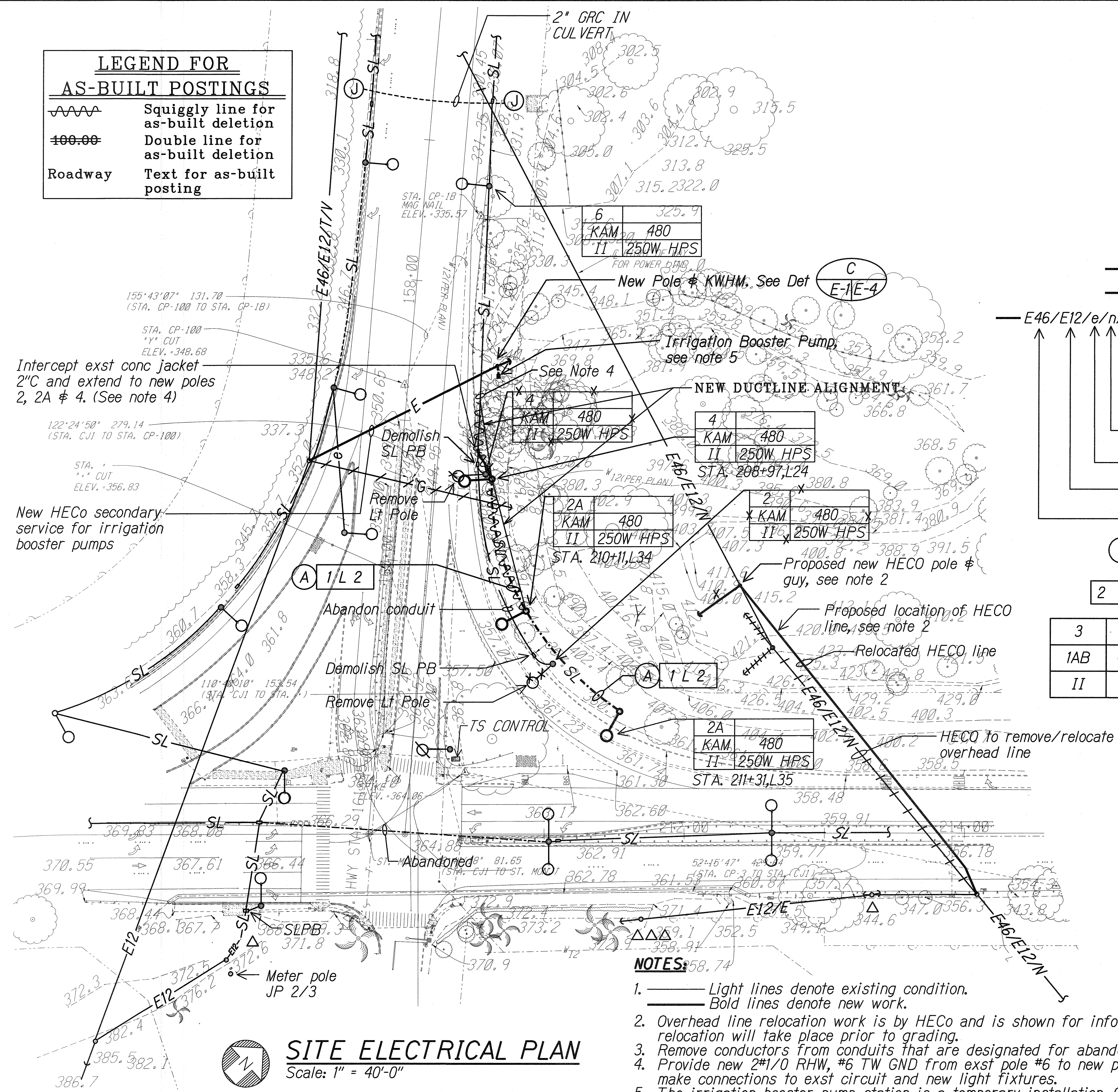
LEGEND FOR AS-BUILT POSTINGS	
	Squiggly line for as-built deletion
	Double line for as-built deletion
Roadway	Text for as-built posting

ELECTRICAL SYMBOLS

	Exist Street Lt Standard
	Remove Street Lt Standard
	New Aluminum St. Lt. Standard, 250W HPS Luminaire, See A E-1/E-2
	New Wood Pole
	Guy & Anchor for Wood Pole
	Street Light Pullbox
	2" PVC 40 Street Light Ductline & Wiring, See Duct Sections, Sheet E-4
	Underground Ductline
	Overhead Utility Lines
	Guy
	CATV
	Telephone
	Neutral
	Secondary Electric
	Primary Electric (Number Indicates Voltage in KV)
	46KV Primary
	Note Indicator
	Duct Section Indicator
	Highway Light Tag, See B E-1/E-3
	Upper Half: 3-Light No. M-Meter No. (Obtain From Meter At Pole JP 2/3)
	Middle: 1A-Circuit/Phase 480V-Voltage
	Lower Half: II - IES Distribution 250W HPS - Lamp Type

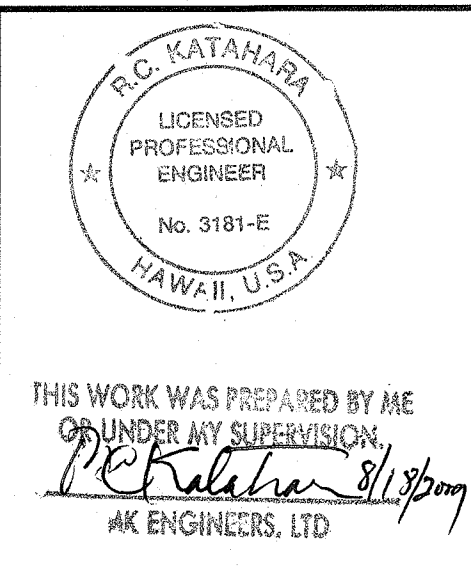
DUCT DESIGNATION

	Duct Section "A" See Duct Section Details
	Conduit Size
	System "L" Lighting, Street or Area
	Number of Ducts



SITE ELECTRICAL PLAN

Scale: 1" = 40'-0"



STATE OF HAWAII DEPARTMENT OF TRANSPORTATION HIGHWAYS DIVISION	
SITE ELECTRICAL PLAN	
KALANIANA'OLE HIGHWAY	
EMERGENCY LANDSLIDE REPAIRS AT CASTLE JUNCTION	
PROJECT NO. 61C-01-04#	02-04
Scale:	Date: 9/12/03

SHEET No. E-1 OF 4 SHEETS

"AS-BUILT"