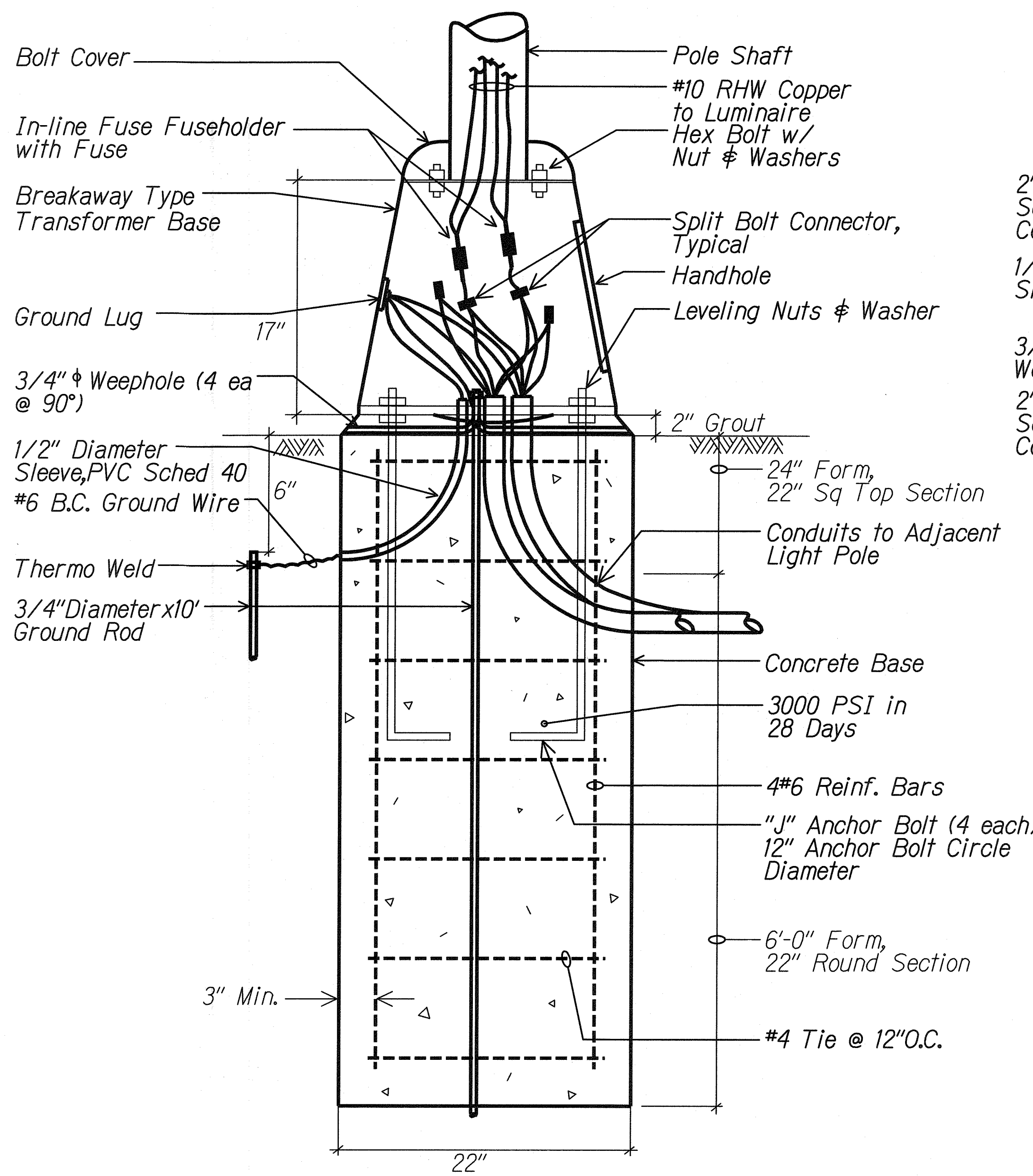
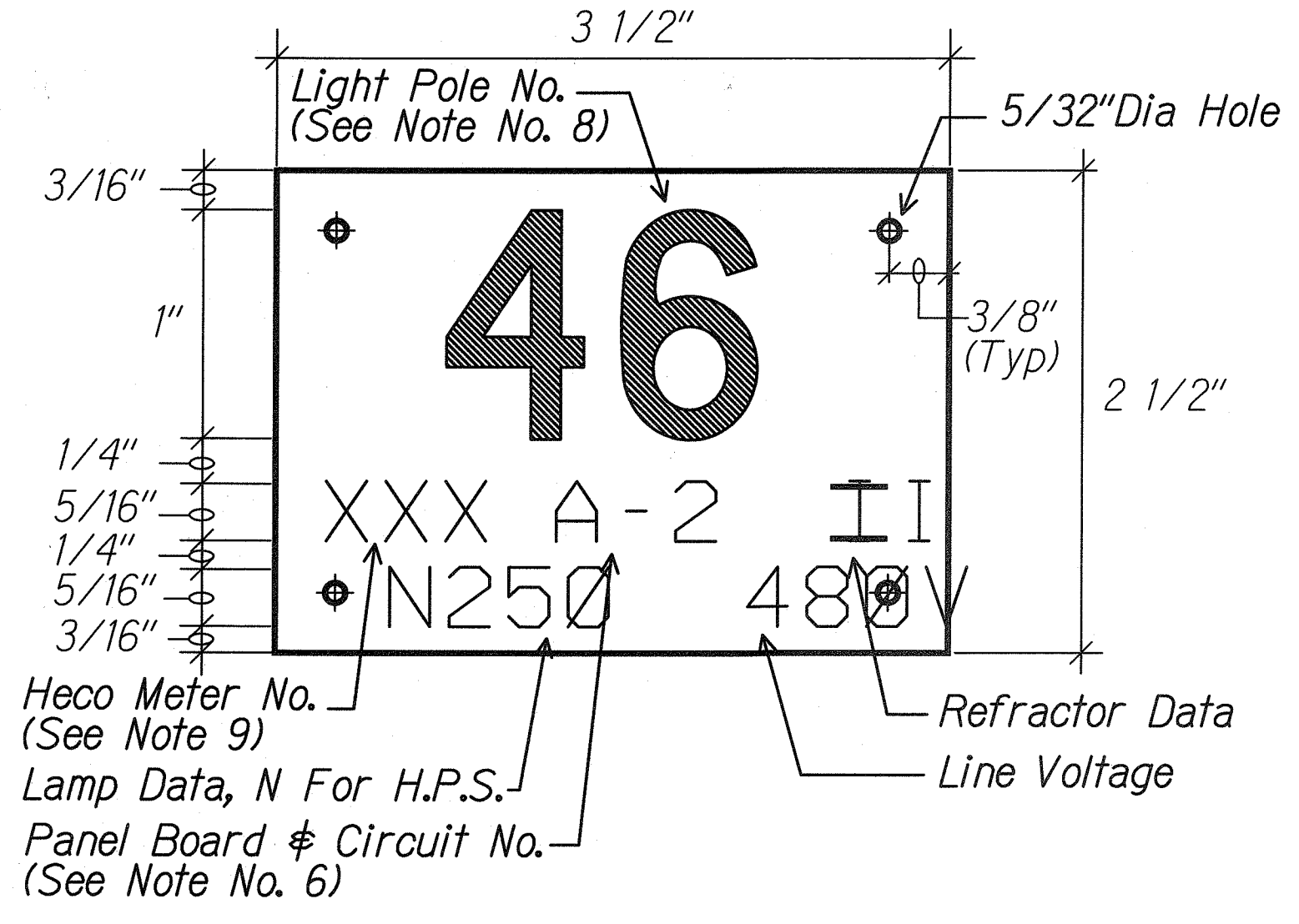
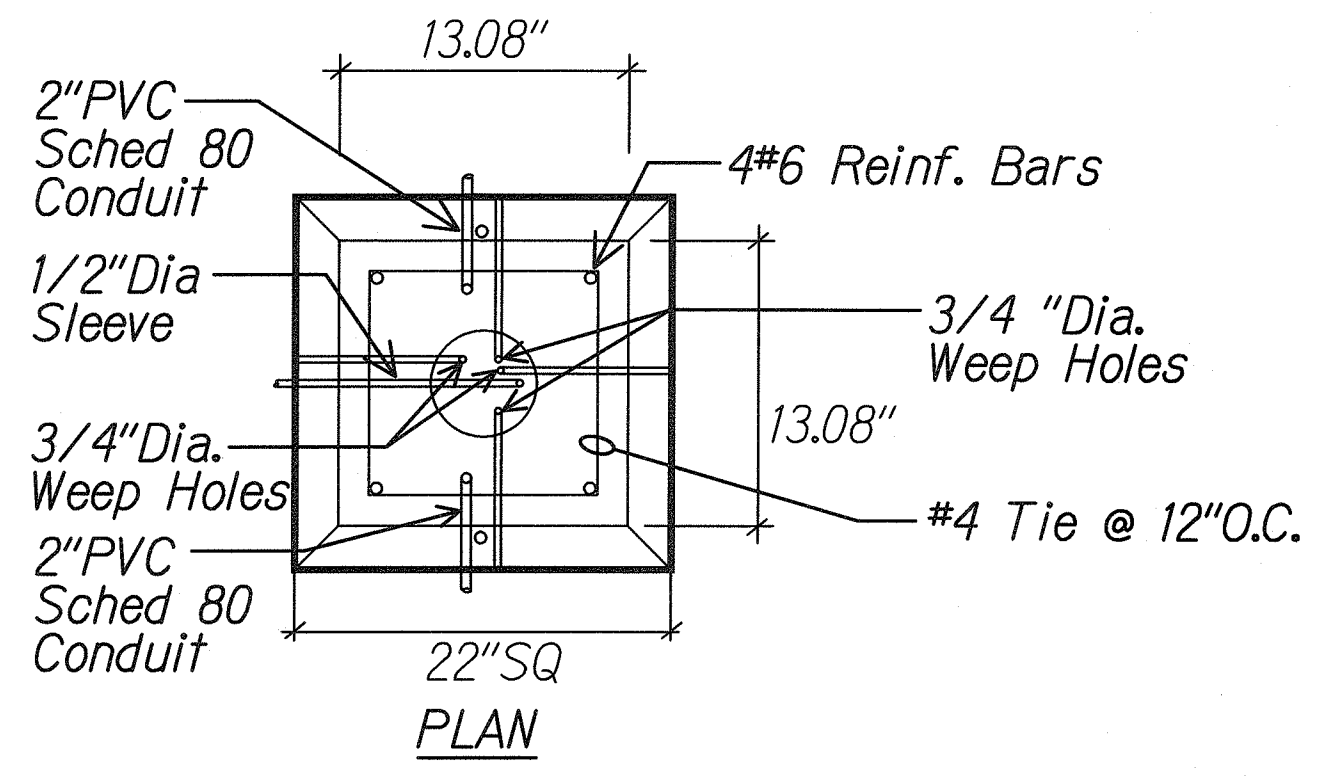


FED. ROAD DIST. NO.	STATE	PROJ. NO.	FISCAL YEAR	SHEET NO.	TOTAL SHEETS
HAWAII	HAW.	61C-01-044	2004	44	91

02-04



**A** **TYPICAL TRANSFORMER BASE WIRING DETAIL**  
E-2 | E-3 NTS 01002-03



**B** **HIGHWAY LIGHT POLE TAG DETAIL**  
E-2 | E-3 NTS 01002-04

- NOTES:**
1. Use 3 Ply Laminated Flexible Plastic Black-White-Black Thickness Black Cap Sheet-0.010", White Base Sheet-0.052", Black Base Sheet-0.010".
  2. Light Pole Number Size Shall Be 1" High and Engraved 1/8" Wide, White in Color (Number as Required).
  3. Nomenclature Size Shall be 5/16" High and Engraved 1/32" Wide, White in Color (Heco Meter Number Panel Board and Circuit Number, Line Voltage, Lamp Data and Refractor Data as Required).
  4. Attach to Aluminum and Steel Post with No. 8 Stainless Steel, 1/2" Long Drive Screws in 1/8" Drill Hole. Attach to Wood Poles with 4D Aluminum Nail.
  5. Numbers are Inscribed by Cutting Through "Black Cap Sheet" to Expose "White Letters."
  6. Nomenclature Required for Systems with Two or More Circuits (Letter Indicates Panel Board, Number Indicates Circuit).
  7. For Light Poles Installed on Ramp, Assign Numbers to Include Ramp I.D. and Light Number. Legend May Be Less Than One (1) Inch in Height.
  8. Light Numbers Shall be Obtained From the State. Use An Alphabet Suffix to Designate Lights Mounted on the Same Pole (e.g. 123A & 123B).
  9. For Non-Metered System, Call Out the Contract Number.

DATE	_____
SURVEY PLOTTED BY	_____
DRAWN BY	_____
DESIGNED BY	_____
CHECKED BY	_____
ORIGINAL PLAN	_____
NOTE BOOK	_____
_____	_____

THIS WORK WAS PREPARED BY ME OR UNDER MY SUPERVISION.  
*R. G. KATAHARA*  
AK ENGINEERS, LTD.

STATE OF HAWAII  
DEPARTMENT OF TRANSPORTATION  
HIGHWAYS DIVISION

**MISCELLANEOUS LIGHTING DETAILS**

KALANIANA'OLE HIGHWAY  
EMERGENCY LANDSLIDE REPAIRS AT CASTLE JUNCTION

PROJECT NO. 61C-01-044 02-04  
Scale: \_\_\_\_\_ Date: 9/12/03

"AS-BUILT"