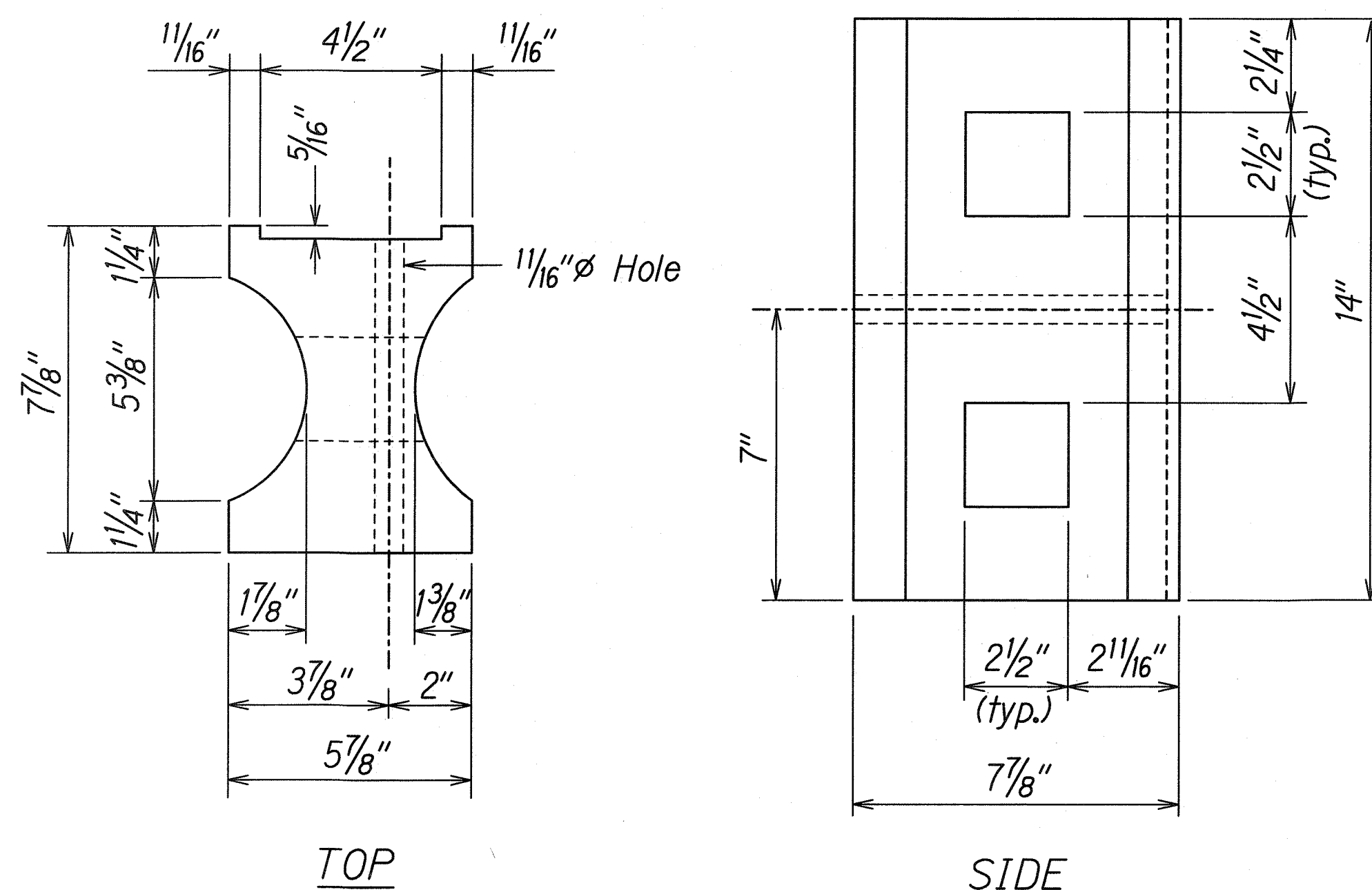


FED. ROAD DIST. NO.	STATE	PROJ. NO.	FISCAL YEAR	SHEET NO.	TOTAL SHEETS
HAWAII	HAW.	61C-01-041#	2004	20	91

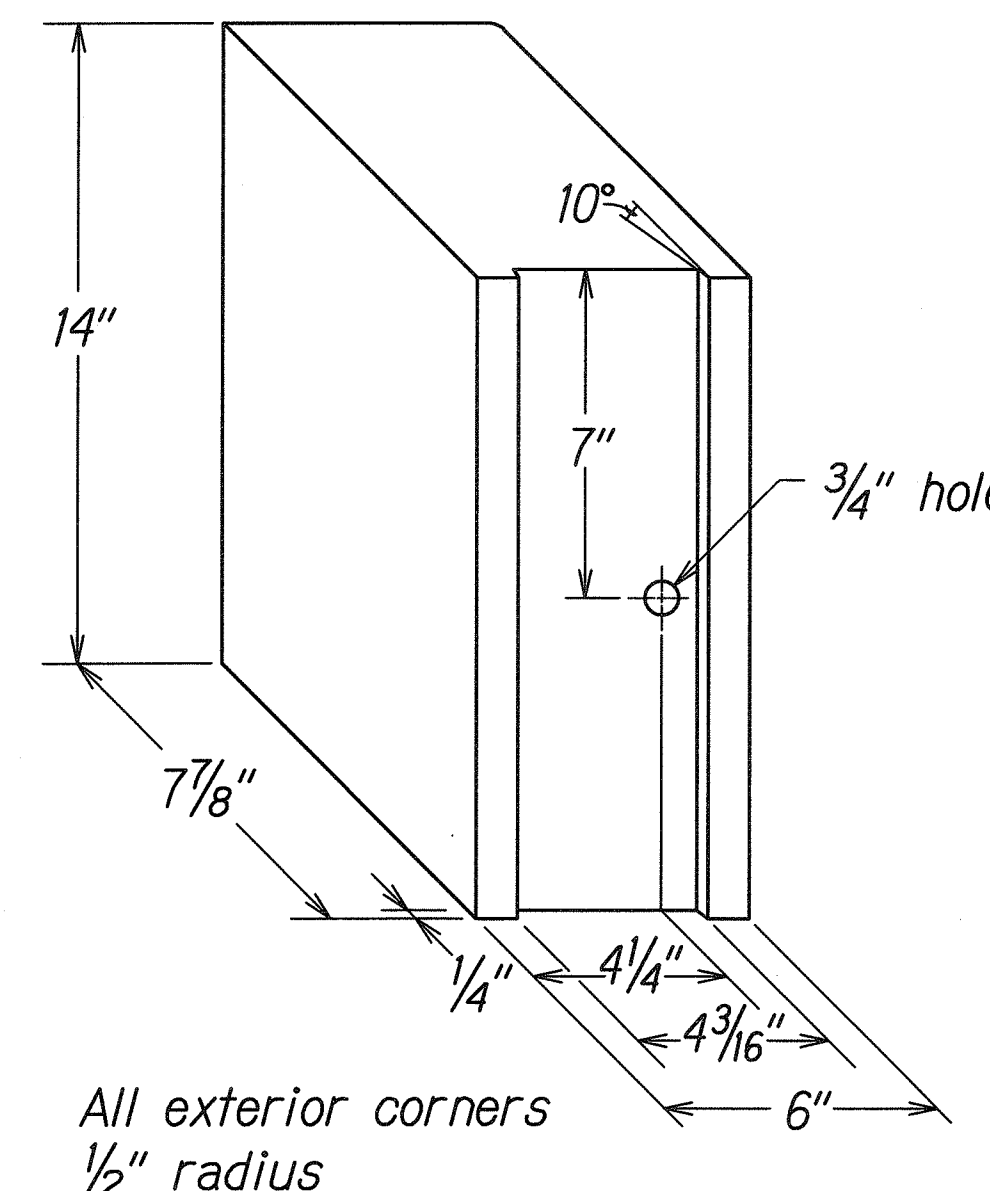
GENERAL NOTES

02-04

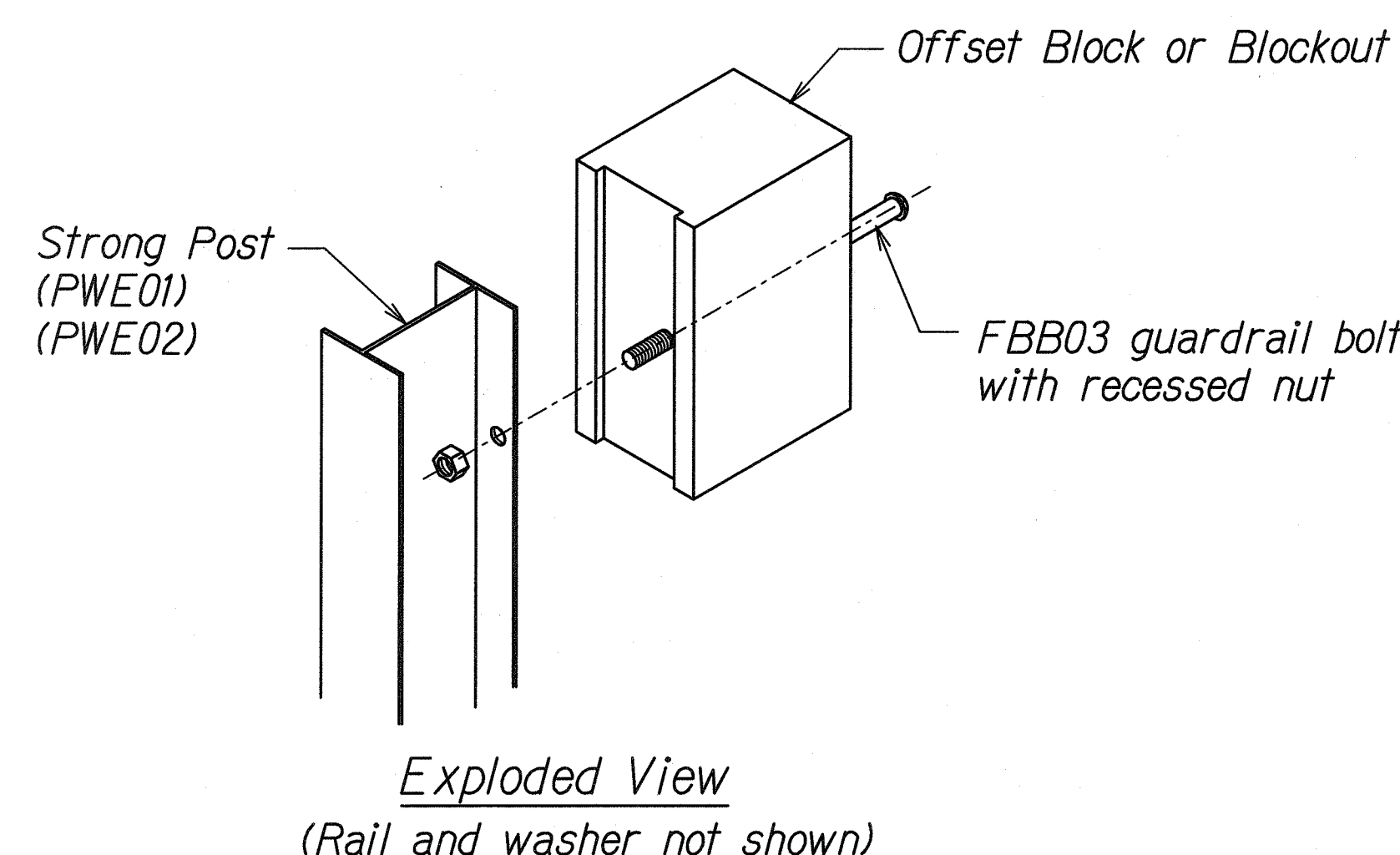
- All hardware, posts and fasteners shall be hot-dip zinc coated galvanized after fabrication. No punching, drilling or cutting will be permitted after galvanizing.
- Where conditions require, special post lengths in increments of 6 inches may be specified.
- All fasteners, posts, and rail elements (i.e. FBB03, PWE01, RWM02b, etc.) shall conform to the latest edition and amendments of "A Guide to Standardized Highway Barrier Rail Hardware", a report prepared and approved by the AASHTO-AGC-ARTBA Joint Cooperative Committee, Subcommittee On New Highway Materials, Task Force 13 Report. Dimensions of fasteners, posts and rail elements have been converted from metric units into their present form.
- The Recycled Plastic Block or Offset Block shall be approved by the State.
- All new guardrail systems (system consists of total length of guardrail including both end treatments) shall include the Additional Paved Area.
- After the guardrail posts are installed in the paved area, the Contractor shall fill/seal around each guardrail post and all cracks in the paved area caused during the guardrail post installation. If required by the inspector/engineer, the Contractor shall tamper the paved area around the guardrail post prior to filling/sealing. All costs associated with this work shall not be paid for separately, but shall be considered incidental to the various guardrail items.
- When standards for the fill slope area cannot be met, a site specific, engineer approved design may be used.
- New A.C. pavement at guardrails shall extend 6 feet longitudinally beyond terminal ends.
- Reflector Markers (RM-5) mounted on guardrails shall be spaced every 200 feet. Spacing of RM-5's on Horizontal Curves shall comply with Table III-1 of the MUTCD. RM-5's shall not be installed on Terminal Sections.



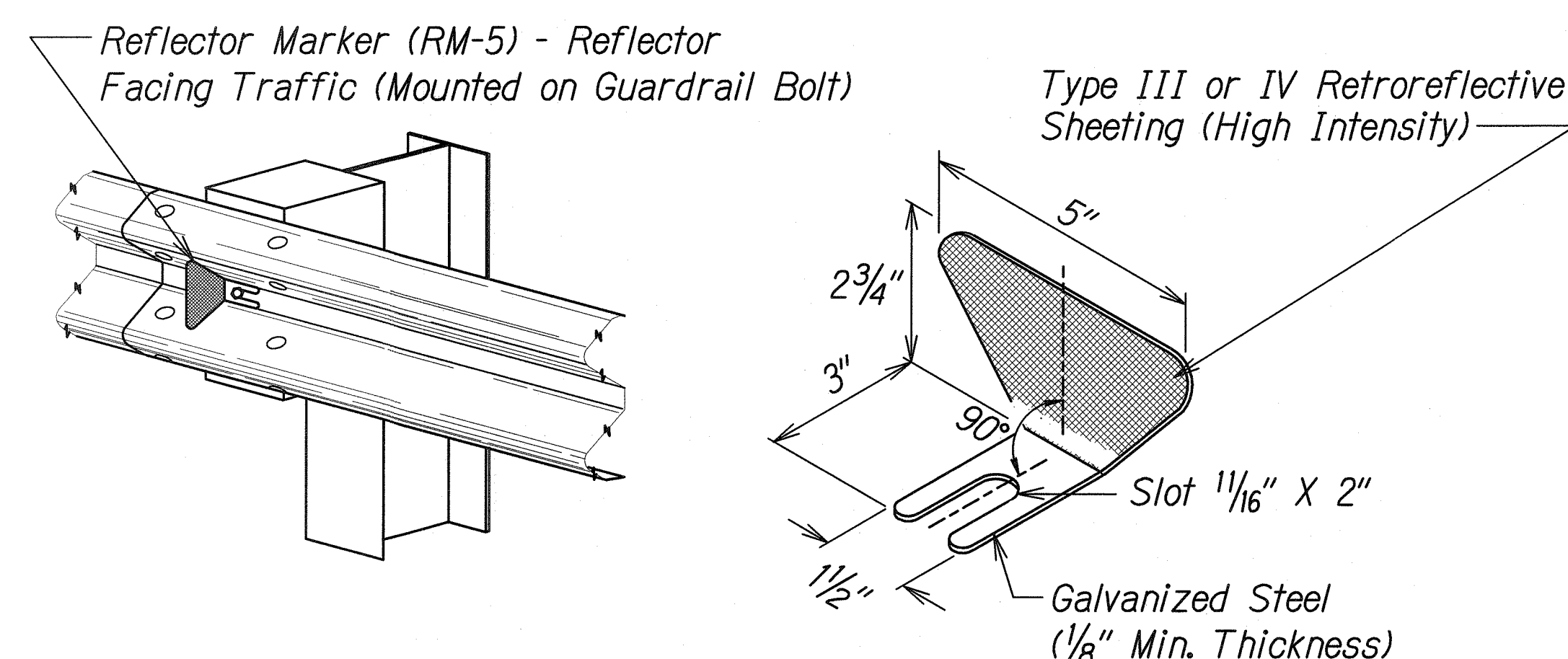
TOP
SIDE
RECYCLED PLASTIC BLOCKOUT (TYPE I)



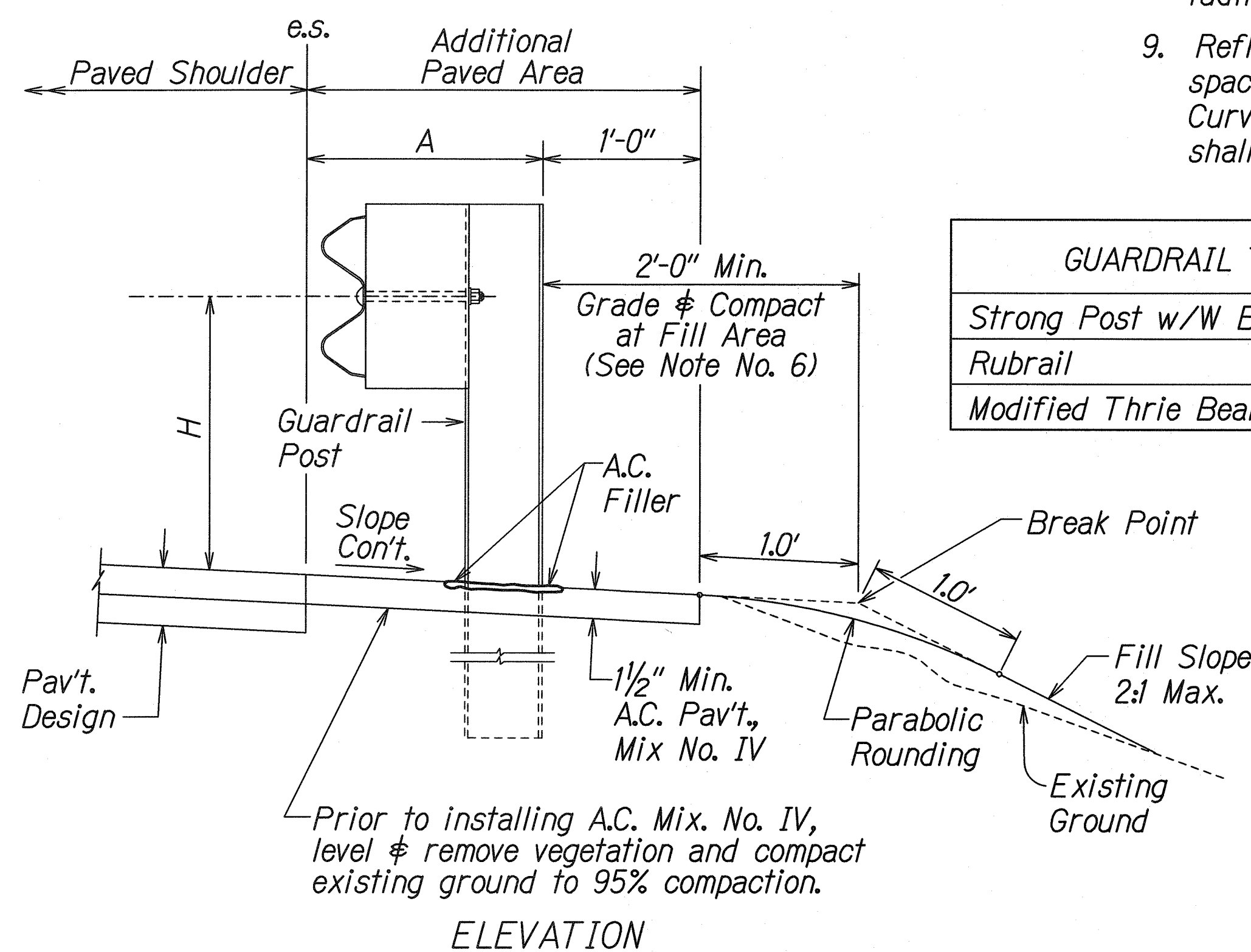
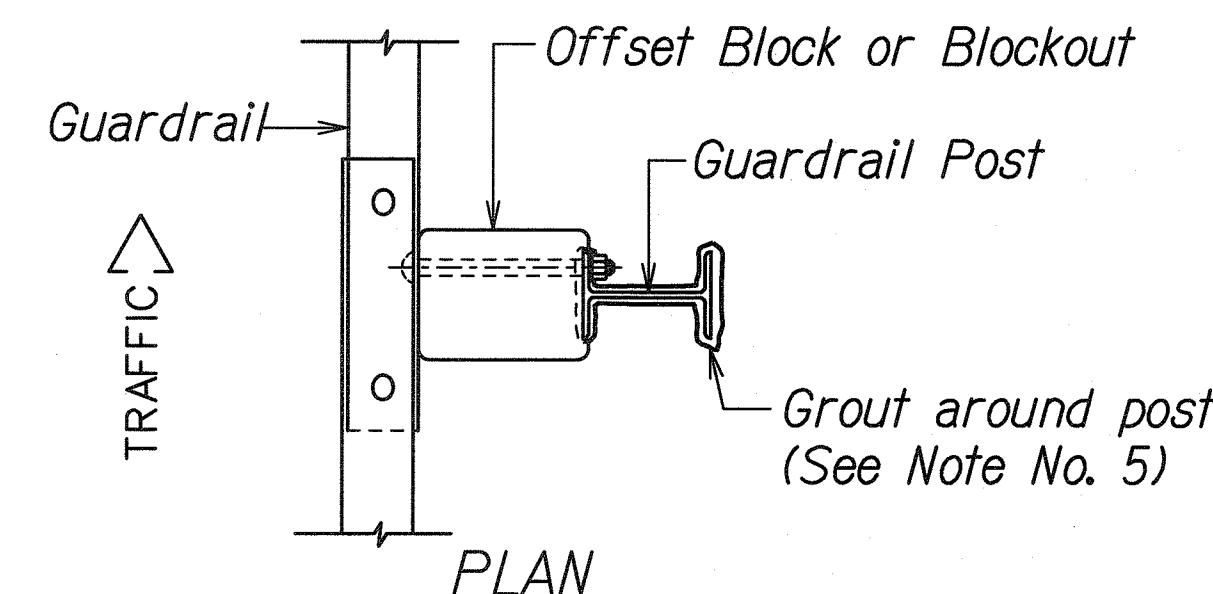
RECYCLED POLYETHYLENE
OFFSET BLOCK (TYPE II)



STEEL POST AND BLOCK DETAIL



REFLECTOR MARKER (RM-5) DETAIL AND TYPICAL INSTALLATION



TYPICAL GUARDRAIL INSTALLATION

GUARDRAIL TYPE	DIMENSION	
	H	A
Strong Post w/W Beam	1'-9 5/8"	1'-6"
Rubrail	2'-0"	1'-6"
Modified Thrie Beam	2'-0"	2'-0"

THIS WORK WAS PREPARED BY ME OR UNDER MY SUPERVISION

R. M. Urasky

STATE OF HAWAII
DEPARTMENT OF TRANSPORTATION
HIGHWAYS DIVISION

GUARDRAIL DETAILS & NOTES

KALANIANA'OLE HIGHWAY
EMERGENCY LANDSLIDE REPAIRS AT CASTLE JUNCTION

PROJECT NO. 61C-01-041# 02-04
Scale: NTS Date: Sept. 26, 2003

SHEET No. C-8 OF 12 SHEETS