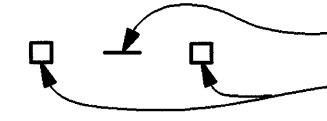


FED. ROAD DIST. NO.	STATE	PROJ. NO.	FISCAL YEAR	SHEET NO.	TOTAL SHEETS
HAWAII	HAW.	61B-01-98	1999	9	18

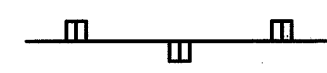
LEGEND



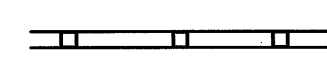
4 each Type A Raised Pavement Markers
Type C Raised Pavement Markers @ 40'-0" o.c.



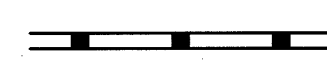
4 each Type J Raised Pavement Markers
Type D Raised Pavement Markers @ 40'-0" o.c.



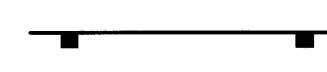
8" White Stripe with Type C Raised Pavement Markers @ 20'-0" o.c. (Tape, Type I or Thermoplastic Extrusion)



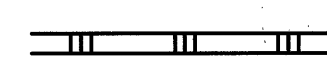
4" Double Solid Yellow with Type D Raised Pavement Markers @ 20'-0" o.c. (Tape, Type I or Thermoplastic Extrusion)



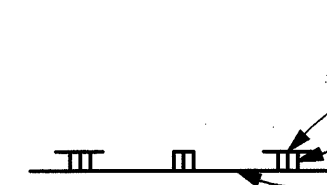
4" Double Solid Yellow Stripes with Type H Raised Pavement Markers @ 20'-0" o.c. (Tape, Type II or Thermoplastic Extrusion)



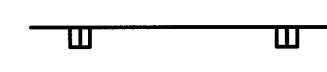
4" Yellow Edge Stripe with Type H Raised Pavement Markers @ 40'-0" o.c. (Tape, Type II or Thermoplastic Extrusion)



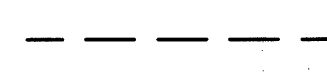
4" Double Solid White Stripes with Type C Raised Pavement Markers @ 20'-0" o.c. (Tape, Type I or Thermoplastic Extrusion)



Lane Change Restriction Marking
4 each Type A Raised Pavement Markers
Type C Raised Pavement Markers @ 20'-0" o.c.
4" White Stripe (Tape, Type I or Thermoplastic Extrusion)



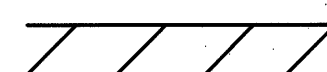
4" or 8" White Edge Stripe with Type C Raised Pavement Markers @ 40'-0" o.c. (Tape, Type II or Thermoplastic Extrusion)



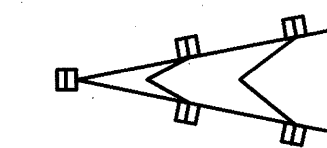
4" White Guide Lines (Tape, Type III or Thermoplastic Extrusion except for bus bays)



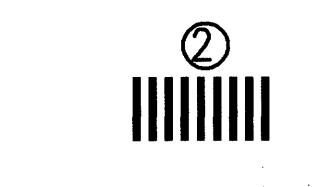
Transverse Median Marking (Tape, Type II or Thermoplastic Extrusion)



Transverse Shoulder Marking (Tape, Type II or Thermoplastic Extrusion)



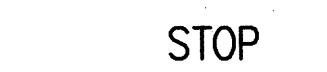
Channelizing Island or Deceleration Lane Gore (Tape, Type II or Thermoplastic Extrusion)



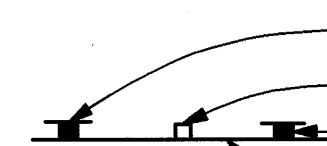
Crosswalk and Stop Line. All Stop Lines shall be 10'-0" from Crosswalk unless otherwise noted. The circled number indicates the number of lanes for payment (Tape, Type III or Thermoplastic Extrusion)



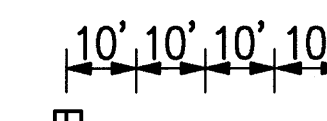
Pavement Arrow (Tape, Type III or Thermoplastic Extrusion)



Pavement Word (Tape, Type III or Thermoplastic Extrusion)



4 Each Type J Raised Pavement Markers
Type D Raised Pavement Markers @ 40'-0" o.c.
Type H Raised Pavement Markers (Reflective Surface facing no-passing direction)
4" Single Solid Yellow Stripe (Tape, Type I or Thermoplastic Extrusion)



Extension of Edge Line, 4" Wide x 2'-0" Long White Stripe @ 10'-0" o.c. w/Type C Markers @ 40'-0" o.c. (Tape, Type III or Thermoplastic Extrusion)

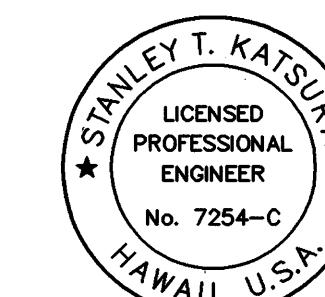
NOTES

- Layout of pavement markings and striping shall be done by the Contractor and accepted by the Engineer prior to any installation work.
- Existing pavement markings not incorporated in the final traffic pattern shall be removed as ordered by the Engineer. Costs shall be incidental to the various pavement marking items.
- Raised pavement markers shall not be installed within crosswalks.
- Final locations of all signs shall be accepted by the Engineer prior to any installation work.
- Existing signs not shown on these plans shall remain as posted unless otherwise ordered by the Engineer. Removal and disposal of existing signs and/or posts, as designated on these plans shall be incidental to the various signing items.
- Final locations of all Stop Lines shall be accepted by the Engineer prior to installation.
- All pavement striping shall be as noted on the legend or plans.
- All preformed pavement marking tapes over existing pavement shall be applied with an approved primer as recommended by the tape manufacturer and accepted by the Engineer. The primer shall be allowed to dry to the tacky stage prior to tape application.
- The Contractor shall erect at the beginning of the project and at the end of the project advance construction warning signs placed as indicated on the plans or as ordered by the Engineer for the duration of the highway project and shall be maintained by the Contractor. These signs shall be placed in addition to the required traffic control signs called for in Section 645 - Traffic Control. The advance construction warning signs shall be new and become the property of the State. The Contractor shall remove, clean, and deliver the signs and posts to the District Baseyard, or as ordered by the Engineer, upon the completion of the project.
- Curb marking shall include top of curb and both sides.
- Backing for all new Regulatory and Warning Signs shall not be spliced.
- All sign panels shall conform to Section 621 of Special Provisions and the latest editions and amendments of the following FHWA publications:
 - "Manual on Uniform Traffic Control Devices for Streets and Highways" (MUTCD)
 - "Standard Highway Signs"
 - "Standard Alphabets for Highway Signs"
- Border, messages, arrows, symbols and shields shall conform to details as shown on the plans and as specified in the MUTCD.
- Sign messages shall be as indicated on the plan.
- All panels shall be reflectorized in according to Subsection 712.20 of the Standard Specifications. Minimum width of panels shall be 2 feet, abutting edges of panels shall be in only one direction if vertical abutting edges are used, no horizontal abutting edges shall be allowed and vice versa.
- All new and relocated signs and markers installed on pipe posts, light standard or expressway sign post are to be mounted with band brackets and steel braces.
- Final location of all sign post installed within the sidewalk areas shall maintain a minimum clearance width of 36 inches from sidewalk edge to provide for wheelchair accessibility.
- Removing existing signs and reinstalling on new post shall not be paid for separately, but shall be considered incidental to the various signing items.
- Signs placed along bikeways shall have a minimum height clearance of 8'-0".
- All existing sign post(s) to remain within the sidewalk area shall meet the minimum clear width of 36 inches from the sidewalk edge. Where necessary, the existing sign post(s) shall be relocated to meet the minimum clear width. This work shall not be paid for separately but shall be considered incidental to the various signing items.

ORIGINAL PLAN	SURVEY PLOTTED BY	DATE
DRAWN BY		
TRACED BY		
NOTED BY		
QUANTITIES BY		
CHECKED BY		
No.		

CAD by J. Minura, SS-52

Last Saved: J:\KAL-PAU\MISC\kp-note3.dwg, dwg 01/19/99 at 09:32



THIS WORK WAS PREPARED BY ME
OR UNDER MY SUPERVISION.

Stanley T. Katsura

PAVEMENT MARKINGS, LEGEND, DETAIL & NOTES

PALI HIGHWAY
EXTEND LEFT-TURN STORAGE LANE
AT WAOKANAKA STREET
PROJECT NO. 61B-01-98

SCALE: AS SHOWN DATE: JANUARY 1999

SHEET NO. SS1 OF 3 SHEETS