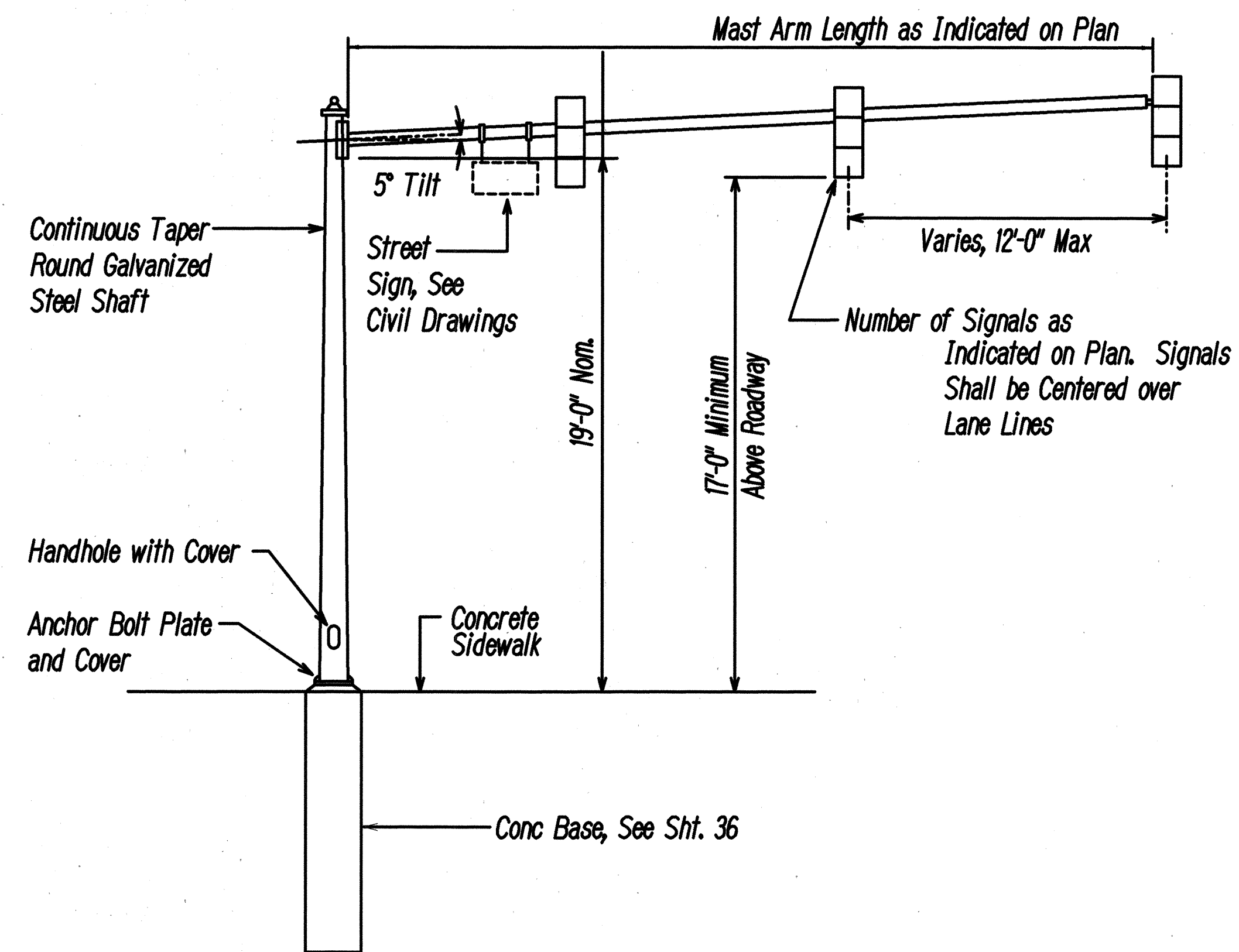


FED. ROAD DIST. NO.	STATE	PROJ. NO.	FISCAL YEAR	SHEET NO.	TOTAL SHEETS
HAWAII	HAW.	STP-061-K(34)	2000	32	38

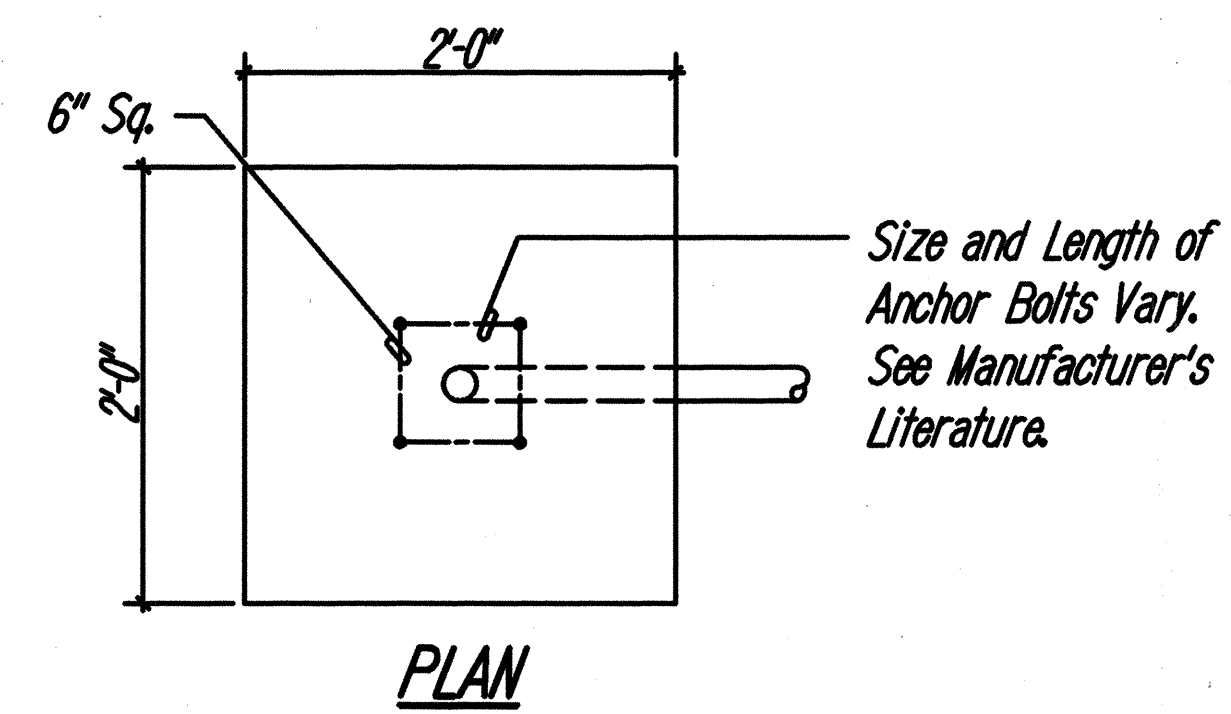


ELEVATION

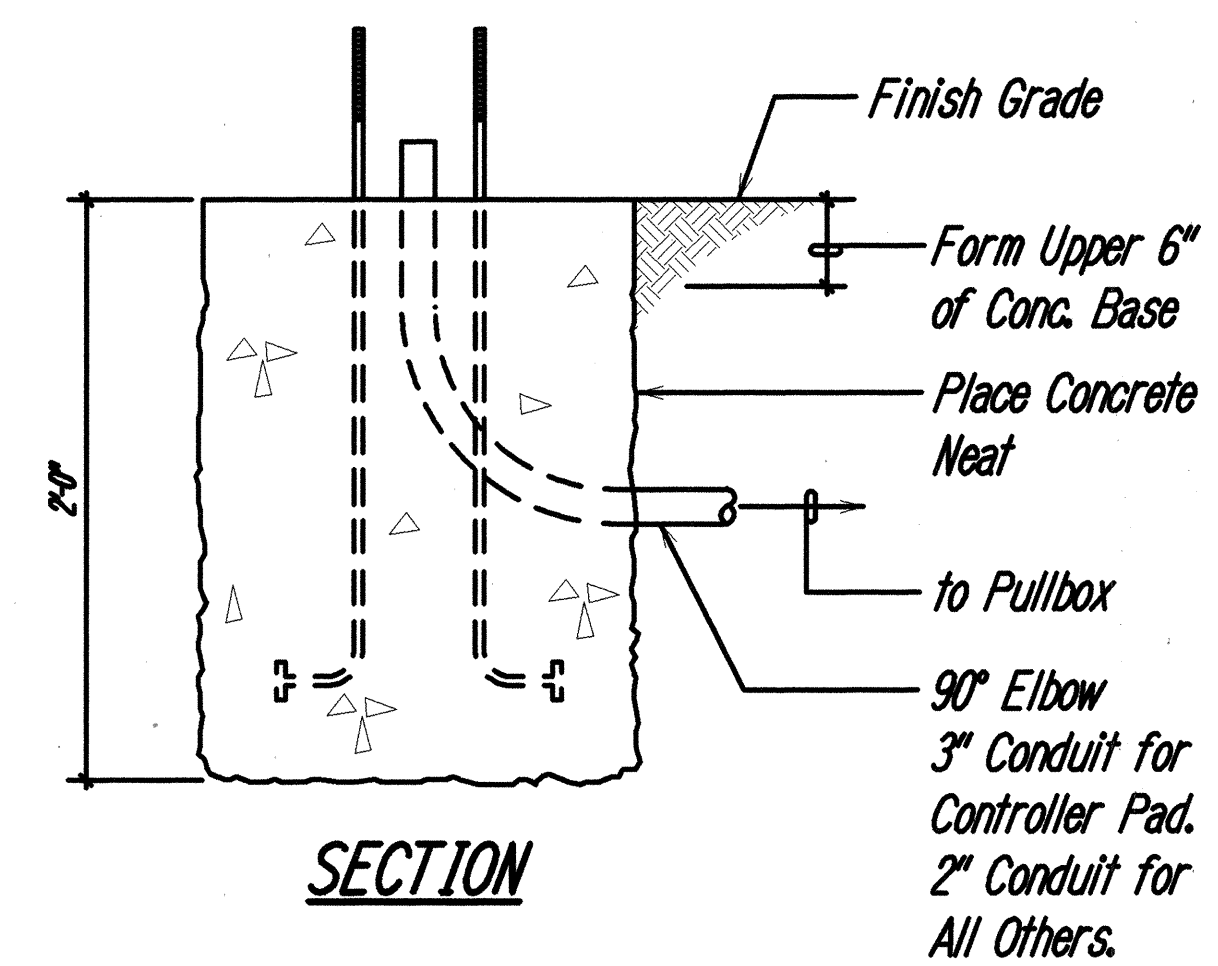
Notes:

1. Item for Type II Traffic Signal Standard with Mast Arm and Foundation includes Highway Lighting Bracket Arm.
2. For Additional Details See Standard Plan TE-38.
3. Size, Length and Diameter of Anchor Bolts shall be as Recommended by the Manufacturer. Contractor shall Submit Catalog Cuts to the Engineer for Approval.
4. Handhole shall Face Travelway.

A
TRAFFIC SIGNAL TYPE II STANDARD
E-10 NOT TO SCALE



PLAN



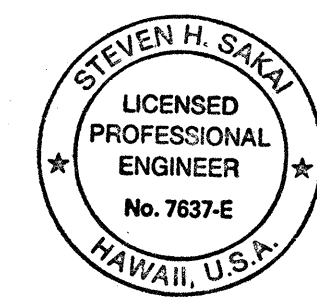
SECTION

NOTES:

1. Concrete shall be class "B".
2. Type "A" concrete base shall be used for type I-10, I-7 and I-3 standards.
3. Conduit bend is incidental to concrete base construction.

B
TYPE "A" CONCRETE BASE
E-10 NOT TO SCALE

ORIGINAL PLAN	SURVEY PLOTTED BY	DATE
NOTE BOOK	DRAWN BY	
DESIGNED BY		
CHECKED BY		
APPROVED BY		



THIS WORK WAS PREPARED BY ME
OR UNDER MY SUPERVISION
Steven H. Sakai

STATE OF HAWAII
DEPARTMENT OF TRANSPORTATION
HIGHWAYS DIVISION

**TRAFFIC SIGNAL
STANDARD DETAILS II**

PALI HIGHWAY INTERSECTION IMPROVEMENTS

AT JACK LANE

PROJECT NO. STP-061-K(34)

Scale: None Date:

SHEET No. E-10 OF 13 SHEETS