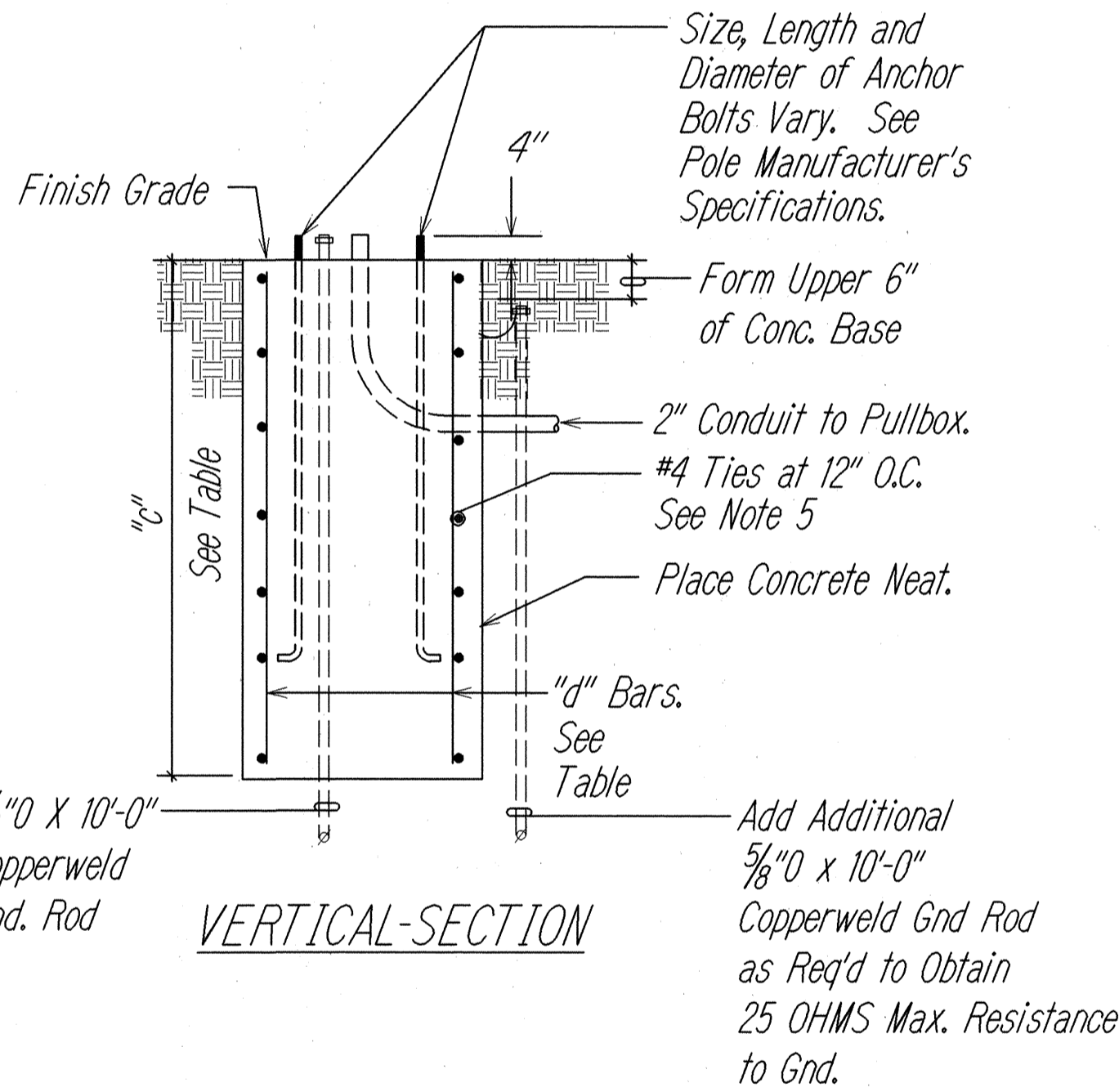
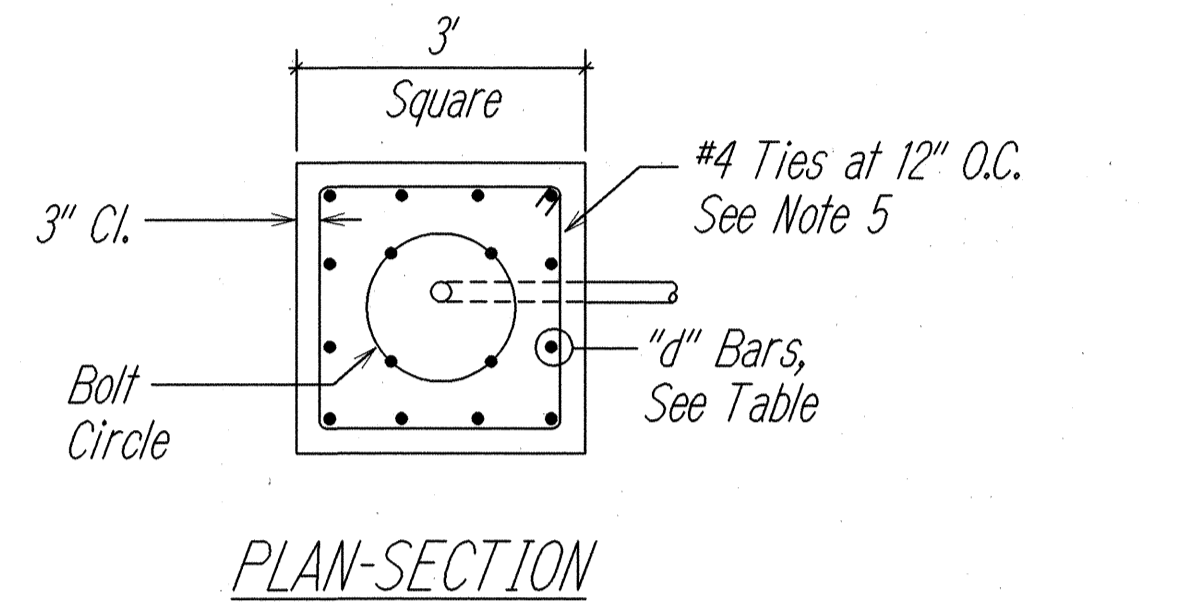


FED. ROAD DIST. NO.	STATE	FED. AID PROJ. NO.	FISCAL YEAR	SHEET NO.	TOTAL SHEETS
HAWAII	HAW.	STP-061-1 (34)	2000	36	38



TYPE "C" CONCRETE BASE		
TYPE OF STANDARD	"c"	"d" BARS
11 - 40	8'-0"	12 - #8
11 - 45	10'-0"	12 - #8

Type ———
Typical Standard Designation: II - 25
Mast Arm Length ———

NOTES:

- Concrete shall be class "B".
- Concrete base shall be used for types II and III traffic signal standards.
- Design lateral pressure: 1,500 psf.
- Conduit bend is incidental to concrete base.
- For type 11-45 standard, provide 4-#4 ties at 6" o.c. at upper 2'-3" of concrete base.

CONCRETE BASE
NOT TO SCALE

DESIGNED BY	DATE
DRAWN BY	
CHECKED BY	
IN CHARGE	
APPROVED BY	
DATE DONE	
BY	

STATE OF HAWAII
DEPARTMENT OF TRANSPORTATION
HIGHWAYS DIVISION

CONCRETE BASE DETAIL

PALI HIGHWAY
INTERSECTION IMPROVEMENTS AT JACK LANE
F.A. PROJECT NO. STP-061-1 (34)

Scale As Noted Date: Feb 29, 2000

SHEET No. 1 OF 1 SHEETS